



WOODCHURCH COMMUNITY NEWS

The village community working together

April 2026

Contact us: Telephone 01233 861381 Email enquiries@woodchurchhub.uk Web www.woodchurchhub.uk

OVER 1,000 COPIES distributed every month in the Woodchurch area

Weekly events:

Saturdays:

Boot Camp 8:30am-9:30am on the Village Green

Sundays:

Outpost Church 10:30am-11:45pm in the S&G Community Centre, Lower Road

Karate 10:00am-12:00pm in the Jean Mealham Centre

Mondays:

Pilates 9:00am-10:00am in the Memorial Hall

Tai Chi and Qigong 10:00am and 11:00am at the S&G Community Centre

Line Dancing 2:00pm - 4:00pm in the Jean Mealham Centre

Junior Tennis coaching Red-3:30pm, Orange 4:30pm, Green/Hand Ball 5:30pm, Hard Ball 6:30pm at the Tennis Club

Beavers and Squirrels 5:45pm-7:00pm in the S&G Community Centre

Group Fitness Strength Training 6:15pm and 7:15pm in the Memorial Hall

Tuesdays:

Pilates 9:00am-10:00am, 10:15am-11:15am and 6:00pm-7:00pm in the Memorial Hall

Coffee Morning 10:00am-12:00pm in All Saints Church

Midday Prayer 11:30am at All Saints Church

Puzzle Club 2:00pm-4:00pm in the Jean Mealham Lodge

Cubs 6:00pm-7:15pm in the S&G Community Centre

Karate 7:00pm-9:00pm in the Jean Mealham Studio

Scouts/Explorers 7:30pm-9:00pm in the S&G Community Centre

Wednesdays:

Pilates 9:00am-10:00am in the Memorial Hall

Museum Volunteers - maintenance and gardening 9:30am-12:00pm at the Museum

Social Pop-In 2:00pm-4:00pm Tea and coffee and boot fair marquee at the Jean Mealham Centre

Junior Tennis coaching Red/Orange-4:00pm, Green/Hard Ball-5:00pm the Tennis Club

Rainbows 5:00pm-6:00pm in the S&G Community Centre

Brownies and Guides 5:45pm-7:15pm in the S&G Community Centre

Flo's Flyer Fish & Chips in the Village Car Park

Table Tennis 7:00pm-9:00pm at The Jean Mealham Centre

Thursdays:

Art Society 10:00am-1:00pm in the Memorial Hall

Group Fitness Interval Training 6:00pm-7:00pm in the Memorial Hall

Badminton 7:00pm-11:00pm in the Memorial Hall

Karate 7:00pm-9:00pm in the Jean Mealham Centre

Fridays:

Zumba with Hannah 9:30am in the Memorial Hall

Righteous Oaks Forest Schools 10:00am-12:00pm and 1:00pm-3:00pm under 5s Stay & Play

Adult Tennis coaching 5:30pm at the Tennis Club

Previous editions of the Newsletter can be found on The HUB Web site www.woodchurchhub.uk

Other Events:

Wed 1st **Tenebrae** - 7:00pm at All Saints Church

Thu 2nd **Social Prescribers Surgery** - 1:00pm to 4:00pm in The HUB
Singing Sippers - 7:30pm in All Saints Church

Fri 3rd **Woodchurch Museum opens** for the 2026 season
Easter on the farm - All weekend at The Rare Breeds

Sat 4th **Easter Egg Hunt** - 2:00-5:00pm at All Saints Church

Sun 5th **Dawn Service** - 6:00am at All Saints Church

Mon 6th **CARM** - 10:30am in the Memorial Hall

WLHS "The Tithe Wars in Kent 1880-1936" - 7:30pm in the Memorial Hall

Wed 8th **Borough Councillor Surgery** - 11:00am to 12:00pm in The HUB

Thu 9th **Citizens Advice** - 1:00pm to 3:00pm in The HUB

Sat 11th **Spring Market** - All weekend at the Rare Breeds

Sun 12th **Holy Communion** - 11:00am at All Saints Church

Mon 13th **Memorial Hall AGM** - 7:30pm at the Memorial Hall

Tue 14th **WI "Godinton Park"** - 7:15pm in the Memorial Hall

Fri 17th **Anna Chaplaincy for older people** - 10:30am-12:30pm at the S&G Community Centre

Sat 18th **WYT** - All weekend at All Saints Church

Murder Mystery Night - 7:00pm in the Memorial Hall

Sun 19th **Morning Worship** - 11:00am at All Saints Church

Mon 20th **PPG Meeting** - 6:00pm in the Memorial Hall

Tue 21st **Quiz Night at the Six Bells** - 7:30pm in support of the Woodchurch Museum

Thu 23rd **Neighbourhood Watch Surgery** - 1:00pm to 3:00pm in The HUB

Parish Council Meeting - 7:00pm in the Memorial Hall Annex

Sat 25th **Woodchurch Garage Sale** - 10:00am-2:00pm around the village

Sip and Paint - 1:00pm-4:00pm at Wayfarer Wines

WI Quiz Night - 7:30pm in the Memorial Hall

Sun 26th **Holy Communion** - 11:00am at All Saints Church

Wed 29th **Boldshaves Gardens Opens** for the 2026 season

Thu 30th **Woodchurch S&G Community Hall AGM** - 7:30pm in the Community Centre, Lower Road

The Full Community Calendar can be found at www.woodchurchhub.uk/communitycalendar

HAVE YOU GOT NEWS FOR WOODCHURCH?

We'd love to hear from you!

The Woodchurch Community News is your village newsletter and it's only as good as what we put into it.

Have something to share?

Local events - Club updates - Community news Celebrations or milestones - Notices or appeals

Send it in and we'll do our best to include it!



WOODCHURCH PARISH COUNCIL • UPDATE •

Parish Council Website: www.woodchurch-pc.gov.uk

Parish Manager 07793 807863 clerk@woodchurch-pc.gov.uk

- **Next Housing & Development Committee meeting (including consideration of planning applications) – Weds 8th April, 7pm, Memorial Hall Annexe**
- **The next Parish Council Meeting is on April 23rd 2026 at 7pm in the Memorial Hall Annexe.**

Annual Parish Meeting

At the Annual Parish Meeting we had talks from Peter New of Neighbourhood Watch, Tim Beaman of Tenterden Counselling Service and Philippa Jones about Woodchurch Carnival and Woodchurch in Bloom. If you would like more information on their talks, contact them directly or through the Parish Manager.

Water Supply

Following the water supply issues Tonbridge area suffered earlier this year, KCC are surveying all parishes on any supply issues. If you have suffered with poor or reduced water supply, please send details to the Parish Manager so we can respond accordingly. Please note this is supply only – we are continuing to discuss flooding issues with Southern Water separately.

Noticeboard

We are aware that the magnets on the noticeboard opposite the surgery have disappeared and have now ordered a new background for pins – you should see this in place shortly.

Flagpole

The flagpole will be taken down and given a full inspection shortly, so please don't worry if you see it 'missing' one day!

Roads

We recently had a Highways Improvement Plan meeting with KCC and are continuing to try to push through a number of safety measures including at Plurenden Crossroads and around the school.

Vacancy

We still have a vacancy for one Councillor, if you are interested please contact the Parish Manager – we promise that being a Councillor is more fun than it looks from the outside!

Potholes & other road issues

If you spot any issues on the roads and pavements, from potholes and damaged signs to drainage and flooding issues, please help us to help you get it fixed by reporting direct to KCC on their online report system <https://www.kent.gov.uk/roads-and-travel/report-or-track-a-problem-on-the-road-or-pavement> - if it is an issue that requires immediate attention, you can call them on 0300 0418181

Fly-tipping

Likewise, if you spot any fly-tipping, please report it to Ashford Borough Council using their online form <https://www.ashford.gov.uk/environmental-concerns/report-a-street-issue/fly-tipping/> or by calling on 0300 0418181

Planning Applications Considered This Month

Application	Location	Parish Council	Ashford Planning
AP/90781 from PA/2025/1274	99 Lower Road	Object	Refused. Appeal dismissed.
PA/2025/2361 & PA/2025/2390	Church Elms Farm, Redbrook Street	Support	Refused
PA/2025/1628	Woodchurch School	Support	Approved
PA/2025/2326 (listed building consent)	Redbrook Cottage, Redbrook Street,	Support	Granted
PA/2025/2333 (listed building consent)	Balcony House, Brook Street	Support	Granted
PA/2025/2218	Glover Farm, Moor Lane	Support	Approved

Louise would like to thank all her friends and family who came to her surprise 100th birthday party at The Jean Mealham Centre on 7th March and made her day so memorable. Her special thanks to Debbi, Angie and Gillian for organising such an enjoyable afternoon.



YOU ARE INVITED TO THE

SCOUT & GUIDE COMMUNITY HALL

A.G.M.

ANNUAL GENERAL MEETING

AT THE SCOUT & GUIDE COMMUNITY HALL

30th APRIL

AT 7:30PM —

— ALL WELCOME! —



We're very fortunate to live in such a safe and beautiful rural area, but in the crime survey I ran last year, hundreds of you shared concerns about issues that chip away at that sense of security – including fly-tipping, speeding and dangerous driving, antisocial behaviour, shoplifting and unauthorised encampments.

One of the most common things I heard was that people rarely see police officers locally, and that reporting crime can sometimes feel pointless if nothing seems to happen afterwards. I completely understand that frustration, but we must continue to speak up when these problems occur. Reporting incidents helps ensure the police know where issues are happening and where their attention is needed.

That's why over the past month I've been bringing local people and businesses together with the police to discuss these concerns directly and make sure officers hear first-hand how people in our area are feeling.

I hosted two meetings on crime and policing through my clubs – one focused on rural crime with the police rural taskforce and people from our farming community, and another looking at shoplifting and antisocial behaviour on our high streets, with the Police and Crime Commissioner and local shop owners in attendance.

Alongside this, I've been highlighting to Kent's senior police leadership and local beat officers the areas where people have told me they want to see more visible policing and better follow-up when crimes are reported. Particularly across a large rural area like ours, it's naturally difficult for the police to be everywhere at once. But many of the problems people are worried about are already illegal – the real challenge is enforcement. That's why it's so vital that the police know where problems are happening so they can respond effectively and I'll continue to highlight to police areas in the Weald that need better support.

So please do continue to report incidents, even when it feels frustrating. And as always, if you're experiencing an ongoing issue and need help, please don't hesitate to get in touch with me at katie.lam.mp@parliament.uk.

Woodchurch Patients Participation Group (PPG)



Our next PPG meeting will be Monday 20th April, 6pm in the Memorial Hall Annexe. At each meeting we are joined by representatives from Woodchurch Surgery and a 'Speaker' from a local group/organisation. All Woodchurch Surgery Patients welcome!

If you would like to receive PPG Surgery updates and details of speakers for the meetings, please contact Philippa at philippaatwoodchurch@btinternet.com

WOODCHURCH ART SOCIETY

PROUDLY PRESENT

ANNUAL EXHIBITION 2026

Once again, we would like to extend a warm welcome to you to visit our Annual Exhibition in the Woodchurch Memorial Hall on:-

Fri 22nd May 7:00pm - 9:00pm
Sat 23rd May 10:30am - 4:30pm
Sun 24th May 10:30am - 4:30pm

Free Admission

We look forward to seeing you all again this year for
TEA - COFFEE - CAKES & SOME GREAT ART!

WOODCHURCH GREAT GARAGE SALE

Village-Wide Event

SATURDAY 25th APRIL
10:00am – 2:00pm

Organised by Woodchurch HUB

SELL • BROWSE • EXPLORE

A fantastic opportunity to:

- ✓ Clear out your unwanted items
- ✓ Set up a table (or several)
- ✓ Find bargains across the village

All welcome – sellers and buyers!

▶ Wander the streets and discover hidden treasures

FREE TO TAKE PART

- ◆ No booking fee
- ◆ No pitch fee
- ◆ All profits are yours



Table space available in the Jean Mealham Centre

- 🏠 Bargains Marquee open all day
- Free tables available
- ☕ Refreshments served

GET ON THE VILLAGE MAP

- ☑ To be included:
- ✉ enquiries@woodchurchhub.uk
- 🏠 or visit Woodchurch HUB

Surgery Opening Hours

Monday to Friday 9am to 5pm



Where to find us...

Hamstreet Dental Clinic
Warehorne Road
Hamstreet
Kent TN26 2JJ



Find us on facebook

Tel: 01233 733848

Email: hamstreetdentalclinic@gmail.com

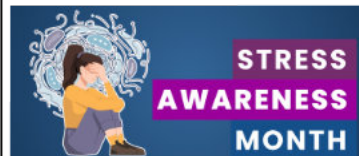
WOODCHURCH SURGERY UPDATE

We have finished our end of year well and with no rest for the wicked we enter a new year for the NHS. It seems that the government plans to end the Primary Care Networks have been shelved for a year so we don't expect massive changes. 99% of a majority turnout of GPs voted to reject the new contract for 2026. This doesn't really mean a lot, but hopefully it does show that we want to be listened to. It feels that the direction of travel is towards making GP surgeries Urgent Treatment Centres and capping referral numbers to hospitals. There is certainly no change for us this year in how we provide services despite what you might hear in the press.

Our HCA, Laura, is progressing well in her pregnancy but will go on maternity leave in April. One of our admin team, Georgia, has stepped forward and shown great initiative in training up to do many of the skills of a Health Care Assistant and is already doing some clinics taking blood. We wish Laura and her family all the best inviting a new baby into the world.

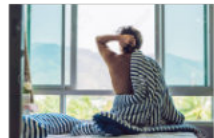
We also look forward to our new Practice Nurse Claudia Kerr this month. She has come from Accident and Emergency so is loaded with skills but will need to train up to do some of the routine primary care procedures. We obviously expect the usual Woodchurch welcome.

We have the return of one of our previous trainees, Dr Parisa Tarunnum, at the end of the month. We expect her to complete her training with us in August 2027, so she will be with us for some time. She comes back having had her second child so may occasionally be exhausted - we thank you all for helping our training doctors learn and appreciate your patience with them.



April is officially "Stress Awareness Month". I plan to take a week off over Easter to reduce my stress - waking up

with a cup of tea and a mountain view is a great way to unwind. It is easy to be mindful in the mountains when you are away from the stresses of normal life. We can all learn mindfulness and Tenterden Mindfulness Centre runs courses and our free Beginners to Runners club has also been brilliant at reducing stress and improving people's mental wellbeing. Otherwise please look at free mental health support by searching online for "Vita Health Kent".



Hopefully you will allow yourselves a bit of time at Easter to eat a bit of chocolate, which I'm sure has been proven to reduce stress. So, happy Easter, on behalf of all of us at the Surgery - Jack Hickey, GP.

WOODCHURCH HUB COMMUNITY INFORMATION CENTRE

MEALS ON WHEELS SERVICE RESUMED

Delivered locally in Woodchurch

Following requests by local residents, The HUB has once again teamed up with the Tenterden Social Hub to provide meals in Woodchurch.

Meals delivered Monday to Friday:
• Hot meal for midday
• Chilled meal for the evening

If you or someone you know could benefit, please contact us for menus and pricing.

01233 861381
enquiries@woodchurchhub.uk

WOODCHURCH HUB • COMMUNITY INFORMATION CENTRE

HUB Easter Closing

Please note that The HUB will be closed on Friday 3rd, Saturday 4th and Monday 6th April. We will re-open on Tuesday 7th April.



All Saints Church



Dear Woodchurch Friends

If you are opening this letter on the 1st April, you are joining us as we journey through Holy Week. This is a time we set apart to be wholly focused on Jesus. We set ourselves apart from the ordinary routine as we remember the death of Jesus, his resurrection and the celebration of God's light and love in the world.



On Sunday 29th March, we gathered in High Halden for Palm Sunday. We re-enacted Jesus' arrival into Jerusalem on a donkey. We were supported by donkeys Joey and Eeyore from The Retreat Animal Rescue sanctuary. If you would like to support them back, please visit: <https://www.retreatanimalrescue.org.uk>

On Monday and Tuesday, we gathered in Woodchurch and Bethersden for night prayer. These quiet, end of day services, were an opportunity to pause, breath and reflect on the day. Maybe tonight, light a candle and look back on the day. Ask yourself: when did I feel uncomfortable today? When was I happy today? What have I learnt today that will make my day tomorrow kinder?

On Wednesday 1st we gather in Woodchurch, 7pm, to prepare ourselves for the next few days. It is a time to read the bible and pray, as gradually candles are blown out. We remember Jesus suffering and dying.

On Thursday 2nd, 7pm, we gather in High Halden. Just as Jesus gathered with friends the night before he died. We invite people to have their feet washed. We pour water over one foot and gently dry the foot as a sign of our mutual service with all people. It is a great honour to serve alongside you in the Parish. This small gesture reminds us of this service.

Good Friday begins with a nature walk at 7am, starting at St Mary's, High Halden. Each person has a turn to carry a small cross and decide when to stop as we reflect and pray. We finish with hot cross buns. At midday we gather in Bethersden, where we hear the reading of the bible story of Jesus' torture and death. He came as a loving, joyful peacemaker and we mourn his death.

Holy Saturday is a quiet day. And Easter Egg hunts! In Bethersden (10:30-12:30) and Woodchurch (2-5pm). In Woodchurch there will be a quiet gazebo in the churchyard. All faiths and none are welcome to come along for refreshments and time to reflect in nature, on nature.

Easter Sunday is a day of celebration beginning in Woodchurch at 6am with a simple lighting of the first light. Followed by a celebration service in Bethersden at 11am. Jesus' everlasting light comes into the world. As creation bursts with new life we continue to celebrate and enjoy the gifts of spring alongside the gift of God's joy, peace and love to all of us and the whole of creation.

Prayers for a blessed and peaceful Easter
Maria

PARISH OF
DENSWOOD

Easter

EGG HUNT

2pm to

5pm



Easter Egg Hunt & Refreshments!

Letting go in the Gazebo

A quiet space to reflect with nature

Saturday 4th April

All Saints Woodchurch

EVERYONE IS WELCOME!

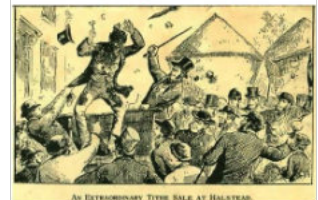


Woodchurch Local History Society April 2026

The Woodchurch Local History Society meets on the first Monday of the month at 7:30pm in the Village Memorial Hall to hear a speaker talk about a topic of local interest. On Monday April 6th (Easter Monday) our invited speaker is John Bulaitis who will talk on the subject of the 'Kentish Tithe Wars of 1880-1936'. John was a lecturer at the University of Kent when he moved to Shepherdswell (near Canterbury) to hear about a local story of the 'Battle of the Ducks' of the 1930's. This inspired him to research the often amusing stories during the Tithe Wars of Kent where local farmers were in battle with church authorities and local landowners over the imposition of tithes. One such battle occurred in 1885 at Colgate's Farm, Halstead, near Sevenoaks.



Albert Bath, Colgate's Farm, Halstead:



Please feel free to come along to this illustrated talk if the subject interests you - many local villages will be mentioned in the talk. Visitors are very welcome and pay £3 at the door. Similarly, new members are also very welcome - our subscription rate is £12 for annual membership.

Our following meeting is on Monday May 4th, 7:30pm when we are scheduled to hear Chris McCooley tell us about 'Kentish Smuggling and the Hawkhurst Gang'.

We look forward to seeing you. Geoff 01233 860393.

Help Keep Woodchurch Connected

The Woodchurch Community News continues to bring local updates, events, and important information to residents every month - and we're proud that it reaches so many people across the village.





A huge thank you goes to our regular advertisers and donations from residents who already help make this possible. However, like many things, our costs are rising. Even with more residents choosing to receive the newsletter by email, printing and delivering around 750 paper copies each month now costs approximately £400 per month.

We're keen to keep the newsletter accessible to everyone, especially those who rely on the printed edition - but we need a little extra community support to do so.

If you're a local business, please consider supporting us through advertising or sponsorship. If you're a resident, donations are also very welcome - every contribution helps keep this vital village resource going.

To find out more or get involved, please contact Wade via The HUB:

 enquiries@woodchurchhub.uk  01233 861381
[HUB Web site - Woodchurch Newsletter Advertising](#)

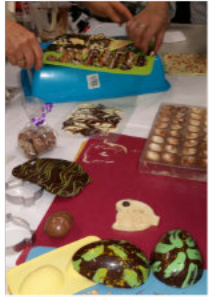
**Support local. Stay connected.
Keep Woodchurch informed.**

theWI
INSPIRING WOMEN

**WOODCHURCH
WOMEN'S INSTITUTE**

In March Woodchurch WI celebrated its 99th birthday with an excellent demonstration by Jane Napper on "Chocolate".

Focussing on Easter Eggs, Jane explained how to 'temper' chocolate, before pouring it into moulds or making chocolate bark. She showed how to fill moulds, creating shallow shells which, when set, could be filled with Biscoff caramelised biscuit spread. Coloured cocoa butter is very useful for adding further decoration to the outside shell. Jane recommended the type of solid chocolate to use, the equipment required, before letting us know useful tips she has discovered whilst being involved with chocolate. We then had the opportunity to try the delicious finished products.



Following this superb demonstration members went on to enjoy birthday cake, wine and nibbles.

The competition for the prettiest wine glass was well supported, especially as Debbie had recently led a workshop on decoupage for members of craft group. Joyce, Pat and Gillian all came joint first. Monies collected from voting were donated to East Kent Federation's charity, the Canterbury Neurology Centre.

Woodchurch WI would like to thank all who supported our coffee morning in aid of Young Carers. We raised an amazing £480.

Our next meeting on April 14th 7.15pm in the Memorial Hall will be Lee Woodcock speaking on 'Godinton Gardens', for further information visit our Facebook page or website at Woodchurchwi.weebly.com

Quiz
Saturday 25th April

At 7:30 at The Memorial Hall
Tables up to 6 people
£5 per person
Bring your own refreshments.

To book your table
Contact Josie at
josie.mackie@btinternet.com

Organised by Woodchurch WI

Woodchurch Yard Together ("WYT")

Our next social gardening weekend in the Churchyard is:

18 & 19

April

WoodchurchYardTogether@btinternet.com

 WoodchurchYard Together

Simple
Kent
Funerals

Helping you honour your loved one in a way that truly reflects their unique life.

- Affordable & imaginative goodbyes
- Eco-friendly options
- Immediate support

Call Toby: 07806 613 297

www.simplekentfunerals.co.uk

Applefield Cottage, Redbrook Street, Woodchurch, Kent. TN26 3QS

April already and Spring (of sorts) is in the air. On Thursday 23rd of April it is St George's Day, Patron Saint of England. Appropriately for Woodchurch Remembers, St George was a Roman Soldier in the reign of Diocletian. This emperor had proscribed the Christian Church, demanded Christians sacrifice to the pagan gods and he persecuted dissenters. As an army officer St George was expected to comply but he refused, resulting in his execution on 23rd April.



On Thursday 23rd April this year Woodchurch Remembers will decorate the Six Bells with the Flag of St George at midday. We are aware that many people will be at work so intend to meet in the Six Bells from 5 PM for a drink to celebrate the Feast of St George. I'm quite keen on feasting so this may become a feature in the future!

We will also raise a glass to The Royal Navy and Marines who on 23rd April 1918 raided the Belgian port of Zeebrugge to disable the German U-Boat base there. Eight Victoria Crosses were won that day and the U-Boat operations severely hindered. This operation set a precedent for similar raids in WW2.

So join us in the Six Bells to celebrate this day of a saint and heroes.

WOODCHURCH VILLAGE LIFE MUSEUM 150 Club Draw



Thank you to all the subscribers to the WVLM lottery draw. The winners in the March draw.

March 2026 Draw Results

1st Prize	£50	Belinda Hinson	1127
2nd Prize	£30	Claire Town	982
3rd Prize	£20	Audrey Harmer	1198

There is still time for you to register. If you would like to enter the 2026 150+ club lottery draw the cost is £15 for 9 months. All money raised through the draw helps to keep our museum open. For more information contact us on 01233 860586 or at enquiries@woodchurchheritagetrust.uk

2026 sees the 25th anniversary of the opening of the museum which was started by Geoff Loynes. In February this year there was an exhibition in the Memorial Hall showcasing some of the things that the museum holds. There are many permanent exhibitions but every year there are one or two temporary ones. What will this year's exhibitions be? **Come and find out, from this coming Friday, April 3rd and any weekend or bank holiday until the end of October, 10 a.m. until 4 p.m.**

We also have some exciting events presented by the **Finds Liaison Officer for Kent, Andrew Richardson**; the first on the evening of May 13th is a talk about the Lossenham Project, a community-led landscape research initiative that began in 2020. Focused on Lossenham and its surrounding hinterland—spanning 15 parishes across the Kent/Sussex border along the River Rother—the project aims to uncover the environmental and human history of this dynamic landscape over the past ten thousand years; the second event takes place on Saturday 20th June at the museum, a Finds Day when Andrew will invite metal detectorists, to bring their treasures to be analysed.

The museum is run entirely by dedicated, enthusiastic volunteers. Entrance is free but the museum relies on donations in order to keep functioning.

When was the last time you paid a visit to the museum? We hope to see you soon.

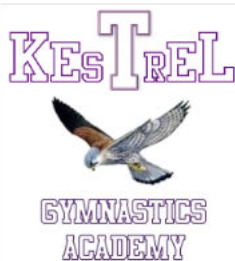
Saturday 18th April – Wayfarer Wines Harvest pre-release welcome Event
(Woodchurch residents free tickets)

Wayfarer
WINES

Join us to celebrate the release of our new wines at our Pre-release Welcome event — Spaces are limited, so please book early. On the day, we'll be sharing a wide range of local cheeses, local produce, and some exciting new wines from our 2025 harvest that we absolutely love and can't wait to introduce you to.

Please contact Karen [07943532197](tel:07943532197) and provide your post code to secure your free ticket.

Well done to all our Women's Artistic gymnasts who competed at NDP grades in Guildford this weekend! All our gymnasts achieved their pass mark with some excelling and achieving 'working above' level scores. We are very proud of their performances and all their hard work over the past months in preparation.



In addition to our regular class timetable, we will be running Open gym and specialist workshops throughout April Half-term!



****Tuesday 7th & 14th April****

- Open Gym session (12 years and under) ~ 10:30-12:00 for members and non members.
- Bars workshop (intermediate) ~ 13:00-15:00

****Thursday 9th & 16th April****

- Open Gym session (12 years and under) ~ 10:30-12:00 for members and non members.
- Tumbling/Acro workshop (intermediate) ~ 13:00-15:00

Open gym will be a drop in session (no booking needed) - £7 entry per person

To sign up for Bars and/or Tumbling workshop please email. Limited spaces are available - £10 per person/class

Kestrelgymnastics2009@gmail.com

Woodchurch Players

Please note that unfortunately, due to circumstances outside of our control, the spring play has had to be cancelled.



Woodchurch Memorial Hall

is hosting

A MURDER MYSTERY NIGHT SET IN WW2

on

Saturday 18th April

Doors Open 7pm for 7.30pm start

'Death By Radio'

Tickets £10

Available via www.ticketsource.co.uk or via

Woodchurch HUB

Bring your own food & drink

Book as a team of 6 or as individuals



Raffle— cash or card

www.woodchurchhalls.uk

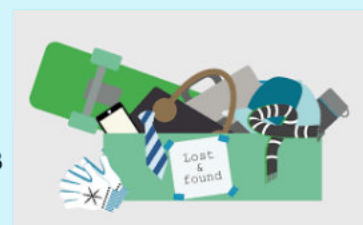
Memorial Hall AGM

Woodchurch Memorial Hall Management Committee Annual General Meeting is on Monday 13th April at 7.30 pm Everyone is Welcome

Please come along to find out more about what we have been doing over the last year and our plans for this community facility for the next year. As you may know, the hall is run by a small team of volunteers who look after it for the benefit of everybody in the village. We would welcome new committee members, volunteers, or general offers of help. You need to have enthusiasm and a bit of free time – we're not looking for a huge commitment. Most people give two or three hours each month; some a bit less and others quite a lot more. We spend our time maintaining the building, looking after the finances, managing bookings, handling publicity and generally keeping things in order. Any help you can give would be really welcomed. Hope you can join us.

Village Lost Property at The HUB

If you find any lost property around the village please bring it to The HUB. If you have lost something around the Village please let The HUB know as it may have been handed in.



ELVIS
TRIBUTE NIGHT
with
CLIFF CASTLE

Saturday 23rd May 2026
 At The Jean Mealham Centre
 From 7:00pm

A Night of Elvis Hits!
Tickets: £15
 Available from Woodchurch HUB

Bring Your Own Nibbles and Drinks!

Proceeds in support of:

- ★ Woodchurch Remembers
- ★ Anna Chaplaincy
- ★ Woodchurch Shed
- ★ Woodchurch Carnival



It's been a particularly busy period lately, and I wanted to take a moment to share what's been happening behind the scenes. With the ongoing situation in the Middle East, many clients have needed extra support—whether that's rearranging plans, finding safe alternatives, or simply getting some reassurance during an uncertain time. I've been working hard to make sure everyone feels looked after, and although it's been demanding, it's also reminded me how important it is to have someone in your corner when travel plans suddenly shift.

One thing this season has really highlighted is the value of planning ahead. Bookings can be made more than a year in advance, and doing so can make a huge difference. Early planning means better availability, more choice, and often the best prices before demand starts to rise. Whether you're thinking about a family holiday, a special celebration, or just a well earned break, securing your plans early gives you the strongest advantage.

If you're already dreaming about your next getaway—even if it feels far off—now is a great time to start exploring options. I'm here to help you find the right fit, answer questions, and make the whole process as smooth as possible.

Here's to planning ahead and making your future travels something to look forward to. Eleanor
 WhatsApp 07772 710 996
 Email: eleanor@travologytravel.co.uk

WOODCHURCH RAINBOWS

JOIN THE FUN! We currently have vacancies due to some of the older Rainbows moving up to Brownies girls can join us from their 4th birthdays and the summer term is the best time to join, as we like to get outside for our activities especially the cooking and games - fun & friendship

We meet on Wednesdays from 5pm till 6pm at the Scout and Guide Community Centre

Please contact Tracy 07511422735

WOODCHURCH BROWNIES

We now have 14 girls and some will be moving up to Guides in September. If you are 7 and would like to know more about Brownies why not come and join us one evening and if you will be 10 by September, come and make new friends and get ready for the re-launch of our Guide unit!

We are all looking forward to our return after the Easter holidays for some camp cooking and spending more time outdoors!

We meet on Wednesday evenings from 6.45pm till 8pm at the scout and Guide Community Centre

Please contact Tracy 07511422735

WOODCHURCH BROWNIES

Woodchurch Village Shed

We are now flourishing on Wednesday and Thursday mornings 10am until 1pm.



We have our first lady member too. When we have a few more ladies we will switch to a separate day.

We have just finished and delivered 4 x garden planters to the School and we have other projects in hand along with gearing up to produce items for the village Carnival in June.

We are currently in discussions with the Scouts and Guides Community Centre and the Parish Council to help fund another Defibrillator to go in the Community Centre. It is work in progress.

If anyone is interested in joining feel free to come along and see for yourself or contact me at woodchurchvillageshed@gmail.com.

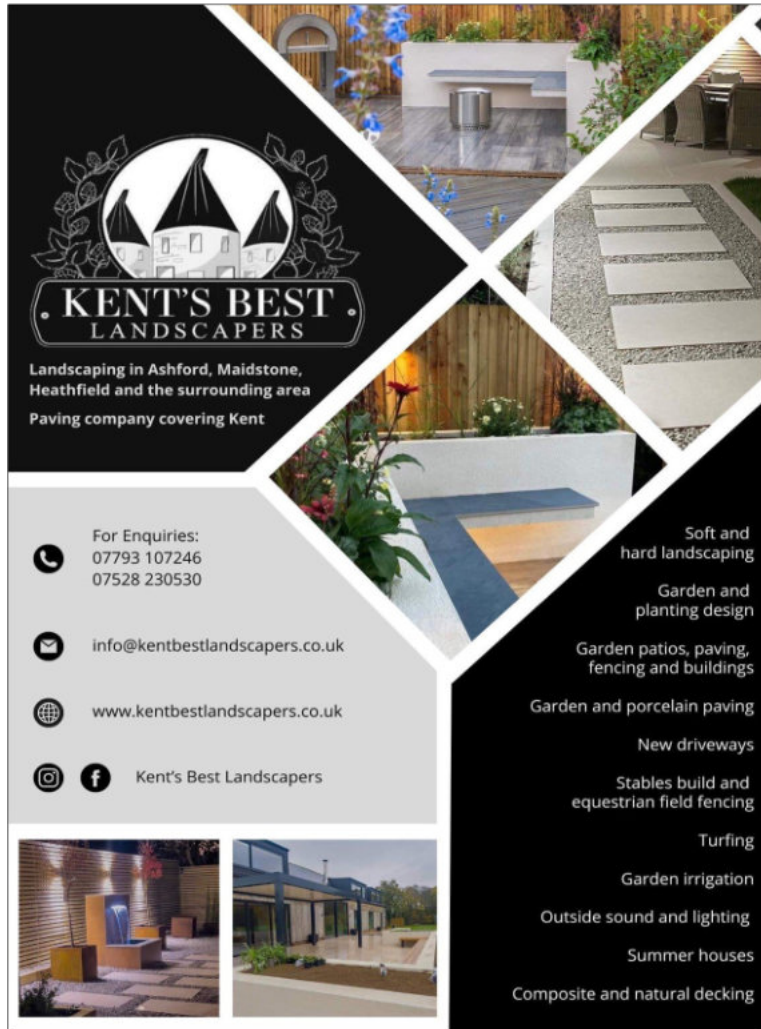
Best wishes, Neil

woodchurchvillageshed@gmail.com
 07717 861319



WOODCHURCH
 SHOP 🍷 BAR 🍷 WINE TASTING 🍷 TOURS
 Thursdays to Sundays 11am - 5pm
<http://woodchurchwine.co.uk> tel:01233 860276

KENT HOLIDAY COTTAGES
 ☎ +44 (0) 1233 860 293
 ✉ info@kentholidaycottages.co.uk



KENT'S BEST LANDSCAPERS
 Landscaping in Ashford, Maidstone, Heathfield and the surrounding area
 Paving company covering Kent

For Enquiries:
 07793 107246
 07528 230530

info@kentbestlandscapers.co.uk
www.kentbestlandscapers.co.uk
 Kent's Best Landscapers

Soft and hard landscaping
 Garden and planting design
 Garden patios, paving, fencing and buildings
 Garden and porcelain paving
 New driveways
 Stables build and equestrian field fencing
 Turfing
 Garden irrigation
 Outside sound and lighting
 Summer houses
 Composite and natural decking

DK Plastering Services



All plastering work carried out
 Fully Insured
 Professional Workmanship

For a clean & tidy job call David
07974 891795

DOG GROOMING SALON IN WOODCHURCH!



A fully equipped dog grooming salon has opened in the heart of Woodchurch!

If you have a pooch with a pong, fur tumbleweed rolling down the hall, or your dog's fur grows faster than a Labrador at an all you can eat buffet, call us!

We also offer nail trims and Emmi Pet Ultrasonic teeth cleaning.

I am a level 3 qualified dog groomer, the salon is heated/air conditioned & insured.

Whatever your dog grooming needs, please get in touch if we can help.

 EMAIL:SCOOTSSALON@GMAIL.COM
 PHONE: 07435 224133
 WEBSITE: WWW.SCOOTSSALON.CO.UK
 SOCIALS: @SCOOTSSALON

Eleanor Johnson
 Your Woodchurch Travel Agent



Summer/Winter Sun Holidays 🌴 City Breaks 🏙️ Ski 🎿
 Longhaul Holidays 🌊 Cruise 🚢 Safari 🦁 UK Breaks 🇬🇧



NO FEE SERVICE!

☎ 07772 710 996
 ✉ eleanor@travologytravel.co.uk
 🌐 www.travologytravel.co.uk/eleanor

100% Financially protected
 ATOL, IATA protected

WOODCHURCH COTTAGE FLOWERS



AN ARTISAN FLORIST & FLOWER GROWER, WE OFFER BOUQUETS, FAREWELL ARRANGEMENTS AND WEDDING FLOWERS.

ALL GROWN ON OUR SMALL HOLDING IN WOODCHURCH. WE WORK WITH NATURE AND THE SEASONS, NO CHEMICAL OR PESTICIDES USED

call or text 07960 449235

www.woodchurchcottageflowers.co.uk



Thank You

TO OUR SPONSORS

muscle whisperer

Remedial massage therapy.

Your Local Woodchurch Massage Therapist

- Remedial Massage
- Sports Massage
- Holistic Massage

- Ultrasound Therapy
- Electrotherapy

- Injury Treatments & Rehabilitation
- Rehabilitation Taping/Strapping
- Athletic Taping/Strapping



Bookings - 07799221043

www.musclewhisperer.org.uk

Treatment Room - Little Vale TN26 3QW

musclewhisperer@outlook.com



fab feet

Professional Foot Healthcare

www.fabfeethealthcare.co.uk

Delivering high quality Podiatric care in the comfort of your own home

Providing a reliable and friendly service of professional treatments for all of your foot ailments:

Call Michelle on:

Tel: 01233 731207

Registered & Insured



Everything Outside

Bringing New Life
To Your Garden

For A Quick Quote From A Company You Can Trust Call

☎ 01580 766 232 📱 07795 465 861

Welcome To Everything Outside

We cover a wide range of services to meet the requirements of our ever-growing client list, if you are looking for a company you can trust to provide a high standard of quality work covering

- ✓ Gardening
- ✓ Landscaping
- ✓ Garden Design
- ✓ Hedge Cutting
- ✓ Fencing
- ✓ Tree Surgery
- ✓ Clearance
- ✓ Digger Work

and much more. Then call our experienced team today on 07795 465 861. To view our full range of services, click on the link below.

Our head office is based in Tenterden, Kent and means we are in the perfect location to proudly service Kent and East Sussex. All our services are tailored to each job we carry out and our team are experience in all aspects of fencing and landscaping services making us your number one choice for all work you require.

Great Work

Great Reputation

Great Price

Karen Hayward

Massage and Reflexology

Massage and Reflexology
from my treatment room in Woodchurch

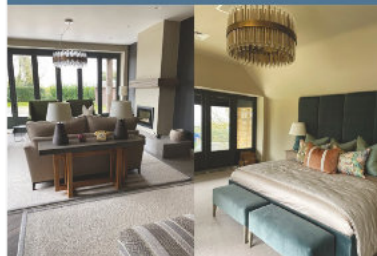
To book or to discuss your treatment needs call me on:

☎ 07808675251

VERNACULAR HOMES

— design & build —

Established 2010



We work closely with homeowners and developers on:

- New builds
- Restorations
- Barn conversions
- Extensions
- Renovations

From concept to completion, we manage the entire process to realise your vision.

Thoughtfully designed and beautifully crafted homes

vernacularhomes.com | 01233.641177



WOODCHURCH CARNIVAL

It's April, so Carnival 2026 is fast approaching!
And we need YOUR help.

Firstly, we are looking for people who are celebrating something special in 2026 to get in touch with us. We want to involve as many people as possible in our community's special day by celebrating some amazing achievements.

As you know, the theme for this year's Carnival is "All you need is love". So, whether you're toasting an important wedding anniversary or birthday, marking a community or local business milestone, acknowledging success in a hobby or sport - let us know what's big for you, your family and friends in 2026!

Secondly, it's now time to start gathering our army of volunteers to help us in the run up to Carnival day and/or on the day itself.

Volunteers could help to set up the green, run the bar, hand out programmes etc. You don't have to do a lot, but every single minute will really help make the day a big success.

Finally, as we go into the last couple of months before Carnival, it's nearing your last chance to register your float for the parade or performance in the arena.

To tell us about 2026 celebrations, volunteer or book a float/performance slot, please go to our website or socials, visit the HUB, or email enquiries@woodchurchcarnival.uk.

www.woodchurchcarnival.uk



Woodchurch Litter Pick – A Great Effort... But a Bigger Issue

Last Saturday (28th March), on a bright but chilly morning, a dozen or so volunteers gathered in Woodchurch, armed with high-vis jackets, litter pickers, gloves and bags. They headed out along the roads and lanes leading into the village with one simple aim: to keep our community clean and cared for.



A huge thank you goes to everyone who took part on Saturday. Special thanks to the mother and daughter who collected rubbish earlier in the morning before heading to another commitment, and to the small family groups who were also spotted quietly doing their bit. And of course, to all those residents who regularly pick litter and help keep Woodchurch looking its best - your efforts do not go unnoticed.

The rubbish collected wasn't from within the heart of the village, but largely from waste thrown from passing cars along the approach roads. In contrast, George's Hill - a no-through road - was almost entirely litter free. The difference was striking, and it highlights a growing issue that affects many rural communities like ours.

What You Can Do?

Report it – If you witness litter being thrown from a vehicle, note the registration, make and colour, and report it to the local council or via National Highways.

Use your dashcam – Footage can support enforcement and fines.

Lead by example – Take your litter home and encourage others to do the same.

Support local efforts – Even small actions, like picking up a few items on a walk, make a real difference.

Woodchurch is a village people care deeply about - and it shows. Addressing these requires a mix of awareness, responsibility, and action. National campaigns such as "Don't be a Tosser" remind us in no uncertain terms that this behaviour isn't just careless—it's unacceptable.

Together, by continuing to take pride in where we live and by challenging careless behaviour, we can keep our lanes, hedgerows and verges clean for everyone to enjoy.

