



# WOODCHURCH COMMUNITY NEWS

*The village community working together*

July 2025

Contact us: Telephone 01233 861381 Email enquiries@woodchurchhub.uk Web www.woodchurchhub.uk

**OVER 1,000 COPIES distributed every month in the Woodchurch area**

## WOODCHURCH Community Calendar



### Weekly events:

#### Saturdays:

- Boot Camp** 9:00am-10:00am on the Village Green  
**Museum Open** 10:00am to 4:00pm

#### Sundays:

- Museum Open** 10:00am to 4:00pm  
**Outpost Church** 10:30am-11:45pm in the S&G Community Centre, Lower Road  
**Karate** 10:00am-12:00pm in the Jean Mealham Centre

#### Mondays:

- Pilates** 9:00am-10:00am in the Memorial Hall  
**Tai Chi and Qigong** 10:00am and 11:00am at the S&G Community Centre  
**Knit and Natter** 2:00pm - 3:30pm in the Jean Mealham Lodge  
**Line Dancing** 2:00pm - 4:00pm in the Jean Mealham Centre  
**Junior Tennis coaching** Red-3:30pm, Orange 4:30pm, Green/Hand Ball 5:30pm, Hard Ball 6:30pm at the Tennis Club  
**Beavers** 6:00pm-7:00pm in the S&G Community Centre  
**Group Fitness Strength Training** 6:15pm and 7:15pm in the Memorial Hall

#### Tuesdays:

- Pilates** 9:00am-10:00am, 10:15am-11:15am and 6:00pm-7:00pm in the Memorial Hall  
**Coffee Morning** 10:00am-12:00pm in All Saints Church  
**Little Leaves Forest Schools** 10:00am-12:00pm under 5s Play Grp  
**Puzzle Club** 2:00pm-4:00pm in the Jean Mealham Lodge  
**Cubs** 5:30pm-7:00pm in the S&G Community Centre  
**Karate** 7:00pm-9:00pm in the Jean Mealham Studio  
**Salsa Dance** 7:30pm-8:30pm in the Jean Mealham Centre  
**Scouts** 7:30pm-9:00pm in the S&G Community Centre

#### Wednesdays:

- Pilates** 9:00am-10:00am in the Memorial Hall  
**Yoga** 10:00am-11:00am in the Memorial Hall  
**Museum Volunteers** - maintenance and gardening 9:30am-12:00pm at the Museum  
**Social Pop-In** 2:00pm-4:00pm Tea and coffee and boot fair marquee at the Jean Mealham Centre  
**Junior Tennis coaching** Red/Orange-4:00pm, Green/Hard Ball-5:00pm the Tennis Club  
**Rainbows** 5:00pm-6:00pm in the S&G Community Centre  
**Fish and Chips** 4:30pm-7:30pm in the Village Car Park  
**Brownies and Guides** 5:45pm-7:15pm in the S&G Community Centre

#### Thursdays:

- Art Society** 10:00am-1:00pm in the Memorial Hall  
**Group Fitness Interval Training** 6:00pm-7:00pm in the Memorial Hall  
**Badminton** 7:00pm-11:00pm in the Memorial Hall  
**Karate** 7:00pm-9:00pm in the Jean Mealham Centre

Previous editions of the Newsletter can be found on The HUB Web site [www.woodchurchhub.UK](http://www.woodchurchhub.UK)

#### Fridays:

- Zumba with Hannah** 9:30am in the Memorial Hall  
**Little Leaves Forest Schools** 10:00am-12:00pm under 5s Play Grp  
**Squirrels** 5:30pm-6:30pm in the S&G Community Centre  
**Adult Tennis coaching** 5:30pm at the Tennis Club

#### Other Events:

- Tue 1<sup>st</sup> **Evening Prayer** - 4:00pm at All Saints Church  
**Cottage Flowers evening tour** - 6:30pm at Woodchurch Cottage Flowers  
Wed 2<sup>nd</sup> **Rest and Restore** - 11:00am in the Memorial Hall  
Thu 3<sup>rd</sup> **Social Prescribers** - 1:00pm to 4:00pm in The HUB  
**Singing Sippers Choir** - 7:00pm at All Saints Church  
Sat 5<sup>th</sup> **Woodchurch Yard Together** - All weekend at All Saints Church  
Sun 6<sup>th</sup> **Morning Worship** - 11:00am at All Saints Church  
Mon 7<sup>th</sup> **CARM** - 10:30 in the Memorial Hall  
Tue 8<sup>th</sup> **Evening Prayer** - 4:00pm at All Saints Church  
**WI "Bob Newhart Rides Again"** - 7:15pm in the Memorial Hall  
Wed 9<sup>th</sup> **Borough Councillor Surgery** - 11:00am to 12:00pm in The HUB  
Thu 10<sup>th</sup> **Citizens Advice** - 1:00pm to 3:00pm in The HUB  
Sun 13<sup>th</sup> **Holy Communion** - 11:00am at All Saints Church  
**Evensong** - 6:00pm at All Saints Church  
Tue 15<sup>th</sup> **Evening Prayer** - 4:00pm at All Saints Church  
Sat 19<sup>th</sup> **WIB Flower and Produce Show** - in the Memorial Hall and on the Village Green  
Sun 20<sup>th</sup> **Sunday Saints** - 3:00pm at All Saints Church  
Tue 22<sup>nd</sup> **Evening Prayer** - 4:00pm at All Saints Church  
Thu 24<sup>th</sup> **Neighbourhood Watch Surgery** - 1:00pm to 3:00pm in The HUB  
**Parish Council Meeting** - 7:00pm in the Memorial Hall Annexe  
Sun 27<sup>th</sup> **BCP Holy Communion** - 8:00am at All Saints Church  
Mon 28<sup>th</sup> **PC Laker Surgery** - 10:00am to 11:00am in The HUB  
**Hug in a Mug** - 10:45 in the Old Post Office Coffee Shop  
Tue 29<sup>th</sup> **Evening Prayer** - 4:00pm at All Saints Church

The Full Community Calendar can be found at [www.woodchurchhub.uk/community-calendar](http://www.woodchurchhub.uk/community-calendar)

Previous editions of the Newsletter can be found on The HUB Web site



## WOODCHURCH SURGERY UPDATE

The big news nationally last week was that the "FAT JABS" are going to be rolled out across primary care for everyone.

**Unfortunately, this is fake news...** There is agreement in principle that over the next couple of years GPs will be initiating and monitoring Mounjaro for weight loss. This lucky cohort of people will be a select few and will need to have qualifying criteria starting with a body mass index of over 40. You can measure your body mass index quite easily using online calculators but it is a measurement between height and weight.



Those with a body mass over 40 will then need to have at least four of these full qualifying conditions: type 2 diabetes; high blood pressure; heart disease; obstructive sleep apnoea; abnormal blood fats. It is estimated in the Kent and Medway population of around 3 million that about 800 people will be eligible for this. Please do not approach us for prescriptions of weight loss injections as any of people who qualify under the current diabetic guidelines will be offered them as part of their diabetic treatment when it is indicated.



More news about these weight loss medications is that it does reduce the absorption of certain medications. In particular we do have concerns that it might reduce the absorption of oral progesterone

which is present in contraceptive medications and also as part of hormone replacement therapy. We are trying to document in people's records when we get notification from private clinics that people are on weight loss medications so that we can check for any drug interactions however we do not get notified by all so please be mindful of drug interactions if you are taking them.

The big news from the surgery was that last Tuesday Dr Claire Smith worked her last official day with us as a GP. We hope we gave her a good send off and we have certainly enjoyed working with her and are very grateful for all her hard work over the years. On 30<sup>th</sup> June Dr Bainingul Ahmed started working with the team and will be doing a regular Monday and Wednesday, and from August Dr Stanley Tso will be doing Wednesday to Fridays. Dr Stanley so was a GP partner at Faversham and trained locally so knows the area well and I am sure will be an excellent addition to the team and we look forward to the usual Woodchurch welcome.

Lots of us will be travelling for holidays over the summer season as the schools break up. Please try to remember to do what you can to minimise the risk of catching bugs - Covid is still doing the rounds as are some other unseasonal coughs and colds so don't ruin your holiday and take sensible precautions. Also take plenty of factor 50 sun cream and remember to use it!



Have a great summer on behalf of the Surgery - Dr Jack Hickey, GP

### Surgery Opening Hours

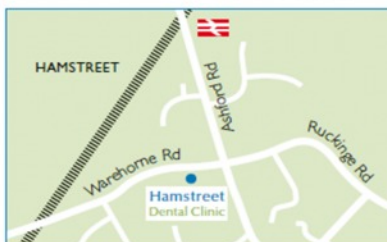
Monday to Friday 9am to 5pm



### Where to find us...

Hamstreet Dental Clinic  
Warehorne Road  
Hamstreet  
Kent TN26 2JJ

Find us on facebook



Tel: 01233 733848

Email: [hamstreetdentalclinic@gmail.com](mailto:hamstreetdentalclinic@gmail.com)

### Margaret Morris Movement

Gentle exercise for the over 50's

Please be aware that there will be no classes during July or August

We have been accepted into the leagues for the coming season which means we now have our first ever Kent League team playing in the county league



Training starts 2nd July on the green, with open tryouts for anyone over 16

Friendlies start in August. With the Kent league starting mid August and the Saturday and Sunday Ashford league starting the first weekend of September

The walking football over 50s and over 60s are also looking for players so if anyone is interested please email [Woodchurchfc@gmail.com](mailto:Woodchurchfc@gmail.com)



**Parish Council Website:** [www.woodchurch-pc.gov.uk](http://www.woodchurch-pc.gov.uk)  
**The next Parish Council Meeting is on Thursday 24<sup>th</sup> July**  
**at 7pm in the Memorial Hall Annexe**

### Bus Stops



The Parish Council has continued to work hard to resolve the location of the new bus stops along Front Road. We have always insisted that they should remain in the locations they have historically been. After numerous heated email exchanges and telephone conversations with both KCC and Ashford Borough Council, to ascertain why KCC had decided to move them, the Parish Council is pleased to advise that KCC has finally agreed that the stops should remain in the historical locations. However, KCC now appears to still be advising the contractor of an incorrect position for the Northbound stop, after a surveyor was spotted measuring a stretch of road outside the wrong premises. The Parish Manager, is in communication with KCC to get the location amended. In addition, the issue relating to the removal of the bus shelter at Brattle which was Parish Council property, without the Parish Council's permission, has yet to be resolved.

### Woodchurch Windmill

Ashford Borough Council contacted the Parish Council enquiring our intentions for the windmill now that it is on the Asset of Community Value list. However, progress is stymied until Ashford Borough Council has made a decision on the sale of the asset. In the meantime the Parish Council continues to pressure ABC, reminding them of their legal duty to repair and maintain the Grade 2\* structure



### Sports Pavilion

Unfortunately the condition of the sports pavilion has started to decline, and the facilities fall short of equality standards. At the same time the Memorial Hall structure is approaching 70 years of age, and although safe for now, is showing clear signs of progressive "cancer concrete".

At the last meeting the Parish Council agreed that in conjunction with the Village Green Charity and the Memorial Hall Charity, to carry out a community consultation to gauge residents views in upgrading the buildings, in particular the sports pavilion.

### Bird & Bat Boxes

Woodchurch Village Shed has commenced constructing wooden bird boxes, and has sourced the appropriate materials for bat boxes, with the support of the Parish Council. These will soon be available to residents.

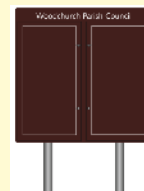
They are built to a very high standard and comply with RSPB guidelines. If you have any interest



07793 807863 or email [clerk@woodchurch-pc.gov.uk](mailto:clerk@woodchurch-pc.gov.uk).  
Alternatively email [woodchurchvillageshed@gmail.com](mailto:woodchurchvillageshed@gmail.com)

### Noticeboard

In the coming weeks, a new noticeboard will replace the existing one opposite the surgery. This will continue to be for the use of the local community. The same rules will apply to notices displayed, these can be found under Noticeboard Policy on the Parish Council website



### Planning Applications Considered Over The Last Two Months

Application	Location	Parish Council	Ashford Planning
PA/2025/0438	Playing Field, Rectory Close	Support	Waiting Decision
PA/2024/2281	Clappers Mead, Bethersden Road	Support	Grant Consent
OTH/2025/0184	Land between, 82-120 Front Road	Unable to comment until traffic measures resolved	Waiting Decision
PA/2025/0682	12, Kirkwood Avenue	Support	Waiting Decision
PA/2025/0536	Maidenwood Farm, Haycross Lane	Object on the grounds it doesn't appear to comply with HOU5	Waiting Decision
PA/2025/0478	Berridge Farm, Brook Street	Support	Approve With Conditions
PA/2025/0688	Cob Tree Meadow, Brook Street	Support Subject to Water Availability	Waiting Decision
OTH/2025/0908	37 The Green	Submitting comments to ABC outlining concerns	Waiting Decision
NOT/2025/0938	Land South of Maywood Farmhouse, Frog Hole Lane	Support, subject to clarification of associated operational development	Waiting Decision
NOT/2025/0943	Balcony Farm, Cuckoo Pit Lane	Support, subject to access and clarification of associated operational development	Waiting Decision

### How to contact your Parish Council

**In person:** By talking to one of your councillors - details on the Parish Council Web site

**By email:** [clerk@woodchurch-pc.gov.uk](mailto:clerk@woodchurch-pc.gov.uk)

**By phone:** 01233 861381 or 07793 807863

**Through The HUB:** Place your correspondence in a sealed envelope marked "Parish Council" and deliver to The HUB

**By post to:** Woodchurch Parish Manager, c/o The HUB, Front Road, Woodchurch, Kent, TN26 2PA

**Through the contact form on the Parish Council Web site:** [www.woodchurch-pc.gov.uk/contact-us/](http://www.woodchurch-pc.gov.uk/contact-us/)



# All Saints Church



Dear Friends,

During this warm weather I thought this might be a good time to write about our wonderful churchyard. Everything around us is growing so quickly this time of the year, and I am immensely grateful to those in our village who give up their time and work so hard to keep our churchyard looking so beautiful - especially at this time of the year.



We do our best to balance the needs of all of our churchyard users - those who visit loved ones who are buried in this holy space; those who like to sit and enjoy the peaceful and beautiful surroundings and those who like to walk - with and without dogs - our churchyard includes public footpaths.

We have the WoodchurchYard Together Group (WYT) who have volunteer weekends once a month to maintain the churchyard, and we have a churchyard plan in the porch which explains where the wild flower/wildlife areas are. The group recognise the importance of gardening to support mental well being, and enjoy social time during their weekends together. We are grateful that Peter Buckley (an ecologist) has produced a wildlife report for us which we are now looking at using to produce information for those who visit the churchyard. Our churchyard contact for Woodchurch is Philippa Jones [philippaatwoodchurch@btinternet.com](mailto:philippaatwoodchurch@btinternet.com) - we are always grateful for new volunteers. The last weekend was less well attended, and it would be great to find new people who can help.

As Rector, I spend quite a lot of time dealing with churchyard queries. I love to get emails from people who are looking to trace ancestors - we have recently had contact from families in the USA and Australia who have made visits. There are also quite a lot of church rules I have to try to ensure we adhere to, so I have included details in this month's magazine. I am always happy to chat about our churchyard.

Enjoy your Summer and outdoor village spaces - especially churchyards!  
God Bless  
Sue

## Woodchurch Art Society

**Would like to say a big thank you to everyone who supported our Annual Art Exhibition over the late May Bank Holiday weekend.**

Once again the weather was on our side and we welcomed over 350 visitors. Many of you are regulars but there were also lots of new faces.

We are proud to tell you we sold 64 paintings of our 198 displayed and Woodchurch Deconstructed by Alison Clothier was voted My Favourite Picture.

Once again thank you all for your continued support and we look forward to seeing you in 2026



## Caring for our Churchyard Caring for one Another

In our churchyard we try to balance the needs of

- those who visit to tend the graves and memorials of loved ones.
- those who visit to find an oasis of peace and quiet to pray and reflect.
- walkers and those who come to enjoy the flowers and wildlife.

We are very grateful to those who help us to maintain our churchyard, and we have a plan which helps us to balance all of these needs.

We also have to meet rules (legal requirements) which are set by the church in order to protect the space for future generations - these are summarised overleaf. The Rector and Church Warden need to ensure that we comply with church rules, but we also appreciate how important graves and memorial spaces are for families. If you would like to talk about this please contact the Rector Reverend Sue Rose [revsuerose@outlook.com](mailto:revsuerose@outlook.com) 01233 820266



## Summary of Churchyard Rules

Please feel free to bring fresh flowers when you visit to tend graves and ashes plots - water is available in the churchyard

- Burials and memorials should be 4m away from the church; Memorials and headstones have restrictions on the type of stone, the size and the type of lettering - the Rector also has to approve the wording and any emblems etc
- The scattering of ashes is not permitted - they can be buried in our memorial garden, or in an existing burial plot - please contact the Rector.
- Bushes and shrubs should not be planted on graves; kerbs, railings and chippings are not allowed (bark chippings are OK); artificial turf, black sheeting and compost sacks are not allowed.
- No object can be brought into the churchyard without permission e.g. windmills, solar lights, ornaments - if you are unsure please ask.
- Flower containers need to be at ground level (i.e. buried into the ground or memorial).
- Artificial flowers are allowed for temporary periods e.g. Christmas; items blowing off graves may be disposed of if damaged or unclaimed.



# All Saints Church

## Money Matters

### June 2025

**KEEP  
OUR  
CHURCH  
OPEN**

#### Why do we need your help?

We are a small (around 15 people) worshipping community who are struggling to ensure this Grade 1 listed building is maintained and safe for all who use it. We would like to pass it on to future generations. We get no outside help with funds - except for grants we apply for to help with specific projects and repairs.

#### What did we spend on the building in 2024?

Insurance and heating	£4,500
Building Maintenance	£1,500
Roof Repairs	£1,600
Repairs to East Wall	£11,200
<b>Total</b>	<b>£18,800</b>

#### What are we spending/planning for this year?

Insurance and heating	£4,500
Building Maintenance	£1,500
North wall Repairs	£3,540
Front boundary wall repairs	£2,500
School boundary wall repair	£10,000
West wall estimated cost	£3,000
<b>Total</b>	<b>£25,040</b>

We are also planning a new disabled ramp and glass door (partly funded by a legacy).

#### Financial Help

We are grateful to have received £18,240 from the National Lottery Fund last year to cover the repairs to the East Wall and the boundary wall with the school. This year, Friends of Kent Churches have given a grant of £2,000 and Listed Places of Worship have given £590 towards the chapel repairs.

We are hugely grateful to local people who helped us raised £1500 at the Porch Swing Blues concert, £1800 in coffee mornings (amazing!!), £703 at the Christmas Tree festival, the craft stall raised £632, and Hymns and Pimms raised £45 - this all totalled £4,705.

#### How can you help?

Please continue to support our fundraising events which are advertised around the village. Visit our coffee morning to enjoy social time with your local community and help by making a donation.

You can make a one-off or regular donation by using this link, which will also enable us to claim Gift Aid:

<https://www.parishgiving.org.uk/donors/find-your-parish/woodchurch-all-saints-ashford/>

You can also use this QR code or contact Reverend Sue for other ways to pay

[denswoodrector@gmail.com](mailto:denswoodrector@gmail.com)



Parish of  
**DENSWOOD** 



**SUNDAY 3<sup>RD</sup> AUGUST**

**6 PM**

**ALL SAINTS  
WOODCHURCH**

**EVERYONE  
WELCOME!**

Dear Friends, Last Spring, All Saints set up a group called 'When we were Young'. This group was intended to help with memory loss. Something we all suffer from as we get older.



We would now like to extend this group to people who find themselves alone, isolated, bereaved or just in need of company now and again. An opportunity to share with like-minded people in a safe and confidential environment.

We will be meeting in the cabin on the Guide and Scout site in Lower Road, Woodchurch once a fortnight starting on Friday 15<sup>th</sup> August from 10:30 to 12:30. Our aim is to provide an atmosphere of friendship and peace a chance to chat with one another over light refreshments.

If you are interested in joining, please let Rev Sue on [01233 820266](tel:01233820266) or Ann on [07754949111](tel:07754949111).

Future Dates are as follows but are subject to change.

15.8.25, 29.8.25, 12.9.25, 26.9.25, 10.10.25, 24.10.25, 7.11.25, 21.11.25, 5.12.25 and 19.12.25

#### Items For Future Newsletters

Please send them to:  
[enquiries@woodchurchhub.uk](mailto:enquiries@woodchurchhub.uk)

The HUB is pleased to welcome PC Darren Laker (our local community police officer). PC Laker will be holding regular monthly surgeries at the HUB towards the beginning of each month - the exact times will be dependant on shifts. This month he will be available to answer your questions on the 28<sup>th</sup> of July from 10-11am. These sessions are open to all residents living in Rural South Ward (includes Woodchurch).

### SURGERIES AT THE HUB

Each month the following organisations hold public, free, surgeries in Woodchurch HUB where you can come along and discuss any questions that you may have directly with them.

#### Kent Police



PC Darren Laker will be available to answer your community policing questions from 10am to 11am at the beginning of each month. The precise timing will depend on his shifts but details will be included each month in the calendar on the front page of the Newsletter.

#### Social Prescribers



The Social Prescribers hold confidential consultation clinics on the 1<sup>st</sup> Thursday of each month from 1pm to 4pm.

#### Ward Councillor for Weald South



Cllr David Ledger holds monthly "Meet your Councillor" surgeries on the 2<sup>nd</sup> Wednesday of each month from 11:00am to 12:00pm

#### Ashford Citizens Advice



Ashford Citizens Advice holds confidential consultation clinics on the 2<sup>nd</sup> Thursday of each month from 1pm to 3pm.

#### Neighbourhood Watch



Peter New from COMMUNITY NEIGHBOURHOOD WATCH holds monthly surgeries on the 4<sup>th</sup> Thursday of each month from 1:00pm to 3:00pm

The history of supersonic jet liner Concorde proved to be a popular topic for Woodchurch WI's June Open meeting. The talk by Guy Bartlett was well received by members and guests. They were given a brief history of Concorde's construction, told what made it unique and the history of its flight.



In November 1956 the Supersonic Transport Committee discussed with France the feasibility of jointly building a supersonic passenger jet. Ultimately twenty planes were built. The Ogival wings, (rounded triangular rather than geometrical delta shaped) gave best lift and performance. In 1967 the first completed Concorde was rolled out in Toulouse. Its maiden flight was March 1969, lasting 27 minutes. Brian Trubshaw from the UK and France's Andre Turcal were the first pilots.

Concorde entered commercial service in 1967, jointly operated by BOAC and Air France. Flights continued until July 2000 when an Air France Concorde burst into flames on takeoff from Charles de Gaulle airport. All the passengers were killed. All Concordes were grounded until modifications were carried out before flights recommenced. The final flight took place on 26th November 2007 when Concorde went back to Filton, Bristol.

Some interesting facts include its take off speed being 250mph, landing speed 187mph, cruising altitude was 11 miles, Passengers travelling at Mach1 never heard the sonic boom from inside the aeroplane - they were travelling faster than the speed of sound! Travel time from UK to USA was 2 hours, 52 minutes.

Although none of the Concordes are still flying it is still possible to see one. The nearest to us is at the IWM Duxford and another at Brooklands Museum.

Our next meeting is Joe Mendell with a talk entitled "Bob Newhart Rides Again"; the competition will be something synonymous with Nottingham. Our August meeting will be for members only and is a trip on the Tenterden Railway to Bodiam and will include a cream tea en route.

For further information please find our website at [Woodchurchwi.weebly.com](http://Woodchurchwi.weebly.com) or our Facebook page at [www.facebook.com/WoodchurchWomensInstituteEastKent](https://www.facebook.com/WoodchurchWomensInstituteEastKent)

### Treasurer Wanted - Woodchurch Memorial Hall

After many years in the role, the current treasurer has decided that it is time to retire. He has let us know that he intends to pack away his trusty abacus after the next AGM (April 2026). The Memorial Hall is therefore looking for a new treasurer, initially to work with him and the committee over the next few months before taking over the roll.

If you would like to be part of the friendly, dynamic team that manages an important village resource, please email [secretary.wmhall@gmail.com](mailto:secretary.wmhall@gmail.com) for more information - or leave your details at The HUB and we will contact you.







## FROM PETER NEW NEIGHBOURHOOD WATCH



A very important part of a strong Community Neighbourhood Watch is about ensuring that all crimes, attempted crimes and even failed crimes are reported.

That first tells us a crime has occurred and can we give better quality Crime Prevention out to the community from lessons learnt. Yes, to be frank that is about keeping you safe and secure from learning from victims of crimes.

When people suffer a small theft for example from a garden shed. They are not going to claim on house insurance for say £50 so they don't need a crime number, so they do not inform the police, and we all go about in blissful ignorance.

Suddenly a serious shed theft occurs with the loss of a motorbike, golf clubs and expensive fishing gear and it is only then we hear of 4 other shed thefts over recent days.

Had we known we could have put out an appeal for the first crime and warnings and alerts quickly to follow raising awareness in the community.

The police may have faults, but they are not clairvoyant! They must be told/called.

Reporting first alerts us to the fact criminals are active in the area. Then we can try and prevent other thefts in the locality. Next, we can appeal for any witnesses, CCTV, Camera Doorbell and even Dashcam footage to try to help any investigations. Then any information about the crime we can then put out better quality crime prevention

To help you with reporting options I have set out the guidance in this report.

The most important matter to get across to you is do not hesitate to call the police. Especially in a rural location where a police attendance will take longer. Get that call away and in most cases that needs to be 999, especially if crimes are in progress or you feel about to happen.

In my past working life in the fire service nobody ever hesitates to call the fire brigade. They still have the message loud and clear **"IF IN DOUBT CALL US OUT"**. Do not fall into the trap of "The police are too busy" The Police won't come"

Do not be concerned about using 999. Let Force Control deal with urgency and attendance. They may downgrade a call however they may deem an immediate response is required. Control has the full picture. Our duty is to make the call.

**PLEASE JOIN WOODCHURCH NEIGHBOURHOOD WATCH** (its completely free, nothing to do other than read and stay safe) Email and phone number below.

STAY SAFE, SECURE, ALERT and VIGILANT

Thank you for your support, Peter

Peter New ([peternew1@aol.com](mailto:peternew1@aol.com)) and 07768437422.  
Community Neighbourhood Watch

## Contacting Kent Police



Report a non-urgent crime or incident online at [www.kent.police/report](http://www.kent.police/report) or click the **Live Chat** button



In an emergency, if crime is in progress or life is in danger, call **999**



If you are hearing or speech impaired, use the textphone service **18000** or download the **BT Relay app**



Sign up to [www.MyCommunityVoiceKent.co.uk](http://www.MyCommunityVoiceKent.co.uk) to receive and respond to community alerts from your local officers



Email your local policing team go [www.kent.police.uk/yourarea](http://www.kent.police.uk/yourarea)



Find us on [Facebook.com/kentpolice](https://www.facebook.com/kentpolice)



Follow us on Twitter [@kent\\_police](https://twitter.com/kent_police) or find your local account at [www.kent.police.uk/yourarea](http://www.kent.police.uk/yourarea)



Follow us on Instagram [@kentpoliceuk](https://www.instagram.com/kentpoliceuk)



For non-urgent issues, if you are unable to get online, call **101**



**Kent Police**

[www.kent.police.uk](http://www.kent.police.uk)

### Tenterden Cycling Club

We are a friendly and sociable club which meets on Wednesdays and Sundays at St Michael's Recreation Ground, Ashford Road, St Michael's, Tenterden at 9.30am.

Our Easy-Riders Group is very welcoming and relaxed and our rides always include a nice coffee (and cake!) stop to chat and refuel.



All are welcome, no matter what your cycling ability; no special clothing, just an enthusiasm to be out with like-minded people cycling along our lovely country lanes.

Please see our Website for further details  
[www.tenterdencycleclub.com](http://www.tenterdencycleclub.com)  
or email: [tn30cycleclub@gmail.com](mailto:tn30cycleclub@gmail.com)



## Rural roads are not racetracks

Whatever road you drive on, remember who you share the road with. Always drive at a safe speed for the road conditions and never exceed speed limits.





## Evening Tour around the Cutting Garden

Brook Farmhouse, Woodchurch, TN26 3SP

**Contact:** 07960449235, [www.woodchurchcottageflowers.co.uk](http://www.woodchurchcottageflowers.co.uk)

- Tuesday 1st July 2025
- Tuesday 5th August 2025
- Tuesday 2nd September 2025

Cost: £10 per person Time: 6.30-7.30pm



## Woodchurch Yard Together ("WYT")

Our next social gardening weekend in the Churchyard is:

5<sup>th</sup> & 6<sup>th</sup>  
July

[woodchurchYardTogether@btinternet.com](mailto:woodchurchYardTogether@btinternet.com)



WoodchurchYard Together

## Woodchurch Village Shed

### Village Shed

We have to say thank you to our latest and largest grant from Kent Community Funding for helping us move forward at a faster pace.



Thursday 26th June was our official opening day. We are now functioning as a Shed. It is still work in progress but we are forever evolving.

We have a number of projects underway and our members are working hard to fulfil them all as soon as we can.

We meet on a Thursday at the Community Centre at 10am until approx 1pm. You can come along to simply talk or get involved in one of our projects. The entry fee is £3 a session and includes tea/ coffee and biscuits.

We now have our own email address which is:

[woodchurchvillageshed@gmail.com](mailto:woodchurchvillageshed@gmail.com)

# SATURDAY 19TH JULY

19th July  
2025

Begins 12pm  
Midday



2:15pm  
Presentation

Continuing  
138 years of  
our Village heritage

Entry forms available to download from  
[www.woodchurchinbloom.com](http://www.woodchurchinbloom.com) or via Woodchurch HUB

## TIMINGS FOR THE DAY

9 -10am

Entries drop off at the Hall &  
sCAREcrows drop off on the Green

12 Noon

SHOW OPENS

(Stalls, food, Hall re-opens)

1.45pm

sCAREcrow Exhibition awards

2.15pm

Presentations on the Green

4pm

SHOW CLOSES



## Eleanor Johnson Your Woodchurch Travel Agent



Summer/Winter Sun Holidays City Breaks Ski  
Longhaul Holidays Cruise Safari UK Breaks



**NO FEE  
SERVICE!**

07772 710 996

eleanor@travologytravel.co.uk  
www.travologytravel.co.uk/eleanor

100% Financially protected  
ATOL, IATA protected



## GET SPRING READY

WITH ERNEST DOE POWER | ASHFORD

Hendon Barn, Woodchurch, Ashford, Kent TN26 3QP  
Tel: 01233 224860

ernestdoeshop.com

**ernest DOE**  
POWER



Landscaping in Ashford, Maidstone,  
Heathfield and the surrounding area  
Paving company covering Kent

For Enquiries:  
07793 107246  
07528 230530

info@kentbestlandscapers.co.uk

www.kentbestlandscapers.co.uk

Kent's Best Landscapers



Soft and  
hard landscaping

Garden and  
planting design

Garden patios, paving,  
fencing and buildings

Garden and porcelain paving

New driveways

Stables build and  
equestrian field fencing

Turfing

Garden irrigation

Outside sound and lighting

Summer houses

Composite and natural decking



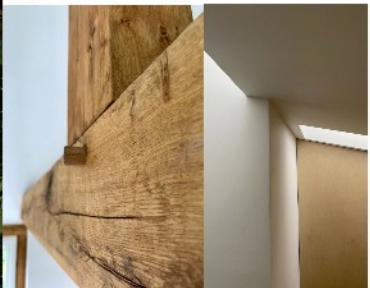
Architect with > 25 years of experience

M: 07967 817 327

www.benhebarchitecture.co.uk



ARCHITECTURE  
PLANNING APPS.  
BUILDING REGS.  
CONSTRUCTION



## WOODCHURCH

### 'Bob Ross' Style Painting Classes



Paint a lovely painting in one day!  
£40 includes all materials.

Monthly Sessions  
Call David: 07974 891795

To help keep the Newsletter free for the village  
please become one of our sponsors, or give a  
donation if you can at.

[www.woodchurchhub.uk](http://www.woodchurchhub.uk) or at The HUB



Everything **Outside**

Bringing New Life  
To Your Garden

For A Quick Quote From A Company You Can Trust Call

☎ 01580 766 232 ☎ 07795 465 861

## Welcome To Everything Outside

We cover a wide range of services to meet the requirements of our ever-growing client list, if you are looking for a company you can trust to provide a high standard of quality work covering

- ✓ Gardening
- ✓ Garden Design
- ✓ Fencing
- ✓ Clearance
- ✓ Landscaping
- ✓ Hedge Cutting
- ✓ Tree Surgery
- ✓ Digger Work

and much more. Then call our experienced team today on 07795 465 861. To view our full range of services, click on the link below.

Our head office is based in Tenterden, Kent and means we are in the perfect location to proudly service Kent and East Sussex. All our services are tailored to each job we carry out and our team are experience in all aspects of fencing and landscaping services making us your number one choice for all work you require.

**Great Work**

**Great Reputation**

**Great Price**

## VERNACULAR HOMES

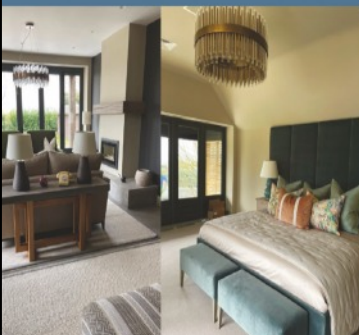
— design & build —



We work with homeowners and developers on new builds, barn conversions, renovations, restorations, remodelling and extensions.

Trust our experienced team to manage every step to bring your ideas or dream home to life.

[vernacularhomes.com](http://vernacularhomes.com) 01233 861177



## Karen Stevens

Massage and Reflexology

Massage and Reflexology from my treatment room in Woodchurch

To book or to discuss your treatment needs call me on:

☎ 07808675251

## OUR SPONSORS

# fab feet

Professional Foot Healthcare

[www.fabfeethealthcare.co.uk](http://www.fabfeethealthcare.co.uk)

**Delivering high quality Podiatric care in the  
comfort of your own home.**

Providing a reliable and friendly service of professional  
treatments for all of your foot ailments.

Call Michelle on:

**Tel: 01233 731207**

**Mob: 07766 705824**

Registered & Insured



*Remedial massage therapy.*

**Your Local Woodchurch Massage Therapist**

- Remedial Massage
- Sports Massage
- Holistic Massage

- Ultrasound Therapy
- Electrotherapy

- Injury Treatments & Rehabilitation
- Rehabilitation Taping/Strapping
- Athletic Taping/Strapping



**Bookings - 07799221043**

[www.musclewhisperer.org.uk](http://www.musclewhisperer.org.uk)

**Treatment Room - Little Vale TN26 3QW**



[musclewhisperer@outlook.com](mailto:musclewhisperer@outlook.com)



## WOODCHURCH COTTAGE FLOWERS



**AN ARTISAN FLORIST & FLOWER GROWER, WE OFFER  
BOUQUETS, FAREWELL ARRANGEMENTS AND  
WEDDING FLOWERS.**

**ALL GROWN ON OUR SMALL HOLDING IN  
WOODCHURCH. WE WORK WITH NATURE AND THE  
SEASONS, NO CHEMICAL OR PESTICIDES USED**

call or text 07960 449235

[www.woodchurchcottageflowers.co.uk](http://www.woodchurchcottageflowers.co.uk)





Weekly-  
Every Wednesday 10:00

Annexe Hall  
Woodchurch  
Kent  
TN26 3PB

# Yoga

Beginner Friendly  
Everyone Welcome



Drop in £10  
Preregister £8

[mindfulmeadowyoga.co.uk](http://mindfulmeadowyoga.co.uk)  
[mindfulmeadow@yahoo.com](mailto:mindfulmeadow@yahoo.com)



## WOODCHURCH

SHOP ✿ BAR ✿ WINE TASTING ✿ TOURS

Thursdays to Sundays 11am - 5pm

<http://woodchurchwine.co.uk> tel:01233 860276

## KENT

HOLIDAY COTTAGES

+44 (0) 1233 860 293

[info@kentholidaycottages.co.uk](mailto:info@kentholidaycottages.co.uk)

### DK Plastering Services

All plastering work carried out  
Fully Insured  
Professional Workmanship



For a clean & tidy job call David  
07974 891795  
[dk.plastering@hotmail.c.uk](mailto:dk.plastering@hotmail.c.uk)



Cranbrook Fishmongers are now doing  
home deliveries in Woodchurch

**EVERY FRIDAY & SATURDAY**

Please call for more information

## FRESH FISH

Jim: 07866 741288

## An evening with ... ABBA Chique

Sunday 10th August 7.30 pm

The hottest tribute to ABBA



**Tickets £20**  
available at  
Woodchurch HUB,  
Carley Butchers  
or call  
07798 566849

Tea, coffee &  
food will be  
available to  
purchase.  
You are welcome  
to supply own  
alcohol

**Dress to impress!**

**The Jean Mealham Centre,  
Woodchurch TN26 3SQ**



### The SEND Consultancy Group

EHCP | Appeal | Tribunal

Experienced and IPSEA-qualified  
SEND Law consultant, providing  
independent professional guidance  
and specialised support

#### OUR SERVICES:

- Advice Appointments
- EHCNA parental requests
- EHCP Review & Draft Checks
- Annual Reviews
- Appeal & Mediation Support
- Mediation
- Tribunal Support & Representation
- And other bespoke services

**Contact Us: 0333 772 3845**

[info@thesendconsultancygroup.co.uk](mailto:info@thesendconsultancygroup.co.uk)

[thesendconsultancygroup.co.uk](http://thesendconsultancygroup.co.uk)



**'The Singing Sippers'**  
Woodchurch Choir

**Why not come along to our Woodchurch FUN Choir!**

**Its FREE, no talent required—just enthusiasm and a sense of fun!**

**We meet on the first Thursday of the month, 7.30pm in All Saints Church, Woodchurch**

**Why not come along to our free, fun, feel good & 'just enthusiasm required' Woodchurch Choir**

**We'll also be singing at some Village events – the first one is Woodchurch Flower & Produce Show!**

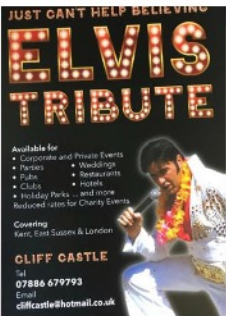



# ELVIS Rocks Woodchurch

**Saturday 20th September 2025**  
**Elvis Tribute (Cliff Castle)**

7.00pm - 9.15pm approx  
including a 45 minute break for refreshments  
(ploughmans supper available for additional £5 must be booked in advance)

*Proceeds on behalf of Woodchurch Museum*

**Tickets: £20 from Woodchurch HUB or Richard 07798 566849**

**Venue: The Jean Mealham Centre, Lower Road, Woodchurch TN26 3SQ**

# Rest & Restore

**Weds 2<sup>nd</sup> July 11am-12noon**

**Woodchurch Memorial Hall**

**Run by Jess Williams, Yoga & Somatic Coach**



*This relaxing workshop is designed for those who are caring for someone, providing a calm & safe environment to release tension*

**Please email [yogijessw@gmail.com](mailto:yogijessw@gmail.com) to find out more & secure your space**




## WOODCHURCH VILLAGE LIFE MUSEUM

Thank you to all the subscribers to the WVLM lottery draw. You will see the May winners of 2025 below.

There is still time to be included in the draw and so if you still wish to subscribe (£10 for the latter 6 months of the year) please contact [enquiries@woodchurchheritagetrust.uk](mailto:enquiries@woodchurchheritagetrust.uk) or Woodchurch HUB on 01233 861381 - or come in to The HUB.



**June 2025 Draw Results**

<b>1st prize</b>	<b>£50</b>	<b>Roy Sharp</b>	<b>556</b>
<b>2nd prize</b>	<b>£30</b>	<b>Catherine Masters</b>	<b>298</b>
<b>3rd prize</b>	<b>£20</b>	<b>Ann Clarke</b>	<b>122</b>

For more information contact us at [enquiries@woodchurchheritagetrust.uk](mailto:enquiries@woodchurchheritagetrust.uk) or phone 01233 860586 or visit our Web site [www.woodchurchheritagetrust.uk](http://www.woodchurchheritagetrust.uk)

# Simple Kent Funerals

caring • flexible • imaginative • economical • local

Applefield Cottage, Redbrook Street, Woodchurch TN26 3QS

Call Toby on 07806 613297 (24/7) • [www.simplekentfunerals.co.uk](http://www.simplekentfunerals.co.uk)

