



WOODCHURCH COMMUNITY NEWS

The village community working together

August 2025

Contact us: Telephone 01233 861381 Email enquiries@woodchurchhub.uk Web www.woodchurchhub.uk

OVER 1,000 COPIES distributed every month in the Woodchurch area

WOODCHURCH Community Calendar



Weekly events:

Saturdays:

- Boot Camp** 9:00am-10:00am on the Village Green
Museum Open 10:00am to 4:00pm

Sundays:

- Museum Open** 10:00am to 4:00pm
Outpost Church 10:30am-11:45pm in the S&G Community Centre, Lower Road
Karate 10:00am-12:00pm in the Jean Mealham Centre

Mondays:

- Pilates** 9:00am-10:00am in the Memorial Hall
Tai Chi and Qigong 10:00am and 11:00am at the S&G Community Centre
Knit and Natter 2:00pm - 3:30pm in the Jean Mealham Lodge
Line Dancing 2:00pm - 4:00pm in the Jean Mealham Centre
Junior Tennis coaching Red-3:30pm, Orange 4:30pm, Green/Hand Ball 5:30pm, Hard Ball 6:30pm at the Tennis Club
Beavers 6:00pm-7:00pm in the S&G Community Centre
Group Fitness Strength Training 6:15pm and 7:15pm in the Memorial Hall

Tuesdays:

- Pilates** 9:00am-10:00am, 10:15am-11:15am and 6:00pm-7:00pm in the Memorial Hall
Coffee Morning 10:00am-12:00pm in All Saints Church
Puzzle Club 2:00pm-4:00pm in the Jean Mealham Lodge
Cubs 5:30pm-7:00pm in the S&G Community Centre
Karate 7:00pm-9:00pm in the Jean Mealham Studio
Salsa Dance 7:30pm-8:30pm in the Jean Mealham Centre
Scouts 7:30pm-9:00pm in the S&G Community Centre

Wednesdays:

- Pilates** 9:00am-10:00am in the Memorial Hall
Yoga 10:00am-11:00am in the Memorial Hall
Museum Volunteers - maintenance and gardening 9:30am-12:00pm at the Museum
Social Pop-In 2:00pm-4:00pm Tea and coffee and boot fair marquee at the Jean Mealham Centre
Junior Tennis coaching Red/Orange-4:00pm, Green/Hard Ball-5:00pm the Tennis Club
Rainbows 5:00pm-6:00pm in the S&G Community Centre
Fish and Chips 4:30pm-7:30pm in the Village Car Park
Brownies and Guides 5:45pm-7:15pm in the S&G Community Centre

Thursdays:

- Forest Schools Summer Specials** 10:00am-12:00pm under 10s
Art Society 10:00am-1:00pm in the Memorial Hall
Group Fitness Interval Training 6:00pm-7:00pm in the Memorial Hall
Badminton 7:00pm-11:00pm in the Memorial Hall
Karate 7:00pm-9:00pm in the Jean Mealham Centre

Previous editions of the Newsletter can be found on The HUB Web site www.woodchurchhub.UK

Fridays:

- Zumba with Hannah** 9:30am in the Memorial Hall
Righteous Oaks Forest Schools 10:00am-12:00pm under 5s Stay & Play
Squirrels 5:30pm-6:30pm in the S&G Community Centre
Adult Tennis coaching 5:30pm at the Tennis Club

Other Events:

- Sat 2nd and Sun 3rd **Weald of Kent Steam and Country Show**
Football Woodchurch vs Smeeth - 2:00pm on the Village Green
Sun 3rd **Football** Woodchurch 1st vs Reserves - 10:30am on the Village Green
Morning Worship - 11:00am at All Saints Church
Hymns and Pimms - 6:00pm at All Saints Church
Mon 4th **CARM** - 10:30 in the Memorial Hall
Tue 5th **Cottage Flowers evening tour** - 6:30pm at Woodchurch Cottage Flowers
Thu 7th **Social Prescribers** - 1:00pm to 4:00pm in The HUB
Singing Sippers Choir - 7:30pm at All Saints Church
Sat 9th **Woodchurch Yard Together** - All weekend at All Saints Church
Sun 10th **Football** Woodchurch Reserves vs Burton Grove - 10:30am on the Village Green
Holy Communion - 11:00am at All Saints Church
An Evening with ABBA Chique - 7:30pm at the Jean Mealham Centre
Mon 11th **PPG Meeting** - 6:00pm in the Memorial Hall Annexe
Wed 13th **Borough Councillor Surgery** - 11:00am to 12:00pm in The HUB
Thu 14th **Citizens Advice** - 1:00pm to 3:00pm in The HUB
Fri 15th **When We Were Young** - 10:30am at the Scout and Guide Community Centre
Sat 16th **Football** Woodchurch Reserves vs Ticehurst - 2:00pm on the Village Green
An Evening of Musical Theatre - 7:00 at the Jean Mealham Centre
Sun 17th **Football** Woodchurch Reserves vs Radnor Park - 10:30am on the Village Green
Sun 24th **BCP Holy Communion** - 8:00am at All Saints Church
Tue 26th **PC Laker Surgery** - 10:00am to 11:00am in The HUB
Thu 28th **Neighbourhood Watch Surgery** - 1:00pm to 3:00pm in The HUB
Parish Council Meeting - 7:00pm in the Memorial Hall Annexe
Fri 29th **When We Were Young** - 10:30am at the Scout and Guide Community Centre
Sat 30th **Proms in the park** - 2:00pm and 7:00pm at the Jean Mealham Centre
Sun 31st **Football** Woodchurch Reserves vs Hythe Green - 10:30am on the Village Green

WOODCHURCH SURGERY UPDATE

People have started to mention the C-word again! Covid and flu immunisations are going to be back in again at the end of September. To celebrate, we are inviting people to join in and get involved by getting a jab. We are going to be doing clinics on Saturday 4th October and Saturday 18th October which will be by appointment and multiple clinics within normal surgery hours. We will probably be sending out texts to help people book their appointment electronically in the first part of August.



Flu eligibility is for those people age over 65 years old, pregnant women, people with chronic illnesses or immunosuppression, social care and health care workers. We also invite carers of the elderly and the immunosuppressed to get a vaccine to protect the more vulnerable.

Covid eligibility is for those over 75 years old, residents in care homes for older people and those that are severely immunosuppressed (long-term steroids, on chemotherapy, lymphoma type illnesses).

We try to keep a list of people that are housebound, however, it would be worth letting us know if you have become housebound in the last year so that we can arrange to do your jabs at home.

We are all delighted that our trainee, Dr Chika Ohio, has sat his final exam and passed with flying colours. Amazingly, he opened his results in front of everyone and thankfully it was great news. Sadly, that means that he qualifies as a GP on 5th August and will therefore leave us and we hope you join us in wishing him well for the future.



We are expecting a new trainee, Dr Chijoke Amos, to replace him in August and we appreciate the usual Woodchurch Welcome. We will then be bedding in our team of doctors for the future which consists of myself, Dr Rachel Hodgkiss, Dr Gloria Arinaitwe, Dr Banin Ahmed and Dr Stanley Tso. Hopefully with the highest number of doctor sessions ever we won't need to use locums, although we expect to see some cameos from Dr Faye Hinsley and we might even roll out Dr Clare Smith now and then.



On behalf of the surgery, I wish you all a wonderful August and holiday season - Jack Hickey, GP

Village Newspaper Collections

Unfortunately with the decline in the use of newspapers and the increasing costs of having them recycled, Woodchurch Scouts have had to take the difficult decision to stop collecting newspapers from around the village. Thank you to everyone who has supported us in the past.




Surgery Opening Hours

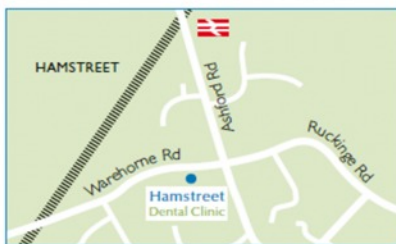
Monday to Friday 9am to 5pm



Where to find us...

Hamstreet Dental Clinic
Warehorne Road
Hamstreet
Kent TN26 2JJ

 Find us on facebook



Tel: 01233 733848

Email: hamstreetdentalclinic@gmail.com



Woodchurch Patients Participation Group (PPG)

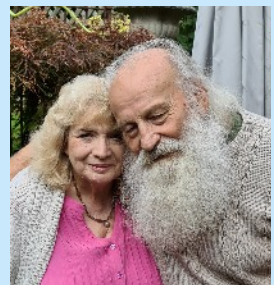
Our next PPG meeting is Monday 11th August in the Memorial Hall Annexe starting 6pm.

Our Speaker will be Judy Keay, Association Visitor Co-ordinator for the Motor Neurone Disease Association.

All Woodchurch Surgery Patients welcome!

Daphne Loynes to visit Woodchurch - Sun 17th August

Many of you will have fond memories of Geoff and Daphne Loynes from when they were living in the village. Sadly Geoff passed away in December last year and the Museum has created an exhibition in his memory, highlighting his eventful career in animation and his tireless work in support of the village.



Daphne and family will be returning to Woodchurch on Sunday 17th August and will be at the Museum from 10:30am till midday. If you would like to meet with Daphne and share some of your memories please come along to the Museum. Tea and biscuits/cakes will be provided.

All Saints Church



Dear Friends

Greetings from my desk bathed in glorious summer evening sunshine.

Since I last wrote to you in June, I have been ordained priest. Thank you for your generous good wishes, gifts and prayers. I feel richly blessed and supported by everyone. I have led my first service of Holy Communion and blessed my first marriage. In the coming weeks I will be taking my first weddings. I am incredibly excited and honoured to be alongside these couples at this significant time in their life journeys together. I look forward to continuing to serve you, in your joys and sorrows, high and lows and when things are simply ticking along.



Please remember that all three churches in the Parish are open all day every day. They are cool places for rest and for fun on hot summer days. Each church has a children's play area, quiet spaces and a toilet. The churchyards are buzzing with life to explore or to sit on a shady bench and quietly soak in the delights of nature.

While visiting a churchyard or church, you might snap a photo of a creature. Please do feel free to upload it to #GreatAndSmall. From 21st July to 31st August, the Church of England is celebrating animals, pets, wildlife, animal stained glass, animal carvings in and around churches. Share your photos on social media using #GreatAndSmall. More details can be found at: Church of England's summer campaign.

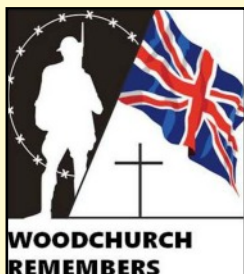
If you are looking for cool refreshments, a warm welcome, somewhere to natter, somewhere to play, somewhere to be restful:

- St Margaret's, Bethersden, 10am-12pm, Thursday 7th, 14th, 21st, 28th
- St Mary's, High Halden, 2:30-4:30pm, Wednesday 6th, 20th, 27th
- All Saints, Woodchurch, 10am-12pm, Tuesday 5th, 12th, 19th, 26th

Prayers and warm wishes for a peaceful summer
Maria

Woodchurch Remembers VJ Day 80

On 15th August 1945 the Japanese Emperor announced unconditional surrender to the Allies. The surrender document was formally signed on board a US Battleship on 2nd September, ending a war that had begun six years earlier on 3rd September 1939. The 15th August is now marked annually as VJ Day and this year is the 80th anniversary. The occasion will be marked by a national two minutes silence at midday and Woodchurch Remembers will lay a wreath at the war memorial later at 7PM. If you can please observe the silence and of course everyone is welcome to attend the simple wreath laying. Don Grant



Parish of
DENSWOOD 

HYMNS
& Pimm's



SUNDAY 3RD AUGUST

6 PM

ALL SAINTS
WOODCHURCH

EVERYONE
WELCOME!

AN OPEN AIR EVENING OF MUSICAL THEATRE

THE JEAN MEALHAM CENTRE,
WOODCHURCH

SATURDAY, 16th August
7:00pm

FEATURING
Les Misérables
Hamilton
Guys and Dolls
and many more

Bring your own bottle

Entry by Donation



Parish Council Website: www.woodchurch-pc.gov.uk
**The next Parish Council Meeting is on Thursday 8th August
at 7pm in the Memorial Hall Annexe**

[A Look at Your Parish Council Finances](#)

We closed the first quarter to June 30th 2025 of the Council year with £65,076.96 in its bank accounts.

Total payments in that period were £17,3858.13 and receipts were £29,367.53. After deducting the remaining reserves which have been earmarked for aspirational projects of £28,476.30, this leaves the Parish Council with a general reserve of £36,600.66 to cover running costs through to receipt of the second precept instalment in October /November this year.

The Parish Council is aware that it needs to retain a minimum of £19,480 of the general reserve to ensure that there is no interruption in it's services to the residents in the event of a disruption to it's revenue flow.

2025-2026 FINANCIAL SUMMARY YEAR TO DATE

Bank Balance				
Current Account Balance		£	2,991.98	
Deposit Account Balance		£	62,084.98	
Total A		£	65,076.96	
Total Receipts				
Precept		£	22,325.00	
Other Receipts		£	7,042.53	
TOTAL RECEIPTS		£	29,367.53	
Payments				
				% of Budget
Clerical Services (Staffing)	£	5,032.69		25.55%
Clerical (Finance & Legal)	£	391.66		40.80%
Clerical (Subscriptions)	£	2,181.71		45.55%
Assets/Amenities	£	-		0.00%
Village Green Maintenance Agreement	£	1,271.00		26.15%
Grants & Donations	£	916.40		35.94%
Earmarked Reserve Payments	£	1,073.70		3.63%
Outstanding 2024-2025 Payments	£	4,812.00		
VAT Paid on Above	£	1,678.97		
TOTAL PAYMENTS		£	17,358.13	
Earmarked B				
	Budget	Used	Remaining	% of Budget
	£ 29,550.00	£ 1,073.70	£ 28,476.30	3.63%
Running Cost Reserves Available C (A-B)			£ 36,600.66	
Parish Council Finances to March 31st				
Precept Due D	£	44,650.00	£ 22,325.00	£ 22,325.00
Running Cost Payments Remaining E	£	38,960.00	£ 9,793.46	£ 29,166.54
General Reserve C+D-E				£ 29,759.12
				25.14%
Less Minimum Emergency Reserve	£	19,480.00	£	-
			£	19,480.00
Contingency Reserve				£ 10,279.12
VAT to Recover				£ 1,678.97

[What About The Finances For The Rest of The Year?](#)

After accounting for the next precept instalment of £22,325 and allowing for the spending of all remaining running cost payments of £29,166.54 this would leave the bank balance of Parish Council at £58,235.42.

[Where does this leave the real finances of the Parish Council?](#)

By deducting the outstanding earmarked reserves of £28,476.30 the Parish Council would be left with around a £29,759.12 general reserve at the end of the year and £10,279.12 of unallocated contingency reserve after allowing for the minimum reserve required of £19,480.

[Brattle Bus Shelters](#)

Kent County Council has written to the Parish Manager explaining that the Brattle bus stop was removed for accessibility reasons. After many emails on the subject, Kent County Council has apologised for the confusion caused, and has stated that two new shelters will now be erected, one in each direction.

[Planning Applications Considered Over The Last Two Months](#)

Application	Location	Parish Council	Ashford Planning
PA/2025/0438	Playing Field, Rectory Close	Support	Waiting Decision
OTH/2025/0184	Land between, 82-120 Front Road	Unable to comment until traffic measures resolved	Approve
PA/2025/0682	12, Kirkwood Avenue	Support	Approve with Conditions
PA/2025/0536	Maidenwood Farm, Haycross Lane	Object on the grounds it doesn't appear to comply with HOU5	Waiting Decision
PA/2025/0688	Cob Tree Meadow, Brook Street	Support Subject to Water Availability	Waiting Decision
OTH/2025/0908	37 The Green	Submitting comments to ABC outlining concerns	Waiting Decision
NOT/2025/0938	Land South of Maywood Farmhouse, Frog Hole Lane	Support, subject to clarification of associated operational development	Prior Approval Given
PA/2025/1167	Hendon Barn, Shadoxhurst Road	Support	Waiting Decision
PA/2025/1192	Land adjacent Waverlea, Susans Hill	Object	Waiting Decision
PA/2025/1201	Land South of Warehorne Road abutting Roughlands Wood	Object	Waiting Decision
PA/2025/1173	Woodchurch Church Of England Primary School	Requested more information Waiting	Waiting Decision
PA/2025/1271	Balcony House, Brook Street	Support	Waiting Decision
NOT /2025/1240	Agricultural Buildings 200 meters Northeast of Great Robhurst Barn	Support	Waiting Decision

[Can You Help?](#)

The Parish Council is looking for a local handy person, with public liability insurance, that could provide an estimate for replacing the the last 6 cast iron litter bins with the new plastic ones.

Please contact the Parish Manager on **07793 807863** or email clerk@woodchurch-pc.gov.uk



[Woodchurch Windmill](#)

There has been no further information from Ashford Borough Council regarding their plans for the future ownership of our Mill.

AUDITIONS

Beauty and the Beast

Pantomime

Tuesday 26th August & Wednesday 27th August
6:30pm to 8pm

Who will you be?



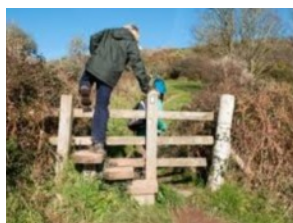
Woodchurch
 Memorial
 Hall Annexe

Woodchurch Footpath Society

In the 1970s and 1980s Woodchurch had an active Footpath Society that regularly walked the rights of way around the parish of Woodchurch with the purpose of protecting, improving, and promoting the use of our public rights of way (footpaths, bridleways, permissive paths etc.). The society helped to monitor their condition, defended them against obstruction or closure, and encouraged their use for recreation, health, and sustainable transport. The society also produced a selection of their walks in booklet form for all to enjoy. These were recently updated and are available from The HUB



The HUB has recently received enquiries as to the best way that our extensive network of footpaths, bridleways and permissive paths can be preserved - especially in light of the amount of development currently under way within the village. If you are a keen (or casual walker) who would like to help preserve our diverse village pathways, this is where you could help.



If you would be willing to become part of a reborn Footpath Society please contact The HUB and leave your contact details. If you would like to help organise the society then we would especially like to hear from you.



We thoroughly enjoyed seeing everyone at our Flower & Produce Show on 19th July – thank you to everyone who came along, entered the Show, had a stall, helped out or enjoyed meeting up with Village friends!

We loved seeing so many smiley faces and seeing everyone enjoying our friendly Village atmosphere.

A Big Thank you too to Katie Lam, our local MP who joined us to open the Show, Annie Calder Marshall for doing the presentations and our brilliant judges.

All entries were fantastic and special congratulations to all our winners!



Maybe the society is not for you and you would prefer to continue to simply walk our network of pathways and would still like to help ensure they remain accessible. During your walks, should you come across pathways that have become blocked or closed, stiles/gates that have fallen into disrepair and are dangerous or footpaths across fields that have become overgrown please do one of the following:



- If you are a member of the Ramblers Association you can report an issue through them
- You can report an issue directly with KCC using their portal www.kent.gov.uk/environment-waste-and-planning/public-rights-of-way
- You can report it to The HUB - giving precise location, description of issue and preferably a photo. We can report it on your behalf.

Not all of the pathways along which we are permitted to walk are legal footpaths or bridleways. To see the definitive map of public footpaths in Kent go to:
[https://webapps.kent.gov.uk/countrysideaccesscams/stand
 ardmapp.aspx](https://webapps.kent.gov.uk/countrysideaccesscams/standardmap.aspx)

The HUB is pleased to welcome PC Darren Laker (our local community police officer). PC Laker will be holding regular monthly surgeries at the HUB each month - the exact times will be dependant on shifts. This month he will be available to answer your questions on the 26th of August from 10-11am. These sessions are open to all residents living in Rural South Ward (includes Woodchurch).

SURGERIES AT THE HUB

Each month the following organisations hold public, free, surgeries in Woodchurch HUB where you can come along and discuss any questions that you may have directly with them.

Kent Police



PC Darren Laker will be available to answer your community policing questions from 10am to 11am each month. The precise timing will depend on his shifts but details will be included each month in the calendar on the front page of the Newsletter.

Social Prescribers



The Social Prescribers hold confidential consultation clinics on the 1st Thursday of each month from 1pm to 4pm.

Ward Councillor for Weald South



Cllr David Ledger holds monthly "Meet your Councillor" surgeries on the 2nd Wednesday of each month from 11:00am to 12:00pm

Ashford Citizens Advice



Ashford Citizens Advice holds confidential consultation clinics on the 2nd Thursday of each month from 1pm to 3pm.

Neighbourhood Watch



Peter New from COMMUNITY NEIGHBOURHOOD WATCH holds monthly surgeries on the 4th Thursday of each month from 1:00pm to 3:00pm



WOODCHURCH
WOMEN'S INSTITUTE

Help Needed!

Are you able to use a computer? Do you enjoy the satisfaction of seeing a good job done well? Woodchurch Women's Institute is looking for someone to be their Treasurer/Bookkeeper. We already have members who will deal with collecting money at meetings and pay it into our bank account. What we are looking for is someone -male or



WOODCHURCH
WOMEN'S INSTITUTE

female- who can enter payments and income into the WI's financial spreadsheets. You do NOT have to be a member of the WI to do this and attendance at their meetings is absolutely NOT necessary.

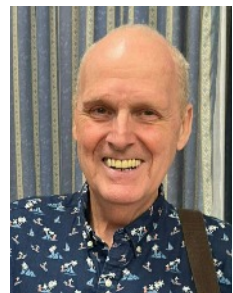
Woodchurch WI was formed in 1927, so we were looking forward to celebrating our 100th birthday in 2027. Alas, this will not be possible if we cannot find someone to take over the books, as we will have to close the society as soon as our present bookkeeper leaves.

If you think you could help us with this please contact our president, Lynn Hall (oaktree44@btinternet.com or 07771541451) for an informal chat. Thankyou.

Bob Newhart died in July 2024. He was America's most successful stand-up comedian, character actor and sit-com artist. So it was appropriate this month to have fellow American Joe Mendell visit Woodchurch WI with his own interpretation of Newhart's work.

Bob Newhart is remembered for his deadpan, observational comedy where he performed as one end of a telephone conversation. At his catholic school he was often the class clown. Growing up in Chicago he gained a degree in business management. After two years of military service he became an accountant before developing a successful career in films and entertainment. He appeared on "Catch 22" as Major Major, as well as playing Papa Elf alongside Will Farrell in "Elf".

Our Speaker Joe Mendell is himself, an enthusiastic amateur dramatics actor and producer. He gave a commanding performance impersonating Bob Newhart's humorously entertaining presentations. We laughed our way through the caretaker's dilemma in the "Empire State Building" when it was being scaled by King Kong. Further merriment was caused by "The Driving Instructor" and Sir Walter Raleigh trying to persuade a salesman that tobacco and coffee would sell well in the UK! Joe caused more giggles along with the exploding shell on the beach and "The Estate Agent". This proved to be a very amusing and entertaining evening. The competition of things synonymous with Nottingham Forest only attracted three entrants. First was Gillian's Robin Hood in a forest of broccoli, second was Lynn's cute teddy bear Robin Hood and Barbara's Nottingham Forest FC postcard and programme was third.



There is no meeting in August. Instead, dressed in our Sunday best hats we shall be enjoying afternoon tea on the Tenterden Railway. On September 9th Martin Newcombe will be presenting "Bats in the Belfry". We look forward to seeing you at 7.15pm in the Memorial Hall.



FROM PETER NEW NEIGHBOURHOOD WATCH



I hope this newsletter finds you and your families all well and continuing to enjoy this lovely summer weather albeit I am sure rural farming communities are hoping for some gentle steady rain.

In my last newsletter I just warned of the types of crime trends that develop in the summer.

Bogus Callers and Rogue Traders will always become an issue around the summer. ALWAYS REMEMBER NEVER AGREE TO ANY UNSOLICITED WORK ON YOUR DOORSTEPS NO MATTER HOW ATTRACTIVE AND CHEAP THE PRICE IS.

Scams which come by landline phone, mobile phone, computer, laptops, tablets, by letter and even face to face on your doorsteps. SCAMMERS RELY ON US ACTING IN A HURRY AND RUSH, SO AGAIN MY CONSTANT ADVICE IS DO NOTHING WITHOUT CHECKING. IF STILL UNSURE DO NOTHING!

Check, check again and if still in doubt do nothing.

I want you to listen to the news and start to anticipate matters that provide criminals with a "business opportunity".

- The Prime Minister and Chancellor announce a U Turn on the numbers of elderly pensioners that will get back their winter fuel payment. For me that's alarm bells and I want it to be for you too! Criminals will quickly seize on that announcement and have scams out hoping to get people to submit their bank details for a repayment or enhanced payment.
- Oasis pop group reforming..... a "business opportunity" bogus tickets, hotels, back stage passes.
- As the summer slips away we have to think about winter scams. Insulation for lofts and cavity wall insulation scams.

It is about thinking everything through and not acting in a rush. Take your time.

As always as the seasons come and go the day-to-day crime trends remain with us.

Cars, vans, motorbikes, cycles, sheds, garages, barns, stables and any form of out building/storage. Internet shopping parcels from doorsteps and special crime trends like domestic heating oil storage tanks.

Rural areas have reduced Anti-Social Behaviour and Criminal damage but we must never say never and along with any crimes please ensure you report every single crime and attempted crime no matter how small.

Yes, there have been reports of catapults in Woodchurch and those matters must be reported. 999 is the best method so we can try and intercept the offenders using them.

Do not make judgements that the police don't care about some crimes. Do not make judgements the police won't come. Do not make judgements the police won't do anything.

Our job is to make the calls. Our job is to give as much intelligence and information to assist the police. Get a crime number and follow up if we feel the response has not been correct.

Nobody every hesitated to call the fire service when I served. No body every wrote on Facebook "I looked out of my window and saw the house opposite on fire they rang 999 instantly. BUT and it's a huge BUT - people continually make poor decisions about calling the police.

Let Force Control make the response and deployment decisions. That's their job. Kent is growing by the week, I know I work hard on new build developments across the district. Kent will need a Police Force to match this growing county. If the Control room and lack of numbers of officers is an issue that is for the Chief Constable, The Crime Commissioner and the Home Office Inspectorate to deal with.

PLEASE JOIN WOODCHURCH NEIGHBOURHOOD WATCH (its completely free, nothing to do other than read and stay safe) Email and phone number below.

STAY SAFE, SECURE, ALERT and VIGILANT

Thank you for your support, Peter

Peter New (peternew1@aol.com) and 07768437422.
Community Neighbourhood Watch

Contacting Kent Police



Report a non-urgent crime or incident online at www.kent.police/report or click the **Live Chat** button



In an emergency, if crime is in progress or life is in danger, call **999**



If you are hearing or speech impaired, use the textphone service **18000** or download the **BT Relay app**



Sign up to www.MyCommunityVoiceKent.co.uk to receive and respond to community alerts from your local officers



Email your local policing team go www.kent.police.uk/yourarea



Find us on [Facebook.com/kentpolice](https://www.facebook.com/kentpolice)



Follow us on Twitter [@kent_police](https://twitter.com/kent_police) or find your local account at www.kent.police.uk/yourarea



Follow us on Instagram [@kentpoliceuk](https://www.instagram.com/kentpoliceuk)



For non-urgent issues, if you are unable to get online, call **101**



Kent Police

www.kent.police.uk



Evening Tour around the Cutting Garden

Brook Farmhouse, Woodchurch, TN26 3SP

Contact: 07960449235, www.woodchurchcottageflowers.co.uk

- Tuesday 1st July 2025
- Tuesday 5th August 2025
- Tuesday 2nd September 2025



Cost: £10 per person Time: 6.30-7.30pm

Hi Everyone

So this month is busy for the football club with Friendlies starting, we have tried to book as many away as possible, but with 4 teams we've had to double book some weekends!



here are the ones booked at the Green -

- Saturday 2nd August - Saturday Firsts v Smeeth 2pm KO
- Sunday 3rd August Sunday first team v Sunday reserves 10:30am KO
- Sunday 10th August Sunday res v Burton Grove 10:30 KO
- Saturday 16th August - Reserves v Ticehurst 2pm KO
- Sunday 17th August - Sunday Reserves v Radnor Park 10:30 KO
- Sunday 31st August Sunday res v Hythe Green 10:30 KO

Training will continue on Wednesday evenings until 13th August when the majority of players return to homewood.

The walking football over 50s and over 60s are also looking for players so if anyone is interested please email Woodchurchfc@gmail.com

Josh - Woodchurch Football Club

Woodchurch Village Shed

Great news, the Woodchurch Village Shed now has a Shed. It is on site, the first phase of electrics have gone in. We are waiting for a few additional bits to go in before we clad and insulate it. Then second phase electrics can be completed and tested.



We have had a visit from head of Medway Sheds who gave us some good tips. On the 31st August we have a small team coming from Tenterden Shed offering ideas and looking to see what we have done as they are building a new shed too.

On 22nd we have a representative from Axminster Tools coming along to give us some advice on a successful workshop set up and Safety.

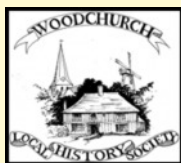
Following that we need to start more fund raising to help us fit a good workshop/ Shed.

We meet on a Thursday morning from 10am to 1 pm, tea/ coffee and biscuits available. Just £3 a session.

woodchurchvillageshed@gmail.com

Woodchurch Local History Society

The Woodchurch Local History Society (WLHS) generally meets on the first Monday of the month in the village Memorial Hall at 7:30pm to hear an invited speaker give his/her talk about a local topic. After our summer break we will meet again on Monday September 1st, 7:30pm to hear Josie Mackie deliver her talk entitled 'The Butcher, the Baker and the Candlestick Maker'. Josie is a founder member of the Woodchurch Ancestry Group and as such is extremely knowledgeable about the history of Woodchurch village. In her illustrated presentation she will talk about the many shops and businesses which Woodchurch hosted over the last 200 to 300 years and tell us where to buy your essential shopping. If you are interested in our village history then please come along - you will be very welcome.



Annual membership of our society presently costs £12 but from September to February (AGM) the half yearly membership fee is only £6. So, if you think you might like to join please come along. Alternatively, if you fancy coming along to just one talk then the visitor fee is £3, paid at the door. There is no need to book - just come along on the night and join us.

Thanks, Geoff [01233 860393](tel:01233860393).



PROMS & SHOW MUSIC

SATURDAY 30 AUGUST

2:00 SHOW MUSIC

7:00 PROMS EVENING

**Flag waving and dressing up
welcome!**

Music for all,
**ABBA, Queen, Shows and the Proms with
Chris & Jo Powell**

*Refreshments available and you are welcome
to bring own alcohol*

**THE JEAN MEALHAM CENTRE,
LOWER ROAD, WOODCHURCH
TN26 3SQ**

Donations on the door **07798566849**

Eleanor Johnson Your Woodchurch Travel Agent



Summer/Winter Sun Holidays City Breaks Ski
Longhaul Holidays Cruise Safari UK Breaks



**NO FEE
SERVICE!**

07772 710 996

eleanor@travologytravel.co.uk
www.travologytravel.co.uk/eleanor

100% Financially protected
ATOL, IATA protected



GET SPRING READY

WITH ERNEST DOE POWER | ASHFORD

Hendon Barn, Woodchurch, Ashford, Kent TN26 3QP
Tel: 01233 224860

ernestdoeshop.com

ernest DOE
POWER



Landscaping in Ashford, Maidstone,
Heathfield and the surrounding area
Paving company covering Kent



For Enquiries:
07793 107246
07528 230530



info@kentbestlandscapers.co.uk



www.kentbestlandscapers.co.uk



Kent's Best Landscapers



Soft and
hard landscaping

Garden and
planting design

Garden patios, paving,
fencing and buildings

Garden and porcelain paving

New driveways

Stables build and
equestrian field fencing

Turfing

Garden irrigation

Outside sound and lighting

Summer houses

Composite and natural decking

You could advertise your company here
from as little as £10 per month

Visit the HUB Web site for more information
[www.woodchurchhub.uk/the-hub/newsletters/parish-
newsletter-advertising/](http://www.woodchurchhub.uk/the-hub/newsletters/parish-newsletter-advertising/)

DK Plastering Services

All plastering work carried out
Fully Insured
Professional Workmanship



For a clean & tidy job call David
07974 891795



WOODCHURCH

SHOP ✨ BAR ✨ WINE TASTING ✨ TOURS

Thursdays to Sundays 11am - 5pm

<http://woodchurchwine.co.uk> tel:01233 860276

To help keep the Newsletter free for the village
please become one of our sponsors, or give a
donation if you can at.

www.woodchurchhub.uk or at The HUB

KENT ✨ ✨ ✨
HOLIDAY COTTAGES

+44 (0) 1233 860 293

info@kentholidaycottages.co.uk

Everything **Outside**

Bringing New Life
To Your Garden

For A Quick Quote From A Company You Can Trust Call

☎ 01580 766 232 ☎ 07795 465 861

Welcome To Everything Outside

We cover a wide range of services to meet the requirements of our ever-growing client list, if you are looking for a company you can trust to provide a high standard of quality work covering

- ✓ Gardening
- ✓ Garden Design
- ✓ Fencing
- ✓ Clearance
- ✓ Landscaping
- ✓ Hedge Cutting
- ✓ Tree Surgery
- ✓ Digger Work

and much more. Then call our experienced team today on 07795 465 861. To view our full range of services, click on the link below.

Our head office is based in Tenterden, Kent and means we are in the perfect location to proudly service Kent and East Sussex. All our services are tailored to each job we carry out and our team are experience in all aspects of fencing and landscaping services making us your number one choice for all work you require.

Great Work

Great Reputation

Great Price

VERNACULAR HOMES

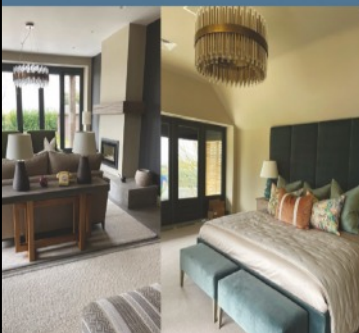
— design & build —



We work with homeowners and developers on new builds, barn conversions, renovations, restorations, remodelling and extensions.

Trust our experienced team to manage every step to bring your ideas or dream home to life.

vernacularhomes.com 01233 861177



Karen Stevens

Massage and Reflexology

Massage and Reflexology from my treatment room in Woodchurch

To book or to discuss your treatment needs call me on:

☎ 07808675251

OUR SPONSORS

fab feet

Professional Foot Healthcare

www.fabfeethealthcare.co.uk

**Delivering high quality Podiatric care in the
comfort of your own home.**

Providing a reliable and friendly service of professional
treatments for all of your foot ailments.

Call Michelle on:

Tel: 01233 731207

Mob: 07766 705824

Registered & Insured



Remedial massage therapy.

Your Local Woodchurch Massage Therapist

- Remedial Massage
- Sports Massage
- Holistic Massage

- Ultrasound Therapy
- Electrotherapy

- Injury Treatments & Rehabilitation
- Rehabilitation Taping/Strapping
- Athletic Taping/Strapping



Bookings - 07799221043

www.musclewhisperer.org.uk

Treatment Room - Little Vale TN26 3QW



musclewhisperer@outlook.com



WOODCHURCH COTTAGE FLOWERS



**AN ARTISAN FLORIST & FLOWER GROWER, WE OFFER
BOUQUETS, FAREWELL ARRANGEMENTS AND
WEDDING FLOWERS.**

**ALL GROWN ON OUR SMALL HOLDING IN
WOODCHURCH. WE WORK WITH NATURE AND THE
SEASONS, NO CHEMICAL OR PESTICIDES USED**

call or text 07960 449235

www.woodchurchcottageflowers.co.uk





ONE AMAZING DAY | 30.08.25 | TWO FUN EVENTS

SUMMER

CRAFT BEER & GIN
EVENING FESTIVAL

FIRST DRINK FREE | LIVE BANDS | DJ
ADULT TICKET £5 | FROM 5 PM UNTIL LATE

RESERVE TICKETS NOW



Summer Festival at The King's Head, Shadoxhurst

The King's Head in association with the Shadoxhurst Community Forum are organising a Summer Festival on Saturday 30th August. It will be a festival of two halves with the family fun starting at 1.00pm, running through to 5.00pm, with activities including a dog show, children's bouncy castle, fancy dress & scarecrow competition, games, music and stalls.

*There are a few spaces left in the stall area, if you, or someone you know would like to run a stall to fundraise, offer a children's activity, promote your local business or sell your handmade crafts, then contact Hannah on **07963 717063** or email hannahcollison@btinternet.com.

The evening festival, from 5.00pm, will be a mix of live bands and a DJ playing until late. The evening is ticketed, and your first drink is free, please drop into the King's Head to purchase tickets for £5 each, or book online at this address:

<https://www.trybooking.com/uk/events/landing/88492>

During the whole day and evening there will be a dedicated outdoor craft beer and gin bar. Food will also be available to purchase and will be a pop-up barbeque / street food style.

For details of all our upcoming events:

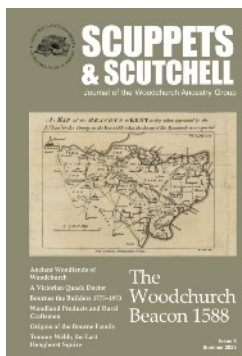
Facebook: [shadoxhurstwhatson](https://www.facebook.com/shadoxhurstwhatson)

Instagram: [shadoxhurst_whatson](https://www.instagram.com/shadoxhurst_whatson)

Scuppets & Scutchell 6

Scuppets & Scutchell 6 (Summer 2025) is the latest issue of the award-winning local history journal for Woodchurch researched, written and produced by members of the Woodchurch Ancestry Group. Our sixth issue has 92 full-colour pages packed, as always, with interesting and well-researched articles about the village, including:

- o The Ancient Woodlands of Woodchurch
- o A Victorian Quack Doctor Comes to Woodchurch
- o Forewarned is Forearmed: The Woodchurch Beacon
- o Bournes the Builders 1775-1973
- o Woodland Products and Rural Craftsmen
- o Eighteenth-Century Origins of the Bourne Family
- o Tommy Webb, the Last Hengherst Squire, and His Sisters



Scuppets & Scutchell is for anyone interested in the history of Woodchurch and keen to discover more about the village's fascinating past.

Copies are just £9.00 each plus postage and are available to buy online at bookshop.woodchurchancestry.org.uk (delivered in eco-friendly, plastic-free cardboard packaging). Scuppets & Scutchell 6 is also available from the Woodchurch Hub and the Woodchurch Village Life Museum.

Afternoon Social



Every Wednesday
2.00 - 4.00 pm

**Jean Mealham Popin Centre,
Lower Road, Woodchurch TN26 3SQ**

All welcome

Tea, coffee, cake & company provided!

FREE Entry & Parking



If you'd like to know more call
01233 860 139 / 07798 566849

ELVIS Rocks Woodchurch

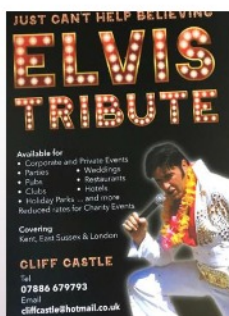
Saturday 20th September 2025

Elvis Tribute (Cliff Castle)

7.00pm - 9.15pm approx

including a 45 minute break for refreshments
(ploughmans supper available for additional £5
must be booked in advance)

Proceeds on behalf of Woodchurch Museum



Tickets: £20 from Woodchurch HUB or
Richard 07798 566849

Venue: The Jean Mealham Centre, Lower Road,
Woodchurch TN26 3SQ

WoodchurchYardTogether("WYT")

Our next social gardening weekend in the
Churchyard is:

9th & 10th
August

woodchurchYardTogether@btinternet.com



WoodchurchYard Together

'The Singing Sippers'
Woodchurch Choir

**Why not come along to our Woodchurch
FUN & 'feel good' Choir!**

**Its FREE, no talent required—
just enthusiasm and a sense of fun!**

**We meet on the first Thursday of the
month, 7.30pm in All Saints Church,
Woodchurch**

WOODCHURCH VILLAGE LIFE MUSEUM

Thank you to all the subscribers to the WVLM
lottery draw. You will see the July winners of
2025 below.

There is still time to be included in the draw and
so if you still wish to subscribe (£10 for the
latter 6 months of the year) please contact
enquiries@woodchurchheritagetrust.uk or Woodchurch HUB
on 01233 861381 - or come in to The HUB.



July 2025 Draw Results

1st prize	£50	Jenny Mills	548
2nd prize	£30	Richard Carley	287
3rd prize	£20	Bill and Chrissie Dines	91

For more information contact us at
enquiries@woodchurchheritagetrust.uk
or phone 01233 860586

or visit our Web site www.woodchurchheritagetrust.uk

Simple Kent Funerals

caring • flexible • imaginative • economical • local
Applefield Cottage, Redbrook Street, Woodchurch TN26 3QS

Call Toby on 07806 613297 (24/7) • www.simplekentfunerals.co.uk

