



# WOODCHURCH COMMUNITY NEWS

*The village community working together*

June 2025

Contact us: Telephone 01233 861381 Email enquiries@woodchurchhub.uk Web www.woodchurchhub.uk

**OVER 1,000 COPIES distributed every month in the Woodchurch area**

## WOODCHURCH Community Calendar



### Weekly events:

#### Saturdays:

**Boot Camp** 9:00am-10:00am on the Village Green  
**Museum Open** 10:00am to 4:00pm

#### Sundays:

**Museum Open** 10:00am to 4:00pm  
**Outpost Church** 10:30am-11:45pm in the S&G Community Centre, Lower Road

**Karate** 10:00am-12:00pm in the Jean Mealham Centre

#### Monday:

**Pilates** 9:00am-10:00am in the Memorial Hall  
**Tai Chi and Qigong** 10:00am and 11:00am at the S&G Community Centre

**Knit and Natter** 2:00pm - 3:30pm in the Jean Mealham Lodge

**Line Dancing** 2:00pm - 4:00pm in the Jean Mealham Centre

**Junior Tennis coaching** Red-3:30pm, Orange 4:30pm, Green/Hand Ball 5:30pm, Hard Ball 6:30pm at the Tennis Club

**Beavers** 6:00pm-7:00pm in the S&G Community Centre

**Group Fitness Strength Training** 6:15pm and 7:15pm in the Memorial Hall

#### Tuesdays:

**Pilates** 9:00am-10:00am, 10:15am-11:15am and 6:00pm-7:00pm in the Memorial Hall

**Coffee Morning** 10:00am-12:00pm in All Saints Church

**Little Leaves Forest Schools** 10:00am-12:00pm under 5s Play Grp

**Puzzle Club** 2:00pm-4:00pm in the Jean Mealham Lodge

**Cubs** 5:30pm-7:00pm in the S&G Community Centre

**Karate** 7:00pm-9:00pm in the Jean Mealham Studio

**Salsa Dance** 7:30pm-8:30pm in the Jean Mealham Centre

**Scouts** 7:30pm-9:00pm in the S&G Community Centre

#### Wednesdays:

**Pilates** 9:00am-10:00am in the Memorial Hall

**Yoga** 10:00am-11:00am in the Memorial Hall

**Museum Volunteers** - maintenance and gardening 9:30am-12:00pm at the Museum

**Social Pop-In** 2:00pm-4:00pm Tea and coffee and boot fair marquee at the Jean Mealham Centre

**Junior Tennis coaching** Red/Orange-4:00pm, Green/Hard Ball-5:00pm the Tennis Club

**Rainbows** 5:00pm-6:00pm in the S&G Community Centre

**Fish and Chips** 4:30pm-7:30pm in the Village Car Park

**Brownies and Guides** 5:45pm-7:15pm in the S&G Community Centre

#### Thursdays:

**Art Society** 10:00am-1:00pm in the Memorial Hall

**Margaret Morris Movement** 2:15pm-3:45pm in the S&G Community Centre, Lower Road

**Group Fitness Interval Training** 6:00pm-7:00pm in the Memorial Hall

**Badminton** 7:00pm-11:00pm in the Memorial Hall

**Karate** 7:00pm-9:00pm in the Jean Mealham Centre

Previous editions of the Newsletter can be found on The HUB Web site [www.woodchurchhub.UK](http://www.woodchurchhub.UK)

#### Fridays:

**Zumba with Hannah** 9:30am in the Memorial Hall

**Little Leaves Forest Schools** 10:00am-12:00pm under 5s Play Grp

**Squirrels** 5:30pm-6:30pm in the S&G Community Centre

**Adult Tennis coaching** 5:30pm at the Tennis Club

#### Other Events:

Sun 1<sup>st</sup> **All Age Service with Baptism** - 11:00am at All Saints Church

Mon 2<sup>nd</sup> **PC Laker Surgery** - 10:00am to 11:00am in The HUB

**WLHS "The Wreck Hunter"** - 7:30 in the Memorial Hall

Tue 3<sup>rd</sup> **Evening Prayer** - 4:00pm at All Saints Church

**Cottage Flowers evening tour** - 6:30pm at Woodchurch Cottage Flowers

Thu 5<sup>th</sup> **Social Prescribers** - 1:00pm to 4:00pm in The HUB

**Singing Sippers Choir** - 7:00pm at All Saints

**Yoga on the Green (FOWSA)** - 7:00pm

Sun 8<sup>th</sup> **Parish Eucharist** - 11:00am at All Saints Church

**Mad Hatters Tea Party** - 2:00pm to 4:00pm at Woodchurch Museum

Mon 9<sup>th</sup> **PPG Meeting** - 6:00pm in the Memorial Hall Annexe

Tue 10<sup>th</sup> **Evening Prayer** - 4:00pm at All Saints Church

**Woodchurch WI Open Meeting "Concord"** - 7:30pm in the Memorial Hall

Wed 11<sup>th</sup> **Borough Councillor Surgery** - 11:00am to 12:00pm in The HUB

Thu 12<sup>th</sup> **Citizens Advice** - 1:00pm to 3:00pm in The HUB

Sat 14<sup>th</sup> and Sun 15<sup>th</sup> **WYT Weekend** at All Saints Church

**Drumming Workshop** - 2:00pm to 3:00pm at the Jean Mealham Centre

Sun 15<sup>th</sup> **Morning Worship** - 11:00am at All Saints Church

**Evensong** - 6:00pm at All Saints Church

Tue 17<sup>th</sup> **Evening Prayer** - 4:00pm at All Saints Church

Wed 18<sup>th</sup> **Woodchurch Players AGM** - 7:00pm in the Memorial Hall

Sat 21<sup>st</sup> and Sun 22<sup>nd</sup> **Wealden Literary Festival** - at Boldshaves Gardens

Sun 22<sup>nd</sup> **BCP Holy Communion** - 8:00am at All Saints Church

**Sunday Saints** - 3:00pm at All Saints Church

Tue 24<sup>th</sup> **Evening Prayer** - 4:00pm at All Saints Church

Thu 26<sup>th</sup> **Neighbourhood Watch Surgery** - 1:00pm to 3:00pm in The HUB

**Parish Council Meeting** - 7:00pm in the Memorial Hall Annexe

Sat 28<sup>th</sup> **Wades BBQ** - 12:00pm to 3:00pm at Woodchurch Museum

Sun 29<sup>th</sup> **Woodchurch Kids Run Club** - 9:30am on the Village Green

**Group Eucharist** - 11:00am at All Saints Church

Mon 30<sup>th</sup> **Hug in a Mug** - 10:45 in the Old Post Office Coffee Shop

## WOODCHURCH SURGERY UPDATE

The main news this month from the Surgery is that we have another retirement. We have such a lovely team here that it seems more often that people leave because they are retiring rather than have had enough, which is a credit to the Village. Dr Clare Smith came here on a whim with her husband, Simon, as they really loved the area. Their three children all went to Woodchurch Primary while she worked at Hamstreet, until she was lured to Woodchurch and has spent the best part of 20 years as a GP here. She has been a great member of the team and has an amazing knowledge of all manner of things but specialises in Women's Health. We will miss her greatly as she retires at the end of June, although she has made herself available to help out occasionally if she isn't travelling the globe. If you get the chance, please wish her well in her deserved retirement.



With this loss we have to celebrate a change in personnel. We had some really strong applicants for her replacement and some serious thinking to do. When Clare dropped her Monday sessions we have been delighted to have Dr Faye Hinsley join us for a regular Monday and bring her experience to the Surgery. Unfortunately, Faye has a really serious role with the Integrated Care Board (health authority) trying to improve children's services in the region and cannot commit to extra sessions so will be stopping the regular Mondays. We were blown over by the enthusiasm and quality of Dr Baniqul Ahmed who qualified at St Georges in London and has been working in and around Kent for the last 10 years or so. She will be joining us for two days a week at the end of June. We have another member joining in August but that's for next time...



June Celebrates a week of Men's health - to highlight this we will be inviting at risk men for some prostate checks. The aim will be to write to black men over 45 years old and get a prostate specific

antigen (PSA) blood test done and also invite them for an examination of the prostate. We appreciate that this is a bit more intrusive, so that bit is optional. Other at-risk groups are obese men and men with a family history of prostate cancer - please feel free to book in the test if you are part of that group, or just curious. I have had two friends recently diagnosed age 48 with cancer of the prostate and both seem fortunate to have had curative surgery. Neither had any symptoms but both had a family history of it.

We also celebrate national Diabetes week, highlighting the importance of early diagnosis. When I was at medical school in the late 1990s, we were taught that a diabetic's life expectancy was reduced by a third and that they would likely be seriously sight impaired, impotent, have heart attacks, strokes and lose a limb from diabetic complications. Now we are much more aggressive and consider it not just a "sugar disease" but a disease of microvascular control. By having

better education and medication, both doctors and patients can treat the disease and make it something to live with rather than to die from.

Symptoms can be excessive thirst, abdominal pain and weight loss, but these are really late signs, if you have never had a blood sugar blood test it might be worth booking in for one. If we know that the blood sugar control is not so good, it is better to intervene early to prevent the circulatory disorders.

I look forward to the changes and hope the opportunity to build new relationships is positive and that the usual Woodchurch welcome will be in full force.

On behalf of the Surgery, I wish you a very happy June - already! Best wishes, Dr Jack Hickey - GP

**DIABETES WEEK**

9-15 June 2025

### Surgery Opening Hours

Monday to Friday 9am to 5pm



**Hamstreet  
Dental Clinic**

Welcomes You



### Where to find us...

Hamstreet Dental Clinic  
Warehorne Road  
Hamstreet  
Kent TN26 2JJ

Find us on facebook



**Tel: 01233 733848**

Email: hamstreetdentalclinic@gmail.com

**WOODCHURCH  
HUB**  
COMMUNITY INFORMATION CENTRE

### Woodchurch Players

Dates for your diary:

o Wednesday 18 June Players Society AGM, Woodchurch memorial hall. Starts at 7pm. Free. All very welcome!

o 23-25, 30 & 31 January 2026 Pantomime, actual Pantomime tbc.





The HUB is pleased to welcome PC Darren Laker (our local community police officer). PC Laker will be holding regular monthly surgeries at the HUB towards the beginning of each month - the exact times will be dependant on shifts. This month he will be available to answer your questions on the 2<sup>nd</sup> of June from 10-11am. These sessions are open to all residents living in Rural South Ward (includes Woodchurch).

### SURGERIES AT THE HUB

Each month the following organisations hold public, free, surgeries in Woodchurch HUB where you can come along and discuss any questions that you may have directly with them.

#### Kent Police



PC Darren Laker will be available to answer your community policing questions from 10am to 11am at the beginning of each month. The precise timing will depend on his shifts but details will be included each month in the calendar on the front page of the Newsletter.

#### Social Prescribers



The Social Prescribers hold confidential consultation clinics on the 1<sup>st</sup> Thursday of each month from 1pm to 4pm.

#### Ward Councillor for Weald South



Cllr David Ledger holds monthly "Meet your Councillor" surgeries on the 2<sup>nd</sup> Wednesday of each month from 11:00am to 12:00pm

#### Ashford Citizens Advice



Ashford Citizens Advice holds confidential consultation clinics on the 2<sup>nd</sup> Thursday of each month from 1pm to 3pm.

#### Neighbourhood Watch



Peter New from COMMUNITY NEIGHBOURHOOD WATCH holds monthly surgeries on the 4<sup>th</sup> Thursday of each month from 1:00pm to 3:00pm

In May we held events to mark Victory in Europe Day 80, possibly the last significant national event to mark the end of WW2 in Europe. A lunch was provided in the Memorial Hall for Woodchurch members of the wartime generation and a sunset ceremony with the lighting of the beacon.

I would like to thank all those who attended for helping make the day a success, those who paid for the day with generous donations of money or provisions and make special mention of The Art Society who vacated their booking for us. Others made tea, washed up and Richard Carley provided entertainment, a big thank you all round.

WW2 continued until 15th August 1945, our forces in the East fought there to the very end and we must not forget them. Our group will look at ways to mark that date too, more in next month's newsletter.

Don Grant

This month's WI meeting was in two parts. Firstly we needed to discuss, and then vote on this year's resolution before settling down to hear John Black talking about Anxiety.

Every year the National Federation of Women's Institutes puts a Resolution forward to Government for consideration. This year "Bystanders can be Lifesavers" has been elected for consideration. Its focus is on asking the Government to improve public awareness plus knowledge of the use of defibrillators and CPR in relation to what a bystander can do in the case of an out of hospital cardiac arrest. Woodchurch is fortunate to have five defibrillators but would you know where they are and how to use one in the case of an emergency?

John Black was an Assistant Head Teacher in charge of student safe guarding before becoming a counsellor. He discussed the various parts of the brain, including the pre-frontal cortex, whereby we can access good or happy memories and positive thinking rather than feeding the primitive part of the brain with negativity. This is where the "flight or fight" feelings set in, and start to cause anxiety. Positive thinking and interaction, he suggested, are the best ways to relieve stress and anxiety.

The competition calling for items synonymous with Essex was a close run thing. Photos of relatives from Essex, a plate depicting Southend Pier, traditional spice cakes and a report of a historic broadcast by Dame Nellie Melba were all worthy winners.



You are cordially invited to our Open Meeting on Tuesday 10<sup>th</sup> June at 7.15 pm (donations invited as entrance fee), when aviation historian, Guy Bartlett will be talking about Concorde. Gentlemen will be most welcome. We look forward to seeing you then.

For further information please find our website at [Woodchurchwi.weebly.com](http://Woodchurchwi.weebly.com) or our Facebook page at [www.facebook.com/WoodchurchWomensInstituteEastKent](https://www.facebook.com/WoodchurchWomensInstituteEastKent)

### Woodchurch Remembers VE Day 80





## FROM PETER NEW NEIGHBOURHOOD WATCH



I hope you had a good May Bank Holiday and now we start to move towards the summer and the crime prevention I need to be considering.

Thefts from cars, vans, sheds, garages, barns, stables, outbuildings alongside warnings of bogus callers and rogue traders. Internet shopping parcel thefts remain a constant crime trend especially as delivery vehicles are followed.

I would like to share with readers the other side of my work which all links into my overall strategy for keeping Woodchurch safe.

- 1 Continued update to your council, who are incredibly supportive.
- 2 Alerts into the community as required. Facebook groups for general matters emails to residents if urgent.
3. Attending my surgeries at the WOODCHURCH HUB.
- 4 Writing into the Woodchurch newsletter.
- 5 Continuing to grow NHW membership.

Another important part of the overall strategy is communication and working relationships with key other players. I have met and set up working relationships with both MPs that cover the Ashford District. Katie Lam and Sojan Joseph. Both MPs

are completely committed to working with me for the benefit of everyone in the community.

Next is to ensure that following the

KCC elections that the Councillor for the respective areas I cover I have a strong working relationship going forwards.

Woodchurch is part of Ashford Rural South and councillor Bill Bartlett is someone I have known and worked with for many years in other areas as a Borough Councillor. It will also be Important to build working relationships with new KCC Councillors that border your area as Kent faces a busy couple of years. I am a lone voice now because I feel devolution could be measured in weeks away rather than the 2 years I regularly hear mentioned. A void of uncertainty is a gap criminals will drive through.

High on my list is to take intelligence and information and anticipate risks. They may not be in Woodchurch today, but could they be "clouds on the horizon". An example would be information that rural car parks are used for drug drops/handover/deals.

This risks the health of misguided persons in the village and may bring the type of unwanted person or criminal into the



area. Drug dealers attract other drug dealers, and those persons CAN and MAY bring a level of violence into an area too.

Other matters I am working on is rural crime especially animals/horses and the ongoing plague of catapults which has seen me secure almost 25000 signatures.

### HORSE SAFETY ON ROADS

These recent campaigns have also appeared on both national and local TV.



As always thank you all for your support and backing.

I look forward towards the summer crime prevention I will run, and then the rest of a busy 2025. **PLEASE JOIN WOODCHURCH NEIGHBOURHOOD. EMAIL BELOW**  
Thank you, Peter

Peter New ([peternew1@aol.com](mailto:peternew1@aol.com)) and 07768437422.  
Community Neighbourhood Watch

## WoodchurchYardTogether("WYT")

Our next social gardening weekend in the  
Churchyard is:

14<sup>th</sup> & 15<sup>th</sup>  
June







**Parish Council Website:** [www.woodchurch-pc.gov.uk](http://www.woodchurch-pc.gov.uk)  
**The next Parish Council Meeting is on Thursday 26<sup>th</sup> June  
 at 7pm in the Memorial Hall Annexe**



The Parish Council unanimously agreed to re-elect Councillor Lucy Quinn as your Chair of the Council for 2025-2026.

At the same time we would like to welcome Wendy Swift and Chris Carter as the two new Parish Councillors. It was agreed for both to be co-opted on the Council as of the 29th May Meeting.

### **Bus Stops**

The Parish Council is working hard to resolve discrepancies at Kent County Council over the location of the new bus stops along Front Road. The plans that KCC supplied to The Parish Council differ to those that KCC sent to those of the contractor!

In addition, we are waiting on a response from KCC as to why the bus shelter at Brattle, which is the property of the Parish Council, was demolished without neither informing us nor obtaining our consent.

Neither of these circumstances are acceptable and have been raised with the new County Councillor Bill Barrett.



### **Parish Council Finances**

It has been a very busy time since the April Meeting.

**Internal Audit.** Mulberry conducted their internal audit on the Parish Council on Tuesday 29<sup>th</sup> April, only noting that there were some Annual Governance and Accountability Returns (AGAR) missing for 2018-2019 and 2019-2020 on the Parish Council website. The Parish Manager has now rectified this. The full report is available to view on the Parish Council website.

**External Audit.** At the 29<sup>th</sup> May meeting, the Parish Council agreed to the 2024-2025 AGAR for submission to the external auditor. The accounts will be open to the public for full inspection from 3<sup>rd</sup> of June until 14<sup>th</sup> July 2025.

We have received the first 50% instalment of the precept from Ashford Borough Council, this left the Parish Council with around £72,000 banked at the end of April. Since then HMRC have refunded £6,900 of VAT for 2024-2025, and the Council approved payments totalling £10,760 for May. In addition it was agreed to make a donation of £916 to the Village Green Charity to cover their insurance renewal. This will leave around £67,000 in the bank at the end of May.

### **The Annual Parish Meeting**

With diaries being so full, the decision has been made to defer Your Annual Parish Assembly to later in the year. Details will be made available in due course.

### **Bird and Bat Boxes**

Village Sheds have completed the first batch of bird and bat boxes which are extremely well built and designed to conform with RSPB requirements. As the Parish Council has limited land and trees where they can be placed, we will be offering them to local community organisations who have suitable sites for them to be put. If you have any suggestions then please contact the Parish Manager. We will be making some available to buy in due course.

### **Planning Applications Considered Over The Last Two Months**

Application	Location	Parish Council	Ashford Planning
PA/2024/2379	Stonebridgelands, Front Road	Support	Grant Consent
PA/2024/2281	Clappers Mead, Bethersden Road	Support	Waiting Decision
OTH/2025/0184	Land between, 82-120 Front Road	Unable to comment until traffic measures resolved	Waiting Decision
PA/2025/0682	12, Kirkwood Avenue	Support	Waiting Decision
PA/2025/0581	Mill Cottage, Bethersden Road	Support	Refused
PA/2025/0536	Maidenwood Farm, Haycross Lane	Object on the grounds it doesn't appear to comply with HOU5	Waiting Decision
PA/2025/0478	Berridge Farm, Brook Street	Support	Waiting Decision
PA/2025/0688	Cob Tree Meadow, Brook Street	Support Subject to Water Availability	Waiting Decision
OTH/2025/0908	37 The Green	Submitting comments to ABC outlining concerns	Waiting Decision
NOT/2025/0938	Land South of Maywood Farmhouse, Frog Hole Lane	Support, subject to clarification of associated operational development	Waiting Decision
NOT/2025/0943	Balcony Farm, Cuckoo Pit Lane	Support, subject to access and clarification of associated operational development	Waiting Decision

### **How to contact your Parish Council**

**In person:** By talking to one of your councillors - details on the Parish Council Web site

**By email:** [clerk@woodchurch-pc.gov.uk](mailto:clerk@woodchurch-pc.gov.uk)

**By phone:** 01233 861381

**Through The HUB:** Place your correspondence in a sealed envelope marked "Parish Council" and deliver to The HUB

**By post to:** Woodchurch Parish Manager, c/o The HUB, Front Road, Woodchurch, Kent, TN26 2PA

**Through the contact form on the Parish Council Web site:** [www.woodchurch-pc.gov.uk/contact-us/](http://www.woodchurch-pc.gov.uk/contact-us/)

# All Saints Church



Dear Woodchurch Friends

'Therefore encourage one another and build up each other, as indeed you are doing.' (1 Thessalonians 5:11)



It is a year since Graham and I moved to Denswood Parish. Thank you! Thank you for welcoming us both so warmly to the Parish. Thank you for encouraging me and building me up.

On the 29<sup>th</sup> June we celebrate the apostles Saint Peter and Saint Paul. Paul who turned from persecuting early believers of The Way, to choosing to follow and teach Jesus Christ's Way through actions and words. Peter who was impulsive, made mistakes, denied knowing Jesus and at the same time recognised Jesus as the Son of God. 'Pentecost' is a traditional time of the year for ordinations. We are reminded to serve God and to serve God's creation and people, just as the first followers of Jesus Christ did. We are also reminded that just like Peter and Paul, The Way of a Christian life is not always easy. But the reward is fulfilment, wholeness and deep joy. On the 28<sup>th</sup> June I will be ordained Priest. I will join Revd Sue and Revd Mike in serving you and God at marriages, blessings and healing.

For the past year I have been serving you and God as Deacon. To be a deacon means to serve. Although I will now be a priest, I will always be a deacon. I am still a servant. The day I forget I am a servant and stop serving you or stop serving God, please tell me! Remind me I am your priest, but I am also your servant.

To continue the 'thank you's': the first week of June is National Volunteers Week. Thank you to all our unpaid workers in the Parish who give so generously of your time, talents and resources to work in our communities. Your unpaid work is of equal value to paid work. You make Denswood Parish a more caring and enjoyable place to live.

As you read this month's magazine, please look out for details of our services on Refugee Sunday on the 15<sup>th</sup> June. Also, our second informal worship service on the 22<sup>nd</sup> June at 3pm in All Saints, Woodchurch.

I look forward to continuing to serve alongside you. And once again, thank you for all you do for me.

thanks, peace and prayers  
Maria



**There will be no CARM meeting this month**  
(originally scheduled for the 2<sup>nd</sup> June)

## Woodchurch Local History Society



Our next society meeting is on Monday June 2<sup>nd</sup>, 7:30pm in the village Memorial Hall when we will have an illustrated talk by local author and speaker, Melody Foreman. Her talk is entitled 'The Wreck Hunter - Battle of Britain, Heroes, Lost and Found'. She will tell the story of Terry Parsons. Terry was a young man in 1961 when he began his long search for lost aircraft and memories of the Battle of Britain and the Blitz. This talk takes us further than the recovery of wrecks and explores the life stories of a number of brave airmen. One story, for instance, tells of two Belgian sisters who were in their 60's before learning of how their father died over east Kent in 1940.



Incidentally, Melody Foreman's grandfather, Ernest, was the last blacksmith in Woodchurch.

Visitors are always welcome to come to our talks - there is no need to book. Just turn up at the door - however, to help cover our costs we ask for £3 at the door.

Society membership costs £12 annually - come and give us a try if you think you might like to join us.

After this talk we take a summer break and return on Monday September 1st - we have our local Woodchurch history specialist, Josie Mackie, talk of 'The Butcher, the Baker, the Candlestick Maker'. She will take us around Woodchurch to show us where we could shop over the last 300 years.

We look forward to seeing you on June 2<sup>nd</sup>. Thanks, Geoff  
[01233 860393](tel:01233860393).

## Woodchurch Village Shed

Woodchurch is now 90% up and running. The Shed is taking shape, we are now in the position to make a start on our first commission.



We have a mixed group with lots of skills and as a group are happy to share them.

The warm weather is here, if you want to come and learn or share your skills you are welcome. (Over 18 please). The good news is that if you want to come and shoot the breeze, have a hot drink you are still more than welcome.

We meet on a Thursday from 10 am to 1 pm. Each session is just £3.00. This primarily to fund the annual insurance and invest in new, more up to date equipment. We are operating as a non profit organisation for the benefit of the Village and the villagers.

If you want to come please let me know at:  
[neilmckay0730@gmail.com](mailto:neilmckay0730@gmail.com)



## Evening Tour around the Cutting Garden



Woodchurch  
Cottage  
Flowers

Come and join us on a delightful evening stroll and tour around our flower farm and see flowers especially grown for cutting. Enjoy an hour looking and learning how our flower farm works.

An evening stroll will be held on the first Tuesday of the month.

It is advisable to book. However, you can just turn up on the day. Come to as many dates as you like and see how the flowers change throughout the season!

Tours will be made available on weekends and other dates if there is enough interest.

Cost: £10 per person Time: 6.30-7.30pm

### Address:

Brook Farmhouse, Woodchurch,  
TN26 3SP

### Contact:

07960449235

[www.woodchurchcottageflowers.co.uk](http://www.woodchurchcottageflowers.co.uk)

### Dates:

Tuesday 6th May 2025

Tuesday 3rd June 2025

Tuesday 1st July 2025

Tuesday 5th August 2025

Tuesday 2nd September 2025

## Woodchurch Patients Participation Group (PPG)

Our next PPG meeting is Monday 9th June and our Speaker will be:

Clara Hebblethwaite, from The Dementia Experience.

Memorial Hall Annexe starting 6pm -  
All Woodchurch Surgery Patients welcome!



## WOODCHURCH PATIENT PARTICIPATION GROUP

MONDAY 9TH JUNE, 2025 AT 6PM

Clara Hebblethwaite from local Community Interest Group, The Dementia Experience, will be presenting to us on an all things dementia.

She will unravel the ideas behind the Person-Centered Approach & how family members of those with dementia can find nuggets of hope & joy within the distress of it all.



19th July  
2025

Begins 12pm  
Midday

2:15pm  
Presentation

Continuing  
138 years of  
our Village heritage

On the Green with show exhibits in the Memorial hall.  
A day of fun for all ages!

- Vintage tea & cake
- Food & craft stalls
- Farmers Market
- Picnic area

For the kids

- Kids fun zone
- traditional games
- SCARE CROW Exhibition

Visit our website  
[www.woodchurchinbloom.com](http://www.woodchurchinbloom.com)

WOODCHURCH IN BLOOM  
WOODCHURCH GARDENING SOCIETY

Entry forms available from Woodchurch HUB or  
[www.woodchurchinbloom.com](http://www.woodchurchinbloom.com)

If your Woodchurch group/club/organisation would like a stall, please contact us at  
[woodchurchinbloom@hotmail.com](mailto:woodchurchinbloom@hotmail.com)

Shadoxhurst Community Forum Presents

COCKNEY  
SING-A-LONG

FRIDAY 6 JUNE 2025, 7PM  
SHADOXHURST VILLAGE HALL

£10 per ticket  
Bring your own drinks and nibbles

Come and join Mr Tom Carradine on his Ol' Joanna for a good old-fashioned knees-up! Performing songs from across the decades including Music-Hall Era, World War I & II, West End Stage and more.

To book individual tickets or for tables of up to 8 please email  
[sam.taig72@gmail.com](mailto:sam.taig72@gmail.com) or call 07799 634301

FB: Shadoxhurstwhatson  
Insta: Shadoxhurst\_whatson

Made with PosterMyWall.com

**Help needed!**

**Have fun and help make our lovely village events brilliant!**

Whilst we're busy preparing for the Flower & Produce Show on 19<sup>th</sup> July 2025 and dare we say, soon after, starting to put plans together for the Christmas Tree 'switch-on', on the Green on 29<sup>th</sup> November, we have a few asks that we hope you could help us with to support us along the way....

**Flower & Produce Show – 19th July 2025**

- Would you be happy to make a cake for us?
- Would you like to be a Judges helper or help register entries on the door?
- Would you be able to help us with the set up or clearing up after the event?

**Christmas Tree 'switch-on' – 29<sup>th</sup> November 2025**

- Having been so fortunate to be given a 'Christmas Tree' from Villagers (Richard & Sarah George and then the late Bob Turk) for the last 4 years, we are now seeking a Christmas tree for the Green this year, ready for the 'switch-on' on 29<sup>th</sup> November. We wondered if anyone else in the Village had a suitable tree that they would be willing to donate?

**Other areas:**

- We are looking for a Treasurer to join our enthusiastic WIB committee. We meet approx. 6 times a year, on a day and time that suits everyone involved.
- Could you help us by looking after one of the Village Planters/planted areas?

If you are interested in any of the above or would like to help, please contact Philippa via [philippaatwoodchurch@btinternet.com](mailto:philippaatwoodchurch@btinternet.com) or 07774 608281

Thank you



# Hug in a Mug

For those who have family members with dementia

Monday 30th June

10.00-11.30am

Old Post Office  
Coffee Shop  
Woodchurch  
TN26 3PA

FREE tea, coffee &  
delicious cake



Get in touch  
[clara@dementia-experience.com](mailto:clara@dementia-experience.com)

Find out more  
[dementia-experience.com](http://dementia-experience.com)



## Six Bells Park Residents' Association

Six Bells Residents' Association has arranged a talk by Neil Butcher who is the Safeguarding Officer at Trading Standards Kent County Council. This talk will take place at The Jean Mealham Centre on Saturday 28<sup>th</sup> June 2025 commencing at 2p.m.

You are cordially invited to attend this talk but numbers will be needed. Therefore, if you are intending to attend, please let the Hub know, leaving your name and contact number in case of any changes.

The talk will be followed by the Six Bells Park Residents' Association AGM which is a closed meeting.

Dear Friends, Last Spring, All Saints set up a group called 'When we were Young'. This group was intended to help with memory loss. Something we all suffer from as we get older.



We would now like to extend this group to people who find themselves alone, isolated, bereaved or just in need of company now and again. An opportunity to share with like-minded people in a safe and confidential environment.

We will be meeting in the cabin on the Guide and Scout site in Lower Road, Woodchurch once a fortnight starting on Friday 15<sup>th</sup> August from 10:30 to 12:30. Our aim is to provide an atmosphere of friendship and peace a chance to chat with one another over light refreshments.

If you are interested in joining, please let Rev Sue on [01233 820266](tel:01233820266) or Ann on [07754949111](tel:07754949111).

Future Dates are as follows but are subject to change.

15.8.25, 29.8.25, 12.9.25, 26.9.25, 10.10.25, 24.10.25  
7.11.25, 21.11.25, 5.12.25 and 19.12.25



We are excited to announce that our Woodchurch fun Choir will meet once a month, 7pm in All Saints Church

Its free, no talent required—just enthusiasm & a sense of fun!

Calling ourselves the 'Singing Sippers' as we hope to enjoy a sociable drink after singing our hearts out (mostly in tune!)

We plan to meet on the first Thursday of the month beginning the 5th June.

We also plan to sing at Village events!

Why not come along to our free, fun, feel good & 'just enthusiasm required' Woodchurch Choir!

## WADE'S SUMMER BARBECUE

Saturday 28<sup>th</sup> June, 12pm - 3pm  
Woodchurch Museum



Tickets £7.50 - On sale at The HUB  
and at the MUSEUM  
Includes food and soft drinks  
(bring your own alcohol)

Also enjoy our great museum

Suitable for Carnivores, Omnivores and Vegetarians  
All proceeds in aid of Woodchurch Village Life Museum

## Mad Hatters Tea Party

Sunday 8<sup>th</sup> June - 2pm - 4pm

Woodchurch Museum, Susan's Hill TN26 3RE

- White Rabbit trail around the museum and grounds
- Make a hat-or bring your own
- Delicious afternoon tea

Tickets on sale at the HUB  
and at the Museum

BOOK NOW

£7.50 adults / £5.00 children (under 11)

All proceeds in aid of Woodchurch Village Life Museum





## Eleanor Johnson Your Woodchurch Travel Agent



Summer/Winter Sun Holidays City Breaks Ski  
Longhaul Holidays Cruise Safari UK Breaks



**NO FEE  
SERVICE!**

07772 710 996

eleanor@travologytravel.co.uk  
www.travologytravel.co.uk/eleanor

100% Financially protected  
ATOL, IATA protected



## GET SPRING READY

WITH ERNEST DOE POWER | ASHFORD

Hendon Barn, Woodchurch, Ashford, Kent TN26 3QP  
Tel: 01233 224860

ernestdoeshop.com

**ernest DOE**  
POWER



**KENT'S BEST  
LANDSCAPERS**  
Landscaping in Ashford, Maidstone,  
Heathfield and the surrounding area  
Paving company covering Kent



For Enquiries:  
07793 107246  
07528 230530



info@kentbestlandscapers.co.uk



www.kentbestlandscapers.co.uk



Kent's Best Landscapers



Soft and  
hard landscaping

Garden and  
planting design

Garden patios, paving,  
fencing and buildings

Garden and porcelain paving

New driveways

Stables build and  
equestrian field fencing

Turfing

Garden irrigation

Outside sound and lighting

Summer houses

Composite and natural decking



Architect with > 25 years of experience

M: 07967 817 327

www.benhebarchitecture.co.uk



ARCHITECTURE  
PLANNING APPS.  
BUILDING REGS.  
CONSTRUCTION

## Volunteers' Week 2<sup>nd</sup> - 8<sup>th</sup> June 2025

If you can spare a little time each week or month to  
volunteer within the village, please contact the HUB.

We can help put you in contact  
with local groups that could  
need your help.

**Make A Difference**



Email: [enquiries@woodchurchhub.uk](mailto:enquiries@woodchurchhub.uk)

## Treasurer Wanted - Woodchurch Memorial Hall

After many years in the role, the current treasurer has decided that it is time to retire. He has let us know that he intends to pack away his trusty abacus after the next AGM (April 2026). The Memorial Hall is therefore looking for a new treasurer, initially to work with him and the committee over the next few months before taking over the roll.

If you would like to be part of the friendly, dynamic team that manages an important village resource, please email [secretary.wmhall@gmail.com](mailto:secretary.wmhall@gmail.com) for more information - or leave your details at The HUB and we will contact you.





Everything **Outside**

Bringing New Life  
To Your Garden

For A Quick Quote From A Company You Can Trust Call

☎ 01580 766 232 ☎ 07795 465 861

## Welcome To Everything Outside

We cover a wide range of services to meet the requirements of our ever-growing client list, if you are looking for a company you can trust to provide a high standard of quality work covering

- ✓ Gardening
- ✓ Garden Design
- ✓ Fencing
- ✓ Clearance
- ✓ Landscaping
- ✓ Hedge Cutting
- ✓ Tree Surgery
- ✓ Digger Work

and much more. Then call our experienced team today on 07795 465 861. To view our full range of services, click on the link below.

Our head office is based in Tenterden, Kent and means we are in the perfect location to proudly service Kent and East Sussex. All our services are tailored to each job we carry out and our team are experience in all aspects of fencing and landscaping services making us your number one choice for all work you require.

**Great Work**

**Great Reputation**

**Great Price**

## VERNACULAR HOMES

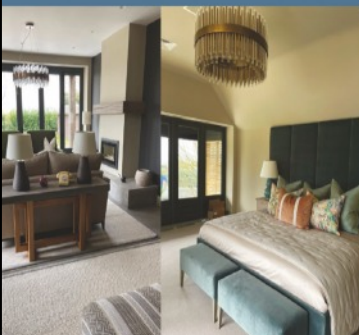
— design & build —



We work with homeowners and developers on new builds, barn conversions, renovations, restorations, remodelling and extensions.

Trust our experienced team to manage every step to bring your ideas or dream home to life.

[vernacularhomes.com](http://vernacularhomes.com) 01233 861177



## Karen Stevens

Massage and Reflexology

Massage and Reflexology from my treatment room in Woodchurch

To book or to discuss your treatment needs call me on:

☎ 07808675251

## OUR SPONSORS

# fab feet

Professional Foot Healthcare

[www.fabfeethealthcare.co.uk](http://www.fabfeethealthcare.co.uk)

**Delivering high quality Podiatric care in the  
comfort of your own home.**

Providing a reliable and friendly service of professional  
treatments for all of your foot ailments.

Call Michelle on:

**Tel: 01233 731207**

**Mob: 07766 705824**

Registered & Insured



*Remedial massage therapy.*

**Your Local Woodchurch Massage Therapist**

- Remedial Massage
- Sports Massage
- Holistic Massage

- Ultrasound Therapy
- Electrotherapy

- Injury Treatments & Rehabilitation
- Rehabilitation Taping/Strapping
- Athletic Taping/Strapping



**Bookings - 07799221043**

[www.musclewhisperer.org.uk](http://www.musclewhisperer.org.uk)

**Treatment Room - Little Vale TN26 3QW**



[musclewhisperer@outlook.com](mailto:musclewhisperer@outlook.com)



## WOODCHURCH COTTAGE FLOWERS



**AN ARTISAN FLORIST & FLOWER GROWER, WE OFFER  
BOUQUETS, FAREWELL ARRANGEMENTS AND  
WEDDING FLOWERS.**

**ALL GROWN ON OUR SMALL HOLDING IN  
WOODCHURCH. WE WORK WITH NATURE AND THE  
SEASONS, NO CHEMICAL OR PESTICIDES USED**

call or text 07960 449235

[www.woodchurchcottageflowers.co.uk](http://www.woodchurchcottageflowers.co.uk)





Weekly-  
Every Wednesday 10:00

Annexe Hall  
Woodchurch  
Kent  
TN26 3PB

# Yoga

Beginner Friendly  
Everyone Welcome



mindfulmeadowyoga.co.uk  
mindfulmeadow@yahoo.com

Drop in £10  
Preregister £8



## WOODCHURCH

SHOP ✿ BAR ✿ WINE TASTING ✿ TOURS

Thursdays to Sundays 11am - 5pm

<http://woodchurchwine.co.uk> tel:01233 860276

## KENT HOLIDAY COTTAGES

+44 (0) 1233 860 293

✉ [info@kentholidaycottages.co.uk](mailto:info@kentholidaycottages.co.uk)

### DK Plastering Services

All plastering work carried out  
Fully Insured  
Professional Workmanship



For a clean & tidy job call David  
07974 891795  
[dk.plastering@hotmail.c.uk](mailto:dk.plastering@hotmail.c.uk)



Cranbrook Fishmongers are now doing  
home deliveries in Woodchurch

**EVERY FRIDAY & SATURDAY**

Please call for more information

## FRESH FISH

Jim: 07866 741288

## An evening with ... ABBA Chique

**Sunday 10th August 7.30 pm**

The hottest tribute to ABBA



**Tickets £20**  
available at  
Woodchurch HUB,  
Carley Butchers  
or call  
07798 566849

Tea, coffee &  
food will be  
available to  
purchase.  
You are welcome  
to supply own  
alcohol

**Dress to impress!**

**The Jean Mealham Centre,  
Woodchurch TN26 3SQ**



### The SEND Consultancy Group

EHCP | Appeal | Tribunal

Experienced and IPSEA-qualified  
SEND Law consultant, providing  
independent professional guidance  
and specialised support

#### OUR SERVICES:

- Advice Appointments
- EHCNA parental requests
- EHCP Review & Draft Checks
- Annual Reviews
- Appeal & Mediation Support
- Mediation
- Tribunal Support & Representation
- And other bespoke services

**Contact Us: 0333 772 3845**

[info@thesendconsultancygroup.co.uk](mailto:info@thesendconsultancygroup.co.uk)

[thesendconsultancygroup.co.uk](http://thesendconsultancygroup.co.uk)



# WOODCHURCH CARNIVAL

## One year until Carnival 2026 - win ride tickets!

It's already June and that means it is a year until the next Woodchurch Carnival on 6<sup>th</sup> June 2026! To get you in the mood, we have some exciting announcements...

On 6<sup>th</sup> June this year, exactly one year before Carnival, we launch our brand new website and revamped Social Media! Alongside our fresh new look, we have lots of plans to create even more impact in the community - a bigger, better and more successful Carnival than ever, which ultimately will mean more money raised for village clubs and societies.

Check out the website at [www.woodchurchcarnival.uk](http://www.woodchurchcarnival.uk) and follow us on Socials @woodchurchcarnival for lots of information on the day and how you can get involved. For example, joining the parade, hosting a stall, volunteering your time or performing on the main stage. More information will be added to the site and our Socials as we get closer to the date, so please keep checking back.

To celebrate, we invite you to take part in our Carnival Trail, also from 6<sup>th</sup> June. Head to the Hub to collect your Trail Tracker, then go in search of 10 photos from Carnivals gone by hidden around the village. Find them all, note their locations, and hand your tracker back to the Hub for your chance to win 10 ride vouchers for the funfair at Carnival 26! And if you happen to know any fun facts about the people or floats in the photos, you can write them on your entry - we love to hear stories about previous Carnivals! On that note - keep sending us your Carnival memories via the website or socials - we will add them to the gallery.

And finally... the Carnival is run predominantly on donations. The more money we raise, the bigger and better Carnival can be and we will have more funds to share with local groups that benefit our community. With that in mind, all donations, however small are incredibly gratefully received. Please follow the QR code to make your donation. Thank you so much!



**Woodchurch Carnival 2026 - the countdown begins!**

## WOODCHURCH CARNIVAL TRAIL!

All around the village are hidden images of carnivals gone by. Take a stroll to see if you can find them all. Mark them off against the Trail Tracker below, noting where you found each numbered image.

Hand your form back into the Woodchurch Hub and all correct entries will be put into a prize drawer to win £20 of ride vouchers for the Carnival!

We will announce the winner on our Social Media at the end of June 2025.

Bonus points if you can tell us anything about the photo in question. Who is in it? What year was it? And why on earth is that man dressed as a baby? (Oooh, that might be a clue!)

Picture number	Location found	Any information?
1		
2		
3		
4		
5		
6		
7		
8		
9		
10		

## WOODCHURCH VILLAGE LIFE MUSEUM

Thank you to all the subscribers to the WVLM lottery draw. You will see the May winners of 2025 below.

There is still time to be included in the draw and so if you still wish to subscribe (£10 for the latter 6 months of the year) please contact [enquiries@woodchurchheritagetrust.uk](mailto:enquiries@woodchurchheritagetrust.uk) or Woodchurch HUB on 01233 861381 - or come in to The HUB.



### May 2025 Draw Results

1st prize	£50	Sheona Taylor	1123
2nd prize	£30	Nicola Davy	781
3rd prize	£20	Margaret Sawyer	1275

For more information contact us at [enquiries@woodchurchheritagetrust.uk](mailto:enquiries@woodchurchheritagetrust.uk) or phone 01233 860586 or visit our Web site [www.woodchurchheritagetrust.uk](http://www.woodchurchheritagetrust.uk)

# Simple Kent Funerals

caring • flexible • imaginative • economical • local  
Applefield Cottage, Redbrook Street, Woodchurch TN26 3QS



Call Toby on 07806 613297 (24/7) • [www.simplekentfunerals.co.uk](http://www.simplekentfunerals.co.uk)