



WOODCHURCH COMMUNITY NEWS

The village community working together

May 2025

Contact us: Telephone 01233 861381 Email enquiries@woodchurchhub.uk Web www.woodchurchhub.uk

OVER 1,000 COPIES distributed every month in the Woodchurch area

WOODCHURCH Community Calendar



Weekly events:

Saturdays:

- Boot Camp** 9:00am-10:00am on the Village Green
Museum Open 10:00am to 4:00pm

Sundays:

- Museum Open** 10:00am to 4:00pm
Outpost Church 10:30am-11:45pm in the S&G Community Centre, Lower Road
Karate 10:00am-12:00pm in the Jean Mealham Centre

Mondays:

- Pilates** 9:00am-10:00am in the Memorial Hall
Tai Chi and Qigong 10:00am and 11:00am at the S&G Community Centre
Knit and Natter 2:00pm - 3:30pm in the Jean Mealham Lodge
Line Dancing 2:00pm - 4:00pm in the Jean Mealham Centre
Junior Tennis coaching Red-3:30pm, Orange 4:30pm, Green/Hand Ball 5:30pm, Hard Ball 6:30pm at the Tennis Club
Beavers 6:00pm-7:00pm in the S&G Community Centre
Group Fitness Strength Training 6:15pm and 7:15pm in the Memorial Hall

Tuesdays:

- Pilates** 9:00am-10:00am, 10:15am-11:15am and 6:00pm-7:00pm in the Memorial Hall
Coffee Morning 10:00am-12:00pm in All Saints Church
Little Leaves Forest Schools 10:00am-12:00pm under 5s Play Grp
Puzzle Club 2:00pm-4:00pm in the Jean Mealham Lodge
Cubs 5:30pm-7:00pm in the S&G Community Centre
Karate 7:00pm-9:00pm in the Jean Mealham Studio
Salsa Dance 7:30pm-8:30pm in the Jean Mealham Centre
Scouts 7:30pm-9:00pm in the S&G Community Centre

Wednesdays:

- Pilates** 9:00am-10:00am in the Memorial Hall
Yoga 10:00am-11:00am in the Memorial Hall
Museum Volunteers - maintenance and gardening 9:30am-12:00pm at the Museum
Social Pop-In 2:00pm-4:00pm Tea and coffee and boot fair marquee at the Jean Mealham Centre
Junior Tennis coaching Red/Orange-4:00pm, Green/Hard Ball-5:00pm the Tennis Club
Rainbows 5:00pm-6:00pm in the S&G Community Centre
Fish and Chips 4:30pm-7:30pm in the Village Car Park
Brownies and Guides 5:45pm-7:15pm in the S&G Community Centre

Thursdays:

- Art Society** 10:00am-1:00pm in the Memorial Hall
Margaret Morris Movement 2:15pm-3:45pm in the S&G Community Centre, Lower Road
Group Fitness Interval Training 6:00pm-7:00pm in the Memorial Hall
Badminton 7:00pm-11:00pm in the Memorial Hall
Karate 7:00pm-9:00pm in the Jean Mealham Centre

Previous editions of the Newsletter can be found on The HUB Web site www.woodchurchhub.UK

Fridays:

- Zumba with Hannah** 9:30am in the Memorial Hall
Little Leaves Forest Schools 10:00am-12:00pm under 5s Play Grp
Squirrels 5:30pm-6:30pm in the S&G Community Centre
Adult Tennis coaching 5:30pm at the Tennis Club

Other Events:

- Thu 1st **Social Prescribers** - 1:00pm to 4:00pm in The HUB
Sun 4th **Morning Worship** - 11:00am at All Saints Church
Mon 5th **CARM** - 10:30am in the Memorial Hall
WLHS "Kill or Cure" - 7:30 in the Memorial Hall
Tue 6th **Evening Prayer** - 4:00pm at All Saints Church
Cottage Flowers evening tour - 6:30pm at Woodchurch Cottage Flowers
Thu 8th **VE Day80 - Buffet lunch** - 11:00am in the Memorial Hall
Citizens Advice - 1:00pm to 3:00pm in The HUB
Sunset Ceremony - 8:30pm at the War Memorial
Beacon lighting on The Green - 9:30pm
Fri 9th **Woodchurch Players Fun Auction** - 7:00 at the Memorial Hall
Sat 10th **Woodchurch WI Quiz** - 7:30pm in the Memorial Hall
Italian Feast Dinner - 7:30pm at Wayfarer Wines
Sun 11th **BCP Evensong** - 6:00pm at All Saints Church
Tue 13th **Evening Prayer** - 4:00pm at All Saints Church
WI - Open meeting and "Anxiety" - 7:15pm in the Memorial Hall
Wed 14th **Borough Councillor Surgery** - 11:00am to 12:00pm in The HUB
Sat 17th and Sun 18th **WYT Weekend** at All Saints Church
Sun 18th **Morning Worship** - 11:00am at All Saints Church
Sunday Saints - 3:00pm at All Saints Church
Tue 20th **Evening Prayer** - 4:00pm at All Saints Church
Thu 22nd **Neighbourhood Watch Surgery** - 1:00pm to 3:00pm in The HUB
Parish Council Meeting - 7:00pm in the Memorial Hall Annexe
Fri 23rd to Sun 25th **Woodchurch Art Society Art Show** - in the Memorial Hall
Sat 24th to Sun 25th (inc half term weekday mornings) **Shrapnel Boys Trail** at Woodchurch Museum
Sun 25th **BCP Holy Communion** - 8:00am at All Saints Church
Tue 27th **Evening Prayer** - 4:00pm at All Saints Church
Sat 31st **Vertical Wine Tasting** - 12:00pm at Wayfarer Wines



The Full Community Calendar can be found at www.woodchurchhub.uk/community-calendar

All Saints Church



Dear Friends,

I hope that many of you will have enjoyed a good break over Easter with all the fine Spring weather. It has been great to see all of the flowers in bloom and trees in blossom and the lambs in the fields around us.



Easter is the most important time of the year for us as Christians. Holy Week started with a visit from Joey and Eeyore the donkeys on the Green at Woodchurch, as we celebrated Palm Sunday. We then had services every day, moving around all of our village churches as we remembered and reflected on the suffering and death of Jesus. We held an Easter egg hunt too - a good chance to welcome local families into our building and churchyard - it was good to see so many children enjoying our toy space in church as well as hunting for eggs. On Easter Day this year we celebrated the Risen Lord with a dawn service in St Mary's High Halden and our main Easter Service was here in All Saints - I hope that some of you will have been able to join us this time - it was great to see quite a few people under 30 in church.

At the end of last month we welcomed one of the Church of England's disability advisors to help us to identify how we can better meet the needs of those who visit our churches who may have a disability or impairment - we will aim to report back next month.

On Sunday 18th May in All Saints we will be starting a new and fun afternoon service (3pm) for families and the young at heart "Sunday Saints" - please join us for a Bible story, prayers, singing, craft and refreshments - we will aim to spend some of the time outside weather permitting.

Please get in touch if you would like to chat to one of the clergy team - we are always happy to answer questions or help with difficulties. You can also reach us by email on heretohelp.woodchurch@gmail.com

Every Blessing, Reverend Sue



We're Hiring

PERIPATETIC SUPPORT WORKER



Scan here to find out more and apply!



Kent

Registered Charity no. 291662

WOODCHURCH ART SOCIETY

PROUDLY PRESENT

ANNUAL EXHIBITION 2025

Once again, we would like to extend a warm welcome to you to visit our Annual Exhibition in the Woodchurch Memorial Hall on:-

Fri 23rd May 7:00pm - 9:00pm

Sat 24th May 10:30am - 4:30pm

Sun 25th May 10:30am - 4:30pm

Free Admission

We look forward to seeing you all again this year for

TEA - COFFEE - CAKES & SOME GREAT ART!

Bethersden Cricket Club

The 2025 cricket season is about to start and Bethersden Cricket Club requires players. We play Saturday friendly matches comprising of 30 overs each starting at 1.00pm therefore finishing around 6.00/6:30 pm. We have approximately 20 fixtures booked so far this year and all are within half an hour's drive of Bethersden. We welcome players of any ability, age and gender to participate and be part of a resurgent friendly club.



We have a net session on Thursday evenings from 5.45pm to dusk. We also hold our junior training programme in tandem with the net sessions so if you are interested in participating in that please contact the writer for further information or our social media outlets.

Should you be interested in joining, please contact either our Club Captain Nick Eve on [07736 648097](tel:07736648097), Vice Captain Ian Howes on [07720 652848](tel:07720652848) or Club Chairman David Jahnz on [07736 553357](tel:07736553357)/email d.r.jahnz@btinternet.com.

We look forward to hearing from you and hopefully joining our club.

WOODCHURCH SURGERY UPDATE

Sadly we have just missed April's Bowel Cancer Awareness month. So perhaps I can highlight that the national bowel cancer screening program invites everyone between 54 and 74 to send a poo sample to be examined for microscopic altered blood. If this is present then you will be invited for a colonoscopy, which is a camera test of your large intestine. They are lowering the invitation age to 50 so if you are aged between 50 and 54 don't be surprised to receive a test. It is repeated every two years and I urge anyone receiving a test to get on and do it. We do actively chase up non-responders, so why not save us some time. If you are over 74 and want to continue the test, or think you missed one, please call 0800 707 6060 to request one.



Next month highlights Skin Cancer Awareness, which is entirely apt as the first May Bank Holiday seems to end with lots of sun burned people. UVA waves are longer wavelength so penetrate the skin layers deeper leading to structural damage and the signs of aging. UVB are short wavelengths and are more responsible for the burning of skin and damage to the squamous and basal layers of the skin. Damage to these can lead to skin cancers which most commonly can be treated with fairly minor intervention with creams, freezing or local excision. UVB also increases the risk of Melanoma skin cancer which is usually a darkly pigmented mole and can grow/spread rapidly - these need very urgent attention. It is worth noting that use of a sunbed even once in your life increases your risk of Melanoma by 20% (especially if below age of 35).



Our skin is our largest organ so we have plenty of it. Please show us any skin lesion which appears to be growing or non-healing, especially if darkly pigmented. By acting early we are more likely to be able to treat skin cancers before needing extensive surgery or spreading further. Much better to prevent by applying lots of sun screen of at least factor 30 (50 is better), avoiding the highest UV levels (11am to 3pm in the UK) and wearing sunglasses with at least 400 UV protection. Hats are good protection especially if you have a "thinner thatch" but also help protect the ears.

Despite the concerns that we had not been able to clone Chris Hamilton before her retirement, the workings of the surgery have been fully operational. Nurse Sarah Trigg has been supporting Chris for some time with diabetes and is growing in knowledge and experience. She will soon be joined by a diabetic nurse specialist, Sasha Tokymenko, who has a tough set of figures to follow. Also joining our team is Nurse Alison O'Donoghue, who specialises in respiratory disease and will be leading in COPD. We really look forward to them joining the team in early May and I'm sure that you will all give them the usual warm Woodchurch welcome.

The Covid vaccination program has also started at the beginning of April. The cohort for this campaign are those over 75 or anyone with a weakened immune system. We have been involved in immunising those in care homes and those who are housebound but are not doing clinics in the surgery. A number of pharmacies are doing walk-in clinics for Covid vaccines and I suggest looking on-line "how do I get a Covid vaccine" or ring 119 to book in.



Wishing everyone a great start to the summer on behalf of the Surgery - Jack Hickey, GP

Surgery Opening Hours

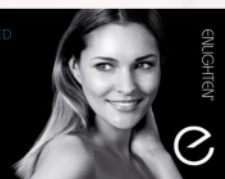
Monday to Friday 9am to 5pm



Hamstreet
Dental Clinic

Welcomes You

ENLIGHTEN ACCREDITED
PROFESSIONAL TEETH
WHITENING CENTRE

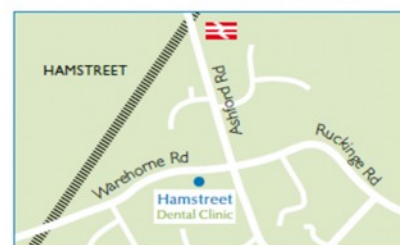


Where to find us...

Hamstreet Dental Clinic
Warehorne Road
Hamstreet
Kent TN26 2JJ



Find us on facebook



Tel: 01233 733848

Email: hamstreetdentalclinic@gmail.com

Woodchurch Players

Dates for your diary:

- Friday 9 May Fun Auction, Woodchurch memorial hall. Starts at 7:30pm. £5 per person. Tickets available now from The HUB or from <https://www.ticketsource.co.uk/woodchurchplayers>

- Wednesday 18 June Players Society AGM, Woodchurch memorial hall. Starts at 7pm. Free. All very welcome!

- Saturday 21 June Evening of Music, Jean Mealham pop-in centre. More details to follow.

- 23-25, 30 & 31 January 2026 Pantomime, actual Pantomime tbc.





Parish Council Website: www.woodchurch-pc.gov.uk
The next Parish Council Meeting is on Thursday 29th May
at 7pm in the Memorial Hall Annexe

The Annual Parish Meeting!

The Date and Venue will be available on the Parish Council Noticeboard and Website Very Shortly!

All Residents are invited to join the Annual Meeting for
The Electors



2024-2025 End of Year Summary of Fianaces

Overall receipts were £58,521.12, of which £45,006 was the precept. Other receipts of £13,515.12 were made up of mostly £11,027 grant from Ashford Borough Council and a VAT recovery payment of £1,794.12.

Gross payments totalled £78,403.06 with £6,942.53 in VAT to recover. Net payments were £71,460.53, versus the £93,300 budget. Overspending in running costs of the Parish Council were £3,065 however these were more than offset by savings in other areas coming in £4,045 under budget.

Unspent earmarked funds were £19,100 which have been carried forward to 2025-2026 and repurposed as agreed when setting the 2025-2026 budget.

Cash in the bank at 31st March 2025 stood at £52,939.81 (£482.58 current account and £52,457.23 savings account).

There was an outstanding invoice for Hub electric work of £2,100 plus VAT. (£2,520). After allowing for this along with £19,100 unspent earmarked funds, and £20,000 general reserve, we have brought forward cash of £11,319.81. There is around £6,900 in VAT still to recover on payments made in 2024-2025.

Water Pump

The final stages of the restoration on the pump are about to commence. This will be carried out on-site.



To help keep the Newsletter free for the village please become one of our sponsors, or give a donation if you can at.
www.woodchurchhub.uk or at The HUB

Is There Still Time To Become a Councillor?

Whereas there are two Parish Councillor positions open, we have received interest in these. If you still have interest in joining and you have attended two Parish Council meetings in the last 12 months then please contact the Parish Manager on clerk@woodchurch-pc.gov.uk or mobile 07793 807863. Alternatively speak to one of the current Council Members.



If you have any interest or questions then please email the Council on clerk@woodchurch-pc.gov.uk

Application	Location	Parish Council	Ashford Planning
PA/2024/1795	Keepers End, Shadoxhurst Road	Support	Approve with conditions
AP-90702 3351385	Balcony Farm, Haycross Lane.	Object	Waiting Decision
PA/2024/2379	Stonebridgelands, Front Road	Support	Waiting Decision
AP-90720 3355619	Annexe, Cruttenden Farm, Brook Street	Continue to Support	Waiting Decision
PA/2024/2281	Clappers Mead, Bethersden Road	Support	Waiting Decision
PA/2025/0111	Stonebridgelands, Front Road	Support	Existing use/development is not lawful
OTH/2025/0219	Land off Front Road, Woodchurch	Object, southbound bust stop on Front Rd wrong location for safety reasons and is lacking planned shelter	Approved
OTH/2025/0211	Land off Front Road, Woodchurch	Unable to comment until traffic measures resolved	Approved
OTH/2025/0184	Land between, 82-120 Front Road	Unable to comment until traffic measures resolved	Waiting Decision
PA/2025/0682	12, Kirkwood Avenue	Support	Waiting Decision
PA/2025/0581	Mill Cottage, Bethersden Road	Support	Waiting Decision
PA/2025/0536	Maidenwood Farm, Haycross Lane	Object on the grounds it doesn't appear to comply with HOU5	Waiting Decision
PA/2025/0478	Berridge Farm, Brook Street	Support	Waiting Decision

Planning Applications Considered

Table Tennis on Wednesday evenings

There are now spaces at this informal club. We meet from 7-9 pm at the Jean Mealham Centre on Lower Road.

More information from
enquiries@woodchurchhub.uk or phone
01233 861381





FROM PETER NEW NEIGHBOURHOOD WATCH



I hope that you are enjoying the better weather and lovely sunshine as Spring finally arrives. We must just of course adjust our crime prevention thinking as the warmer weather comes.

More windows open, patio doors etc, its easy to just be popping out and not close properties up securely. Afternoon school run time is an example. "I will only be out for about 25 minutes " at about 14:45hrs. Criminals know this!

Having said that burglaries are extremely low in Kent however we do not want to present a gift opening so always secure your property even when just "popping out. You would have to be unlucky, it would be a "chancer and opportunist" but we don't want our crime prevention based on being lucky!

I need you to be joining Neighbourhood Watch as we build a very strong membership to all play a part in keeping Woodchurch residents crime free and importantly free from the fear of being a victim of crime.



I need you. I need your eyes and ears
Everyone of you that joins Neighbourhood Watch I see as a jigsaw piece, each of you becoming part of a picture of Woodchurch to help keep the area crime free and residents free from the fear of being a victim of crime also.

A strong NHW Woodchurch that tells criminals you are not taking on an isolated vulnerable person who lives alone, you are taking on a whole community that is standing together. That is why I need each and every crime reported so we build up a picture of criminal activity.

Do not go down the road of " the police are too busy". " "the police won't come " "the police won't do anything" They won't and can't if they don't know! The police may have faults but one thing is for sure they are not clairvoyant! They must be told.

PLEASE REPORT ALL CRIMES AND GET A CRIME NUMBER
Nobody ever hesitates to call the fire brigade, same for the police please !



Stay safe, secure, alert and vigilant

Thank you

Peter

Peter New (peternew1@aol.com) and 07768437422.

Community Neighbourhood Watch

Meadow update May 2025

The dandelion-like prickly ox-tongue had again become a maintenance problem by the late mid-summer of 2024, as was that of the creeping and spear thistles. Keeping the grass down around the Queen's Green Canopy trees also had to be done on five occasions.

The meadow received its annual cut on August 1st last year, after which we laid down some further tarpaulins to create bare patches before introducing more plants of cowslip and field scabious in the following December. In the previous year some of these cowslip patches had become swamped by small catstail grass that was present in the meadow seed mix.

In the autumn, the interior hedge perimeter was trimmed where it was beginning to shade the grassland, although, unfortunately, it was too wet in



September and some of the tracks became muddy and waterlogged. The giant bolete mushrooms that appeared under the veteran oak at the top of the lower meadow were probably of *Boletus radicans* - in the same place as last year.

An extremely wet February and March this year made the circular paths very muddy, exacerbated by the tractor tyres, followed by the very dry and sunny beginning to April, when soil cracks began to appear on the circular path. Initially, the cowslips, foxgloves, red campion and the fritillaries that we planted two years ago are the most obvious sources of colour. Fritillaries are quite subtle



and sometimes difficult to pick out among the long grass. Have you seen them? Look for the pink ragged robin flowers in May, with meadow buttercups and ox-eye daisies yet to come. The meadow seems to be attracting more wildlife. Last year the small copper butterfly, that feeds on sorrel, was in evidence and later we saw the ubiquitous grass-feeding meadow brown, gatekeeper and marbled white butterflies. There is plenty of evidence of bank voles, at least one slow-worm, and kestrels hovering overhead.

Please pick up after your dogs - we're trying to reduce the fertility of the site with our management! And please try to restrain them from rushing through and trampling the long grass.

Thank you.

Peter Buckley

Anna Astin came to Woodchurch WI's April meeting with a presentation about women aviators who have made history in air and space travel. Her well researched and illustrated talk soon dismissed any notion that women's roles in aviation were merely airline "Trolley Dollies".

The first female pioneers in air travel were mainly air balloonists. Elizabeth Thible 1786 was the first woman to make a flight in an un-tethered hot air balloon. She famously dressed as the Roman goddess Minerva to welcome the King of Sweden to France. Whereas Madame Poitevin performed her stunts dressed as Europa, riding on horseback hanging from a balloon. The American Aida de Acosta was the first woman dirigible pilot. Anna went on to discuss the similarities in careers between Amy Johnson and Amelia Earhart.

The First World War saw the start up of the Women's Royal Air Force in which women became mechanics to free up men in the war effort. Disbanded in 1921, it was re-formed during WW2 as the WAAF. In the Air Transport Auxiliary women were employed to transport aircraft between factory and Airfields.

During 1941 in Russia under Stalin, Marina Raskova set up an all women's flying regiment the 588th Night Bomber Aviation Regiment known as "The Night Witches". They gained notoriety for their heroic night-time tactics.

Women also played a vital part in the space race. The first female cosmonaut into space was Valentina Tereshkova, who flew Vostok 6 in 1963. The first (STS-7) and third (STS-41-G) American female NASA astronaut was Sally Ride. She spent fourteen days in space during the 1980s as part of the Challenger Shuttle. Helen Sharman, became the first British and Western European woman to visit the Mir space station in May 1991.

Anna went on to remind us that the author of the Biggles books, Captain W. E. Johns, also wrote the "Worrals of the WAAF" series with a female pilot as heroine, whilst Dorothy Carter similarly wrote of female pilots in "Star of the Air".



In the competition calling for items synonymous with Yorkshire, Debbie (a bag of Jelly Babies first produced in Yorkshire) and Barbara (a biography of Richmal Crompton born in Bury) tied for first place and Gillian's Yorkshire cake was third.

At the next meeting 13th May we shall be discussing the forthcoming resolutions and John Black will be giving a talk entitled "Anxiety". Meetings are held at 7.15pm in the Memorial Hall. We look forward to seeing you there.

For further information please find our website at Woodchurchwi.weebly.com or our Facebook page at www.facebook.com/WoodchurchWomensInstituteEastKent

WOODCHURCH WI OPEN MEETING

TUESDAY 10 JUNE 2025

DOORS OPEN AT 19.00 - MEMORIAL MAIN HALL
GUY BARTLETT WILL BE SPEAKING ON THE SUBJECT OF
CONCORDE
FREE ENTRY RAFFLE EVERYONE WELCOME

Quiz
Saturday 10th May

At 7:30 at The Memorial Hall
Tables up to 6 people
£5 per person
Bring your own refreshments,

To book your table
Contact Josie at
josie.mackie@btinternet.com

Organised by Woodchurch Wi

SURGERIES AT THE HUB

Each month the following organisations hold public, free, surgeries in Woodchurch HUB where you can come along and discuss any questions that you may have directly with them.

Social Prescribers



The Social Prescribers hold confidential consultation clinics on the 1st Thursday of each month from 1pm to 4pm.

Ward Councillor for Weald South



Cllr David Ledger holds monthly "Meet your Councillor" surgeries on the 2nd Wednesday of each month from 11:00am to 12:00pm

Ashford Citizens Advice



Ashford Citizens Advice holds confidential consultation clinics on the 2nd Thursday of each month from 1pm to 3pm.

Neighbourhood Watch



Peter New from COMMUNITY NEIGHBOURHOOD WATCH holds monthly surgeries on the 4th Thursday of each month from 1:00pm to 3:00pm

Could you help shape the future of the Memorial Hall?

Woodchurch Memorial Hall was opened in October 1958 in memory of those who lost their lives in WW1 and WW2. It was built on land that was close to the old British Legion Institute, which was destroyed by Doodlebug during WW2. It is now nearly 70 years old and is beginning to show its age.

Whilst the day-to-day running of the halls is managed by the very active Memorial Hall committee, the trustees of the Woodchurch Memorial Hall Trust (Charity# 1194883) are now looking to see how the halls can continue to best support the evolving needs of the village over the next 70 years.

The voluntary role of trustee does not include the operational running of the halls (though some of the existing trustees also sit on the Memorial Hall Committee), but to ensure the long term future of this very special village resource. With the changing requirements of a modern village hall, the trustees are looking to consult with the village to develop and implement a long term vision for the Memorial Hall buildings and its site.

To achieve this the Woodchurch Memorial Hall Trust are currently looking to appoint two additional trustees who can bring the necessary enthusiasm and experience to help make this vision a reality. You do not need to be a resident of Woodchurch parish to become a trustee, but if you feel you have skills that could help us take the Memorial Hall into the 22nd Century we would like to hear from you. For more information please contact Wade or Peter through the Woodchurch HUB at enquiries@woodchurchhub.uk or phone 01233 861381. Please leave your contact details and we will get back to you.



Evening Tour around the Cutting Garden



Come and join us on a delightful evening stroll and tour around our flower farm and see flowers especially grown for cutting. Enjoy an hour looking and learning how our flower farm works.

An evening stroll will be held on the first Tuesday of the month.

It is advisable to book. However, you can just turn up on the day. Come to as many dates as you like and see how the flowers change throughout the season!

Tours will be made available on weekends and other dates if there is enough interest.

Cost: £10 per person Time: 6.30-7.30pm

Address:

Brook Farmhouse, Woodchurch,
TN26 3SP

Contact:

07980449235

www.woodchurchcottageflowers.co.uk

Dates:

Tuesday 6th May 2025
Tuesday 3rd June 2025
Tuesday 1st July 2025
Tuesday 5th August 2025
Tuesday 2nd September 2025

Woodchurch Local History Society

The Woodchurch Local History Society meets on the first Monday of the month in the village Memorial Hall at 7:30pm. On Monday May 5th

our speaker is Andrew Ashton who will give us a talk entitled 'Kill or Cure - 200 Years of Herbal Remedies'. Andrew has indicated to me that he is not a herbalist trying to sell remedies to 'cure' modern ailments but he will be giving an amusing historical account of attempts to cure common diseases during previous ages.



You will be very welcome if you fancy coming along as a visitor. Visitors pay £3 at the door - however, there is no need to book. Just come along on the night and pay at the door.

Alternatively, if you think you might like to join the society then our annual membership fee is £12. We always welcome new members.

Our June meeting is on Monday June 2nd, 7:30pm when we have Melody Foreman giving us her illustrated talk 'The Wreck Hunter'. She will tell us the story of Terry Parsons who made it his job to attend many crashed aircraft during the Battle of Britain. He followed up many of the crashed aircraft with moving accounts of the family life of the pilots, both British and German. There are many moving stories.

We look forward to seeing you on May 5th and / or June 2nd. Thanks, Geoff 01233 860393.

Entry Forms now available from
www.woodchurchinbloom.com or
via Woodchurch HUB



A DATE FOR YOUR DIARY
19th July 2025
on The Green with Show exhibits in The Memorial Hall
Incorporating Traditional Country Crafts and Displays

The same categories as in 2023, so why not get growing & creating now!

All details are on the entry forms



Children's (up to 12 years) FUN mini

SCARECROW Exhibition

Scarecrows protect! What is yours Caring for?

Helping the butterflies, bees and baby birds?

Helping the crops and flowers grow?

Bring your mini scarecrow (up to 1 metre in height) to the Village Green between 9 and 10am for everyone to enjoy during our Flower & Produce Show on 19th July 2025 (SHOW starts at 12 noon)



WOODCHURCH IN BLOOM

Woodchurch Remembers VE Day 80

Buffet lunch from 11:00am

On Thursday 8th May we are hosting a buffet lunch for the Parish's wartime generation. Anyone aged 80 or over on that day is invited to celebrate the Victory in Europe of 8th May 1945.



The event will be held in The Memorial Hall starting with tea & coffee at 11am and lunch from 12. If you wish to attend you may bring a partner or carer and please register at The Hub [01233 861381](tel:01233861381).

Woodchurch Remembers will lay a wreath at the memorial boards in the hall at 12 and we intend to show the events in London on a big screen. It will of course be an opportunity to meet friends and be primarily a social event. The lunch will close by 2pm to allow the hall to be prepared for the next user.

Sunset Ceremony 8:30pm

Woodchurch Remembers will assemble with standards at the All Saints Church War Memorial, all are welcome to attend. We will lay a wreath, read the names of the fallen, give the exhortation, sound the last post and church bells will sound. We will then march to The Green.

Standards and the flag will be lowered to appropriate music and the beacon will be lit by Barbara Davey and a schoolchild. The beacon will remain burning until after 9:30pm. Woodchurch Remembers will then retire in good order to The Six Bells.

Donations for the event are being accepted via <https://gofund.me/22ef77ec>

Previous editions of the Newsletter can be found on The HUB Web site www.woodchurchhub.UK



Mad Hatter's tea party 8th June at the Museum

Upcoming events at Wayfarer Wines

Saturday 10th May Spring Italian Feast winemakers Dinner 7:30pm

Join us in welcoming springtime, we invite you to celebrate the season at our Four Course Italian Feast Winemakers Dinner, each course paired with our award winning wines. Experience the vineyard in full bloom as we embark on a culinary journey of locally sourced ingredients, £65pp member price £70 non-member.

Saturday 31st May Vertical Wine tasting 12pm

Vertical wine tasting at Wayfarer Wines offers a unique journey through time, allowing you to explore the evolution of each single wine style across multiple vintages. Imagine comparing the 2019, 2020, and 2021 vintages of Wayfarer's Pinot Noir, for example. By tasting these wines side-by-side, you begin to notice the subtle variations in colour, aroma, and taste, noting how the wine develops and matures over time. Discussions often revolve around the specific weather conditions of each year - the rainfall, the sunshine hours, the temperature fluctuations - and how these factors have shaped the final product. Lunch and canapes included, £65pp member price £70 non-member.

To become a member head over to our website www.wayfarerwines.com and sign up to our mailing list, you can then benefit from discounts online and in store.

Kind regards
Emma Ashford
07713 117721

Wayfarer
WINES

Woodchurch village life museum (wvlm)

We are now open for the 2025 season- do come and visit this special place which the village is very fortunate to have. Just a short walk down Suan's Hill, free admission.

Geoff Loynes, who many of you knew as Santa in your younger days, was the museum's founder and a well-known animator. We have an exhibition at WVLM celebrating his life, 1934-2024, and will also raise a glass to him at our upcoming AGM.

AGM for Woodchurch Village Life Museum

Friday 16th May 2025

7pm in the Memorial Hall Annexe

Light refreshments and memory sharing

We hope as many people as possible will join us- the AGM will be a short part!

Other events, to be held at WVLM are as follows:-

- 'Shrapnel boys' trail- half term w/ends 24th and 31st May plus mornings of that week.
- Mad hatter's tea party- Sunday 8th June 2-4pm.
- Wade's barbecue - Saturday 28th June 12-3pm.

Further enquiries and tickets from Woodchurch Hub.

Eleanor Johnson Your Woodchurch Travel Agent



Summer/Winter Sun Holidays City Breaks Ski
Longhaul Holidays Cruise Safari UK Breaks



**NO FEE
SERVICE!**

07772 710 996

eleanor@travologytravel.co.uk
www.travologytravel.co.uk/eleanor

100% Financially protected
ATOL, IATA protected



GET SPRING READY

WITH ERNEST DOE POWER | ASHFORD

Hendon Barn, Woodchurch, Ashford, Kent TN26 3QP
Tel: 01233 224860

ernestdoeshop.com

ernest DOE
POWER



Cranbrook Fishmongers are now doing
home deliveries in Woodchurch

EVERY FRIDAY & SATURDAY

Please call for more information

Jim: 07866 741288

FRESH FISH

Make A Difference



Landscaping in Ashford, Maidstone,
Heathfield and the surrounding area
Paving company covering Kent

For Enquiries:
07793 107246
07528 230530

info@kentbestlandscapers.co.uk

www.kentbestlandscapers.co.uk

Kent's Best Landscapers



Soft and
hard landscaping

Garden and
planting design

Garden patios, paving,
fencing and buildings

Garden and porcelain paving

New driveways

Stables build and
equestrian field fencing

Turfing

Garden irrigation

Outside sound and lighting

Summer houses

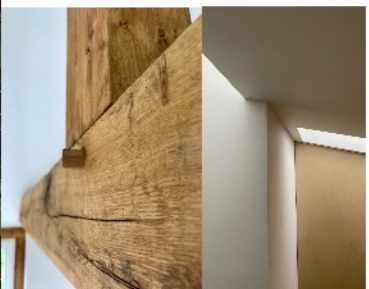
Composite and natural decking



Architect with > 25 years of experience
M: 07967 817 327
www.benhebarchitecture.co.uk



ARCHITECTURE
PLANNING APPS.
BUILDING REGS.
CONSTRUCTION



Sound timber framing timberology.co.uk



Everything **Outside**

Bringing New Life
To Your Garden

For A Quick Quote From A Company You Can Trust Call

☎ 01580 766 232 ☎ 07795 465 861

Welcome To Everything Outside

We cover a wide range of services to meet the requirements of our ever-growing client list, if you are looking for a company you can trust to provide a high standard of quality work covering

- ✓ Gardening
- ✓ Garden Design
- ✓ Fencing
- ✓ Clearance
- ✓ Landscaping
- ✓ Hedge Cutting
- ✓ Tree Surgery
- ✓ Digger Work

and much more. Then call our experienced team today on 07795 465 861. To view our full range of services, click on the link below.

Our head office is based in Tenterden, Kent and means we are in the perfect location to proudly service Kent and East Sussex. All our services are tailored to each job we carry out and our team are experience in all aspects of fencing and landscaping services making us your number one choice for all work you require.

Great Work

Great Reputation

Great Price

VERNACULAR HOMES

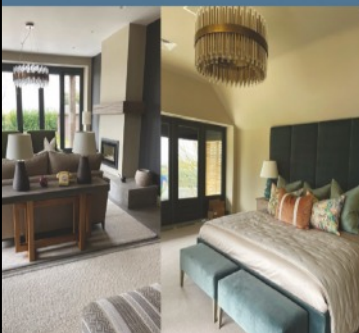
— design & build —



We work with homeowners and developers on new builds, barn conversions, renovations, restorations, remodelling and extensions.

Trust our experienced team to manage every step to bring your ideas or dream home to life.

vernacularhomes.com 01233 861177



Karen Stevens

Massage and Reflexology

Massage and Reflexology from my treatment room in Woodchurch

To book or to discuss your treatment needs call me on:

☎ 07808675251

OUR SPONSORS

fab feet

Professional Foot Healthcare

www.fabfeethealthcare.co.uk

Delivering high quality Podiatric care in the comfort of your own home.

Providing a reliable and friendly service of professional treatments for all of your foot ailments.

Call Michelle on:

Tel: 01233 731207

Mob: 07766 705824

Registered & Insured



Remedial massage therapy.

Your Local Woodchurch Massage Therapist

- Remedial Massage
- Sports Massage
- Holistic Massage

- Ultrasound Therapy
- Electrotherapy

- Injury Treatments & Rehabilitation
- Rehabilitation Taping/Strapping
- Athletic Taping/Strapping



Bookings - 07799221043

www.musclewhisperer.org.uk

Treatment Room - Little Vale TN26 3QW



musclewhisperer@outlook.com



WOODCHURCH COTTAGE FLOWERS



AN ARTISAN FLORIST & FLOWER GROWER, WE OFFER BOUQUETS, FAREWELL ARRANGEMENTS AND WEDDING FLOWERS.

ALL GROWN ON OUR SMALL HOLDING IN WOODCHURCH. WE WORK WITH NATURE AND THE SEASONS, NO CHEMICAL OR PESTICIDES USED

call or text 07960 449235

www.woodchurchcottageflowers.co.uk



Weekly-
Every Wednesday 10:00

Annexe Hall
Woodchurch
Kent
TN26 3PB

Yoga

Beginner Friendly
Everyone Welcome



Drop in £10
Preregister £8

mindfulmeadowyoga.co.uk
mindfulmeadow@yahoo.com



WOODCHURCH

SHOP ✿ BAR ✿ WINE TASTING ✿ TOURS

Thursdays to Sundays 11am - 5pm

<http://woodchurchwine.co.uk> tel:01233 860276

KENT

HOLIDAY COTTAGES

+44 (0) 1233 860 293

info@kentholidaycottages.co.uk

DK Plastering Services

All plastering work carried out
Fully Insured
Professional Workmanship



For a clean & tidy job call David
07974 891795
dk.plastering@hotmail.c.uk

You could advertise your company here
from as little as £10 per month

Visit the HUB Web site for more information
www.woodchurchhub.uk/the-hub/newsletters/parish-newsletter-advertising/

An evening with ... ABBA Chique

Sunday 10th August 7.30 pm

The hottest tribute to ABBA



Tickets £20
available at
Woodchurch HUB,
Carley Butchers
or call
07798 566849

Tea, coffee &
food will be
available to
purchase.
You are welcome
to supply own
alcohol

Dress to impress!

The Jean Mealham Centre,
Woodchurch TN26 3SQ



The SEND Consultancy Group

EHCP | Appeal | Tribunal

Experienced and IPSEA-qualified
SEND Law consultant, providing
independent professional guidance
and specialised support

OUR SERVICES:

- Advice Appointments
- EHCNA parental requests
- EHCP Review & Draft Checks
- Annual Reviews
- Appeal & Mediation Support
- Mediation
- Tribunal Support & Representation
- And other bespoke services

Contact Us: 0333 772 3845

info@thesendconsultancygroup.co.uk

thesendconsultancygroup.co.uk

WoodchurchYardTogether ("WYT")

Our story so far.....

In 2018, when my husband, Nick, came back from a Parish Council meeting commenting on the complaints received about the overgrown Churchyard, my immediate reaction was..... lets help!

We'd never even been around the back of the Churchyard, so the next evening, we thought we'd take a look..... wow, we hadn't realised quite how big the Churchyard was (we now know its 2.5 acres)!

Quickly realising teamwork was the only way forward,

'WoodchurchYard Together' was born and our first volunteer weekend kicked off in April 2019. Apart from a break through COVID times, we have had WYT volunteer weekends monthly ever since & are 100% funded by kind donations.

Photos I took in 2018 when looking around the back of the Churchyard for the first time:



You may be thinking WYT is all about cutting grass and eating cake!

However, we are proud to say that it is so much more and here are a just a few quotes from helpers to demonstrate why:

- 'I always made a cake for Churchyard volunteers to enjoy. Since losing my husband, I now work on WYT weekends and find that not only doing physical outside work, the social side has become very important to me. I am not the only person who benefits in this way' - Gillian
- 'I help out at WYT weekends as I like to give something back to the Village and I love seeing the flowers all out and my parents are buried in the Churchyard-its very sociable and everyone is supportive, there's no judgement and you just

come and do what you can do and enjoy tea & cake which is a bonus! - Jo

- 'My late wife had to nearly drag me along to the first WYT weekend! However even after the first hour, I realised how much I was enjoying myself and giving me a sense of purpose. I have been ever since and the social side still really helps me mentally' - Roy



EVERYONE IS VERY WELCOME!

Whether to garden, help make the teas, enjoy the wildlife and the beauty our Churchyard offers, or come for a chat... oh and a cake of course!

A massive Thank you to so many who have supported in so many ways over the last 7 years.

Why not be part of our story yet to be told and come along to our next WYT weekend on 17 & 18 May!

Philippa

Email: WoodchurchYardTogether@btinternet.com

WOODCHURCH VILLAGE LIFE MUSEUM

Thank you to all the subscribers to the WVLM lottery draw. You will see the April winners of 2025 below.

There is still time to be included in the draw and so if you still wish to subscribe (£10 for the latter 6 months of the year) please contact enquiries@woodchurchheritagetrust.uk or Woodchurch HUB on 01233 861381 - or come in to The HUB.



April 2025 Draw Results

1st prize	£50	Phil Quinn	1207
2nd prize	£30	John Gallagher	1052
3rd prize	£20	Peter Wood	874

For more information contact us at
enquiries@woodchurchheritagetrust.uk
or phone 01233 860586
or visit our Web site www.woodchurchheritagetrust.uk

Simple Kent Funerals

caring • flexible • imaginative • economical • local
Applefield Cottage, Redbrook Street, Woodchurch TN26 3QS

Call Toby on 07806 613297 (24/7) • www.simplekentfunerals.co.uk





Pondwood Solar Farm

NATIONAL COMMUNITY WALK

10 AM ON SUNDAY 8TH June 2025

Let's get together and walk the footpaths and lanes that would be affected by the proposed Pondwood Solar Farm.

On the same day, at the same time, similar walks are being organised across the entire country and all will be covered by regional television, radio and press.

The plan is to start our walk from Legge Farm from where we can easily access the first footpath.

Ample parking is available at Legge Farm

If you are able to join us, please email me with numbers.

Refreshments will be served and dogs are welcome

Say NO to Solar Farms on farmland

Vivienne Vidal, Legge Farm. Woodchurch

PLEASE SUPPORT US BY SIGNING A PETITION
AVAILABLE AT THE HUB ON THE GREEN IN
WOODCHURCH or EMAIL ME

vvidal@btinternet.com