



# WOODCHURCH COMMUNITY NEWS

*The village community working together*

*April 2025*

Contact us: Telephone 01233 861381 Email enquiries@woodchurchhub.uk Web www.woodchurchhub.uk

**OVER 1,000 COPIES distributed every month in the Woodchurch area**

## WOODCHURCH Community Calendar



### Weekly events:

#### Saturdays:

- Boot Camp** 9:00am-10:00am on the Village Green  
**Museum Open** 10:00am to 4:00pm

#### Sundays:

- Museum Open** 10:00am to 4:00pm  
**Outpost Church** 10:30am-11:45pm in the S&G Community Centre, Lower Road

- Karate** 10:00am-12:00pm in the Jean Mealham Centre

#### Monday's:

- Pilates** 9:00am-10:00am in the Memorial Hall  
**Tai Chi and Qigong** 10:00am and 11:00am at the S&G Community Centre

- Knit and Natter** 2:00pm - 3:30pm in the Jean Mealham Lodge

- Line Dancing** 2:00pm - 4:00pm in the Jean Mealham Centre

- Junior Tennis coaching** Red-3:30pm, Orange 4:30pm, Green/Hand Ball 5:30pm, Hard Ball 6:30pm at the Tennis Club

- Beavers** 6:00pm-7:00pm in the S&G Community Centre

- BodyTone** 6:15pm-7:00pm in the Memorial Hall

- BodyFlex** 7:15pm-8:00pm in the Memorial Hall

#### Tuesday's:

- Pilates** 9:00am-10:00am, 10:15am-11:15am and 6:00pm-7:00pm in the Memorial Hall

- Coffee Morning** 10:00am-12:00pm in All Saints Church

- Little Leaves Forest Schools** 10:00am-12:00pm under 5s Play Grp

- Puzzle Club** 2:00pm-4:00pm in the Jean Mealham Lodge

- Cubs** 5:30pm-7:00pm in the S&G Community Centre

- Karate** 7:00pm-9:00pm in the Jean Mealham Studio

- Salsa Dance** 7:30pm-8:30pm in the Jean Mealham Centre

- Scouts** 7:30pm-9:00pm in the S&G Community Centre

#### Wednesday's:

- Pilates** 9:00am-10:00am in the Memorial Hall

- Museum Volunteers** - maintenance and gardening 9:30am-12:00pm at the Museum

- Social Pop-In** 2:00pm-4:00pm Tea and coffee and boot fair marquee at the Jean Mealham Centre

- Junior Tennis coaching** Red/Orange-4:00pm, Green/Hard Ball-5:00pm the Tennis Club

- Rainbows** 5:00pm-6:00pm in the S&G Community Centre

- Fish and Chips** 4:30pm-7:30pm in the Village Car Park

- Brownies and Guides** 5:45pm-7:15pm in the S&G Community Centre

#### Thursday's:

- Art Society** 10:00am-1:00pm in the Memorial Hall

- Margaret Morris Movement** 2:15pm-3:45pm in the S&G Community Centre, Lower Road

- BodyBlast** 6:00pm-7:00pm in the Memorial Hall

- Badminton** 7:00pm-11:00pm in the Memorial Hall

- Karate** 7:00pm-9:00pm in the Jean Mealham Centre

Previous editions of the Newsletter can be found on The HUB Web site [www.woodchurchhub.UK](http://www.woodchurchhub.UK)

#### Fridays:

- Zumba with Hannah** 9:30am in the Memorial Hall

- Little Leaves Forest Schools** 10:00am-12:00pm under 5s Play Grp

- Squirrels** 5:30pm-6:30pm in the S&G Community Centre

- Adult Tennis coaching** 5:30pm at the Tennis Club

#### Other Events:

- Tue 1<sup>st</sup> **Songhaven Concert** - 2:00pm at Woodchurch House

- Evening Prayer** - 4:00pm at All Saints Church

- Thu 3<sup>rd</sup> **Social Prescribers** - 1:00pm to 4:00pm in The HUB

- Sat 5<sup>th</sup> **Museum Opens for 2025 season** - 10:00am to 4:00pm

- WinBloom Give and Take Event** - 10:00am to 12:00pm outside All Saints Church

- Sun 6<sup>th</sup> **Morning Worship** - 11:00am at All Saints Church

- Mon 7<sup>th</sup> - Mon 21<sup>st</sup> **Easter at the Rare Breeds**

- Mon 7<sup>th</sup> **CARM** - 10:30am in the Memorial Hall

- WLHS "Kentish Clerical Errors"** - 7:30 in the Memorial Hall

- Tue 8<sup>th</sup> **Evening Prayer** - 4:00pm at All Saints Church

- WI - Women in Aviation** - 7:15pm in the Memorial Hall

- Wed 9<sup>th</sup> **Borough Councillor Surgery** - 11:00am to 12:00pm in The HUB

- Thu 10<sup>th</sup> **Citizens Advice** - 1:00pm to 3:00pm in The HUB

- WW2 Air Crash Commemoration** - 3:00pm on the Car Park

- Sat 12<sup>th</sup> **Woodchurch Garage Sale** - 10:00am to 3:00pm around the village

- Easter Craft Market** at the Rare Breeds

- Sun 13<sup>th</sup> **Palm Procession and Eucharist** - 11:00am at All Saints Church

- Easter Craft Market** at the Rare Breeds

- Tue 15<sup>th</sup> **Stations of the Cross** - 7:00pm at All Saints Church

- Memorial Hall AGM** - 7:00pm in the Memorial Hall

- Fri 18<sup>th</sup> **Museum Open** - (Bank Holiday)

- Sat 19<sup>th</sup> **Easter Egg Hunt** - 2:00pm to 4:00pm at All Saints Church

- Sun 20<sup>th</sup> **Parish Eucharist** - 11:00am at All Saints Church

- Mon 21<sup>st</sup> **Museum Open** - (Bank Holiday)

- Thu 24<sup>th</sup> **Neighbourhood Watch Surgery** - 1:00pm to 3:00pm in The HUB

- Parish Council Meeting** - 7:00pm in the Memorial Hall Annexe

- Sun 27<sup>th</sup> **Morning Worship for St Georges Day** - 11:00am at All Saints Church

- Tue 29<sup>th</sup> **Evening Prayer** - 4:00pm at All Saints Church



The Full Community Calendar can be found at [www.woodchurchhub.uk/community-calendar](http://www.woodchurchhub.uk/community-calendar)

# All Saints Church



Dear Woodchurch Friends

The signs of spring continue to reveal themselves in All Saints' Churchyard (thanks to Woodchurch Yard Together (WYT)!): butterflies, bees and flowers, all emerging with new life. If you are reading this at the beginning of April you might have just celebrated Mothering Sunday or Eid al-Fitr. As the month continues, you might be celebrating Passover or Easter.



Imagine your favourite music, TV or film star . . . imagine your star riding up Front Road on an open top bus with crowds waving flags, laughing and singing. On the 13th, April Christians begin Holy Week, starting with Palm Sunday. It is the day when we remember Jesus riding on a donkey into Jerusalem with crowds of people joyfully welcoming him. Please join us at 11:00am on the 13th in All Saints, Woodchurch for our procession and Eucharist service.

Imagine your favourite star catching your eye in the crowd and asking you to go home and prepare your favourite meal so that the star and friends can join you for a special celebration. On the 17th April Christians remember Jesus and his friends gathering for a meal. The meal started with Jesus washing his friends' feet. I wonder how you might react if your favourite star tried to wash your feet! Then Jesus shared bread and wine. Jesus asked us to always celebrate this special meal to remember him. Please join us at 7pm on the 17th in St Margaret's Bethersden for our remembering of the last supper and washing of feet.

Friday 18th April is Good Friday. It is the day we remember Jesus being tried, tortured and sentenced to death. Imagine if you heard the day after celebrating that meal with your star, that the star had been killed. I wonder how you would react. Saturday is a quiet day, when we remember Jesus' life and death. Please join us at 12:00 midday on the 18th in St Mary's High Halden for a reading of the Bible telling us about Jesus' death.

Then on Sunday 20th April, Rejoice! Jesus is risen and a light has come into the world! A light of joy, peace and love! A light that will never be extinguished! We celebrate with delicious seasonal food, flowers and singing. Please join us at 11:00 on the 20th in Woodchurch for our celebration Eucharist service.

Finally, we have the Easter Bank Holiday to recover from celebrating Christ risen from the dead, celebrating Christ overcoming darkness and celebrating God's love for us and all creation.

Whatever the occasion or season you are marking, wishing you love, peace and joy this spring and Easter season

Maria

DENSWOOD

# Easter

## EGG HUNT



Come and join us for a fun afternoon

### 2pm

### Saturday 19th April

ALL SAINTS CHURCH  
WOODCHURCH



## WOODCHURCH ART SOCIETY

PROUDLY PRESENT

## ANNUAL EXHIBITION 2025

Once again, we would like to extend a warm welcome to you to visit our Annual Exhibition in the Woodchurch Memorial Hall on:-

**Fri 23rd May 7:00pm - 9:00pm**

**Sat 24th May 10:30am - 4:30pm**

**Sun 25th May 10:30am - 4:30pm**

Free Admission

We look forward to seeing you all  
again this year for

**TEA - COFFEE - CAKES & SOME GREAT ART!**





## FROM PETER NEW NEIGHBOURHOOD WATCH



As always, I hope this newsletter finds you all well and looking forward to the lighter evenings and warmer weather. It has been a strange winter and with all the rain I cannot believe we will face a hosepipe ban this summer, but you never know!

I am pleased to report progress in Woodchurch since the last issue. The need to stay focused on the core crime trends remains very important.

Cars, vans, sheds, garages, barns, stables and any external storage. Delivery scams and theft of internet shopping parcels off of doorsteps remains high especially with vans followed. As always SCAMS generally are a risk. **DO NOTHING IN A RUSH!**

At this time of year, I must alert the community to Rogue Traders calling to carry out and try to get residents to agree to **UNSOLICITED WORK ON THEIR DOORSTEPS.**

Never ever agree to unsolicited work no matter how cheap and attractive the price offered. These criminals start by being pushy and then can become extremely aggressive as the price rises from that first quoted.

Close your door and call the police on 999. Remember one resident may be strong and resist. Further down the road a more vulnerable person will become a victim.

These criminals have no moral compass whatsoever and will look for our elderly, our vulnerable, our disabled especially those who live alone.

Sometimes when a person is a victim, they are so embarrassed they do not tell family, friends or the police so we are completely unaware and so unable to issue crime prevention advice. Some lose their confidence and never really recover.

I understand and appreciate the risks to communities especially more rural ones.

If you recall I write on the 3 Facebook Groups for Woodchurch and many groups that also border your village. I am looking to continue to grow and build the Neighbourhood Watch Data base for the village so in the case of emergencies, alerts or appeals that need to be done I can write emails to you. I now also provide a drop-in surgery at The HUB from 1:00-3:00pm on the 4<sup>th</sup> Thursday of each month. I attended the full council meeting Thursday 27<sup>th</sup> March and made my written report.

With all my work the skill required is to give warnings, advice and guidance but not scare residents. Rural areas however will be a target as there is unlikely to be police patrols in the area which is why an early report to the police is vital so they can attend the area and hopefully intercept criminal actions. It is important that I encourage you report each and every



incident, even failed crimes. In all honesty I struggle with the failure of crimes to be reported no matter how small.

In my 35 years in the fire service nobody ever hesitated to call the brigade at the slightest sign of trouble. Sometimes that was burning toast or sausages BUT the fire service message was clear. **IF IN DOUBT CALL US OUT, GET OUT AND STAY OUT.** A slogan that has stood for over 60 years.

I have recently dealt with a crime in a neighbouring village where on Facebook reports and pictures of off-road bikes being ridden dangerously, recklessly and causing criminal damage drew much Facebook chatter and comment. **NOBODY RANG THE POLICE.** So, the police were totally unaware. Comments like "What are the police doing"? "The police won't come" Well they won't if they don't know!! They are not clairvoyant!!

How strange that if the bike had burst into flames on the roadside 10 calls would have been made to the Fire Service!!

**PLEASE REPORT EVERYTHING, YES IF NON-URGENT USE 101 BUT MOST MATTERS ARE CRIMES IN PROGRESS OR JUST HAPPENED AND THAT MUST BE A 999 CALL.**

That is the best chance for criminals to be intercepted. Importantly it allows people like me to issue crime prevention advice to combat criminal activities.

The worst example to bring home my point is sometimes a series of shed thefts occur, and the financial loss is low, so people do not report. Then a shed is broken into and expensive items like golf clubs, bikes, motorbikes and expensive fishing equipment is taken. When the police attend, they hear of 5 other shed thefts nearby. Had we known that we could have issued warnings and just maybe that last shed theft could have been reported.

**Many of these calls must be 999 CRIME IN PROGRESS OR CRIME ABOUT TO HAPPEN PLEASE DO NOT HESITATE**

At the time of writing this newsletter I am helping to run a Government Petition to seek a law change of CATAPULTS which are a constant problem in the District I have over 17,000 signatures to date. I will report on in the next issue. Updates on Facebook Groups.

**PLEASE JOIN WOODCHURCH NEIGHBOURHOOD WATCH,** email me below. I will also be in The HUB on Thursday 24<sup>th</sup> April from 1:00-3:00 if you would like more information.

Stay safe, secure, alert and vigilant

Thank you

Peter

Peter New ([peternew1@aol.com](mailto:peternew1@aol.com)) and 07768437422.

Community Neighbourhood Watch

### **SURGERIES AT THE HUB**

1 <sup>st</sup> Thursday - Social Prescribers	1:00-4:00
2 <sup>nd</sup> Thursday - Citizens Advice	1:00-3:00
4 <sup>th</sup> Thursday - Neighbourhood Watch	1:00-3:00
2 <sup>nd</sup> Wednesday - Borough Councillor	11:00-12:00

## Living Landscape March 2025

In March Woodchurch WI celebrated its 98<sup>th</sup> birthday with cake and wine plus Kristina Boulden talking about her farming life and the products made from the fleece of their indigenous local Romney Marsh sheep. These sheep have been on the Marsh since the 13<sup>th</sup> century and are dual purpose, providing salt marsh lamb and creamy lustrous wool. The benefits of wool include its being natural and renewable; it is fire retardant, durable and an insulator.

The 3,000 acre mixed farm has been in Kristina's husband Paul's family for at least six generations, but in 2008 they diversified and created Romney Marsh Wools, a collection of handcrafted woven items and lanolin based toiletries. They breed Romney sheep plus Merino; the latter providing hues such as grey and brown. It takes at least six months for the fleece to be turned into their vast range of products.

Members were shown different types of fleece and heard about the size of fibres being measured in microns and the process from shearing, washing, carding, spinning to finally weaving.

Kristina also explained how their logo came about. The initial letter R is a traditional shepherd's neck hook for catching sheep, owned by Paul's grandfather. Members were given the opportunity to try the lanolin based hand cream and purchase some of the many different products in the Romney Marsh Wool's range. This was a fascinating and informative presentation.

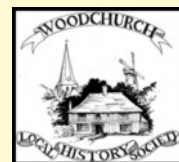
As usual the competition was well supported. Barbara's pottery churn decorated with Cornish tin mines was first, Lyn's Cornish pixie was second and Gillian came third with her home-baked Cornish sticky cake.

Next month's talk on April 8<sup>th</sup> takes place in the Memorial Hall at 7.15pm and is entitled "Women in Aviation" by Anna Astin.

For further information please find our website at [Woodchurchwi.weebly.com](http://Woodchurchwi.weebly.com) or our Facebook page at [www.facebook.com/WoodchurchWomensInstituteEastKent](https://www.facebook.com/WoodchurchWomensInstituteEastKent)



## Woodchurch Local History Society



The Woodchurch Local History Society meets on the first Monday of the month at the village Memorial Hall at 7:30pm to hear a talk of local interest. On Monday 7<sup>th</sup> April local author Ed Adams will be giving a humorous and illustrated presentation called 'Kentish Clerical Errors'. In Ed's words his talk will be a 'romp through Kentish stories of contumacious clergy, priestly peccadilloes and ministerial misbehaviours'. This will presumably be a cheeky trip through the centuries of various naughty goings-on conducted by priests, monks and others of Kent. This should be fun.



If you fancy coming to this talk then please come along - we look forward to seeing you. As mentioned above we meet at 7:30pm. Visitors, who pay £3 at the door, can arrive on the evening without any need to book. We also welcome new members who pay £12 annual subscription. This entitles you to a further five or six talks during this year's lecture programme.

Next month, on Monday May 5<sup>th</sup>, 7:30pm we will have Andrew Ashton's take on 'Kill or Cure - 200 Years of Popular Remedies'. Andrew will dwell upon quack medicines and cure-alls. Some highly dangerous ingredients were often used.

Please come and give us a try.  
Geoff [01233 860393](tel:01233860393).



# Quiz

## Saturday 10<sup>th</sup> May

At 7:30 at The Memorial Hall  
Tables up to 6 people  
£5 per person  
Bring your own refreshments,

To book your table  
Contact Josie at  
[josie.mackie@btinternet.com](mailto:josie.mackie@btinternet.com)

Organised by Woodchurch WI



## Memorial Hall AGM

Woodchurch Memorial Hall Management Committee Annual General Meeting is on Tuesday 15th April at 7.00 pm  
Everyone is Welcome.

Please come along to find out more about what we have been doing over the last year and our plans for this community facility for the next year. As you may know, the hall is run by a small team of volunteers who look after it for the benefit of everybody in the village. We would welcome new committee members, volunteers, or general offers of help. You need to have enthusiasm and a bit of free time – we're not looking for a huge commitment. Most people give two or three hours each month; some a bit less and others quite a lot more. We spend our time maintaining the building, looking after the finances, managing bookings, handling publicity and generally keeping things in order. Any help you can give would be really welcomed. We hope you can join us.



## Colin Whitaker

19<sup>th</sup> June 1941 - 6<sup>th</sup> March 2025

Colin Whitaker sadly passed away following a fatal heart attack on the 6<sup>th</sup> March aged 86. He was found dead on the last train back from London at Ashford station whilst returning home from an annual dinner held by his fellow retired veterinary surgeons.



Colin was well known and respected in Woodchurch, where for many years he lived in Orange Farm and tended to the health of many animals on local farms over the years. He was also very active in supporting Woodchurch Museum and he and Marjorie Fain would "walk the streets" selling the Museum 150 Club draw tickets.

Whilst Colin was working at a farm in High Halden in April 1985 he noticed a cow displaying strange neurological symptoms, which turned out to be the first recorded case of the neurodegenerative disease, formally referred to as Bovine Spongiform Encephalopathy (BSE) - also known as "Mad Cow Disease". It was thanks to Colins insistance that he was witnessing a new disease and his dedicated research that the government took BSE seriously. His work has been described as "one of the greatest contributions to human health in a generation".

## Woodchurch Memorial Hall Coffee Morning

Saturday 26<sup>th</sup> April - 10:00am till 12:00 noon

Entrance £3

Includes homemade cakes and coffee

Raffle. Cake Stall, Books, Cards

## Surgery Opening Hours

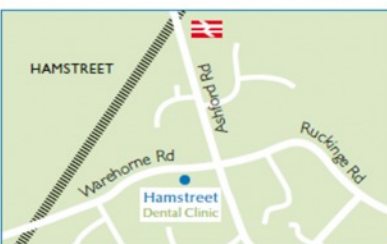
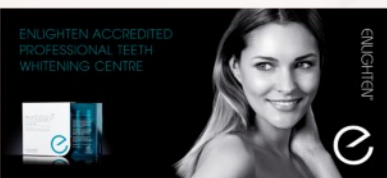
Monday to Friday 9am to 5pm



## Where to find us...

Hamstreet Dental Clinic  
Warehorne Road  
Hamstreet  
Kent TN26 2JJ

 Find us on facebook



**Tel: 01233 733848**

Email: [hamstreetdentalclinic@gmail.com](mailto:hamstreetdentalclinic@gmail.com)

## WOODCHURCH GREAT GARAGE/YARD SALE

**Saturday 12<sup>th</sup> April 2025 10am to 3pm**

A wonderful opportunity to put out a table... or a few.  
Sell all those 'treasures' you've been sorting in the past few months.

All welcome - sellers and buyers.

Tour the village streets on this day.

No cost to anyone  
the profits are yours!

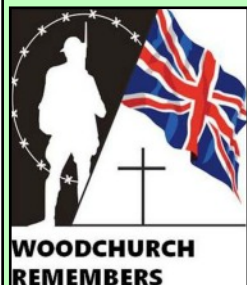
To be included on the map please email

[enquiries@woodchurchhub.uk](mailto:enquiries@woodchurchhub.uk) or visit  
The HUB



If you live outside of Woodchurch centre, or live on the Appledore Road, Brook Street or in Bridge Close or Brattle and will be affected by the scheduled road closure at the bottom of Front Road, space will be available for you to use in the car park at the Jean Mealham Centre. For more information contact June at [juneandsuz@yahoo.co.uk](mailto:juneandsuz@yahoo.co.uk)





In the last newsletter we stated that we would be producing plans for 2025, here now is the first of them. We are organising an event to mark Victory In Europe Day, VE Day80. It seems hard to believe but the Second World War in Europe ended eighty years ago on 8<sup>th</sup> May.

#### Thursday 10<sup>th</sup> April

On Thursday 10<sup>th</sup> April the group will be commemorating the 80<sup>th</sup> anniversary of the crash to the South of Village near what is now the Rare Breeds Centre. The collision between a RAF Spitfire and a USAAF Curtis Commando Transport and took the lives of all 5 Pilots and crew. We will assemble at Hub Car park at 3 pm and drive to Rare Breeds and walk to the crash sites. On return we will lay floral tribute at Village Green Airman's Memorial Oak. Villagers are welcome to join us - please contact Don .



#### Thursday 8<sup>th</sup> May - VE Day80

To mark the occasion we invite everyone who will be over 80 on 8th May 2025 to a buffet lunch in the Memorial Hall on that date. Doors will be open from 11AM and each guest may bring a carer or partner. It is important that we have an indication of numbers so to allow us to plan please book your place through The Hub before the 30<sup>th</sup> April - either in person, by phone [01233 861381](tel:01233861381) or by email [enquiries@woodchurchhub.uk](mailto:enquiries@woodchurchhub.uk).

On the evening of the 8<sup>th</sup> May, Woodchurch Remembers will lead a Sunset Ceremony and the lighting of the Woodchurch Beacon on the green.

At 8.30PM we will lay a wreath at the War Memorial and then proceed to the Green where the following will take place.

- A recording of King George VI's address on VE Day will be played.
- The Union Flag will be lowered.
- The Beacon will be lit.

Woodchurch Remembers is seeking volunteers to assist with this event, particularly the lunch. We are also fundraising for it so if you wish to make a donation please use either of the following:

- <https://gofund.me/22ef77ec>
- [www.woodchurchhub.uk](http://www.woodchurchhub.uk) and click on the "Donate" button. Select Woodchurch Remembers
- Visit The HUB and make a donation in person
- Call Don on [07796 228212](tel:07796228212).

I have been leading The Rhythm of Life Choir for nearly 15 years, and with two successful groups in both Tenterden and Benenden, I can safely say that bringing singing to the community is an absolute passion of mine.

I have watched over the years how singing not only brings joy and life but also creates friendships and brings communities together. It heals and lifts the mood. It makes the brain do things only music has the power to do!

Each week we will sing a mix of songs from across the years, chosen specifically to bring energy and feel-good vibes. The choir is totally new and so the twists and turns it takes will be endless. The possibility of movement, instruments and small performances.....one day.....could be in the future of the Phoenix Choir. But all positive choices that bring joy and Dementia awareness to the wider community.

The session will start with a warm up followed by 30 mins singing and then an all important natter with a cup of tea and a biscuit!

All are welcome. Please do come along for your free trial. ??????

For more information on The Rhythm of Life Choir or The Dementia Experience please call Carla on [07743 430797](tel:07743430797) or visit our website. [www.therhythmoflifechoir.co.uk](http://www.therhythmoflifechoir.co.uk)

I look forward to seeing you there - Carla

**Tuesday 10am**  
**Rolvenden Village Hall**

**A warm and uplifting choir to help bring joy and wellbeing to all those living with Dementia.**

**For more info call Carla on [07743430797](tel:07743430797) or visit [www.therhythmoflifechoir.co.uk](http://www.therhythmoflifechoir.co.uk)**



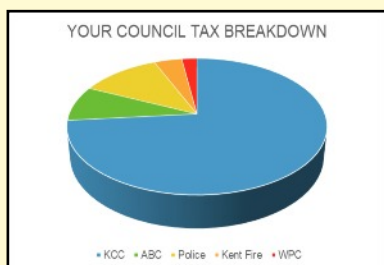


**Parish Council Website: [www.woodchurch-pc.gov.uk](http://www.woodchurch-pc.gov.uk)**  
**The next Parish Council Meeting is on Thursday 24<sup>th</sup> April**  
**at 7pm in the Memorial Hall Annexe**

### Where Is Your Council Tax Spent?

Now that all households in the borough have received their council tax bills, we thought it would be interesting to demonstrate where your money goes. For simplicity we have used the numbers for "An Average Band D Property".

<b>Total Payable</b>	<b>£2,301.78</b>
Kent County Council	£1,691.19
Ashford Borough Council	£193.58
Police and Crime Commissioner	£270.15
Kent Fire & Rescue	£94.86
Woodchurch Parish Council	£52.00



### Pond Wood Solar Farm Proposal

Pegasus, the managing company for a proposed solar farm at Pond Wood spanning both Woodchurch and Kenardington parishes, will be holding a drop in session on 24<sup>th</sup> April between 2pm and 7pm. It is an opportunity for residents of both parishes to view the details and ask questions.



This event will be held at Kenardington Village Hall, Kenardington

### Village Plan For 2025-2026

The 2025-2026 Village Plan was agreed at the March 27<sup>th</sup> Meeting, and will be presented to residents at the Annual Meeting of Electors (Annual Parish Meeting). The plan can be previewed on the Parish Council Website.

The reintroduction of a Community Warden, which is part of the plan and has been built into the 2025-2026 budget, will be debated at the Meeting on 24<sup>th</sup> April.

### Water Pump

Now that the weather is improving, the Parish Council has been informed that restoration work will likely commence during April. Please note that most of the work will be carried out on-site.



### There Is Still Time To Become a Councillor!

There are currently two Parish Council positions open for someone to join a dynamic council. If you are motivated in serving and helping your local community then this is an excellent opportunity. There are no formal qualifications required.



If you have any interest or questions then please email the Council on [clerk@woodchurch-pc.gov.uk](mailto:clerk@woodchurch-pc.gov.uk)

### Planning Applications Considered Over The Last Two Months

Application	Location	Parish Council	Ashford Planning
PA/2024/1795	Keepers End, Shadoxhurst Road	Support	Waiting Decision
AP-90702 3351385	Balcony Farm, Haycross Lane.	Object	Waiting Decision
PA/2025/0063	Honeysuckle Cottage, Bethersden Road	Support	Waiting Decision
PA/2024/2379	Stonebridgelands, Front Road	Support	Waiting Decision
PA/2024/2135 & PA/2024/2142	Fairview, Bethersden Road	Support	Waiting Decision
AP-90720 3355619	Annexe, Cruttenden Farm, Brook Street	Continue to Support	Waiting Decision
PA/2024/2209	1 West End, Susans Hill	Support	Waiting Decision
PA/2024/2281	Clappers Mead, Bethersden Road	Support	Waiting Decision
PA/2024/2359 & PA2024/2320	Coleham Green Farm	Support	Waiting Decision
PA/2025/0111	Stonebridgelands, Front Road	Support	Waiting Decision
PA/2025/0012	Oak Tree Cottage, Redbrook Street	Support	Waiting Decision
OTH/2025/0252	15, Henden Place, The Green	No Comment	Waiting Decision
OTH/2025/0219	Land off Front Road, Woodchurch	Object, southbound bust stop on Front Rd wrong location for safety reasons and is lacking planned shelter	Waiting Decision
OTH/2025/0211	Land off Front Road, Woodchurch	Unable to comment until traffic measures resolved	Waiting Decision
OTH/2025/0184	Land between, 82-120 Front Road	Unable to comment until traffic measures resolved	Waiting Decision
OTH/2025/0169	Land between, 82-120 Front Road, Woodchurch	Unable to comment until traffic measures resolved	Waiting Decision

**Tickets are on sale now for this year's  
Wealden Festival! - 21-22 June**

[www.wealdenliteraryfestival.co.uk/tickets](http://www.wealdenliteraryfestival.co.uk/tickets)

**WOODCHURCH VILLAGE LIFE MUSEUM**  
**Opens for the 2025 season Sat 5<sup>th</sup> April**



**This season will see two new exhibitions: -**

1. Tribute to Geoff Loynes the founder of the museum who died recently. Geoff was a very talented individual who was involved in many exciting projects.
2. V.E. Day. It is 80 years since V.E. Day and the exhibition shows what went on in Woodchurch on that day and also what went on in the wider world.

Thank you to all the subscribers to the WVLM lottery draw. You will see the March winners of 2025 below. There is still time to be included in the draw and so if you still wish to subscribe (£15 for 9 months, £10 for the latter 6 months of the year) please contact [enquiries@woodchurchheritagetrust.uk](mailto:enquiries@woodchurchheritagetrust.uk) or Woodchurch HUB on 01233 861381 - or come in to The HUB.

**March 2025 Draw Results**

1st prize	£50	Jan Thurley	662
2nd prize	£30	David McCausland	577
3rd prize	£20	Shirley Looker	202

For more information contact us at

[enquiries@woodchurchheritagetrust.uk](mailto:enquiries@woodchurchheritagetrust.uk)

or phone 01233 860586

or visit our Web site [www.woodchurchheritagetrust.uk](http://www.woodchurchheritagetrust.uk)

**Woodchurch Players will be holding a "Fun Auction" on 9th May.** This will be a truly fun evening. This is how it works.

Not essential, but people (couples, groups) are asked to bring a wrapped/disguised gift, (using newspaper, cardboard box, tin foil, brown paper and string etc.), up to the value of £8 (or more if you wish). This should be something you would like to receive yourself. Items can be anything from a book, box of chocolates, wine, beer, coasters, car cleaning stuff, good bar of soap, dried flowers, unwanted xmas presents, scarf, packets of seeds, small garden implements etc.

On arrival people place their gift on a table and receive a raffle ticket, the duplicate of which is put in a pot, and take their seats. At the start of the "Auction", a raffle ticket is drawn from the pot and the owner of the ticket comes forth and unwraps a gift, selects the next ticket, then returns to their seat with their gift. The same for the second ticket drawn. The third ticket drawn entitles the owner to choose either to select a gift or to "steal" one of the other two, which are held high for them to see. If they choose one being held up, then the person losing their gift comes forward to select another gift and draw the next raffle ticket. And so it goes on with people unwrapping/stealing gifts, which go back and forth, swapped between people, until all the gifts have been unwrapped with the last person having the choice of all the gifts or keeping the last one. People keep the one they hold on the last draw and go home with a gift.

Bring your own drinks, nibbles, a bar will be provided. Entrance £5 per person.

**SUPPORT YOUR LOCAL  
DRAMA SOCIETY**

We are looking for anyone interested in joining our friendly, hardworking, and dedicated committee team, which works with Woodchurch Players. Due to retirement, we have two volunteer roles within the committee:

**Costumes**

You will work as part of a small team to help maintain our vast selection of costumes. Choosing appropriate costumes for the performances could involve entering the loft space, so it would be beneficial if you are happy to use ladders. Also, you may be required to source new costumes online or in shops, this would be working within a budget. Applicants ideally need to be conversant with online retailing, but training can be provided if necessary. It's not essential if you can sew, but if you can that's a bonus!

**Safeguarding**

This is a more specialised role in our society and is vital as Woodchurch Players actively encourages children and young people to take part in our productions. This role entails: Following the guidelines set out by Kent County Council. Completing Safeguarding and First Aid training through Kent County Council (the society will cover this charge). Keeping registers of the children involved in performances. Arranging a rota of chaperones for each performance. Working with Kent County Council to write an agreement for parents/carers outlining requirements for performances, using Woodchurch players Safeguarding policy.



If you are interested in either of these roles or would like further information, please contact our Chairman - Les Fenton at [lesfenton926@gmail.com](mailto:lesfenton926@gmail.com) or our Secretary - Kerry Munday at [kerry.munday@theoldboiler.com](mailto:kerry.munday@theoldboiler.com)

**FREE RELAXED CONCERT**

**2:00pm, TUES. 1st APRIL 2025**

**Woodchurch House Care Home, Kent, TN26 3SN**



- Favourite songs from stage & screen
- Interactive singalongs
- Professional guest artists from Songhaven!

PROUDLY PRESENTED BY:

  
**The Dementia Experience**

Enquiries: [clara@dementia-experience.com](mailto:clara@dementia-experience.com)

  
**songhaven**



## Eleanor Johnson Your Woodchurch Travel Agent



Summer/Winter Sun Holidays City Breaks Ski  
Longhaul Holidays Cruise Safari UK Breaks



**NO FEE  
SERVICE!**

07772 710 996

eleanor@travologytravel.co.uk  
www.travologytravel.co.uk/eleanor

100% Financially protected  
ATOL, IATA protected



## GET SPRING READY

WITH ERNEST DOE POWER | ASHFORD

Hendon Barn, Woodchurch, Ashford, Kent TN26 3QP  
Tel: 01233 224860

ernestdoeshop.com

**ernest DOE**  
POWER



Cranbrook Fishmongers are now doing  
home deliveries in Woodchurch

**EVERY FRIDAY & SATURDAY**

Please call for more information

Jim: 07866 741288

**FRESH FISH**

## Make A Difference



Landscaping in Ashford, Maidstone,  
Heathfield and the surrounding area  
Paving company covering Kent

For Enquiries:  
07793 107246  
07528 230530

info@kentbestlandscapers.co.uk

www.kentbestlandscapers.co.uk

Kent's Best Landscapers



Soft and  
hard landscaping

Garden and  
planting design

Garden patios, paving,  
fencing and buildings

Garden and porcelain paving

New driveways

Stables build and  
equestrian field fencing

Turfing

Garden irrigation

Outside sound and lighting

Summer houses

Composite and natural decking



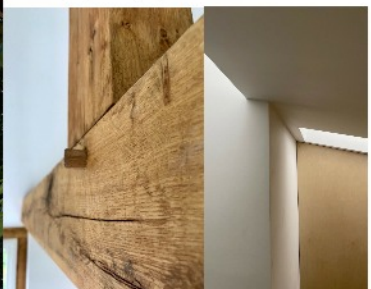
Architect with > 25 years of experience

M: 07967 817 327

www.benhebarchitecture.co.uk



ARCHITECTURE  
PLANNING APPS.  
BUILDING REGS.  
CONSTRUCTION



## Sound timber framing timberology.co.uk





Everything **Outside**

Bringing New Life  
To Your Garden

For A Quick Quote From A Company You Can Trust Call

☎ 01580 766 232 ☎ 07795 465 861

## Welcome To Everything Outside

We cover a wide range of services to meet the requirements of our ever-growing client list, if you are looking for a company you can trust to provide a high standard of quality work covering

- ✓ Gardening
- ✓ Garden Design
- ✓ Fencing
- ✓ Clearance
- ✓ Landscaping
- ✓ Hedge Cutting
- ✓ Tree Surgery
- ✓ Digger Work

and much more. Then call our experienced team today on 07795 465 861. To view our full range of services, click on the link below.

Our head office is based in Tenterden, Kent and means we are in the perfect location to proudly service Kent and East Sussex. All our services are tailored to each job we carry out and our team are experience in all aspects of fencing and landscaping services making us your number one choice for all work you require.

Great Work

Great Reputation

Great Price

## ERNACULAR HOMES

— design & build —



We work with homeowners and developers on new builds, barn conversions, renovations, restoration, remodelling and extensions.

Trust our experienced team to manage every step to bring your ideas or dream home to life.

[vernacularhomes.com](http://vernacularhomes.com) 01233 861177

## Karen Stevens

Massage and Reflexology

Massage and Reflexology from my treatment room in Woodchurch

To book or to discuss your treatment needs call me on:

☎ 07808675251

## OUR SPONSORS

# fab feet

Professional Foot Healthcare

[www.fabfeethealthcare.co.uk](http://www.fabfeethealthcare.co.uk)

Delivering high quality Podiatric care in the  
comfort of your own home.

Providing a reliable and friendly service of professional  
treatments for all of your foot ailments.

Call Michelle on:

**Tel: 01233 731207**

**Mob: 07766 705824**

Registered & Insured



*Remedial massage therapy.*

**Your Local Woodchurch Massage Therapist**

- Remedial Massage
- Sports Massage
- Holistic Massage

- Ultrasound Therapy
- Electrotherapy

- Injury Treatments & Rehabilitation
- Rehabilitation Taping/Strapping
- Athletic Taping/Strapping



**Bookings - 07799221043**

[www.musclewhisperer.org.uk](http://www.musclewhisperer.org.uk)

**Treatment Room - Little Vale TN26 3QW**



[musclewhisperer@outlook.com](mailto:musclewhisperer@outlook.com)



## WOODCHURCH COTTAGE FLOWERS



AN ARTISAN FLORIST & FLOWER GROWER, WE OFFER  
BOUQUETS, FAREWELL ARRANGEMENTS AND  
WEDDING FLOWERS.

ALL GROWN ON OUR SMALL HOLDING IN  
WOODCHURCH. WE WORK WITH NATURE AND THE  
SEASONS, NO CHEMICAL OR PESTICIDES USED

call or text 07960 449235

[www.woodchurchcottageflowers.co.uk](http://www.woodchurchcottageflowers.co.uk)





Weekly-  
Every Wednesday 10:00

Annexe Hall  
Woodchurch  
Kent  
TN26 3PB

# Yoga

Beginner Friendly  
Everyone Welcome



mindfulmeadowyoga.co.uk  
mindfulmeadow@yahoo.com

Drop in £10  
Preregister £8



## WOODCHURCH

SHOP ✨ BAR ✨ WINE TASTING ✨ TOURS

Thursdays to Sundays 11am - 5pm

<http://woodchurchwine.co.uk> tel:01233 860276

## KENT HOLIDAY COTTAGES

+44 (0) 1233 860 293

[info@kentholidaycottages.co.uk](mailto:info@kentholidaycottages.co.uk)

### DK Plastering Services

All plastering work carried out  
Fully Insured  
Professional Workmanship



For a clean & tidy job call David  
07974 891795  
[dk.plastering@hotmail.c.uk](mailto:dk.plastering@hotmail.c.uk)

You could advertise your company here  
from as little as £10 per month

Visit the HUB Web site for more information  
[www.woodchurchhub.uk/the-hub/newsletters/parish-newsletter-advertising/](http://www.woodchurchhub.uk/the-hub/newsletters/parish-newsletter-advertising/)

# Homecare you can rely on



Our local team of care professionals can help with:

- Meal Preparation
- Medication
- Personal Care
- Companionship
- Help around the home
- And much more...

To find out more call or visit:

01233 560400

[southkent@goodoakshomecare.co.uk](mailto:southkent@goodoakshomecare.co.uk)

[goodoakshomecare.co.uk/south-kent](http://goodoakshomecare.co.uk/south-kent)



**GoodOaks**  
Quality Care at Home



"Let your light shine..."



Woodchurch CE Primary School

OUTDOOR PLAY  
AND LEARNING

### WISH LIST

- ☐ Crates - wooden or plastic
- ☐ Briefcases / suitcases
- ☐ Foam pipe covers or pool noodles
- ☐ Clean guttering
- ☐ Hoses
- ☐ Metal pots / pans / trays
- ☐ Nets - fishing / cargo / football
- ☐ Pallets (no protruding nails)
- ☐ Plastic pipe
- ☐ Road barriers
- ☐ Traffic cones
- ☐ Plastic trugs or bins
- ☐ Rope
- ☐ Balance bikes
- ☐ Small wheelie bins
- ☐ Tarps
- ☐ Wooden blocks / cut offs



## The Importance of Play at Woodchurch Primary

At Woodchurch Primary, we believe play is at the heart of childhood, fostering creativity, resilience, problem-solving, and social skills. That's why we follow the principles of **OPAL (Outdoor Play and Learning)**, a nationally recognised approach that helps schools create high-quality play opportunities for all children. Through OPAL, we ensure that our pupils enjoy varied, imaginative, and adventurous playtimes in all weathers, with access to loose parts and natural materials that encourage exploration and teamwork.

To continue enriching our play provision, we are reaching out to our wonderful village community. If you have any spare items such as **crates, tyres, pipes, dressing-up clothes, kitchen utensils, or other loose parts**, we would love to give them a new life in our playground! Donations can be dropped off at the school office—your support will help make playtimes even more exciting and meaningful for our children. Thank you!

COMPASSION HOPE FORGIVENESS THANKFULNESS LOVE

## World Book Day at Woodchurch CEP

World Book Day at Woodchurch CEP was a fantastic celebration of the joy and power of reading! This year, our theme encouraged children to dress up as a 'word', sparking creativity and expanding vocabulary as pupils proudly showcased words like "precipitation," "camouflaged," and "creativity." The effort and imagination on display were truly inspiring!

One of the highlights was our Story in a Jar competition, where children brought their favorite books to life inside jars using figurines, drawings, and decorations. The entries were incredibly inventive, demonstrating just how much our pupils love reading and storytelling.

At Woodchurch CEP, we believe that reading is the key to unlocking the entire curriculum, fostering a love for learning, and opening doors to new worlds. World Book Day was a wonderful reminder of the pleasure and excitement that books bring, and we remain committed to nurturing a lifelong passion for reading in all our children.



# Simple Kent Funerals

caring • flexible • imaginative • economical • local

Applefield Cottage, Redbrook Street, Woodchurch TN26 3QS

Call Toby on 07806 613297 (24/7) • [www.simplekentfunerals.co.uk](http://www.simplekentfunerals.co.uk)





## **GIVE and TAKE Event**

**Saturday 5 April 10.00 – 12.00**  
**Outside the Church**

- Spring is here and we are sorting our gardens
- Have you plants or seeds to **SPARE** and **SHARE**?
- Bring them along and see what else you can find

**REFRESHMENTS AVAILABLE IN CHURCH**

*Growing our village beautiful together!*



Entry Forms now available from  
[www.woodchurchinbloom.com](http://www.woodchurchinbloom.com) or  
via Woodchurch HUB



**A DATE FOR YOUR DIARY**

# 19th July 2025

**on The Green** with Show exhibits in The Memorial Hall

**Incorporating Traditional Country Crafts and Displays**

The same categories as in 2023, so why not get growing & creating now!

All details are on the entry forms

## WoodchurchYardTogether (“WYT”)

Our next social gardening weekend in the  
Churchyard is:

# 12<sup>th</sup> & 13<sup>th</sup> April

**New to Woodchurch or new to ‘WYT’? .....  
Why not come along to meet us & enjoy a  
coffee & cake!**



Keeping in Touch:

Email:

[woodchurchYardTogether@btinternet.com](mailto:woodchurchYardTogether@btinternet.com)

Or follow us on Facebook



Search: ‘WoodchurchYard Together’

Registered CIC Charity

# Hug in a Mug

For those who have family members with dementia

**Monday 28th April**

**10.00-11.30am**

**Old Post Office  
Coffee Shop  
Woodchurch  
TN26 3PA**

**FREE tea, coffee &  
delicious cake**



Get in touch  
[clara@dementia-experience.com](mailto:clara@dementia-experience.com)

Find out more  
[dementia-experience.com](http://dementia-experience.com)