



WOODCHURCH COMMUNITY NEWS

The village community working together

November 2024

Contact us: Telephone 01233 861381 Email enquiries@woodchurchhub.uk Web www.woodchurchhub.uk

OVER 1,000 COPIES distributed every month in the Woodchurch area

WOODCHURCH Community Calendar



Weekly events:

Saturdays:

Boot Camp 9:00am-10:00am on the Village Green

Sundays:

Outpost Church 10:00am-12:00pm in the S&G Community Centre, Lower Road

Karate 10:00am-12:00pm in the Jean Mealham Centre

Mondays:

Pilates 9:00am-10:00am in the Memorial Hall

Tai Chi and Qigong 10:00am and 10:55am at the S&G Community Centre

Knit and Natter 2:00pm - 3:30pm in the Jean Mealham Lodge

Line Dancing 2:00pm - 4:00pm in the Jean Mealham Centre

Junior Tennis coaching Red-3:30pm, Orange 4:30pm, Green/Hand Ball 5:30pm, Hard Ball 6:30pm at the Tennis Club

Beavers 6:00pm-7:00pm in the S&G Community Centre

BodyTone 6:15pm-7:00pm in the Memorial Hall

BodyFlex 7:15pm-8:00pm in the Memorial Hall

Scouts 7:30pm-9:00pm in the S&G Community Centre

Tuesdays:

Pilates 9:00am-10:00am, 10:15am-11:15am and 6:00pm-7:00pm in the Memorial Hall

Yoga 10:00am-11:15am in the Jean Mealham Studio

Coffee Morning 10:00am-12:00pm in All Saints Church

Little Leaves Forest School 10:00am - 12:00pm under 5's Play Group based in Woodchurch

Puzzle Club 2:00pm-4:00pm in the Jean Mealham Lodge

Pizza Van 5:00pm-8:00pm in the Village Car Park

Cubs 5:30pm-7:00pm in the S&G Community Centre

Karate 7:00pm-9:00pm in the Jean Mealham Studio

Wednesdays:

Pilates 9:00am-10:00am in the Memorial Hall

Museum Volunteers - maintenance and gardening 9:30am-12:00pm at the Museum

Yoga 10:00am-11:15am in the Jean Mealham Studio

Social Pop-In 2:00pm-4:00pm Tea and coffee and boot fair marquee at the Jean Mealham Centre

Blend Youth Cafe 3:00pm-5:00pm in All Saints Church Term time only

Junior Tennis coaching Red/Orange-4:00pm, Green/Hard Ball-5:00pm the Tennis Club

Rainbows 5:00pm-6:00pm in the S&G Community Centre

Fish and Chips 4:30pm-7:30pm in the Village Car Park

Brownies and Guides 5:45pm-7:15pm in the S&G Community Centre

Previous editions of the Newsletter can be found on The HUB Web site www.woodchurchhub.UK

Thursdays:

Art Society 10:00am-1:00pm in the Memorial Hall

Margaret Morris Movement 2:15pm-3:45pm in the S&G Community Centre, Lower Road

BodyBlast 6:00pm-7:00pm in the Memorial Hall

Badminton 7:00pm-11:00pm in the Memorial Hall

Karate 7:00pm-9:00pm in the Jean Mealham Centre

Explorers 7:30pm-9:30pm in the S&G Community Centre

Fridays:

ZUMBA 9:30am in the Memorial Hall

Little Leaves Forest School 10:00am - 12:00pm under 5's Play Group based in Woodchurch

Squirrels 5:30pm-6:30pm in the S&G Community Centre

Adult Tennis coaching 5:30pm at the Tennis Club

Other Events:

Sun 3rd **Benefice Service Holy Communion** - 11:00am at All Saints Church

Mon 4th **Hi-Kent Hearing Aid Service** - 10:30am in the Memorial Hall
CARM - 10:30am in the Memorial Hall
When We Were Young - 10:30am in the Memorial Hall Annexe

WLHS - Nanny Goat Island - A Social History of Dungeness - 7:30pm in the Memorial Hall

Tue 5th **Evening Prayer** - 4:00pm at All Saints Church

Thu 7th **Social Prescribers** - 1:00pm to 4:00pm in The HUB

Sat 9th **Film Night - "One Life"** - 6:00pm in the Memorial Hall

Sun 10th **War Memorial and Remembrance Service** - 10:45am at the War Memorial and All Saints Church

Mon 11th **Dementia Coffee Morning** - 10:00am at The Coffee Shop

Tue 12th **WI - Silversmith** - 7:15pm in the Memorial Hall

Thu 14th **Citizens Advice** - 1:00pm to 4:00pm in The HUB

Sat 16th **Christmas Gift Market** - at the Rare Breeds Centre

Woodchurch Yard Together - All weekend at All Saints Church

Quiz Night - 7:30pm in the Memorial Hall

Sun 17th **Morning Worship with Baptism** - 11:00am at All Saints Church

Evensong - 4:00pm at All Saints Church

Mon 18th **When We Were Young** - 10:30am in the Memorial Hall Annexe

Tue 19th **Evening Prayer** - 4:00pm at All Saints Church

Sat 23rd **WI Christmas Market** - 10:00am-1:00pm in the Memorial Hall

Sun 24th **Benefice Service Eucharist** - 11:00am at All Saints Church

Mon 25th **PPG Meeting** - 6:00pm in the Memorial Hall Annexe

Tue 26th **Evening Prayer** - 4:00pm at All Saints Church

Thu 28th **Parish Council Meeting** - 7:00pm in the Memorial Hall Annexe

Sat 30th **Christmas Tree Switch On** - 3:00pm-6:00pm on the Village Green



All Saints Church



Dear Woodchurch Friends

Depending on when you read this, in about three weeks we will celebrate Christ the King, on the 24th November at 11:00 in All Saints Church. A week after that, on the 1st December, at 11:00 Morning Worship in All Saints, we will begin Advent, the four weeks before Christmas when we prepare for the coming of the Light of Jesus Christ into our world. Before these events in our calendar, we have three weeks of November. Traditionally, it is a time of year given to Remembrance.



On Monday 4th November we mark All Souls, with a service at 7pm in All Saints, remembering loved ones who have died. On Sunday 10th November we will mark Remembrance Sunday at the War Memorial and in All Saints, remembering people who have died through conflict. On the 11th November in our homes, schools, churches and in other private and public spaces, we will stop and be silent.

November is a time to grieve and to talk about grieving with people around us. It is a time to share memories.

The leaves falling in their autumn colours are reminders that life is slowing down. Trees and creatures enter a time of rest. Without this season of slowness and rest, creation is unable to burst into new life in the spring.

Perhaps we can pause, pick up an autumn leaf, and remember. Remember those we will always love and hold close to our hearts. Remember to go slowly, be restful and be with others we care about, supporting each other at this time.

The Light of Christ the King is coming into the world. As we look around our world, we are aware of spring emerging in the southern hemisphere. When the season of remembrance weighs heavy on us, perhaps try to look up towards the whole of the world, and be reminded that spring has sprung in the southern hemisphere, and it will here too.

Peace and prayers

Maria



Woodchurch Patients Participation Group (PPG)

Our next PPG meeting is Monday 25th November, 6pm in the Memorial Hall Annexe

All Woodchurch Surgery Patients welcome!

If you would like to receive PPG Surgery updates and details of speakers for the meetings, please contact Philippa at philippaatwoodchurch@btinternet.com

All Saints Church Fundraising Group

"O Christmas tree, O Christmas tree, how lovely are your branches"

We have been working hard to make sure that this is one Christmas you will never forget with our Christmas Tree Festival promising to be bigger and better than ever before. Do you know that we have people visit the festival from all over Kent and you have this right on your doorstep. However, like all things, putting a festival together like this takes money, time and effort - and this is where you can help us. We will do the main organising but we would like you to be a part of this village spectacular by sponsoring a tree, volunteering to help with refreshments and activities - or by simply by just telling your friends and coming along.



Christmas is a time to remember the past as well as look forward to the future. We can both reflect on those we have lost whilst also look hopefully towards the promise of a new year. Our Tree Festival is just one way of bringing light and hope into the world, and we also have a wide range of services aimed at every age group and situation, all over the festive period - from jolly carols to thoughtful reflection. All services, and of course the Tree Festival, will be advertised around the village. Come along and experience the real meaning of Christmas with us.

All Saints Woodchurch

**Craft Stall
Live Music
Refreshments
Raffle**

**CHRISTMAS
TREE FESTIVAL**

Come & see the Church looking spectacular filled with amazing Christmas Trees!

6th December 5pm-7pm
7th December & 8th December 10am to 5pm

*All trees decorated by our village groups!
Vote for your favourites!*

Visit Santa

Children's activities & Bell Tower open!



Woodchurch Pop-up Christmas Choir

Enjoy singing
and having
fun? Would you
like to be part of
our carol singers for this years
Christmas Tree Lighting Event and
our Church Christmas Tree Festival?

*Look out for the voting slips around the
Village for choosing your favourite Carols*

If you are interested in joining this fun group,
please email Woodchurchinbloom@hotmail.com

**Everyone (all ages)
welcome - only
requirement -
enthusiasm!**



Sunday Brunch

Let's have Brunch !!

Hamstreet Victory hall

Sunday 24th November 10-12
full English breakfast
£6.50 - unlimited tea , coffee & toast

All Welcome

Woodchurch Morris

Sad to report that Woodchurch Morris has closed its books, waved its last clout and jingled its last bell. Tenterden Folk Festival was, fittingly perhaps, our last day out, down to five dancers again and muddling along with some very welcome help. As with many sides we have found it very difficult to grow and replace lost numbers in sufficient quantity.



There are many people to thank; previous

members, fellow sides, dancers and musicians, pubs and publicans, event organisers and friends, far too many to mention individually. You know who you are.

We have an arrangement to put up a Christmas tree in the church which we shall honour, the bag shall go to The Pilgrim's Hospice in honour of our dearly departed fellow, we shall keep our Facebook page open as an archive and for contacts. The AGM we had last week was a rather sombre one with some of the usual disagreements, but also one tinged with jollity and we all agreed that over the years we have had the most tremendous fun.



Christmas Craft Fair

Hamstreet Victory Hall, TN26 2HU

Saturday 30th November 2024

10.30am - 4pm

Admission is free for shoppers

Handmade goods from local artisans and crafters

If you are looking for the perfect Christmas present or something for yourself, we are sure you'll find it here.

We will be serving lunches, cakes, teas and coffees.

Seasonal raffle

All proceeds will go to The Fitzroy Leo Trust, Boldshaves Oast, Woodchurch, a residential home for adults with special needs.

WOODCHURCH SURGERY UPDATE

That time of year has come back again for people to grow moustaches to promote "Men's Health Awareness" month. This has particular emphasis on men opening up about mental health struggles and prostate health but is also a call for all men to be open about exploring any health concerns that they have.

With Sir Chris Hoy, the Olympic cyclist, speaking out about his metastatic prostate cancer, the subject has spiked a massive interest in it. There is no official screening program for it in the UK so it is up to men to step forward and ask for testing. Generally, it is a disease that will occur as men get older and if we look hard enough most men in their 90's will have a small amount of it that will not cause any harm. We are really looking for high-risk people who may have aggressive disease - the risk factors for this are either Black ethnicity, Obesity or having a family history of prostate cancer in close family members in their 50s and 60s. If you are in one of those groups, I suggest we should now be doing some form of testing if you are over the age of 40, so please come and at least discuss it.



There is also a week raising awareness for pancreatic cancer. The urgent referral pathway criteria is for people age 60 and over with weight loss and any of the following: diarrhoea, back pain, abdominal pain, nausea, vomiting, constipation or new-onset diabetes. Most cases occur in the over 60s and are not inherited. The usual lifestyle risks such as smoking, alcohol and obesity will increase your risk. To find out more about it please look at pancreaticcancer.org.uk.

On November 2nd we are doing our last Flu and Covid mass vaccine clinic so any of you that have not had your vaccines will need to ring the surgery and book a routine appointment for them via reception. It has been a mission but well received and we appreciate the kindness and good humor that prevails on these Super Saturdays.

We are pleased to announce that our trainee, Dr Joseph Ebbrell, has passed his final training exam and is in the process of getting the paperwork sorted out to be a fully-fledged GP. He is likely to be with us until mid-December so please make the most of his time with us! Our 2nd Year Trainee, Dr Parissa Tarannum, has been looking very ready to start her maternity leave and we all have our fingers crossed for her.



With best wishes on behalf of the Surgery, Jack Hickey, GP
www.woodchurchsurgery.co.uk 01233 860236

Margaret Morris Movement Gentle exercise classes will continue as normal on Thursdays at 12:15 pm in the Scout and Guide Community Hall

Surgery Opening Hours


Monday to Friday 9am to 5pm

 **invisalign**



Where to find us...

Hamstreet Dental Clinic
 Warehorne Road
 Hamstreet
 Kent TN26 2JJ

 Find us on facebook



**Hamstreet
Dental Clinic**
 Welcomes You



Tel: 01233 733848
 Email: hamstreetdentalclinic@gmail.com



WI Christmas Market

Saturday 23rd November
The Memorial Hall
10:00am-1:00pm
 Your Christmas Presents Sorted:
 there will be a
 wide variety of craft items to buy,
 Including:
 Italian tops and Jumpers
 Hand-crafted Wooden Items
 Throws
 Playmats
 Presents for Pets
 Knitted Toys
 3D Printed Items
 Also: Competitions - Cake Stall - Tombola
 Books - Pre-loved Items
 Refreshments

Would you like a table?

....then hurry! We only have two table spaces left. Contact
 Josie.07503 585957

Woodchurch Village Shed

Just a quick update on our progress and other news.

With luck and a fair wind all the insulation and cladding will be in place by the end of next week and we can get 2nd stage of electrics completed. We will then be in the position to start building the work benches. We are nearly a proper Shed.



I want to take the opportunity to say thank you to Ace Sheds for their support, it is much appreciated. Also thanks to a few people in the village who have offered both wood and tools. They will be put to good use and help benefit both Shed members and hopefully add to the value in the village.

We are starting to build quite an exciting membership who are both helping get the Shed ready and others offering support. If you are over 18 and want to come along on a Thursday from 10am to 1pm please feel free. It is £3 a session.

Also if anyone in the village wants to make a donation to help us with our project, please contact me at neilmckay0730@gmail.com. I will keep you all posted on our progress.

WOODCHURCH REMEMBERS



As autumn takes hold and we tidy out gardens for the coming winter the annual Remembrance events also loom. On 11/11/1918 the guns finally fell silent at 11am marking the end of The Great War.

The names of the twenty-five men from this parish who died in that war are engraved on the Woodchurch War Memorial at All Saints Church along with eleven from WW2. In both wars a great sacrifice for the smaller village Woodchurch then was. If you are interested in this piece of village history please look at <https://www.roll-of-honour.com/Kent/Woodchurch.html> for more detail.

On Sunday 10th November Woodchurch Remembers will assemble outside The Six Bells from 10am, military veterans wishing to join us are very welcome. We will lead the procession to the War Memorial at 10:45.

At the memorial all wishing to lay a wreath should please come forward and simply stand at the front ready to lay in an orderly fashion. Following the ceremony at the memorial I hope you are able to join us in church for the annual Remembrance Service.

Don Grant

For membership enquiries please call Don on [07796 228212](tel:07796228212).



Remembrance Day 2014, RBL members gather at the new bench. How time flies!

CHRISTMAS with **WOODCHURCH IN BLOOM** INCORPORATING **WOODCHURCH GARDENING SOCIETY**

Create an Elf door!
A fun and festive craft for any age.

★ **Make a Christmas Elf door using any materials you can find outside.**

Top tips:

- ★ You can use tree bark, sticks or moss to make it!
- ★ Or you can buy one pre-made from shops!

★ **Paint your door to make it festive.**

★ **Place your door anywhere around the village for others to find!**



Citizens Advice Bureau At Woodchurch HUB

Ashford Citizens Advice now holds regular, confidential consultation clinics at Woodchurch HUB on the 2nd Thursday of each month from 1pm to 4pm.

These are walk-in sessions so you do not need to book.
For more information please contact The HUB.

Items For Future Newsletters

If there is something that you would like to have included in future editions then please send them to:
enquiries@woodchurchhub.uk



The Windmill

The committee responsible for the windmill at Ashford Borough Council has decided to recommend to dispose of the asset at the next Cabinet meeting. Their preferred method is for sale by auction, which is anticipated to take place in the first quarter of next year. In the meantime, The Parish Council has applied to have the mill registered as an Asset of Community Value (ACV).



What does this mean?

This would provide a 6 month period for the community to arrange the necessary funding to purchase the windmill on the open market or match the sale price agreed at the fall of the auction house hammer. This of course would all be subject to sufficient parishioner support.

It needs to be made clear that the current owners have allowed the mill to fall into a state of disrepair, and that a great deal of remedial work would be required by any prospective buyer to bring the mill back to its Grade II* listed status.

If you have any comments please contact the Clerk.

The HUB Public Loo

Work on refurbishing the public loo at the rear of The Hub is anticipated to commence the first week in December.



While the work is being carried out two portable loos will be provided and situated on the car park. These will be serviced on a weekly basis.

Please bear with us while the work is carried out, and we apologise for any "inconvenience".

Waiting Restrictions Proposed Amendments at The School

Kent County Council has not received any objections to the proposed amendment, and therefore the changes will take place. The Parish Council has not been informed as to when they will come into effect. In response to the Parish Council's enquiry, Kent County Council has informed us that once the new waiting restrictions are in place it will be handed over to Ashford Borough Council and the police to enforce them.



Allotments

The Parish Council is investigating feasibility of allotments subject to the availability of land. There has been some interest already, however if anyone has any interest, or any if you are a land owner willing to provide space for allotments, could you contact the Clerk



Potholes

As we slip into the winter months further potholes are likely to develop as the weather deteriorates. As a reminder please report any directly to KCC Highways by phone on 03000 418181, www.kent.gov.uk/roads-and-travel/what-we-look-after/roads/potholes



Water leaks

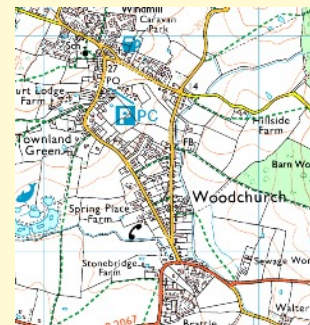
If you see a water leak in the road these should be reported to South East Water by phone at 03330 000365 or online at www.southeastwater.co.uk/help/emergencies/report-a-leak



How's The Village Plan Looking?

The Parish Council is making good progress in delivering most of the objectives as laid out in The Village Plan. With the addition of the new Councillors more of these will become more achievable.

The Council continues to ensure that, where it can, the village is maintained in good order. Following some complaints of overflowing bins, new larger hooded bins have been ordered to replace some of the existing cast iron ones.



The Parish Council has begun exploring ways to better engage with the younger members of the community. Whereas this is at a very exploratory stage at present, one of the options being looked into is the creation of a youth council, and any feedback would be welcome.

Village Green Car Park - Power upgrade to The HUB

The preliminary conduit has now been installed across the car park. There will be the loss of a few parking spaces as we now wait on the UK Power Networks sub-contractor to lay the actual cable. A precise day has yet to be set by UKPN but this is likely to take place in November.

In the meantime the internal electrics in the hub will be rearranged in preparation for the eventual switchover to hopefully be as seamless as possible.

Village Pump

The listed water pump is due to get some TLC, listed consent has finally been given, however there are some loose ends to clear up with the conservation officer over appropriate materials before this work will be carried out.

Funding

The Parish Council continues to look at ways to support to local community groups and businesses. From time to time we have access to funding that would not normally be directly available to your organisation. As an example Rural Green Business Grants of up to £5,000 and up to £15,000 are available at Ashford Borough Council. Visit www.ashford.gov.uk/repf



The next Parish Council meeting
is at 7pm on Thursday 28th November
in the Memorial Hall Annexe.

Second Quarter Financial Update

The Parish Council finances remain in a strong position. Second quarter receipts totalled £32,354, which was made up of £22,503 precept, £11,027 grant from Ashford Borough Council and the £1,794 VAT refund.

Running costs remain broadly around budget. The new website is now up and running, the overall cost came in 30% over budget, as an alternative provider, Netwise, had to be sought following 2Commune ceasing to exist. Contingency maintenance expenditure shows an 8% overspend, however this does not reflect the £425 contribution from a resident towards the cost of removing the tree at the rear of the sports pavilion.

Whereas overall payments increased to £18,057, this was largely due to the £11,108 payment in New Projects to engage UK Power Networks concerning the supply upgrade to the Hub building.

Total funds held in the bank at the end of September were £102,144.

After deducting earmarked reserves of £42,942 on New Projects, along with the remaining budgeted funds on Village Green Maintenance Agreement (£5,686), Running Costs (£9,822), and £7,890 in salaries, there will be a general reserve (for emergency spending) of around £34,803. This reserve is within the acceptable levels that would be required by a Parish Council of this size.

The budgeting process for 2025-2026 is due to commence very shortly.

Recent Planning Applications We Have Considered

Application	Location	Parish Council	Ashford Planning
AP-90667	CALA Homes	Object strongly due to potential flooding	Waiting Decision
PA/2024/1192	Orange Farmhouse, Brook Street	Support	Approved with Conditions
PA/2024/1429	3, Brattle, Woodchurch	Support	Approved with Conditions
PA/2024/1651	Oak Lodge, Susans Hill	Support	Waiting Decision
PA/2024/1859	Newlands, Redbrook Street.	Support	Waiting Decision
PA/2024/1795	Keepers End, Shadoxhurst Road	Support	Waiting Decision
PA/2024/1788	Swallows Barn, Boldshaves Lane.	Support	Waiting Decision
PA/2024/1772	37 The Green.	Object with additional correspondence to ABC	Waiting Decision
AP-90702 3351385	Balcony Farm, Haycross Lane.	Object	Waiting Decision

How to contact your Parish Council

In person: By talking to one of your councillors - details on the Parish Council Web site

By email: clerk@woodchurch-pc.gov.uk

By phone: 01233 861381 or 07793 807863

Through The HUB: Place your correspondence in a sealed envelope marked "Parish Council" and deliver to The HUB

By post to: Woodchurch Parish Clerk, c/o The HUB, Front Road, Woodchurch, Kent, TN26 2PA

Through the contact form on the Parish Council Web site: www.woodchurch-pc.gov.uk/contact-us/

	Budget	Earmarked	Payments	Remaining
Salaries	£ 16,970	£ 9,079	£ 7,891	
Councillor Costs	£ 1,000	£ -	£ 1,000	
Running Costs	£ 16,090	£ 6,268	£ 9,822	
Village Green	£ 7,040	£ 1,354	£ 5,686	
Power Upgrade to The Hub & Power to VG		£ 20,000	£ 9,257	£ 10,743
Bird and Bat Boxes		£ 500	£ -	£ 500
Toilet Revamp		£ 8,000	£ -	£ 8,000
Traffic		£ 3,000	£ -	£ 3,000
Environment		£ 500	£ -	£ 500
Pavilion Project, Play Area and Multi Surface Court		£ 9,600	£ -	£ 9,600
CCTV		£ 6,000	£ -	£ 6,000
Village Pump Restoration		£ 2,700	£ -	£ 2,700
Village Sign Restoration		£ 1,900	£ -	£ 1,900
Sub-Total	£ 41,100	£ 52,200	£ 25,958	£ 67,342
Total Budgeted Expenditure for 2024-2025	£ 93,300			
Total Budgeted Expenditure for 2024-2025 less Payments (A)				£ 67,342
Cash in Bank at 31st Sept 2024 (B)				£ 102,145
General Reserves (A-B)				£ 34,803

Have You Lived or Worked in Woodchurch for a Year or More?

Following the co-option of three new councillors to the Parish Council in September, there remains a vacancy to join a dynamic council, that has embarked on a number of exciting new projects.

If you are motivated in serving and helping your local community then this is an excellent opportunity. There are no formal qualifications required.

If you have any interest or questions then please email the Clerk.

At the October meeting of Woodchurch WI, the speaker, Peter Batty, described the multitude of changes undergone in home interiors throughout the centuries. Talking about flooring we were informed that Bull's blood was once used to make the surface harden. During the austerity of the interwar years rag latch hook rugs were common. Today they are becoming a household fashion accessory.

Beds, once made with straw mattresses led to sayings such as "hit the hay" and "mind the bugs don't bite". Thirteen layers of mattress, under-covers and blankets made hard work for the chamber maid. The Great Bed of Ware supposedly accommodated twelve persons.

The kitchen has always been the hub of the house, for cooking, warmth and conversations. The expression "every dog has its day" comes from the use of dogs to turn the roasting spit.

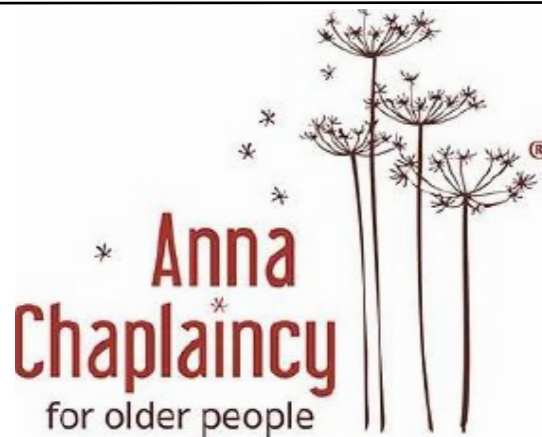
Arsenic, in 19th Century England was used safely in small doses of a diversity of household products, however when used in wallpaper and paint, which was not unusual, it was discovered that the green colouring was giving off toxic vapours causing not only illness but sometimes death. This was an interesting and well illustrated presentation.

The competition winners were 1st, Gillian with her framed owl tapestry, 2nd Nicole's Origami picture and 3rd was Joy's china owl sewing holder.



Please note change to advertised programme ** 12th November's meeting (7.15 in the Memorial Hall), will be Helen Sharp "On Being a Silversmith", Helen will have some of her pieces for sale. **

We look forward to seeing you there. Do look at our website: Woodchurchwi.weebly.com or our Facebook page, www.facebook.com/WoodchurchWomen'sInstituteEastKent



Dear Friends, Last Spring, All Saints set up a group called "When we were Young". This group was intended to help with memory loss. Something we all suffer from as we get older.

We would now like to extend this group to people who find themselves alone, isolated, bereaved or just in need of company now and again. An opportunity to share with like-minded people.

We will be meeting in the Memorial Hall annex in Woodchurch once a fortnight from 10:30 to 12:30. Our aim is to provide an atmosphere of friendship and peace a chance to chat with one another over croissants and coffee.

It would be helpful if we had some ideas of numbers so that we buy enough croissants.

If you are interested in joining, please let Rev Sue on [01233 820266](tel:01233820266) or Ann on [07754949111](tel:07754949111).

Dates up until Christmas are as follows:- 4th November, 18th November, 2nd December and 16th December.



CARM have a hearing aid clinic with Hi-Kent at their next meeting on Monday 4th November. We also have someone coming if from Age UK to talk about what they do and how they can help people with applying for items such as blue badges.

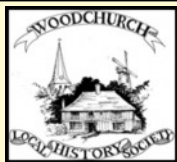


**Come & join others
who have family members
with dementia**



Monday 11th November
10am- 1130am
Old Post Office Coffee Shop
Woodchurch
TN26 3PA

The **Woodchurch Local History Society** generally meets on the first Monday of the month to hear a talk in the Memorial Hall at 7:30pm by an invited speaker. On Monday November 4th we have invited Keith



Swallow to tell us about 'Nanny Goat Island'. The term 'Nanny Goat Island' refers to Dungeness in the late 19th century when the local community was so isolated that their milk supplies came from the resident goat population. Indeed, the remoteness can be judged by the fact that beer supplies to the pub was by a horse drawn wagon crossing the shingle (see photo).



Keith Swallow has written a number of books about historical aspects of Romney Marsh life but his best book concerns the history of the Dungeness peninsula. In fact, speakers focusing on the Dungeness area are rare and we are lucky to have booked Keith.

We are delighted to welcome visitors, paying £3 at the door. There is no need to book - just turn up on the night. We are also looking to recruit new members.

After our December meeting we will gather again in February for our AGM and then in March will launch into our 2025 talks programme. If you would like to become a member the annual fee is £12.

Thank you.

Geoff, 01233 860393 (for more information)

WoodchurchYardTogether ("WYT")

Our next volunteer gardening weekend in the Churchyard is:

**16th & 17th
November**



Keeping in Touch:

Email:

woodchurchYardTogether@btinternet.com

Or follow us on Facebook



Search: 'WoodchurchYard Together'

TENTERDEN GARDEN CENTRE

**THUR 21st NOV
5.30PM – 8.30PM**

Christmas LATE NIGHT SHOPPING

**10% OFF ACROSS
THE STORE!**

**LARGE, FREE CAR PARK
COMPLIMENTARY FESTIVE
TREAT & DRINK***

**MUSIC TO SHOP BY WITH
THE DUKES OF SWING DUO**

TENTERDEN LIONS FLOAT

**CONDIMENTS &
PRESERVES
TASTING TABLE**

**FREE PRIZE DRAW TO WIN
£100, £50 OR £25**

GROVEWELL GARDEN CENTRE VOUCHERS

*18yr+ only. Alcohol free option will be available. One per person only

**GET A HEAD START
ON YOUR CHRISTMAS
SHOPPING**

*Eat, drink and
shop until late!*

**DINE
WITH
US**

*Table reservations
from 5.30pm*



APP EXCLUSIVE

**FREE CHIPS
OR WEDGES
WHEN YOU
PURCHASE
OUR
FESTIVE BAP!**

APPLEDORE RD, READING STREET, NR. TENTERDEN, KENT, TN30 7HT
CALL : 01233 758510 | INFO@TENTERDENGCC.CO.UK

☆☆☆ WWW.GROVEWELLGC.CO.UK ☆☆☆

Zumba with Hannah

Classes are on Friday mornings
at 9.30-10.30am, at the Memorial Hall
and run in term time only.

For more information contact Hannah on
zumbawithhannah@yahoo.com



HELP NEEDED AT THE HUB

The HUB is looking for volunteers to help support the community in The HUB office from 10am till 1pm. This could be every week, every two weeks or on our list of reserve volunteers. This is a good opportunity for you to help provide positive support to the community in a safe and sociable environment. No previous experience is necessary as full training and support will be given. The role isn't technical but a basic confidence using the Internet and email would be an advantage. The HUB team of volunteers is always available to assist and you will get to know a lot of new people from within the village - and beyond.



For more information please contact The HUB
enquiries@woodchurchhub.uk - 01233 861381

Chamber Vacuum Packer for sale

Henkleman Jumbo 42 commercial vacuum packer for sale.
Has only seen light usage and is in excellent condition **£700.**

The UK's best selling tabletop model is an all-stainless-steel machine and deep drawn vacuum chamber and a transparent lid.

Perfect fit for your everyday needs.
Right for home use, in small butchers, fishmongers, cafes, bars, restaurant and pubs.

Is it an easy-to-use machine, just place the food in a vacuum bag or vacuum pouch. Uses low cost chamber vacuum bags.

- Full stainless steel construction
 - Ideal for use in sous-vide cooking
 - Easy to clean and maintain with rounded chamber corners
 - 420mm seal bar
 - 016 m3/h Busch vacuum pump
- Latest new price online - £1,879

For more information contact Woodchurch Smokery on **07502 220653** or email wade@nashweb.net.

Free delivery within 15 miles of Woodchurch



Village Lost Property at The HUB

If you find any lost property around the village please bring it to The HUB. If you have lost something around the Village please let The HUB know as it may have been handed in.



20 years supporting the Woodchurch Community

It was in early 2004 when Mercy and Donald Thilagarjan first saw the advert for the sale of Townland Stores in an estate agent in Morden, London and it was in that November they moved in and took over running our village shop from Bertie. Following their move to the UK from Sri Lanka, Mercy originally developed her retail skills through the Safeway Supermarket chain and Donald through running the retail side of garage service stations. When they first took over Townland Stores they were the proud parents of four year old twin boys, Joshua and Joshia, and two years later they were joined by a younger brother Joash, all of who went to Woodchurch School. The family all love Woodchurch and its community and they were made to feel very welcome from the moment they arrived.



The shop was refurbished in 2014 and Mercy and Donald also took over the running of the village Post Office in May 2019.

It has not all been plain sailing though as the shop was ram-raided in 2006 with the thieves unsuccessfully attempting to steal the in-store cash machine. The damage was extensive and resulted in the shop having to close for almost two months whilst it was being repaired.

Since taking on the Post Office, like many other sub-post offices, they have had their issues with the Horizon system and other general challenges getting support from the Post Office - all of which they managed to overcome. Throughout the Covid lockdowns, Mercy and Donald continued to provide a lifeline to many in the community who were unable to go outside - always managing to supply many of the essential items that were often not available even in the large Supermarkets. Throughout that time they also offered a home delivery service to village residents - which they continue to offer today. If you would like information on getting home deliveries from Townland Stores then please contact Mercy on 07732 390480

The HUB would like to thank both Mercy and Donald for all they have done to support the village over the years and wish them continued success into the future.

Simple Kent Funerals

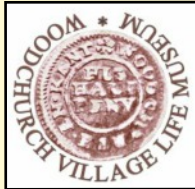
caring • flexible • imaginative • economical • local
Applefield Cottage, Redbrook Street, Woodchurch TN26 3QS

Call Toby on 07806 613297 (24/7) • www.simplekentfunerals.co.uk



WOODCHURCH VILLAGE LIFE MUSEUM

We are closed now until the beginning of April but can easily open by appointment if you have friends and/or relatives visiting. Three school classes and a group from East Kent WI enjoyed visits this past month.



Phone [01233 860586](tel:01233 860586) or email enquiries@woodchurchheritagetrust.uk

As you may have seen or heard we are starting our new 150 plus lottery draw from January 2025 at a cost of £20 for 12 months. Four numbers are allocated with the chance to win prizes of £50, £30 and £20 every month - with the winners announced in the community newsletter.

If you are not already a subscriber and wish to help support the Museum then here are some ways to pay. An acknowledgement and your numbers will be sent within a few days.

➤ **Cash** - Cash can be paid at The HUB (open Monday through Friday 10am to 1pm and Saturdays 10-12). Payments can also be made at 62, Lower Road, Woodchurch, Kent TN26 3SG. Please leave your name, address and email/phone number with the person on duty at the Hub or on an envelope if posting through either door.

➤ **Bank transfer (BACS)** - Bank: LLOYDS, Account Name: "Woodchurch Heritage Trust", Sort Code: 30-98-97, Account Number: 54888862. Please make sure that your name is clear in the reference section.

➤ **Cheque** - Cheques should be made payable to "Woodchurch Heritage Trust" and can be paid at The HUB. Payments can also be made at 62, Lower Road, Woodchurch, Kent TN26 3SG. Please leave your name, address and email/phone number with the person on duty at the Hub or on an envelope if posting through either door.

➤ **Home visit** - Reply to this email requesting that someone calls to collect your payment.

The museum costs over £7 000 a year to keep open with insurance, security, services and ongoing maintenance and conservation being the main expenses.

If you would like to make a donation to help support us then visit <https://woodchurchhub.uk/> and click on and select "Woodchurch Museum"



Please also consider leaving the Museum a legacy in your will to help support the Museum into the future. Anything you can do to help would be greatly appreciated.

WVLM Committee.

For more information contact us at enquiries@woodchurchheritagetrust.uk or phone [01233 860586](tel:01233 860586)

or visit our Web site www.woodchurchheritagetrust.uk



Bubbles & Bark

Mobile dog grooming service



From tiny terriers to giant great danes we groom them all! Enjoy convenient, stress-free grooming right at your doorstep. Your pup's perfect pampering awaits!

Full Groom

Hand stripping

Puppy Package

Teeth Cleaning

Pawsome extras also available!



Mobile: 07731 954485 Email: Bookings@bubblesandbark.co.uk

Website: bubblesandbark.co.uk Instagram: [bubblesandbarksocials](https://www.instagram.com/bubblesandbarksocials)

TENTERDEN GARDEN CENTRE

TO BOOK YOUR GROTTO EXPERIENCE PLEASE VISIT BOOKFATHERCHRISTMAS.CO.UK/TENTERDEN

Father Christmas's GROTTO

Pre-booking is essential

Visit Father Christmas in his elf-built grotto EVERY WEEKEND from 16th Nov until 24th Dec.
Entry £12.50 per child, includes magical Christmas tree experience and age-appropriate gift
BOOKING REQUIRED

SEN GROTTO OPENING

WE BELIEVE CHRISTMAS SHOULD BE FUN, SAFE AND MAGICAL FOR ALL.

This year for SEN children and their families we are offering grotto visits between 10am - 3.30pm
Sunday 17th November and 9am - 10am Saturday 7th & Monday 16th December, sessions are marked gold in the booking system. BOOKING REQUIRED



Limited weekday sessions are available! See the booking engine for further details

APPLEDORE RD, READING STREET, NR. TENTERDEN, KENT, TN30 7HT
CALL : 01233 758510 | INFO@TENTERDENGCC.CO.UK
☆☆☆ WWW.GROVEWELLGC.CO.UK ☆☆☆

Twin Oaks

Your Local Handy Man & Gardening Services

Gardening Services



Mowing/ Strimming
Hedge Cutting
Weeding
Fencing/ Fence Maintenance
General Clearance



Bespoke Garden Features (*Pergolas, Bird Feeders, Dove Cotes etc.*)

Household Odd Jobs

For all those little jobs that keep cropping up.
We can sort them!

Wood Processing / Log Splitting Services

Tractor operator and log splitter available for small or large scale jobs.

Contact us today for a FREE consultation

07960991399

twinoaksagriservices@outlook.com

WOODCHURCH COTTAGE FLOWERS



AN ARTISAN FLORIST & FLOWER GROWER, WE OFFER BOUQUETS, FAREWELL ARRANGEMENTS AND WEDDING FLOWERS.

ALL GROWN ON OUR SMALL HOLDING IN WOODCHURCH. WE WORK WITH NATURE AND THE SEASONS, NO CHEMICAL OR PESTICIDES USED

call or text 07960 449235

www.woodchurchcottageflowers.co.uk



Architect serving Kent & East Sussex

M: 07967 817 327

www.benhebararchitecture.co.uk



ARCHITECTURE
PLANNING APPS.
BUILDING REGS.
CONSTRUCTION



You could advertise your company here
from as little as £10 per month

KENT 
HOLIDAY COTTAGES

+44 (0) 1233 860 293

info@kentholidaycottages.co.uk



WOODCHURCH

SHOP ✿ BAR ✿ WINE TASTING ✿ TOURS

Thursdays to Sundays 11am - 5pm

<http://www.woodchurchwine.co.uk> tel:01233 860276

To help keep the Newsletter free for the village please become one of our sponsors, or give a donation if you can.

www.woodchurchhub.uk or contact The HUB

Country
CHRISTMAS

WITH ERNEST DOE POWER... YOUR LOCAL COUNTRY STORE

Hendon Barn, Woodchurch,
Ashford, Kent TN26 3QP
Tel: 01233 224860

ernestdoeshop.com

 **ernestDOE**
POWER

Everything **Outside**

Bringing New Life
To Your Garden

For A Quick Quote From A Company You Can Trust Call

☎ 01580 766 232 ☎ 07795 465 861

Welcome To Everything Outside

We cover a wide range of services to meet the requirements of our ever-growing client list, if you are looking for a company you can trust to provide a high standard of quality work covering

- ✓ Gardening
- ✓ Garden Design
- ✓ Fencing
- ✓ Clearance
- ✓ Landscaping
- ✓ Hedge Cutting
- ✓ Tree Surgery
- ✓ Digger Work

and much more. Then call our experienced team today on 07795 465 861. To view our full range of services, click on the link below.

Our head office is based in Tenterden, Kent and means we are in the perfect location to proudly service Kent and East Sussex. All our services are tailored to each job we carry out and our team are experienced in all aspects of fencing and landscaping services making us your number one choice for all work you require.

Great Work

Great Reputation

Great Price



Design, planning & build services

Now offering full 3d design development for your extension, new build or conversion project.

Please call us for an introduction to our design services at our Woodchurch office.

01233 861177 vernacularhomes.com



Karen Stevens

Massage and Reflexology

Massage and Reflexology from my treatment room in Woodchurch

To book or to discuss your treatment needs call me on:

☎ 07808675251

OUR SPONSORS

fab feet
Professional Foot Healthcare

www.fabfeethealthcare.co.uk

**Delivering high quality Podiatric care in the
comfort of your own home.**

Providing a reliable and friendly service of professional
treatments for all of your foot ailments.

Call Michelle on:

Tel: 01233 731207

Mob: 07766 705824

Registered & Insured



Remedial massage therapy.

Your Local Woodchurch Massage Therapist

- Remedial Massage
- Sports Massage
- Holistic Massage

- Ultrasound Therapy
- Electrotherapy

- Injury Treatments & Rehabilitation
- Rehabilitation Taping/Strapping
- Athletic Taping/Strapping



Bookings - 07799221043

www.musclewhisperer.org.uk

Treatment Room - Little Vale TN26 3QW



musclewhisperer@outlook.com



ARCHITECTURAL C.A.D. DRAFTING SUPPORT NEEDED

Senior Architect in Woodchurch, Kent looking for part time services of a Proficient Architectural CAD Drafts Person to convert hand drawn Architectural Drawings into Council, Submission and Construction Drawing standard.

Contact Tony Whitfield - mca@mcaarchitects.co.za
or 07956794166



YOU DREAM IT, WE PLAN IT

Travel is more than just reaching a destination; it's about creating memories that last a lifetime.

Here to take the stress away by organising the perfect trip for you. For all your travel needs from beach holidays, city breaks, business travel, tailor-made, sporting trips, tours, cruises and everything in between.

Contact me, Eleanor, your local agent for inspiration.

✉ eleanor@travologytravel.co.uk

☎ 07772 710 996

🌐 www.travologytravel.co.uk/eleanor

👍 Travology-Travel-with-Eleanor

📧 [travology_travel_with_eleanor](https://www.facebook.com/travology_travel_with_eleanor)



QUIZ QUIZ QUIZ Memorial Hall

Saturday 16th November

7.30p.m

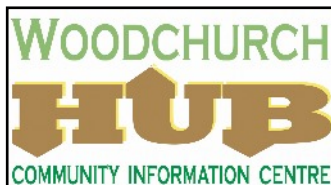
Bring your own refreshments.

Tables up to 6 persons £5 per person

A prize for the winning team.

Raffle and Bar

To book a table ring Joy on 861483



Make A Difference



Our local team of care professionals can help with:

- Meal Preparation
- Medication
- Personal Care
- Companionship
- Help around the home
- And much more...

To find out more call or visit:

☎ **01233 560400**

@ southkent@goodoakshomecare.co.uk

🌐 goodoakshomecare.co.uk/south-kent



GoodOaks
Quality Care at Home

Sound timber framing timberology.co.uk





Peter New (peternew1@aol.com)
Community Neighbourhood Watch

THE THEFT OF INTERNET SHOPPING PARCELS & PACKAGES FROM OFF OF HOUSEHOLD DOORSTEPS and COURIER FRAUD.

Courier Fraud is where a package is delivered to your property and moments later a person calls saying the delivery was made in error. Only when a bill later arrives do people realise, they have been a victim of crime.

This risk has developed over a period of 2 to 3 years and was fuelled by the arrangements to operate safely as COVID restrictions relaxed.

1. The theft of a parcel from a doorstep mainly in town areas where there is foot traffic by a "Chancer and opportunists" Sometimes the thief had no intention of committing the crime but there was a parcel and then it was gone!

2. Criminals then developed a more serious approach, and vans were now followed that risks grew around the time of Black Friday sales and of course Christmas as more and more online shopping took off.

It also now brought into play more rural and isolated premises so no property off the beaten track was safe now

3. Then we had vans taken as delivery drivers went to premises and the criminals were frustrated that many deliveries were being accepted by residents and so when the opportunity arose, they stole the complete van and all deliveries inside.

4. Sadly, and I have no in-depth details yet, but a delivery van driver was killed recently in the North of England as criminals tried to take the van and the driver was killed as the van drive off.

We must encourage safe delivery arrangements.



Parcel thefts rise from doorsteps as gangs follow courier vans



A vital piece of work I am supporting with Neighbourhood Watch is the Police Crime Commissioners, Matthew Scott, Survey for policing priorities in coming years.

The views of residents are needed as to what are your concerns and what are the crime trends that concern you.

These are built into the Commissioners Plan and hold the Chief Constable to account with regular Quality Assurance and Performance Indicator Reviews of the items in the plan.

This survey gives residents the opportunity to say what they feel are the crime issues and what should be the police priorities in coming years.

The link is below and please could I ask that residents make a response.

<https://www.smartsurvey.co.uk/s/PoliceandCrimePlan2024/>

CONCERNS OVER E-SCOOTERS AND A DEVELOPING FIRE RISK IN COMMUNITIES

London Fire Brigade - 19 Jul 2024

Did you know, we attend an e-bike or e-scooter fire roughly every 48 hours?

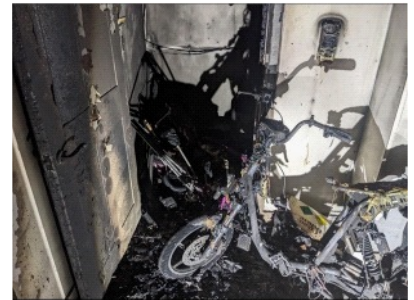
Whilst e-bikes and e-scooters offer a great way round the city, if the batteries become damaged or begin to fail they can start incredibly ferocious fires within seconds.

We were very pleased to see the Product Safety and Metrology Bill in the King's Speech this week, which we hope will ensure better product regulation of devices such as these.

The majority of fires related to e-bikes and e-scooters have happened in homes, often caused when charging batteries, and sometimes charged in areas blocking escape routes.

Many of these fires are caused by incompatible chargers, modifications to e-bikes, or faulty or counterfeit products which are purchased online. This includes chargers, lithium batteries and conversion kits for e-bikes.

Here are some photos from incidents we have attended, showing the extent of the devastation that e-bike and e-scooter fires can leave in their wake.



Crews are reminding people to be careful when charging electrical items, after an electric bike caught fire in Maidstone

Here's some top tips on electrical safety:

- Try not to leave items charging overnight or if you leave the house
- Use recognised and recommended chargers and charging leads
- Don't use damaged charging cables
- Avoid over-charging items and over-loading plug sockets
- Purchase electrical items from reputable suppliers
- Place charging items on a non-flammable surface





The Northern Lights across Woodchurch Village Green
October 10th 2024 - 9:45pm



*Please join
us in
celebrating*

Woodchurch on The Green
**CHRISTMAS
TREE
LIGHTING CEREMONY**

Join in with our Carol Singers

Something for the whole family including our

CHRISTMAS MARKET

Saturday, 30th November 2024

3pm 'til 6pm (Tree switch on 5pm)

ON THE GREEN AND IN THE CAR PARK

WOODCHURCH FILM SOCIETY PRESENT



SATURDAY 9th NOVEMBER 2024

WOODCHURCH MEMORIAL HALL 6PM FOR 6.30 START

TICKETS £20

INCLUDES FISH AND CHIP SUPPER (Licensed Bar/Raffle)

TICKETS AVAILABLE FROM: www.ticketsource.co.uk

Or WOODCHURCH HUB—01233 861381