



# WOODCHURCH COMMUNITY NEWS

*The village community working together*

February 2024

Contact us: Telephone 01233 861381 Email enquiries@woodchurchhub.uk Web www.woodchurchhub.uk

**OVER 1,000 COPIES distributed every month in the Woodchurch area**

## WOODCHURCH Community Calendar



### Weekly events:

#### Saturdays:

**Boot Camp** 9:00am-10:00am on the Village Green

#### Sundays:

**Outpost Church** 10:00am-12:00pm in the S&G Community Centre, Lower Road

**Karate** 10:00am-12:00pm in the Jean Mealham Centre

#### Mondays:

**Pilates** 9:00am-10:00am in the Memorial Hall

**Tai Chi and Qigong** 9:45am and 10:45am at the S&G Community Centre

**Knit and Natter** 2:00pm - 3:30pm in the Jean Mealham Lodge

**Line Dancing** 2:30pm - 4:30pm in the Jean Mealham Centre

**Junior Tennis Coaching** 3:30pm on the tennis courts

**Beavers** 6:00pm-7:00pm in the S&G Community Centre

**BodyTone** 6:15pm-7:00pm at the Memorial Hall

**BodyFlex** 7:15pm-8:00pm at the Memorial Hall

**Scouts** 7:30pm-9:00pm in the S&G Community Centre

#### Tuesdays:

**Pilates** 9:00am-10:00am, 10:15am-11:15am and 6:00pm-7:00pm in the Memorial Hall

**Yoga** 10:00am-11:15am in the Jean Mealham Studio

**Coffee Morning** 10:00am-12:00pm in All Saints Church

**Little Leaves Forest School** 10:00am - 12:00pm under 5's Play Group based in Woodchurch

**Puzzle Club** 2:00pm-4:00pm in the Jean Mealham Lodge

**Cubs** 5:30pm-7:00pm in the S&G Community Centre

**Karate** 7:00pm-9:00pm in the Jean Mealham Studio

#### Wednesdays:

**Pilates** 9:00am-10:00am in the Memorial Hall

**Museum Volunteers** - maintenance and gardening 9:30am-12:00pm at the Museum

**Yoga** 10:00am-11:15am in the Jean Mealham Studio

**Over 60s Pop-In** 2:00pm-4:00pm Tea and coffee and boot fair marquee at the Jean Mealham Centre

**Fish and Chips** 4:30pm-7:30pm in the Village Car Park

**Rainbows** 5:00pm-6:00pm in the S&G Community Centre

**Brownies** 5:30pm-6:45pm in the S&G Community Centre

**Guides** 6:00pm-7:20pm in the S&G Community Centre

Previous editions of the Newsletter can be found on The HUB Web site [www.woodchurchhub.UK](http://www.woodchurchhub.UK)

#### Thursdays:

**Art Society** 9:30am-12:30pm at the Memorial Hall

**Margaret Morris Movement** 2:15pm-3:15pm in the S&G Community Centre, Lower Road

**BodyBlast** 6:00pm-7:00pm on the Memorial Hall

**Karate** 7:00pm-9:00pm in the Jean Mealham Centre

#### Fridays:

**Little Leaves Forest School** 10:00am - 12:00pm under 5's Play Group based in Woodchurch

**Adult Tennis Coaching** 5:30pm on the tennis courts

#### Other Events:

Thu 1<sup>st</sup>

**Social Prescribers** - 1:00pm-4:00pm at The HUB

Fri 2<sup>nd</sup>

**Music at The Bonny** (Concrete Igloos) - 8:30pm

Sat 3<sup>rd</sup>

**Woodchurch Yard Together** volunteer weekend at All Saints Church

Sun 4<sup>th</sup>

**Morning Worship** - 11:00am at All Saints Church

Mon 5<sup>th</sup>

**WLHS AGM** - 7:30pm in the Memorial Hall

Wed 7<sup>th</sup>

**BCP Holy Communion** - 12:00 at All Saints Church

Thu 8<sup>th</sup>

**Citizens Advice** - 1:00pm-4:00pm at The HUB

Sat 10<sup>th</sup>

**School "Fix it day"** at Woodchurch School

Sun 11<sup>th</sup>

**Holy Communion** - 11:00am at All Saints Church

**Music at The Bonny** (Thomas Abrahams) - 6:00pm

Tue 13<sup>th</sup>

**WI - Annual Meeting** - 7:15pm in the Memorial Hall

Sun 18<sup>th</sup>

**Morning Worship** - 11:00am at All Saints Church

**Evensong** - 4:00pm at All Saints Church

Wed 21<sup>st</sup>

**Quiz Night at the Six Bells** - 7:00pm at The Six Bells

Thu 22<sup>nd</sup>

**Parish Council Meeting** - 7:00pm in the Memorial Hall

Sun 25<sup>th</sup>

**Holy Communion** - 11:00am at All Saints Church

Mon 26<sup>th</sup>

**PPG Meeting** - 6:00pm-7:30 in The Annexe

The Full Community Calendar can be found at [www.woodchurchhub.uk/community-calendar](http://www.woodchurchhub.uk/community-calendar)



### Woodchurch Museum opening and Action Day

Woodchurch Museum opens its doors for the 2024 season on Friday 29<sup>th</sup> March. To help get ready for the opening we will be holding an "Action Day" on Wednesday 6<sup>th</sup> March from 9:00am at the Museum. Although the maintenance team have been working throughout the winter, we now need to get the exhibition area and grounds ready for the public.



For more information contact Gina or Joyce through The HUB



**Potholes.** As much as the parish council would like to be able to resolve the ongoing pothole issue throughout the parish, unfortunately potholes remain outside our remit, and remain the responsibility of Kent

County Council Highways department. Whereas we can support your complaints by reporting their locations, it is necessary for you to report them to Kent County Council Highways too. The more residents that report them as soon as they appear, the better the chances they get repaired.

You can report potholes online at:

<https://webapps.kent.gov.uk/KCC.KHSFaultsGIS.Web.Sites.Public/SelectSearchMethod.aspx>

Or by phone on **03000 418181**



**Litter Bins.** Could we please request residents to refrain from emptying ash from their fireplaces into the bins. This causes large clouds of dust when the bins are emptied and is unpleasant for your litter collectors. Also, after rainfall, the sodden ash becomes

exceedingly heavy and causes the blue insert bags to split on lifting them out of the bins. Thank you for your understanding and co-operation.

While on the subject of bins, I would just like to remind everyone that leaving bags of any type of rubbish by litter bins, is considered as fly tipping which can carry a hefty fine.



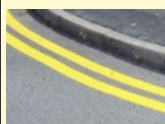
#### **Budget and Your Precept For 2024-2025.**

After a long discussion at January's meeting, The Parish Council agreed the budget for the 2024-2025 financial year, and as a result the parish precept will not be increasing over last year's figure.

The council debated at length the requirements that the residents had prioritised in the recent village consultation, and projects have now been identified to meet those needs. Some of the projects will require long term planning given their size and scope.

One of the immediate objectives will be to provide electricity onto the village green, which will involve upgrading the power supply to The Hub. This would then provide power for future events that are held on the green, such as lighting the Christmas tree.

In addition, it was agreed to budget for updating and improving the public convenience.



**Yellow Lines.** In response to the demand for having yellow lines installed on the road near the school and around the vicinity of the

Townland village store, the council has set aside some funds to cover the cost of carrying out monitoring at these locations. Unfortunately, the procedure

is very long-winded, and there are several hoops to jump through beforehand. A Highways Improvement Plan will be required to be drawn up first.



**Play Area and Pavilion.** Another of the projects identified in the survey, was the desire to have the play area updated along with the

pavilion. Clearly this is quite a sizeable undertaking and will extend over several years. In the meantime, the parish council will carry out a feasibility study and have plans drawn up for residents to comment on at a later stage.

**CCTV.** The survey also revealed a request for CCTV to be present on the car park and the green. In response the council has now agreed on funds for CCTV to be installed on The Hub building and the pavilion.



**Village Pump and Village Sign.** We have budgeted for the renovation of the village sign and the pump, both of which are in need of attention, in particular the latter. However, the pump is a listed structure, and will require Listed Building Consent and likely planning permission before any work on it would be

allowed to commence.

**Environment.** It was also agreed to allocate some funds in the budget to meet certain environmental and wildlife enhancements.

#### **A Date for Your Diary Saturday 23<sup>rd</sup> March 2024.**



**A Recycle and Repair** shop is planned to be held on Saturday 23<sup>rd</sup> March at The Memorial Hall Annexe. This will run from 10am until 4pm. This has been organised by Ashford Borough Council, where residents can take their old electrical items for repair or recycling. I will post further details on social media and the noticeboards once I have them.

#### **Vacancies For Two Councillors.**



There are currently two vacancies open to become parish councillors. No prior experience is required, and this is a great opportunity to be a member of a dynamic council about to embark on some new and interesting projects.

Please contact the Clerk on [clerk@woodchurch-pc.gov.uk](mailto:clerk@woodchurch-pc.gov.uk), or one of the current Councillors whose details are available on the website ([www.woodchurchhub.uk/parish-council/](http://www.woodchurchhub.uk/parish-council/))

#### **Parish Council meetings**

The next Parish Council meeting will be held on **Thursday 22<sup>nd</sup> February 7:00pm in the Memorial Hall Annexe.**

All Parish Council meetings are open to the public. We are here to support the village and so it is important that you let us know the things that are important to you



## How to contact your Parish Council

**In person:** By talking to one of your councillors - details on the Parish Council Web site

**By email:** [clerk@woodchurch-pc.gov.uk](mailto:clerk@woodchurch-pc.gov.uk)

**By phone:** 01233 861381

**Through The HUB:** Place your correspondence in a sealed envelope marked "Parish Council" and deliver to The HUB

**By post to:** Woodchurch Parish Clerk, c/o The HUB, Front Road, Woodchurch, Kent, TN26 2PA

**Through the contact form on the Parish Council Web site:** [www.woodchurchhub.uk/parish-council/](http://www.woodchurchhub.uk/parish-council/)

## Upcoming roadworks in and around Woodchurch Information from KCC and one.network

### **Road Closed - Moor Lane, Brook Street**

**5<sup>th</sup> - 6<sup>th</sup> February 2024**

Closure in force: Road Closed

Description: UK Power Networks

### **Road Closed - Redbrook Street**

**19<sup>th</sup> - 21<sup>st</sup> February 2024**

Closure in force: Road Closed

Description: South East Water Utility Repair



**How to report highway problems including potholes, streetlights and broken signs**

[www.kent.gov.uk/highways](http://www.kent.gov.uk/highways)

## 1st Woodchurch Scout Group

We have Beavers from 6pm to 7pm. Mondays  
We have Cubs from 5:15 to 7:15 on Tuesdays  
We have Scouts from 7:30 to 9pm on Tuesday



We have a new section which is Squirrels but we cannot start this section up until we find a leader. If you have any time, please contact Julian West on 07887 748692.

Squirrels will run from 5:30 to 6:30 on Mondays. Squirrels are for both boys and girls from 4 to 6 years of age.

## Woodchurch Rainbows, Brownies and Guides

### **Rainbows. and Brownies.**

For girls ages 4 till 10 why not come and join us make new friends, have fun and learn new skills.

We have immediate vacancies in Brownies and vacancies in Rainbows from April.

### **Guides.**

If you are aged 10 to 14 why not come and join us at our earlier running time from 6 till 7.20 (later in summer months). Come with ideas of what you would like to learn or do Campfires, Cooking, Craft, Games and make new friends.

# Woodchurch Dog Safety

## Stay Safe & Enjoy Walks



- If your dog won't come back when called (with or without distractions present) they should not be off lead until fully trained. Use a lead or long-line to provide freedom while maintaining safety on walks.



- Everyone deserves to have their personal space respected. Never allow your dog to approach other people, livestock or dogs without consent. It doesn't matter if your dog is "friendly". Give others space.



- Use a lead when walking near roads to prevent your dog from straying into oncoming traffic. Even highly trained dogs can make errors.



- Always pick up after your dog. Dog faeces can be harmful to livestock, dogs and people. Let's keep our village clean.



## Helping save and preserve our Church

# ASHFORD YOUTH JAZZ ORCHESTRA IN

# CONCERT

at **ALL SAINTS  
CHURCH**  
WOODCHURCH

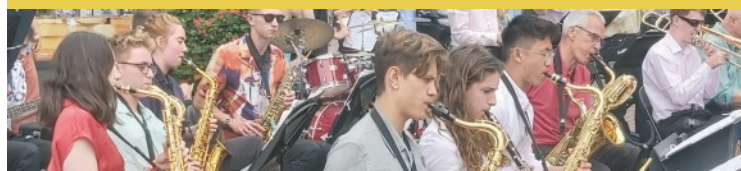
*Back by popular demand*

*A lively mix  
of Traditional, Swing,  
Contemporary and  
Modern Jazz*

## Saturday, 16th March 2024

Doors open 7pm Concert starts at 7.30pm

**LICENSED BAR and Raffle**



**Tickets £10** (includes complimentary canapes) **Online from:**

<https://www.ticketsource.co.uk/all-saints-woodchurch>

or if you prefer - visit **WOODCHURCH HUB** 01233 861381

(Open Monday-Friday 10.00am-1.00pm Saturday 10.00am-12 midday)

## WOODCHURCH SURGERY UPDATE

February is dedicated to the heart and we get an extra day to enjoy it this year. Fittingly with Valentine's Day in the middle of the month we celebrate heart health by raising awareness that one person dies from an acute heart attack every 3 minutes in the UK.

Many of the risk factors are pretty obvious - being overweight, smoking, not doing any exercise; although some cannot be entirely of your own doing such as family history of heart disease and having high cholesterol.

There is a big push now to drive cholesterol levels down much lower than previously. There is no doubt that the introduction of statins has reduced the incidence of heart disease and strokes. They are often in the press as being harmful but only 1 in 10,000 people will get a serious side effect from them but 1 in every 50 people taking them for disease prevention will avoid dying from heart attacks. For those with heart disease as many as 50,000-145,000 lives per year might be saved by getting your Low Density Cholesterol (LDL - the bad stuff) below 2.0.

Although statins have the biggest benefit there are now other very credible medications which are used alongside them or in place of them if they can't be tolerated. This includes injections called PCSK9 inhibitors which are given every six months. To do my part I am now in a new international trial to target Lipoprotein (a) which is a sub-type of LDL cholesterol and was the cause for my attempt at an early exit 4 years ago. There really is progress being made which I'm pleased about - I just hope I'm getting the active drug and not the placebo!

The "Heart UK" and "British Heart Foundation" websites both have lots of information about healthy eating, cholesterol, heart disease etc. They also have links to free CPR (resuscitation) training so that you may be able to intervene and save someone's life in the event of them collapsing. Use of a defibrillator early can be crucial and there are lots now in the village - at Shirkoak park, at The Hub, The Six Bells, Woodchurch House, outside the Dispensary of the Surgery, The Pop-in and Woodchurch School.

I have also done extensive research (on my computer) and found out that love has many health benefits and leads to less visits to the doctor. I suppose that it isn't surprising when you consider that being in love makes you feel connected to other people, feel respected and valued by other people, and gives a sense of belonging. This leads to a reduction in pain scores, reduced anxiety, lower blood pressure, less drug/alcohol abuse, fewer colds and a longer, happier life. This love can be from family and friends not just a partner. I read that the intense love of first connecting with someone can cause more stress and anxiety so you have to get over that hurdle to reap the rewards.

We welcome Dr Clare Smith back in February from her well

-deserved sabbatical which was spent travelling with her family. I was very jealous seeing the photos but glad that she was thinking of us all while she was away. I look forward to having the team back together with a new addition - "Rach" Cursley will be starting at the end of January as our new Health Care Assistant and I'm sure you will all give her the usual Woodchurch Welcome.

Best wishes on behalf of the Surgery,  
Jack Hickey GP.

### Defibrillators in Woodchurch

Defibrillators in Woodchurch that are accessible 24 hours a day, 7 days a week:

- + **Outside The HUB**
- + **At the entrance of Six Bells Park**
- + **Outside Woodchurch Surgery**
- + **At the entrance of Shirkoak Park**



Defibrillators in Woodchurch ONLY available at certain times:

- + **Woodchurch House**
- + **School**
- + **The Jean Mealham Pop-In Centre**


#### Surgery Opening Hours

Monday to Friday 9am to 5pm



#### Where to find us...

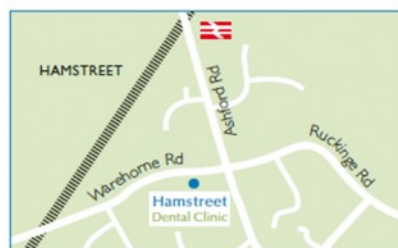
Hamstreet Dental Clinic  
Warehorne Road  
Hamstreet  
Kent TN26 2JJ

 Find us on facebook



**Hamstreet  
Dental Clinic**

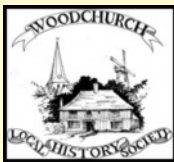
Welcomes You



**Tel: 01233 733848**  
Email: hamstreetdentalclinic@gmail.com



## Woodchurch Local History Society



On Monday February 5<sup>th</sup> we are meeting in the Memorial Hall at 7:30pm to conduct our AGM and to hear a talk about 'Newspapers and Woodchurch in the 1920's and 30's'. Our AGM will be conducted quite rapidly and then we will have a 40 minute illustrated talk on how Woodchurch was reflected in newspapers during the 1920's and 30's. For instance, the Bonny Cravat was at the centre of auctions selling off prestigious houses, properties like the Hyland Cottages and farms. There is also the story of our local policeman being attacked by a gypsy.



Our meetings are held in the Memorial Hall on the first Monday of the month at 7:30pm. We have a full programme of talks and presentations for 2024. Our speakers are either society members who are usually well versed in the history of Woodchurch or are professional speakers telling us of more aspects of Kent's past. This year, for instance, we will learn about schooling in Woodchurch from the 17th century to the present, recent discoveries of life during the Roman and Tudor periods at Smallhythe and the history of fishing families on the Dungeness peninsula.

Membership of the society is open to all and costs £12 per year. We have 9 Monday evenings in 2024 in which presentations are planned.

Why not come along to our AGM to see if you might fancy joining up? Alternatively, if the talk on Monday February 5<sup>th</sup> (details above) interests you then come along as a visitor and pay £3 at the door. There is no need to give prior notice - just turn up on the night. As a final note, the night of our AGM additionally comes with a glass of wine, or soft drink and some nibbles.

Hope to see you on the 5<sup>th</sup>.  
Thank you, Geoff [01233 860393](tel:01233860393).



As many of you know, the Festival is run by a small but dedicated group of individuals. A lot of work goes on behind the scenes throughout the year to ensure the smooth-running of the event that you have come to know and, hopefully, love. Unfortunately, due to poor health, the team is unable to devote as much time as usual to prepare for and run the Festival this year. As we could not be certain there would be the time and resources to craft the Festival into shape, we have taken the difficult decision to make 2024 a fallow year. We are very sorry for the disappointment which we certainly share with you.

If you would like to help support the Festival in the meantime, please sign up to our Friends scheme via our website. Truly, we are so grateful for your support which is invaluable to us. All memberships purchased or renewed will be valid until the conclusion of the 2025 Festival. If you own or are part of a business, you might also wish to consider becoming a corporate partner.

Rest assured that Wealden Festival will be back in June 2025. We will be using the additional time we now have to develop the popular programme of creative and nature-based experiences we have hosted at Boldshaves outside of the Festival in recent years. We will soon be sharing details of events taking place over the spring and summer, such as creative writing and wellbeing retreats, outdoor feasts and other experiences.

Newsletter subscribers will be notified when booking for each of these events goes live, with Festival Friends benefitting from priority booking. In the meantime, we send our warmest wishes and hope to see you again in the near future.

The Wealden Festival Team



### **Woodchurch Patients Participation Group (PPG)**

Please find below the dates for our 4 PPG meetings for 2024.

All Woodchurch Surgery Patients welcome!

At each meeting we will be joined by representatives from Woodchurch Surgery and a 'Speaker' from a local group/organisation.

#### **Meeting dates (Memorial Hall Annexe starting 6pm):**

Monday 26<sup>th</sup> February

Monday 20<sup>th</sup> May

Monday 19<sup>th</sup> August

Monday 25<sup>th</sup> November

I'm also pleased to confirm that Adam Littlefield, Lead for Patient Voice and Involvement at East Kent Hospitals University NHS Foundation Trust, will be our Speaker at the February meeting.

If you would like to receive PPG Surgery updates and details of speakers for the meetings, please contact Philippa at [philippa@woodchurch.btinternet.com](mailto:philippa@woodchurch.btinternet.com)



## Citizens Advice Bureau at Woodchurch HUB

Ashford Citizens Advice now holds regular, confidential consultation clinics at Woodchurch HUB on the 2<sup>nd</sup> Thursday of each month from 1pm to 4pm.

These are walk-in sessions so you do not need to book.  
For more information please contact The HUB.

## Social Prescribing

**Are you worried about a friend or relative - do they suffer with mental or physical health needs?**

We can offer support and guidance on services and support for you and your family whether it's a blue badge, benefits or community engagement. We are in The HUB the first Thursday of each month from 1pm to 4pm so please pop along to meet with a member of our team.





# All Saints Church



Dear Friends,

I hope you are all keeping safe and well in our mix of cold spells and stormy weather - I am sure this is a difficult time for our farmers.



This week (28<sup>th</sup> January) we celebrate Candlemas - we listen to the Gospel reading in Luke 2 when Mary and Joseph presented the baby Jesus at the temple according to Jewish custom. He was recognised as the Son of God by two elderly prophets - Simon and Anna. Ann Tiplady has recently been licenced as an Anna Chaplain - named after the prophet Anna. Anna chaplains have special training to support the elderly, and Ann feels called to support those with dementia and memory problems, and those who care for them.

Please contact Ann if you would like to find out more - if you would like help, or perhaps might be able to volunteer. We will be running a new club "Remember When We Were Young" for anyone experiencing difficulties and their carers/partners every 2 weeks on Wednesdays from 11.30-1.30pm starting 13<sup>th</sup> March in the Village Hall Annex.

Thanks to everyone who supported our church last year. We completed our project to refurbish our disabled toilet, but work on listed buildings is expensive and we know have only about £2,000 left in the bank (we keep a separate fund for youth work and Here to help). Please support us if you can - we need to keep our church going, and our next project is to provide disabled access with new doors and a ramp. You can give regularly or make a one-off donation here <https://www.parishgiving.org.uk/donors/find-your-parish/woodchurch-all-saints-ashford/>, by contacting me on 01233 820266 or our treasurer Jeff Kirby, or by leaving a cheque (made payable to Woodchurch PCC) or cash in the safe to the left of the door as you enter church. Please help us to keep the door open in All Saints!

Every Blessing  
Reverend Sue

## Roll up, roll up!

Spring is very much just around the corner and what better way to usher in the lighter evenings than to announce spring with a sound sure to brush away the cobwebs. We are so honoured that the Ashford Youth Jazz Orchestra have agreed to visit us again with their wonderful sound. They are back by popular demand and those of you who came along last year will know the treat you have in store. They will be playing in All Saints Woodchurch on 16<sup>th</sup> March 2024 and filling our wonderful church with their infectious enthusiasm and their skilled performance. You are assured a great evening as you revisit all your favourite tunes in such a wonderful environment. Why not share the joy and buy an extra ticket and bring along a friend? The evening is to raise funds to update and maintain our lovely church.

## Remember when we were young - Memory loss group

There will be a group beginning on the 13<sup>th</sup> March from 11:30 until 1:30 for those folk suffering from memory loss and their carers. It will be run in the memorial hall annexe and will include a light lunch. The group will be called "Remember when we were young" and it will run fortnightly.

You will have read that I have recently been licenced as an Anna Chaplain. The training is part of the Bible Society and Canterbury Diocese outreach work with older people.

The aim is to give those with any degree of memory loss a place to meet and go down memory lane. It also enables their carers to have a time to socialise and share experiences in a safe and caring environment.

Volunteers will be DBS and Safeguarding trained in line with the Canterbury Diocese safeguarding policy and procedures.

It would be so helpful if anybody has memorabilia from the 1940's through to the 1960's that they could donate, or any games or puzzles.

For more information please contact Ann on 07754 949111

Ann Tiplady, Anna Chaplain  
for Bethersden, High Halden and Woodchurch.

## WINTER WARMERS

FROM ERNEST DOE POWER



Hendon Barn, Woodchurch,  
Ashford, Kent TN26 3QP  
Tel 01233 224860  
[ernestdoeshop.com](http://ernestdoeshop.com)

**ernest DOEpower**

If you care about keeping this historic building in Woodchurch, come along and support us. We care; make 2024 the year that you do too.

All Saint's Fundraising Group



## Dementia experience - Clara Hebblethwaite

At the beginning of 2023, my mother, who suffers from vascular dementia, became a resident of Woodchurch House. My family and I have felt huge heartbreak witnessing her distress as the illness takes hold.

I've been determined to seek out nuggets of joy within this storm and have found it helpful to feel useful. Since mum is now on a secure wing, it has been important to bring life to her. I've therefore arranged for very lovely visitors such as Karen, a reflexologist, and Donna, a care home entertainer, to come in to give mum some much needed comfort, reassurance, fun and distraction. We've also done lots of planting outside the care home entrance, sometimes under mum's instruction, in order to bring a little bit of colour to those carers and visitors coming and going.

This year's highlight has been the Virtual Dementia Experience. We managed to fundraise, via a JustGiving crowd funding page, over £1,300 in order to secure a Virtual Dementia Bus to come to Woodchurch House. The bus came in early January and 32 of us were trained on the dementia experience. The group included 20 carers, 2 managers, 3 GP admin staff, 1 trainee paramedic and 6 family members.

Our aim was to increase insider knowledge for those involved in the day-to-day care of those who suffer from dementia. We know so little about this frightening illness and, since mum's diagnosis in 2019, we have felt like we're stabbing around in the dark trying to figure out the best way forward.

It was a really insightful experience and we were given the chance to feel how it feels on the inside of a brain affected by dementia and then were given face to face training in order to enable us to adjust our approach to those we care for accordingly.

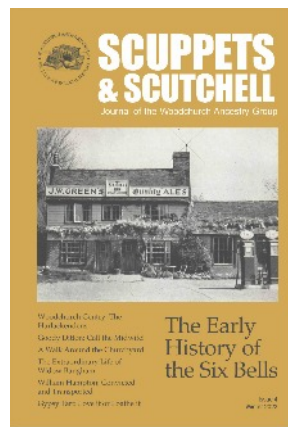
Dementia is the grimmest of grime and it cruelly affects so many individuals and their families. It's a one way ticket and those who have it are incredibly brave. We are hopeful that an increase in understanding and empathy will help many to find ways to create moments of joy for all those involved.



## Scuppets & Scutchell 4

Scuppets & Scutchell 4 is the latest issue of the award-winning local history journal for Woodchurch researched, written and produced by members of the Woodchurch Ancestry Group. Our fourth issue has 88 full-colour pages packed with interesting and well-researched articles about the village including:

- o The Early History of the Six Bells
- o Woodchurch Gentry: The Harlackendens
- o Goody Ditton: Call the Midwife!
- o A Walk Around the Churchyard
- o The Extraordinary Life of Widow Bangham
- o Gypsy Tart: Love it or Loathe it
- o William Hampton: Convicted and Transported for Theft



Scuppets & Scutchell is for anyone interested in the history of Woodchurch or keen to discover more about the village's fascinating past.

Copies are just £9.00 each plus postage and are available to buy online at [bookshop.woodchurchancestry.org.uk](http://bookshop.woodchurchancestry.org.uk) (delivered in eco-friendly, plastic-free cardboard packaging) or postage-free from the Woodchurch Hub and the Woodchurch Village Life Museum.



## Lemon Tea Reflexology

Relax & Recharge

Book a treatment today  
Home visits available

Full member of the AoR  
Elizabeth Langley MAR

01233 510952

[lizzy@lemonteareflexology.com](mailto:lizzy@lemonteareflexology.com)

[Lemonteareflexology.com](http://Lemonteareflexology.com)

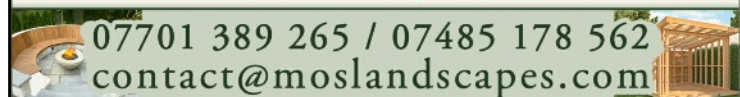
## M.O.S LANDSCAPES

Your Local Hard Landscaping Team

•Garden rooms & Sheds •Patios & Paths •Returfing  
•Decking & Pergolas •Fencing •Garden maintenance

07701 389 265 / 07485 178 562

[contact@moslandscapes.com](mailto:contact@moslandscapes.com)



## The Six Bells Inn

February is here which means "Love is in the air" with Valentines Day fast approaching, we thought we would draw attention to it with "our love for the real ales", the loyalty shown by some of the customers to their special beer, be it London Pride, Ringwood 49er, Harveys or the occasional appearance of other guest beers, currently Gadds, is heart warming for us to see. The contented look on our customers faces when they take that first sip of their chosen tippie does give us a warm feeling to see the look on their faces and their obvious enjoyment of these great beers.



The following Wednesday 21<sup>st</sup> February is our Quiz night and booking is advised, why not come in and enjoy something to eat before the excitement starts at 7:30pm. Everyone (including all of us here) enjoy the fun of answering the questions and the sometimes rather unexpected answers!!

This year is a leap year so we would like to wish anyone who was born on the 29<sup>th</sup> a very happy birthday and if there is anyone reading this article that was born on the 29<sup>th</sup> then we would be delighted to see you here at the Bells.

Spring is round the corner and the longer days are coming so we wish you all a fabulous February and we look forward to seeing you all here whether it be for a quick pint, bar snack or meal with some mouthwatering "Specials".

With love as always  
All of us at The Bells xxxx

## Bonny Cravat

January is finally over and we can now all start looking forward to lighter and warmer days!



We have a lovely line up for you this month, with live music from Concrete Igloos, 8:30pm on Friday 2<sup>nd</sup>, Thomas Abrahams, 6:00pm on Sunday 11<sup>th</sup> and the return of Live music Bingo with Lima at 7:00 pm on Thursday 22<sup>nd</sup> - You'll definitely want to book in for this one! Our first Live music was a great hit and promises to be bigger and better this month!

We have been working super hard behind the scenes to bring you an exciting new menu just in time for valentines day! We will be launching this on Monday 12<sup>th</sup> Feb and have a special offer for any tables booked with us on valentine's day - watch this space and be sure to book your table so you don't miss out.

We are looking to host our first boot fair in the spring so if this is something you might be interested in please let us know so we can add you to our list to contact once we have a date in place.

There will be many more exciting things coming from us in 2024. We can't wait to share it all with you! We'd like to thank everyone for your continued support during these trying times and look forward to seeing you all throughout the year.

Love as always,  
The Bonny Family

**NEW**  
**WOODCHURCH MORRIS**

**FORMING A FRESH SIDE**

**LEARN A NEW SKILL...**

**KEEP FIT...**

**FREINDSHIP...**

**HAVE FUN...**

**TRADITIONAL TEAM DANCING...**

**ALL WELCOME...**

**We need you**

**Want to know more?...**

Email: [morriswoodchurch@gmail.com](mailto:morriswoodchurch@gmail.com)

Search: Woodchurch Morris

Telephone: 07767378649

**FORMING A FRESH SIDE**

**MUSEUM 150+ Lottery Draw**

Thank you for everyone who has continued to support the Museum by subscribing to our 150+ lottery draw for 2023/4.

Tickets are still available for the remainder of the draw. For more information please contact Joyce via The HUB - [enquiries@woodchurchhub.uk](mailto:enquiries@woodchurchhub.uk) or 01233 861381

**January 2024 Draw Results**

1st prize	£50	Jon Chaplin	591
2nd prize	£30	Gordon Baker	1016
3rd prize	£20	Maggie Pavely	1253

Boldshaves Garden - The garden (and Tea House) will re-open for the season on Friday 22<sup>nd</sup> March, and will then be open on Fridays, Saturdays, Sundays and public holidays from 2-6pm until Sunday 20<sup>th</sup> October. Entrance £7.50, children under 14 free.

**BOLDHAVES**

We also welcome pre-arranged garden tours for groups, clubs and societies. Please call on [01233 860283](tel:01233860283) to agree dates and finalise arrangements.

For further details and events throughout the year, please see our website: [www.boldshaves.co.uk](http://www.boldshaves.co.uk)



Everything **Outside**

Bringing New Life  
To Your Garden

For A Quick Quote From A Company You Can Trust Call

☎ 01580 766 232 ☎ 07795 465 861

## Welcome To Everything Outside

We cover a wide range of services to meet the requirements of our ever-growing client list, if you are looking for a company you can trust to provide a high standard of quality work covering

- ✓ Gardening
- ✓ Garden Design
- ✓ Fencing
- ✓ Clearance
- ✓ Landscaping
- ✓ Hedge Cutting
- ✓ Tree Surgery
- ✓ Digger Work

and much more. Then call our experienced team today on 07795 465 861. To view our full range of services, click on the link below.

Our head office is based in Tenterden, Kent and means we are in the perfect location to proudly service Kent and East Sussex. All our services are tailored to each job we carry out and our team are experienced in all aspects of fencing and landscaping services making us your number one choice for all work you require.

**Great Work**

**Great Reputation**

**Great Price**



### Design, planning & build services

Now offering full 3d design development for your extension, new build or conversion project.

Please call us for an introduction to our design services at our Woodchurch office.

01233 861177 [vernacularhomes.com](http://vernacularhomes.com)



## OUR SPONSORS

**fab feet**  
Professional Foot Healthcare

[www.fabfeethealthcare.co.uk](http://www.fabfeethealthcare.co.uk)

Delivering high quality Podiatric care in the  
comfort of your own home

Providing a reliable and friendly service of professional  
treatments for all of your foot ailments:



Call Michelle on:

**Tel: 01233 731207**

Registered & Insured



*muscle whisperer*

*Remedial massage therapy.*

**Your Local Woodchurch Massage Therapist**

- Remedial Massage
- Sports Massage
- Holistic Massage

- Ultrasound Therapy
- Electrotherapy

- Injury Treatments & Rehabilitation
- Rehabilitation Taping/Strapping
- Athletic Taping/Strapping



**Bookings - 07799221043**

[www.musclewhisperer.org.uk](http://www.musclewhisperer.org.uk)

**Treatment Room - Little Vale TN26 3QW**



[musclewhisperer@outlook.com](mailto:musclewhisperer@outlook.com)



**Karen Stevens**

Massage and Reflexology

Massage and Reflexology from my treatment room in Woodchurch

To book or to discuss your treatment needs call me on:

☎ 07808675251

**Dolmen Conservation & Joinery Ltd**

**Seasoned Logs, ready to burn**

**Sustainably sourced logs  
delivered to your door**

Call Jack on **07804 881461**

for prices and delivery - or visit  
The Woodland Centre,  
Warehorne Road, Woodchurch  
(next to the Rare Breeds Centre)





# B.T.C

Ben Taylor Carpentry & Construction

07585509817

## All aspects of carpentry and construction

- extensions
- porches
- bespoke fitted furniture
- patios
- fencing and landscaping and much more



B.T.C



b\_t\_c\_construction



07585509817



## Woodchurch Cottage Flowers

We are an artisan florist and flower grower. We grow and sell the most amazing seasonal English flowers. All grown here at our smallholding in Woodchurch in Kent. We are a small flower farm working with nature and the seasons.



Call or text 07960 449235

[www.woodchurchcottageflowers.co.uk](http://www.woodchurchcottageflowers.co.uk)



The Woodchurch Community News is distributed **free of charge** to over 1,000 houses each month in Woodchurch and surrounding areas. If you would like to become an advertising sponsor then please visit The Woodchurch HUB Web site - **The HUB > Newsletter Advertising**

If you would just like to help us with the costs of production please go to **The HUB web site** and click the **"Donate"** button.

# KENT HOLIDAY COTTAGES

+44 (0) 1233 860 293

[info@kentholidaycottages.co.uk](mailto:info@kentholidaycottages.co.uk)



## WOODCHURCH

SHOP ✿ BAR ✿ WINE TASTING ✿ TOURS

Thursdays to Sundays 11am - 5pm

<http://woodchurchwine.co.uk> tel:01233 860276

## D K Plastering Services

All plastering work carried out



Fully Insured Professional Workmanship

For a clean & tidy job call David

**Mobile**

**07974 891795**

**Or Email**

[dk.plastering@hotmail.co.uk](mailto:dk.plastering@hotmail.co.uk)

**You could advertise your company here from as little as £10 per month**

## ETHAN JOHNSON

CARPENTRY, JOINERY  
AND RESTORATION

Free Estimates

**07484 173957**

[ethanjohnson303@gmail.com](mailto:ethanjohnson303@gmail.com)

Experienced in bespoke made to measure projects and working to preserve original features of older buildings . We Undertake wide variety of projects.



On a bleak, dark and chilly evening David Holman, a former English teacher from High Halden, and author of the Alex Swan mystery series (set in the Cold War before the fall of the Berlin Wall in 1989), was our first speaker of 2024, with his talk entitled "The Anatomy of a Thriller." He explained that successful thrillers and crime novels actually need quite a rigid structure from start to finish. They are usually fast paced, action packed and have moments of great conflict. They are often written in the present tense, which helps to create a sense of urgency and immediacy, and the author aims to gradually, but inexorably, build the suspense and pressure until the climax, or point of greatest tension and emotional intensity, in the narrative is reached. The climax is then followed by a sharp fall in action, which in turn leads to the denouement and final resolution of the tale. Hopefully, this will give a satisfying sense of closure, whilst leaving the reader wanting more. David compared the writing of this type of novel to the baking of a fine Victoria Sponge Cake, as both need all the right ingredients, and in the right quantities, to create the perfect end product. David suggested that, whilst all the characterisation should be of a high standard, it was vital that the thriller have a compelling Protagonist, who is obliged to overcome a lot of obstacles along the way, and who is up against a twisty, wily and intelligent villain, who is not immediately obvious as such. Other ingredients might include mystery, intrigue, suspense, atmosphere and, perhaps, an initial hook to grab the reader's attention. Thank you, David, for such an informative talk to start our year!



Huge congratulations to Josie, who won the 2023 Competition Cup. Nicole came 2<sup>nd</sup> and Barbara was 3<sup>rd</sup> and Barbara made a good start to 2024 as she also won the January "I" competition with her miniature carved igloo, which with the top removed, revealed two tiny Inuit people.



Our next meeting, scheduled for Tuesday, 13<sup>th</sup> February at 7.15 pm in the Memorial Hall, is our Annual Meeting, but this will be combined by a brief talk and demonstration of Reflexology by Elizabeth Langley, so do join us if this might be of interest to you!

## The Big Thin Red Line



On the morning of March 16<sup>th</sup> 2024 TBTRL Woodchurch will be holding a ceremony on the green to commemorate the 80th Anniversary of a crash of an USAAF B24 Liberator Bomber at Oakhurst Farm on Brook St in which 7 of the crew were killed. To mark this sad incident, we will be planting a memorial oak tree on the green near the village flagpole and unveiling a new memorial Roll of Honour Board in the Memorial Hall to commemorate all of the 31 military personal who died within the parish boundaries in WW2 and on operations from Woodchurch Airfield. Principal civic guests will be a Deputy Lieutenant of Kent representing the Lord Lieutenant of Kent and the Mayor and Mayoress of Ashford.

Although there will be local veterans groups attending, the event is primarily for the villagers of Woodchurch to honour the sacrifice of these men for our freedom.

More details of the ceremony will be published in the Mar edition of the newsletter. In the interim we are seeking contributions from the local community to contribute to the costs of the Tree and Roll of Honour Board, details can be found at this gofund.me link:

<https://gofund.me/e16ab49d>



This native oak was planted on 16 Mar 2024,  
the 80th Anniversary of Woodchurch's most tragic incident of  
WW2

In memory of:

2 Lt John L SCARBOROUGH Pilot  
2 Lt Loran M Jr BEAN Co-Pilot  
2 Lt Alden C NESBIT Navigator  
2 Lt David EDMONDS Bombardier  
S/Sgt Edgar P MUIRHEAD Engineer  
S/Sgt Robert M HOWLEY Rad Op  
Sgt Robert J STICKEL Waist Gun

Whose B24 Liberator "THE SHARK FACE" 47th Sqn, 44th Bomb GP, USAAF, flew low over this green where school children were playing football on 16 Mar 1944 having lost 3 of its 4 engines on its mission in Germany. The aircraft crash landed at Oakhurst Farm killing 7 of the 10 crew. Eyewitnesses maintain the pilot successfully kept his aircraft in the air to avoid crashing in the village.

Also, in memory of the 22 other allied aircrew who lost their lives in operations in Woodchurch or from missions from Woodchurch airfield whose names are recorded in the memorial hall.

# Simple Kent Funerals

Relaxed, flexible, imaginative, economical, caring  
Applefield Cottage, Redbrook Street, Woodchurch TN26 3QS  
Call Toby on 07806 613297 • [www.simplekentfunerals.co.uk](http://www.simplekentfunerals.co.uk)

We work in an eco-friendly and environmentally-sustainable way and are certified as a net carbon neutral business

# WOODCHURCH CARNIVAL 2024

We have arrived in 2024 and the Carnival team enjoyed talking to many of you at the launch of the 2024 Woodchurch Carnival 27<sup>th</sup> January that was held at Woodchurch Primary School.

It was encouraging to see so many of the community of all ages, along with our local neighbours from Ashford, come together to attend the opening event.

The Carnival set for 8<sup>th</sup> June in line with D Day anniversary and is set to be another great day for everyone. The band line-up is set, the funfair hired, and many displays and stalls are already booked. We do still have places for additional displays and stalls if you would like to be involved. We already have some floats entered for the parade and there is still time for you to put in your own entry - either as an individual or as a group.

We have an extra treat this year with the "Smoking Apples" theatre company, who will bring innovative puppetry and visual theatre to Woodchurch.

We know that the food outlets were not up to scratch in 2022 and so this year we have booked 8 different vendors to tempt you with mouth watering foods - something for everyone.

Keep an eye on social media and look out for the new website soon to be up and running. Please contact us if you want to be involved or volunteer to assist in anyway.

E-mail: [enquiries@woodchurchcarnival.uk](mailto:enquiries@woodchurchcarnival.uk)

Or contact us through Woodchurch HUB



## 8<sup>th</sup> JUNE 2024

### 'WoodchurchYard Together' Volunteer weekends 2024

February 3 & 4

March 2 & 3

April 6 & 7

April 27 & 28

May 25 & 26

June 22 & 23

July 27 & 28

August 24 & 25

September 21 & 22

October 19 & 20

November 16 & 17

Keeping in touch:

Email:

[philippaatwoodchurch@btinternet.com](mailto:philippaatwoodchurch@btinternet.com)

Phone:

07774 608281

Or follow us on:



Search:

'WoodchurchYard  
Together'