



WOODCHURCH COMMUNITY NEWS

The village community working together

January 2024

Contact us: Telephone 01233 861381 Email enquiries@woodchurchhub.uk Web www.woodchurchhub.uk

OVER 1,000 COPIES distributed every month in the Woodchurch area

WOODCHURCH Community Calendar



Weekly events:

Saturdays:

Boot Camp 9:00am-10:00am on the Village Green

Sundays:

Outpost Church 10:00am-12:00pm in the S&G Community Centre, Lower Road

Karate 10:00am-12:00pm in the Jean Mealham Centre

Mondays:

Pilates 9:00am-10:00am in the Memorial Hall

Tai Chi and Qigong 9:45am and 10:45am at the S&G Community Centre

Baby Yoga 1:00pm-2:15pm in the Memorial Hall

Knit and Natter 2:00pm - 3:30pm in the Jean Mealham Lodge

Line Dancing 2:30pm - 4:30pm in the Jean Mealham Centre

Beavers 6:00pm-7:00pm in the S&G Community Centre

BodyTone 6:15pm-7:00pm at the Memorial Hall

BodyFlex 7:15pm-8:00pm at the Memorial Hall

Scouts 7:30pm-9:00pm in the S&G Community Centre

Tuesdays:

Pilates 9:00am-10:00am, 10:15am-11:15am and 6:00pm-7:00pm in the Memorial Hall

Yoga 10:00am-11:15am in the Jean Mealham Studio

Coffee Morning 10:00am-12:00pm in All Saints Church

Little Leaves Forest School 10:00am - 12:00pm under 5's Play Group based in Woodchurch

Puzzle Club 2:00pm-4:00pm in the Jean Mealham Lodge

Cubs 5:30pm-7:00pm in the S&G Community Centre

Karate 7:00pm-9:00pm in the Jean Mealham Studio

Wednesdays:

Pilates 9:00am-10:00am in the Memorial Hall

Museum Volunteers - maintenance and gardening 9:30am-12:00pm at the Museum

Yoga 10:00am-11:15am in the Jean Mealham Studio

Over 60s Pop-In 2:00pm-4:00pm Tea and coffee and boot fair marquee at the Jean Mealham Centre

Blend Youth Cafe 3:00pm-5:00pm in All Saints Church Term only

Rainbows 5:00pm-6:00pm in the S&G Community Centre

Fish and Chips 4:30pm-7:30pm in the Village Car Park

Brownies and Guides 6:00pm-7:15pm in the S&G Community Centre

Previous editions of the Newsletter can be found on The HUB Web site www.woodchurchhub.UK

Thursdays:

Art Society 10:00am-1:00pm at the Memorial Hall

Margaret Morris Movement 2:15pm-3:15pm in the S&G Community Centre, Lower Road

BodyBlast 6:00pm-7:00pm on the Memorial Hall

Badminton 7:00pm-11:00pm at the Memorial Hall

Karate 7:00pm-9:00pm in the Jean Mealham Centre

Explorers 7:30pm-9:30pm in the S&G Community Centre

Fridays:

Little Leaves Forest School 10:00am - 12:00pm under 5's Play Group based in Woodchurch

Other Events:

Wed 3rd **BCP Holy Communion** - 12:00am at All Saints Church

Sun 7th **Benefice Service Eucharist** - 11:00am at All Saints Church

Tue 9th **WI - "The Anatomy of a Thriller"** - 7:15pm in the Memorial Hall

Mon 15th **Quiz Night at the Six Bells** - 7:00pm at The Six Bells

Sun 21st **Morning Worship** - 11:00am at All Saints Church

Evensong - 4:00pm at All Saints Church

Thu 25th **Parish Council Meeting** - 7:00pm in the Memorial Hall Annexe

Fri 26th **Woodchurch Village Shed AGM** - 7:00 in the S&G Community Centre

Sat 27th **Carnival 2024 Official Launch** - at Woodchurch Primary School

Sun 28th **BCP Holy Communion** - 12:00am at All Saints Church

The Full Community Calendar can be found at www.woodchurchhub.uk/community-calendar



It is time to confirm your events in the Community Calendar

It is the beginning of a new year and we take this opportunity to begin with a blank calendar to ensure that the published information is as accurate as possible. If you publish your events/classes in the calendar please take the time to confirm your dates, times and venues for 2024. You can do this by emailing the details to enquiries@woodchurchhub.uk, or by leaving the information with The HUB.

If you don't let us know, neither will the village!



WOODCHURCH PARISH COUNCIL • UPDATE •

First an apology for having to postpone the December 14th meeting by a week, but this was necessary due to a case of COVID.

The next month will be a busy period for the Council, as we analyse the outcome of the Village Survey, and use the results to help formulate the budget for 2024-2025. The final budget will be agreed upon by the Parish Council at the January meeting.

CALA Homes: The Parish Council would like to point out to residents that you can make further comments on the proposed look of the development of the 40 new homes by visiting the Ashford Borough Council Planning web page. www.ashford.gov.uk/planning-and-development/ and clicking on view planning applications. Then type planning application **NOT/2023/2160**. The deadline for comment is the 4th January 2024.



Bridge Close: The Parish Council discussed the proposed development at land Southeast of Bridge Close and voted to object to the planning application. A lengthy comment has been submitted to Ashford Borough Council Planning listing the reasons why the Parish Council had to object to this application, which included the lack of affordable houses and the ongoing flooding problems in this part of the village.

With the ongoing issue of flooding in the lower part of the village, The Parish Council agreed at the last meeting on November 23rd to write a letter to our MP Damien Green, and at the same time to the CEO of Southern Water. In the letter we plan to invite the Southern Water CEO to attend a meeting so that they can explain their plans for upgrading the current sewerage system.

Part of the play area remains out of action, however we were successful in obtaining a grant from Ashford Borough Council, for the repairs. The contractor has already been contacted and given the go-ahead to start the work as soon as is practicable. They will keep the Council informed as to when they will commence the repair work.



Traffic monitoring: In response to residents, The Parish Council has instructed Kent County Council to carry out the three traffic monitoring surveys that were agreed earlier in the year. The Parish Council has ordered an additional two to be carried out along Redbrook Street and Susans Hill, following concerns over the speed of vehicles along both roads.



Finally, a reminder that there are still two vacant seats on the Council. If you would like to have an impact on the wider community, then this is an opportunity for you to be co-opted onto the council. The role would allow you to have a say in the Parish Council decision making process and represent your fellow residents. Why not come along to a meeting to see what is involved?

For further information please contact the Clerk or one of the members of the Council.

Upcoming roadworks in and around Woodchurch Information from KCC and one.network

Roadworks - Front Road

9th - 12th January 2024

Closure in force: Traffic control

Description: UK Power Networks



**How to report highway problems
including potholes, streetlights and
broken signs**

www.kent.gov.uk/highways

Parish Council meetings

The next Parish Council meeting will be held on

Thursday 25th January

7:00pm in the Memorial Hall Annexe

All Parish Council meetings are open to the public so please come along - as we value your questions and suggestions.

We are here to support the village and so it is important that you let us know the things that are important to you

How to contact your Parish Council

In person: By talking to one of your councillors - details on the Parish Council Web site

By email: clerk@woodchurch-pc.gov.uk

By phone: 01233 861381

Through The HUB: Place your correspondence in a sealed envelope marked "Parish Council" and deliver to The HUB

By post to: Woodchurch Parish Clerk, c/o The HUB, Front Road, Woodchurch, Kent, TN26 2PA

Through the contact form on the Parish Council Web site: www.woodchurchhub.uk/parish-council/

Margaret Morris Movement

Margaret Morris Movement Gentle Exercise for the over 50's classes will resume on February 8th 2024.

WOODCHURCH SURGERY UPDATE

Having driven home for Christmas I arrived at Reading Street and a festive wave of joy hit me. The Christmas week was absolutely amazing and the positive energy from the staff and patients was very easy to see and feel. It really is a time for giving and so I put on an Elf outfit and handed out some secret Santa presents. I really am very proud of the effort our team put in and it was a pleasure to hear all the festive cheer.

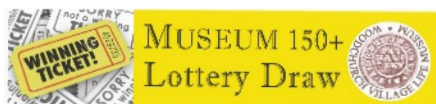


As we enter 2024 we see the month of Dry January which speaks for itself. There is also a week for Cervical cancer awareness. Women aged between 25 and 64 are called for cervical screening - a smear. This program was brought into the NHS in the 1980s when about 8,000 women died every year from Cervical cancer. Screening was brought in and has reduced this to a few hundred a year so it has been a huge success. The continued success depends on women coming forward to have a smear.

The test now checks for "high-risk" human papilloma virus on the cervix and if this is found then further tests are done. You should be invited every 3 years if you are under 50 and every 5 years after that so if you think you may be overdue please do call up and check. It has been such a successful program and really saved lives so please don't hesitate to get involved with it.

We sadly say a very fond farewell to Karen Card who is one of our Healthcare Assistants. She has been a brilliant part of our team but leaves to make way for Rachel who will be starting at the end of January. I know you will all give her the traditional Woodchurch welcome.

On behalf of the whole team at Woodchurch Surgery I wish everyone the very best of health for 2024, best wishes
Jack Hickey, GP



Thank you for everyone who has continued to support the Museum by subscribing to our 150+ lottery draw for 2023/4.

Tickets are still available for the remainder of the draw. For more information please contact Joyce via The HUB - enquiries@woodchurchhub.uk or 01233 861381

December 2023 Draw Results

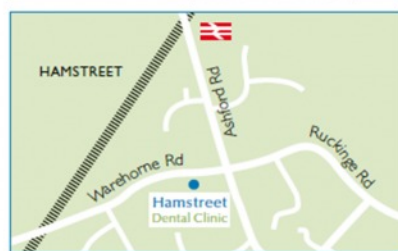
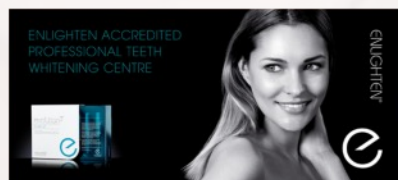
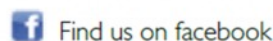
1st prize	£50	Mary Ellis	998
2nd prize	£30	Reg Short	763
3rd prize	£20	Pat Rippon	570

Surgery Opening Hours
Monday to Friday 9am to 5pm



Where to find us...

Hamstreet Dental Clinic
Warehorne Road
Hamstreet
Kent TN26 2JJ



Tel: 01233 733848
Email: hamstreetdentalclinic@gmail.com

To help keep the Newsletter free for the village please become one of our sponsors, or give a donation if you can.
www.woodchurchhub.uk or contact The HUB



Lemon Tea Reflexology

Relax & Recharge

Book a treatment today
Home visits available

Full member of the AoR
Elizabeth Langley MAR

01233 510952
lizzy@lemontea-reflexology.com
Lemontea-reflexology.com

M.O.S LANDSCAPES

Your Local Hard Landscaping Team

- Garden rooms & Sheds • Patios & Paths • Returfing
- Decking & Pergolas • Fencing • Garden maintenance

07701 389 265 / 07485 178 562
contact@moslandscapes.com



All Saints Church



Dear Friends,

December has been a very busy month. I know that there have been lots of events in and around the village, as well as our services in church. I enjoyed the invitation to switch on the Christmas Tree lights this year, and to bless the tree. It was also lovely to welcome Woodchurch CEP School into church for their Christmas Service, which was well attended by families too. There was also an online Christingle service for both Woodchurch and High Halden schools.



Revd Mike led a Christingle service at Woodchurch House. On Christmas Eve we had our crib and Christingle service, and then a Communion Service on Christmas morning - lovely to see everyone who came along to one of the services.

This month we celebrate Epiphany - the arrival of the Three Wise Men - with a service on January 7th at 11am in All Saints.

It was wonderful to commission Ann Tiplady to be an Anna Chaplain last month. Anna Chaplains serve older people in parishes, and Ann has a wealth of experience in pastoral ministry and lay leadership in the church, and has great gifts to bring to this new ministry in our Benefice. I am looking forward to serving alongside Ann as we discern how best to support those in Woodchurch who are suffering with memory problems and those who care for them, and also those who are bereaved. I am praying that others will feel called to support this new ministry as we reach out to those who are struggling.

Please get in touch if there is anything we can help with.

Mike and I wish everyone A Happy and Healthy 2024.

God Bless, Sue

New Year is a time for looking forward. We all eagerly await all the good things that we hope are ahead of us. Some of us will be making resolutions to change our lives in some way, and others may be just glad that the past year is behind us. It really is a time for both reflection of what has gone before and hope for what is yet to come.

2023 was a busy year for All Saints, Woodchurch. We saw events both directly in our church and we were also actively involved in supporting other village events. You may not be aware that your church does so much more than simply hold services. We are active in the community running the foodbank, a youth club, coffee mornings, winter warmers and offering emotional support for those who feel able to reach out.

We work in close association with the school and also offer support for older residents. We are there for all the major events in your life, for baptisms, weddings, christenings, and funerals. In fact Woodchurch would simply not be Woodchurch without your church.

Please help us to keep the church well maintained and running smoothly. When you are making your resolutions for 2024 please resolve to come to one of our events, or support us in some way. We are there for the community, but we need the community to be there for us too.

After the excitement of Christmas we all need to look forward to exciting times ahead.

Happy New Year.

WoodchurchYardTogether ("WYT")

THANK YOU

TO EVERYONE WHO HAS HELPED US
MAINTAIN OUR CHURCHYARD AGAIN DURING
2023

.....VOLUNTEERING, DONATING FUNDS/TOOLS/BULBS, CAKE
MAKING, WORDS OF ENCOURAGEMENT & APPRECIATION AND
MORE - TOGETHER WE'VE MADE A DIFFERENCE!

Volunteer weekends will start again in

February 2024

WINTER WARMERS FROM ERNEST DOE POWER



IN STORE NOW
**OUR RANGE
OF HEATERS**



IN STORE NOW
COAL & KINDLING



IN STORE NOW
WE STOCK CALOR GAS

Hendon Barn, Woodchurch,
Ashford, Kent TN26 3QP
Tel: 01233 224860
ernestdoeshop.com



Andrew's Ashton's informative talk on St. Nicholas proved an excellent way to get Woodchurch WI members in a festive mood at our December meeting. Saint Nicholas, Bishop of Myra, was born in Patara (present day Turkey) to wealthy, devout Christian parents. He was known as "Nicholas the Wonder Worker," as, amongst other good deeds, he provided gold dowries for three young girls and saved three men, who had been falsely imprisoned and sentenced to death. He was also Patron Saint of sailors, merchants, children, brewers and pawn brokers and many more! It is believed that he died on 6th December, 343 and, thereafter, even after the reformation to Protestantism when saints were not so highly revered, he remained an important figure in Holland. Indeed, the Dutch continued to celebrate his feast day on 6th December when Dutch children would put out their shoes the night before. In the morning, depending on whether they had been good or naughty during the year, they would wake to discover that Saint Nicholas had called and filled their shoes with gifts if good, or birch twigs if not. In the 1700s Dutch immigrants then carried the legend of Saint Nick across the Atlantic to New Amsterdam, or New York as it is now. In Holland Saint Nicholas was known as Sint Nickolaas, or by his nickname of Sinterklaas, but in America Sinterklaas soon became Santa Claus and the 6th December gift giving became part of the Christmas holiday at the end of December.



The competition of "A Christmas Table Decoration" was won by Nicole and Lynn and Cathy tied for second place.

Our next meeting is scheduled for Tuesday, 9th January, 2024 at 7.15 pm in the Memorial Hall when David Holman, our speaker, will explore with us "The Anatomy of a Thriller". Do join us, if you can.

The Six Bells Inn

Well hello to 2024 and goodbye to 2023! It only feels like yesterday that we were looking forward to the New Year of 2023. There have been so many changes here at the Bells during the past 12 months with people leaving and new faces arriving.



I'm sure that we will all take time to reflect and think about things that have happened with many being happy and exciting but there have also been such sad occasions but thankfully with such kind and caring people that we need never feel alone.

All of us here at the Bells and our neighbours at the Bonny offer a warm welcome and a chance to have a catch up and of course, put the world to rights. So, if you just want to come in and experience a friendly local atmosphere then you know where we are.

The days are now getting longer and Spring will be upon us soon but in the meantime, we have our first quiz of the year Monday 15 January (please book early) and our chef is preparing some tasty specials to tickle your taste buds.

Finally, a huge thank you to you all, both customers and staff, for being so supportive and making the Bells such a warm and friendly place to be. What truer words can be spoken than to say "Arrive as strangers but leave as friends"

With love as always and we hope a very Happy 2024 awaits us all.

All of us "At The Bells" xxxx

NEW

WOODCHURCH MORRIS

FORMING A FRESH SIDE

KEEP FIT...

FRIENDSHIP...

HAVE FUN...

TRADITIONAL TEAM DANCING...

ALL WELCOME...

KEEP FIT...

FRIENDSHIP...

HAVE FUN...

TRADITIONAL TEAM DANCING...

ALL WELCOME...

Want to know more?...

Email: morriswoodchurch@gmail.com

Search: Woodchurch Morris

Telephone: 07767378649

FORMING A FRESH SIDE

We need you

CILLIAN MURPHY / EMILY BLUNT / MATT DAMON / ROBERT DOWNEY JR. / FLORENCE PUGH

WOODCHURCH FILM SOCIETY PRESENTS

OPPENHEIMER

SATURDAY 3RD FEBRUARY AT 18.30

FISH AND CHIP SUPPER INCLUDED

PLUS LICENCED BAR AND A RAFFLE

TICKETS £20.00 pp AVAILABLE FROM WOODCHURCH HUB (01233 861381) OR ONLINE FROM

www.ticketsource.co.uk

(Because of arranging supper numbers there will be no tickets available on door so please book in advance)

OPPENHEIMER

A FILM BY CHRISTOPHER NOLAN

Everything **Outside**

Bringing New Life
To Your Garden

For A Quick Quote From A Company You Can Trust Call

☎ 01580 766 232 ☎ 07795 465 861

Welcome To Everything Outside

We cover a wide range of services to meet the requirements of our ever-growing client list, if you are looking for a company you can trust to provide a high standard of quality work covering

- ✓ Gardening
- ✓ Garden Design
- ✓ Fencing
- ✓ Clearance
- ✓ Landscaping
- ✓ Hedge Cutting
- ✓ Tree Surgery
- ✓ Digger Work

and much more. Then call our experienced team today on 07795 465 861. To view our full range of services, click on the link below.

Our head office is based in Tenterden, Kent and means we are in the perfect location to proudly service Kent and East Sussex. All our services are tailored to each job we carry out and our team are experience in all aspects of fencing and landscaping services making us your number one choice for all work you require.

Great Work

Great Reputation

Great Price



Design, planning & build services

Now offering full 3d design development for your extension, new build or conversion project.

Please call us for an introduction to our design services at our Woodchurch office.

01233 861177 vernacularhomes.com



OUR SPONSORS

fab feet
Professional Foot Healthcare

www.fabfeethealthcare.co.uk

Delivering high quality Podiatric care in the
comfort of your own home

Providing a reliable and friendly service of professional
treatments for all of your foot ailments:



Call Michelle on:

Tel: 01233 731207

Registered & Insured



muscle whisperer

Remedial massage therapy.

Your Local Woodchurch Massage Therapist

- Remedial Massage
- Sports Massage
- Holistic Massage

- Ultrasound Therapy
- Electrotherapy

- Injury Treatments & Rehabilitation
- Rehabilitation Taping/Strapping
- Athletic Taping/Strapping



Bookings - 07799221043

www.musclewhisperer.org.uk

Treatment Room - Little Vale TN26 3QW



musclewhisperer@outlook.com



Karen Stevens

Massage and Reflexology

Massage and Reflexology from my treatment room in Woodchurch

To book or to discuss your treatment needs call me on:

☎ 07808675251

Dolmen Conservation & Joinery Ltd

Seasoned Logs, ready to burn

**Sustainably sourced logs
delivered to your door**

Call Jack on **07804 881461**

for prices and delivery - or visit
The Woodland Centre,
Warehorne Road, Woodchurch
(next to the Rare Breeds Centre)



B.T.C

Ben Taylor Carpentry & Construction

07585509817

All aspects of carpentry and construction

- extensions
- porches
- bespoke fitted furniture
- patios
- fencing and landscaping and much more



B.T.C



b_t_c_construction



07585509817



Woodchurch Cottage Flowers

We are an artisan florist and flower grower. We grow and sell the most amazing seasonal English flowers. All grown here at our smallholding in Woodchurch in Kent. We are a small flower farm working with nature and the seasons.



Call or text 07960 449235

www.woodchurchcottageflowers.co.uk



The Woodchurch Community News is distributed **free of charge** to over 1,000 houses each month in Woodchurch and surrounding areas. If you would like to become an advertising sponsor then please visit The Woodchurch HUB Web site - **The HUB > Newsletter Advertising**

If you would just like to help us with the costs of production please go to **The HUB web site** and click the **"Donate"** button.

KENT HOLIDAY COTTAGES

+44 (0) 1233 860 293

info@kentholidaycottages.co.uk



WOODCHURCH

SHOP ✿ BAR ✿ WINE TASTING ✿ TOURS

Thursdays to Sundays 11am - 5pm

<http://woodchurchwine.co.uk> tel:01233 860276

D K Plastering Services

All plastering work carried out



Fully Insured Professional Workmanship

For a clean & tidy job call David

Mobile

07974 891795

Or Email

dk.plastering@hotmail.co.uk

You could advertise your company here from as little as £10 per month

ETHAN JOHNSON

CARPENTRY, JOINERY AND RESTORATION

Free Estimates

07484 173957

ethanjohnson303@gmail.com

Experienced in bespoke made to measure projects and working to preserve original features of older buildings . We Undertake wide variety of projects.



Flourish Together Federation

High Halden and Woodchurch CEP Schools

Joined through the values of love and hope, we journey together so that our school communities can live in all its fullness and flourish as God intended.

Governor Vacancies

Are you enthusiastic about education? Do you want to help make a difference to the lives of local children? Are you willing to volunteer? If so, then we want to hear from you.

We are looking for committed people to join our Federation's Governing Board as Co-opted Governors. We have a number of vacancies in the co-opted governor category and would welcome applications from local people.

The Governing Board operates at a strategic level and is not involved in the day-to-day running of our schools. We are responsible for both the conduct of the schools and for the promotion of high standards. We carry out this role by setting the vision, ensuring that the schools work efficiently and effectively towards achieving their vision, and that the schools provide a high quality education for their pupils. This is done by building a thorough knowledge of the schools and their communities, by both supporting and constructively challenging the school, and by ensuring accountability and compliance.

Governors need not be experts in the field of education. What they do need is an interest in our schools and in the welfare of the pupils, together with the time and willingness to get involved.

If you would like to find out more about how you can contribute to governance at our schools or have any questions, then please contact either High Halden or Woodchurch school office who will then arrange for our Chair of Governors to contact you.

High Halden CEP School- 01233 850285 or office@high-halden.kent.sch.uk

Woodchurch C of E Primary School- 01233 860232 or office@woodchurch.kent.sch.uk



Nurture, Grow, Shine



Woodchurch Village Sheds members hope everyone in the village had a good Christmas and all the very best for 2024. Another year gone by.

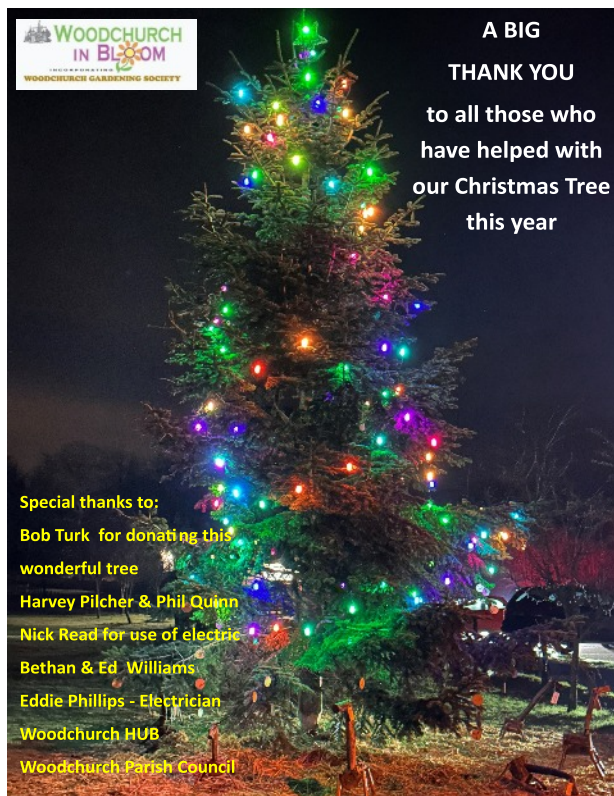
The revised Planning Application went into Ashford Borough Council (ABC) on 12th December and we are waiting for the outcome. Fingers crossed for some good news. Subject to Planning permission going through we hope to have our Shed up and running sometime in the year, hopefully for the spring.

We meet each week at 10am until approx. 1pm on a Thursday at the Woodchurch Community Centre and Woodchurch Scouts and Guides where we undertake various jobs, enjoy a cup of tea, coffee and biscuits and generally have a good chat.

Whilst we have been very fortunate to have a grant from the National Lottery and the Carnival we are now in need of raising more funds to help install the electrics, insulation and general fitting the shed out. Any contributions will be more than welcome.

We will be holding our AGM on 26th January 2024 at 7pm all people who are interest please feel free to come along. Please email Neil McKay at neilmckay0730@gmail.com or text 07717 861319 by 14th January so we know what numbers to expect.

Best wishes, Neil



**A BIG
THANK YOU
to all those who
have helped with
our Christmas Tree
this year**

Special thanks to:

Bob Turk for donating this wonderful tree

Harvey Pilcher & Phil Quinn

Nick Read for use of electric

Bethan & Ed Williams

Eddie Phillips - Electrician

Woodchurch HUB

Woodchurch Parish Council



Woodchurch Carnival Committee would like to wish you and your family a very peaceful and Happy NewYear.

We would like to thank you for the support you gave to the carnival in 2022 and we hope that you will be able to do the same for the next carnival in 2024 (June 8) and as June 6 is the 80th anniversary of D Day, the carnival will have a D Day theme.

This year we are reaching out to you as we really do need your support and help. We would love to hear your thoughts and ideas on how to make this carnival a bigger success than the 2022 carnival.

SAVE THE DATE: - JANUARY 27 2024

This date is the official launch and will be held, as in 2022, in the school hall. There will be a display from D Day to the present day, books to browse, and videos to watch.

There will also be refreshments. We would love to meet you at this event. Please put the date in your diary.

Simple Kent Funerals

Relaxed, flexible, imaginative, economical, caring

Applefield Cottage, Redbrook Street, Woodchurch TN26 3QS

Call Toby on 07806 613297 • www.simplekentfunerals.co.uk

We work in an eco-friendly and environmentally-sustainable way and are certified as a net carbon neutral business