



WOODCHURCH COMMUNITY NEWS

The village community working together

November 2023

Contact us: Telephone 01233 861381 Email enquiries@woodchurchhub.uk Web www.woodchurchhub.uk

OVER 1,000 COPIES distributed every month in the Woodchurch area

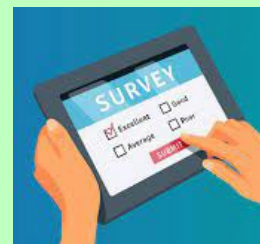
Woodchurch Community Survey 2023

For the first time since 1989, Woodchurch Parish Council is embarking on a comprehensive survey of residents' views. The questionnaires will give you an opportunity to tell the Council about matters of relevance to you and your family. Your responses will help to inform the Parish Council's future plans and the things they can do, either alone or with partners, to improve your quality of life. There are two separate surveys that can be completed – one is a general survey that is relevant to all parish residents, the other is specifically aimed at the youth in the parish.



The survey is not just about seeking the views of the current householders on current issues. The Council is equally interested to hear about the legacy it should leave for future generations. Consequently, we would encourage parents to involve their children, where possible.

At the beginning of November each household in the parish should receive a printed copy of each of the surveys. If you have not received a copy, or would like additional copies of the surveys, please either download or complete the survey online or contact The HUB for a printed copy.



WWW.WOODCHURCHHUB.UK

HUB Volunteers Needed

Due to a combination of holidays and sickness The HUB was unable to open its doors on two days in October. Could you spare some time to join our team of volunteers helping us to support the residents of Woodchurch?

No technical expertise is needed, simply the enjoyment of meeting people, a willingness to help and the satisfaction of knowing that you are making a difference within the village.

If you could spare three hours a week, three hours a fortnight, or just be available on our volunteer reserve list, we would like to hear from you.

The ability to use email and a browser to access information on the Internet would be an advantage, full training is given, and help is always just a phone call away.

Meals on Wheels

Now the colder weather is upon us it is important to ensure that all village residents are able to have a hot meal, especially the elderly or vulnerable.

Woodchurch HUB, working in conjunction with Tenterden Social HUB, organise deliveries of a 2-course hot meal each weekday to Woodchurch residents. If you know someone in the village who would benefit from the meals delivery service, or would like to have then yourself, please contact The HUB for more information.

Meals Delivery Drivers Needed

If you could spare an hour per week to become part of the meals delivery team, or could join the team as a reserve, please contact The HUB.



WOODCHURCH PARISH COUNCIL • **UPDATE** •

Apologies for one of the swings being out of action in the play area. The council has been in contact with several contractors as to the best course of action for the repairs. We appreciate your patience in the meantime.

The "Speed Toolkit" has been deployed at various sites around the village. The plan is to move them around various visible locations, and should act as a gentle reminder of the 30 MPH limit to passing motorists.

As the nights are drawing in, now is a good opportunity for you (or if you have vulnerable family members) to get tips on how to safeguard yourself and your property. You can do this by signing up to Neighbourhood Watch. Peter New is the Neighbourhood Watch volunteer for the Ashford District and can be contacted at 07768 437422 or peternew1@aol.com

Finally, you should all be receiving the Woodchurch Village Survey very shortly. I strongly recommend everyone takes the time to complete this questionnaire and return it, as the findings will have a direct result on how and where the Parish Council focuses its attention. An online version of the survey will also be available on the Woodchurch Hub website home page.

Kind Regards,
Ian Philo, Woodchurch Parish Council Clerk

Parish Council meetings

The next Parish Council meeting will be held on

Thursday 23rd November
7:00pm in the Memorial Hall Annexe

All Parish Council meetings are open to the public so please come along - as we value your questions and suggestions.

We are here to support the village and so it is important that you let us know the things that are important to you

How to contact your Parish Council

In person: By talking to one of your councillors - details on the Parish Council Web site

By email: clerk@woodchurch-pc.gov.uk

By phone: 01233 861381

Through The HUB: Place your correspondence in a sealed envelope marked "Parish Council" and deliver to The HUB

By post to: Woodchurch Parish Clerk, c/o The HUB, Front Road, Woodchurch, Kent, TN26 2PA

Through the contact form on the Parish Council Web site: www.woodchurchhub.uk/parish-council/

Upcoming roadworks in and around Woodchurch

Information from KCC and one.network

Road Closed - Swain Road - near B2067

7th November 2023

Closure in force: Road Closed

Description: Openreach

Road Closed - Plurenden Road

21st November 2023

Closure in force: Road Closed

Description: Openreach

Road Closed - Redbrook Street

1st December 2023

Closure in force: Road Closed

Description: Openreach



**How to report highway problems
including potholes, streetlights and
broken signs**

www.kent.gov.uk/highways



Is your child starting school in September 2024?



Come and visit us for a personalised tour of our exciting and engaging learning environment throughout October and November.

We also have an open evening, with presentation and an opportunity to tour, on Tuesday 7th November at 6pm.

Please call 01233 860232 to book

COMPASSION HOPE FORGIVENESS THANKFULNESS LOVE



Hi Kent, the hearing aid specialists, are coming to the Village Hall on Monday 6th November at 10.30am to coincide with the CARM Meeting Point.

WOODCHURCH SURGERY UPDATE

Wow, this week has run away with me... I'm away next week so super hectic!

It feels that we have been given a bit of breathing space after the intensity of two really busy Flu and Covid clinics, with over 500 people attending for each clinic. We still have Flu jabs available so please book in for these if you are eligible. We will also try and ask people ad-hoc while they are in the building. Due to the high turn-out for the weekend clinics we re-ordered jabs for the under-65 group and still have about 30 left (and about 160 for the over 65s). Please come and use up our stock and if we still have any Covid jabs we can give you one of those too. When we have run out you can still book in at chemists for a free jab if you are in the eligible groups.

We have the ever popular Movember ahead of us. Movember is an annual event that encourages men to grow mustaches during November and raise funds to support men's health issues. It raises awareness about mental health, prostate cancer, testicular cancer, and suicide prevention, motivating people to take action and make positive health changes. I have tried to grow a moustache in the past and any attempt at facial hair is a struggle and makes me very unpopular at home so I will be sponsoring someone else. You don't have to donate money or grow a moustache but just talk more about the things men aren't typically good at such as asking each other if you feel "ok".



The prostate remains a bit of a mystery and we still aren't entirely sure of its' purpose. It sits at the base of the bladder (only in men) and as we get older it grows often causing a bit of obstruction to the outflow. This gives rise to the increasing frequency and urgency to have a pee and leads to having to get up multiple times at night. This benign growth can be a bit annoying but is seldom more than that and is related to general enlargement. Cancers tend to sit more on the edge of the gland and do not typically change how you pee. The only way to know you are safe is to have a blood test for "PSA" and ask a doctor to have a feel of the gland. If there is any doubt we would refer you to a Urologist for an MRI scan and possibly biopsies.

Prostate cancer is now one of the leading causes of cancer death and can be avoided if picked up early. In Europe there is now agreement to screen nationally (as we do for breast, cervical and bowel cancer) but the UK is not currently

screening for prostate cancer. I would urge anyone with a 1st degree family history of cancer (ie dad or brother) to start screening from 50 and other men to consider it from 55-years-old.



Other higher risk groups who should start screening at 50 are people with a body mass index of over 30 and people of black ethnicity. We will write to some target groups in an attempt to reduce inequality in this but otherwise rely on you to step forward. Men, be brave!

Thank you again to all those attending for the Flu/Covid events. Everyone was so patient, kind and helpful to one another which are qualities that Woodchurch is known for and makes it a pleasure for all of us to work for you.

Best wishes to you all on behalf of the Surgery,
Jack Hickey GP

Woodchurch Patients Participation Group (PPG)



Our next PPG meeting is Monday 20th November, 6pm in the Memorial Hall Annexe

All Woodchurch Surgery Patients welcome!

We are pleased to confirm our speaker will be Dr Huw Pinney, Optometrist

If you would like to receive PPG Surgery updates and details of speakers for the meetings, please contact Philippa at

philippaatwoodchurch@btinternet.com


Surgery Opening Hours

Monday to Friday 9am to 5pm



Where to find us...

Hamstreet Dental Clinic
Warehorne Road
Hamstreet
Kent TN26 2JJ

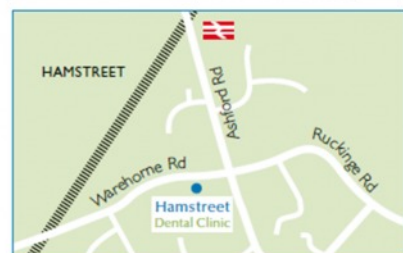
 Find us on facebook



**Hamstreet
Dental Clinic**
Welcomes You



ENLIGHTEN
ACCREDITED
PROFESSIONAL TEETH
WHITENING CENTRE



Tel: 01233 733848
Email: hamstreetdentalclinic@gmail.com



All Saints Church



Dear Friends,

I hope you are all keeping safe and well, and that recent bouts of Covid have subsided by the time you are reading this.



The last few weeks have been difficult for our small team of hard-working volunteers in Woodchurch. Two people had quite serious health episodes whilst on holiday in different places. They and their families have been very much in our thoughts and prayers whilst they recover. Unfortunately, we have had to cancel one or two coffee mornings, and also our fundraising concert "Porch Swing Blues" on 4th November - we are sorry for any inconvenience. My thanks to those who have been helping to cover whilst people are away.

In November we will be remembering those we have loved and lost in our annual All Souls service at 7pm on 2nd November - this year in St Margaret's Bethersden - do come along if you have been bereaved, and let us know if you would like the name of a loved one to be read out - we will light candles for those we remember.

Then on Remembrance Sunday on 12th November we will gather at our village war memorial to remember those who gave their lives during times of war. There will be an Act of Remembrance outside meeting at 10.45am, followed by a service in church in All Saints.

I am delighted to announce that Maria Stuttaford will be joining us in the Benefice of Bethersden with High Halden and Woodchurch as an Assistant Curate, commencing after her ordination as deacon on the weekend of 29th June 2024.

Maria has been training locally for ordination, and she is currently based in Ashford - she has been worshipping and serving in the Parish of Ashford during her training. Maria is married to Graham, and in due course, they will be moving into the curacy house in High Halden. Maria is a great gift to the church, and I have very much enjoyed getting to know her during recent months. I know that you will give Maria and Graham a warm welcome next year.

Blessings to all in Woodchurch

Reverend Sue

It was wonderful to receive this feedback from a couple who were married in All Saints Church earlier this year:

We married in All Saints Church in 2023 and it was one of the best decisions we made. Reverend Sue was very welcoming, accommodating and she made every effort to ensure our ceremony was personal to us and our family. We felt at ease as soon as we met Sue to discuss our initial plans and we realised quite quickly it would be a wonderful service. Our guests have since commented and said 'the service was wonderful, like no other they had been to, fun and relaxed, one of the highlights of the day!' We thank Reverend Sue and the Church flower team in making our day so truly special



We had some lovely village wedding this year, when couples chose to have their receptions in the local pub or in their own gardens. If you live in any of our three villages then you can marry in one of our churches for £600-1000 - please get in touch to find out more.

Reverend Sue

Shadoxhurst Quiz

Join us for a fun and festive evening of quizzing on Friday 1st December from 7pm (quiz begins at 7.30pm) at the Shadoxhurst Village Hall TN26 1HT.

Cost is £2.50 per person (max. 6 per team). Bring your own nibbles. Prizes for the winning team and a Raffle Draw.

Booking is in advance. Please contact Ajlaning61@gmail.com

We look forward to welcoming you.

Woodchurch Village Shed



Hi everyone, just to keep you posted on our slow progress.

We have applied for full planning permission as advised. We were turned down on 3 small issues. We have managed to resolve one fully and we are waiting for ABC to unlock our application to resolve the last two. Hopefully we will be able to do that soon.

Activities have been suspended for a while due to the fact I am on holiday and our other leader has family challenges. All will be back up and running when I get back in November.

There has been plenty of interest shown for this project from people in the village and surrounding area. We are focusing on getting our shed purchased and installed and we then need to look to fund raise to equip our shed fully.

I will keep you posted on our progress.



Citizens Advice Bureau At Woodchurch HUB

Ashford Citizens Advice now holds regular, confidential consultation clinics at Woodchurch HUB on the 2nd Thursday of each month from 1pm to 4pm.

These are walk-in sessions so you do not need to book.
For more information please contact The HUB.

Woodchurch Film Society

Unfortunately the screening of the film "Oppenheimer" in November had to be postponed due to the distributors delaying the launch date of the film to local societies. In its place the Film Society will be showing another great film

The Unlikely Pilgrimage of Harold Fry

Saturday 11th November 6:30pm

Includes fish and chips supper
Bar and Raffle

Tickets available from The HUB
£20



The Six Bells Inn

November is here but where has the year gone ? Clocks have gone back and the winter months have arrived, I have parked up my broomstick for another year as Halloween has passed and Christmas is just around the corner and then 2024!!



But back to November, we have a new date for our quiz night which is Monday 20th and hopefully we have found a day which will suit most people. This will be the last one in 2023 but it will be returning Monday 15th January 2024.

Remembrance Sunday has always been an important day in the lives of so many people and gives us all a chance to think about people who are no longer with us.

Our Festive Menu has been released and if you do wish to book, please do so as soon as possible as many dates are now full. We are still offering our Autumn Menu so if you fancy a break from the Christmas Shopping then a warm welcome, open fire included, awaits you.

The next update will be in December and then it will be Christmas !!

Have a fantastic November and please remember to think of the animals when celebrating Bonfire Night with fireworks.

With love as always, All of us at The Bells x

'Connecting Woodchurch'

At our October meeting, we discussed Village events in the build up to Christmas, as detailed in our Woodchurch Community Calendar.

This helped to promote awareness and also raised opportunities of how some groups/clubs could support each other.

Our community calendar can be accessed here:

<https://www.woodchurchhub.uk/community-calendar/>

or details are all available via Woodchurch HUB

Planning an event open to the public?

Please remember to add to our Community Calendar to help avoid potential clashes.

<https://www.woodchurchhub.uk/community-calendar-event-request/>

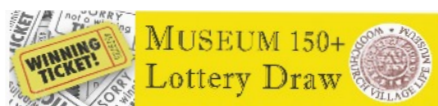
Woodchurch Village Life Museum

Woodchurch Village Life Museum (WVLM) closes its doors for the season at the end of October. The first lottery draw of the new season also takes place now- see below. Thank you to all our subscribers for signing up for another year. If you missed this opportunity, please find extra forms at Woodchurch Hub.



We are still open to all, volunteers and visitors, from 10-12 on Wednesday mornings and also by appointment at other times. Email enquiries@woodchurchheritagetrust.uk or phone 01233 860586 for more information.

To have such a unique resource as WVLM and Study Centre in the village is a wonderful asset and much under-used. Hope to see you soon.



Thank you for everyone who has continued to support the Museum by subscribing to our 150+ lottery draw for 2023/4.

Tickets are still available for the remainder of the year

For more information please contact Joyce via The HUB -
enquiries@woodchurchhub.uk or 01233 861381

October 2023 Draw Results

1st prize	£50	Alison Faires	328
2nd prize	£30	K and W Hookey	1172
3rd prize	£20	Chris Dudman	581

Woodchurch Football Club



Woodchurch Football Club have home games every Saturday in November, we are waiting to see who we are playing but Kick off is 2pm every week.



Our Sunday team has now moved pitch to Appledore due to the weather, but we'd still love some 'Home' support!

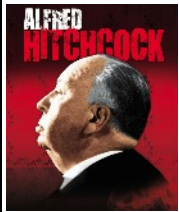


Our seniors Christmas meal is 21st November.

Delia Taylor was the speaker at our October meeting, with a talk and power point presentation entitled "The Golden Age of Hollywood," which, we learnt, lasted from the 1930s until the 1960s.



In America the Wall Street Crash of 1929 was followed by the Great Depression when 12 million people were out of work, 12,000 people were made unemployed every day and one farmer in twenty was evicted. In addition 20,000 companies and 1,616 banks went bust, the highest number of people (23,000) in one year committed suicide, and breadlines became a common sight in many cities. Some families even offered their children for sale! And yet, the cinemas thrived and, ultimately, survived, on account of many Americans (approximately 80 million) turning to the cinema as a very welcome form of escapism!



An outing to the movies was still relatively cheap and sometimes the price of a ticket included a meal. The 5 major film studios and 3 smaller ones were all situated in Hollywood, where movie making prospered with high profits, popular stars and brilliant film makers, so that the 1930s and 1940s produced some of the greatest films in cinema history and featured some of the biggest names. Three of these most iconic films created during this time were "The Wizard of Oz," starring Judy Garland, "Gone with the Wind," starring Clark Gable and Vivien Leigh and the cartoon animation of "Snow White and the Seven Dwarves". Perhaps they seemed more magical than previous films, because of the excellent story telling, or it could have been due to the improved quality of sound and the new Technicolor. Also the music written for the movies of the period, as well as the dance routines, consistently matched the artistry of the films themselves and greatly added to the "feel good" factor, which was so much in demand during the Depression and later on, in the war years.

Sadly, however, all too soon our Tuesday night visit to the movies had to end with a magnificent, musical swimming display! Thank you, Delia, for such an interesting and cheering presentation on a misty, autumn evening.

Next month, on Tuesday 14th November at 7.15 pm in the Memorial Hall we are looking forward to meeting our local vicar, Mike Rose. He intends to enlighten us on his path to becoming a vicar; a talk which promises to be simultaneously humorous and thought provoking. The competition will be "Something all White". Please do join us if you can!

Six Bells Park

Residents of Six Bells Park celebrated Halloween by having a fancy dress party at Six Bells pub. Everyone made a great effort with their costumes and also with the pumpkin carving. Well done to all.

The next event will be the Christmas light up in December.

Christmas Market at The Memorial Hall and Annexe, Woodchurch

**Saturday 25th November
10:30-2:00pm**



Do come and buy your Christmas presents and decorations from our local craft stalls.

Stalls include:

Crafts, Tombola, Competitions, Books,
Cakes.

Refreshments will be served: tea, coffee,
squash and home-made cakes.



Organised by Woodchurch WI

Woodchurch Local History Society



The Woodchurch Local History Society normally meets on the first Monday of the month in the village Memorial Hall at 7:30pm. Our next meeting is on Monday November 6th, 7:30pm when we welcome Pete Allen who will be presenting his illustrated talk entitled '**Not Coming Soon. The Greatest Movies NEVER Made**'.

In Pete's words "Ever wondered whether it was the start of a beautiful friendship between Rick and Louise?



Whether even James Bond could have saved New York from sharks armed with nuclear warheads? Or whether Alfred Hitchcock might have planned for a judge accused of murder? History remembers the great (and not so great) movies that were made ...but what about the ones that never made it to the starting line?"

Pete is very familiar with the entertainment industry and must be party to a lot of 'inside' information. So, I'm sure this will be a very entertaining evening, especially if he has some clips from these unknown films.

Visitors are very welcome indeed and pay £3 at the door. There is no need to book - just turn up on the night. Hope to see you then.

On Monday December 4th we are happy to welcome Wayfarer Wines for an evening of wine tasting and Christmas nibbles. More details will follow in the next issue of this publication.

For more information contact Geoff on 01233 860393.



Woodchurch on The Green **CHRISTMAS TREE LIGHTING CEREMONY**

Carol Singing and Woodchurch Morris Men

Something for the whole family including our

CHRISTMAS MARKET

*Lots to enjoy including Christmas Raffle,
Steam Engine, Craft Stall, Local Wines,
Mulled Wine, Mince Pies, Hot Dogs, Waffles,
Hot Chocolate and Marshmallows.*

Saturday, 2nd December 2023

3pm 'til 6pm (Tree switch on 5pm)

ON THE GREEN AND IN THE CAR PARK

Did you or any of your Family Belong to Woodchurch Scouts?

**We are opening our archives of
photographs from over 40 years of the
Scouts history.**

**Woodchurch Scout and Guide Centre
11th November 2023 2-4 pm**

**Come along and meet up with some old
friends and maybe find yourself in some
of photographs of years gone by.**

Refreshments will be available

**Woodchurch Scout and Guide Centre
Lower Road, Woodchurch, TN26 3SQ**



With months to go till Christmas the Carnival team has been working hard behind the scenes to bring you Carnival 2024. The 8th June 2024 is the day set for the event and we hope that it is as successful as Carnival 2022. The day was chosen due to it coinciding with the national D-Day anniversary plan and this helped to set the theme.

A small team have been looking at how to maintain the carnival for future generations and part of that is applying for charity status.

Food stalls were the biggest area of feedback from 2022 (excuse the pun). We already have plenty of stalls booked for 2024 and an area of The Green will be set aside for food alley. The display arena is also looking busier and will include a number of interactive displays. If you have a group or would like to have a slot in the arena, let us know.

The parade will also be taking place and we hope that many will take part, opened by our friends from the Repair Shop.

All the other fun stuff with the stalls, fair and this coming event an "Open Mic" spot prior to the bands starting.

We will be officially launching the event 27th January 2024 at Woodchurch Primary School with an open day, so please get your thinking caps on so that you can support this great day in the village calendar.

Find us on Facebook, Instagram and website.



Guides and Brownies continue to meet on Wednesday evenings. From 6pm till 7.15pm.

We welcome girls from their 7th birthday. If you would like to come and join us we return on 1st of November. We have an exciting programme leading up to Christmas. Come and make new friends and have fun.



We have had a fun autumn term with 4 new girls starting and looking forward to a busy few weeks leading up to Christmas.

Girls can join us from age 4 (reception class) till aged 7. If you would like to join us we return on 1st November 5pm till 6pm.

For more information contact Tracy on [01233 861236](tel:01233861236) evenings.



Lemon Tea Reflexology

Relax & Recharge

Book a treatment today
Home visits available

Full member of the AoR
Elizabeth Langley MAR

01233 510952

lizzy@lemonteareflexology.com
Lemonteareflexology.com

To help keep the Newsletter free for the village
please become one of our sponsors, or give a
donation if you can.
www.woodchurchhub.uk or contact The HUB

M.O.S LANDSCAPES

Your Local Hard Landscaping Team

•Garden rooms & Sheds •Patios & Paths •Returfing
•Decking & Pergolas •Fencing •Garden maintenance

07701 389 265 / 07485 178 562
contact@moslandscapes.com

COUNTRY STYLE

Christmas

AT ERNEST DOE POWER

Pop in store and take a look or shop online at ernestdoeshop.com
Hendon Barn, Woodchurch, Ashford, Kent TN26 3QP Tel: 01233 224860

 **ernestDOEpower**

WoodchurchYardTogether(“WYT”)

Our next volunteer gardening weekend in the
Churchyard is:

18th & 19th
November

TENTERDEN GARDEN CENTRE

THURSDAY 23RD NOVEMBER 5.30PM – 8.30PM

Christmas LATE NIGHT SHOPPING

10% OFF ACROSS THE STORE!
LARGE, FREE CAR PARK
COMPLIMENTARY FESTIVE TREAT & MULLED WINE*
MUSIC TO SHOP BY WITH THE DUKES OF SWING DUO
TENTERDEN LIONS FLOAT
BENENDEN PRIMARY SCHOOL CHOIR
TRACKLEMENTS CONDIMENTS TASTING TABLE
FREE PRIZE DRAW TO WIN £100, £50 OR £25 GROVEWELL GARDEN CENTRE VOUCHERS
*18yrs+ only, alcohol free option will be available. One per person only

GET A HEAD START ON YOUR CHRISTMAS SHOPPING
Eat, drink and shop until late!
DINE WITH US
Table reservations from 6.30pm

ONE NIGHT ONLY FESTIVE BURGER & DRINK £15.95

APPLEDORE RD, READING STREET, NR. TENTERDEN, KENT, TN30 7HT
CALL: 01233 758510 | INFO@TENTERDENGCC.CO.UK
☆☆☆ WWW.GROVEWELLOC.CO.UK ☆☆☆



Keeping in Touch:

Email:

woodchurchYardTogether@btinternet.com

Or follow us on Facebook



Search: 'WoodchurchYard Together'

Village Lost Property at The HUB

If you find any lost property around the village please bring it to The HUB. If you have lost something around the Village please let The HUB know as it may have been handed in.

Everything **Outside**

Bringing New Life
To Your Garden

For A Quick Quote From A Company You Can Trust Call

☎ 01580 766 232 ☎ 07795 465 861

Welcome To Everything Outside

We cover a wide range of services to meet the requirements of our ever-growing client list, if you are looking for a company you can trust to provide a high standard of quality work covering

- ✓ Gardening
- ✓ Garden Design
- ✓ Fencing
- ✓ Clearance
- ✓ Landscaping
- ✓ Hedge Cutting
- ✓ Tree Surgery
- ✓ Digger Work

and much more. Then call our experienced team today on 07795 465 861. To view our full range of services, click on the link below.

Our head office is based in Tenterden, Kent and means we are in the perfect location to proudly service Kent and East Sussex. All our services are tailored to each job we carry out and our team are experience in all aspects of fencing and landscaping services making us your number one choice for all work you require.

Great Work

Great Reputation

Great Price



Design, planning & build services

Now offering full 3d design development for your extension, new build or conversion project.

Please call us for an introduction to our design services at our Woodchurch office.

01233 861177 vernacularhomes.com



OUR SPONSORS

fab feet
Professional Foot Healthcare

www.fabfeethealthcare.co.uk

Delivering high quality Podiatric care in the
comfort of your own home

Providing a reliable and friendly service of professional
treatments for all of your foot ailments:



Call Michelle on:

Tel: 01233 731207

Registered & Insured



muscle whisperer

Remedial massage therapy.

Your Local Woodchurch Massage Therapist

- Remedial Massage
- Sports Massage
- Holistic Massage

- Ultrasound Therapy
- Electrotherapy

- Injury Treatments & Rehabilitation
- Rehabilitation Taping/Strapping
- Athletic Taping/Strapping



Bookings - 07799221043

www.musclewhisperer.org.uk

Treatment Room - Little Vale TN26 3QW



musclewhisperer@outlook.com



Karen Stevens

Massage and Reflexology

Massage and Reflexology from my treatment room in Woodchurch

To book or to discuss your treatment needs call me on:

☎ 07808675251

Dolmen Conservation & Joinery Ltd

Seasoned Logs, ready to burn

**Sustainably sourced logs
delivered to your door**

Call Jack on **07804 881461**

for prices and delivery - or visit
The Woodland Centre,
Warehorne Road, Woodchurch
(next to the Rare Breeds Centre)



B.T.C

Ben Taylor Carpentry & Construction

07585509817

All aspects of carpentry and construction

- extensions
- porches
- bespoke fitted furniture
- patios
- fencing and landscaping and much more



B.T.C



b_t_c_construction



07585509817



Woodchurch Cottage Flowers

We are an artisan florist and flower grower. We grow and sell the most amazing seasonal English flowers. All grown here at our smallholding in Woodchurch in Kent. We are a small flower farm working with nature and the seasons.



Call or text 07960 449235

www.woodchurchcottageflowers.co.uk



The Woodchurch Community News is distributed **free of charge** to over 1,000 houses each month in Woodchurch and surrounding areas. If you would like to become an advertising sponsor then please visit The Woodchurch HUB Web site - **The HUB > Newsletter Advertising**

If you would just like to help us with the costs of production please go to **The HUB web site** and click the **"Donate"** button.

KENT HOLIDAY COTTAGES

+44 (0) 1233 860 293

info@kentholidaycottages.co.uk



WOODCHURCH

SHOP ✿ BAR ✿ WINE TASTING ✿ TOURS

Thursdays to Sundays 11am - 5pm

<http://woodchurchwine.co.uk> tel:01233 860276

D K Plastering Services

All plastering work carried out



Fully Insured Professional Workmanship

For a clean & tidy job call David

Mobile

07974 891795

Or Email

dk.plastering@hotmail.co.uk

You could advertise your company here from as little as £10 per month

ETHAN JOHNSON

CARPENTRY, JOINERY AND RESTORATION

Free Estimates

07484 173957

ethanjohnson303@gmail.com

Experienced in bespoke made to measure projects and working to preserve original features of older buildings . We Undertake wide variety of projects.



Christmas Tea

MONDAY | 25 DEC | AT 3.00 PM

AFTERNOON TEA

The Jean Mealham Centre,
Lower Road, Woodchurch
TN26 3SQ



Boxing Day

LUNCH &
KEYBOARD MUSIC

TUESDAY
26 DECEMBER | AT 12:00 PM

THE JEAN MEALHAM CENTRE,
LOWER ROAD, WOODCHURCH
TN26 3SQ

PLEASE CONTACT RICHARD TO BOOK
YOUR PLACE 07798 566849



CHRISTMAS Gift Market

Saturday and Sunday
November 25th - 26th
10:00 am - 4:00 pm
in the Benson Barn

at the
Rare Breeds Centre

Gifts
Sweets
Toys
Crafts
Raffle & Tombola

Highlands Farm, Woodchurch, Kent TN26 3RJ
RareBreeds.org.uk | 01233 861 493



WOODCHURCH MEMORIAL HALL

QUIZ NIGHT

RAFFLE GREAT PRIZES

Saturday 18th November

7 for 7.30pm start - Teams of up to 6

£5 per person - Prize for winning team

To book a table phone Joy Rubie 01233 861483

Bar available all evening



CHRISTMAS CAROLS

Join us for a carol singalong,
organ concert by
Chris & Jo Powell, festive lights,
mulled wine, delicious treats
& good cheer!

FRIDAY 22ND DECEMBER
6:00-8:00 PM

The Jean Mealham Centre
Lower Road,
Woodchurch TN26 3SQ

Donations welcome



SHISEIKAI Karate dojo in Woodchurch

志誠

SHISEIKAI

WOODCHURCH SHOTO-RYU KARATE-DO

全英国松涛流空手道志誠会ウッドチャーチ道場

If you have ever been interested in martial arts please come
along to the Jean Mealham Centre on:

Tuesdays 7pm-9pm
Thursdays 7pm-9pm
Sundays 10am-noon

For more information contact Mark Carley on 01233 861395

Items For Future Newsletters

If there is something that you would like to have included in future editions then please send them to:
enquiries@woodchurchhub.uk

Wildlife around Woodchurch - 18th October

This magnificent deer was seen nonchalantly walking along the road between Woodchurch and Shadoxhurst, seemingly unaware of the traffic chaos that it was causing.



Please find a link to our latest
Annual Report



<https://carmromneymarsh.org.uk/about-carm/annual-report/>

I hope that you have a few minutes to read the report, it really showcases all that CARM achieved in the year 2022/23 - we have an amazing group of volunteers supporting us to put a smile on people's faces.

Thank you for your continued interest in CARM.
Best wishes, Helen.

WOODCHURCH Community Calendar



Weekly events:

Saturdays:

Boot Camp 9:00am-10:00am on the Village Green

Sundays:

Outpost Church 10:00am-12:00pm in the S&G Community Centre, Lower Road

Karate 10:00am-12:00pm in the Jean Mealham Centre

Mondays:

Pilates 9:00am-10:00am in the Memorial Hall

Tai Chi and Qigong 9:45am and 10:45am at the S&G Community Centre

Baby Yoga 1:00pm-2:15pm in the Memorial Hall

Knit and Natter 2:00pm - 3:30pm in the Jean Mealham Lodge

Line Dancing 2:30pm - 4:30pm in the Jean Mealham Centre

Beavers 6:00pm-7:00pm in the S&G Community Centre

BodyTone 6:15pm-7:00pm at the Memorial Hall

BodyFlex 7:15pm-8:00pm at the Memorial Hall

Scouts 7:30pm-9:00pm in the S&G Community Centre

Tuesdays:

Pilates 9:00am-10:00am, 10:15am-11:15am and 6:00pm-7:00pm in the Memorial Hall

Yoga 10:00am-11:15am in the Jean Mealham Studio

Coffee Morning 10:00am-12:00pm in All Saints Church

Little Leaves Forest School 10:00am - 12:00pm under 5's Play Group based in Woodchurch

Puzzle Club 2:00pm-4:00pm in the Jean Mealham Lodge

Cubs 5:30pm-7:00pm in the S&G Community Centre

Karate 7:00pm-9:00pm in the Jean Mealham Studio

Wednesdays:

Pilates 9:00am-10:00am in the Memorial Hall

Museum Volunteers - maintenance and gardening 9:30am-12:00pm at the Museum

Yoga 10:00am-11:15am in the Jean Mealham Studio

Over 60s Pop-In 2:00pm-4:00pm Tea and coffee and boot fair marquee at the Jean Mealham Centre

Blend Youth Cafe 3:00pm-5:00pm in All Saints Church Term only

Rainbows 5:00pm-6:00pm in the S&G Community Centre

Fish and Chips 4:30pm-7:30pm in the Village Car Park

Brownies and Guides 6:00pm-7:15pm in the S&G Community Centre

Wednesdays continued:

Morris Dancing Practice 8:00pm-9:30pm in the S&G Community Centre

Thursdays:

Art Society 10:00am-1:00pm at the Memorial Hall

Margaret Morris Movement 2:15pm-3:15pm in the S&G Community Centre, Lower Road

BodyBlast 6:30pm-7:20pm on the Village Green

Badminton 7:00pm-11:00pm at the Memorial Hall

Karate 7:00pm-9:00pm in the Jean Mealham Centre

Explorers 7:30pm-9:30pm in the S&G Community Centre

Fridays:

Little Leaves Forest School 10:00am - 12:00pm under 5's Play Group based in Woodchurch

Other Events:

Thu 2nd **Social Prescribers Surgery** - 1:00pm-4:00pm in The HUB

Sun 5th **Benefice Service** - 11:00am at All Saints Church

Mon 6th **CARM and Hi Kent Hearing Aid support** - 10:30am in the Memorial Hall

Six Bells Quiz Night - 7:00pm at the Six Bells

WLHS "Pete Allen - Not coming soon" - 7:30pm in the Memorial Hall

Tue 7th **Primary School Open Evening** - 6:00pm at the school

Wed 8th **Borough Councillors surgery** - 11:00am-12:00am at The HUB

BCP Holy Communion - 12:00pm at All Saints Church

Thu 9th **Citizens Advice surgery** - 1:00pm-4:00pm in The HUB

Sat 11th **Scout and Guide archives** - 2:00pm at the S&G Community Centre

Film Night "The Unlikely Pilgrimage of Harold Fry" - 6:30pm at the Memorial Hall

Sun 12th **War Memorial** - 10:45am at All Saints Church

Remembrance Service - 11:00am at All Saints Church

Tue 14th **WI - "My path to becoming a vicar"** - 7:15pm in the Memorial Hall

Thu 16th **Social Prescribers Surgery** - 10:00am-12:00pm in The Jean Mealham Centre

Sat 18th **WYT Church tidy up weekend** (and Sunday) at All Saints Church

Sun 19th **Morning Worship** - 11:00am at All Saints Church

Evensong - 4:00pm at All Saints Church

Mon 20th **PPG Meeting** - 6:00pm in the Memorial Hall Annexe

Thu 23rd **Parish Council Meeting** - 7:00pm in the Memorial Hall Annexe

Fri 24th **Ashford Astronomical Society** - 7:00 in the Memorial Hall

Sat 25th **Christmas Gift Market** - Rare Breeds Centre (and Sunday)

WI Christmas Market and Coffee Morning - in the Memorial Hall

Sun 26th **Holy Communion** - 11:00am at All Saints Church

Thu 30th **Community Survey - deadline for return**

Simple Kent Funerals

Relaxed, flexible, imaginative, economical, caring

Applefield Cottage, Redbrook Street, Woodchurch TN26 3QS

Call Toby on 07806 613297 • www.simplekentfunerals.co.uk

We work in an eco-friendly and environmentally-sustainable way and are certified as a net carbon neutral business