



WOODCHURCH COMMUNITY NEWS

The village community working together

August 2023

Contact us: Telephone 01233 861381 Email enquiries@woodchurchhub.uk Web www.woodchurchhub.uk

OVER 1,000 COPIES distributed every month in the Woodchurch area

WOODCHURCH Community Calendar



Weekly events:

Saturdays:

Boot Camp 9:00am-10:00am on the Village Green
Woodchurch Museum Open 10:00am-4:00pm

Sundays:

Outpost Church 10:00am-12:00pm in the S&G Community Centre, Lower Road
Karate 10:00am-12:00pm in the Jean Mealham Centre
Woodchurch Museum Open 10:00am-4:00pm

Mondays:

Pilates 9:00am-10:00am in the Memorial Hall
Tai Chi and Qigong 9:45am and 10:45am at the S&G Community Centre
Baby Yoga 1:00pm-2:15pm in the Memorial Hall
Knit and Natter 2:00pm - 3:30pm in the Jean Mealham Lodge
Line Dancing 2:30pm - 4:30pm in the Jean Mealham Centre
Junior Tennis Coaching 3:30pm-7:30pm on the Tennis Courts
Beavers 6:00pm-7:00pm in the S&G Community Centre
BodyTone 6:15pm-7:00pm at the Memorial Hall
BodyFlex 7:15pm-8:00pm at the Memorial Hall
Scouts 7:30pm-9:00pm in the S&G Community Centre

Tuesdays:

Pilates 9:00am-10:00am, 10:15am-11:15am and 6:00pm-7:00pm in the Memorial Hall
Yoga 10:00am-11:15am in the Jean Mealham Studio
Coffee Morning 10:00am-12:00pm in All Saints Church
Little Leaves Forest School 10:00am - 12:00pm under 5's Play Group based in Woodchurch
Community Warden 1:00pm-3:00pm in the HUB
Puzzle Club 2:00pm-4:00pm in the Jean Mealham Lodge
Cubs 5:30pm-7:00pm in the S&G Community Centre
Karate 7:00pm-9:00pm in the Jean Mealham Studio

Wednesdays:

Pilates 9:00am-10:00am in the Memorial Hall
Museum Volunteers 9:30am-12:00pm at the Museum
Yoga 10:00am-11:15am in the Jean Mealham Studio
Over 60s Pop-In 2:00pm-4:00pm Tea and coffee and boot fair marquee at the Jean Mealham Centre
Blend Youth Cafe 3:00pm-5:00pm in All Saints Church Term only
Rainbows 5:00pm-6:00pm in the S&G Community Centre
Fish and Chips 4:30pm-7:30pm in the Village Car Park
Brownies and Guides 6:00pm-7:15pm in the S&G Community Centre
Morris Dancing Practice 8:00pm-9:30pm in the S&G Community Centre

Previous editions of the Newsletter can be found on The HUB Web site
www.woodchurchhub.UK



Thursdays:

Art Society 10:00am-1:00pm at the Memorial Hall
Margaret Morris Movement 2:15pm-3:15pm in the S&G Community Centre, Lower Road
BodyBlast 6:30pm-7:20pm on the Village Green
Badminton 7:00pm-11:00pm at the Memorial Hall
Karate 7:00pm-9:00pm in the Jean Mealham Centre
Explorers 7:30pm-9:30pm in the S&G Community Centre

Fridays:

Soup Fridays 12:00am-2:00pm in the Jean Mealham Centre
Adult Tennis Coaching 5:30pm-6:30pm on the Tennis Courts

Other Events:

Wed 2nd **Six Bells Quiz Night** - 7:00pm in The Six Bells
Thu 3rd **Social Prescribers Surgery** - 1:00pm-4:00pm in The HUB
Fri 4th **Steam Engine Road Run** - All day in Woodchurch and surrounding villages
Sat 5th **Weald of Kent Steam Rally** - All day
Football Woodchurch v Ticehurst - 2:00pm on the Village Green
Sun 6th **Weald of Kent Steam Rally** - All day
Holy Communion - 8:00am at All Saints Church
Football Woodchurch v Egerton - 2:00pm on the Village Green
Abba Chique Concert - 7:30pm at the Jean Mealham Centre
Mon 7th **CARM** 10:30am to 12:30pm in the Memorial Hall
Wed 9th **Borough Councillors surgery** - 11:00am-12:00am at The HUB
Thu 10th **Citizens Advice surgery** - 1:00pm-4:00pm in The HUB
Sat 12th **Football Woodchurch v Hawkhurst** - 2:00pm on the Village Green
Sun 13th **Baptism** - 1:00pm at All Saints Church
Evensong - 6:00pm at All Saints Church
Tues 15th **WI visit to Woodchurch Cottage Flowers** - 2:30pm
Sat 19th **WYT Church tidy up weekend** (and Sunday) at All Saints Church
"Village Garage Sale" - Around the village
Craft Fair - Jean Mealham Centre
Summer family fun - 2:00pm-5:00pm at All Saints Church
Football Woodchurch v Skippers - 2:00pm on the Village Green
Sun 19th **Morning Worship** - 11:00am at All Saints Church
Mon 21st **PPG Meeting** - 6:00pm-7:00pm in the Memorial Hall Annexe
Tue 22nd **Music at The Six Bells - "Tall Trees"** - 7:00pm
Thu 24th **Parish Council Meeting** 7:00pm in the Memorial Hall Annexe
Fri 25th **Ashford Astronomical Society** - 7:00pm in the Memorial Hall
Sun 27th Benefice Holy Communion -11:00am at All Saints Church
Thu 31st **Citizens Advice surgery** - 1:00pm-4:00pm in The HUB

WOODCHURCH SURGERY UPDATE

I am thoroughly enjoying my time on a family break away this week. I curiously asked the group about any topics for the monthly murmurings and it stimulated some research into the health benefits of taking a holiday. If you can eliminate the stress of packing, travelling, remembering passports and the favourite jumper/teddy then it appears to be a very healthy thing to do. Among the benefits are reducing stress, preventing burnout, making your life more productive, diversifying diet, expanding social bonding and improving fitness. On a practical level it means trying a different style of cooked egg every day and putting on a few pounds.

I see that "cataract awareness" is a health event for August. A cataract is a build-up of proteins in the lens of the eye that causes the light to scatter or be blocked from getting through to the retina at the back of the eye. It makes vision more cloudy so images can be blurred and particularly causes lights at night to appear as having halos around them so driving becomes very difficult. You are more likely to develop cataracts with exposure to UV light, use of steroids, drinking excessive alcohol and having diabetes and high blood pressure. A very quick test is to try looking through a small pin-hole to see if an image is clearer with each eye. If it is then it may be worth seeing an optician for a check-up.

The most basic treatments in days gone by included hitting the eye very hard to dislodge the clouded lens from its' fixings so that the light could reach the retina. There are surgical references dating back as far as 600BC which all must have been pretty painful and resulted in pretty poor vision. The trick was to replace the lens but any foreign body in the eye used to result in infections and reactions. It wasn't until the 1940s that Dr Harold Ridley noticed an Airforce pilot sustained an injury from the plastic canopy and didn't react to it that he started to experiment with plastic lens replacements. It didn't entirely go well but it led to developments to introduce silicone implants in 1978. These days you can have lenses inserted with prescriptions to correct near and distance vision. It is a pretty incredible adventure for eye care.

The big news from the surgery is that flu clinics will be starting again soon. We don't entirely know what is going on with Covid jabs so we are only referencing seasonal flu. The cohorts are slightly different this year and sees the age range go back up a little - so... If you are over 65 years old or have a chronic health condition under the age of 65 then you should get jabbed. We are changing it up a little this year by doing 2 big walk-in clinics for our patients on Saturday 16th September 8am to 1pm and Saturday 7th October 8am to 1pm and then some evening pre-booked clinics. These have worked really well within the PCN and will be busy but should be fun to do. We will, of course, be putting up posters to advertise widely.

We see a small change in personnel with Dr Mukundh

Puthoor leaving us after 2 years with us a trainee. He will be continuing his training at Hamstreet which is nice to keep him local. We continue to have Dr Lauren James with us as she enters her third year of GP training and we expect a first-year trainee to join us and I'm sure she will experience the generous welcome you extend to all of our trainees.

I hope you are all getting a break of some sort in the summer to maintain your health. Just be careful of all that UV light and too many of those cataract risks.

Best wishes on behalf of the Surgery, Jack Hickey GP

Social Prescribing

Are you worried about a friend or relative - do they suffer with mental or physical health needs? Do you find you are struggling with day to day tasks or having difficulties with your mobility or managing your care needs? We can offer support and guidance on services and support for you and your family whether it's a blue badge, benefits or community engagement.

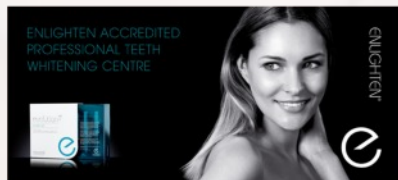


We are in The HUB the first Thursday of each month from 1pm to 4pm so please pop along to meet with a team member who will be more than happy to discuss further.

Social Prescribing coffee mornings are also held at Hamstreet Surgery, Charing Surgery and Ivycourt Surgery.

Surgery Opening Hours

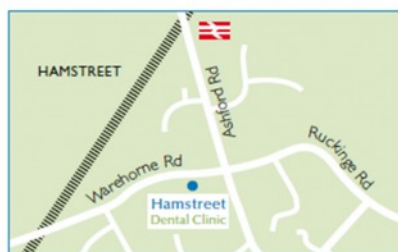
Monday to Friday 9am to 5pm



Where to find us...

Hamstreet Dental Clinic
Warehorne Road
Hamstreet
Kent TN26 2JJ

Find us on facebook



Tel: 01233 733848

Email: hamstreetdentalclinic@gmail.com

Woodchurch Patients Participation Group (PPG)

Our next PPG meeting is Monday 21st August, 6pm in the Memorial Hall Annexe



All Woodchurch Surgery Patients welcome!

We are pleased to confirm our speaker will be Dr Laura Smith, Lecturer in Psychology at the University of Kent and she will be talking about research into Parkinsons

Future Meeting dates: Monday 20th November

If you would like to receive PPG Surgery updates and details of speakers for the meetings, please contact Philippa at philippaatwoodchurch@btinternet.com

Remembering Charles Vertue

Following the sad passing of Charles on 2nd June, we remember the significant difference Charles made to our Patient Participation Group and the humour and friendship he always brought with that.



Charles became Vice Chair when the Group first started in 2011 and then took over as Chair in 2014, before resigning from the role at the end of 2018.

Charles's words that he wrote for the Parish Magazine in November 2018, when he resigned from the role, perfectly summarise the success that he himself created and we aspire to continue.

'At present the Group has just under 100 members and provides a valuable link between our excellent Surgery and its patients. Meetings are held every 2 months at the Bonny Cravat and include a guest speaker. Talks in the past have covered such areas as Diabetes, Macular Degeneration and Cataracts, Arthritis, the Pilgrims Hospice and are nearly always interesting and instructive.'

THANK-YOU CHARLES - Our thoughts are with Tor and all the family.

Woodchurch Players News

Rehearsals are going well for the 'Musical Extravaganza' - Tickets now available from the Hub.



An evening of Caberet & Comedy - sketches and music.

Seating will be at tables and includes supper

Friday/Saturday 22nd/23rd September

Woodchurch Yard Sale on Saturday 19th August....
(after our costume loft clear-out) visit Woodchurch Players stall at 25 The Green for costumes and swatches of material.

Woodchurch Village Shed



Woodchurch Village Shed had it's first meetings in the month of July. The first one was really to see what we could try and achieve before we actually get our shed. One of the things that helped us get off the mark was the fact the Community Centre was hosting a 2 weeks camp for scouts from Canada and Germany.

As a result 7 members all pitched in the give the Community Centre and some of its ground a bit of a spruce up.

Collectively we put in around 14 man / lady hours in hedge trimming, weeding, path trimming and leaf clearing which, hopefully, made the place look a little tidier.

Another idea is to approach the school to see if there are any projects we could help or sort out. Again, we hope that we may be able to contribute to improvements at the school, watch this space.

We are also trying to timetable the ordering of our shed and the plans to install it.

With luck, next month we maybe able to add more good news.

For more information email - neilmckay0730@gmail.com or phone [07717861319](tel:07717861319).

WOODCHURCH PLAYERS

SHOW DINNER & TICKET £15

TICKET £15

EVENING OF CABARET & COMEDY

A musical evening of songs, dance and sketches. Including *Jacket potatoes* various fillings and pudding. There will be a Bar for wine and soft drinks along with a raffle. Cards and cash accepted

22 & 23 September

Woodchurch Memorial Hall, Woodchurch, Kent TN26 3PF

Tickets available at: WoodchurchPlayers.co.uk
Box Office: 01233 861 381

KCC are running a consultation on proposed changes to our Community Warden service. As Cathy Carter, our current Community Warden, is retiring in October it is important that the views of Woodchurch residents are taken into account. Please pick up a consultation document or visit the link below.

Kent Community Warden Service Review

Consultation document and questionnaire



Have your say!

We are proposing to make savings by redesigning the Kent Community Warden Service.

Find out more and tell us your views at
kent.gov.uk/communitywardenreview

Consultation open from 12 July to 3 October 2023.



Parish Council meetings

The next Parish Council meeting will be held on

Thursday 27th July

7:00pm in the Memorial Hall Annexe

All Parish Council meetings are open to the public so please come along - as we value your questions and suggestions.

We are here to support the village and so it is important that you let us know the things that are important to you

How to contact your Parish Council

In person: By talking to one of your councillors - details on the Parish Council Web site

By email: clerk@woodchurch-pc.gov.uk

By phone: 01233 861381

Through The HUB: Place your correspondence in a sealed envelope marked "Parish Council" and deliver to The HUB

By post to: Woodchurch Parish Clerk, c/o Woodchurch HUB, Front Road, Woodchurch, Kent, TN26 2PA

Through the contact form on the Parish Council Web site:

www.woodchurchhub.uk/parish-council/



WOODCHURCH PARISH COUNCIL · **UPDATE** ·

The Parish Council would like to thank Aniko Szocs for all of the excellent support she has provided Woodchurch in her role as Clerk. The Parish Council are currently in the process of recruiting a new Clerk and RFO and we hope to be able to make further announcements soon.

Many areas of Woodchurch do not currently have an active registered Neighbourhood Watch scheme and we will be working with Peter New to try to reestablish one in the village. As with all community schemes, Neighbourhood Watch is dependent on local volunteers to set up and manage. If you are willing to lead the Community Neighbourhood Watch group for Woodchurch then please contact The HUB. More information regarding what is involved can be found at www.ourwatch.org.uk or you can contact Peter direct for more information:

Peter New (peternew1@aol.com) 91725 Kent Police Volunteer & Community Neighbourhood Watch



Upcoming roadworks in and around Woodchurch Information from KCC and one.network

Road Closed - Appledore Road Woodchurch - Bench Hill **20th July - 21st August 2023**

Closure in force: Road Closed
Description: KCC Surface Dressing Programme
Diversion via B2067

Roadworks - Redbrook Street **31st July - 2nd August 2023**

Closure in force: Traffic lights
Description: Highways, Pothole repairs

Roadworks - The Street, Appledore **8th - 9th August**

Closure in force: Traffic lights
Description: Southern Water utility works

Road Closed - Ashford Road Hamstreet **26th - 27th August 2023**

Closure in force: Road Closed
Description: Network Rail works

Roadworks - The Street, Appledore **29th August - 11th September**

Closure in force: Traffic lights
Description: Southern Water utility works



How to report highway problems including potholes, streetlights and broken signs

www.kent.gov.uk/highways

All Saints Church



Dear Friends,

I mentioned last month that we are looking to provide more contemporary and family services alongside of our more traditional services. I hope that you can join us for our new 5@10 service on Sunday 30th July at 10am in All Saints. We will be starting with a breakfast snack and hot drinks, then enjoying some modern worship songs, a story and talk, prayers, and a shortened communion service. The service is for all ages, and we have plenty of toys in church for younger family members. If you missed this time, then we have a service on the farm in High Halden planned in September, and 5@10 will be back in October.



We try to provide a variety of services, and if you prefer the more traditional, then our BCP (Book of Common Prayer 1662) services in August will be Holy Communion at 8am on 6th August and Evensong at 6pm on 13th August.

Last Sunday 23rd July we welcomed Bishop Rose, the Bishop of Dover to St Margaret's Bethersden for a combined service. The Bishop gave an inspiring sermon, and led a communion service before consecrating an extension to the churchyard, generously donated by a parishioner. We are blessed to have a wonderful churchyard here in Woodchurch, with a dedicated group of hard working volunteers who look after its upkeep. They have been a little short of volunteers recently - if you can help, please look out on Facebook for the date of their next gardening weekend, or please contact Philippa Jones philippaatwodchurch@btinternet.com Thanks very much to all our volunteers who help with jobs inside and around our church building.

I hope you all enjoy the rest of the Summer.

God Bless
Reverend Sue
[01233 820266. revsuerose@outlook.com](mailto:revsuerose@outlook.com)



The gardens at Boldshaves remain open this season until Sunday 8 October on Fridays, Saturdays, Sundays and public holidays from 2-6pm. Entrance charge £5, and free for children under 14. The Tea House is open whenever the gardens are open, serving teas, coffees, home-made cakes and light refreshments. www.boldshaves.co.uk

[Village Lost Property at The HUB](#)

If you find any lost property around the village please bring it to The HUB. We will hold it there waiting to be claimed for four months. If you have lost something around the Village please let The HUB know as it may have been handed in.

ALL SAINTS CHURCH WOODCHURCH



Saturday 19th August
2pm - 5pm

Delicious Strawberry Cream Teas

Meet Woodchurch Unicorn

Treasure Hunt

Outdoor Games

Live Music

(to include a guest singer, singing popular hits from the last few decades)

Homemade Crafts Stall

Drop in.... something for everyone

Let's keep those summer vibes into autumn!

By the time you are reading this you will hopefully have all enjoyed the Village Flower and Produce Show held in Woodchurch. (If you did I hope you popped by to say "Hello" - we love to meet everyone).

Villages have a history of holding annual fairs and fetes and they are a wonderful way of getting the community together. We soon forget who wins the prizes but remember the conversations we had discussing the merits of knobbly veg or stunning flower arrangements. At its simplest it is communication and joy in just being part of something that centres on our village, and we can all take part in. It might even spark memories of your childhood school or village competitions from the past.

However, village shows are not all about gazing nostalgically at the past, they perform a central place in all our futures - a future that we all need to engage in if our village is to retain its character for future generations.

Villages are special and you cannot keep taking from a village; you need to also give to the village too. Playing your part is about engaging and that is why we are asking you and your family to support our All Saints events. Coming up we have a Summer Fun Afternoon for children on 19th August held inside the church, the wonderful Porchswing Blues Band playing for us on 4th November, and finally finishing off the year with a fabulous Christmas Celebration event. Please support us as we work to retain the 'church' in 'Woodchurch.'

Woodchurch Local History Society



During the months of July and August our society takes a break from monthly meetings in the Memorial Hall. Our social event for the summer is a visit to Godinton House on Thursday August 3rd where we will tour the gardens and view the annual exhibition of contemporary sculpture. A cream tea will nicely complete the afternoon.

Our yearly programme, which started in February, has talks by experienced speakers on aspects of local and regional history..

On Monday 4th September our speaker for the evening is Jon Chaplin. Jon is one of our founder members and his talk will be about 'Romney Marsh on the Front Line'. This is actually a tribute to one of our previous members, Adrian Luff. The presentation will be in the Memorial Hall at 7:30pm.

Adrian had planned his presentation for March 2014 but unfortunately ill health prevented him from doing so.. Adrian has since passed away but Jon has undertaken to deliver it for him.

Adrian did his National Service at RAF Rye (situated at nearby Guldeford) from 1954-6 - the establishment was a Chain Home Radar Station during the WW2. Four tall radar masts and a receiving station

helped detect oncoming German aircraft - remains of the site can still be seen today. Adrian eventually gave lifetime service to the Ministry of Defence, being responsible for radar projects throughout the UK.



If you're interested in becoming a member of the Woodchurch Local History Society (WLHS) the fee from September to December is £6. If you wish to attend as a visitor for this talk an entrance fee of £3 will be paid at the door. No need to pre-book, just turn up at the door. All are welcome.

Thanks, Geoff [01233 860393](tel:01233 860393).

Are you interested in local history ?

If you are, Woodchurch Museum is looking to expand their curatorial team. You do not need to have prior experience as a museum curator - just an interest in helping to preserve our local history. You will be part of a team of volunteers helping to develop our new displays, interpret our extensive collection and looking after more than a thousand years of Woodchurch heritage.

If you are interested and would like to find out more, please contact Joyce, Gina or Charles through The HUB at [01233 861381](tel:01233 861381) or to enquiries@woodchurchheritagetrust.uk



The Six Bells Inn

The Bells are ringing the changes..... We have all said a fond farewell to Emily who is starting on a new exciting journey in her life. We will all miss her and hope she finds happiness in whatever she decides to do.



The "Six Bells" is a very special place and we will endeavour to do her proud with the introduction of some new members of staff and the return of some familiar faces. Exciting times lie ahead and with the Chef and his team producing some amazing food and the front of house team bringing some fresh ideas to make the Bells an even more inviting place to visit.

We have our quiz night Wednesday 2 August and we have a scheduled band "Tall Trees" to play Friday 25 August.

The Weald of Kent Steam Rally is on the weekend of 5th and 6th of August which always fills Woodchurch with the sights, sound and the amazing smells of the "old days". You hear the rumble of the Engines before you see them and to see them pull up outside of "the Bells" with the Wisteria as a stunning backdrop, the photo opportunities are second to none.

Woodchurch is such an amazing Village and we are honoured to work in such a beautiful place.

The future is sunny and hopefully the weather will follow.

With love as always

All of us at " The Bells"

Woodchurch Football

Friendlies have started and will continue throughout August with our first league game starting the first weekend of September



5th August - Woodchurch First team v Ticehurst

6th August - Woodchurch reserves v Egerton

12th August Woodchurch Reserves v Hawkurst Reserves

19th August Woodchurch Reserves v Skippers

26th August TBC



Woodchurch First Team and Sunday teams also have fixtures away throughout the month, check out our Facebook page for full fixture lists

WOODCHURCH WI OPEN MEETING - JULY 2023

It was delightful to see so many visitors at the WI meeting this month. The speaker, Stephen Harmer is not only Head-gardener at Tonbridge School, but also a professional author, guide and authority on all things to do with the history of gardens. His presentation was witty, beautifully illustrated and set out to show the principles of the "Arts and Crafts Movement in Gardens".

Using examples of country houses open to the public he introduced the important personalities of the Arts and Crafts movement, these included William Morris, of The Red House and Kelmscott Manor (the spiritual home of the Movement) and the Sackville West's home at Long Barn. Other influencers were Ruskin and Gertrude Jekyll. Stephen led us through the birth of garden design in the late 19th century. The "Mini Ice Age" of 1200 - 1870s had led to poor harvests, cheaper imports and seeing agricultural labourers laid off plus large rural properties sold. Hence the new middle class's smaller plots became the Arts and Crafts Gardens.

As garden design developed it absorbed the influence of Persian, Italian and French layouts and structural devices. The previous blandness of Capability Brown's formal garden was being replaced by more natural flowing design. Gardens were to be inspired by nature. As Jeffrey Jellicoe wrote: "The return to Nature as a retreat from Victorian sophistication was initiated by the middle classes and expressed itself in the search for the English rural scene".

So, using nature as inspiration, fluidity and movement became part of the planting. Vistas of the countryside were important. William Morris aligned himself with the Pre-Raphaelites and work of the medieval craftsmen. By founding the Art Workers Guild, Morris was encouraging simplicity and craftsmanship to play a role in garden architectural design. The main principles of an Arts and Crafts Movement garden can be described by words such as harmony, fluidity, unity, and plants which are possible to touch, feel and smell. Locations and items in the garden should include, strong hedging, local materials, old fashioned fruit and vegetables, gnarled fruit trees and a nuttery. Pergolas, loggias gazebos ("gaze abouts") and steps complete the image. Stephen suggests the Movement ended on a specific date. He firmly believes it was July 1st 1916, (the day of the Battle of the Somme) when so many agricultural labourers were killed. No longer was there staff for the upkeep of these high maintenance gardens.

This was a well received talk. Stephen's abundant knowledge, humour and enthusiasm for his topic were greatly appreciated. A splendid raffle (won by Josie) plus tea and biscuits rounded off the evening.

Members now look forward to their visit to Woodchurch Cottage Flowers on August 15th, Lunch Club at the Walnut Tree in Aldington on 23rd of August.

Craft Group meets 4th August

CRYSTAL CLEANING

**Fed Up With
Housework/Ironing?**



Crystal Cleaning is here to keep your home in good shape

Experienced cleaners,
Reasonable rates
for more information contact
Jo on 07909 228802

**Compter MOTs
in Woodchurch**



TLC for laptops,
phones & tablets.
Improve security &
extend the lifespan
of your device.

- Scan for viruses
- Improve speed
- Resolve WiFi problems
- Mac and PC
- Free home visits as standard

Contact Catherine
07305 894 584
jarvisclothier@gmail.com
www.jarvisclothier.co.uk

THE RARE BREEDS CENTRE PRESENTS SUMMER FUN



SIX WEEKS OF SUMMER FUN AT THE RARE BREEDS CENTRE!

We've got so much fun on the farm for you over the Summer Holidays. Each week will have a different theme, so you can visit again, and again, and again!

From Hawaii, to the Jurassic period, and everything in between, we've got a Summer packed full of fun for you - whatever the weather.

Each week sees a brand new theme and activities, designed to keep everyone (even the grumpies of teens) entertained, happy and active throughout the holidays.

What's On:

- o 31st JULY - 6TH AUGUST - **HAWAIIAN LUAU**
- o 7th AUGUST - 13th AUGUST - **ROARSOME DINOSAUR FUN**
- o 14th - 20th AUGUST - **PIRATE PARTY**
- o 21st - 27th AUGUST - **NUTS ABOUT NATURE**
- o 28th AUGUST - 3rd SEPTEMBER) - **FARMYARD FROLICS**

See website for more details on the activities, and to book tickets:

www.rarebreeds.org.uk/events/detail/6-weeks-of-summer-fun

WOODCHURCH GREAT GARAGE/YARD SALE

Saturday 19th August 2023 10am-3pm

Organised by Woodchurch HUB



A wonderful opportunity to put out a table- or a few.

Sell all those 'treasures' you've been sorting in the past few months.

All welcome - sellers and buyers.

Tour the village streets on this day.

No cost to anyone- the profits are yours!

If you live in a no through road eg Kirkwood Ave, Rectory Close, Brattle—make sure that there is a sign at the entrance to your road.

enquiries@woodchurchhub.uk or [pop a note in The HUB letterbox](#)



Citizens Advice Bureau

AND

Social Prescribers

Coming to Woodchurch HUB



From July the Ashford Citizens Advice and the NHS Social Prescribers will be holding regular consultation clinics at Woodchurch HUB.

Social Prescribers - 1st Thursday of each month 1pm-4pm

Citizens Advice - 2nd and 4th Thursday of each month 1pm-4pm

For more information about how to access either of these services please contact The HUB.



Support your local museum- you could win a £50/£30/£20 prize every month.

Draw numbers for 2022/23 are still available For more information please contact Joyce via The HUB - enquiries@woodchurchhub.uk or 01233 861381

July 2023 Draw Results

1st prize	£50	Kim Staff	407
2nd prize	£30	Val Brown	507
3rd prize	£20	Roy Sharp	555



SATURDAY 2ND SEPTEMBER

Woodchurch Scout and Guide community centre presents

DOGFEST FUN DAY!

2PM



CELEBRATING BEING A PART OF WOODCHURCH FOR 20 YEARS WITH OUR ANNUAL DOGFEST AND MORE!

SPONSORED BY



PREPARE FOR ROUNDS SUCH AS....

Waggiest tail
Best fancy dress
Prettiest bitch
Most handsome dog
Best trick
Musical Sits

£1

ENTRY FOR EACH ROUND

Face Painting
Games
Local businesses
Ice cream
BBQ

<-- For more info



CRAFT FAIR

The Jean Mealham Centre,
Lower Road, Woodchurch TN26 3SQ

Saturday 19th August

10am-4pm

Lots of Stalls,
Something for Everyone

Tombola

Refreshments



FREE
Entry and Parking



WOODCHURCH IN BLOOM
INCORPORATING
WOODCHURCH GARDENING SOCIETY



A very big thank you to all those who were involved & supported the revival of Woodchurch Flower & Produce Show

All the entries were fantastic
a huge well done to you all

WHEELS of TIME

Pick up a booklet, from the HUB or Woodchurch Village Life Museum*, that shows Kent's fantastic museums and heritage sites. Join Roamin' Rex in collecting badges, available to child visitors aged between 5 and 11years, as you visit over 50 offered places, many with free admission.



*Start next weekend by visiting our very own unique WVLM, situated a few minutes walk from The Green, just past the church on Susan's Hill. Open until the end of October at weekends and bank holidays or at other times by contacting enquiries@woodchurchheritagetrust.uk

COMPLIMENTS

Yes, we all like to receive those and as a village we have many - through our multiple organisations, about The Green, all the clubs and societies that are available to join, The Hub, all of the village activities and events that take place..

But... (and there's always one of those)... who are the people making all this happen? The answer is that it is mainly volunteers from Woodchurch and from other local villages.

Could you help us 'swell the ranks' with a few hours - monthly, weekly, or even just occasionally? There will be something you can do.

Contact enquiries@woodchurchhub.uk, phone 01233 861381 or pop into The Hub in The village car park.

**VOLUNTEERING
MATTERS**

**THERE'S SO MUCH MORE
in your local country store...**



Of course we sell tractors and chainsaws and lawnmowers and safetywear and garden machinery and a all sorts of agricultural equipment...

But did you know you can also buy clothing, footwear, and gifts of all kinds



Hendon Barn, Woodchurch, Ashford, Kent
TN26 3QP Tel: 01233 224860

ernestdoeshop.com



SHISEIKAI Karate dojo in Woodchurch



SHISEIKAI
WOODCHURCH SHOTO-RYU KARATE-DO
全英国松涛流空手道志誠会ウッドチャーチ道場

If you have ever been interested in martial arts please come along to the Jean Mealham Centre on:

Tuesdays 7pm—9pm

Thursdays 7pm—9pm

Sundays 10am—noon

For more information contact Mark Carley on 01233 861395

Everything **Outside**

Bringing New Life
To Your Garden

For A Quick Quote From A Company You Can Trust Call

☎ 01580 766 232 ☑ 07795 465 861

Welcome To Everything Outside

We cover a wide range of services to meet the requirements of our ever-growing client list, if you are looking for a company you can trust to provide a high standard of quality work covering

- ✓ Gardening
- ✓ Garden Design
- ✓ Fencing
- ✓ Clearance
- ✓ Landscaping
- ✓ Hedge Cutting
- ✓ Tree Surgery
- ✓ Digger Work

and much more. Then call our experienced team today on 07795 465 861. To view our full range of services, click on the link below.

Our head office is based in Tenterden, Kent and means we are in the perfect location to proudly service Kent and East Sussex. All our services are tailored to each job we carry out and our team are experience in all aspects of fencing and landscaping services making us your number one choice for all work you require.

Great Work

Great Reputation

Great Price



Design, planning & build services

Now offering full 3d design development for your extension, new build or conversion project. Please call us for an introduction to our design services at our Woodchurch office.

01233 861177 vernacularhomes.com



Mark Hogben Woodchurch

A highly experienced cleaner seeking to build on existing experience. Works consistently to high standards with a can-do attitude. Seeking opportunities to utilise and build on existing skills.

- Full driving licence with 7.5t entitlement
- Excellent at team work and able to work unsupervised
- Flexible approach to work

Tel: 07552 513270 email: markhogben1@hotmail.com

OUR SPONSORS

fab feet
Professional Foot Healthcare

www.fabfeethealthcare.co.uk

Delivering high quality Podiatric care in the
comfort of your own home

Providing a reliable and friendly service of professional
treatments for all of your foot ailments:



Call Michelle on:

Tel: 01233 731207

Registered & Insured



muscle whisperer

Remedial massage therapy.

Your Local Woodchurch Massage Therapist

- Remedial Massage
- Sports Massage
- Holistic Massage

- Ultrasound Therapy
- Electrotherapy

- Injury Treatments & Rehabilitation
- Rehabilitation Taping/Strapping
- Athletic Taping/Strapping



Bookings - 07799221043

www.musclewhisperer.org.uk

Treatment Room - Little Vale TN26 3QW



musclewhisperer@outlook.com



Dolmen Conservation & Joinery Ltd

Seasoned Logs, ready to burn

**Sustainably sourced logs
delivered to your door**

Call Jack on **07804 881461**

for prices and delivery - or visit
The Woodland Centre,
Warehorne Road, Woodchurch
(next to the Rare Breeds Centre)



B.T.C

Ben Taylor Carpentry & Construction

07585509817

All aspects of carpentry and construction

- extensions
- porches
- bespoke fitted furniture
- patios
- fencing and landscaping and much more



B.T.C



b_t_c_construction



07585509817

KENT HOLIDAY COTTAGES

+44 (0) 1233 860 293

info@kentholidaycottages.co.uk



WOODCHURCH

SHOP BAR WINE TASTING TOURS

Thursdays to Sundays 11am - 5pm

http://woodchurchwine.co.uk tel:01233 860276

Woodchurch Cottage Flowers



We are an artisan florist and flower grower. We grow and sell the most amazing seasonal English flowers. All grown here at our smallholding in Woodchurch in Kent. We are a small flower farm working with nature and the seasons.



Call or text 07969 449235

www.woodchurchcottageflowers.co.uk

D K Plastering Services

All plastering work carried out



Fully Insured Professional Workmanship

For a clean & tidy job call David

Mobile

07974 891795

Or Email

dk.plastering@hotmail.co.uk

You could advertise your company here from as little as £10 per month

WOODCHURCH COMMUNITY NEWS



The Woodchurch Community News is distributed **free of charge** to over 1,000 houses each month in Woodchurch and surrounding areas. If you would like to become an advertising sponsor then please visit The Woodchurch HUB Web site - **The HUB > Newsletter Advertising**

If you would just like to help us with the costs of production please go to **The HUB web site** and click the **"Donate"** button.

ETHAN JOHNSON

CARPENTRY, JOINERY AND RESTORATION

Free Estimates

07484 173957

ethanjohnson303@gmail.com

Experienced in bespoke made to measure projects and working to preserve original features of older buildings. We Undertake wide variety of projects.



2024

**Your carnival needs you.
Tell us what you would like.**



Following the success of last year's carnival, the carnival committee would value your opinion as to whether we organize another carnival next year.

If you would like to be involved in any way, beforehand, on the day or afterwards we would welcome you on board.

You can contact us via the [carnival page on the Hub website](#) or by calling the hub on **01233 861381** (if no-one is there to answer your call, please leave a message and someone will get back to you) - 2024 could be a great year.

The June 2022 Woodchurch Carnival was the first one held since 1996 and was a tremendous success both financially but perhaps more importantly in bringing the Woodchurch community together by making it accessible to all and providing some welcome joy after almost three years of Covid isolation. With the help of several grants and donations, advertising income and stallholder fees totalling approximately £16k and with total costs of approximately £15k, with the tireless help of many Woodchurch residents and organisations we were able to create a Carnival full of attractions, stalls, live music, and a choice of refreshments. Whilst providing many complimentary attraction tickets to vulnerable families within the village, the Carnival takings totalled almost £11k. This enabled the Carnival Committee to make awards to eight Woodchurch community organisations, totalling almost £4k and still leave a healthy bank balance for the proposed 2024 Carnival.

For the 2024 Carnival, our aims are again to build upon the community spirit for every age group within the village and to promote the involvement of all ages and be accessible to all. A tremendous amount of time and effort goes into organising this event and while we do have a nucleus of wonderful volunteers, we will always need more, particularly the younger generation. We would welcome any new new ideas for events and attractions and ways that you believe we can improve upon. It is your Carnival, not just ours, so please help us deliver an event to be enjoyed for that day but also to leave a legacy year on year for all to benefit.

Jemima and Hannah are looking after retail and sponsorship for the carnival 2024 and following the fantastic success in 2022, they are looking at involving some of the great retailers and sponsors from then, as well as encouraging local new ones. For 2024 they are looking to create a bit of a shopping village feel that will champion local businesses, clubs/societies and crafts. Also being considered is a Children's Zone providing messy play, workshops and a mini sensory shop. Alongside this we would have crafts, face painting, glitter tattoos and hair braiding and lovely local ice cream.

What food and drink concessions do you think are needed on the day? Burgers? Fish&Chips? Sandwiches? Hog Roast? Donuts? There would (of course) be a bar or two and plenty of tea, coffee and cakes.

What side-shows and rides should be included for 2024 - and are you able to help create and run a side show on the day?

As the preparations for Carnival 2024 are still in the early stages this is your chance to share your ideas, give us constructive feedback from Carnival 2022 and, if you can spare a little time, become a Carnival 2024 volunteer

See a short video here of Carnival 22 <https://funderfilms.com/2022/08/16/queens-jubilee-woodchurch-carnival/>

Simple Kent Funerals

Relaxed, flexible, imaginative, economical, caring

Applefield Cottage, Redbrook Street, Woodchurch TN26 3QS

Call Toby on 07806 613297 • www.simplekentfunerals.co.uk

We work in an eco-friendly and environmentally-sustainable way and are certified as a net carbon neutral business