



WOODCHURCH COMMUNITY NEWS

The village community working together

May 2023

Contact us: Telephone 01233 861381 Email enquiries@woodchurchhub.uk Web www.woodchurchhub.uk

*** MAY 2023 - LOCAL ELECTIONS SPECIAL ***

WOODCHURCH Community Calendar



Weekly events:

Saturdays:

Boot Camp 9:00am-10:00am on the Village Green

Sundays:

Outpost Church 10:00am-12:00pm in the S&G Community Centre, Lower Road

Mondays:

Pilates 9:00am-10:00am in the Memorial Hall
Tai Chi and Qigong 9:45am and 10:45am at the S&G Community Centre

Knit and Natter 2:00pm - 3:30pm in the Pop-In Centre Lodge

Line Dancing 2:30pm - 4:30pm in the Pop-In Centre

Junior Tennis Coaching 3:30pm-7:30pm on the Tennis Courts

Beavers 6:00pm-7:00pm in the S&G Community Centre, Lower Road

BodyTone 6:15pm-7:00pm at the Memorial Hall

BodyFlex 7:15pm-8:00pm at the Memorial Hall

Scouts 7:30pm-9:00pm in the S&G Community Centre, Lower Road

Tuesdays:

Pilates 9:00am-10:00am, 10:15am-11:15am and 6:00pm-7:00pm in the Memorial Hall

Yoga 10:00am-11:15am in the Pop In Studio

Coffee Morning 10:00am-12:00pm in All Saints Church

Little Leaves Forest School 10:00am - 12:00pm under 5's Play Group based in Woodchurch

Community Warden 1:00pm-3:00pm in the HUB

Puzzle Club 2:00pm-4:00pm in the Pop In Lodge

Blend Youth Cafe 3:00pm-5:00pm in All Saints Church

Cubs 5:30pm-7:00pm in the S&G Community Centre, Lower Road

Wednesdays:

Pilates 9:00am-10:00am in the Memorial Hall

Museum Volunteers 9:30am-12:00pm at the Museum

Yoga 10:00am-11:15am in the Pop In Studio

Over 60s Pop-In 2:00pm-4:00pm Tea and coffee and boot fair marquee at the Jean Mealham Pop-In

Rainbows 5:00pm-6:00pm in the S&G Community Centre, Lower Road

Fish and Chips 4:30pm-7:30pm in the Village Car Park

Brownies and Guides 6:00pm-7:15pm in the S&G Community Centre, Lower Road

Morris Dancing Practice 8:00pm-9:30pm in the S&G Community Centre, Lower Road

Thursdays:

Art Society 10:00am-1:00pm at the Memorial Hall

Margaret Morris Movement 2:15pm-3:15pm in the S&G Community Centre, Lower Road

BodyBlast 6:30pm-7:20pm at the Memorial Hall Annexe

Badminton 7:00pm-11:00pm at the Memorial Hall

Previous editions of the Newsletter can be found on The HUB Web site
www.woodchurchhub.UK



Thursdays (cont):

Explorers 7:30pm-9:30pm in the S&G Community Centre

Fridays:

Soup Fridays 12:00am-2:00pm in the Jean Mealham Centre

Adult Tennis Coaching 5:30pm-6:30pm on the Tennis Courts

Other Events:

Mon 1st Boldshaves Gardens opens
Nightingale Walks - 6:00pm at Boldshaves Gardens (until 2nd May)

WLHS - Social History of Ecclesbourne Glen and Fairlight. 7:30pm in the Memorial Hall

Wed 3rd **Quiz Night at the Six Bells** - 7:30pm

Thu 4th **Local Elections** - 7:00am-10:00pm in the Memorial Hall Annexe

Sat 6th **The Kings Coronation** - 11am at Westminster Abbey

Hog Roast and BBQ at The Six Bells Pub

Music at The Six Bells - Bromley Vs Pilcher - 7:00pm

Lighting of the village beacon - 9:15pm on the Village Green

Sun 7th **BCP Eucharist** - 8:00am at All Saints Church

Mon 8th **The Big Help Out** - 10:00am-Noon at All Saints Church

CARM 10:30am to 12:30pm in the Memorial Hall

Tea Party to Celebrate the King's Coronation - 2:00pm-4:00pm at the Jean Mealham Centre, Lower Road

Tue 9th **WI Resolutions and "a Party Piece"** 7:15pm at the Memorial Hall

Wed 10th **Borough Councillors Surgery** - 11:00am-Noon at The HUB
Services to Woodchurch Village awards - 4:00pm at the Jean Mealham Centre

Museum AGM - 7:00pm in the Memorial Hall

Sat 13th and Sunday 14th **WYT Churchyard tidy up weekend** at All Saints Church

WI Quiz Night - open to everyone - 7:00pm at the Memorial Hall

Sun 14th **Holy Communion** - 11:00am at All Saints Church

Tue 16th **Woodchurch Players auditions** (Children) - 6:30pm at the Memorial Hall

Wed 17th **Woodchurch Players auditions** (Adults) - 8:00pm at the Memorial Hall

Thu 18th **Parish Council Meeting** - 7:00pm in the Memorial Hall Annexe

Sat 20th **Craft Fair** - 10:00am-4:00pm at The Jean Mealham Centre

Sun 21st **Morning Worship** - 11:00am at All Saints Church

Evensong - 6:00pm at All Saints Church

Mon 22nd **PPG Meeting** - 6:00pm in the Memorial Hall Annexe

Fri 26th **Art Society Exhibition 2023** - 7:00pm-9:00pm in the Memorial Hall Annexe

Sat 27th and Sun 28th **Art Society Exhibition 2023** - 10:30am- 4:30pm in the Memorial Hall Annexe

The Full Community Calendar can be found at
www.woodchurchhub.uk/community-calendar

As we are approaching the local election on May 4th your Parish Council would like to thank the residents of Woodchurch for your continued support over the past four years. These four years have been quite turbulent, with the effects of Covid putting restrictions on everyone's freedoms and ability to work



(including the Parish Council) and also placing financial pressures on many households within the Village. This was later followed by the more recent cost of living challenges, which we are still experiencing. Whilst limiting some of the functions that the Parish Council could undertake, the council continued to support Woodchurch Village residents throughout this time.

Woodchurch Parish Council has only two paid employees - The Clerk/Responsible Finance Officer and the village litter collector/Greenkeeper. Although the elected Councillors have the privilege of serving the village community, **they all do so on an entirely voluntary basis** and receive no salary or benefits in kind. Whilst each of the councillors usually have specific responsibilities within the council, they also do a lot more behind the scenes that largely goes unnoticed. They are consultees on village planning applications and represent the village on planning appeals. They are consultees on local Public Rights of Way (footpaths), work closely with village societies, Ashford Borough Council, Kent County Council, the Police and Community Warden, also the school and the church. Over the past four years, to help minimise costs during financially challenging times, much of the maintenance work around the village (including maintenance and repairs to the public toilet, Pavilion, Play Area fencing, notice boards etc.) has also been carried out by councillor volunteers.

In addition to the Clerk/RFO, the Parish consists of up to nine elected councillors, one of whom is elected each year to be the Chair. In most council terms there are councillors who leave as personal circumstances change and others who are elected or co-opted, in their place. During this past four year term there have been several changes in both key positions within the Council and the Parish Council would like to thank all who have given their time during this period.

Chair: The term began in May 2019 with Julian West as Chair. Julian stood down from the council in September 2020 to be followed as Chair by Alan Baker. Alan served on the council until March 2021 when the position was taken over by Lucy Bramley. Lucy served as Chair until August 2022 when she left the council and was followed by Alastair Hukins (the then longest current member of the Parish Council). Alastair stepped down from the council in December 2022 to be followed by the current Chair, Lucy Quinn.

Parish Clerk: Judith Batt began the current term as Clerk/RFO until she retired in June 2022. Whilst the council was in the extended process of recruiting her replacement, interim (locum) clerks were appointed. Robert Woods (who was then the Parish Clerk to South Willesborough and Newtown) took on the locum clerk role at the end of July 2022, but he then stood down in early August. Robert was followed as locum clerk by Aniko Szocs (who was/is also Clerk for the Parish of Great Chart and Singleton) until December 2022 - when she was appointed as the permanent Clerk/RFO to Woodchurch Parish Council.

As we approach the May elections the Parish Council is comprised of the following members

Councillor	Main Roles	May 2023 Candidate
Paul Glasgow	Finance and Policy	✗
Richard Luker	Councillor and Football Club Liaison	✓
Nicola Job	Transparency, Data Protection, Disciplinary and Grievance	✓
Richard Job	Youth Matters and Police Liaison	✓
Ciaran Molloy	Planning and Public Rights of Way	✓
Wade Nash	Vice Chair, Transparency, Data Protection, Web and communication	✓
Lucy Quinn	Council Chair	✓

Following the recent election awareness campaign run by the Parish Council, six other village residents are also standing as candidates in the May election.

Candidate	
Richard George	Village Handyman - "Random Tasks"
Gina McKay	Six Bells Park resident and Museum co-chair
Neil McKay	Six Bells Park Resident and Mens Sheds
Catherine Sales	Co-owner of "The Old Post Office Coffee Shop"
Julian West	Woodchurch Scouts
Robert Woods	Kirkwood Avenue resident

During this latest four-year term the Parish Council has continued representing the local community, delivering services to meet local needs and striving to improve quality of life in the parish. In addition, as funds have permitted, it has also undertaken a number of specific projects which include:

The Community Transport Scheme ("Woodchurch Wagon"). This was a pilot scheme by Ashford Borough Council to provide local access to a low-cost community minibus service. Woodchurch Parish Council was one of the early adopters of this scheme and worked closely with The HUB to provide this service for the community. Unfortunately, with the onset of the Covid pandemic, ABC were forced to withdraw funding for the scheme and all of the pilots were ceased. It is unsure when/if ABC will resume this scheme.

In July **2019** the Parish Council completed the transfer of the additional land to increase the size of the Village Green. This is the area known as the Village Green Extension or Wildflower Meadow. The Council continues to work with local residents and societies to develop and manage this area.

In **2020** the council took over the responsibility for the maintenance of the Pavilion on the Village Green from the disbanded Cricket Club. Although the pandemic subsequently halted any work on the Pavilion building, it was identified that significant expense would be required to bring it up to the current standards that are required for accessibility and equality of access. The future of the Pavilion and the Play area are expected to be included as part of a large village-wide consultation at the beginning of the new council term.

In order to improve the local identity of the Parish Council, and make it more accessible within the village, the Parish Council office was moved from Shadoxhurst to share The HUB building in the Woodchurch village car park.

In **2021** the Parish Council replaced the bus shelter outside Shirkoak Park and also purchased the lights and stand for the annual Christmas tree on the Village Green.

In **2022** the council worked closely with The HUB to fund 3 additional publicly available defibrillators throughout the village (making a total of 4). It was also a major sponsor of Woodchurch Carnival 22 (through the Woodchurch Windmill Charity). To support both the Carnival and the Queens Jubilee celebrations the council also erected the beacon on the Village Green.

Whilst it would be ideal for the council to be able to represent the views of **all** of the community **all** of the time, this is sometimes not possible and difficult balances often have to be found between the views of local interest groups and the village as a whole. This makes it important to ensure that we have as diverse a range of councillors as possible serving on the Parish Council. In this way the council will be in the best position to assess and represent the widest range of village needs.

One of the difficult decisions that had to be made this year was regarding expenditure and the annual Parish Council budget. Due to the financial challenges that village residents were facing during and following the Pandemic, for the 2021/22 and 2022/23 budget years the Parish Council took the decision to not increase its budget - and therefore freeze the village precept. In order to achieve this all council spending was minimised, all but essential repairs were deferred, and any additional expenditure was drawn from the councils emergency reserves. For 2023/24, with the increased cost of services, salaries, the costs required to ensure that the council is compliant with its legal obligations, and also for it to undertake deferred improvements and maintenance within the village, the difficult decision was taken to increase the precept. Even with this increase there are some expenses which remain unknown (for instance future repairs to the village pump) that may still need to be drawn from reserves.

Since Aniko has taken on the full time position as Parish Clerk and RFO, the council communication with the village has been steadily improving. The Council is currently in the process of updating its Web presence and it now also has its own dedicated Facebook page. This levels of communication will continue to develop rapidly following the May elections and will help make the Parish Council even more accessible to all village residents.

The Parish Council thanks you for your continuing support and is looking forward to supporting you throughout the next four year term - 2023-2027.

How to contact your Parish Council

In person: By talking to one of your councillors - details on the Parish Council Web site

By email: clerk@woodchurch-pc.gov.uk

By phone: 01233 861381

Through The HUB: Place your correspondence in a sealed envelope marked "Parish Council" and deliver to The HUB

By post to: Woodchurch Parish Clerk, c/o Woodchurch HUB, Front Road, Woodchurch, Kent, TN26 2PA

Through the contact form on the Parish Council Web site: www.woodchurchhub.uk/parish-council/

Upcoming roadworks in and around Woodchurch

Information from KCC and one.network

Roadworks - Lower Road

2nd - 10th May 2023

Closure in force: Traffic control (two-way signals)

Description: KCC Drainage repair works

Road Closed - Appledore Road, Bench Hill and Woodchurch Road

2nd - 5th May 2023

Closure in force: Road Closed

Description: Openreach - New service connections

Road Closed - Swain Road

3rd - 4th May 2023

Closure in force: Road Closed

Description: BT Telegraph pole works

Road Closed - Redbrook Street - near Robin Cottage

23rd - 25th May 2023

Closure in force: Road Closed

Description: South East Water



How to report highway problems including potholes, streetlights and broken signs

www.kent.gov.uk/highways

Parish Council meetings

The next Parish Council meeting will be held on **Thursday 18th May at 7:00pm in the Memorial Hall Annexe**

WOODCHURCH SURGERY UPDATE

We have had a pretty busy April with the long Bank Holiday at Easter and lots of staff holidays. Our trainee, Mukundh, has been off preparing for his exams so we all wish him well. We have been busy doing Covid Boosters for the care homes and for the housebound - if you are housebound and haven't been jabbed please let us know.

May is a month for Stroke Awareness. When I was training a stroke was "a neurological deficit lasting more than 24 hours" and a TIA (transient ischaemic attack) was "a neurological deficit lasting less than 24 hours. This is a bit old-hat now as we don't just sit and wait to see if the deficit is going to last a minute more than 24 hours just to get the diagnosis right!

These days we should really just consider a stroke as an interruption to the blood supply of the brain causing damage. It could be temporary lasting just minutes to hours, or could be permanent. Really a TIA, or mini-stroke, is a temporary interruption to the blood supply and can be a warning sign to the main event. We are drilled with the public message to suspect a stroke by "FAST" - is the Face drooped on one side, is there Arm weakness, is the Speech slurred and to act in Time to call 999. Visual disturbance is also an important sign that shouldn't be ignored.



On arrival at the hospital the team will scan to see if there is a bleed on the brain (haemorrhagic stroke) or a clot (ischaemic stroke). If there is no bleed and your symptoms have been present for less than 4 hours then clot-busting medication is given which tries to restore circulation to the brain and reduce the potential for long-term damage. This window of opportunity really does make a difference so time is crucial. Amazingly when I was training the only treatment was bed rest and aspirin. The focus then was on trying to help the recovery afterwards.

90% of strokes are due to blood clots and there are risk factors for them. These include high blood pressure, smoking, family history and irregular heart beats (atrial fibrillation). These risk factors can largely be moderated so it is essential to check your blood pressure now and then and aim to keep it below 135/85 at home. It is also helpful to check your pulse now and then to see if it is regular - it can be easily felt at the wrist and lots of watches can now detect irregular heart rhythms. If you think you may have an irregular pulse please come and see us so we can investigate further. If you really do have atrial fibrillation we can reduce your risk of stroke by giving medication to

"thin" the blood and prevent harmful clots forming. This used to be the old rat-poison (warfarin) but now we tend to use more modern drugs known as "doacs" (not known to be harmful to rats).



I think lots of people worry about having a stroke because of a fear of long term disability but we can now see the benefits of early treatment and earlier diagnosis of high blood pressure and atrial fibrillation. Please feel free to ask us to check your blood pressure and pulse even if you are seeing us for a minor unrelated problem. It might just prevent your life changing.

We are all looking forward to the Coronation weekend and the various Bank Holidays in May. We are open for business as usual except the Bank Holidays.

Best wishes to the whole community on behalf of Woodchurch Surgery, Jack Hickey, GP



Surgery Opening Hours

Monday to Friday 9am to 5pm



Where to find us...

Hamstreet Dental Clinic
Warehorne Road
Hamstreet
Kent TN26 2JJ



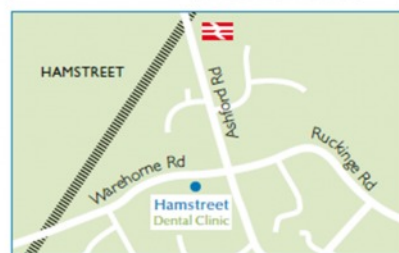
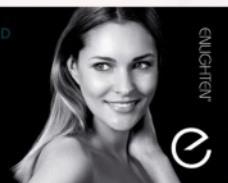
Find us on facebook



Hamstreet
Dental Clinic

Welcomes You

ENLIGHTEN ACCREDITED
PROFESSIONAL TEETH
WHITENING CENTRE



Tel: 01233 733848

Email: hamstreetdentalclinic@gmail.com

All Saints Church



Dear Friends,

Last weekend we were treated to an excellent performance of the Ashford Youth Jazz Orchestra - our most recent fundraising concert in All Saints Church. Watching the young people perform a hugely varied programme of music was wonderful - what a talented group of young musicians! The evening raised £1,500 towards church funds, so thanks very much to everyone who attended, and to those who worked so hard to organise the evening. The funds will be put towards the refurbishment of our toilet in church. If you have visited recently, you will know that it is in dire need of redecoration, and it does not meet current standards for disabled facilities. We are also working on a plan to make our entrance more accessible for wheelchair and pushchair users.



If you would like to know more about our church finances and what we are planning next for our wonderful building, then please come along to our Gift Day/Open Day in the church on Saturday 13th May from 10am-1pm. You will find a leaflet with the newsletter which explains how much we raised last year, and how we spent it. We would be happy to answer any questions you might have, and any suggestions for either fundraising or improvements to the church - we can explain our current plans. We do not receive any national church or government funding, so we would be grateful for any help - any amount is welcome, whether monthly or a one-off donation.

You can use this link to donate

<https://www.parishgiving.org.uk/donors/find-your-parish/woodchurch-all-saints-ashford/>

or please visit with your cash or cheque donations.

We are taking part in "The Big Help" day on May 8th to promote volunteering, and we are always pleased to receive offers of help for our coffee mornings, fundraising and care of our building and churchyard. Our church services are most Sundays at 11am - you can find details here:

<https://www.bhhw.org.uk/new-services/>

Thank-you for supporting your church in Woodchurch.

God Bless

Reverend Sue

01233 820266. revsuerose@outlook.com

Six Bells Park

Easter Monday saw some of Six Bells Park residents congregate at the Six Bells pub for the Easter bonnet competition and buffet. The theme for the bonnet was 'nursery rhymes'. Angie won first prize for the ladies with her 'Mary, Mary quite contrary. June came second with her 'Humpty Dumpty'. Mike won first prize for the men with his 'Humpty Dumpty' whilst Gordon came second with his 'Old MacDonald'. Thank you to everyone who took part and a special 'Thank You' must go to Roger who dressed as a giant Easter bunny!

The Crown and the Cross

Throughout history the church and the crown have been interlinked. They have much in common - on the surface ceremony and pageantry, and at the heart, solemn oaths and lifelong commitment. In our own churches we have services to celebrate the Coronation of King Charles III, so if (like me) you were not invited to the main event come along and take part in one of our own celebratory services.

In the same way that King Charles makes his promise of service to the people, the All Saints' promise to our village stretches beyond the main Coronation weekend. For the King that may mean a lifetime of charity work; for our village we promise regular opportunities for worship, reflection, family celebrations, coffee mornings and support when you need it, whether that be through our foodbank, practical assistance, or emotional support. Of course we want to keep our own commitments going way into the future. Times remain challenging for so many people, but we cannot do this alone - so thank you to everyone who came to support our Ashford Youth Jazz Band last month. We know from your feedback that you had a wonderful evening.

The Coronation offers us an opportunity to all come together as one nation. We as a community can also come together as one village - so please continue to support us. We have a Gift Day on May 13th and some great events planned for the rest of the year. In supporting us you help your community. Your help today can help someone else tomorrow, and that's something to truly celebrate.

All Saints Fundraising Group

SATURDAY 29TH APRIL

9 AM TO 12 NOON

PLANT SALE

**BOLDHAVES OAST,
WOODCHURCH, TN26 3RA**

What3words are: answers.public.shadowing



**MIXTURE OF INTERESTING
ANNUALS FOR THE CUTTING
GARDEN**

£ 1.50 EACH

TEA AND BISCUITS AVAILABLE

FOR INFO CONTACT TRACY: 07796 393316

Boldshaves Garden. The garden is now open on Fridays, Saturdays, Sundays and public holidays from 2-6pm until 8th October. Entrance £5. The Tea House is also open whenever the garden is open.

Nightingale walks begin on 1 May and are held every evening until 21 May. There is no need to pre-book. Just collect in front of the main house for a 6pm start each evening. Cost £5 per person (cash only).

Tickets are now available for the annual Wealden Festival, to be held here on 24/25 June. For full information see the Festival website at www.wealdenliteraryfestival.co.uk.

We look forward to welcoming you to Boldshaves for one or more of these events.'

www.boldshaves.co.uk



'Connecting Woodchurch'



The Big Help Out

Bank Holiday Monday 8th May

'Thousands of organisations – big and small – are getting together to mark The King's Coronation by giving everybody the chance to try volunteering for themselves and make a difference in their community.'

Quote from the website [The Big Help Out](http://TheBigHelpOut)

Please come along to find out:

- Volunteering opportunities in our Village
- How to get involved in our community
- Details of what our many groups/clubs have to offer
- Benefits you'll enjoy

Monday 8th May

All Saints Church 10am–12 noon



CRAFT FAIR

**The Jean Mealham Centre,
Lower Road, Woodchurch TN26 3SQ**

**Saturday 20th May
10am-4pm**

**Lots of Stalls,
Something for Everyone**

Tombola

Refreshments



**FREE
Entry and Parking**



We have 30 stalls currently booked and have spaces for others outdoors, £5 a pitch (approximately 3m x 3m). If you would like a stall email me at juneandsuz@yahoo.co.uk

Mens Sheds

Mens Sheds is slowly making progress in setting up in Woodchurch. We now have a confirmed site and we are looking at the next stages.

We have had a slight setback as our chairman has had to step down due to family issues. If there are people who would like to step in and help can you contact me at neilmckay0730@gmail.com



Woodchurch FC's season finishes on May 13th with home games on both 6th and 13th May 2pm KO

We'd like to thank everyone for their continued support to both of our Saturday men's teams and our 2 walking football teams. Next season we'll have a Sunday team and both walking football teams will be playing in the Kent league meaning all 5 teams will be properly affiliated and paying recognised competitions. It's the largest the club has been in its 100 year history, and we are also an England Accredited club with FA trained coaches throughout. A special mention to the Six Bells pub for everything they do for us throughout the year



CALL NOW IN CONFIDENCE IMMEDIATE HELP & ADVICE 24/7
0800 088 66 86
International: +44 330 333 6197

**Creating Inclusive &
Diverse Addiction
Treatment for all**
Supplying you with the
right addiction treatment
options

Talk to us today

Confidential and Immediate help

**St Mary Magdalene,
Ruckinge**

FLOWER FESTIVAL

'Threes and Thirds'



**Saturday 13th May 10am-4pm
Sunday 14th May 11am-4pm**

Refreshments

Free admission

Hamstreet Road, Ruckinge TN26 2NU

NOTICE OF ELECTION

Election of Parish and Town Councillors

Local government elections
Thursday 4 May 2023

Your guide to the candidates in the Woodchurch local elections on May 4th



On May 4th the local elections will be taking place in the Woodchurch Memorial Hall Annexe and you can vote at any time between 7am and 10pm. Please do not forget to bring with you both your polling cards and your photo ID. You will still be able to vote if you have lost your polling card, however you will not be able to vote without your valid photo ID.

In Woodchurch you will be casting your votes in two separate elections:

(1) **The Ashford Borough Council Elections.** On this ballot paper you will be voting for two borough councillors to represent the Weald South Ward, which includes the parish of Woodchurch. There are 7 registered candidates for the 2 councillor positions and so you will be asked to vote for 2 of the candidates.

(2) **The Woodchurch Parish Council Elections.** On this ballot paper you will be voting for 9 councillors to represent you on Woodchurch Parish Council. There are 12 registered candidates for the 9 councillor positions and so you will be asked to vote for up to 9 candidates.



Follow the instructions on the notices in the polling booth and on the top of the ballot paper to vote. On both ballot papers you will be allowed to check (tick) up to the maximum number of available council positions in that election. Please do not tick more than the maximum or your ballot paper will be deemed to be spoiled and your vote will not be counted.

More information about voting in the local elections can be found at:

www.ashford.gov.uk/your-council/register-to-vote-and-elections/local-elections-may-2023

www.gov.uk/how-to-vote/voting-in-person

Candidates standing in the 2023 Woodchurch Parish Council elections (in alphabetical order)

Richard George (Appledore Road)

I've lived and worked in the parish of Woodchurch for over 65 years, working on the family farm till 1999 when I started up my general handyman business working around the village and surrounding areas, I've am a member of Tenterden golf club and captain in 2017, the village is and always has been very important to me.

Nicola Job (Front Road)

My name is Nicola Job and I have been a parish councillor since November 2020, I moved to the village nearly 10years ago with my family, I work in healthcare as a Director of Operations where I ensure the efficient running of a Hospital, I am responsible for financial accountability and the safe and effective running of the hospital for all staff and patients.

I joined the parish council to ensure inclusion for all members of the parish demographics to be heard and I have been keen to work with my colleagues to ensure transparency and effective communication with all the villagers.

I have been working closely on the growth of the parish council's effective communication and recruitment strategy to build a strong foundation of people on the council that all want to work on the vision of improvement within the village through listening, acting and delivering.

If re-elected to the council I would like to continue to deliver my initial vision, which unfortunately due to the recent changes in personnel within the council resulting from the Covid 19 pandemic and also other external forces, this has been limited. My vision is to ensure that all villagers have the ability to be listened to, be heard and have their expectations met. Also to continue with the plans to deliver a community strategy through consultation with all villagers to ensure that the Woodchurch voice is heard.



Richard Job (Front Road)

I joined the Parish Council in 2020. I was raised in Woodchurch from a young age. I was fortunate enough to return to live in the village with my family approximately 10 years ago. I wanted to join the council initially to be a voice for the young people as i have a young family of my own.

During my time with the council, i have worked with my fellow colleagues influencing and shaping the village to be more effective in the delivery of key policies and efficient running of the Parish Council. I have a vision to improve the quality of life and environment in Woodchurch, working to identify issues which are important to the residents of the Parish. I am currently also the Police liaison link for the Parish council and would like to maintain this role.

If re elected I would like to work with my colleagues to deliver a more open and effective communication by listening to residents to deliver their visions for their Parish.



Richard Luker (Brattle)

Gina McKay (Six Bells Park)

If elected to the Parish Council, I will work hard alongside fellow Councillors to ensure that we do the very best we can for all residents in representing you in communications and /or meetings with Ashford Borough Council or any other person who might wish to have an impact on our village.

We moved here just before Covid struck and once Covid restrictions were lifted I became a volunteer at The Hub and Woodchurch Village Life Museum where I am also a trustee. I am also treasurer of the Residents Association on our Park and have recently become a Governor of the Federation of Woodchurch and High Halden Primary Schools.

Background:

After leaving school, I trained to be a teacher and spent forty one years in education. After retiring I, along with my husband, travelled round Europe for seven years in our motorhome.

As I mentioned earlier we moved to Woodchurch in March 2020 just before lockdown. The residents of Woodchurch, I have found, are friendly and welcoming and I soon felt 'at home'.



Neil McKay (Six Bells Park)

Since our arrival I have become involved in Woodchurch Village Life Museum, helping out with general maintenance and getting the Museum ready for the latest accreditation. I also help with the Woodchurch Meals on Wheels one day a week and also as a stand in.

With the help of Gordon Baker (Chairman), I am Treasurer, and in the process of helping setting up a Woodchurch Men in Sheds, despite the name it will be gender free. The shed has obtained Lottery funding and a grant from Woodchurch Carnival. We have been allocated some space for our shed at the Community Hall. It is work in progress.

I am also involved as the Secretary on the Six Bells Park Residents Association.

I also think it would be good for Park Home residents in Woodchurch to have a voice on the local Council.

Background:

When I left school I spent 7 years in the Army Catering Corps, 1st as an apprentice then in the Regular Army..

The next 40+ years were spent in the insurance industry and towards the end of my career I was Divisional Business Manager with an annual budget of £8m. In the final 4 years I was a Compliance Officer and fraud investigator.

My wife and I moved from Staffordshire to Woodchurch in March 2020.

We were made to feel very welcome by all Park residents and villagers; it felt and feels comfortable here; a good place to live. Also it would be good to put more back into the Community.



Ciaran Molloy (Lower Road)

Having lived in the village since the mid nineties, when asked, I am always very proud to acknowledge that I am from Woodchurch. The community spirit, the friendly people and our Wealden environment are all outstanding. I have served on the Parish Council for 2.5 years now and if re-elected, I will continue to work for the preservation of the village way of life, to assist in protecting our heritage, the environment and our green spaces for the benefit of all. I will also continue to monitor and protect our excellent network of public right of ways (PROW) and advise on local planning applications where relevant.



Wade Nash (Lower Road)

I have lived in Woodchurch for the past 40 years and during that time have been actively supporting many activities within the village, including the formation of Woodchurch Museum (where I am now Chair of Trustees), the organisation of the original Wings & Things air show, Carnival '22 and also the restoration of Woodchurch Windmill in the 1980s. I have been the Chairman of Woodchurch HUB since 2019, during which time I have taken it from being primarily a resource for local businesses to one that now supports the whole community. One of my roles at The HUB is to manage the monthly Community Newsletter.

I joined the Parish Council five years ago when I retired from a career in Information Technology to allow me to more widely support the Woodchurch Community and also to help ensure greater transparency within the council itself. I have been vice chair of the Parish Council for the past two years and am now the longest currently-serving council member. During the time that I have served it has been very satisfying to see it modernise, communicate more effectively with residents, and embrace new ideas and technologies. It has also been refreshing to see new, younger members of the community, joining the council better representing a wider demographic within the village and bringing with them fresh ideas and perspectives.

If re-elected I look forward to supporting the council's plans for undertaking the most comprehensive community consultation within the village since 1989 - which will help guide the priorities of the new Parish Council moving forward. The appointment in October last year of a new Parish Clerk and the diversity of serving councillors has brought stability back into the council and I hope to be re-elected so that I can continue to be part of the exciting times that lay ahead.



Lucy Quinn (Shadoxhurst Road)

I have lived in Woodchurch since 2015 and love the sense of community and the number of volunteer groups we have. Although originally a lawyer, almost 15 years ago I moved to work for the family business, which I now run in Woodchurch. Although I still work full time, changes in the business over the past three years have given me the flexibility to become more involved with things in and around the village. I was secretary to the Carnival Committee last year and really enjoyed being able to help bring such a fantastic event back to the village. I work closely with Woodchurch HUB, with whom I am a volunteer with the Meals on Wheels deliveries, and was also involved for a number of years with local Young Farmers' Clubs. I am probably most recognisable in the village when walking (and occasionally frequenting the local watering holes!) with my large black German Shepherd.



I have been on the Parish Council since the start of 2022 and was elected as Chair in February 2023. Since serving on the council I have been involved with several of its working groups and in my current position as Chair I have gained experience in all aspects of the running of Woodchurch Parish Council.

I believe I can draw on both my legal background and current business experiences to continue to help the Parish Council effectively support the village over the next four years, and beyond. I also feel that the council has greatly benefitted from the recent appointments of the newer, younger, members from the community - who have brought with them a breadth of new ideas, skills and experiences that are helping the council to represent a wider cross section of the Woodchurch residents.

If re-elected, one of the major things I would like to push forward is a village-wide community consultation that would cover all major aspects of community life within Woodchurch. This will help the Parish Council to identify what really matters to you and would help better focus our efforts and budget accordingly. I am also keen to complete the work already started on updating and extending our online presence.

Catherine Sales (Front Road)

My name is Catherine Sales, I have lived in Woodchurch for 5 years, having previously moved over from France.

I am one of the co-owners of the village Coffee Shop and am also a member of the Woodchurch Players and the Tennis Club.

I feel it is very important to promote and support our local businesses as Woodchurch and the local area have so many to offer.

I can be a voice on the Parish Council representing the younger demographic in the village and coming forward with some fresh ideas to complement those of the more established members.

My main focus would be to challenge over-development in the village by keeping residents informed and inviting them to get involved.

I also think it is important to make sure our local footpaths remain accessible and well maintained.



Robert Woods (Kirkwood Avenue)

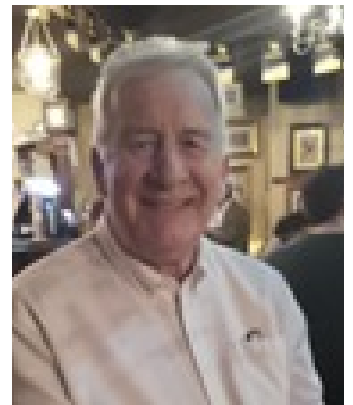
“My commitment to the Woodchurch community hasn’t changed since my first spell as a Parish Councillor. I will work on your behalf to identify the things that matter most to you, improve your quality of life and environment, challenge the threats to our rural way of life, get tougher on crime and anti social behaviour and help to shape the longer term development of the parish. I’d welcome the opportunity to serve this great community once more”

What I stand for - in a single sentence

A Council that displays leadership, listens to all its residents, does the right things for them - and does them right

Relevant experience

- Professionally qualified local government manager with over 40 years’ experience,
- Parish Councillor 2010-18 - I oversaw the Council's finances, chaired the Housing/Local Plan Advisory Committee (and when required, the full Council) I also instigated and managed the Woodchurch Hub project, creating a valuable new community asset at no cost to local taxpayers.
- First Chair - Woodchurch Hub Community Interest Company.
- Parish Clerk 2019-2022 South Willersborough and Newtown
- Prior to retirement - Guest lecturer at Greenwich University, Chair of Hastings Shopmobility, Co-founder-Discover Folkestone, Hythe and Romney Marsh, Trustee of Hastings Civic Society, Manager of 2 crime reduction partnerships and creator of the Hastings Business Improvement District.



Julian West (Hylands Row)

I have lived in Woodchurch all my life over 65 years, and have been on the Parish council for 35 years 8 of those as chairmen.

Working in the NHS for over 48 years

Being honoured with the BEM in 2019 for work in the community

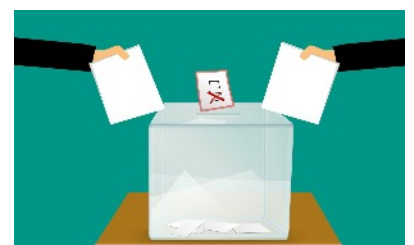
Being the group Scout leader for Woodchurch for 43 years

And have being a bellringer since I was 12 years old teaching and being captain for over 20 years

Voting in the local elections – why vote?

Voting in elections is an important way to make your voice heard on the issues that concern you. It is central to the way in which our democracy works.

Voting in a local election is just as important as voting in a general election, as it allows you to effect change on a local level.



In memory of John Brymer - 1937-2023

Words by Jean Brymer

John was born on 28 November 1937 - a very underweight baby - he survived though and went to a church connected school locally and he became a choir boy - he loved singing. His father died when he was two and a half years' old and his sister Jean was four so they had to go back to the family home with their mother to live with his grandparents, which was not easy. He was one of the last to do National Service at 18 and when he came out he joined the Post Office as an engineer.



We met in 1965 and married in 1967. We both worked in London for the first three years until I became pregnant with Lynn and, the week that Lynn came home from hospital, he started his new career as a Prudential agent. We then moved to a bigger property and there we had Catherine, who was born in 1973. John was a Prudential agent for about 11 years and then changed his career again in July 1981 to become a sub-postmaster until May 1999. We then moved to Cherry Orchard and had 22 years' retirement so we have been very fortunate. We have been married for 55 years and I couldn't have had a better husband - always kind and patient. We met at a dancing class when I was 23 and became engaged in three months and married within 18 months. We were always 'right' for each other and worked well together. I loved him dearly. We are very lucky too to have had two lovely daughters and my sister, Dee, who lives nearby.

Words by Lynn Brymer



I was amazingly fortunate to have a truly lovely father who was so happily married to my mother for many years. He was a steady rock in our lives, wise, affectionate, kind and tolerant. As long as we were happy then so was he. He will be very much missed by us all. His was a long and happy life and after many years of hard work I am so glad he had many enjoyable years of retirement with us all, which he thoroughly deserved.

He put those to good use, belonging to many organisations in the village. The Royal British Legion and Masonry for 50 years. He helped on visitor days at the windmill and museum and distributed the Parish Magazine. For many years he was a bell ringer and looked after the church clock, winding and servicing it before the new winding mechanism was installed. Even then he kept a keen ear on its timekeeping. He also helped at the Primary School to help the children read and found it very rewarding to see their progress. They would put their hands up when asked who wants to read with Mr Brymer. He so enjoyed it all and loved to be involved in the village. Outside of the village, he drove the bus for the Day Centre in Tenterden and helped at the Paula Carr centre, the diabetic organisation which had been so kind to him. His shed was his sanctuary - he loved to turn bowls and candlesticks for us all and would smoke his pipe in there when he relaxed.

He led a full and active life, only slowing towards the end. So now finally, farewell to my lovely dad. You will always be remembered with great love, gratitude and affection. Rest in Peace.

Wade Nash - Woodchurch HUB

Having been involved with John in so many things around the village over the years he will be sadly missed. He was always willing to help wherever he could and I will forever remember his wicked sense of humour. Thank you for everything you have done for the village John and rest in peace.



Woodchurch Patients Participation Group (PPG)

Our next PPG meeting is Monday 22nd May, 6pm in the Memorial Hall Annexe

All Woodchurch Surgery Patients welcome!

We are pleased to confirm our speaker will be Dr Laura Smith, Lecturer in Psychology at the University of Kent and she will be talking about research into Parkinsons

Future Meeting dates:

Monday 21st August

Monday 20th November

If you would like to receive PPG Surgery updates and details of speakers for the meetings, please contact Philippa at philippa@woodchurch.btinternet.com

WoodchurchYardTogether("WYT")

Our next volunteer gardening weekend in the Churchyard is:

13th & 14th

May

The Woodchurch HUB

"Services to Woodchurch Village" awards 2023

The Mayor of Ashford will be presenting the "Services to Woodchurch Village" awards, organised by Woodchurch HUB, on Wednesday May 10th at 4pm in the Jean Mealham Centre, Lower Road. Please come along to see these outstanding members of the village community receiving their awards.

Darran Bugden - for his dedicated 36 years service as our village postman

Elaine and Patrick Byrne - for their tireless support and the many thousands of pounds that they have raised in fundraising for Woodchurch clubs, societies, charities and organisations over the years.

Light refreshments will be available.

The Six Bells Pub

Goodbye to April and the April Showers, which were way, way more than just showers more like Niagara Falls and now we can say a big hello to "Sunny" May (nothing wrong with a bit of optimism)



We celebrated St Georges Day in style (we made it the entire Weekend) and the weather was good to us on the Saturday and seeing everyone outside in the sunshine was such a lovely sight to see. Sunday which was St Georges Day didn't fare as well, weather wise, but we were still able to celebrate indoors.

The Coronation of King Charles III has arrived and we have a month of Bank Holidays to enjoy. With May 1st falling on the Monday and the Morris Men will be celebrating this May Day in their own wonderful way.

We have our Quiz Night Wednesday 3 May, which is fully booked but it is always worth a call on the day to see if any spaces may have become available.

Then the Coronation Saturday 6 May, a day that will go down in history. We are celebrating the day with a Hog Roast and BBQ and music from Bromley Vs Pilcher, who are due to perform from 7pm,

We do hope that the weather is kind to us this month and that the weekend of May 6 2023 is bathed in sunshine so that such a momentous occasion can be enjoyed by all.

Our Best Wishes are sent to King Charles III and the Royal Family for this extremely special occasion.

With Love as Always

Emily & All at The Bells xxx

The Woodchurch Local History Society



generally meets on the first Monday of the month in the village Memorial Hall at 7:30pm. This time we are meeting on May 1st to hear Ken Brooks give us a talk entitled 'Ecclesbourne Glen and Fairlight'. Ken is a well respected local historian from Hastings and last year he gave us a beautifully illustrated talk about the fishing industry and the life of the fishing community around Rock-a-Nore in the Old Town of Hastings..

This time he will be telling us how the communities at Ecclesbourne Glen and at Fairlight (on the cliffs between Hastings and Pett Level) tried to cope with the effects of coastal erosion. Ecclesbourne Glen (now part of the Hastings Country Park) was once the setting for Victorians and Edwardians to take pleasure from cafes and tea shops, to take enchanting walks around waterfalls and to gaze at fantastic views. Ecclesbourne Glen was also the home of some coastguard cottages which ultimately came to grief due to erosion. Finally, expect some dinosaur fossils and footprints found in the cliffs there.

New members of our society are always welcome and can pay an annual membership fee of £12 on the night. Alternatively, if you wish to come along just for the night then the entrance fee is £3. There is no need to book - just turn up before 7:30pm. You will be very welcome.

Geoff on 01233 860393.

WOODCHURCH PLAYERS NEWS

Unfortunately we have had to cancel our Ayckbourn play 'Relatively Speaking' in June.



However we will be holding auditions for our next production.....

'A Musical Extravaganza' on stage on 22nd & 23rd September

This is an evening of song, dance and sketches. Arranged and directed by Ann Tiplady and Lynne Andrews



AUDITIONS WILL BE HELD ON 16th AND 17th May. In the Memorial Hall.

16th OF MAY Auditions for children at 6.30pm

17th MAY Auditions for adult performers 8pm start.

Please come along, with an 'audition piece', if you can.

Ann and Lynne have already arranged a programme for this evening which will consist of music, songs and sketches.

Booking Details will follow shortly. Seating will be at tables.

Val Smith

Unfortunately, Sheila Farmer, the intended Speaker for our April meeting developed Covid, which, of course, left us in a bit of a quandary. However, we need not have worried, as at extremely short notice, our old friend, Geoff Turner, nimbly stepped into the breach and saved the day by expertly delivering his talk with the intriguing title "Hastings - Winkle Up"! Quite a change to Sheila's own talk entitled "What Women Wore," but WI ladies are very adaptable, and in no time at all we were learning about the life of the fishermen in Hastings Old Town just beneath the East Hill Cliff Funicular Railway on the shingle beach called the Stade (Saxon for landing place) and home for over 700 years to Europe's largest beach-launched fishing fleet. The working fishing boats, the net huts and the Fisherman's Museum can all be seen here, and nearby are stalls selling freshly caught fish, winkles, cockles and all other locally caught seafood. The Winkle Club is a renown charitable organisation formed by the fishermen back in 1900 to help the less fortunate families of Hastings. Each Winkle Club member (Winkler) should carry a winkle shell at all times, so that it can be produced when challenged to "Winkle Up". Failure to do so results in a fine for the local charities. On special occasions, members of the club meet on Winkle Island in Rock-A-Nore Road on the sea front where a sculpture of a giant winkle can be found. In the past there have been many famous Winkle Club members, including the late Queen Elizabeth and the Queen Mother, and Pathe News have recorded Sir Winston Churchill receiving his own golden winkle in the Old Town in 1955. As always, a big thank you goes to Geoff for this fascinating talk!



The competition this month "Something Green" was won by Pat with her attractive green vase. Next month's competition will be "Something Blue" and the meeting will take place on Tuesday, 9th May at 7.15 pm as usual in the Memorial Hall, when we will be discussing this year's Resolution - Clean Rivers for People and Wildlife. This will be followed by a social time, which will include a "Party Piece" by Gillian, a Eurovision Quiz and a Royal Quiz and, to celebrate the King's Coronation, cake and wine will be served. If possible, members should come dressed in red, white and blue. Do hope you can join us!



Woodchurch Art Society

Some dates for your diary so you don't forget our Annual Exhibition

26th May 7pm - 9pm
27th May 10.30am - 4.30pm
28th May 10.30am - 4.30pm

Quiz

Saturday 13th May

At 7:30 at The Memorial Hall

Tables up to 6 people

£5 per person

Bring your own refreshments,
but tea, coffee and cakes will
be on sale during the interval.

To book your table, ring Josie
on 860363

Or

josie.mackie@btinternet.com

Organised by Woodchurch WI

Bring a picnic to enjoy on The Green

Vintage Tea and Cake on the Lawn

WOODCHURCH VILLAGE

Flower and Produce Show

We are reviving 136 years of our village heritage

Hosted biennially by
WOODCHURCH IN BLOOM
WOODCHURCH GARDEN SOCIETY

29th July 2023

on The Green

and The Memorial Hall

10.30am 'til 3pm

Judging 11am - 2pm

Incorporating Traditional Country Crafts and Displays

Show exhibits in The Memorial Hall. Presentations 3pm

With 60 categories to choose from and only 30p per entry!

Please pick up an Entry Form from The HUB, or download a copy from WoodchurchinBloom.com or email WoodchurchinBloom@hotmail.com

Everything Outside

Bringing New Life
To Your Garden

For A Quick Quote From A Company You Can Trust Call

☎ 01580 766 232 ☎ 07795 465 861

Welcome To Everything Outside

We cover a wide range of services to meet the requirements of our ever-growing client list, if you are looking for a company you can trust to provide a high standard of quality work covering

- ✓ Gardening
- ✓ Garden Design
- ✓ Fencing
- ✓ Clearance
- ✓ Landscaping
- ✓ Hedge Cutting
- ✓ Tree Surgery
- ✓ Digger Work

and much more. Then call our experienced team today on 07795 465 861. To view our full range of services, click on the link below.

Our head office is based in Tenterden, Kent and means we are in the perfect location to proudly service Kent and East Sussex. All our services are tailored to each job we carry out and our team are experienced in all aspects of fencing and landscaping services making us your number one choice for all work you require.

Great Work

Great Reputation

Great Price

OUR SPONSORS



WE'RE OPEN:
MON - FRI: 08:00 - 17:30
SAT: 08:00 - 12:30

**SO MUCH MORE
IN YOUR LOCAL
COUNTRY STORE**

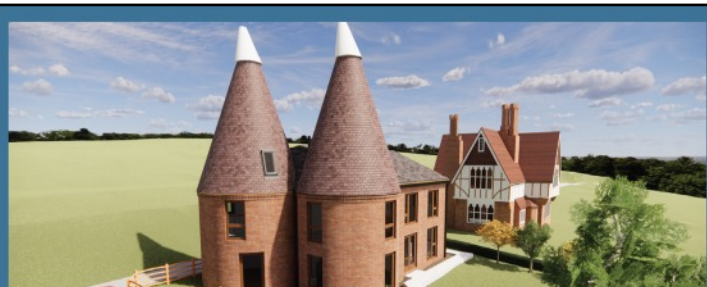
Of course we sell agricultural parts and machinery.

We also sell outdoor and PPE clothing, alongside hand tools, adhesives, hardware, barn paint and much more...

We're online too: ernestdoeshop.com

Hendon Barn, Woodchurch
Ashford, Kent TN26 3QP
Tel: 01233 224860

 **ernestDOEpower**
where you buy with confidence



Design, planning & build services

Now offering full 3d design development for your extension, new build or conversion project. Please call us for an introduction to our design services at our Woodchurch office.

01233 861177 vernacularhomes.com



fab feet Professional Foot Healthcare

www.fabfeethealthcare.co.uk

**Delivering high quality Podiatric care in the
comfort of your own home**

Providing a reliable and friendly service of professional treatments for all of your foot ailments:



Call Michelle on:

Tel: 01233 731207

Registered & Insured



**Try our professional
Home News
Delivery service**

**New customer introductory
offers available**

Have your paper delivered before you go to work and read it with your breakfast!

- ✓ Early delivery - before 6.30am (7.30am at weekends)
- ✓ Excellent communication - phone or email ALWAYS responded to
- ✓ Different billing options available
- ✓ All national and local newspapers available to order
- ✓ All magazines available to order
- ✓ Well established reliable company with over 4,400 customers

**Place your order today by telephone on
01580 763183**

or email us at mail@jackiesnews.co.uk
or go to www.jackiesnews.co.uk/place-your-order



EST. Over 35yrs

**Extensions
General Building
Property Maintenance
Brickwork/Stonework Specialist
Landscaping**

Free Estimates

Chris@cgmbuildersltd.co.uk

www.cgmbuildersltd.co.uk

KENT 
HOLIDAY COTTAGES

+44 (0) 1233 860 293

info@kentholidaycottages.co.uk



You could advertise your company here
from as little as £10 per month

To help keep the Newsletter free for the
village please become one of our
sponsors or give a donation if you can.

www.woodchurchhub.uk
or Contact The HUB for more information



Woodchurch Cottage Flowers

We are an artisan florist and flower grower. We grow and sell the most amazing seasonal English flowers. All grown here at our smallholding in Woodchurch in Kent. We are a small flower farm working with nature and the seasons.

Call or text 07969 449235

www.woodchurchcottageflowers.co.uk

D K Plastering Services

All plastering work
carried out



Fully Insured Professional Workmanship

For a clean & tidy job call David

Mobile

07974 891795

Or Email

dk.plastering@hotmail.co.uk



B.T.C


Ben Taylor Carpentry & Construction

07585509817

All aspects of carpentry and
construction

- extensions
- porches
- bespoke fitted furniture
- patios
- fencing and landscaping
and much more

 B.T.C

 b_t_c_construction

 07585509817



KING'S CORONATION EVENTS AROUND WOODCHURCH

Saturday 6th May

11am Kings Coronation - Westminster Abbey

Six Bells Pub Hog Roast and BBQ

Woodchurch Morris Dancers
Outside the Six Bells Pub

7pm Music at the Six Bells Pub

9:15pm Lighting of the Beacon on The Green

Monday 8th May

10am-12am The Big Help Out at All Saints Church
including the Church Coffee Morning

10am-1pm The HUB open for information

10am-4pm Museum open for the Bank Holiday

2pm-4pm Coronation Tea Party at the Jean Mealham Centre

**If you are organising any other events over the weekend
please contact The HUB and let them know.**

Coronation Tea Party Celebration

Monday 8th May

2:00 – 4:00 pm

**The Jean Mealham Centre,
Lower Road, Woodchurch TN26 3SQ**

*Do come & make it a Day to Remember
and show your support!*

Helpful to know numbers
so please book by
calling 07798 566849
or at the HUB

Donations welcome

Parking is plentiful & free



Woodchurch Village Life Museum

You are invited to attend our AGM on
Wednesday 10th May at 7pm in
Woodchurch Memorial Hall.
Josie Mackie is giving her talk on
“Woodchurch in the 1920s”.

Drinks and nibbles provided.

The museum is open each weekend 10 am - 4pm until the end
of October or contact enquiries@woodchurchheritagetrust.uk
and we'll open up at other times, especially for small adult
groups or school classes.

We are a short walk from All Saints Church, down Susan's Hill,
with many interesting exhibits about life in Woodchurch.
Admission is free.



MUSEUM 150+ Lottery Draw



Support your local museum- you could win a
£50/£30/£20 prize every month.

Draw numbers for 2022/23 are still available
For more information please contact Joyce via The HUB -
enquiries@woodchurchhub.uk or 01233 861381

April 2023 Draw Results

1st prize	£50	Elizabeth Beck	497
2nd prize	£30	Tony & Elaine Warne	369
3rd prize	£20	Claire Silcock	445

Simple Kent Funerals

Relaxed, flexible, imaginative, economical, caring

Applefield Cottage, Redbrook Street, Woodchurch TN26 3QS

Call Toby on 07806 613297 • www.simplekentfunerals.co.uk

We work in an eco-friendly and environmentally-sustainable way and are certified as a net carbon neutral business

Excess of Expenditure over income for year ended 31/12/2022: £8,500

Current funds in hand: £18,500

Youth work fund £28,000 (restricted use)

Here to Help £2,000 (restricted use)

Voluntary Giving and Grants in 2022:

<i>Donations</i>	<i>£5,885</i>
<i>Gift Day</i>	<i>£3,392</i>
<i>Coffee Mornings</i>	<i>£2,193</i>
<i>Building Maintenance Fund Grants</i>	<i>£0</i>
<i>Canterbury Diocese-Heating Grant</i>	<i>£2,400</i>
<i>Carnival Grant - Church Wall</i>	<i>£1,000</i>
<i>Ashford Council - Here to Help Grant</i>	<i>£1,810</i>
<i>Kent County Council - Woodchurch Youth</i>	<i>£2,000</i>
<i>Metropolitan Police - Woodchurch Youth</i>	<i>£500</i>
<i>VAT Reclaimed</i>	<i>£942</i>

Fundraising 2022:

<i>Kent Choir Concert</i>	<i>£1,520</i>
<i>Colliery Band Concert</i>	<i>£1,238</i>
<i>Carnival Craft Stall</i>	<i>£195</i>
<i>Church Craft Stall</i>	<i>£794</i>
<i>Drawtones Concert</i>	<i>£1,909</i>
<i>Christmas Tree Festival</i>	<i>£2,325</i>
<i>Shirkoak Park / Six Bells Park Raffle</i>	<i>£426</i>
<i>Sundry Sales</i>	<i>£91</i>

Thanks to those who help us:

- Our volunteer gardeners
- Flower arrangers
- Our fundraisers
 - Those who run coffee mornings
- Those who clean our church
- Those who help with odd jobs

Parish of Woodchurch

All Saints Church

Gift Day

Saturday 13th May

10am-1pm



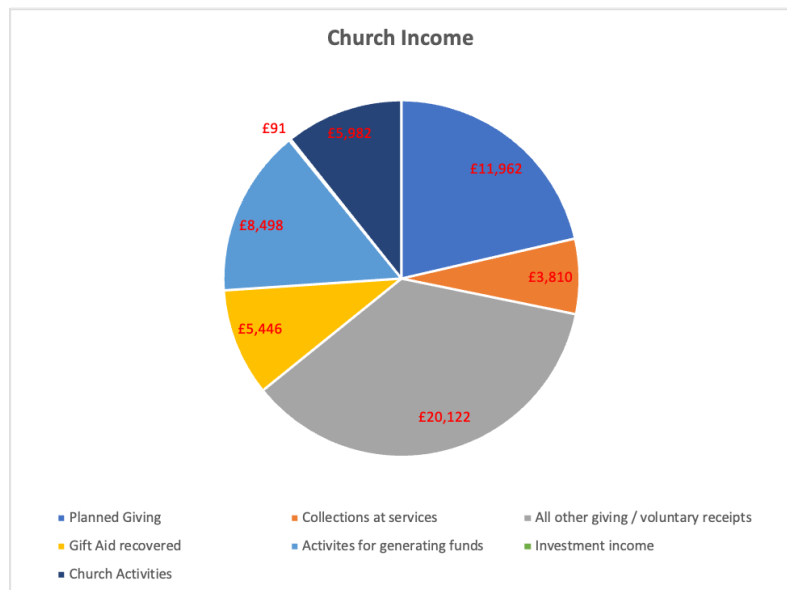
Please support your local Church

***Come along on the day to meet us,
visit our craft stall, enjoy refreshments and make a
donation, or you can give online either regularly or as a
one-off donation:***

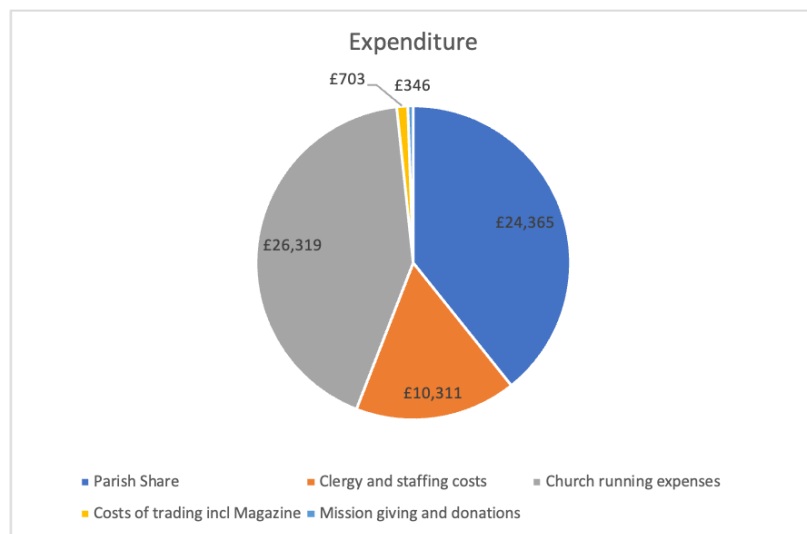
<https://www.parishgiving.org.uk/donors/find-your-parish/woodchurch-all-saints-ashford/>

Reverend Sue Rose revsuerose@outlook.com 01233 820266

Total income for 2022: £55,911 (2021: £51,951)



Total expenditure for 2022: £64,445
(Heating project £5k, wall £2K)
(2021: £112,041 – Heating system £64,145)



What did we do during 2022

- Set up a fundraising group and worked with the local community to raise over £6,000 after costs with concerts and events
- Started to repair the church wall (big project)
- Held successful coffee mornings and warm days for the village
- Further developed the foodbank and launched “Here to Help”
- Re-launched Open the Book in school (Bible based activity)
- School holiday activity clubs
- Held pet service

What are we planning to do with any funds raised?

- Decommission our old heating system and remove the Victorian flue
- Continue to repair the church wall
- Improve our disabled and pushchair access
- Refurbish the toilet and kitchen area
- Redecorate the church and update the layout to enable better community use (we have started on plans)

What else are we planning to do in the future?

- Start a toddler group in church, run by families for families
- Launch Eco church
- Continue to improve our welcome and hospitality to all
- Include some more informal services
- Work with partners to continue to develop “Here to Help”
- Courses for those exploring faith