



WOODCHURCH COMMUNITY NEWS

The village community working together

March 2023

Contact us: Telephone 01233 861381 Email enquiries@woodchurchhub.uk Web www.woodchurchhub.uk

OVER 1,000 COPIES distributed every month in the Woodchurch area

WOODCHURCH Community Calendar



Weekly events:

Saturdays:

Boot Camp 9:00am-10:00am on the Village Green

Sundays:

Outpost Church 10:00am-12:00pm in the S&G Community Centre, Lower Road

Mondays:

Pilates 9:00am-10:00am in the Memorial Hall

Tai Chi and Qigong 9:45am and 10:45am at the S&G Community Centre, Lower Road

Baby Yoga 1:00pm-2:15pm in the Memorial Hall

Knit and Natter 2:00pm - 3:30pm in the Pop-In Centre Lodge

Line Dancing 2:30pm - 4:30pm in the Pop-In Centre

Beavers 6:00pm-7:00pm in the S&G Community Centre, Lower Road

BodyTone 6:15pm-7:00pm at the Memorial Hall

BodyFlex 7:15pm-8:00pm at the Memorial Hall

Scouts 7:30pm-9:00pm in the S&G Community Centre, Lower Road

Tuesdays:

Pilates 9:00am-10:00am, 10:15am-11:15am and 6:00pm-7:00pm in the Memorial Hall

Yoga 10:00am-11:15am in the Pop In Studio

Coffee Morning 10:00am-12:00pm in All Saints Church

Little Leaves Forest School 10:00am - 12:00pm under 5's Play Group based in Woodchurch

Winter Warmers 10:00am-4:00pm at All Saints Church

Community Warden 1:00pm-3:00pm in the HUB

Puzzle Club 2:00pm-4:00pm in the Pop In Lodge

Blend Youth Cafe 3:00pm-5:00pm in All Saints Church

Cubs 5:30pm-7:00pm in the S&G Community Centre, Lower Road

Wednesdays:

Pilates 9:00am-10:00am in the Memorial Hall

Museum Volunteers 9:30am-12:00pm at the Museum

Yoga 10:00am-11:15am in the Pop In Studio

Over 60s Pop-In 2:00pm-4:00pm Tea and coffee and boot fair marquee at the Jean Mealham Pop-In

Rainbows 5:00pm-6:00pm in the S&G Community Centre, Lower Road

Fish and Chips 4:30pm-7:30pm in the Village Car Park

Brownies and Guides 6:00pm-7:15pm in the S&G Community Centre, Lower Road

Morris Dancing Practice 5:00pm-6:00pm in the S&G Community Centre, Lower Road

Thursdays:

Art Society 10:00am-1:00pm at the Memorial Hall

Previous editions of the Newsletter can be found on The HUB Web site
www.woodchurchhub.UK



Thursdays (cont):

Margaret Morris Movement 2:15pm-3:15pm in the S&G Community Centre, Lower Road

BodyBlast 6:30pm-7:20pm at the Memorial Hall Annexe

Badminton 7:00pm-11:00pm at the Memorial Hall

Explorers 7:30pm-9:30pm in the S&G Community Centre, Lower Road

Fridays:

Soup Fridays 12:00am-2:00pm in the Jean Mealham Centre

Other Events:

Wed 1st **Six Bells Quiz Night** 7:00pm at The Six Bells Inn

Sat 4th **Gillian's "Souper" Lunch** - 12:30-2:30 in the Memorial Hall

Sun 5th **Table Top Sale** 9:00am-12:00am at the Jean Mealham Centre

Morning Worship 11:00am at All Saints Church

Evensong 6:00pm at All Saints Church

Mon 6th **CARM** 10:30am to 12:30pm in the Memorial Hall

WLHS - Elizabeth Barton. Maid of Kent. 7:30pm in the Memorial Hall

Thu 9th **Connecting Woodchurch** 6:30pm at All Saints Church

Sat 11th **Museum Action Day** - from 9:30am at Woodchurch Museum

RDA Charity Quiz Night 6:30pm at the Jean Mealham Centre

Sun 12th **Newspaper Collection** Woodchurch Scouts

Holy Communion 11:00am at All Saints Church

Tue 14th **WI 96th Birthday Meeting** 7:15pm at the Memorial Hall

Thu 16th **Social Prescribing coffee morning** 10:00am-12:00am at the Jean Mealham Centre

Sat 18th **WinBloom "Give and Take" event** 10:00am -2:00pm at All Saints Church

Coffee morning in aid of Tommy's, The Baby Charity 10:00am-12:00am at 44 Lower Road, Woodchurch

Sun 19th **Morning Worship** 11:00am at All Saints Church

Thu 23rd **Parish Council Meeting** 7:00pm in the Memorial Hall Annexe

Fri 24th **Boldshaves Gardens opens for 2023**

Sat 25th and Sunday 26th **WYT Churchyard tidy up weekend** at All Saints Church

Sun 26th **Holy Communion** 11:00am at All Saints Church

Fri 31st **Ashford Astronomical Society** - The First Spacemen 7:00pm in the Memorial Hall

The Full Community Calendar can be found at www.woodchurchhub.uk/community-calendar





WOODCHURCH PARISH COUNCIL • **UPDATE** •

From 4 May 2023, voters in England will need to show photo ID to vote at polling stations in some elections.

This will apply to:

- Local elections
- Police and Crime Commissioner elections
- UK parliamentary by-elections
- Recall petitions
- From October 2023 it will also apply to UK General elections.

www.electoralcommission.org.uk/i-am-a/voter/voter-id

The most common forms of acceptable photo ID are:

- Passport issued by the UK, any of the Channel Islands, the Isle of Man, a British Overseas Territory, an EEA state or a Commonwealth country.
- Driving licence issued by the UK, any of the Channel Islands, the Isle of Man, or an EEA state (this includes a provisional driving licence)
- A Blue Badge
- Older Person's Bus Pass funded by the Government of the United Kingdom

For a full list of acceptable photo ID please visit the Web site above, or contact The HUB.

If you don't have accepted photo ID, you can apply for a free voter ID document, which is known as a Voter Authority Certificate. You can apply before the 25th April either online (see link above) or by post. Printed application forms are also available at the Hub or can be downloaded from [The HUB Web site](#).



Are you thinking of becoming a Parish Councillor?

If you would like to be nominated as a candidate in the May elections you can download the nomination papers and guidance document from [The HUB Web site](#). Nomination papers need to be completed and returned to The Civic Centre, Tannery Lane, Ashford no later than 4pm on Tuesday 4th April 2023.

Proposed footpath diversion behind The Rare Breeds Centre

Your Parish Council discussed the proposed diversion and extinguishment of part PROW AT204 within the environs of the Rare Breeds Centre and agreed to submit an objection statement with a suggested solution. The PROW & Access Service Department, Kent County Council's (KCC) proposals have been added to the [HUB Web site](#). At your Parish Councils request, the submission date for comments has also been extended by two weeks to Saturday 4th March. We constantly recommend that those interested parishioners who have not already responded to Mr Michael Tonkin of KCC, and would like to do so, that you email KCC as soon as possible using the following contact details:

Michael Tonkin PROW & Access Service, Kent County Council, Invicta House, Maidstone, Kent.
Telephone: **03000 41 03 25** Email: michael.tonkin@kent.gov.uk

How to contact your Parish Council

In person: By talking to one of your councillors - details on the Parish Council Web site

By email: clerk@woodchurch-pc.gov.uk

By phone: 01233 861381

Through The HUB: Place your correspondence in a sealed envelope marked "Parish Council" and deliver to The HUB

By post to: Woodchurch Parish Clerk, c/o Woodchurch HUB, Front Road, Woodchurch, Kent, TN26 2PA

Through the contact form on the Parish Council Web site: www.woodchurchhub.uk/parish-council/

Parish Council meetings

Parish Councils meetings are usually held on the 4th Thursday of each month in the Woodchurch Memorial Hall Annexe.

Upcoming roadworks in and around Woodchurch

Information from KCC and one.network

Road Closed - Shadoxhurst Road, near Hengherst Farm 3rd - 14th April 2023

Closure in force: Road Closed

Description: KCC Road Resurfacing



**How to report highway problems
including potholes, streetlights and
broken signs**

www.kent.gov.uk/highways

Play Area Update

Several residents have recently been enquiring about the repairs to the play area on The Green - and also the future of the play area.

In December last year the Parish Council engaged a specialist playground contractor to repair the areas that are breaking up. Unfortunately the repairs cannot be carried out during cold weather as whilst it sets low temperatures affect the strength of the resin used in the surface material. It is hoped that the weather will soon be warm enough for the repairs to be carried out.

The Parish Council have also formed a working group to explore possible futures for the play area. They have already met with playground experts from Ashford Borough Council and have visited local parks that have recently been updated. Estimates for the cost of modernisation of the play area are in the region of £150,000 to £300,000. Whilst this is a significant amount of money the Parish Councils still wants to move forward with the feasibility studies and identify possible options for funding. Clearly, before any proposals can be finalised there will be full consultation with the village residents (especially the children) in order to see what is actually needed.

The Six Bells Inn

Its just around the corner, not long now !! Spring is on its way and the month when the clocks go forward is here.



What a busy month March is, 1st is St David's Day and our Quiz Night, which is already fully booked (so please make sure you book early for April's on the 5th) then onto Friday 17th St Patricks Day, Saturday 18th is Brad Pittance and the Pirates Day (well evening as they are coming to entertain us with their fantastic music) Then an extremely important day on Sunday 19th March..... it's "Mothers Day" and we are taking bookings for our fantastic roasts on that special day and a little gift awaits all of the wonderful Mums and everyone that chooses to identify as a Mum on that day!!

You may have noticed that we are undertaking some maintenance works on our beloved "Bells" we felt that she could do with a little bit of a face lift and some pampering, along with the rest of us who are in need of a little bit of refurbishment (some more than others) !! There is nothing to worry about it, the scaffolding is there so that we can undertake the works without upsetting the wisteria and the works will be finished before she blooms.

Our Chef has been hard at work producing his Springtime Menu and we look forward to welcoming you all to sample the delights, which we have, of course, needed to try out first.

We have many more surprises in store over the coming months and all of them are good ones. The works will enhance and guarantee that The Bells remains the wonderful, warm friendly pub that she has always been.

We all looking forward to seeing you all soon.

With love as always - Emily and Co. xx

Queen's Green Canopy

on behalf of Woodchurch village the Parish Council is currently taking part in the Queens Green Canopy project. www.queensgreencanopy.org. The nationwide project is creating a living legacy and lasting tribute to her late Majesty by planting over a million trees across the nation. Woodchurch has been awarded ten trees which will be planted within the Wildlife Meadow (see plan below), during the next few weeks. A number of villagers and societies have already approached the Parish Council to adopt a sapling however, we still have a number awaiting adoption. If your are interested in helping and want more information, please contact the Parish Council or The HUB.



1. English Oak
2. Field Maple
3. Common Hawthorn
4. Common Hazel
5. Silver Birch
6. Field Maple
7. English Oak
8. Common Hawthorn
9. Common Hazel
10. Silver Birch

Approximate Location of QGC Trees

Woodchurch Art Society

Some dates for your diary so you don't forget our Annual Exhibition

26th May	7pm - 9pm
27th May	10.30am - 4.30pm
28th May	10.30am - 4.30pm

Please park safely outside our school

Following on from reports from the school and local residents in Woodchurch a local police officer has been out checking on parking at the junction of Susan Hill and outside the school. Words of advice have been given to various people. This is to make it safe for the children when arriving and leaving school with their parents / carers.



The school has put cones out, to stop people parking near some of the junctions, so do not move them. They are there for a reason.



We will be attending again, and at other schools in the local area where we get reports.

Katherine Richards
(Police, PCSO, Ashford Community Safety Unit)

WOODCHURCH SURGERY UPDATE

We have been inspected by the Care Quality Commission (CQC) last August and it has been a painfully drawn-out process. Having heard nothing for months we received our report this month. We were nominated for "outstanding" in Care, Responsiveness and Well-led; however the panel decided that there was not enough evidence on their spreadsheet so have awarded a "good" overall. The summary comment is: "Patients were respected and valued as individuals and were empowered as partners in their care, practically and emotionally, by an exceptional and distinctive service."

I guess that we can't be happier with a comment that summarises what we set out to do at the start of every day. I was disappointed by the panel's decision but after a bit of soul searching, I realised that the main reason for the CQC's existence is to highlight unsafe care and implement changes. I am very grateful for the time taken by the patients that spoke to the inspector and the members of the Patient Participation Group that gave up their time to talk to the inspector so passionately about the surgery.

And so we go on... At the end of February there was a launch promoting Bowel Cancer Screening. You might have seen some adverts on TV with our national treasure, Alan Titchmarsh, promoting screening. Bowel cancer is still a leading cancer with nearly 43,000 new cases a year and nearly 17,000 deaths a year. The good news is that over half the people survive more than 10 years.

Over half of bowel cancers are thought to be preventable as contributed to by eating too much processed meat, obesity, alcohol, smoking, not exercising and not eating enough fibre. Some cases are more genetic so your risk is increased if a very close relative has had it under the age of 50 or if 2 close relatives have had it at any age.

The NHS has a screening program for those aged between 60 and 74 years old. You basically put a bit of your poo on a stick and post it back to try and detect old blood released from a tumor in your bowel. There are other reasons for blood other than cancer so further tests are needed to find out why blood might be present. The screening is slowly being rolled out to those between 50 and 74 years old. If you are over 75 you can ask for a test every 2 years by telephoning 0800 707 60 60.



Sadly, bowel cancer can affect all ages and even if you have had recent screening please seek advice if you have had a change in bowel habit (usually runnier) for more than a month, rectal bleeding (especially if mixed in with the stool), pain/bloating/weight loss.

March celebrates national Down's Syndrome day on 21st (Down's is characterised by 3 number 21 chromosomes) and there are some local charities to support such as

"21 Together". The month also celebrates Ovarian cancer awareness - perhaps one for next newsletter. In the meantime, nurse Sarah and myself are trying to do some TikToks to promote cervical screening so watch out for those if we manage to keep a straight face in front of a camera.

With best wishes to all of you from the Surgery
Jack Hickey, GP

Social Prescribing

Are you worried about a friend or relative - do they suffer with mental or physical health needs? Do you find your struggling with day to day tasks or having difficulties with your mobility or managing your care needs? We can offer support and guidance on services and support for you and your family whether it's a blue badge, benefits or community engagement.



Please pop along to any of our social prescribing coffee mornings to meet with a team member who is more than happy to discuss further. Or pop along for a coffee and build new friendships. Dates in Woodchurch are below!

- 16th March - Woodchurch pop in - 10am - 12pm
- 20th July - Woodchurch pop in - 10am - 12pm
- 16th Nov - Woodchurch pop in - 10am - 12pm

Social Prescribing coffee mornings are also held at Hamstreet Surgery, Charing Surgery and Ivy Court Surgery. Please contact The HUB for details.

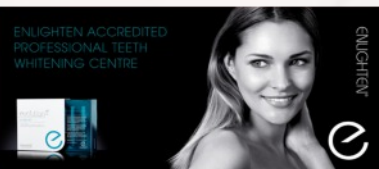
Surgery Opening Hours

Monday to Friday 9am to 5pm



Hamstreet
Dental Clinic

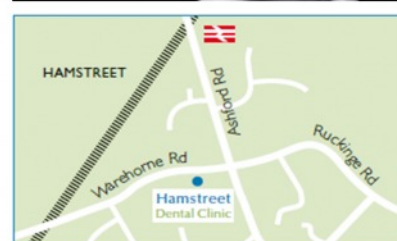
Welcomes You



Where to find us...

Hamstreet Dental Clinic
Warehorne Road
Hamstreet
Kent TN26 2JJ

Find us on facebook



Tel: 01233 733848

Email: hamstreetdentalclinic@gmail.com

Woodchurch WI was founded in 1927 and next month will be celebrating its 96th birthday. At the March meeting, to mark the occasion, the Institute will not only be partying but discovering what life was like for our village all those years ago. Member and local history enthusiast, Josie Mackie, will reflect upon life at that period. So do come along to the meeting on the 14th March at 7.15pm you will be made most welcome.



At his month's AGM however, we ensured we stayed on course to achieve our centenary year, a full committee for 2023 was re-elected. A well deserved cuppa and social time followed before settling to our evening's entertainment presented by local scouts Jacob and Jonathan. For the next half hour we were delighted to have an eclectic mix of music and song ranging from classical Bach to modern hip hop. Jonathan played Prelude in C Minor followed by a piece entitled "Moonbeams"; before we began tapping our feet to the 1960's beat of "Fings aint't what they used to be". Jacob then introduced us to a more modern music genre by performing "See you again" then moving on to hip hop/pop rock with "A Glimpse of you". A change again in tempo and mood, this time with a rap rhythm was a song, 'Alexander Hamilton' from the musical "Hamilton". This very talented duo ended their session with a John William's fun piece echoing honky tonk and swing entitled 'Cantina Band' from "Star Wars". This was a super evening demonstrating both of their musical skills and a well earned thank you goes to them.



Members have a very varied programme to look forward to this year plus a variety of social events where we hope to meet you.

- 14th March 96th Birthday Meeting with wine and Nibbles plus Life in the 1920s
- 11th April What Women Wore - a presentation by Sheila Farmer

If you can't make one of our meetings do come along to Gillian's Souper Lunch in the Hall on Saturday March 4th, there are still some places available.

Also remember to book your table for the WI Quiz in May 13th in the Hall.

2023 Spring Village Clean Up Saturday 1st April

To help our industrious village litter pickers and the growing number of individuals who regularly clear the ditches and hedgerows in and around the Woodchurch, please come and join us on Saturday 1st April to participate in our Spring Village Clean Up.



Bags, high viz jackets and litter pickers will be available - but if you have your own then please bring them along. See you outside The HUB from 8am.

Meals Delivery Service now available in Woodchurch

The "meals-on-wheels" style Meal Delivery service has been running successfully in Woodchurch since the beginning of February 2022 and now has many Woodchurch residents making regular use of the service.



This is a daily delivery of a 2-course hot meal from 12:15 pm, Monday to Friday (not currently at weekends). You do not need to subscribe to every day.

This service is being organised in Woodchurch by The HUB, in conjunction with the Tenterden Social Hub. Your meal will be delivered piping hot by Woodchurch's own volunteers.

There are still spaces for customers and also a need for reserve drivers.

For more information please contact The HUB at enquiries@woodchurchhub.uk or phone 01233 861381 or contact Tenterden Social Hub on 01580 762882.

Plants wanted for the Jean Mealham Centre



A number of small planted areas have been added in and around the Jean Mealham Centre grounds which volunteers tend and maintain. If you have any small shrubs and other perennial plants that you could donate, they would be most welcome; we can dig up or divide.

Also, if you can spare an hour or so to work with the small team to help maintain these areas, please contact Joyce through The HUB.



Village Lost Property at The HUB

If you find any lost property around the village please bring it to The HUB. We will hold it there waiting to be claimed for four months. If you have lost something around the Village please let The HUB know as it may have been handed in.

All Saints Church



Dear Friends,

I'd like to start this month by thanking Patrick and Elaine Byrne and the Big Thin Red Line for their fundraising event in February. Some of us got together and took ourselves back to our teenage years. (in my case anyway - I think others were far too young to remember the 1970s). We dressed outrageously, danced a lot, ate a buffet with food which reminded us of those times, and had a great deal of fun... and the event raised £1,000 towards the refurbishment of our toilet in church (if you have visited recently you will have seen that this is long overdue!). How fantastic, to have so much fun, and raise money too - my personal thanks to all who gave so generously.



We have recently had a feasibility study completed by our church architect, and we now have some outline plans for a big project to make the building more suitable for our village community. We plan to have a more accessible wheelchair and pram-friendly entrance with an internal glass door to make the church more welcoming. We also plan to refurbish the kitchen area and look at making changes to the rear of the church. We would love to form a small project group to take this work forward - if you have an interest in historic buildings, and/or experience in grant applications, then please get in touch. We are keen to ensure that All Saints Church continues to serve the local community for many years to come.

Thanks also to those who have continued to help to support our Here to Help scheme. In the last 5 months we have raised over £6,000 and donated over £4,000 to local people in need. Our foodbank has been well used, and regularly topped up using kind donations of food and by shopping using the cash donations we have received. We have delivered food parcels to those who cannot collect from the church, and we know that for some people "heating or eating" has become a reality. We have also been trialling a weekly fresh produce stall at the foodbank on Tuesdays.

My thanks to those who volunteered to run our warm space in church during January and February - sessions were well attended by an age range from 0 to 90+ years, which was wonderful to see. We are grateful to Ashford Borough Council and our village donors in helping us to provide this service. Do get in touch if you have ideas about community use of your church in Woodchurch.

Every Blessing Reverend Sue.

01233 820266. revsuerose@outlook.com

Helping save and preserve our Church

ASHFORD YOUTH JAZZ ORCHESTRA IN **CONCERT**

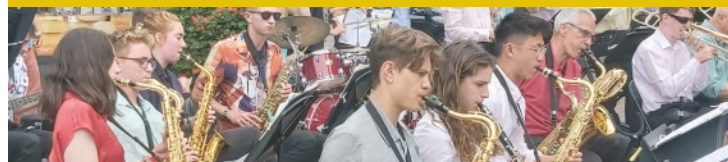
at **ALL SAINTS
CHURCH**
WOODCHURCH

*A lively mix
of Traditional, Swing,
Contemporary and
Modern Jazz*

Saturday, 22nd April 2023

Doors open 7pm Concert starts at 7.30pm

LICENSED BAR and Raffle



Tickets £10 (includes light refreshment) **Online from:**

<https://www.ticketsource.co.uk/all-saints-woodchurch>

or if you prefer - visit **WOODCHURCH HUB** 01233 861381

(Open Monday-Friday 10.00am-1.00pm Saturday 10.00am-12 midday)

Crafty Springtime Fun!

Can you believe it is March already? You can feel the days getting longer now. If you walk through Woodchurch you will see the amazing array of spring flowers, bursting into life, turning their heads up to the light, and filling our gardens and outdoor spaces with bright colour. Gardens and craft are synonymous with village life and so we have two very special upcoming events. Please come along to our coffee mornings (held on Tuesdays in the church) to enjoy home baked cake and refreshments, whilst you look at the wonderful array of Easter crafts on our craft stall. All crafts are made and supplied by local people, and sold in aid of All Saints. The stall only started last year and has proved immensely popular for that last minute present or special gift. If it is gardens that interest you more then the fabulous Woodchurch in Bloom team have organised a "Give and Take" event on March 18th. Bring along those spare seeds or plants and take home something completely different to enhance your garden. We have so many more events lined up for you this year, as we try to raise money for the upkeep and restoration of All Saints.

Please support us to keep All Saints relevant and viable in our village.

Boldshaves Oast

Now covid is mostly behind us we would like Boldshaves to get more involved with the local community and hope to have a plant sale in the spring and, now our field is clear, possibly a boot fayre. We would also like to invite others to attend our bonfire night in November and will let you know dates once they have been agreed.

We are now in a position to allow volunteers to return to help with the garden - so if anyone has green fingers and is at a loose end we would love to hear from you. Please call us on **01233 860039**



Hazel Butcher (1926-2023)

Hazel's memorial service was at All Saints on Monday 20th February.

Hazel was born in Paraguay where her parents Ted and Daisy were missionaries. They retired to live at 'Church Gates' by All Saints East Gate. After WW2, Hazel worked as a teacher in a missionary school in what was then called Uganda. In 1962, with Independence from Empire, Hazel came back to Woodchurch and lived here for the rest of her life.



Daisy had a cherry tree planted in the churchyard behind the house in memory of a friend; the blossom gave us all much pleasure in the spring. Hazel's elder sister Mollie retired around 1988, joining Hazel and their mother here. Hazel worked as a teacher at Brenzett and Wittersham. Daisy lived on until the age of 104.

Mollie and Hazel always lived quietly but used to drive themselves all over France until late in their lives. They also travelled a lot elsewhere in Europe and to Russia. At home, they were loyal members of the Woodchurch Local History Society.

After Mollie died in 2019, Hazel stayed on alone at Church Gates and remained a regular member of the All Saints congregation, eventually for 60 years, and of the Woodchurch Art Club. When her mother's cherry tree passed on, Hazel planted another one in its place; we look forward to enjoying the blossom.

After the service, we were entertained to tea and whatever in the Memorial Hall where we learned more of Hazel's talents including some serious painting.

Thank you, Hazel.

Woodchurch Museum opening and Action Day

Woodchurch Museum opens its doors for the 2023 season on Friday 7th April. To help get ready for the opening we will be holding an "Action Day" on Saturday 11th March from 9:00am at the Museum. Although the maintenance team have been working throughout the winter, we now need to get the exhibition area and grounds ready for the public.



If you can spare an hour or so on the 11th March please come down to the Museum. There will be plenty of jobs to do but if you just want to come along and have a coffee or just see what the Museum is about then you will be welcome.

A BBQ lunch will be provided for helpers on the day.

For more information contact Gina or Joyce through The HUB

Woodchurch HUB AGM

The HUB directors would like to thank everyone who came along to the The HUB AGM on Friday 11th February. We had a good turnout and received some great feedback and ideas from village residents. A big thank you to Gina McKay who agreed to take on the role of HUB secretary.



**WOODCHURCH IN BLOOM**
INCORPORATING
WOODCHURCH GARDENING SOCIETY



GIVE and TAKE

Saturday 18th March 10am - 1pm

outside our Church – look out for WIB Gazebo

Spring is here and we are sorting our gardens out! Do you have plants or seeds to **SPARE** and **SHARE**? Bring them along - See what you can find.

Planting activity for children
including a Mothers Day Gift

Make a date for our 'Planting Out' Day - Saturday 13th May

and inside our Church - Flower and Produce Show

ENGAGEMENT DAY

Saturday 18th March 10am - 1pm

Woodchurch in Bloom are proud to be reviving 136 years of our village heritage by hosting the biennial Flower and Produce Show on

29th July 2023

Would you be willing to help out on the day - it doesn't have to involve a lot of your time - we want everyone to enjoy the event! Please talk to one of the Woodchurch in Bloom volunteers to register your support.

All proceeds will be going to our Church.

Please come along to share your memories of past Flower and Produce Shows. We would love to see any photos you have.

**WOODCHURCH VILLAGE Flower and Produce Show**

Help our village grow healthy and happy - together

Come and join us in making our village even more beautiful
email: woodchurchinbloom@hotmail.com or visit our website: woodchurchinbloom.com



Weekly calendar events sent directly to your email

Did you know that you can have the village calendar events sent directly to your email each week. If you would like to automatically receive the most up-to-date village events please email enquiries@woodchurchhub.uk or contact The HUB.



Gillian's Souper Lunch
Hosted by the WI

CHOICE OF HOMEMADE SOUPS DESSERT,
COFFEE & TEA £8.00

SATURDAY 4 MARCH 2023 IN THE
MEMORIAL HALL
TWO SITTINGS - 12.30 & 13.00

IN AID OF WOODCHURCH SCOUTS GROUP
AND ALL SAINTS CHURCH

TICKETS AVAILABLE FROM THE HUB



B.T.C

Ben Taylor Carpentry & Construction

07585509817

All aspects of carpentry and
construction

- extensions
- porches
- bespoke fitted furniture
- patios
- fencing and landscaping
and much more



B.T.C



b_t_c_construction



07585509817

Remember,
I need
photo ID
to vote

GROUP FITNESS
in Woodchurch

Looking to prioritise your
fitness this year?

Our classes are motivational,
fun and aimed at all abilities.
From beginners to fitness fanatics
- everyone is welcome!

Claim your free taster:
jofurneauxfitness/book-a-class
or call Jo: 07961 978068



JO FURNEAUX
HEALTH + FITNESS COACH

Coffee Morning

In aid of Tommy's, The Baby Charity

On 18th March between 10am – 12pm you
can not only enjoy some amazing
refreshments and good company but also
help us to support a very worthwhile
charity.

We are holding a coffee morning raising
funds to support my daughter Tiffany who
is running the London marathon in aid of
Tommy's the baby charity.

Tiffany has pledged to raise £2,000 for this
worthwhile charity. This coffee morning is
to help her in this goal.

Please come along if you can.

Lynn x



44 Lower Road Woodchurch
Saturday 18th March 10am – 12pm

ENJOYMENT FOR ALL THE FAMILY



We are
reviving 136 years
of our village heritage

Hosted
biennially by

WOODCHURCH IN BLOOM
WOODCHURCH GARDENING SOCIETY

29th July 2023

From 12 midday 'til 6pm on The Green
with show entries in The Memorial Hall

Bring a
picnic to enjoy on
The Green

Vintage
Tea and Cake on
the Lawn

Incorporating
Traditional Country
Crafts and Displays on
The Green

Local Judges -
with Woody judging
Child entries



With 60 categories to choose from
there is something for all the family
and only 30p per entry!

Please pick up a form from
either The HUB, download from
WoodchurchinBloom.com or email
WoodchurchinBloom@hotmail.com

'Connecting Woodchurch'

Upcoming events in our Village

Full details available via the community calendar/ Newsletter

March	April	May	June	July
4th	1st	6th		1st-2nd
WI 'Souper' Lunch for Village Charities	Spring Village Clean-up	Coronation celebrations		Proms Weekend
11th	22nd	(detail tbc)		23rd
Museum Action Day	Concert in All Saints Church	26th-28th		Wings & Things
18th		Art Society Exhibition		Airshow
WIB 'Give & Take' event				29th
				Village Flower & Produce Show

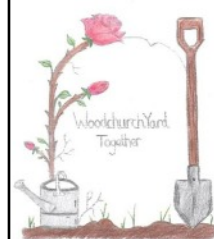
Next 'Connecting Woodchurch' meeting:

Thursday 9th March, 6.30pm in All Saints Church, Woodchurch

WoodchurchYardTogether ("WYT")

Our next volunteer gardening weekend in the
Churchyard is:

25th & 26th
March



Keeping in Touch:

Email:

woodchurchYardTogether@btinternet.com

Or follow us on Facebook



Search: 'WoodchurchYard Together'

Woodchurch Local History Society

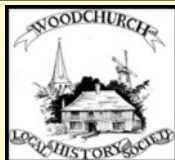
Our society generally meets on the first Monday of the month at 7:30pm in the Memorial Hall. Our evenings normally comprises of an illustrated talk by an experienced speaker which is usually of a local topic. The coming talk in March is on Monday 6th (in the Memorial Hall at 7:30pm) and the speaker is Melanie Gibson-Barton (pictured) whose presentation is entitled 'Elizabeth Barton. Maid of Kent'. In summary, Elizabeth Barton was born in nearby Aldington and she was a young woman / nun during the time of Henry VIII. She became known for her 'visions' and these brought her to the attention of the King. Things were going well until she prophesied the early death of the King should he wed Anne Boleyn. For this unfortunate prophecy she received the ultimate fate beloved of Henry VIII.

Melanie is an excellent and lively local speaker. Visitors are very welcome and pay £3 at the door - there is no need to book.

Members will be familiar with our talks programme for this year. However, this notice provides an opportunity to mention an amended title for our April 3rd presentation. The subject and content remain the same but the additional title of Don Grant's talk is 'Spies, Collaborators and Scandal in 1940'. Don will present some interesting cases investigated by our local village bobbies during WW2 into potential spies, collaborators and German sympathisers. A talk of great local interest. .

At our recent AGM members passed a motion allowing the annual subscription to be raised to £12. This pays for 7 or 8 evening talks and a social evening or two. New members are very welcome so please come and try us out..

We look forward to seeing you in March onwards.
Regards, Geoff 01233 860393.



The Big Thin Red Line

We cannot believe February is over, we would like to thank all those who attended the 70s event, so much effort with costumes and it went down a storm with £1k made in profit for the church.



Presentation to Church Sue and Pat - Dusty Bin raffle - The event

We now look forward to putting St Georges day on the Woodchurch events map, Saturday 22nd April 2023, we will support the Six Bells to hold a medieval St Georges day.

Come dressed as knight or dragon, enter the tournament and enjoy the day with Bands and more, we will display further details over next weeks.



We are asking people to help us at this event we will have a raffle to raise funds for a new Woodchurch Standard (Flag) so we can use it on the 11th November Remembrance parade. If you wish to donate please contact us. We have raised £350.00 but need to raise more, the design above as in the header.

Before we know it, the Kings Coronation will be with us and we would like to make this day inclusive if you are holding street parties, BBQ then let us know please.

We are still looking for members please come and join us.

If you want to assist and join in on anything above, please contact Pat at patrick.byrne@mclarengroup.com

The HUB - Supporting the village

The HUB is a not-for-profit organisation that exists to help support the residents of Woodchurch, the village clubs and societies and also village businesses. Over the past 12 months volunteers have manned the HUB 6 days per week, delivered meals-on-wheels each weekday, provided support for surgery appointments, collecting prescriptions, compiling, printing and delivering the Newsletters each month and fulfilling odd miscellaneous requests for support around the village. **This has delivered a total of more than 1,335 volunteer hours. If this time was valued at the National Minimum wage this would equate to over £12,500.**

If you would like to help support The HUB then please go to www.woodchurchhub.uk and click the the "Donate" button. If you would like to become a HUB volunteer then please pop into The HUB, phone us or drop us an email.

Simple Kent Funerals

Relaxed, flexible, imaginative, economical, caring

Applefield Cottage, Redbrook Street, Woodchurch TN26 3QS

Call Toby on 07806 613297 • www.simplekentfunerals.co.uk

We work in an eco-friendly and environmentally-sustainable way and are certified as a net carbon neutral business

Everything Outside

Bringing New Life
To Your Garden

For A Quick Quote From A Company You Can Trust Call

☎ 01580 766 232 ☎ 07795 465 861

Welcome To Everything Outside

We cover a wide range of services to meet the requirements of our ever-growing client list, if you are looking for a company you can trust to provide a high standard of quality work covering

- ✓ Gardening
- ✓ Garden Design
- ✓ Fencing
- ✓ Clearance
- ✓ Landscaping
- ✓ Hedge Cutting
- ✓ Tree Surgery
- ✓ Digger Work

and much more. Then call our experienced team today on 07795 465 861. To view our full range of services, click on the link below.

Our head office is based in Tenterden, Kent and means we are in the perfect location to proudly service Kent and East Sussex. All our services are tailored to each job we carry out and our team are experience in all aspects of fencing and landscaping services making us your number one choice for all work you require.

Great Work

Great Reputation

Great Price



Design, planning & build services

Now offering full 3d design development for your extension, new build or conversion project. Please call us for an introduction to our design services at our Woodchurch office.

01233 861177 vernacularhomes.com



fab feet

Professional Foot Healthcare

www.fabfeethealthcare.co.uk

**Delivering high quality Podiatric care in the
comfort of your own home**

Providing a reliable and friendly service of professional treatments for all of your foot ailments:

Call Michelle on:

Tel: 01233 731207

Registered & Insured



O
U
R

S
P
O
N
S
O
R
S

Dolmen Conservation & Joinery Ltd Seasoned Logs, ready to burn

Sustainably sourced logs
delivered to your door

Call Jack on **07804 881461**

for prices and delivery - or visit
The Woodland Centre,
Warehorne Road, Woodchurch
(next to the Rare Breeds Centre)

Tenterden Removals

The Professional Removers in the Weald



Secure Storage at a Competitive Price

To help keep the Newsletter free for
the village please become one of our
sponsors or give a donation if you can.

www.woodchurchhub.uk

or Contact The HUB for more information



**Try our professional
Home News
Delivery service**

**New customer introductory
offers available**

Have your paper delivered before you go to work and
read it with your breakfast!

- ✓ Early delivery - before 6.30am (7.30am at weekends)
- ✓ Excellent communication - phone or email ALWAYS responded to
- ✓ Different billing options available
- ✓ All national and local newspapers available to order
- ✓ All magazines available to order
- ✓ Well established reliable company with over 4,400 customers

**Place your order today by telephone on
01580 763183**

or email us at mail@jackiesnews.co.uk
or go to www.jackiesnews.co.uk/place-your-order



CGM Builders Ltd

07944 940 182

EST. Over 35yrs

**Extensions
General Building
Property Maintenance
Brickwork/Stonework Specialist
Landscaping**

Free Estimates



Chris@cgmbuildersltd.co.uk

www.cgmbuildersltd.co.uk

KENT HOLIDAY COTTAGES

+44 (0) 1233 860 293

info@kentholidaycottages.co.uk



AFTERNOON TEA

WOODCHURCH VINEYARD

woodchurchwine.co.uk/events

Available Dates

Mothers Day (19th March)

Easter Sunday (9th April)

You could advertise your company here
from as little as £10 per month

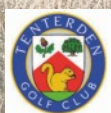
Keen to learn to play golf?
Enjoy a cuppa?

Come along to our
**FREE Ladies Golf Taster Session
& Coffee Morning at
TENTERDEN GOLF CLUB**

Monday 27th March 2023
10.00 - 12.30
meet in the Clubhouse
(golf clubs provided)

Tenterden Golf Club
Woodchurch Road
TN30 7DR
01580 763987

RSVP r.silman@sky.com



WE'RE OPEN:
MON - FRI: 08:00 - 17:30
SAT: 08:00 - 12:30

SO MUCH MORE IN YOUR LOCAL COUNTRY STORE



Of course we sell agricultural parts and machinery.

We also sell outdoor and PPE clothing, alongside hand tools, adhesives, hardware, barn paint and much more...

We're online too: ernestdoeshop.com

Hendon Barn, Woodchurch
Ashford, Kent TN26 3QP
Tel: 01233 224860

 **ernestDOEpower**
Where you buy with confidence

Woodchurch Men's Shed



A group of us are trying to set up a Woodchurch Men's Shed. We started a while ago and we were lucky enough to have a villager who knew the ins and outs of submitting a bid to the National Lottery, this was successful and also thanks to Woodchurch Carnival Committee we quickly raised a good amount of funds. What we thought was the hard part turned out to be the easy bit.

We thought that the easy bit was somewhere to site a workshop. We have plans for the workshop approximately 8 meters by 5 meters (Max shed size) and are looking for somewhere within the village to set up. Ideally the site would be within walking distance for most members. The Shed, whilst not deemed to be permanent, would be an enhancement to wherever it is sited. See proposed choice. (design may vary slightly to make it more user friendly and secure).

We have a written Constitution, a registered name, a bank account, a committee, a small number of members and are ready to go, except for one thing, somewhere to site a shed / workshop. Can anyone help?



Our Constitution states that both male and female members would be welcome. The only real qualification is that members must be over 18 years old. We are currently working with Kents Men's Shed organisation which in turn is associated with UK Men's Shed. A point of interest, Men's Shed started in Australia and is now world - wide.

Our main objectives are to help people learn new skills and also somewhere like-minded people can get together and shoot the breeze. A comment from one shed group was that the most important piece of equipment was the kettle! Other objectives are that, as a group, along with other groups in the village is to help with possible improvements in and around the village. It could be planters, it could be for the church, it could be for the school, there are skills and people who will contribute to the quality of the village. (APART FROM POTHOLES)!!

For anyone who is interested or can help with a site for our shed please contact The HUB or Neil directly...

Email neilmckay0730@gmail.com or phone 07717 861319.



Support your local museum- you could win a £50/£30/£20 prize every month.

Draw numbers for 2022/23 are still available

For more information please contact Joyce via The HUB - enquiries@woodchurchhub.uk or 01233 861381

February 2023 Draw Results

1st prize	£50	Claire Peal	339
2nd prize	£30	Pam Moate	912
3rd prize	£20	Kim Staff	408



Woodchurch Cottage Flowers

We are an artisan florist and flower grower. We grow and sell the most amazing seasonal English flowers. All grown here at our smallholding in Woodchurch in Kent. We are a small flower farm working with nature and the seasons.



Call or text 07969 449235

www.woodchurchcottageflowers.co.uk



The Jean Mealham Centre,
Lower Road, Woodchurch TN26 3SQ

Sunday 5 March 9.00 to 12.00

Refreshments & snacks available. Full breakfast £5.00.



If you're interested in booking a table call
07798 566849 / 01233 860 139