



# WOODCHURCH COMMUNITY NEWS

The village community working together

April 2023

Contact us: Telephone 01233 861381 Email enquiries@woodchurchhub.uk Web www.woodchurchhub.uk

OVER 1,000 COPIES distributed every month in the Woodchurch area

## WOODCHURCH Community Calendar



### Weekly events:

#### Saturdays:

**Boot Camp** 9:00am-10:00am on the Village Green

#### Sundays:

**Outpost Church** 10:00am-12:00pm in the S&G Community Centre, Lower Road

#### Mondays:

**Pilates** 9:00am-10:00am in the Memorial Hall  
**Tai Chi and Qigong** 9:45am and 10:45am at the S&G Community Centre  
**Baby Yoga** 1:00pm-2:15pm in the Memorial Hall  
**Knit and Natter** 2:00pm - 3:30pm in the Pop-In Centre Lodge  
**Line Dancing** 2:30pm - 4:30pm in the Pop-In Centre  
**Junior Tennis Coaching** 3:30pm-7:30pm on the Tennis Courts  
**Beavers** 6:00pm-7:00pm in the S&G Community Centre, Lower Road  
**BodyTone** 6:15pm-7:00pm at the Memorial Hall  
**BodyFlex** 7:15pm-8:00pm at the Memorial Hall  
**Scouts** 7:30pm-9:00pm in the S&G Community Centre, Lower Road

#### Tuesdays:

**Pilates** 9:00am-10:00am, 10:15am-11:15am and 6:00pm-7:00pm in the Memorial Hall  
**Yoga** 10:00am-11:15am in the Pop In Studio  
**Coffee Morning** 10:00am-12:00pm in All Saints Church  
**Little Leaves Forest School** 10:00am - 12:00pm under 5's Play Group based in Woodchurch  
**Winter Warmers** 10:00am-4:00pm at All Saints Church  
**Community Warden** 1:00pm-3:00pm in the HUB  
**Puzzle Club** 2:00pm-4:00pm in the Pop In Lodge  
**Blend Youth Cafe** 3:00pm-5:00pm in All Saints Church  
**Cubs** 5:30pm-7:00pm in the S&G Community Centre, Lower Road

#### Wednesdays:

**Pilates** 9:00am-10:00am in the Memorial Hall  
**Museum Volunteers** 9:30am-12:00pm at the Museum  
**Yoga** 10:00am-11:15am in the Pop In Studio  
**Over 60s Pop-In** 2:00pm-4:00pm Tea and coffee and boot fair marquee at the Jean Mealham Pop-In  
**Rainbows** 5:00pm-6:00pm in the S&G Community Centre, Lower Road  
**Fish and Chips** 4:30pm-7:30pm in the Village Car Park  
**Brownies and Guides** 6:00pm-7:15pm in the S&G Community Centre, Lower Road  
**Morris Dancing Practice** 8:00pm-9:30pm in the S&G Community Centre, Lower Road

#### Thursdays:

**Art Society** 10:00am-1:00pm at the Memorial Hall  
**Margaret Morris Movement** 2:15pm-3:15pm in the S&G Community Centre, Lower Road

Previous editions of the Newsletter can be found on The HUB Web site  
[www.woodchurchhub.UK](http://www.woodchurchhub.UK)



#### Thursdays (cont):

**BodyBlast** 6:30pm-7:20pm at the Memorial Hall Annexe  
**Badminton** 7:00pm-11:00pm at the Memorial Hall  
**Explorers** 7:30pm-9:30pm in the S&G Community Centre

#### Fridays:

**Soup Fridays** 12:00am-2:00pm in the Jean Mealham Centre  
**Adult Tennis Coaching** 5:30pm-6:30pm on the Tennis Courts

#### Other Events:

Sat 1<sup>st</sup> **Spring Village Clean Up** - From 8am at The HUB  
Sun 2<sup>nd</sup> **Music at The Bonny - Crooked Style** - 7:00pm  
**Mon 3<sup>rd</sup> to Friday 14<sup>th</sup> ROAD CLOSED Shadoxhurst Road** from Coldblow to Hengherst Farm  
Mon 3<sup>rd</sup> **CARM** 10:30am to 12:30pm in the Memorial Hall  
**WLHS** - Wartime Agents and Spies. 7:30pm in the Memorial Hall  
Tues 4<sup>th</sup> **Bonny Cravat Quiz Night** - 7:00pm  
Wed 5<sup>th</sup> **Six Bells Quiz Night** - 7:00pm  
**Tenebrae Service** 7:00pm at All Saints Church  
Thu 6<sup>th</sup> **Last Supper Eucharist and Foot Washing** 7:00pm at All Saints Church  
Fri 7<sup>th</sup> **WOODCHURCH Museum 2023 Opening** 10:00am  
**Good Friday Walk** - Outpost Church 2:20pm from the S&G Community Centre  
**Storytime and Crafts for families** - 4:00pm-5:00pm at All Saints Church  
**Music at The Bonny - Groove 101** - 7:00pm  
Sat 8<sup>th</sup> **Easter Egg Hunt** - 2:00-3:00 at All Saints Church  
**Vigil Service** - 8:00pm-9:00pm at All Saints Church  
Sun 9<sup>th</sup> **Easter Service and Easter Egg Hunt** - Outpost Church 10:30am-11:45am at the S&G Community Centre  
Mon 10<sup>th</sup> **Six Bells Park Easter Celebration** - 2:00pm at Six Bells Park  
**Tue 11<sup>th</sup> to Wed 12<sup>th</sup> ROAD CLOSED Top of Front Road**  
Tue 11<sup>th</sup> **WI "What Women Wore"** 7:15pm at the Memorial Hall  
Wed 12<sup>th</sup> **Borough Councillors Surgery** - 11:00am-12:00pm at Woodchurch HUB  
Sat 15<sup>th</sup> and Sunday 16<sup>th</sup> **WYT Churchyard tidy up weekend** at All Saints Church  
Sun 16<sup>th</sup> **Morning Worship** - 11:00am at All Saints Church  
**Mon 17<sup>th</sup> to Fri 21<sup>st</sup> ROAD CLOSED May Shaves**  
Tue 18<sup>th</sup> **A Musical Afternoon Tea Party** - 2:30pm-5:00pm at the Jean Mealham Centre  
Fri 21<sup>st</sup> **Music at The Bonny - HEROES** - 7:00pm  
Sat 22<sup>nd</sup> **shford Youth Orchestra Concert** - 7:00pm at All Saints Church  
**St Georges Day event and Music from Zips Duo** - 7:00pm at The Six Bells  
**Thu 27<sup>th</sup> to Tue 2<sup>nd</sup> May ROAD CLOSED Top of Front Road**  
**Parish Council Meeting** 7:00pm in the Memorial Hall Annexe  
Fri 28<sup>th</sup> **Ashford Astronomical Society** - 7:00pm in the Memorial Hall



# WOODCHURCH PARISH COUNCIL • *UPDATE* •

## Woodchurch Windmill

At an EGM called on the 27<sup>th</sup> March the Parish Council voted to form a working group to enable them to talk directly with Ashford Borough Council regarding the future of the Mill. It was good to see a number of local residents at the meeting and the Parish Council welcomed their views and support. The working group will be established to also include village residents who are not serving members of the Parish Council. More information will be available at the April meeting.

## Local Elections - 4<sup>th</sup> May

Do not forget that the local elections for your Borough Council and Parish Council on this day. If you are considering becoming a Parish Councillor then do not forget to complete the nomination form and have it returned in person to the Ashford Civic Centre, Tannery Lane before 4pm on Tuesday the 4<sup>th</sup> April 2023. Nomination forms can be downloaded from the [HUB web site](#), the [Electoral Commission Web site](#) or printed copies are available at The HUB.

If you are putting yourself forward as a Parish Council candidate, and there are sufficient nominees to require an election, if you have produced any promotional literature the HUB will deliver them for you free of charge along with the May Newsletter. The HUB will also be preparing a candidate profile sheet for inclusion in the May Newsletter. Please contact The HUB if you would like to have your details included.

## DO NOT FORGET - From 4 May 2023, voters in England will need to show photo ID to vote at polling stations in some elections.

This will apply to:

- Local elections
- Police and Crime Commissioner elections
- UK parliamentary by-elections
- Recall petitions
- From October 2023 it will also apply to UK General elections.



[www.electoralcommission.org.uk/i-am-a/voter/voter-id](http://www.electoralcommission.org.uk/i-am-a/voter/voter-id)

The most common forms of acceptable photo ID are:

- Passport
- Driving licence
- A Blue Badge
- Older Person's Bus Pass

For a full list of acceptable photo ID please visit the Web site above, or contact The HUB.

If you don't have accepted photo ID, you can apply for a free voter ID document, which is known as a Voter Authority Certificate. You can apply before the 25<sup>th</sup> April either online (see link above) or by post. Printed application forms are also available at the Hub or can be downloaded from [The HUB Web site](#).

## How to contact your Parish Council

**In person:** By talking to one of your councillors - details on the Parish Council Web site

**By email:** [clerk@woodchurch-pc.gov.uk](mailto:clerk@woodchurch-pc.gov.uk)

**By phone:** 01233 861381

**Through The HUB:** Place your correspondence in a sealed envelope marked "Parish Council" and deliver to The HUB

**By post to:** Woodchurch Parish Clerk, c/o Woodchurch HUB, Front Road, Woodchurch, Kent, TN26 2PA

**Through the contact form on the Parish Council Web site:** [www.woodchurchhub.uk/parish-council/](http://www.woodchurchhub.uk/parish-council/)

## Parish Council meetings

The next Parish Council meeting will be held on

**Thursday 27<sup>th</sup> April**

**7:00pm in the Memorial Hall Annexe**

**EXPECT MAJOR DISRUPTION AS A RESULT OF ROADWORKS IN AND AROUND THE VILLAGE THROUGHOUT APRIL AND THE BEGINNING OF MAY**

**DETAILS BELOW**

## Upcoming roadworks in and around Woodchurch

Information from KCC and one.network

### **Road Closed - Shadoxhurst Road Between Coldblow Lane and Hengherst Farm**

**3<sup>rd</sup> - 14<sup>th</sup> April 2023**

Closure in force: Road Closed

Description: KCC Strengthening of carriageway

### **Road Closed - top of Front Road**

**11<sup>th</sup> - 12<sup>th</sup> April 2023**

Closure in force: Road Closed

Description: KCC pre-patching works for surfacing

### **Road Closed - May Shaves**

**17<sup>th</sup> April - 21<sup>st</sup> April 2023**

Closure in force: Road Closed

Description: KCC carry out RETREAD surfacing works to the carriageway

### **Road Closed - top of Front Road**

**27<sup>th</sup> April - 2<sup>nd</sup> May 2023**

Closure in force: Road Closed

Description: KCC Micro Surfacing Programme



**How to report highway problems including potholes, streetlights and broken signs**

**[www.kent.gov.uk/highways](http://www.kent.gov.uk/highways)**



I was very concerned to receive the crime report today which showed two incidents in the area.

FRONT ROAD and LOWER ROAD WOODCHURCH.

Burglaries have been very low in East Kent and reading this report we all need to accept that criminals are active in the area and we must all raise our awareness and vigilance especially ensuring we are secure as possible at all times even if we are popping out for a few moments.

If there are any further witnesses, information, CCTV, Camera Doorbell footage or even by total chance DASHCAM footage especially if the vehicle camera films when the vehicle is parked and locked then please contact the police and quote the crime numbers shown.

Thank you for your assistance

Peter

**Peter New ( peternew1@aol.com )  
91725 Kent Police Volunteer & Community  
Neighbourhood Watch**



East Kent Neighbourhood Watch Messaging Team Report							
Crime Reference	Ward	Location	Offence	Date from	Date to	Property stolen	Misc.
46/49413/23	Furley	Simone Weil Avenue area of Ashford	Theft from motor vehicle	14/03/23 0001 hours	14/03/23 1851 hours	Miscellaneous food groceries and <u>two wheel nuts</u> stolen	
46/49928/23	Singleton East	Honey Field area of Ashford	Attempt Burglary	14/03/23 2302 hours	14/03/23 2325 hours	Rear door damaged, no entry gained	Attempt
46/50431/23	Weald South	Front Road area of Woodchurch	Burglary	17/03/23 1900 hours	18/03/23 1130 hours	Entry gained, nothing stolen	
46/50712/23	Weald South	Lower Road area of Woodchurch	Burglary	19/03/23 1100 hours	19/03/23 1530 hours	Entry gained, untidy search, 2 watches, jewellery and a TV cable stolen	

Woodchurch does not currently have an active registered Neighbourhood Watch scheme and we will be working with Peter to try to reestablish one in the village. As with all community schemes, Neighbourhood Watch is dependent on local volunteers to set up and manage. If you are willing to lead the Community Neighbourhood Watch group for Woodchurch then please contact The HUB. More information regarding what is involved can be found at [www.ourwatch.org.uk](http://www.ourwatch.org.uk)



## CALLING EVERYONE

CAN YOU ACT, SING, DANCE OR  
DO ALL THREE?

DATE - TBA

COME ALONG TO ONE OF THE AUDITION EVENINGS FOR  
OUR SEPTEMBER PRODUCTION - ALL AGES WELCOME

Do you have a favourite musical song you would love to perform or  
would just like to join into a fun sketch or song & dance routine?

Come with your own audition piece or join in with one of the group numbers.



WE ARE PLANNING A FUN FAMILY EVENING OF  
ENTERTAINMENT WITH SHORT SKETCHES AND THE  
BEST OF EVERYONE'S FAVORITE MUSICALS.

Performances will be Friday and Saturday September 2023 and tickets will  
include a jacket potato and the chance to sing along.



It will be **WICKED** see there.

IF YOU ARE INTERESTED IN JUST HELPING BACK STAGE, PROPS, FRONT  
OF HOUSE OR WITH THE REFRESHMENTS PLEASE LET US KNOW

Ann and Lynn

**Helping save and preserve our Church**

## ASHFORD YOUTH JAZZ ORCHESTRA IN CONCERT

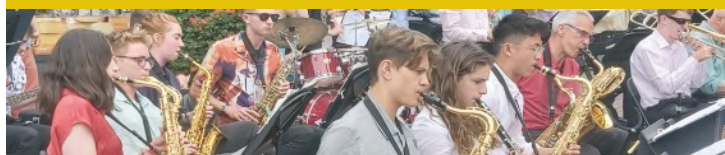
at **ALL SAINTS  
CHURCH**  
WOODCHURCH

*A lively mix  
of Traditional, Swing,  
Contemporary and  
Modern Jazz*

**Saturday, 22nd April 2023**

Doors open 7pm Concert starts at 7.30pm

**LICENSED BAR and Raffle**



**Tickets £10** (includes light refreshment) Online from:  
<https://www.ticketsource.co.uk/all-saints-woodchurch>

or if you prefer - visit **WOODCHURCH HUB** 01233 861381  
(Open Monday-Friday 10.00am-1.00pm Saturday 10.00am-12 midday)

## **Darran Bugden - Our village postman retires after 36 years of service to Woodchurch**

Darran joined Royal Mail in May 1987 at the age of 16 to replace a part-time postman who unfortunately passed away. He had been working for about 4 weeks when he received a letter from Royal Mail saying that unfortunately he hadn't got the job!! An admin error, soon corrected.

A great deal of his career was spent on a bicycle, loaded so high, he could only just see over the top (yellow pages & phone books). Most days his round consisted of a 33-mile journey coming back to the Post Office to reload and set off again, regardless of the weather.

He became the full-time postman on the retirement of Michael Garman in the early 90's when he had a wife and young family to provide for.

He has many interesting tales, as you would expect during his long service, some of which can't be repeated but the village will remember him as a constant, reliable figure in their lives



providing a good service, a smile and the occasional hug when needed. He has had many older customers who he would help with small day to day tasks, like reading letters for those with sight problems, dropping off prescriptions at the surgery as he was going by, fetching stamps and just generally keeping an eye on their welfare. And, of course, full knowledge of the dogs in the village, good and bad. 'I've found this dog! Who does it belong to?'

He has really enjoyed his long career with Royal Mail, but since the closure of the Post Office which meant the closure of the sorting office behind it, the move into Ashford has thrown new challenges his way. He has gained new friends/colleagues with the move but, with the current changes that

Royal Mail intend to make, he feels that he has had the best from Royal Mail and that it is time to move on.

His has had a long and happy career which has been exemplary, and he can look back at that time with pride and affection. He will, of course, miss his customers and their pets (maybe not the bitey ones!)

**Darran - A big thank you from the village. Retired from the post office maybe... but we are sure that you will remain a familiar, friendly face around the village.**



### **The Six Bells Inn**

March has Marched off and April is here (hopefully with not too many April Showers) especially as we have a full month of activities ahead.



Be careful too, its April Fools

Day on a Saturday so anything could happen!! We have our Quiz Night on Wednesday 5th April which always proves to be a popular evening and then its Easter Weekend. Good Friday we have the Trio Troubadour here in the evening and then we have some other surprises in store for the remainder of the Easter Holiday.

St Georges Day 22 April and we are celebrating with music including Zips Duo who will be performing in the evening

And finally.... The lawn is all laid and growing nicely so we can't wait to invite you out into the garden sometime soon and with the busy month of May and the Coronation Weekend nearly upon us, we plan on making full use of the outside area and we are absolutely, positively sure that the sun will be shining so we can all celebrate in style.

With love as always - Emily and Co. xx

### **Bonny Cravat**

What an EXCITING month April is going to be at the Bonny! Lighter evenings, warmer days and lots more fun to be had!



Live music nights have proved to be very popular lately, with a great turn out and night had by all for the amazing Men Without Hens in March. Live music will be returning not once, not twice...but THREE TIMES in April!

We have Crooked Style from 3pm on Sunday 2nd April, followed by a bit of funk and soul from the wonderful Groove 101 on Friday 7th. AND if that isn't enough for you...we have HEROES live on Friday 21st, so put on your dancing shoes and get ready for an awesome April!

Quiz night will be on Tuesday 4th April and it's a roll over! This month the winning team could walk away with over £100.00!!! Don't miss out, book your team in soon as there is limited space!

Once again, thank you to everyone for your continued support. We have had such lovely feedback and some really great times with you all already.... long may it continue!



## WOODCHURCH SURGERY *UPDATE*

At close of play on Monday, I gathered with Drs Smith and Arinaitwe and we shared a cheer at the sun streaming through the windows. Collectively we enjoyed the moment that felt as if the winter is now behind us. I drove home into a lovely sunset for the first time this year.

Sunlight helps increase levels of serotonin (your happy hormone) and just 30 minutes exposure is said to increase your serotonin to good levels and also increase your vitamin D to protect your bones from osteoporosis. I definitely felt the hit on Monday evening!

Sunlight is thought to be protective from some cancers, is thought to help people sleep better by restoring the "circadian rhythm" and also helps with skin conditions, such as psoriasis. Excessive exposure has strong links with skin cancer so it is best to avoid the peak UV times between 10am and 4pm.

With this burst of warmth we will get the pollens rising. The seasonal hayfever sufferers should start their anti-histamines and nasal steroid sprays. Cetirizine is probably the best long-acting anti-histamine and is readily available over the counter. Nasal sprays should be steroid based and used regularly. The "decongestant" sprays such as Sudafed and Otrivine are brilliant for short term relief, but if used for more than a week cause increased swelling inside your nose and will lead to long term issues.

April is the start of a new year for the NHS so for the last few weeks we have been very busy trying to tidy up our registers and ensure that we meet nationally set targets. This year has seen the first time that some of these targets must be jointly met among the PCN (Primary Care Network - Hamstreet, Charing, Ivy Court and us). We have been working together for some time now but this formal mandate has led to more collaborative working and really sets the tone for the future of GP world.

April also celebrates Easter and with it comes vast amounts of chocolate. Chocolate has lots of flavanols that can lower blood pressure, protect your heart, liver and brain. It also makes people very happy but excessive consumption can lead to needing bigger clothes too... Our Nurse Practitioner, Chris Hamilton, also told me that if a diabetic is having a hypoglycaemic episode that Jelly Babies are much better than chocolate, as chocolate is much fattier so takes much longer to absorb - tip for the day to save a life!



Wishing you a very happy Easter and New NHS Year to you all on behalf of the Surgery

Best wishes, Jack Hickey, GP



### Junior Coaching Programmes at Woodchurch Bethersden & Hamstreet

**All year round**

**SERVE**  
**RALLY**  
**VOLLEY**  
**SMASH**

**Coordination**  
**Movement**  
**Balance**

**Trial Sessions available**

**ADULT COACHING AVAILABLE**

For more information Call: - L.T.A Licensed Coach Sam  
Carlton 01233 820175 / samcarlton777@gmail.com

### Surgery Opening Hours

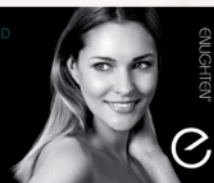
Monday to Friday 9am to 5pm



**Hamstreet  
Dental Clinic**

Welcomes You

ENLIGHTEN ACCREDITED  
PROFESSIONAL TEETH  
WHITENING CENTRE



ENLIGHTEN

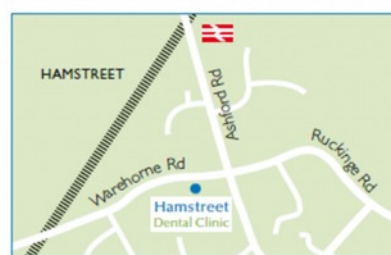


### Where to find us...

Hamstreet Dental Clinic  
Warehorne Road  
Hamstreet  
Kent TN26 2JJ



Find us on facebook



**Tel: 01233 733848**

Email: hamstreetdentalclinic@gmail.com

# All Saints Church



Dear Friends,

I hope you are all keeping well, and enjoying some nice Spring weather as Easter approaches -there has not been much sunshine to enjoy, as I write this towards the end of March.



I can hardly believe that this is our third Easter in the Benefice! This year I have tried to offer a range of different ways to experience Holy Week, with services moving from one village to another each day, starting on Palm Sunday 2nd April in High Halden, when we will begin on the Village Green with Eeyore and Joey the donkeys. In the Palm Sunday service we remember Jesus' triumphal entry into Jerusalem. We are blessed to have had a group of talented people in High Halden who have made a new altar frontal and beautiful kneelers for the church, and I am looking forward to blessing them and seeing them all in situ for this service.

We have lots of services and events in Woodchurch for Holy Week and Easter. You can find all the details in this newsletter. For families we have story time and crafts in church at 4pm on Good Friday 7th April we have an easter egg hunt in All Saints churchyard at 2pm on Saturday 8th April (this was very popular last year).

We have several different reflective evening services during Holy Week, then we celebrate Easter - with a vigil service on Saturday evening 8th April at All Saints where we will light the Easter candle from a fire outside; this will be followed by a short candle-lit service in the church. On Easter Day we have a dawn service in High Halden, and then a Benefice communion service in Bethersden. This is the most important time of the year for us as Christians - we celebrate that Christ conquered death and is present in our lives today. Do pop in and try at least one service if you have not been to church for a while, or even if you have never been before - everyone is welcome, and it has been great to see some new faces at our recent services.

Next month we have something planned at each church for Coronation Weekend, - in Woodchurch we will be re-introducing an 8am BCP (Old traditional language prayer book) Communion service on 7th May. We are also supporting the "Big Help" day when we celebrate the work of all our volunteers, and encourage others to help - I am looking forward to welcoming other volunteer organisations and visitors to the church on the Bank Holiday Monday, 8th May.

Easter Blessings to everyone,  
[01233 820266](tel:01233820266). [revsuerose@outlook.com](mailto:revsuerose@outlook.com)

## 2023 PARISH MAGAZINE SUBSCRIPTIONS

If you would like to continue to subscribe to the **Woodchurch, Bethersden and High Halden Parish Magazine** then please ensure that you have paid your subscription. Subscription reminders will be attached to the April edition - or contact The HUB for a subscription form.

## Holy Week and Easter Services

Our services have been planned this year to give a full experience of Holy Week, as we walk beside Jesus in his final days, and then turn to celebration of His resurrection at Easter. The different services are explained here, so you know what to expect; they are spread across our villages, but intended that you can follow them from one church to another during the week.

### **Palm Sunday 2nd April**

#### **11am in High Halden**

We begin on the village green with the Palm Gospel and procession when we remember Jesus riding triumphantly into Jerusalem. We will be blessing a new altar frontal and kneelers made by local people. We will then listen to the full story of Jesus' final days during our service in church.

#### **4pm in High Halden**

Storytime for families as we hear about Jesus' final journey with a craft activity followed by drinks and cake

### **Monday 3rd April 7pm High Halden**

A compline service of night prayer - a short and peaceful service

### **Tuesday 4th April 7pm Bethersden**

Stations of the cross - we remember Jesus' final journey with pictures and prayers around the church

### **Wednesday 5th April 7pm Woodchurch**

Tenebrae service - quiet and reflective readings as candles are gradually extinguished

### **Thursday 6th April 7pm Woodchurch**

Last Supper Eucharist with Foot Washing - we remember the night before Jesus died.

### **Good Friday 7th April**

#### **12 noon at Bethersden**

Good Friday Liturgy - a solemn service to commemorate the day Jesus died for us.

#### **4pm in Woodchurch**

Storytime for families as we hear about Jesus' final journey with a craft activity followed by drinks and cake

### **Holy Saturday 8th April**

#### **2pm in Woodchurch and Bethersden**

Easter Egg Hunts in the churchyards in Bethersden and Woodchurch

#### **8pm in Woodchurch**

Easter Vigil - prayers followed by the lighting of the Easter Candle

### **Easter Day Sunday 9th April**

**6am in High Halden** - dawn service with lighting of the Easter Candle

**11am in Bethersden** - Benefice Eucharist celebration for Easter

**2pm in High Halden** - Easter Egg hunt for families



March started for Woodchurch WI on the first Saturday of the month when we hosted "Gillian's Souper Lunch" at the Memorial Hall.



At that time winter appeared to be very reluctant to relinquish its grasp on this part of Kent, with a brisk and extremely chilly north easterly wind blowing across the county. Of course this meant that a tasty, warming lunch of soup, rustic bread, dessert and tea or coffee was just the ticket and so, yet again, this event proved very popular - so much so that Gillian was able to donate £225 to each of this year's selected village groups - namely the Church and the Scouts. Thank you to everyone who put so much effort into making the event such a success, and a special thank you must go to Wade Nash for providing us with so many excellent varieties of home made soup!



Our actual meeting in mid March was a convivial affair as we celebrated our 96th birthday in style with a talk entitled "Woodchurch in the 1920s" delivered with panache by member Josie Mackie. Josie was born and bred in the village, as were her parents and grand parents before her. She explained that the first WI meeting was recorded as having taken place on 12th January 1927, but the birthday has always been celebrated in

March. The first founding President was a lady called Maude Marchant. Most of the first members were then what Maude referred to as "working class" and they came to be educated rather than entertained. It was a time of rural poverty, as Woodchurch, like so many other villages, was slowly beginning to recover from the First World War. The homes had no gas, electricity or telephone and an outside lavatory was the norm. The roads, being unmade, were very dusty in the summer and in the winter, it was mud and more mud! A school had existed in the village for over 75 years and there was a small private school held in Church Gates Cottage (where, until recently, the Misses Butcher lived). The Schrieber family, or by 1927, the daughter Evelyn Webb, owned the Hengherst Estate. There was a Doctor and a District Nurse, but as this was pre 1948, there was no NHS, so all visits and medication had to be paid for. Many of the men were farmers or agricultural workers, whilst others worked for Bournes the Builders. The village was blessed with more shops than today (there was even a department store called Belmont Stores on the site of Woodchurch Garage) and so many villagers were shop workers - butchers, bakers, confectioners and grocers, and most people would have done their general shopping locally. And, of course, the village had 3 pubs - the Six Bells and Bonny Cravat and the Stonebridge Inn. Following our brief visit to Woodchurch's past, we were able to enjoy various nibbles, chocolates, wine and a choice of delicious Lemon Sponge or Coffee & Walnut cake and we are now looking forward in anticipation to next year's celebrations! The competition (Something Yellow) was won by Barbara's wonderful Spring knitting display. Our next scheduled meeting will be on Tuesday, 11th April at 7.15 pm in the Memorial Hall when Sheila Farmer will be our speaker on "What Women Wore" and the competition will be "Something Green". Do join us if you can! Visitors will always receive a warm WI welcome!

### GILLIAN'S SOUPER LUNCH

I would also like to thank the following for their contribution:-

Post Office Coffee Shop	}
Carley Butchers	}
Six Bells Pub	}
The Bonny Cravat	}
Richard Carley	Supply of Vegetables
Wade Nash	Making of Soups
Woodchurch WI	Hall hire and heating

I would also like to give my thanks and appreciation to my fellow WI members who not only worked very hard in the kitchen and serving but stood in on my behalf as I was not able to attend due to Covid. - Gillian

### Music to my ears

Before Christmas I was in New York and my youngest daughter had asked me to bring her back a poster of the Broadway production of 'The Music Man' starring Hugh Jackman. If you know the story of this musical it is about a man who introduces music into a community in the form of a marching band. Secretly he has ulterior motives to sell the towns folk uniforms and musical instruments, and then skip off with the money. He meets lots of opposition to the whole idea (and some people see through him) but in the end he delivers and it brings the town together, all accompanied by some resounding songs - 'Seventy-six Trombones' anyone?

Luckily you don't have to battle your way to the theatre to hear the sound of brass bringing local people together. On 22nd April we are delighted to welcome the Ashford Youth Jazz Orchestra to All Saints, Woodchurch at 7.30 (see posters around the village and in this newsletter for ticket information). Come along and why not bring a friend? Not only will you be enjoying a night out but you will also be raising funds for your village church, which is sorely in need of your help.

We can promise you a highly enjoyable evening, we can promise you the thrill of a live orchestra, we can promise you an evening to remember - however, we can't promise you Hugh Jackman! (I think his diary was full).

Karen -

OUTPOST CHURCH INVITES YOU TO OUR...

# EASTER SERVICE



**WHEN?** April 9th, 10.30am - 11.45am

**WHERE?** Outpost Church meets at the Woodchurch Scout & Guide Community Centre, Lower Road, Woodchurch, TN26 3SQ

**WHY?** Songs, prayer, thought provoking Easter message, children's craft, hot cross buns, coffee & tea, & Easter egg hunt!



[outpostchurch@live.co.uk](mailto:outpostchurch@live.co.uk) [www.outpostchurch.co.uk](http://www.outpostchurch.co.uk)

OUTPOST CHURCH INVITES YOU TO OUR...

# GOOD FRIDAY WALK

We will be meeting on Good Friday (April 7th) at the Woodchurch Scout & Guide Community Centre\* at 2.20pm to start the walk at 2.30pm. The walk should be about an hour long.



We will return to the hall for about 3.30pm for teas/coffees/drinks and hot cross buns. There will also be some craft activities for the children. If you want to miss the walk and just join us at 3.30pm then please feel free, we'd love to see you!

## HOT CROSS BUNS / DRINKS / CRAFT

\* The Woodchurch Scout & Guide Community Centre, Lower Road, Woodchurch, TN26 3SQ

[outpostchurch@live.co.uk](mailto:outpostchurch@live.co.uk) [www.outpostchurch.co.uk](http://www.outpostchurch.co.uk)

**Hear Ye Hear Ye,  
Come all to join us for a Medieval  
St. George's Day celebration on  
22nd April!**



Much merriment will take place with music, Morris men, and plenty of medieval madness.

Come dressed in your best medieval attire or as a peasant and enjoy the festivities. There will be plenty of food and Ale to enjoy for silver and gold coinage.

A Medieval Tourney with swords, archery, and mace will take place, show off your house colours. A friendly tournament for all levels of knights. Whether you are a beginner or a seasoned veteran, come join us for a fun and safe fight for honour - We will provide all the necessary equipment and safety gear to ensure everyone has a great time. So come join us and prove you are the top knight!

The Big Thin Red line will also be raffling off some great prizes to raise funds for the standard we are trying to purchase for Remembrance Day, please support, enjoy and let's make it a great day.

Looking forward to coronation day we hope we all team up with the pubs to join throughout the day and later that evening the PC are looking at a prestigious marking of the event with lighting the beacon on the green. Further information to be given as we form the plans, if you are holding any local street parties please let us know?

[Patrick7171@myyahoo.com](mailto:Patrick7171@myyahoo.com)

## WOODCHURCH CARNIVAL

We are so pleased that after the success of the 2022 Woodchurch Carnival, we can start looking at 2024 Carnival.

We are keen to have a meeting the week of 12th June location to be confirmed, if anyone would like to assist attend this meeting, we will be grateful. We are also very aware that we need the younger members of the village to be involved and would love to form a junior committee.

The provisional date for the 2024 Carnival is 22nd June 2024, let's make it bigger and better together. If you wish to share ideas or get more involved prior please contact Via [Patrick7171@myyahoo.com](mailto:Patrick7171@myyahoo.com)

### Woodchurch Together

Over the past few meetings of Woodchurch together an idea has been hatched to purchase a cart? This will be used to advertise events and clubs through leaflets, the cart will be used as a mobile communication tool. It will be available for clubs to put literature on to promote themselves or events and this will be displayed in various locations around the village and at other events for people to access the information.



We have sourced a cart and if all clubs and organisations gave £5.00, we can purchase it for use, several clubs have already pledged money so we have around £50.00 towards the target. If club, organisation, or anyone else, would like to donate please can you contact Patrick Byrne via email [patrick7171@myyahoo.com](mailto:patrick7171@myyahoo.com)





# B.T.C

Ben Taylor Carpentry & Construction

07585509817

## All aspects of carpentry and construction

- extensions
- porches
- bespoke fitted furniture
- patios
- fencing and landscaping and much more



B.T.C



b\_t\_c\_construction



07585509817



## WEALDEN FESTIVAL

### 24-25 June 2023

## 2023 Spring Village Clean Up Saturday 1<sup>st</sup> April

Please come and join us on Saturday 1<sup>st</sup> April to participate in our Spring Village Clean Up.



Bags, high viz jackets and litter pickers will be available - but if you have your own then please bring them along. See you outside The HUB from 8am.

## Woodchurch Village Life Museum

- Opens for the season at the weekends and on bank holidays from Friday 7th April, 10am to 4pm.
- Only a short walk from the Green, down Susan's Hill.
- Free admission, bring family and friends to this unique gallery of local artefacts.
- Children can enrol in the 'Wheels of Time' scheme and collect a badge.
- New exhibition with a 1/18th scale model of Woodchurch Windmill.
- Find out about the model's story and the many more amazing facts about the characters and places where you live.



**SEE YOU THERE**

## Woodchurch Morris Men

The Woodchurch Morris Men continue to practice on Wednesday evenings, 8 pm, at the Scout Hall followed by a refreshing ale afterwards at the Bells. New members are always welcome. The Morris Men's exciting summer programme will soon be published, so watch this space. In the interim, come along and have a great time with the Morris, who will soon be dancing out on:

- o Saturday 6th April: The Six Bells, St Georges Day (around 12:30 onwards);
- o Monday 1st May: The Green car park, Mayday morning at 8 am (yes, 8 am);
- o Saturday 6th May: The Kings Coronation celebration, The Six Bells (time tba);
- o Monday 8th May: The Kings Coronation celebration, The Kings Head, Shadoxhurst, 3-4 pm.



## **WOODCHURCH IN BLOOM** WOODCHURCH GARDENING SOCIETY

### Summer planting Saturday 13 May

Please meet at 10am outside the Church

It's that time of year to plant up the village for the summer!  
Could you help us plant up around the Village?  
If so, please meet us from 10 am outside the Church where the plants will be assembled.

This Coronation year, the aim is to make our village even more colourful and vibrant, full of beautiful blooms.

We are also celebrating the revival of the Woodchurch Flower and Produce show, returning on Saturday 29<sup>th</sup> July.



On Saturday 13 May, it's also the Churchyard Volunteer Weekend ("WYT"), so come and see what is happening there too.



Jobs for everyone and of course refreshments inside the church!  
Making our village even more beautiful TOGETHER

Bring a picnic to enjoy on The Green

Tea and Cakes on the Lawn

## WOODCHURCH VILLAGE Flower and Produce Show

We are reviving 136 years of our village heritage

### 29<sup>th</sup> July 2023

From 12 midday 'til 6pm on The Green with show entries in The Memorial Hall  
Incorporating Traditional Country Crafts and Displays on The Green  
With 60 categories to choose from and only 30p per entry!  
Please pick up a Entry Form from either The HUB, download from WoodchurchinBloom.com or email WoodchurchinBloom@hotmail.com

## WoodchurchYardTogether ("WYT")

Our next volunteer gardening weekend in the Churchyard is:

# 15<sup>th</sup> & 16<sup>th</sup> April



Keeping in Touch:

Email:

woodchurchYardTogether@btinternet.com

Or follow us on Facebook



Search: 'WoodchurchYard Together'



# Everything Outside

Bringing New Life  
To Your Garden

For A Quick Quote From A Company You Can Trust Call

☎ 01580 766 232 ☎ 07795 465 861

## Welcome To Everything Outside

We cover a wide range of services to meet the requirements of our ever-growing client list, if you are looking for a company you can trust to provide a high standard of quality work covering

- ✓ Gardening
- ✓ Garden Design
- ✓ Fencing
- ✓ Clearance
- ✓ Landscaping
- ✓ Hedge Cutting
- ✓ Tree Surgery
- ✓ Digger Work

and much more. Then call our experienced team today on 07795 465 861. To view our full range of services, click on the link below.

Our head office is based in Tenterden, Kent and means we are in the perfect location to proudly service Kent and East Sussex. All our services are tailored to each job we carry out and our team are experience in all aspects of fencing and landscaping services making us your number one choice for all work you require.

Great Work

Great Reputation

Great Price



### Design, planning & build services

Now offering full 3d design development for your extension, new build or conversion project. Please call us for an introduction to our design services at our Woodchurch office.

01233 861177 [vernacularhomes.com](http://vernacularhomes.com)



## fab feet Professional Foot Healthcare

[www.fabfeethealthcare.co.uk](http://www.fabfeethealthcare.co.uk)

**Delivering high quality Podiatric care in the  
comfort of your own home**

Providing a reliable and friendly service of professional treatments for all of your foot ailments:

Call Michelle on:

**Tel: 01233 731207**

Registered & Insured



O  
U  
R  
  
S  
P  
O  
N  
S  
O  
R  
S

## Dolmen Conservation & Joinery Ltd Seasoned Logs, ready to burn

Sustainably sourced logs  
delivered to your door

Call Jack on **07804 881461**

for prices and delivery - or visit  
The Woodland Centre,  
Warehorne Road, Woodchurch  
(next to the Rare Breeds Centre)

## Tenterden Removals

The Professional Removers in the Weald



Secure Storage at a Competitive Price

To help keep the Newsletter free for  
the village please become one of our  
sponsors or give a donation if you can.

[www.woodchurchhub.uk](http://www.woodchurchhub.uk)

or Contact The HUB for more information



**Try our professional  
Home News  
Delivery service**

**New customer introductory  
offers available**

Have your paper delivered before you go to work and  
read it with your breakfast!

- ✓ Early delivery - before 6.30am (7.30am at weekends)
- ✓ Excellent communication - phone or email ALWAYS responded to
- ✓ Different billing options available
- ✓ All national and local newspapers available to order
- ✓ All magazines available to order
- ✓ Well established reliable company with over 4,400 customers

**Place your order today by telephone on  
01580 763183**

or email us at [mail@jackiesnews.co.uk](mailto:mail@jackiesnews.co.uk)  
or go to [www.jackiesnews.co.uk/place-your-order](http://www.jackiesnews.co.uk/place-your-order)





EST. Over 35yrs

**Extensions  
General Building  
Property Maintenance  
Brickwork/Stonework Specialist  
Landscaping**

Free Estimates

Chris@cgmbuildersltd.co.uk

[www.cgmbuildersltd.co.uk](http://www.cgmbuildersltd.co.uk)

**KENT**   
**HOLIDAY COTTAGES**

+44 (0) 1233 860 293

info@kentholidaycottages.co.uk



You could advertise your company here  
from as little as £10 per month

## D K Plastering Services

All plastering work  
carried out



Fully Insured Professional Workmanship

For a clean & tidy job call David

Mobile

07974 891795

Or Email

dk.plastering@hotmail.co.uk



## Woodchurch Cottage Flowers

We are an artisan florist and flower grower. We grow and sell the most amazing seasonal English flowers. All grown here at our smallholding in Woodchurch in Kent. We are a small flower farm working with nature and the seasons.

Call or text 07969 449235

[www.woodchurchcottageflowers.co.uk](http://www.woodchurchcottageflowers.co.uk)



Of course we sell agricultural parts and machinery.

We also sell outdoor and PPE clothing, alongside hand tools, adhesives, hardware, barn paint and much more...

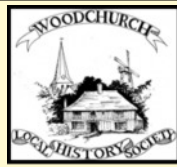
We're online too: [ernestdoeshop.com](http://ernestdoeshop.com)

Hendon Barn, Woodchurch  
Ashford, Kent TN26 3QP  
Tel: 01233 224860

 **ernestDOEpower**  
Where you buy with confidence



The Woodchurch Local History Society generally meets on the first Monday of the month at the village Memorial Hall at 7:30pm. Members pay £12 annually and visitors are always welcome, paying £3 at the door. There is no need to book - just show up on the night. New members are always welcome.



Our next meeting is on Monday April 3rd, 7:30pm and our speaker is local resident Don Grant. He will be presenting his talk entitled 'Spies, Collaborators and Scandal in 1940. Don was able to rescue some police records dating from 1940 to 1941 in which our local village bobbies were reporting on investigations into potential acts of sabotage, spying and collaboration with Germany during WW2. For instance, was the presence of ever changing coloured washing on a clothes line at Newchurch a sign to passing German aircraft. Was the Swan Hotel at Charing a hotbed of scandal and spies? And what was the artist at Biddenden up to? These are just a few of the cases that Don can draw upon for his talk. Finally, our bobby also had a case or two to investigate in Woodchurch. This is a talk of very local interest.

Hoping to see you on April 3rd. For more information ring Geoff on 01233 860393.

### Meals Delivery Service now available in Woodchurch

The "meals-on-wheels" style Meal Delivery service has been running successfully in Woodchurch since the beginning of February 2022 and now has many Woodchurch residents making regular use of the service.



This is a daily delivery of a 2-course hot meal from 12:15 pm, Monday to Friday (not currently at weekends). You do not need to subscribe to every day.

This service is being organised in Woodchurch by The HUB, in conjunction with the Tenterden Social Hub. Your meal will be delivered piping hot by Woodchurch's own volunteers. There are still spaces for customers and also a need for reserve drivers.

For more information please contact The HUB at [enquiries@woodchurchhub.uk](mailto:enquiries@woodchurchhub.uk) or phone 01233 861381 or contact Tenterden Social Hub on 01580 762882.



### 'Connecting Woodchurch'



## The Big Help Out

Bank Holiday Monday 8<sup>th</sup> May

'Thousands of organisations – big and small – are getting together to mark The King's Coronation by giving everybody the chance to try volunteering for themselves and make a difference in their community.'

Quote from the website [The Big Help Out](https://www.thebighelpout.org/)

In support of this campaign, we are organising an Open Day for all Woodchurch groups/clubs/societies to promote what we do, chat about how you can get involved and understand the benefits you'll enjoy

**Monday 8<sup>th</sup> May in All Saints Church 10am – 1pm**

➔ If you'd like to join us and promote your group/club/society on the 8<sup>th</sup> May, please get in contact via:

[Connecting@woodchurchhub](mailto:Connecting@woodchurchhub)

Come along to our next 'Connecting Woodchurch' meeting 25<sup>th</sup> April 6.30pm in All Saints Church

Or leave a message in the HUB (for the attention of Philippa Jones)

➔ If you've already planned a volunteering activity for the Monday 8<sup>th</sup> May, please also let us know so that we can coordinate and help promote in the May newsletter

**We have an incredible number of Village groups in Woodchurch so it would be fantastic to showcase as many as possible on 8<sup>th</sup> May!**



**MUSEUM 150+  
Lottery Draw**



Support your local museum- you could win a £50/£30/£20 prize every month.

Draw numbers for 2022/23 are still available

For more information please contact Joyce via The HUB - [enquiries@woodchurchhub.uk](mailto:enquiries@woodchurchhub.uk) or 01233 861381

### March 2023 Draw Results

1st prize	£50	Peter Wood	875
2nd prize	£30	Val and Brian Smith	668
3rd prize	£20	Jeremy Peel	1294

# Simple Kent Funerals

Relaxed, flexible, imaginative, economical, caring

Applefield Cottage, Redbrook Street, Woodchurch TN26 3QS

Call Toby on 07806 613297 • [www.simplekentfunerals.co.uk](http://www.simplekentfunerals.co.uk)

We work in an eco-friendly and environmentally-sustainable way and are certified as a net carbon neutral business



# We deliver excellent **home care**

*with compassion and a cheery smile!*

You or your loved one may be needing a little **extra care** and support at home, or you may be looking for more **specialised** support.

Whatever you **need**, whatever **time of day**, for however **long** and however **frequent**, we're here to **help**.

When our Care Assistants come to visit, they bring with them **knowledge**, expert **training** and a personality that delivers **compassion**, smiles and **laughter** too!

They are not fazed by ailments, disabilities, conditions or illnesses.

They care like **family**, but with the added benefit of care **expertise**.

## Why choose Caremark?



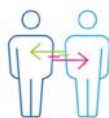
Personalised  
care



Excellent  
standards



Cheery  
visits



Allocated  
Care Assistant



Family  
contact



Confidentiality



“ They're **fabulous**,  
treating me as an  
individual, with **dignity** ”

## Considering home care for yourself or a loved one?

Contact our friendly team today to arrange a free, no obligation appointment. We'll be glad to discuss your very individual personal circumstances.

Find out more



SCAN ME

### Caremark Ashford & Shepway

t: 01233 423330

e: [ashford&shepway@caremark.co.uk](mailto:ashford&shepway@caremark.co.uk)

w: [caremark.co.uk/ashford-and-shepway](http://caremark.co.uk/ashford-and-shepway)

Caremark. The Mark of **EXCELLENT** Care.



## Personalised care

that keeps you **safe** and **happy** at home





Caremark has truly **transformed** my life

## Your **home**, your **care**, your **way**!

*You are unique! We treat you as such.*

Your needs, your daily routine and your preferences are specific to you. That's why we create our care plans around you and don't ask you to fit in with our care plans!

So whether you're looking for companionship once a week, or if you need more specialist care round the clock, we'll work with you to build a plan to suit your exacting needs.

## How we **help** you!

- Companionship
- Personal care
- Mobility support
- Administering medication
- Domestic duties
- Shopping and meal preparation
- 24-hour live-in care
- Emotional support
- Specialist care for Dementia or Parkinson's for example
- Accessing the community
- Social activities
- Support with daily routines

Professional, **caring**  
and always **cheerful**

With us, you can be assured of home care that is:

- Professional and high quality
- Understanding of your individual needs
- Dignified and respectful
- Excellent, with just the right amount of brightness and cheer.

*We are here to care and support you.*

*We'll keep you safe at home and put a smile on your face whilst doing so.*