



# WOODCHURCH COMMUNITY NEWS

The village community working together

November 2022

Contact us: Telephone 01233 861381 Email enquiries@woodchurchhub.uk Web www.woodchurchhub.uk

**OVER 900 COPIES distributed every month in the Woodchurch area**

## WOODCHURCH Community Calendar



### Weekly events:

#### Saturdays:

**Boot Camp** 9:00am-10:00am on the Village Green

#### Sundays:

**Outpost Church** 10:00am-12:00pm in the S&G Community Centre, Lower Road

#### Mondays:

**Pilates** 9:00am-10:00am in the Memorial Hall

**Tai Chi and Qigong** 9:45am - 10:45am at the S&G Community Centre, Lower Road

**Knit and Natter** 2:00pm - 3:30pm in the Pop In Lodge

**Beavers** 6:00pm-7:00pm in the S&G Community Centre, Lower Road

**BodyTone** 6:15pm-7:00pm at the Memorial Hall

**BodyFlex** 7:15pm-8:00pm at the Memorial Hall

**Scouts** 7:30pm-9:00pm in the S&G Community Centre, Lower Road

#### Tuesdays:

**Pilates** 9:00am-10:00am, 10:15am-11:15am and 6:00pm-7:00pm in the Memorial Hall

**Yoga** 10:00am-11:15am in the Pop In Studio

**Coffee Morning** 10:00am-12:00pm in All Saints Church

**Little Leaves Forest School** 10:00am - 12:00pm under 5's Play Group based in Woodchurch

**Community Warden** 1:00pm-3:00pm in the HUB

**Puzzle Club** 2:00pm-4:00pm in the Pop In Lodge

**Blend Youth Cafe** 3:00pm-5:00pm in All Saints Church

**Cubs** 6:00pm-7:00pm in the S&G Community Centre, Lower Road

#### Wednesdays:

**Pilates** 9:00am-10:00am in the Memorial Hall

**Museum Volunteers** 9:30am-12:00pm at the Museum

**Yoga** 10:00am-11:15am in the Pop In Studio

**Over 60s Pop-In** 2:00pm-4:00pm Tea and coffee and boot fair marquee at the Jean Mealham Pop-In

**Rainbows** 5:00pm-6:00pm in the S&G Community Centre, Lower Road

**Fish and Chips** 4:30pm-7:30pm in the Village Car Park

**Brownies and Guides** 6:00pm-7:15pm in the S&G Community Centre, Lower Road

**Boot Camp** 6:15PM-7:15PM on the Village Green

#### Thursdays:

**Art Society** 10:00am-1:00pm at the Memorial Hall

**Margaret Morris Movement** 2:15pm-3:15pm in the S&G Community Centre, Lower Road

**BodyFlex** 6:15pm-7:00pm at the Memorial Hall

**BodyTone** 7:15pm-8:00pm at the Memorial Hall Annexe

Previous editions of the Newsletter can be found on The HUB Web site  
[www.woodchurchhub.UK](http://www.woodchurchhub.UK)



### Thursdays (cont):

**Badminton** 7:00pm-11:00pm at the Memorial Hall

**Explorers** 7:30pm-9:30pm in the S&G Community Centre, Lower Road

### Other Events:

**Tue 1<sup>st</sup>** **A28 Ashford Road - Road Closure at High Halden until 17<sup>th</sup> November. Diversion in place**

**Wed 2<sup>nd</sup>** **Six Bells Quiz Night** 7:00pm at The Six Bells Inn

**Thu 3<sup>rd</sup>** **Connecting Woodchurch meeting** 6:30pm at All Saints Church

**Sat 5<sup>th</sup>** **Memorial Hall Coffee Morning** 10:00am to 12:00pm in the Memorial Hall

**Sun 6<sup>th</sup>** **Table Top Sale** morning at the Pop-In Lower Road

**Eucharist** 11:00am at All Saints Church

**Classic Car meet** 12:00pm at the Bonny Cravat

**Mon 7<sup>th</sup>** **Hi Kent NHS Hearing Aftercare** 10:00 in the Memorial Hall

**CARM** 10:30am to 12:30pm in the Memorial Hall

**WLHS - "The role of ENSA during WW2"** 7:30pm in the Memorial Hall

**Tue 8<sup>th</sup>** **WI "Lewis - The Bonfire capital of the world"** 7:15 in the Memorial Hall

**Wed 9<sup>th</sup>** **Borough Councillors Surgery** 11:00 in The HUB

**Sun 13<sup>th</sup>** **Tenterden High Street - Road Closure from 10:15am to 11:45am for Remembrance Day parade**

**Newspaper Collection** - Scouts

**Remembrance Sunday** 10:45am at the War Memorial at All Saints Church

**Sat 19<sup>th</sup>** **"Woodchurch Yard Together"** all weekend at All Saints Church

**Woodchurch Driving Group RDA Race Night** 7:00pm at the Jean Mealham Pop-In Centre

**Mon 21<sup>st</sup>** **Woodchurch Patients Participation Group (PPG)** 6:00pm to 7:30pm in The Annexe

**Thu 24<sup>th</sup>** **Parish Council Meeting** 7:00pm in the Memorial Hall Annexe

**Fri 25<sup>th</sup>** **Ashford Astronomical Society "101 Questions on Astronomy"** 7:00pm in the Memorial Hall

**Sat 26<sup>th</sup>** **A28 Ashford Road - Road Closure at Bethersden until 28<sup>th</sup> November. Diversion in place**

**Sun 27<sup>th</sup>** **Outpost Church Christmas series talks and carols** 10:00am to 12:00pm in the S&G Community Centre, Lower Road

**Holy Communion** 11:00am at All Saints Church

The Full Community Calendar can be found at  
[www.woodchurchhub.uk/community-calendar](http://www.woodchurchhub.uk/community-calendar)



**Items that were discussed at the October Parish Council meeting held on Thursday 27<sup>th</sup> October 2022**

**Vacant position of Councillor.** Richard Luker applied to be co-opted onto the Parish Council and his application was accepted by a unanimous vote.

**Advertising and Banner Display.** To help clarify the position regarding the display of banners (and other advertising) around the village the Parish Council are finalising an Advertising and Banner display policy.

**Play Park on The Green.** An update was given regarding the current progress on the damaged play area. A working group was formed to consult further with village residents to more clearly understand what is required in and around the play area.

**Kirkwood Avenue development public meeting.** The Parish Council reviewed the report from the meeting held 13<sup>th</sup> October 2022 between residents and CS Developments. The report will soon be available on the Web site.

**Parking in the village.** There were further discussions regarding the management of overnight parking in the village car park and also peak time parking along the side of The Green.

**Planning.** Five planning requests in Woodchurch Parish were reviewed.

**Village traffic survey.** The forthcoming village traffic survey was discussed and survey locations agreed.

Full Parish Council meeting agendas and minutes can be found on the Parish Council Web site:

[www.woodchurchhub.uk/parish-council](http://www.woodchurchhub.uk/parish-council)

If you would like further information please contact the Clerk to the Council at [clerk@woodchurch-pc.gov.uk](mailto:clerk@woodchurch-pc.gov.uk) or through the contact form on the Parish Council Web site.

**How to contact your Parish Council**

**In person:** By talking to one of your councillors - details on the Parish Council Web site

**By email:** [clerk@woodchurch-pc.gov.uk](mailto:clerk@woodchurch-pc.gov.uk)

**By phone:** 01233 861381

**Through The HUB:** Place your correspondence in a sealed envelope marked "Parish Council" and deliver to The HUB

**By post to:** Woodchurch Parish Clerk, c/o Woodchurch HUB, Front Road, Woodchurch, Kent, TN26 2PA

**Through the contact form on the Parish Council Web site:** [www.woodchurchhub.uk/parish-council/](http://www.woodchurchhub.uk/parish-council/)

**Hardship Help for Families in Kent**

If you are experiencing hardship, especially during the current cost of living challenges, please use the QR Code link below to access a 'Help with Hardship' guide. This includes the universal support available across England / Kent, as well as district-specific support.



The guide can also be downloaded from the **HUB Web Site**

**Upcoming roadworks in and around Woodchurch**

**Information from KCC and one.network**

**Road Closed - A28 Ashford Road, High Halden**

**27<sup>th</sup> October - 17<sup>th</sup> November 2022**

Closure in force: Road Closure

Description: Carriageway resurfacing works

**Road Closed - Tenterden High Street**

**13<sup>th</sup> November 2022 - 10:25am to 11:45 am**

Closure in force: Road Closure

Description: Remembrance Parade

**Road Closed - Ebony Road, Stone**

**14<sup>th</sup> November - 20<sup>th</sup> November 2022**

Closure in force: Road Closure

Description: New service connection works between The Stables and Stemps Land by UK Power Networks

**Road Closed - A28 Ashford Road, Bethersden**

**26<sup>th</sup> November - 28<sup>th</sup> November 2022**

Closure in force: Road Closure

Description: New service connection works between Forge Hill and Bailey Fields - UK Power Networks

**Road Closed - Susans Hill**

**5<sup>th</sup> December 2022**

Closure in force: Road Closure

Description: To allow manhole replacement works to be carried out by Southern Water

## WOODCHURCH SURGERY UPDATE

Groundhog Day - A new Prime Minister and a new Health Secretary - Steve Barclay. Any prediction for what they might do next? I imagine his first job will be defending the chaos expected from the roll out of automatic digital access to all patient records in primary care from 1st November.

In essence if you download the NHS App you can currently order medication and have some access to blood tests etc, but from 1st November automatic enrolment is planned enabling you to see all your ongoing notes in real time. There are still some issues to be resolved and the process will be interesting 😊

The concept has been adopted "elsewhere" and apparently results in a better agreed understanding of a person's health, treatment and progress. It has also been demonstrated to give a person more empowerment and ownership of a problem and leads to less dependency on other health professionals. Apparently a win-win...

I totally agree with transparency and after all the records are about us as patients. I expect, though, that there will be an evolution as doctors and patients both understand the language that needs to be used - even "complaining of sore throat" may be better received as "presenting with sore throat"... There will also be instances of sleeplessness if an abnormal result is seen before a health professional has seen or interpreted it.

The future of General Practice will be more digital and aims to reduce contact with GPs by encouraging the use of Pharmacists, Paramedics and Assistants. The country does have a shortage of GPs and Kent is estimated to be short by about 250 full-time GPs. Fortunately, we can still attract doctors and nurses and we really appreciate the kind comments from people which help to make Woodchurch an attractive place to work for all the staff.

With that we will be joined by Mandi in Dispensary who brings a wealth of experience and we say a sad farewell to Rebecca and Denise who have worked really hard for us over the last 3 months but leave to new adventures.

### Flu and Covid

**Flu** clinics have been run over the last 5 weekends and were all very happy occasions. We still have lots of jabs spare so please book in or ask for one while you are seeing a doctor or nurse. The target groups are everyone over 50 and over 18 with a long term condition such as asthma or diabetes.

**Covid** clinics are now set up to book into for anyone eligible for a booster. We have a limited stock of the Pfizer bivalent vaccine. I'm sorry but this is not suitable for the primary two doses so we can only offer booster vaccines. You should continue to contact 119 to book your first or second vaccine. If you have a history of anaphylaxis (severe allergy) please tell us and we can refer you to the Hospital for a special vaccine.

Best wishes to all on behalf of Woodchurch Surgery, Jack Hickey - GP

### Woodchurch Patients Participation Group (PPG)

Our next PPG meeting is on Monday 21st November in the Memorial Hall Annexe starting 6pm.

Our Speaker will be Dr Huw Pinney, Optometrist, who will be talking about macular degeneration

All Woodchurch Surgery Patients welcome!

At each meeting we will be joined by representatives from Woodchurch Surgery and a 'Speaker' from a local group/organisation.

If you would like to receive PPG Surgery updates and details of speakers for the meetings, please contact Philippa at [philippaatwoodchurch@btinternet.com](mailto:philippaatwoodchurch@btinternet.com)

### Woodchurch Memorial Hall.

The hall now has a hearing loop in both the main hall and the annex. It is available for use by anyone hiring the hall at no extra charge. The work to fit the device and ensure it was working properly was completed by a member of the Memorial Hall Committee.

The devices were purchased using some existing funding and also by the grant given to the Memorial Hall by the Carnival Committee.

The Memorial Hall committee would like to express its thanks to all involved in organising the carnival and helping to raise funds for use in our village.

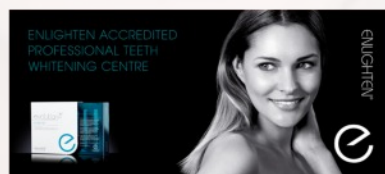
### Surgery Opening Hours

Monday to Friday 9am to 5pm



Hamstreet  
Dental Clinic

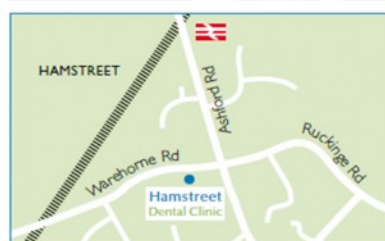
Welcomes You



### Where to find us...

Hamstreet Dental Clinic  
Warehorne Road  
Hamstreet  
Kent TN26 2JJ

 Find us on facebook



Tel: 01233 733848

Email: [hamstreetdentalclinic@gmail.com](mailto:hamstreetdentalclinic@gmail.com)





# All Saints Church



Dear Friends,

This is the time of the year when we are thinking about Remembrance in our churches in several different ways. On Sunday 30<sup>th</sup> October is All Saints Day. This is a special day for our church, as we are called All Saints, so it is a bit like a birthday celebration, when we celebrate hundreds of years of Christian presence in Woodchurch. All Saints Day celebrates men and women who have dedicated their lives to God, and perhaps have given us examples of how to live out our faith; many of our saints lived their lives in extraordinary times of persecution in times gone by. After our 11am service we will be having our Gift Day in church when you can come and meet those of us who lead the church in Woodchurch, and discover how we manage funds donated, and perhaps you might like to make a donation towards the upkeep of our wonderful building.



On Wednesday 2<sup>nd</sup> November we have All Souls Day when we remember those we have loved and lost in our own lives - we have a special service in St Mary's High Halden at 7pm - all are welcome, do get in touch if you need transport.

On Sunday 13<sup>th</sup> November we have Remembrance Sunday, when we especially remember those who gave their lives in times of war, and we meet at the war memorial at 10.45am for the Act of Remembrance, followed by a service in the church - it was wonderful last year to see so many young people representing Scouting and Guiding organisations.

We have now formally launched our "Here to Help" scheme to help those who are struggling during the financial crisis - we have a separate fund with some generous donations which has helped us to get started. If you know anyone who is struggling at this time, then please see the posters and details around the village, in this newsletter and on social media. We are Here to Help. We can help financially. We can help with food parcels and deliveries. We can help by listening. This is all completely confidential - please do not suffer in silence. We are Here to Help.

Reverend Sue



## All Saint's Woodchurch Here to Help



Are you struggling to make ends meet?  
Do you have friends or family who you know are struggling to afford food or heating?

### We are Here to Help

Confidentiality is guaranteed  
We can help with food, food vouchers,  
other financial assistance, advice and support

#### How to contact us

- Via the Church (forms in the church porch or ring 01233 820266)
- Via the School, any member of staff or using the online form: <https://forms.gle/PquddCvUmjijUi997>
- Email us: [heretohelp.woodchurch@gmail.com](mailto:heretohelp.woodchurch@gmail.com)

**Working in conjunction with : Woodchurch Surgery,  
Woodchurch School and The Jean Mealham Pop In Centre**

### Contactless Giving

We have now introduced contactless giving to All Saint's Woodchurch.

If you would like to donate to help maintain our beautiful church you can do so by scanning this QR code with your smart phone or visit our website [www.bhhw.org.uk/donations/](http://www.bhhw.org.uk/donations/) and click the donate button. Thank you for your kindness and generosity.



### Wheel chair donated by the Jean Mealham Centre

The Jean Mealham Pop-In Centre has donated a wheel chair to All Saints Church to assist visitors with mobility challenges whilst they are visiting the Church.

### All Saints Church Fundraising Group

#### **The night that Ronnie Scott's was transported to Woodchurch!**

What an evening of jazz and even glimpses of soul provided by the Drawtones ... and if the evening was not special enough by itself, we had a PROPOSAL during the interval! Fortunately for the blushing musician, the lady said "Yes" and we all hope they return to our church to get married - after all, churches have been at the centre of community life and overseen the milestone events in our lives, for centuries.

We are working hard to ensure that the church remains in our village for future generations. The evening was another in our series of events that shine a light on the plight of our village church and its need for restoration. It was a great evening but we have a long way to go ... so with that in mind we are now turning our thoughts to Christmas. Please pencil in your diary the weekend of 10th and 11th December so that you can visit our Christmas Tree Festival and fill yourself with Christmas cheer. The whole family will be charmed by our sponsored trees and there will be Father Christmas, refreshments and beautiful craft items too - perfect for that last minute, hand-made gift.



**ALL SAINTS CHURCH**  
**CHRISTMAS TREE FESTIVAL**

Bethersden Road, WOODCHURCH, TN26 3QJ

**Craft Stall, Live Music, Refreshments and Big Christmas Hamper Raffle**  
*Childrens activities including guest appearance of Christmas Woody Woodchurch on Friday!*

**Friday 9th December 'til Sunday 11th December**

**Come and see the Church looking spectacular filled with amazing Christmas Trees!**  
*All trees decorated by our village groups. Vote for your favourites!*

**Launch Day: Friday 5pm-8pm**  
 Mulled Wine, Mince Pies and a Children's Choir

**Visit Santa's Grotto and meet his super Elf!**  
**Saturday 10am to 5pm**  
**Sunday 1pm to 5pm**

### Woodchurch Morris Men

The seasons are changing and with it WMM has completed its Summer programme and is now moving into the Autumn and Winter practice season. However, not to be outdone by other groups we too have had our party conference and election of a new leadership. Rather than going to Blackpool for a long weekend we managed to fit our deliberations into one evening in the Scout Hall followed by a few beers afterwards.



We start our practice season on Wednesday 2<sup>nd</sup> November at 8pm in the Scout Hall. The session usually lasts about 1.5 hours and involves good aerobic exercise. Clearly rehydration is required afterwards and this undertaken in measured quantities.

New members are needed and always welcomed wherever they live. Exercise is very beneficial to a good state of physical and mental health. Enjoy and embrace the jokes and light hearted ridicule and come along.

Other dates for the remainder of the year are Tree Lighting on the Village Green, 2<sup>nd</sup> December and the traditional Boxing Day Wassail where we entertain the lunchtime crowd at the pubs.

With best wishes for the remainder of 2022, Mike and Bill.



### Memorial Hall Coffee Morning

The next coffee morning in aid of The Memorial Hall will be held at the Memorial Hall on Saturday 5<sup>th</sup> November from 10 am to 12 pm.



### **COCKTAILS AND CANAPÉS WOODCHURCH VINEYARD**

**Fri 11th and Fri 18th Nov - 6.30pm**

Join us for a very special evening as together we create luxury sparkling wine cocktails.

[woodchurchwine.co.uk/events](http://woodchurchwine.co.uk/events)  
 01233 860276

Woodchurch Wine Estate, Susan's Hill,  
 Woodchurch TN26 3RE

### Jean Mealham Centre open over Christmas

The Jean Mealham Pop-In Centre will be open on Christmas Day for a festive tea for anyone who would like to be with us. The centre will also open on Boxing Day when a roast dinner will be served.

Please contact Richard for more information [07798 566849](tel:07798566849)

### HELP - Lost Gas Water Heaters

Woodchurch Scouts have lost our 2 gas water heaters. I think that we have lent them out and we have not had them returned.

If you have any information as to where they are currently, please let me know as the Scouts use them regularly when on camp.

Thanks, Julian  
 07887 748692





Heather Carolan of Givaudan in Ashford was our "fragrant" speaker at the October meeting with her talk entitled "The History of Perfume". She told us that ancient texts and archaeological

excavations indicate the use of perfumes (from Latin *perfumare* meaning through smoke/mist) in some of the earliest human civilisations - certainly in Ancient Egypt, China, India and the Middle East and Ancient Greece, with the art of making perfume being developed further by the Romans and Arabians. However, France was where the mass production of perfume began in Grasse, a little town in Provence, where the climate and the soil allowed for the abundant production of many of the raw ingredients for making perfumes, such as lavender, jasmine, rose and orange blossom. Once Grasse had been one of the smelliest towns in France, on account of the local tanning industry, but to counteract and mask the dreadful stench, perfume was sprayed on any leather goods, such as gloves. Even today, France is renowned for its perfume industry, which centres on Paris and Grasse.

Although perfume has been used to varying degrees throughout the ages, modern perfumery only really took off in the late 19th century with the commercial synthesis of aroma compounds, such as vanillin and synthetic musk. These new compounds allowed manufacturers of high class perfumes to create a product composed of smells, which had been previously unattainable using only completely natural products. They could also make the end product more accessible to the masses as it is cheaper to produce the synthetics in quantity.

At this stage in the proceedings, Heather quickly donned a crisp, white lab. coat and a pair of blue rubber gloves and handed round a series of scent strips to enable us to follow the progress of perfume manufacture throughout the 20th century to the present time simply by waving the strip beneath our noses. In the early 1900s the most popular fragrances were tough and bold scents with notes of leather, wood and musk and this is a far cry from the clean and floral fragrances which are so popular today. Heather observed that clothing trends, make up and perfume tend to follow economic times and so, in times of recession, perfumes are not so obvious and intense. The best selling fragrance created in 1921 by the couturier, Gabrielle "Coco" Chanel is, of course, the iconic Chanel No. 5. It was her 5th perfume and she later explained that she chose it because it was floral and light and reminded her of "soap and freshly scrubbed skin!" At this time other French perfume houses were opening including Christian Dior, Nina Ricci and Jean Patou. Modern perfumes are created by using a fine balance of various ingredients mixed with ethanol, or ethanol and water and these methods are still used today. Perfume consists of 3 "notes" with the top note (fragile and short lived) being the first fragrance smelt. The middle note is created by the warmth of the skin or the daytime temperature and is usually herbal, floral or spicy. The base note is the longest lasting, acts as the "anchor" of the fragrance and usually has a woody, musky aroma.



Skin types and pH and even diet can affect how the scent reacts to each individual and so Heather strongly advised that we take our time when choosing a perfume, sample only three at a time and, if possible, allow enough time for the base notes to come through before making a selection. All in all, during the course of the evening we wafted approximately 14 varieties beneath our noses - some were more memorable than others. Estee Lauder's Youth Dew was very popular in the 60s and 70s with heavy undertones of ambergris, cinnamon and nutmeg. Then in 1972 Chloe was very popular - white floral with mossy undertones. In the 80s when big shoulder pads and hair dos were all the rage, perfumes like Opium, Dune and Poison were the order of the day. In the 2000s celebrity fragrances became successful as they are easy to wear and reasonably priced to capture the teenage market. Thank you, Heather, for providing such an interesting, stimulating and "smelly" evening!

This autumn period and the run up to Christmas is proving to be a busy time for the WI. In November we are looking forward to hearing about the tree we hope to plant on the Green as part of the late Queen's Green Canopy; a unique UK wide tree planting initiative created to mark Her Majesty's Platinum Jubilee earlier this year. Then on Saturday, 3rd December we are holding our Christmas Market in the Memorial Hall between 2 and 4 pm with lots of stalls and refreshments available. And finally, the WI is to participate in the grand Christmas Tree Festival at All Saints Church, Woodchurch on the weekend of 9th, 10th and 11th December. Meanwhile our next meeting will take place on Tuesday, 8th November at 7.15 pm in the Memorial Hall when our speaker will be Andy Thomas with a talk entitled "Lewes - the Bonfire Capital of the World" and the competition will be "a Miniature Guy".

Hope to see you there.

**WI Christmas Market  
at The Memorial Hall and Annexe  
Saturday 3<sup>rd</sup> December 2:00-4:00pm**



Would you like to have a stall at our market?  
If so, please contact Josie on [josie.mackie@btinternet.com](mailto:josie.mackie@btinternet.com) or 860363

Stalls are £10 and will only be confirmed upon payment.  
Payment should be made by Friday 18<sup>th</sup> November.

OUTPOST CHURCH INVITES YOU TO OUR...

# CAROL SERVICE

Carols • Nativity • Coffee & Tea • Nibbles  
Mulled Wine • Photo Booth • Message



**WHEN?** 10.30am - 11.45am, Sunday 11th December 2022

**WHERE?** Outpost Church meets at the Woodchurch Scout & Guide Community Centre, Lower Road, Woodchurch, TN26 3SQ

[outpostchurch@live.co.uk](mailto:outpostchurch@live.co.uk) [www.outpostchurch.co.uk](http://www.outpostchurch.co.uk)

OUTPOST CHURCH INVITES YOU TO OUR...

# SUNDAY SERVICES

**WHEN?** Most Sunday's 10.30am - 11.45am (See schedule below)

**WHERE?** Outpost Church meets at the Woodchurch Scout & Guide Community Centre, Lower Road, Woodchurch, TN26 3SQ

**WHY?** Songs, prayer, thought provoking messages, children's activities, nibbles, coffee & tea, a warm welcome!



## SUNDAY SERVICE SCHEDULE

NOV 06 - 10.30am - Sunday Service

NOV 13 - 10.30am - Sunday Service

NOV 20 - 10.30am - Sunday Service

NOV 27 - 10.30am - Begin **CHRISTMAS SERIES** of talks & a few carols

DEC 04 - 10.30am - Sunday Service + carols followed by **CHRISTMAS MEAL**

DEC 11 - 10.30am - **CAROL SERVICE** with nativity, photobooth & more

DEC 18 - 10.30am - **HOT CHOCOLATE & CROISSANTS** and carols

DEC 25 - So sorry! - **NO SERVICE TODAY**

[outpostchurch@live.co.uk](mailto:outpostchurch@live.co.uk) [www.outpostchurch.co.uk](http://www.outpostchurch.co.uk)

## WOODCHURCH PLAYERS

A BIG THANK YOU! - to Woodchurch residents/surrounding villages for supporting us. Our comedy play 'Ghosts at the Grange' played to a supportive and enthusiastic audience on both nights, and better still to full houses. Thank you to Ella and Kim Parmee for all their hard work over the past few weeks and all the 'support workers' front of house and technical, without whom we could not get a play on the stage at all!



Rehearsals are well under way for the Players' biggest production of the year - the pantomime. This year it is 'Snow White & the Seven Dwarfs' which will go on stage in January. This year's script is very funny and great family entertainment. Never forget... the pantomime is often a child's first experience of 'live theatre'.

Booking details following shortly

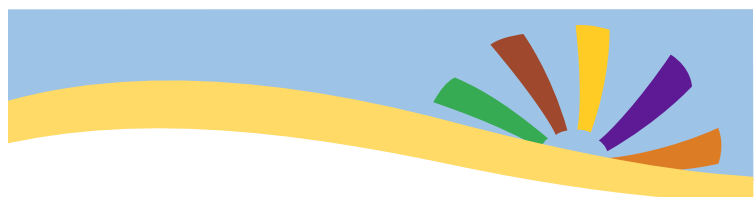
Val Smith

## WoodchurchYardTogether ("WYT")

Our next volunteer gardening weekend in the Churchyard is **19<sup>th</sup> & 20<sup>th</sup> November**.

Keeping in Touch:

[woodchurchYardTogether@btinternet.com](mailto:woodchurchYardTogether@btinternet.com)



## Connecting Woodchurch

To maximise the benefits of the fantastic community spirit we already enjoy in Woodchurch, we are looking to facilitate a way of coordinating events and activities across the Village.

The success of the carnival has shown what can be achieved as a team and we now wish to take this further:

We see some of the benefits being:

Minimising overlap of events that target similar audience

Networking and therefore promote support across events

Promoting wellbeing (awareness of activities to join/volunteering opportunities)

**To get started, we'd like to invite a representative from each group/club/society to join us:**

**November 3rd , 6.30 to 8 p.m.**

**All Saints Church, Woodchurch**

RSVP to Pat Byrne or Philippa Jones:  
[patrick7171@hotmail.co.uk](mailto:patrick7171@hotmail.co.uk) or  
[phillipa@woodchurch@btinternet.com](mailto:phillipa@woodchurch@btinternet.com)



## [The Six Bells Inn](#)

It would appear that it is the season for "all change" throughout the country but have no fear "We are all still here" at The Bells.



November is upon us and the clocks have gone back, so the darker evenings are here for the winter but what a cosy time of year and a wonderful opportunity to light those open fires and spend time with family and friends.

We have now released our Christmas Festive Menu and the spaces in the diary for December are becoming less and less so if you are thinking of arranging a get together of family, friends or work colleagues then maybe now is the time to think of booking.

October has been an eventful month for us all and our restaurant area has certainly been put to great use with celebrations from Anniversaries to Birthdays. Plus, now stored in the memory bank, a thank you to The Woodchurch

Morris Men with supplying their Sea Shanty Singing to celebrate Trafalgar Day (not sure that "Oh I do like to be beside the Seaside" is a Sea Shanty but it had everyone joining in when not trying to hold back the tears from laughing so much).

As they say "What goes on in The Bells stays in The Bells" or then again gets published in the Woodchurch Newsletter.

Our quiz night is back on Wednesday 2 November so hopefully all of the Witches, Ghosts and Ghoulies would have departed by then after being at our Halloween Party on the previous Saturday.

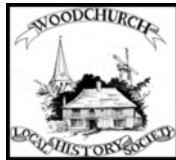
We have our Winter Menu available and its always a delight to see what "Specials" our Chef has prepared. Plus, we have some new evenings being arranged and information will follow soon.

We look forward to seeing you all and can promise you a warm, friendly welcome.

With all our love

Emily and All at "The Bells"

## [Woodchurch Local History Society \(WLHS\)](#)



On Monday 7th November we have invited Delia Taylor to give us an illustrated talk entitled 'The Role of ENSA in the World War II'. The talk will start at 7:30pm in the village Memorial Hall.

ENSA is the acronym for the organisation 'Entertainments National Service Association' and its purpose was to entertain British servicemen whilst serving abroad during the war. Our servicemen certainly enjoyed these concerts and it was during this time that many entertainers became famous personalities (such as Vera Lynn, Terry Thomas, Peter Sellers and Gracie Fields). Whilst most performances were excellent some sub-standard acts led the troops to amusingly term the organisation 'Every Night Something Awful'.



Delia's talk will, I'm sure, will be entertaining in itself - she will include some videos of good and some not-so-good performances. I'm sure you could probably sing along with

some familiar songs. The evening promises to be a light hearted and heart warming experience - so please come along.

Visitors (who are very welcome) will pay £3 at the door but if you prefer you can pay £5 as a part membership subscription. This will also entitle you to admission to our Members Evening on Monday December 5th. During the December evening we will have a talk by one of our members (Isabel Curwen) and then we will all have some Xmas fare - mince pies, sausage rolls etc and wine.

We hope to see you there. Geoff 01233 860393.

## [Christmas Market and Festive Light Spectacular at the Jean Mealham Pop-In Centre](#)

Sunday 4<sup>th</sup> December

from 2pm



# Simple Kent Funerals

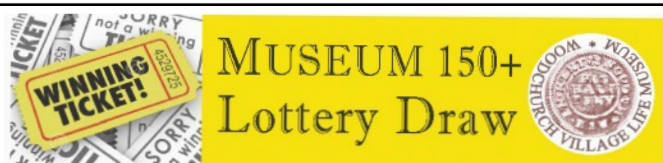
Relaxed, flexible, imaginative, economical, caring

Applefield Cottage, Redbrook Street, Woodchurch TN26 3QS

Call Toby on 07806 613297 • [www.simplekentfunerals.co.uk](http://www.simplekentfunerals.co.uk)

We work in an eco-friendly and environmentally-sustainable way and are certified as a net carbon neutral business





Support your local museum- you could win a  
£50/£30/£20 prize every month.

Draw numbers for 2022/23 are still available

For more information please contact Joyce via The HUB -  
[enquiries@woodchurchhub.uk](mailto:enquiries@woodchurchhub.uk) or 01233 861381

### October 2022 Draw Results

<b>1st prize</b>	<b>£50</b>	<b>M Boulding</b>	<b>690</b>
<b>2nd prize</b>	<b>£30</b>	<b>Mary Parmee</b>	<b>165</b>
<b>3rd prize</b>	<b>£20</b>	<b>Ian Davy</b>	<b>435</b>

### Woodchurch Village Life Museum

In September and October Woodchurch Village Life Museum (WVLM) volunteers welcomed school groups from Woodchurch and Folkestone. We also began a collaboration with a group from Art on the Farm based at the Rare Breeds Centre COT (Canterbury Oast Trust).



WVLM is now closed for the winter season and will re-open to the general public on Good Friday in 2023 which is 7th April. However, if you contact [woodchurchheritagetrust.uk](http://woodchurchheritagetrust.uk) there are always enthusiastic volunteers pleased to open the museum at most times for small groups.

We will be busy between now and then, preparing new exhibitions and still open for our volunteer gardeners and conservationists. All welcome on



### **Woodchurch Cottage Flowers**

We are an artisan florist and flower grower. We grow and sell the most amazing seasonal English flowers. All grown here at our smallholding in Woodchurch in Kent. We are a small flower farm working with nature and the seasons.



**Call or text 07969 449235**

[www.woodchurchcottageflowers.co.uk](http://www.woodchurchcottageflowers.co.uk)

### HELP WANTED

In the New Year we will be revamping both the HUB and Parish Council Web sites. We use standard modular Web design tools (WordPress with Elementor Pro) for WYSIWYG page creation - so no technical Web development skills are required. If you have an eye for designing posters in Publisher, presentations in PowerPoint or newsletters in PagePlus then you will quickly be up to speed with Elementor Pro. If you would like more information about this project please email [The HUB](mailto:The HUB) or call Wade on 07502 220653

Wednesdays from 9:30am or just turn up for a cup of tea or coffee at 11am. Work continues on the milk float and a fantastic 1/18th scaled model of Woodchurch Windmill will be on display in the main museum gallery in April, together with its intriguing story.



## **FOWSA'S Christmas Tree and Wreath sale**

How it works:

- 1) Order your tree from a selection available online at [fowsa.sumupstore.com](http://fowsa.sumupstore.com) or if you would prefer to make your order in person please visit the Woodchurch Hub where both cash and card payments are accepted.
- 2) All trees ordered will be delivered to Woodchurch school and ready for collection on Saturday 10th of December at 1pm.
- 3) Receive a complimentary hot chocolate with every order.

[www.fowsa.sumupstore.com](http://www.fowsa.sumupstore.com)

All trees are delivered straight from a local wholesaler and are competitively priced within the marketplace. Proceeds from each purchase go to Woodchurch C of E Primary School.

**Friends Of Woodchurch School Association**  
[fowsa@woodchurch.kent.sch.uk](mailto:fowsa@woodchurch.kent.sch.uk) Charity No:-1079191





# Everything Outside

Bringing New Life  
To Your Garden

For A Quick Quote From A Company You Can Trust Call

☎ 01580 766 232 ☎ 07795 465 861

## Welcome To Everything Outside

We cover a wide range of services to meet the requirements of our ever-growing client list, if you are looking for a company you can trust to provide a high standard of quality work covering

- ✓ Gardening
- ✓ Garden Design
- ✓ Fencing
- ✓ Clearance
- ✓ Landscaping
- ✓ Hedge Cutting
- ✓ Tree Surgery
- ✓ Digger Work

and much more. Then call our experienced team today on 07795 465 861. To view our full range of services, click on the link below.

Our head office is based in Tenterden, Kent and means we are in the perfect location to proudly service Kent and East Sussex. All our services are tailored to each job we carry out and our team are experience in all aspects of fencing and landscaping services making us your number one choice for all work you require.

Great Work

Great Reputation

Great Price



### Design, planning & build services

Now offering full 3d design development for your extension, new build or conversion project. Please call us for an introduction to our design services at our Woodchurch office.

01233 861177 [vernacularhomes.com](http://vernacularhomes.com)



## fab feet Professional Foot Healthcare

[www.fabfeethealthcare.co.uk](http://www.fabfeethealthcare.co.uk)

**Delivering high quality Podiatric care in the  
comfort of your own home**

Providing a reliable and friendly service of professional treatments for all of your foot ailments:

Call Michelle on:

**Tel: 01233 731207**

Registered & Insured



O  
U  
R  
  
S  
P  
O  
N  
S  
O  
R  
S



### Nicholls Restores

Antique furniture restorer & Wood finishing specialist



01233 860130 - [nichollsrestores@btinternet.com](mailto:nichollsrestores@btinternet.com)

### Tenterden Removals

The Professional Removers in the Weald



Secure Storage at a Competitive Price

To help keep the Newsletter free for the village please become one of our sponsors or give a donation if you can.

[www.woodchurchhub.uk](http://www.woodchurchhub.uk)

or Contact The HUB for more information



**Try our professional  
Home News  
Delivery service**

**New customer introductory  
offers available**

Have your paper delivered before you go to work and read it with your breakfast!

- ✓ Early delivery - before 6.30am (7.30am at weekends)
- ✓ Excellent communication - phone or email ALWAYS responded to
- ✓ Different billing options available
- ✓ All national and local newspapers available to order
- ✓ All magazines available to order
- ✓ Well established reliable company with over 4,400 customers

**Place your order today by telephone on  
01580 763183**

or email us at [mail@jackiesnews.co.uk](mailto:mail@jackiesnews.co.uk)  
or go to [www.jackiesnews.co.uk/place-your-order](http://www.jackiesnews.co.uk/place-your-order)





07944 940 182

EST. Over 35yrs

**Extensions  
General Building  
Property Maintenance  
Brickwork/Stonework Specialist  
Landscaping**

Free Estimates



Chris@cgmbuildersltd.co.uk

[www.cgmbuildersltd.co.uk](http://www.cgmbuildersltd.co.uk)

**KENT**   
**HOLIDAY COTTAGES**

+44 (0) 1233 860 293

info@kentholidaycottages.co.uk



You could advertise your company here  
from as little as £10 per month



*Remedial massage therapy.*

**Your Local Woodchurch Massage Therapist**

- Remedial Massage
- Sports Massage
- Holistic Massage

- Ultrasound Therapy
- Electrotherapy



- Injury Treatments & Rehabilitation
- Rehabilitation Taping/Strapping
- Athletic Taping/Strapping

**Bookings - 07799221043**

[www.musclewhisperer.org.uk](http://www.musclewhisperer.org.uk)

**Treatment Room - Little Vale TN26 3QW**

[musclewhisperer@outlook.com](mailto:musclewhisperer@outlook.com)



Of course we sell agricultural parts and machinery.

We also sell outdoor and PPE clothing, alongside hand tools, adhesives, hardware, barn paint and much more...

We're online too: [ernestdoeshop.com](http://ernestdoeshop.com)

Hendon Barn, Woodchurch  
Ashford, Kent TN26 3QP  
Tel: 01233 224860

 **ernestDOEpower**  
where you buy with confidence



**TENTERDEN GARDEN CENTRE**

THURSDAY 17TH NOVEMBER 5.30PM – 9PM

# Christmas LATE NIGHT SHOPPING

GET A HEAD START ON YOUR CHRISTMAS SHOPPING  
*Eat, drink and shop until late!*

- 10% OFF ACROSS THE STORE!
- LARGE, FREE CAR PARK
- COMPLIMENTARY FESTIVE TREAT & IRISH CREAM HOT CHOCOLATE\*
- PERFORMANCES FROM TENTERDEN PRIMARY SCHOOL CHOIR AND THE DUKES OF SWING DUO
- TRACKLEMENTS CONDIMENTS TASTING TABLE
- FREE PRIZE DRAW TO WIN £100, £50 OR £25 GROVEWELL GARDEN CENTRE VOUCHERS

**SPECIAL OFFER**  
ONE NIGHT ONLY  
Festive Bap & Chips  
**£8.95**

\*18YRS+ ONLY. ALCOHOL FREE OPTION WILL BE AVAILABLE. ONE PER PERSON ONLY

APPLEDORE RD, READING STREET, NR. TENTERDEN, KENT, TN30 7HT  
CALL : 01233 758510 | INFO@TENTERDENGCC.CO.UK

☆☆☆ [WWW.GROVEWELLCO.CO.UK](http://WWW.GROVEWELLCO.CO.UK) ☆☆☆

**Brownies**

**Brownies and Guides**

**Guides**

We look forward to starting our Christmas term with a party and have lots of seasonal activities planned. Since September... The girls have enjoyed working on the autumn challenge making toffee apples, bird feeders, pumpkin carving, glow in the dark bowling and much more.

On the night of the 7<sup>th</sup> October the girls joined the other members of Tenterden division guiding at scout and guide hall and we made shelters from cardboard boxes. It rained so the shelters were tested. The girls appreciated how hard it is to be a rough sleeper. They had been sponsored by family and friends. All money raised went to Porchlight for a project to support young homeless women.

If you would like to join us and you are aged 7 to 14 we meet on Wednesdays from 6 till 7.15. Come for an informal visit or ring Tracy on [01233 861236](tel:01233861236) for more information.

**carm**  
supporting older people in rural areas



**Woodchurch Meeting Point**

**Christmas lunch at The Bonny Cravat**

**Monday 5 December, 12.30pm**

CARM Meeting Points are your local place to drop in, enjoy a cup of tea and a chat, the occasional speaker, activity, or outing, and make friends. £1 voluntary contribution. We meet on the first Monday of the month at Woodchurch Memorial Hall from 10.30am – 12pm.

Everyone is welcome so do drop in or get in touch with CARM on [01233 758122](tel:01233758122). Christmas lunch is subsidised for members.

We are a local Charity working to reduce social isolation and loneliness. Registered charity no. 1184552  
[www.carmromneymarsh.org.uk](http://www.carmromneymarsh.org.uk)



Partnered with



Invite you to  
**Woodchurch on The Green**  
**CHRISTMAS TREE**  
**LIGHTING CEREMONY**

and

**WOODCHURCH CE SCHOOL**  
**CHRISTMAS MARKET**

**Friday 2nd December 2022**

3pm 'til 6pm (Tree switch on 5pm)

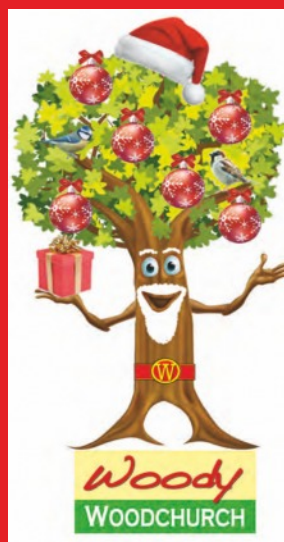
on The Green, Car Park and in the Memorial Hall

We are now taking bookings for local craft and produce stalls to sell their wares in the car park at our festive event.

Up to a 2 metre plot cost just £15.

To book a space in the first instance please email for an application form:

[fowsa@woodchurch.kent.sch.uk](mailto:fowsa@woodchurch.kent.sch.uk)



Included this year we have:

**Santa's Grotto**

**Childrens' Fun & Games**

Hot food & refreshments

*including Mulled Wine*

**Carol Singing**

*and the launch of*

**Woody Woodchurch's Winter Wonderland**

*- Where's Woody?*

*- More details in December Newsletter*