



WOODCHURCH COMMUNITY NEWS

Our village community working together

December 2022

Contact us: Telephone 01233 861381 Email enquiries@woodchurchhub.uk Web www.woodchurchhub.uk

OVER 900 COPIES distributed every month in the Woodchurch area

WOODCHURCH Community Calendar



Weekly events:

Saturdays:

Boot Camp 9:00am-10:00am on the Village Green

Sundays:

Outpost Church 10:30am-11:45am in the S&G Community Centre, Lower Road

Mondays:

Pilates 9:00am-10:00am in the Memorial Hall

Tai Chi and Qigong 9:45am and 10:45am at the S&G Community Centre, Lower Road

Knit and Natter 2:00pm - 3:30pm in the Pop In Lodge

Beavers 6:00pm-7:00pm in the S&G Community Centre, Lower Road

BodyTone 6:15pm-7:00pm at the Memorial Hall

BodyFlex 7:15pm-8:00pm at the Memorial Hall

Scouts 7:30pm-9:00pm in the S&G Community Centre, Lower Road

Tuesdays:

Pilates 9:00am-10:00am, 10:15am-11:15am and 6:00pm-7:00pm in the Memorial Hall

Yoga 10:00am-11:15am in the Pop In Studio

Coffee Morning 10:00am-12:00pm in All Saints Church

Little Leaves Forest School 10:00am - 12:00pm under 5's Play Group based in Woodchurch

Community Warden 1:00pm-3:00pm in the HUB

Puzzle Club 2:00pm-4:00pm in the Pop In Lodge

Blend Youth Cafe 3:00pm-5:00pm in All Saints Church

Cubs 6:00pm-7:00pm in the S&G Community Centre, Lower Road

Wednesdays:

Pilates 9:00am-10:00am in the Memorial Hall

Museum Volunteers 9:30am-12:00pm at the Museum

Yoga 10:00am-11:15am in the Pop In Studio

Over 60s Pop-In 2:00pm-4:00pm Tea and coffee and boot fair marquee at the Jean Mealham Pop-In

Rainbows 5:00pm-6:00pm in the S&G Community Centre, Lower Road

Fish and Chips 4:30pm-7:30pm in the Village Car Park

Brownies and Guides 6:00pm-7:15pm in the S&G Community Centre, Lower Road

Morris Dancing Practice 8:00pm-9: in the S&G Community Centre, Lower Road

Thursdays:

Art Society 10:00am-1:00pm at the Memorial Hall

Margaret Morris Movement 2:15pm-3:45pm in the S&G Community Centre, Lower Road

BodyBlast 6:30pm-7:20pm at the Memorial Hall Annexe

Badminton 7:00pm-11:00pm at the Memorial Hall

Explorers 7:30pm-9:30pm in the S&G Community Centre, Lower Road

Other Events:

Fri 2nd **Christmas Tree lighting and Christmas Market** from 3:00pm on the Village Green

Music at the Bonny Cravat 8:30pm "The concrete Igloos"

Sat 3rd **WI Christmas Market** 2:00-4:00pm at the Memorial Hall

Music at the Six Bells 7:00pm "Steelworks"

Sun 4th **Outpost Church Sunday Service and Christmas meal** 10:45 at the S&G Community Centre, Lower Road

Morning Worship 11:00am at All Saints Church

Christmas Market & Family Fun Day 2:00-6:00pm at the Jean Mealham Pop-In Centre, Lower Road

Mon 5th **Susan's Hill - Road Closure outside Rose Cottage**
CARM 10:30am to 12:30pm in the Memorial Hall and
Christmas Lunch 12:30 at the Bonny Cravat
WLHS - Members Evening 7:30pm in the Memorial Hall

Fri 9th **Carols and Christmas Tree Lighting** at Six Bells Park
Christmas Tree Festival from 5:00pm at All Saints Church. *Continues until Sunday 11th December*

Sat 10th **Music at the Six Bells** 7:00pm "Northwood Acoustic Duo"

Sun 11th **Outpost Church Carol Service** 10:45 at the S&G Community Centre, Lower Road

Holy Communion 11:00am at All Saints Church

Tue 13th **WI Christmas Party** 7:15 in the Memorial Hall

Thu 15th **Parish Council Meeting** 7:00pm in the Memorial Hall Annexe

Fri 16th **Ashford Astronomical Society Christmas Quiz** 7:00pm in the Memorial Hall

Music at the Six Bells 7:00pm "JD2"

Sat 17th **Christmas Carols and Family Fun** 6:00-8:00pm at the Jean Mealham Centre, Lower Road

Sun 18th **Outpost Church Hot Chocolate and Carols** 10:30 at the S&G Community Centre, Lower Road

Morning Worship 11:00am at All Saints Church

Mon 19th **Appledore Road, Kenardington - Road Closure**

Fri 23rd **The Woodchurch Mummies** "It Will Be All Bite On The Night" 9:00pm at The Six Bells

Sat 24th **Crib and Christingle Service** 4:00pm at All Saints Church

Music at the Six Bells 7:00pm "Pepper Slater Duo"

Midnight Communion 11:00pm at All Saints Church

Sun 25th **Festive Tea** - Christmas Day at the Jean Mealham Centre, Lower Road

Morning Worship 10:00am at All Saints Church

Mon 26th **Jean Mealham Centre open for roast dinner**

Football - Bonny vs Six Bells 10:30am on the Village Green

Sat 31st **Woodchurch Country** from 5:30pm - New Year at The Six Bells



WOODCHURCH PARISH COUNCIL • **UPDATE** •

The Parish Council would like to Welcome Ms Aniko Szocs (Ani) as the new Woodchurch Parish Clerk and RFO. Ani is a highly experienced Parish Clerk who has already begun to make a positive difference to the running of the Council.

Planning

As you know your Parish Council is a Statutory Consultee for planning applications within the Parish but does not have the power to approve or reject projects. The PC can only advise based on local knowledge. The power to approve/reject rests with the ABC Planning Authority or, in the case of an "Appeal", with the Planning Inspectorate, as appointed by the Secretary of State.

Outline Planning application (with all matters reserved except for access), for the erection of up to 40 dwellings (including affordable Housing), structural planting and landscaping, on the land site between 82 and 120 Front Road: Appeal Approved.

Following planning objections by the Parish Council, Woodchurch Villagers, (and after a period of non-determination) the ABC Planning Department, Gladman Developments Ltd., requested an Appeal be heard by The Planning Inspectorate based in Bristol. The October Appeal hearing (via Internet) and the site visit was attended by two members of your Parish Council, ABC, the Developer and other interested parties. Following the Inspectors four-week review, the Planning Inspectorate granted Outline Planning Permission and published their decision in November, which can be accessed on ABC's Planning Website under 21/01284/AS (a hard copy will also be available in the Hub). The approval has come with a list of 23 Conditions which make interesting reading. Your Parish Council are following up on this outline planning application approval with ABC and will continue to question the Appeal decision.

Land North of 14 and 15, Kirkwood Avenue, 21/02142/AS.

Your Parish Council also discussed in full, the offer made by C.S.Developements for the gifting and management of the ecological lands associated with the proposed three bungalows, within the conservation area north of Kirkwood Avenue. The Parish Council voted not to take on the management of these lands.

Village Traffic

The Parish Council regularly receives correspondence from village residents regarding traffic speeds in their area. Whilst the Parish Council can help support affected residents, we do not have the powers to make changes to roads - this must be done through [Kent County Council](#). WPC are working closely with David Robey, our KCC representative on our local Traffic Improvement Plan. If you have specific concerns regarding traffic in your area please let us know so that we can help progress these with KCC Highways.

School Parking

Councillor Jones met with Ms Dawes, Head Teacher of Woodchurch to discuss the safety and parking around the vicinity of the school. Woodchurch Parish Council have purchased Traffic Cones for the School to place in areas of concern outside the school. We hope this will prevent the blocking of driveways, junctions, dropped kerbs and will prevent parking on corners that restrict visibility. We thank everyone within our community who already park and drive carefully in this area. Safety is paramount to all of us and we hope these measures will improve this.

The discussion included the application for a Lollipop Person to assist families for crossing the road safely. The visibility of a Lollipop person outside a school can reduce the speed of drivers. Woodchurch Parish Council support the application for this.

We are working with Kent County Council in hope to achieve funding for additional road signage and markings.

The Bonny Cravat continue to support parking in their car park during drop off and pick up times. All families are encouraged to pop in to the pub if you find yourself waiting a while in the car park. Coffee is available! Please keep an eye out for their Christmas family film night of 'Elf' and let the Bonny Cravat team know of any family friendly ideas you may have.

Finally, the school would like to make signs to display by the school to encourage drivers to slow down and park carefully. We would like to know of anyone able to construct some signs or frames, that could be used by the school to display these. Please contact us or the school directly if you are able to offer your help!

How to contact your Parish Council

In person: By talking to one of your councillors - details on the Parish Council Web site

By email: clerk@woodchurch-pc.gov.uk

By phone: 01233 861381

Through The HUB: Place your correspondence in a sealed envelope marked "Parish Council" and deliver to The HUB

By post to: Woodchurch Parish Clerk, c/o Woodchurch HUB, Front Road, Woodchurch, Kent, TN26 2PA

Through the contact form on the Parish Council Web site: www.woodchurchhub.uk/parish-council/

Upcoming roadworks in and around Woodchurch Information from KCC and one.network

Road Closed - Susan's Hill

5th - 6th December 2022

Closure in force: Road Closure

Description: Southern Water manhole replacement

Road Closed - Appledore Road, Kenardington

19th December 2022 - 09:30 to 15:30

Closure in force: Road Closure

Description: BT utility works

WOODCHURCH SURGERY UPDATE

The NHS has been looking for projects to help relieve the winter pressures. Some of the projects are going to stay and we are asked to promote them. This includes the use of Clinical Pharmacists and we have been asked to refer "minor illnesses" to local pharmacists who can help and provide advice, over the counter medications or prescriptions for people when we do not have appointments available. The process is pretty simple and we will give your details to the pharmacist who will call you back. As a national pilot 90% of people referred get a solution without any further intervention, so it seems to work pretty well.

The Patient Participation Group held a meeting in the Memorial Hall last week which is always well attended. Dr Huw Pinney (Brownbills Opticians) prepared a talk about Macular Degeneration but had to describe the images that he had prepared for the duration of another power cut. He is also one of several local opticians offering a "Minor Eye Conditions Service" which is a free service for people suffering from acute eye conditions. It is brilliant, it is free and people are usually seen on the same or next day - just Google "MECS Kent" to see the list of providers.

We also get frequent requests for problems relating to teeth which we are generally not well-equipped to deal with. These requests do get pushed back as this is an entire specialty in its' own right and needs to be dealt with by a Dentist. So, while Eyes and Teeth may not be very GP things, we do see lots of other things and apparently October saw the first month that over 1 million GP appointments were delivered in Kent. We still offer the choice of in-person or telephone consultations and fortunately are seeing a good number of people back in the surgery.

The Woodchurch in Bloom team had a busy session this month planting our planters made from sustainable wood. We are grateful to them for their ongoing enthusiasm and by the spring will be surrounded by some beautiful plants. They are taking on new recruits... Also adorning the surgery is a lovely new bench from the "Woodpeckers of Kent" which is a social enterprise group led by Eric Ubel designed to change young people's lives. The involvement of the village in these projects really does cement the community spirit and we are so proud to be part of it.

Part of the team does work on weekends so please don't be surprised if you get a call on a Saturday from one of us. There is also an NHS led survey following all appointments that is a series of 3 text messages. It is genuine and your comments are discussed at one of our monthly meetings so thank you for taking the time to comment. We wish all of you a healthy and happy Christmas period. I think the children are ready for a break and we can all be fresh for 2023. We are open for all days except Bank Holidays but, as usual, will not take advanced bookings for the 3 days between Christmas and New Year. On behalf of the whole team I wish you a very merry festive period!

Best wishes, Jack Hickey - GP

Christmas Market at The Memorial Hall and Annexe, Woodchurch

TN263PA

Saturday 3rd December
2:00-4:00pm



Do come and buy your Christmas presents and decorations from our local craft stalls.

Stalls include:

Toys, Teddies, Jewellery, Candles, Jams, Jellies, Cards, House Plants.

Tombola, Competitions, Books, Cakes. Refreshments will be served: tea, coffee, squash and home-made cakes.



Organised by Woodchurch WI

Surgery Opening Hours

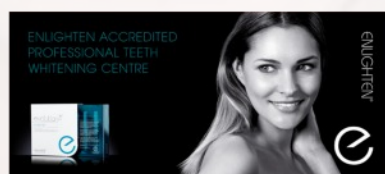
Monday to Friday 9am to 5pm

 **invisalign**



**Hamstreet
Dental Clinic**

Welcomes You

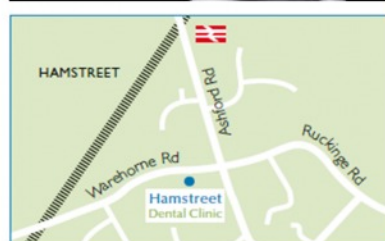


Where to find us...

Hamstreet Dental Clinic
Warehorne Road
Hamstreet
Kent TN26 2JJ



Find us on facebook



Tel: 01233 733848

Email: hamstreetdentalclinic@gmail.com

All Saints Church



Dear Friends,

It is great to see how many different events there are coming up in the village as Christmas approaches. After all of our lockdown experiences over the last couple of years, I know that people are really enjoying being able to come together as a community, and I am looking forward to getting to as many events as I can.



As Christians we think of God sending his son Jesus into a world which was lost and broken - today's world can feel the same. Whilst we are now less troubled by Covid, we seem to have other difficulties and problems - war, natural disasters, and a cost of living crisis which will impact us all. Into this dark world, Jesus brings light, and I hope that you might find time to celebrate and give thanks for that this Christmas. Please join us for our Family Crib and Christingle Service at 4pm on Christmas Eve, our "midnight" communion service at 11pm on Christmas Eve, or our Christmas Day Morning Worship at 10am.

We are all called to bring the light of Christ into the lives of those around us. Particularly those who are struggling at this time. Christmas can be a difficult and lonely time; please try to find time to reach out to those around you who may be feeling low at this time. I am always available to chat to anyone who is experiencing difficulty of any kind.

Our Here to Help scheme is up and running for those experiencing financial hardship of any kind. We will be providing supermarket vouchers via the school for families who need help to cope with the extra pressures of Christmas shopping. We will be having warm days in church, thanks to a grant from Ashford Borough Council, providing a warm space, warm food, and company for those who might be struggling to heat their homes. If you are worried about making ends meet, then please get in touch - heretohelp.woodchurch@gmail.com or please ring me on 01233 820266

Reverend Mike and I wish everyone a Merry Christmas, and a Happy and peaceful New year. Reverend Sue

[All Saints Church Fundraising Group](#)

Oh Christmas tree, Oh Christmas tree, how lovely are your branches ...

Do you fear that this Christmas could be overtaken by so much recent negative news? Perhaps you feel that this year even your tinsel has lost its sparkle? Maybe you just want to reconnect with the true meaning of Christmas? Whatever your reason come and enjoy our wonderfully festive Christmas Tree Festival and put some of the traditional cheer back into your life in the run up to Christmas itself.

So many trees have been sponsored by local businesses and groups. You can vote for your favourite and even Father Christmas will be there to spread Christmas joy to young and old. There will be refreshments, music and our fabulous array of handmade crafts, just ready to be wrapped and popped into stockings or under the tree. Come yourself or bring the family and reclaim the traditional values and spirit of Christmas in your heart.



ALL SAINTS CHURCH
CHRISTMAS TREE FESTIVAL
Bethersden Road, WOODCHURCH, TN26 3QJ

Craft Stall, Live Music, Refreshments and Big Christmas Hamper Raffle
Childrens activities including guest appearance of Christmas Woody Woodchurch on Saturday!

Friday 9th December 'til Sunday 11th December

Come and see the Church looking spectacular filled with amazing Christmas Trees!
All trees decorated by our village groups. Vote for your favourites!

Launch Day: Friday 5pm-8pm
Mulled Wine, Mince Pies and a Children's Choir

Visit Santa's Grotto and meet his super Elf!
Saturday 10am to 5pm
Sunday 1pm to 5pm

Woodchurch Yard Together ("WYT")

Thank You



for all the support throughout 2022 in maintaining our Churchyard – volunteers, donations, refreshments, encouragement, tools etc

Together we have made a difference!

WoodchurchYardTogether@btinternet.com

Brownies

Brownies and Guides

Guides

We end our Christmas term making festive gonks and home made chocolates sweets and other treats

We return on January 11th at 6pm for winter games, first aid training, New Year celebrations and much more
We welcome all girls 7 and over

Why not come and join us

Fran, Vicki and Tracy

OUTPOST CHURCH INVITES YOU TO OUR...

CAROL SERVICE

Carols • Nativity • Coffee & Tea • Nibbles
Mulled Wine • Photo Booth • Message



WHEN? 10.30am - 11.45am, Sunday 11th December 2022

WHERE? Outpost Church meets at the Woodchurch Scout & Guide Community Centre, Lower Road, Woodchurch, TN26 3SQ

outpostchurch@live.co.uk www.outpostchurch.co.uk

OUTPOST CHURCH INVITES YOU TO OUR...

SUNDAY SERVICES

WHEN? Most Sunday's 10.30am - 11.45am (See schedule below)

WHERE? Outpost Church meets at the Woodchurch Scout & Guide Community Centre, Lower Road, Woodchurch, TN26 3SQ

WHY? Songs, prayer, thought provoking messages, children's activities, nibbles, coffee & tea, a warm welcome!



SUNDAY SERVICE SCHEDULE

DEC 04 - 10.30am - Sunday Service + carols followed by **CHRISTMAS MEAL**

DEC 11 - 10.30am - **CAROL SERVICE** with nativity, photobooth & more

DEC 18 - 10.30am - **HOT CHOCOLATE & CROISSANTS** and carols

DEC 25 - So sorry! - **NO SERVICE TODAY**

outpostchurch@live.co.uk www.outpostchurch.co.uk

Arthur Stroud (1929-2022)

Arthur Stroud was born on 24th October 1929 in Kenya. His mother was a Woodgate at High Halden where Arthur and Clare married in 1959. Their children Sarah, Julia and Rebecca arrived over the next ten years.

Arthur had joined the Royal Air Force at 16 years age in 1945. He qualified as a pilot and flew Lancasters, Lincolns and Canberras. In 1956-7 he was involved with the logistics for the British nuclear weapon testing at Kirimati (Christmas Island) in the Pacific Ocean, 2000 miles north-east of Australia. In 1984 he ended his military career with the rank of Wing Commander, representing Britain in NATO at Brussels. Arthur's older brother Jim was also an RAF pilot; he was killed in the Avro Vulcan accident at Heathrow in 1956.

In 1965 Arthur brought his family including three small children to Woodchurch. They lived at Redbrook Cottage which is one of the five oldest in the village, being built in the middle of the 15th century as a Wealden hall house.

Once retired and at home, Arthur started a professional accountancy business. He was treasurer of Woodchurch Village Life Museum for about 20 years, handling large amounts of cash from the 18 annual Wings & Things shows. A less arduous task was being treasurer for a mere 15 years of the Woodchurch Local History Society. In May 1999 Arthur and Clare invited the Society into their home for a conducted tour of the house and a couple of dozen of us crowded in. They generously repeated this invitation in May 2000 for a second party of the same size.

Arthur and Clare had a back garden guarded by a flock of fierce geese whose eggs were delicious. One year they found that a wild boar had built a beautiful nest for a growing family in the garden of their other house next door. They erected a protective fence so that the animals would not wander off into danger. Arthur was the leader of the project that produced the booklet *Then & Now*. It was published on 1st January 2000 and a total of over two thousand copies have been sold in aid of the museum.

Arthur lost Clare in 2019 and was in poor health during the last 12 months. The family are grateful to Woodchurch Surgery who helped them look after him at home where he died peacefully on Thursday 24th November 2022.

Arthur's funeral will be at St. Marys Church High Halden on Monday 19th December at 12:30. The committal will be in the churchyard at 13:15. Our thoughts are with Rebecca, Julia and their family. **Thank you, Arthur.**



**"Remember, Remember the 5th of November,
The Gunpowder Treason and Plot
I see no reason why Gunpowder Treason
Should ever be forgot!"**

Andy Thomas was born and bred in Lewes, in East Sussex. He was, therefore, eminently qualified to be the speaker at our November meeting with his talk entitled "Lewes - Bonfire Night Capital of the World!" Andy explained that Lewes has gained this reputation on account of the festivities held annually in the town and its environs on Guy Fawkes Night. The entire talk was illustrated by Andy's spectacular, personal photographs taken over many years and this really helped to give a sense of the whole proceedings from start to finish. Thousands of Lewesians march through the town as part of the torch lit processions organised by the town's seven individual Bonfire Societies.



Later in the evening each Society marches to its own fire site, where there is an enormous bonfire and a firework display and various effigies burned. This year's effigies included a grotesque figure of Liz Truss and a very miserable looking Vladimir Putin, but in previous years both Boris Johnson and Matt Hancock have featured and last year (2021) an effigy clothed all in black and carrying a huge syringe aloft in one hand and a green glowing Covid virus in the other hand was marched through the streets. Andy explained that although it is well known that Bonfire Night primarily celebrates the failure, in 1605, of the Gunpowder Plot - an attempt by Catholic conspirators to blow up the Houses of Parliament and assassinate King James 1 - in Lewes, a procession of 17 flaming crosses, also commemorates the brutal burning at the stake of a group of 17 Protestant martyrs from the town during the reign of Mary 1. The celebrations also involve the burning of an effigy of Pope Paul V, as he was Pope at the time of the Gunpowder Plot and banners bearing the words "No Popery" are also carried through the town. One of the Bonfire groups even stops at the town's War Memorial for an act of remembrance for the fallen in both of the World Wars, so each Society very much does its own thing.

All too soon the evening is over and sometime during the early morning hours a secret army emerge to clear up the almost overwhelming amount of debris, so that by the time everyone is waking, the streets appear practically normal once more! Only then can preparations begin in earnest again for next year's Bonfire Night! Thank you, Andy, for such an enlightening evening!

Do join us for our Christmas Party, with games and an American Supper on Tuesday, 13th December!

Christmas Market & Family Fun

Sunday 4 December 2:00-6:00pm

Indoor & outdoor stalls ~ Festive crafts & gifts
~ Local produce ~ Food & drink

Visit Father Christmas in his Grotto ~ Say Hello
to Pinky the Party Pony ~ See how many magical &
merry light & sound displays you can find and
much, much more!

**Jean Mealham Popin Centre,
Lower Road, Woodchurch TN26 3SQ**



Please contact Richard for more information 07798 566849



**Jean
Mealham
Popin
Centre**
invites you to
join them:

Christmas Day

Festive tea for those who would like to join

Boxing Day

Roast dinner for those who would like to join

**Jean Mealham Popin Centre,
Lower Road, Woodchurch TN26 3SQ**

All welcome

*Don't be alone over
Christmas*

Please contact Richard for more information
07798 566849



SPARKLING FESTIVE TEA AT WOODCHURCH VINEYARD

Woodchurch Vineyard and ârtisserie of Tenterden are offering a unique afternoon tea experience on Sunday's in December at Woodchurch Vineyard.

What's included:

- A glass of sparkling wine (Rosé or Classic)
- A selection of freshly made sandwiches
- Freshly baked pastries
- 3 luxury desserts from ârtisserie
- A scone with jam and clotted cream
- Tea/coffee



BOOKING REQUIRED

Please visit woodchurchwine.co.uk/events for available dates and times. Guests must book at least 2 days in advance.

Bonny Cravat



Christmas is just around the corner and we can't believe we've already been running the Bonny for nearly 2 months already! The support from everyone has been amazing and it's been great to see everyone back!

The World Cup has begun and we're so excited to be showing all England games on our big screen in the restaurant! It's looks and sounds amazing and there's plenty of space for everyone! We also have a 'Match Menu' of burgers & chips, scampi & chips, etc. to keep you going throughout the games!

We love a bit of live Music at the Bonny so on the 2nd December the amazing 'The Concrete Igloos' will be back playing for you all from 8:30pm, you won't want to miss it.

Quiz night will be at 7pm on Tuesday 20th December, so a little later this month but it's our big fat quiz of the year... so make sure you swat up on all things 2022!!

We are currently taking bookings for our Festive Menu AND Christmas Day! Tables are going quickly so book now if you don't want to miss out!

Now for the best bit.... Along with the Six Bells, we are bringing back a bit of fun to Boxing Day this year. The Bonny V Bells Boxing Day football match will be taking place at 10:00am on the green...we hope to see you all there to support your pubs!!!

WOODCHURCH PLAYERS - PANTOMIME 2023

BOOKING NOW

Snow White & the Seven Dwarfs



Script by Alan P Frayn
Directed by Kim Parmee
Woodchurch Memorial Hall

January 20th, 21st, 27th, 28th at 7.30pm
Saturday 21st, Sunday 22nd, & Saturday 28th at 2.30pm

Booking on line @ www.Woodchurchplayers.com

Or in person at 'The Hub' Front Road, Woodchurch

Tickets cost £10 adults, children £8

Rehearsals are well under way for our January pantomime 'Snow White & the Seven Dwarfs'. The Players (who were first known as 'The Wednesday Club') have been performing a traditional pantomime in the village for many years.

So please come along and support us we bring you a colourful funny pantomime, a beautiful heroine, a handsome prince, a wicked queen and a traditional pantomime dame, not forgetting of course - Brainy, Smiley, Blushful, Grumbly, Snoozy, Sniffle and Dozy.

Christmas

Carols

& Family Fun

Saturday 17 December

6:00-8:00pm

6:00 Christmas sing-along supported by **The Ruby Sisterz** on the front lawn

6:45 Theatre organ concert by **Chris & Jo Powell** in the main hall

Food & drink ~ **See the festive lights** ~
Mulled wine & mince pies ~ **winter cheer** !

Jean Mealham Popin Centre,
Lower Road, Woodchurch TN26 3SQ

FREE Entry & Parking

Please contact Richard for more information 07798 566849

[The Six Bells Inn](#)



Its Christmas Time.....well nearly ! December is here and if anyone can let me know where the past 11 months have gone that would be appreciated.

So, the World Cup has arrived and we have our hopes up for an England win !! Shot glasses poised waiting for the next England Goal and the anticipation hangs in the air.....who knows?? Perhaps this is our time for Glory !!!!

Meanwhile, back in the real world of the Six Bells, the fires are now a regular occurrence and I think a suitable place for "Welly Boots" needs to be arranged, seeing as the rain appears to like being in Woodchurch. Our Festive Menu is poised waiting to make its first appearance on the 1st of December, there are a few dates still available so please call in or phone to make enquiries. Our winter menu is still running and our Roasts are a firm favourite on Sundays.

We have live music planned for 3 December with Steelworks playing for us, then 10 December with Northwood Acoustic Duo, JD2 on the 16 December and Christmas Eve with the Pepper Slater Duo. Then we are open Christmas Day lunchtime for drinks then (drum roll please) the long-awaited revival of the Boxing Day Football Match between "The Bells" vs "The Bonny". Then, if you still have room for more excitement, its our "Cowboy and Indians" themed New Years Eve Party with the one and the only, with a new name solely for this one evening.The Outlaw DJ Johnny "The Kid" Quo playing his favourite tunes. Then farewell to 2022 and a warm welcome to 2023 and who knows what this year will hold for us all.

With Christmas Wishes and A Happy New Year to one and all.

With Lots of Love - All of us at "The Bells"

[‘Connecting Woodchurch’](#)

Thank you to all those who joined us for our first ‘Connecting Woodchurch’ meeting on 3rd November. It was great to feel the energy and collect the many ideas for how we can better coordinate and network across the various groups, clubs, organisations & support initiatives. As a result of the first meeting and reflecting on all the discussions, we are pleased to confirm our immediate next steps:

- We will be promoting ‘Connecting Woodchurch’ via a stall at the Christmas Tree lighting ceremony on 2nd December – please come and see us to familiarise yourself with the HUB community calendar, find out about upcoming events in the Village and more.
- Our next ‘Connecting Woodchurch’ will be on Thursday 12th January - 6.30pm to 8pm at All Saints Church – all are welcome.
- The focus for the January meeting will be on calendar events for 2023 – confirmed and pending eg Woodchurch Fayre, ideas for the Coronation weekend in May plus holding a ‘Connecting Woodchurch’ event in 2023 for Villagers to find out more about the many clubs, groups, societies and more
- Build/adapt a mobile unit that could be used around the Village to promote upcoming events throughout the year
- We will be working closely with the HUB to ensure we use tools already available and maximise these further

DATE FOR YOUR DIARY – OUR NEXT ‘CONNECTING WOODCHURCH’ MEETING:

THURSDAY 12TH JANUARY 6.30PM TO 8PM IN ALL SAINTS CHURCH

Simple Kent Funerals

Relaxed, flexible, imaginative, economical, caring

Applefield Cottage, Redbrook Street, Woodchurch TN26 3QS

Call Toby on 07806 613297 • www.simplekentfunerals.co.uk

We work in an eco-friendly and environmentally-sustainable way and are certified as a net carbon neutral business

Woodchurch Local History Society (WLHS)



At 7:30pm on Monday 5th December our society holds its Members' Evening in the Memorial Hall. It is customary for us that a society member (rather than a outside speaker) gives a short talk about a subject of his or her interest and this will be accompanied by wine and Christmas nibbles, mince pies etc.. We hope to make this a relaxed social occasion to end the year..

This year we have Isobel Phillips (nee Curwen) presenting her talk on 'Osteoarchaeology - Bones, Bodies and Burials'. Isobel is one of our youngest members and is a professional archaeologist. She will tell us about techniques to date bones which have been uncovered from ancient graves. The approximate age of the remains will tell investigators whether they were dealing with people from, for example, the Middle Ages, Anglo-Saxon times or even earlier. I understand that Isobel will raise the case of the Amesbury Archer (illustrated) who was discovered in 2002 during excavations for a new housing development.



So, if you are a member of the Woodchurch Local History Society then please come along to this meeting - you will be very welcome

I am saddened to report the death on Thursday 24th November of one of our longest serving members, Arthur E Stroud.. As well as being our Treasurer for 15 years Arthur played a leading role in developing and steering our society. He was perhaps one of our most influential leaders for about 25 years.

Geoff Turner, 01233 860393.



Woodchurch Cottage Flowers

We are an artisan florist and flower grower. We grow and sell the most amazing seasonal English flowers. All grown here at our smallholding in Woodchurch in Kent. We are a small flower farm working with nature and the seasons.

Call or text 07969 449235

www.woodchurchcottageflowers.co.uk

The Nuts go missing again!

Sadly Mr and Mrs Nut have again been taken from their shelter in the planter outside our house on 37, The Green. The weekend before they were taken, we took them indoors and changed their clothes to welcome in the Christmas Celebrations in the village.



Lots of small children around the village regularly enjoy looking at them whilst walking with their parents so if you know what has happened to them or come across them whilst walking around the village - please bring them home. Thank you - Stoo and Judy



Woodchurch Meeting Point

Christmas lunch at The Bonny Cravat

Monday 5 December, 12.30pm

CARM Meeting Points are your local place to drop in, enjoy a cup of tea and a chat, the occasional speaker, activity, or outing, and make friends. £1 voluntary contribution. We meet on the first Monday of the month at Woodchurch Memorial Hall from 10.30am – 12pm.

Everyone is welcome so do drop in or get in touch with CARM on 01233 758122. Christmas lunch is subsidised for members.

We are a local Charity working to reduce social isolation and loneliness. Registered charity no. 1184552
www.carmromneymarsh.org.uk

Ashford Astronomical Society

We have the Ashford Astronomical Society Christmas Quiz on Friday 16th December at 7.30 pm at the Woodchurch Memorial Hall. A evening of trivially entertaining and entertainingly trivial questions. Free entry. Bring drinks and snacks. All welcome but under 16s must be accompanied by an adult.



Six Bells Park

Monday 31 October saw the Six Bells Park residents celebrating Halloween with a party at Six Bells Pub. The best Halloween dressed entrant winner was Dave McCausland and the winner of the best carved pumpkin was Anne Jennings. The next event will be on Friday 9th December when the park residents will join together to light two of the trees leading into the park and sing carols as a community event.



Community Speedwatch

In the New Year we are hoping to restart the Community Speedwatch program in Woodchurch. If you would like more information or get involved please contact Alan on 07798 614785 or contact The HUB.

THE INFAMOUS WOODCHURCH MUMMERS



**ARE PROUD TO PRESENT
"SUCKERS"
OR**

**"T'LL BE ALL BITE ON THE
NIGHT"**

.....CONTAINS ADULT HUMOUR

16th Dec.: The Dukes Head, Hamstreet @ 20:00 Hrs
16th Dec.: The Shepherd & Crook, Burmarsh @ 21:00 Hrs
17th Dec.: The Brewery Yard Club, Rye @ 20:00 Hrs
17th Dec.: Wittersham Social Club @ 21:00 Hrs
23rd Dec.: The Bell, Ivychurch @ 20:00 Hrs
23rd Dec.: The Six Bells, Woodchurch @ 21:00 Hrs

IN AID OF THE



Everything Outside

Bringing New Life
To Your Garden

For A Quick Quote From A Company You Can Trust Call

☎ 01580 766 232 ☎ 07795 465 861

Welcome To Everything Outside

We cover a wide range of services to meet the requirements of our ever-growing client list, if you are looking for a company you can trust to provide a high standard of quality work covering

- ✓ Gardening
- ✓ Garden Design
- ✓ Fencing
- ✓ Clearance
- ✓ Landscaping
- ✓ Hedge Cutting
- ✓ Tree Surgery
- ✓ Digger Work

and much more. Then call our experienced team today on 07795 465 861. To view our full range of services, click on the link below.

Our head office is based in Tenterden, Kent and means we are in the perfect location to proudly service Kent and East Sussex. All our services are tailored to each job we carry out and our team are experience in all aspects of fencing and landscaping services making us your number one choice for all work you require.

Great Work

Great Reputation

Great Price



Design, planning & build services

Now offering full 3d design development for your extension, new build or conversion project. Please call us for an introduction to our design services at our Woodchurch office.

01233 861177 vernacularhomes.com



fab feet Professional Foot Healthcare

www.fabfeethealthcare.co.uk

Delivering high quality Podiatric care in the
comfort of your own home

Providing a reliable and friendly service of professional
treatments for all of your foot ailments:

Call Michelle on:

Tel: 01233 731207

Registered & Insured



O
U
R

S
P
O
N
S
O
R
S

Dolmen Conservation & Joinery Ltd Seasoned Logs, ready to burn

Sustainably sourced logs
delivered to your door

Call Jack on **07804 881461**

for prices and delivery - or visit
The Woodland Centre,
Warehorne Road, Woodchurch
(next to the Rare Breeds Centre)

Tenterden Removals

The Professional Removers in the Weald



Secure Storage at a Competitive Price

To help keep the Newsletter free for
the village please become one of our
sponsors or give a donation if you can.

www.woodchurchhub.uk

or Contact The HUB for more information



Try our professional
Home News
Delivery service

New customer introductory
offers available

Have your paper delivered before you go to work and
read it with your breakfast!

- ✓ Early delivery - before 6.30am (7.30am at weekends)
- ✓ Excellent communication - phone or email ALWAYS responded to
- ✓ Different billing options available
- ✓ All national and local newspapers available to order
- ✓ All magazines available to order
- ✓ Well established reliable company with over 4,400 customers

Place your order today by telephone on
01580 763183

or email us at mail@jackiesnews.co.uk
or go to www.jackiesnews.co.uk/place-your-order



EST. Over 35yrs

**Extensions
General Building
Property Maintenance
Brickwork/Stonework Specialist
Landscaping**

Free Estimates

Chris@cgmbuildersltd.co.uk

www.cgmbuildersltd.co.uk

KENT 
HOLIDAY COTTAGES

+44 (0) 1233 860 293

info@kentholidaycottages.co.uk



WOODCHURCH

SHOP BAR WINE TASTING TOURS

Thursdays to Sundays 11am - 5pm

<http://woodchurchwine.co.uk> tel:01233 860276

You could advertise your company here
from as little as £10 per month



Remedial massage therapy.

Your Local Woodchurch Massage Therapist

- Remedial Massage
- Sports Massage
- Holistic Massage

- Ultrasound Therapy
- Electrotherapy

- Injury Treatments & Rehabilitation
- Rehabilitation Taping/Strapping
- Athletic Taping/Strapping



Bookings - 07799221043

www.musclewhisperer.org.uk

Treatment Room - Little Vale TN26 3QW

musclewhisperer@outlook.com



WE'RE OPEN:
MON - FRI: 08:00 - 17:30
SAT: 08:00 - 12:30

**SO MUCH MORE
IN YOUR LOCAL
COUNTRY STORE**



Of course we sell agricultural parts and machinery.

We also sell outdoor and PPE clothing, alongside hand tools, adhesives, hardware, barn paint and much more...

We're online too: ernestdoeshop.com

Hendon Barn, Woodchurch
Ashford, Kent TN26 3QP
Tel: 01233 224860

 **ernestDOEpower**
where you buy with confidence



Partnered with



Invite you to
Woodchurch on The Green
CHRISTMAS TREE
LIGHTING CEREMONY

and

WOODCHURCH CE SCHOOL
CHRISTMAS MARKET
Friday 2nd December 2022

3pm 'til 6.30pm (*Tree switch on 5pm*)
on The Green, Car Park and in the Memorial Hall

*Raffle tickets now on sale from local distributors and
also available at the Hub and Six Bells - cash only please.*

Lots of fantastic prizes from local businesses. Proceeds to Woodchurch in Bloom.



Support your local museum- you could win a
£50/£30/£20 prize every month.
Draw numbers for 2022/23 are still available
For more information please contact Joyce via
The HUB - enquiries@woodchurchhub.uk or
01233 861381

November 2022 Draw Results

1st	£50	John Smith	334
2nd	£30	Helen Headling	1096
3rd	£20	Sally Short	765

WOODCHURCH VILLAGE DIRECTORY

The village directory has now been updated in
Woodchurch HUB. This is a directory of local:

- Clubs and Societies
- Organisations
- Businesses
- Support and Emergency Contacts



www.woodchurchhub.uk >
[Woodchurch Community](#) >
[Directory of Clubs and Societies](#)

**If you directly support Woodchurch
residents, inclusion in the directory is FREE**

If you are not in it contact The HUB

The Ashford Volunteer Car Scheme provides a door-to-door service for those in the Borough who find it difficult to use public transport because of disability, age or location when trying to reach medical and other wellbeing appointments. Clients of the scheme pay £15 pa membership, £2 per trip administration and 55p per mile for the volunteer to drive from their home to the client, to the destination and home again. Drivers will wait up to an hour and a half at the destination for no extra charge.

We help with all trips we can for example, getting to surgeries, hospitals and even shops for people in our community who cannot use or struggle with public transport. The Ashford Volunteer Car Service is there to meet this need. Please call 01233 633219 between 9.30 and 12.30 any weekday to learn more and to start using the service - it can all be done over the phone!

HOWEVER, did you notice that word 'Volunteer'? The Service is looking for more volunteer drivers to meet the increasing demand. This is especially true in the rural areas. Drivers can choose when during the week they are prepared to be available and even in which area. Furthermore, each trip is offered to them by the Service, and they are at liberty to decline it for any reason. Some drivers take on trips almost every day whilst others may only do two or three a month. It's up to you.

Drivers are reimbursed for their car costs at the rate of 50p per mile when driving to the client and 55p/mile when the client is on board. Drivers are required to have a DBS check which means a visit to the office in Ashford with a number of documents - pretty similar to the identity checks we have all become only too familiar with! If you would like to know more, please pick up the phone us, as above.

Volunteer Centre
Ashford

<https://ashfordvc.org.uk/>