



WOODCHURCH COMMUNITY NEWS

The village community working together

October 2022

Contact us: Telephone 01233 861381 Email enquiries@woodchurchhub.uk Web www.woodchurchhub.uk

OVER 900 COPIES distributed every month in the Woodchurch area

WOODCHURCH Community Calendar



Weekly events:

Saturdays:

Boot Camp 9:00am-10:00am on the Village Green

Mondays:

Pilates 9:00am-10:00am in the Memorial Hall

Tai Chi and Qigong 9:45am - 11:45am at the S&G Community Centre, Lower Road

Knit and Natter 2:00pm - 3:30pm in the Pop In Lodge

Beavers 6:00pm-7:00pm in the S&G Community Centre, Lower Road

BodyTone 6:15pm-7:00pm at the Memorial Hall

BodyFlex 7:15pm-8:00pm at the Memorial Hall

Scouts 7:30pm-9:00pm in the S&G Community Centre, Lower Road

Tuesdays:

Pilates 9:00am-10:00am, 10:15am-11:15am and 6:00pm-7:00pm in the Memorial Hall

Yoga 10:00am-11:15am in the Pop In Studio

Coffee Morning 10:00am-12:00pm in All Saints Church

Little Leaves Forest School 10:00am - 12:00pm under 5's Play Group based in Woodchurch

Community Warden 1:00pm-3:00pm in the HUB

Puzzle Club 2:00pm-4:00pm in the Pop In Lodge

Blend Youth Cafe 3:00pm-5:00pm in All Saints Church

Cubs 6:00pm-7:00pm in the S&G Community Centre, Lower Road

Wednesdays:

Pilates 9:00am-10:00am in the Memorial Hall

Museum Volunteers 9:30am-12:00pm at the Museum

Yoga 10:00am-11:15am in the Pop In Studio

Over 60s Pop-In 2:00pm-4:00pm Tea and coffee and boot fair marquee at the Jean Mealham Pop-In

Rainbows 5:00pm-6:00pm in the S&G Community Centre, Lower Road

Fish and Chips 4:30pm-7:30pm in the Village Car Park

Brownies and Guides 6:00pm-7:15pm in the S&G Community Centre, Lower Road

Boot Camp 6:15PM-7:15PM on the Village Green

Thursdays:

Art Society 10:00am-1:00pm at the Memorial Hall

Margaret Morris Movement 2:15pm-3:15pm in the S&G Community Centre, Lower Road

BodyFlex 6:15pm-7:00pm at the Memorial Hall

BodyTone 7:15pm-8:00pm at the Memorial Hall Annexe

Badminton 7:00pm-11:00pm at the Memorial Hall

Explorers 7:30pm-9:30pm in the S&G Community Centre, Lower Road

Previous editions of the Newsletter can be found on The HUB Web site
www.woodchurchhub.UK



Other Events:

Sat 1st **The Drawtones Concert** 7:00pm at All Saints Church

Sun 2nd **Table Top Sale** morning at the Pop-In Lower Road
Morning Worship 11:00am at All Saints Church
Classic Car meet 12:00pm at the Bonny Cravat
Evening Prayer 2:30pm at All Saints Church

Mon 3rd **A28 Ashford Road - Road Closure at High Halden until 8th October. Diversion in place**
CARM 10:30am to 12:30pm in the Memorial Hall
WLHS - "History of Nursery Rhymes" 7:30pm in the Memorial Hall

Wed 5th **Six Bells Quiz Night** 7:00pm in the Six Bells

Thu 6th **Parish Council Meeting** (Septembers postponed) 7:00pm in the Memorial Hall Annexe

Sat 8th **Memorial Hall Quiz Night** 7:00pm in the Memorial Hall

Sun 9th **Newspaper Collection - Scouts**

Holy Communion 11:00am at All Saints Church

Tue 11th **WI Annual Meeting** 7:15 in the Memorial Hall

Wed 12th **Borough Councillors Surgery** 11:00 in The HUB

Thu 13th **Public Meeting - Proposed land gift behind Kirkwood Avenue by CS Developments** 6:30pm in the Memorial Hall Annexe

Sun 16th **Morning Worship** 11:00am at All Saints Church

Mon 17th **A28 Ashford Road - Road Closure at High Halden until 22nd October. Diversion in place**

Sat 22nd **"Woodchurch Yard Together"** all weekend at All Saints Church

Sun 25th **10 & 5 Mile Running event** from 8:00am around the village. **Front Road and Bethersden Road Closed**
Holy Communion 11:00am at All Saints Church

Thu 27th **A28 Ashford Road - Road Closure at High Halden until 17th November. Diversion in place**

Parish Council Meeting 7:00pm in the Memorial Hall Annexe

Fri 28th **Ashford Astronomical Society "The Sun - A closer look"** 7:00pm in the Memorial Hall

Sat 29th **"Spooktacular Halloween Party"** at the Six Bells

Sun 30th **Group Service** 11:00am at All Saints Church

The Full Community Calendar can be found at

www.woodchurchhub.uk/community-calendar





WOODCHURCH PARISH COUNCIL • *UPDATE* •

Land between, 82-120 Front Road (Gladman Developments)

The Planning Inspectorate based in Bristol, will be holding a virtual appeal hearing on Gladman Developments Ltd., planning application 21/01284/AS at 10am on Monday 4th October. The Inspectorate have been requested to allow your Parish Council to present their objections at the appeal hearing. The application is described as "Outline planning application with all matters reserved except for access into the site - For the erection of up to 40 dwellings (including affordable housing), structural planting and landscaping, informal public open space and children's play area, surface water flood mitigation, vehicular access point and associated ancillary works." See master plan below. Your Parish Councils objections have been published, separately forwarded to the Planning Inspectorate and included in ABC's "reasons for refusal" Appeal Statement, as published on Ashford Borough Councils Public Register Website ABC Planning Register View. To view all the information please search for 21/01284/AS under Planning Applications.



How to contact your Parish Council

In person: By talking to one of your councillors - details on the Parish Council Web site

By email: clerk@woodchurch-pc.gov.uk

By phone: 01233 861381

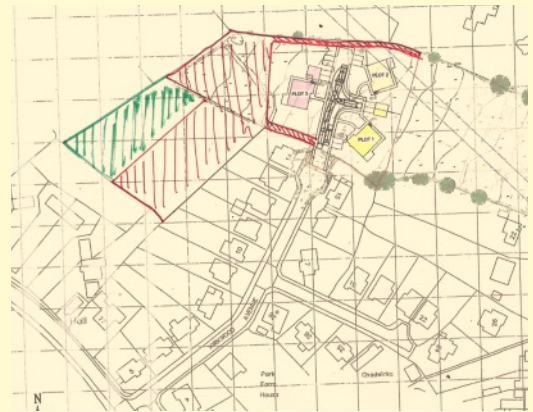
Through The HUB: Place your correspondence in a sealed envelope marked "Parish Council" and deliver to The HUB

By post to: Woodchurch Parish Clerk, c/o Woodchurch HUB, Front Road, Woodchurch, Kent, TN26 2PA

Through the contact form on the Parish Council Web site: www.woodchurchhub.uk/parish-council/

Kirkwood Avenue Development

The Parish Council was recently contacted by C.S. Developments in relation to gifting at no cost to the Village, the open fields and ecological lands associated with planning application 21/02142/AS, North of 14 & 15 Kirkwood Avenue i.e., lands within Woodchurch's conservation area. A fact finding site visit was consequently undertaken on Monday evening 19th September, by members of the Parish Council and C.S. Developments, to better understand the proposal. C.S. Developments have also agreed to attend a public meeting, to be held on the 13th October, when they will present their planning proposal to all Woodchurch parishioners. No decision will be made by the Parish Council on this land proposal until after the public meeting. The Parish Council consequently encourages all interested village residents to attend this important event. Look out for the posters and further on-line information.



Upcoming roadworks in and around Woodchurch Information from KCC and one.network

Roadworks - A28 Ashford Road, High Halden

3rd October - 8th October 2022 AND

17th October - 22nd October AND

27th October - 17th November

Closure in force: Road Closure

Description: Carriageway resurfacing and Highways Improvement. Diversions in force.

Road Closure - Front Road and Bethersden Road

23rd October 2022 08:00 - 12:00

Closure in force: Road Closure

Description: Woodchurch 10 & 5 Mile Run

Roadworks - Ashford Road, Hamstreet

22nd October - 6th November 2022

Closure in force: Road Closure

Description: New housing development works between Hamstreet Primary Academy and St Marys Close

Roadworks - Plurenden Road, Woodchurch

27th October - 20th October 2022

Closure in force: Road Closure

Description: Utility repairs and maintenance works in the vicinity of Harlakenden Farm

WOODCHURCH SURGERY UPDATE

While I was thrilled to have August under our belts, I had no idea what September would have in store. A new Prime Minister and the death of our Queen. It was quickly announced that the 19th would be a national day of mourning and although I really didn't want any interruptions to our service, it was very apparent that the national mood was to spend the day in remembrance. I think we did the right thing in closing as the whole country really did just shut down. Harrods was shut and even the airspace over London closed down to reduce noise and distraction... Perhaps we should all try and shut off from outside distraction from time-to-time to reset.

My wife once received a trophy from the Queen and, like lots of people that have met her, found her presence to be awesome. What was she like? "Just really nice and really little...". We spent the day watching the service while pickling beetroot and making curry. Beets are said to help lower blood pressure, reduce heart disease and help with both gut and brain health - so I love a beet!



The new Health Secretary, Therese Coffey, has announced plans to tackle all that is inefficient with the NHS. (I hope that she remembers that I bought her a pint of Guinness when, by chance, I was sat next to her at Twickenham watching England v Ireland rugby last March.) She has announced a pot of £500 million that will help social care for people being discharged from hospital. Like all announcements there is little detail.

In our area we really struggle with delivering care packages, especially when 2 carers are needed up to four times a day. This leads to frail (usually) people lingering in hospitals for many weeks where they are massively vulnerable to infections and usually get weaker as the staff focus on sicker patients. The problem is that throwing money at a problem is not the only part of the solution - we also need to inspire people to be carers and do the valuable care for people. It's not always glamorous but it is so essential to enable people to remain at home safely.

We still have positive Covid tests in our community, although as a nation I feel that we have tried to put it out of our minds. At the Surgery we are still wearing masks, however only those that have fevers or coughs are encouraged to wear them in return. Our Flu clinics are running for the next few weekends and we are still taking bookings. We still do not have allocation for Covid vaccines for the next cohort so please book a jab if you receive a letter or text from 119. We cannot correct any errors for Covid jabs done elsewhere so please don't ask us but contact 119. When we know more we will shout out...

We do not have any new staff members this month although we are expecting a new book-in touch screen to be installed for October. It is not a substitute for human contact though so please see it as an addition rather than a replacement for a real human being! Very soon we will be advertising for another member of the dispensary to join us and bolster the team.

With best wishes on behalf of the Surgery, Jack Hickey - GP

2022 Poppy appeal Volunteers urgently needed. Can you help?

With the 2022 poppy appeal fast approaching, more house to house volunteer collectors are needed so that the whole village gets a visit.



The few collectors did a fantastic job last year visiting a lot more houses than I expected but an awful lot of the village went without.

I am hoping that you can step forward and join the band of existing collectors and I hope those already collecting will be available again this year. If you think you can help out then please get in contact with me and I will gladly tell you more about what's involved.

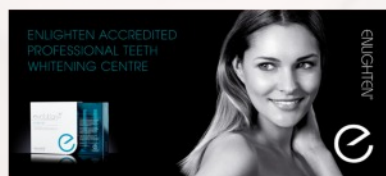
You can contact me on [07767 378649](tel:07767378649)
please leave a message if I am at work [01233 860023](tel:01233860023)
chris.dudman@btinternet.com
86 Lower road - and I'll make you a cuppa.....

Boldshaves Garden

Boldshaves Garden will close for the 2022 season at 6pm on Sunday, 9 October, and will re-open in March 2023. Please keep an eye on our website for details of other events here next year. www.boldshaves.co.uk

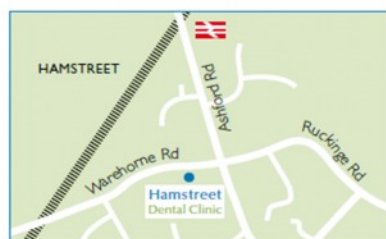
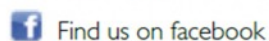
Surgery Opening Hours

Monday to Friday 9am to 5pm



Where to find us...

Hamstreet Dental Clinic
Warehorne Road
Hamstreet
Kent TN26 2JJ



Tel: 01233 733848

Email: hamstreetdentalclinic@gmail.com



All Saints Church



Dear Friends,

I hope you are all keeping well, as we move into Autumn. I'm sure that as the nights draw in and temperatures cool, many of us will be concerned about the Winter ahead. Please could I encourage you to have conversations with friends and neighbours; especially those who might be struggling to cope. In each village community we will be working together to support those in need.



In Woodchurch we are blessed to have a very generous benefactor who has identified funds to help support those who are struggling. The church has used this funding to set up our "here to Help" scheme. Please do not suffer in silence; I am particularly concerned that older people and families should not be too cold this Winter. We are planning "warm days" in church when we will have our heating on and warm food to keep you going - bring along board games, jigsaws or craft activities to share with others ...or a good book. We will be publicising when this is up and running. We will also be able to support anyone in need with shopping vouchers or the foodbank service; this can be done in a completely confidential way - please watch out for details. We are also thinking about having warm clothes or blankets which can be collected from the church.

Please let me know if you or someone you know needs help over the next few months.

Every Blessing, Reverend Sue

revsurerose@outlook.com 01233 820266

Your legacy for the future

By the time this October edition is launched we may have already had our fundraising jazz event in All Saints on 1st October, however, if you are reading this before then, please come on down.

Maintaining our church within our village is expensive but vital. These last weeks have shown us how important it is to have a centre for faith within our community and a focus for all our seasons in life. Some of you will have been baptised in All Saints, some have relatives buried here. Every year people who have moved away from Woodchurch return to search for their ancestry and remember those that have been laid to rest in All Saints. What they discover is a wonderfully maintained church yard, all managed by volunteers. However now the building needs attention too and if it is to be there for you and your future families we need your help. Please support us through your giving. Please come to our events and if you are able to give more actively the Widow's Mite donation programme costs less than the price of a monthly magazine. Our refurbishment programme looks daunting but every house starts with someone laying the first brick, and then a belief that the job can be finished. If you want All Saints to remain a presence in our village, please support us.

IN MEMORIAM

QUEEN ELIZABETH II

1926 -2022



There is a book of condolences in the Chapel of our Church for you to express your thoughts and memories at this very sad time of the passing of our most gracious Monarch.

God save the King

Her Majesty Queen Elizabeth the Second died on Thursday 8th September, and her funeral took place on Monday 19th September.



Between these dates, our nation had a time of mourning and we had Books of

Condolence in our village churches. We have also remembered the late Queen in our prayers and services during this time.

I know that many people have felt profoundly moved by the Queen's passing, and have memories of many special occasions during her lifetime, and for some, moments when they were fortunate enough to meet her.

We give thanks for a long life of service to this country. For her dedication to duty and the diligence shown over such a long reign. For the interest shown in the many many people she met and corresponded with. For her love of her family. Most of all we give thanks for the Queen's faithfulness. For her devotion to God and for the example she gave to us all as a person who lived out her Christian values.

Rest in Peace Your Majesty.

Gracious God, we give thanks
for the life of your servant Queen Elizabeth,
for her faith and her dedication to duty.
Bless our nation as we mourn her death
and may her example continue to inspire us;
through Jesus Christ our Lord. Amen.

Pete Allen, the speaker at our September meeting, held us all enthralled for almost an hour with his enthusiastic and well delivered talk entitled "Mr. Garrick's Fireside - A Personal History of the Theatre Royal, Drury Lane"; personal on account of the fact



that in their youth, Pete and his friend, Chris (the son of Susan Hampshire), both aspiring actors, actually worked in hospitality at the venue. Pete told the tale of how at the 1986 Royal Variety Performance attended that year by the Queen Mother, he and Chris cheekily popped into the second royal box to watch Ken Dodd on stage, while waiting for the interval to serve champagne. Ken Dodd was famous for not abiding to any set timing for his act and, as usual, he was overplaying his allotted time. Thus the boys were lulled into a false sense of security and so when Ken unexpectedly announced "And that's it!", they were obliged to beat an extremely hasty retreat back to work. They were, therefore, totally unprepared to meet three very large and very angry and, possibly, over zealous, security guards fully prepared for action in the corridor outside the box. The incident certainly served to show them the importance of being in the right place at the right time!

The theatre's main claim to fame, apart from its long standing connection with royalty, and, from the late 19th century, the sheer size of the stage, which has allowed a sinking ship, a train crash and even a helicopter landing on stage in the production of Miss Saigon, (1989-1999 the theatre's longest running show), is that it is the oldest theatre (Grade 1 listed) still in continuous use in the world. Older theatre buildings in Greece do exist, but they are not now used for entertainment. There have actually been four theatres on the same site, but not one of them had a door onto Drury Lane, instead the lane is behind the actual theatre. The building faces Catherine Street (previously known as Bridges Street). The earliest theatre on the site was commissioned by Charles 11 and built by Thomas Killigrew in 1663. Nell Gwyn, (reputedly Charles's mistress) was one of the first actors to tread the boards at the theatre and many have since followed in her footsteps, including David Garrick, Richard Brinsley Sheridan, (both actor/managers), Joseph Grimaldi, Sarah Siddons & Robert Baddeley, Eliza Povey, (first female principal boy in a pantomime), Dan Leno, Marie Lloyd, Dame Ellen Terry & Henry Irving, John Mills, Rex Harrison, Julie Andrews, Ruthie Henshall and Craig Revell Horwood to mention just a few. It was destroyed by fire in 1672, having successfully, due its west end situation, avoided the Great Fire of London in 1666. The theatre was then re-built in 1674 by Christopher Wren and was demolished in 1791 and re-built in 1794 under Richard Sheridan's management. This third theatre burnt down in 1809, despite it being the first to have a fire safety curtain. The present and fourth theatre opened in 1812 and is currently owned by the Really Useful Group (Andrew Lloyd Webber). It has recently undergone a £60 million transformation.



David Garrick was the manager/actor from 1747 and he implemented many reforms which are still apparent in our modern theatre. His successor Richard Sheridan (remembered more as a playwright than a manager) oversaw the replacement of a much larger incarnation in 1794. Unfortunately, for Sheridan, this grand new edifice was burnt to the ground just 15 years later in 1809, despite the installation of the world's first safety curtain. Sheridan, having decided that as the fire was too far advanced, any action would be useless, was famously reported to have said, while observing the fire's progress from the "Nell of Old Drury" pub across the road "A man must surely be allowed to take a glass of wine by his own fireside". However, many years later George Hoare, manager of the theatre from 1958-1982, who also offered tours of the theatre to the public, would attribute this quote to Garrick, the highly regarded manager who preceded Sheridan. He did this in order to diminish the importance of Garrick as a manager in the eyes of the public, as surely it would be considered a strange thing for a good manager to be drinking wine whilst his theatre burned down around him. It is thought that thereby, perhaps, Hoare would be able to enhance his own importance as a modern manager of the theatre and make his own light shine all the more brightly!

Thank you, Pete, for such an excellent, informative talk. I am sure we will all look out at our next matinee for the theatre's most famous ghost, the Man in Grey in his tricorne hat!

Our next meeting is scheduled for Tuesday, 11th October when Heather Carolan from Givaudan will be with us to talk about "The History of Perfume". The competition will be "A Hallowe'en Recipe". Do join us if you can.

What's happening at ALL SAINTS CHURCH?

COMMUNITY COFFEE MORNINGS

Come along on Tuesdays to our warm welcoming church between 10 am - 12pm.

Homemade cakes, chat and laughter. Free secondhand bookstall and play area for children.

Visit the new CRAFT STALL stocked with beautiful locally made craft items



CHRISTMAS TREE FESTIVAL

9-11 December.

Save the date of this popular event. Even bigger and better community event this year. Refreshments, entertainment and activities all weekend. Not forgetting Santa's Grotto! Look out for more details next month.

Vote for your favourite decorated tree!

We are looking for musicians to play during the weekend.



William Parsons

A message of condolence from Canada

I grew up in Newfoundland and Labrador and taught at Woodchurch School Year Six in 2008. It was a good experience and living in Woodchurch was a highlight as I enjoyed attending All Saints church and spending time at the Six Bells with local villagers. I have returned on a number of occasions and maintained contact with friends and acquaintances.



My Mother and Father were committed Monarchists and thus I felt comfortable working and living in England. They would have been saddened to learn of the Queen's passing as I was. I therefore pass on my sincere condolences to the Queen's family and hope that I can return as quickly as possible.

Yours sincerely, William Parsons



Memorial Hall Coffee Morning

The next coffee morning in aid of The Memorial Hall will be held at the Memorial Hall on Saturday 5th October from 10 am to 1 pm.

WOODCHURCH MEMORIAL HALL

QUIZ NIGHT

**RAFFLE
GREAT
PRIZES**

Saturday 8th October

7 for 7.30pm start - Teams of up to 6

£5 per person - Prize for winning team

To book a table phone Joy Rubie 01233 861483

Please feel free to bring your own food and drink.

Tea, Coffee and Cakes will be available during the interval at a cost of £3

"Let your light shine..."



Woodchurch CE Primary School

Is your child starting school in September 2023?



Come and visit us for a personalised tour of our exciting and engaging learning environment throughout October and November.

We also have an open evening, with presentation and an opportunity to tour, on Thursday 3rd November at 6pm.

Please call 01233 860232 to book.

COMPASSION HOPE FORGIVENESS THANKFULNESS LOVE



Woodchurch Church of England Primary School is a one form entry primary school located at the heart of our beautiful village community. We are home to approximately 165 children and are passionate about ensuring that all children and adults flourish in our care. We'd love the opportunity to give you a tour and meet you and your child.

01233 860232

office@woodchurch.kent.sch.uk

Bethersden Road
Woodchurch, Ashford, TN26 3QL
www.woodchurch.kent.sch.uk



COMPASSION HOPE FORGIVENESS THANKFULNESS LOVE

[The Six Bells Inn](#)

Welcome October.....new month, new chapter, new page and new wishes.

The nights are drawing in and the log fires are alight and the autumn colours are on the trees and winter is around the corner.



Our new warming winter menu has been prepared and finalised by our Chef with wonderful aromas filling the air. Our festive menu is now ready for you to peruse and your taste buds will be tingling. Sunday Roasts are a speciality and the homemade Yorkshire puddings and gravy are simply marvellous.

The cosy, friendly atmosphere offers a warm welcome to our regular and new customers. We can guarantee once you have experienced the individual character of our family run, country freehouse, where we pride ourselves on our well kept real ales and excellent prices, you will feel like you are coming home every time you walk through the door.

We have our quiz night Wednesday 5th October where you can expect the unexpected so make sure you call or send a message to book your table.

Our "Spooktacular Halloween Party" Saturday 29th October is a night that you will not want to miss with our absolutely "fa-boo-lous" spooky dishes on the menu and drinks served with a "Boo from our Crew" from behind the bar. Additional "broomstick" parking places and a "black cat" sitting service will also be on offer.

Woodchurch is magical place and coming to "The Bells" gives you the opportunity to enjoy great food, good beers and wonderful company.

With Love as Always
Emily and All at "The Bells"

[Margaret Morris Movement](#)

Margaret Morris Movement - Gentle exercise for the over 50's will start again on Thursday 29th Sept and then every Thursday after that at the Scout Community Hall Lower Road, from 14:15 to 15:45. If you would like to join us please contact me Alannah on [01233 770 607](tel:01233770607).

[The Woodchurch 10 & 5 Mile Running Event](#)

Date: Sunday 23rd October 2022

A prior warning of a road closure on a sleepy Sunday morning... From 8am on Sunday 23rd October the village will be awash with runners until mid day at the latest.

Please show your support for this event that raises generous funds for our Primary School, by being patient and accommodating of the usual road closure and minimising vehicle presence on the roads. Front road only will be closed from its junction with Lower road up to the cross roads junction with Redbrook Street.

It's usually open again by 11:30am, latest 12pm

The event includes a 1mile kids run on the village green. Please visit nice-work.org.uk for full details.

Please contact Ben Hebblethwaite on [07967 817327](tel:07967817327) should you wish to volunteer for helping marshal the event. It's a fantastic way to enjoy the event and act as ambassadors for our village.

Brownies

[Brownies and Guides](#)

Guides

Woodchurch Brownies and Guides. Meet at 6 pm till 7.15 pm on Wednesday evenings.

This term we are taking part in a sponsored sleep out in aid of porch light. We will start the evening by making shelters so hoping it's a dry night.

Brownies are working on an autumn challenge with games, crafts and cooking challenges.

If you would like to visit to see what we get up to then you are very welcome. Open to girls 7 to 14.

If you want to know more
Call 01233 861236 evenings

[Yoga with Penny](#)

Yoga with Penny at The Studio, The Jean Mealham Centre, 10-11.15 am Tuesdays & Wednesdays.

Contact [07971 888404](tel:07971888404)
or pennysharingyoga@gmail.com for details.

Simple Kent Funerals

Relaxed, flexible, imaginative, economical, caring

Applefield Cottage, Redbrook Street, Woodchurch TN26 3QS

Call Toby on 07806 613297 • www.simplekentfunerals.co.uk

We work in an eco-friendly and environmentally-sustainable way and are certified as a net carbon neutral business

Congratulations to Shirley and Clive Looker

Shirley and Clive being presented their Civic award from Ashford Mayor, Jenny Webb, for their many years of community volunteer work at The Jean Mealham Pop-In Centre and around the village.



Ledge Fest at the Jean Mealham Centre raises over £1,000 to help Oli's fight against his brain tumour which he has called "Jerry"

Ledge Fest was INCREDIBLE! The day was filled with laughter, smiles, dancing, eating, great music and LOVE

Huge thank you to Oli's fight against Jerry. Jerry's chief fundraiser Zoe Hopkins - for making my idea become a reality, and all the volunteers who manned the Chocolate Tombola including Chris Mersom and Nicky.

A massive thank you to Richard at the Jean Mealham Centre for the loan of his amazing space in Woodchurch, for supporting the day in so many ways. Also Tim our wonderful sound engineer!

To our Mayor, Jenny Webb and Cllr Ian McIntock for joining Oli and spending some time with us.

For all of the musicians who gave up their time. The Music of Ian Ingles, Robin Mack, Mia Carmen, Amber Mahony and Jack from Atomic Ginge, Liam Cohen and The Steelworks Band. Our DJs Stuart Ebbs and DJ Reckit from RV Discos and Equipment hire and Ben Hammond. To Stuart Weller - "Magic Up Close" for delivering some epic tricks.



It's time for the Village Big Autumn Plant Makeover!

A special 'Thank you' to the Carnival Committee for the £300 grant for our Autumn planting this year.

We will be meeting on Saturday 15th October, 10.30am on the Green.

Do come along and say hello or help us refresh the plants around the Village.

Christmas Tree lights switch-on and Christmas Market

Woodchurch in Bloom, in association with FOWSA (Friends of Woodchurch School Association)
Invite you to

Christmas Tree on the Green Lighting Ceremony
and
Woodchurch CE School Christmas Market

Friday 2nd December 2022, from 3pm

Woodchurch Fayre

Village Craft & Home Produce Show

is returning to our Village!

First held over 130 years ago by the then Gardening Society.

(Proceeds to All Saints Church)

combined with



Friends Of Woodchurch School Association

Woodchurch CE School Fete

On

Saturday 8th July 2023

WoodchurchYardTogether ("WYT")

Our next volunteer gardening weekend in the Churchyard is:

22nd & 23rd

October



Keeping in Touch:

Email:

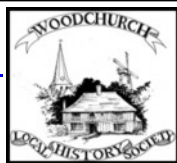
woodchurchYardTogether@btinternet.com

Or follow us on Facebook

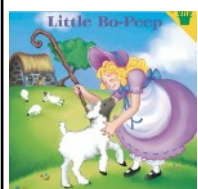


Search: 'WoodchurchYard Together'

Woodchurch Local History Society
(WLHS) - Monday 3rd October, 7:30pm.



On Monday 3rd October, 7:30pm we will have a meeting in the Memorial Hall and we have invited Dr John Reuther to give us a talk entitled 'A History of Nursery Rhymes'. Have you ever wondered about the origins of our most popular nursery rhymes? John Reuther will explain that many nursery rhymes are based on historical fact. For instance, Baa Baa



Black Sheep is associated with taxation in previous centuries and that Ring a Ring O'Roses can be traced to the Great Plague. And how did Little Bo Peep Lose her Sheep. This talk will be very informative but because many nursery rhymes can have a dark history the evening is probably best suited for adults. It will draw substantially upon knowledge of British history.

Our Monday November 7th meeting will also be held in the Memorial Hall and we will welcome Delia Taylor to give us an illustrated presentation entitled 'The Role of ENSA during World War 2'. ENSA, of course, was an organisation set up during wartime to entertain our servicemen, usually abroad, with shows employing comedians, magicians and singers. Servicemen often referred to ENSA as 'Every Evening Something Awful' so we can expect some amusing video clips from Delia.

Visitors are very welcome and asked to pay £3 at the door for each of the two talks. Non-members can join the society for £5 which will include all the presentations up to Christmas.

If you would like more information contact Geoff on
01233 860393.

Woodchurch Village Life Museum

Woodchurch Museum will be closing for the 2022 season on Sunday 30th October so there is still time to come and visit. Comments from recent visitors have been very uplifting and rewarding for our volunteers.



'Fantastic memoirs of village life' - Sandra from Bicester
'A stunning snapshot into recent history rarely seen' -
Leon from Leicester
'Amazing collection' - Pam from Ashford

Come and visit - hopefully you'll agree with our visitors. We are open each weekend 10 am - 4pm until the end of October or contact enquiries@woodchurchheritagetrust.uk and we'll open up at other times, especially for small adult groups or school classes.

WOODCHURCH PLAYERS

Ghosts at the Grange

Tickets are now available for our autumn production 'Ghosts at the Grange'. Rehearsals are well underway and the Players are looking forward to performing their autumn play for the first time in two years! Please come along and support us. 'Ghosts at the Grange' is a comedy 'whodunit'. How do you expose the guilty party, when the only witnesses are two ghosts who haunt The Grange?



Presents

**GHOSTS
AT THE GRANGE**

by Karen Doling
Published by Lazy Bee Scripts
Directed by Ella Parmee

**14th & 15th
October 2022**

Woodchurch Memorial Hall
Front Road, Woodchurch, Ashford, TN26 3PA

Tickets available at: WoodchurchPlayers.co.uk

Box Office: 01233 861 381

Tickets on-line at www.woodchurchplayers.com
Or book in person call in at The Hub

Tickets cost £10 each.

Thank you also to all who turned up to audition for our January 2023 pantomime 'Snow White & the seven dwarfs', I think we had a record turnout. Thank you to our director Kim Parmee, assisted by Emma Priest (who has directed many of our pantomimes in the past). Now comes the hard work, production meetings, to discuss staging, sound and lights, choreography, costumes, music and front of house. That's before the cast even start rehearsing and learning lines!

Supporting The HUB

The HUB is a not-for-profit organisation that exists to help support the residents of Woodchurch, the village clubs and societies and also village businesses. It is managed entirely by volunteers and is funded by Newsletter advertising and voluntary donations. If you would like to help support The HUB then please go to The HUB web site and click the the "Donate" button. www.woodchurchhub.uk

Everything Outside

Bringing New Life
To Your Garden

For A Quick Quote From A Company You Can Trust Call

☎ 01580 766 232 ☎ 07795 465 861

Welcome To Everything Outside

We cover a wide range of services to meet the requirements of our ever-growing client list, if you are looking for a company you can trust to provide a high standard of quality work covering

- ✓ Gardening
- ✓ Garden Design
- ✓ Fencing
- ✓ Clearance
- ✓ Landscaping
- ✓ Hedge Cutting
- ✓ Tree Surgery
- ✓ Digger Work

and much more. Then call our experienced team today on 07795 465 861. To view our full range of services, click on the link below.

Our head office is based in Tenterden, Kent and means we are in the perfect location to proudly service Kent and East Sussex. All our services are tailored to each job we carry out and our team are experience in all aspects of fencing and landscaping services making us your number one choice for all work you require.

Great Work

Great Reputation

Great Price



Design, planning & build services

Now offering full 3d design development for your extension, new build or conversion project. Please call us for an introduction to our design services at our Woodchurch office.

01233 861177 vernacularhomes.com



fab feet Professional Foot Healthcare

www.fabfeethealthcare.co.uk

**Delivering high quality Podiatric care in the
comfort of your own home**

Providing a reliable and friendly service of professional treatments for all of your foot ailments:

Call Michelle on:

Tel: 01233 731207

Registered & Insured



O
U
R

S
P
O
N
S
O
R
S



Nicholls Restores

Antique furniture restorer & Wood finishing specialist



01233 860130 - nichollsrestores@btinternet.com

Tenterden Removals

The Professional Removers in the Weald



Secure Storage at a Competitive Price

To help keep the Newsletter free for the village please become one of our sponsors or give a donation if you can.

www.woodchurchhub.uk

or Contact The HUB for more information



**Try our professional
Home News
Delivery service**

**New customer introductory
offers available**

Have your paper delivered before you go to work and read it with your breakfast!

- ✓ Early delivery - before 6.30am (7.30am at weekends)
- ✓ Excellent communication - phone or email ALWAYS responded to
- ✓ Different billing options available
- ✓ All national and local newspapers available to order
- ✓ All magazines available to order
- ✓ Well established reliable company with over 4,400 customers

**Place your order today by telephone on
01580 763183**

or email us at mail@jackiesnews.co.uk
or go to www.jackiesnews.co.uk/place-your-order



07944 940 182

EST. Over 35yrs

**Extensions
General Building
Property Maintenance
Brickwork/Stonework Specialist
Landscaping**

Free Estimates



Chris@cgmbuildersltd.co.uk

www.cgmbuildersltd.co.uk

KENT 
HOLIDAY COTTAGES

+44 (0) 1233 860 293

info@kentholidaycottages.co.uk



WOODCHURCH

SHOP BAR WINE TASTING TOURS

Thursdays to Sundays 11am - 5pm

<http://woodchurchwine.co.uk> tel:01233 860276

You could advertise your company here
from as little as £10 per month



Remedial massage therapy.

Your Local Woodchurch Massage Therapist

- Remedial Massage
- Sports Massage
- Holistic Massage

- Ultrasound Therapy
- Electrotherapy



- Injury Treatments & Rehabilitation
- Rehabilitation Taping/Strapping
- Athletic Taping/Strapping

Bookings - 07799221043

www.musclewhisperer.org.uk

Treatment Room - Little Vale TN26 3QW

musclewhisperer@outlook.com



WE'RE OPEN:
MON - FRI: 08:00 - 17:30
SAT: 08:00 - 12:30

**SO MUCH MORE
IN YOUR LOCAL
COUNTRY STORE**



Of course we sell agricultural parts and machinery.

We also sell outdoor and PPE clothing, alongside hand tools, adhesives, hardware, barn paint and much more...

We're online too: ernestdoeshop.com

Hendon Barn, Woodchurch
Ashford, Kent TN26 3QP
Tel: 01233 224860

 **ernestDOEpower**
where you buy with confidence



Support your local museum- you could win a £50/£30/£20 prize every month.
For more information please contact Joyce via The HUB - enquiries@woodchurchhub.uk or 01233 861381

September 2022 Draw Results

1st prize	£50	Roy Sharp	554
2nd prize	£30	Amy Felstead	395
3rd prize	£20	Wendy Woosey	724

WI Christmas Market at The Memorial Hall and Annexe Saturday 3rd December 2:00-4:00pm



Would you like to have a stall at our market?
If so, please contact Josie on josie.mackie@btinternet.com or 860363

Stalls are £10 and will only be confirmed upon payment.
Payment should be made by Friday 18th November.

Ping Pong Club

There is a weekly 'PING PONG' Club starting at Shadoxhurst Village Hall (TN26 1HZ). The first session will be on Tuesday 27th September 10am - 12noon (£2 per session includes refreshments). With two full sized table tennis tables and plenty of spare bats & ping pong balls we are set up ready for you to play. Fitness and fun for all ages and abilities. For more information call Hannah 01233 733653 / 07963 717063

Scout Group Paper Collection

Woodchurch Scout group collect paper in the village on the second Sunday of every month. Please have your paper outside your property, visible from the road, by 9am. The proceeds from this help to run the mini bus which allows the scout group to get about for activities.



Woodchurch Cottage Flowers

We are an artisan florist and flower grower. We grow and sell the most amazing seasonal English flowers. All grown here at our smallholding in Woodchurch in Kent. We are a small flower farm working with nature and the seasons.



Call or text 07969 449235

www.woodchurchcottageflowers.co.uk

Weekly calendar events sent directly to your email



Did you know that you can have the village calendar events sent directly to your email each week. If you would like to automatically receive the most up-to-date village events please email enquiries@woodchurchhub.uk or contact The HUB.



In Memoriam Queen Elizabeth II 1926 - 2022

WOODCHURCH CARNIVAL

After the very sad news of our Monarch, Queen Elizabeth II passing on Thursday, 8th September it is with much pride that the 2022 Carnival Committee can inform you that with funds made from the event we have purchased on behalf of the community an oak carved plaque marking our remarkable Sovereign's 70 years on the throne. This is now a permanent fixture on our Beacon on The Green (picture above) and will be a constant reminder of this significant milestone in the history of our Country, whilst celebrating a truly remarkable Queen's Platinum Jubilee Carnival Day for us all in our village.

God Save the King

Jubilee plaques on The Green

The Parish Council would like to give big thanks to the village resident who donated the cast Heritage Jubilee plaque (below) and also to the Woodchurch Carnival Committee for donating the splendid carved oak Jubilee emblem plaque (left) - both of which are now proudly displayed on the village beacon.

