



WOODCHURCH COMMUNITY NEWS

The village community working together

September 2022

Contact us: Telephone 01233 861381 Email enquiries@woodchurchhub.uk Web www.woodchurchhub.uk

OVER 900 COPIES distributed every month in the Woodchurch area

WOODCHURCH Community Calendar



Weekly events:

Saturdays:

Boot Camp 9:00am-10:00am on the Village Green

Mondays:

Pilates 9:00am-10:00am in the Memorial Hall

Tai Chi and Qigong 9:45am - 11:45am at the S&G Community Centre, Lower Road

Knit and Natter 2:00pm - 3:30pm in the Pop In Lodge

Beavers 6:00pm-7:00pm in the S&G Community Centre, Lower Road

BodyTone 6:15pm-7:00pm at the Memorial Hall

BodyFlex 7:15pm-8:00pm at the Memorial Hall

Scouts 7:30pm-9:00pm in the S&G Community Centre, Lower Road

Tuesdays:

Pilates 9:00am-10:00am, 10:15am-11:15am and 6:00pm-7:00pm in the Memorial Hall

Coffee Morning 10:00am-12:00pm in All Saints Church

Little Leaves Forest School 10:00am - 12:00pm under 5's Play Group based in Woodchurch

Community Warden 1:00pm-3:00pm in the HUB

Puzzle Club 2:00pm-4:00pm in the Pop In Lodge

Blend Youth Cafe 3:00pm-5:00pm in All Saints Church

Cubs 6:00pm-7:00pm in the S&G Community Centre, Lower Road

Wednesdays:

Pilates 9:00am-10:00am in the Memorial Hall

Museum Volunteers 9:30am-12:00pm at the Museum

Yoga 10:00am-11:00am in the Pop In Studio

Over 60s Pop-In 2:00pm-4:00pm Tea and coffee and boot fair marquee at the Jean Mealham Pop-In Centre

Rainbows 5:00pm-6:00pm in the S&G Community Centre, Lower Road

Fish and Chips 4:30pm-7:30pm in the Village Car Park

Brownies and Guides 6:00pm-7:15pm in the S&G Community Centre, Lower Road

Boot Camp 6:15PM-7:15PM on the Village Green

Thursdays:

Yoga 10:00am-11:00am in the Pop In Studio

Art Society 10:00am-1:00pm at the Memorial Hall

BodyFlex 6:15pm-7:00pm at the Memorial Hall

BodyTone 7:15pm-8:00pm at the Memorial Hall Annexe

Badminton 7:00pm-11:00pm at the Memorial Hall

Explorers 7:30pm-9:30pm in the S&G Community Centre, Lower Road

Previous editions of the Newsletter can be found on The HUB Web site
www.woodchurchhub.UK



Other Events:

Sat 3rd **Football Woodchurch Reserves vs Bromley Green Firsts** 2:00pm on the Village Green
Scout & Guide Community Centre AGM 7:00pm at the S&G Community Centre

Sun 4th **Table Top Sale** morning at the Pop-In Lower Road
Morning Worship 11:00am at All Saints Church

Mon 5th **Classic Car meet** 12:00pm at the Bonny Cravat
CARM 10:30am to 12:30pm in the Memorial Hall
Snow White Auditions Junior 7:00pm in the Annexe
WLHS - "Royal Burial at Sutton Hoo" 7:30pm in the Memorial Hall

Tues 6th **Snow White Auditions Adults** 7:00pm in the Annexe
Bonny Cravat Quiz Night 7:00pm in the Bonny Cravat

Sun 11th **Newspaper Collection - Scouts**

Holy Communion 11:00am at All Saints Church

Tue 13th **WI "Mr Garricks Fireside"** 9:15 in the Memorial Hall

Wed 14th **Borough Councillors Surgery** 11:00 in The HUB

Six Bells Quiz Night 7:00 in the Six Bells

Sat 17th **Parish Gift Day** at All Saints Church

Sun 18th **Benefice Eucharist Harvest Thanksgiving** 11:00am at All Saints Church

Thu 22nd **Parish Council Meeting** 7:00pm in the Memorial Hall Annexe

Sat 24th **"Woodchurch Yard Together"** all weekend at All Saints Church

Football - Woodchurch Reserves vs Pilgrims FC 2:00pm on the Village Green

Sun 25th **Holy Communion with Baptism** 11:00am at All Saints Church

Thu 29th **Margaret Morris Movement** 2:15pm in the S&G Community Hall

Fri 30th **Ashford Astronomical Society "Telescope Trials and Tribulations"** 7:00pm in the Memorial Hall

The Full Community Calendar can be found at www.woodchurchhub.uk/community-calendar



Weekly calendar events sent directly to your email

Did you know that you can have the village calendar events sent directly to your email each week. If you would like to automatically receive the most up-to-date village events please email enquiries@woodchurchhub.uk or contact The HUB.





WOODCHURCH PARISH COUNCIL • **UPDATE** •

It is usual for many Parish Councils not to hold a meeting August due to councillor availability during the traditional holiday period. Historically, Woodchurch Parish Council has also done the same, meeting in August only if urgent planning matters arise. Although a Parish Council meeting had been scheduled for August in case any new planning applications or developments arose, they did not and due to the lack of councillor and clerk availability the meeting was cancelled.

Following the retirement of Judith the PC continues to advertise for a new permanent Clerk. A big thank you to Rob Woods for initially standing in as our interim Clerk and to Aniko Szocs for agreeing to continue in the roll until a permanent Clerk is found.

We would also like to give a big thank you to Lucy Bramley who has stepped down as Chair of the council. Lucy has made a very positive difference to the running of the council over the past year, whilst balancing the role with the demands of a full time job and a young family. Lucy will be sadly missed on the council.

We expect the new Chair to be confirmed at the next Parish Council meeting.

Unfortunately part of the children's play area continues to be unusable due to the break up of the surface. The delays in getting the area repaired are resulting from trying to satisfactorily resolve the issues around the poor standard of work carried out by the contractor who recently undertook the play area refurbishment.

The recent extremely hot weather has also resulted in some shrinkage of the play area surface in other areas. Please be careful when using the play area and supervise your children at all times.

We would like to thank the Carnival Committee for providing local organisations with well needed grants (~£4,000). This is from money raised during the spectacular Jubilee weekend. In addition to the awarded grants they have also raised sufficient money to help get the 2024 Carnival under way.

The next scheduled Parish Council meeting is on the 22nd September at 7pm in the Memorial Hall Annexe.

A BIG "THANK YOU"

I would like to say a very big thank-you to a young man from the Brattle estate. On Monday I foolishly tried to get on a bus to Tenterden using my concession card before 9:30. I went to leave the bus when this young man said "I'll pay her fare", which he did. What a wonderful act of kindness.

Thank you - Linda H (8th August)

Upcoming roadworks in and around Woodchurch Information from KCC and one.network

Roadworks - Shadoxhurst Road

26th - 28th September 2022

Closure in force: Road Closure

Description: Utility repairs and maintenance works in the vicinity of Allington

How to contact your Parish Council

In person: By talking to one of your councillors - details on the Parish Council Web site

By email: clerk@woodchurch-pc.gov.uk

By phone: 01233 861381

Through The HUB: Place your correspondence in a sealed envelope marked "Parish Council" and deliver to The HUB

By post to: Woodchurch Parish Clerk, c/o Woodchurch HUB, Front Road, Woodchurch, Kent, TN26 2PA

Through the contact form on the Parish Council Web site:
www.woodchurchhub.uk/parish-council/

The Meals Delivery Service is in urgent need of reserve meals delivery drivers within Woodchurch to cover for holidays and sickness. Delivery of meals within the village takes approximately an hour. If you can help on an occasional basis, please contact The HUB.

Meals Delivery Service now available in Woodchurch

The "meals-on-wheels" style Meal Delivery service has been running successfully in Woodchurch since the beginning of February and now has many Woodchurch residents making regular use of the service.



This is a daily delivery of a 2-course hot meal from 12:15 pm, Monday to Friday (not currently at weekends). You do not need to subscribe to every day.

This service is being organised in Woodchurch by The HUB, in conjunction with the Tenterden Social Hub. Your meal will be delivered piping hot by Woodchurch's own volunteers.

There are still spaces for customers and also a need for reserve drivers.

For more information please contact The HUB at
enquiries@woodchurchhub.uk or phone **01233 861381**
or contact Tenterden Social Hub on 01580 762882.

If you have any good news stories from around the village or know of someone in the village who deserves recognition for deeds that would otherwise go unnoticed, please let us know at The HUB so that we can share their good work.

WOODCHURCH SURGERY UPDATE

Well... A very good friend of mine was arguing the point that in the UK we should just forget trying to work in August as there is so little productivity and much of Europe shuts down anyway. Normally, August is our quiet month - this year has turned on its head. I would love to forget August as we have been busier than ever and had to fight with Staff Covid sickness, Staff leave and huge difficulty with supplies. As well as HRT, some of our really common medication has simply been unavailable from suppliers and during the hot weather the delivery vans became too hot and couldn't transport medication to us within the safety limits set by manufacturers.

Because of this, August has been a really difficult time and we are grateful to those that have been patient and understand the frustration caused. With a lot of extra work, we seem to have caught up - for now at least. This is a problem for all dispensing doctors and chemists; I hear the wait in some chemists locally is as much as two weeks which makes me feel proud of the work we have put in to stay within 3-5 days. There will, inevitably be further shortages which we simply have to request every day and see what turns up - not ideal for anyone but there is no other option.

Time for good news! We can celebrate Dr Henrique Lourenco's new post as a GP at Hamstreet Surgery and as a doctor in Pilgrims' Hospice. It is really pleasing to see one of our trainees being retained locally, especially within the PCN. I'm sure you will all wish him well with his future and we have enjoyed his time training with us at Woodchurch.

It has also been liberating to renew our appointment system after feedback from the Patient Participation Group and a revision of our Covid risk assessments. In essence, all appointments are now bookable as either telephone consults or face-to-face appointments. We will try to keep to time as much as possible, however, sometimes a case just takes longer or a priority crops up causing a knock-on effect on timing.

We have less waiting-area space and more patients than pre-covid so hope this hybrid system does not lead to overcrowding. We continue to ask that people with fevers and coughs wear face masks and where possible wait outside or in cars so we can come and get you, as long as we know you are here. A touch-screen check-in will be by the door which should be installed mid-September so should help this.

Flu and Covid News

We are expecting delivery of Flu Jabs on 7th September and are putting on Flu clinics now. Please call and book in your Flu jab if you are over 50 or if you are under 50 and have a long-term condition. We will be cracking on with this as soon as the stock arrives.

Covid jabs will arrive on the 12th September and we expect a limited stock for the Care Homes and people that are

Housebound. We think we will mainly get Moderna which has been on the news as being more protective from some of the new strains. We may also have some Pfizer but are not expecting any of the "Oxford" AstraZeneca. To be honest I would take any booster at the moment and am not sure if Moderna is any better than the others, so please don't delay for fear of getting the "wrong jab".

When we have achieved the first goal we will then work through the old cohorts - ie over 80's and clinically vulnerable, then over 70's etc... I think the tactic is to involve the GPs to do the hard work for the groups that can't make it to the vaccination centres. In light of this please call 119 and book into a Chemist and avoid delay for your Covid jab. We will be offering vaccines throughout the next few months but as we are being rationed, please use the Chemists where you can.

I wish you all the best, I apologise for the disruption, although I also realise that this is a problem that affects just about every industry at the moment. Being kind to those trying to help you will bring out the best in people and lead to the best outcome in these difficult times.

A happy September on behalf of Woodchurch Surgery,

Jack Hickey - GP

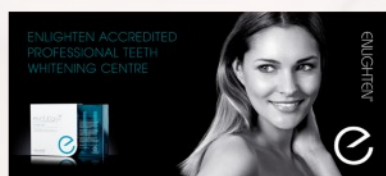


Woodchurch HUB now has over
1,200 Facebook followers



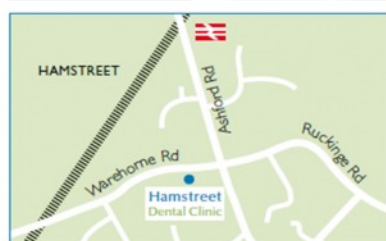
Surgery Opening Hours

Monday to Friday 9am to 5pm



Where to find us...

Hamstreet Dental Clinic
Warehorne Road
Hamstreet
Kent TN26 2JJ



Tel: 01233 733848

Email: hamstreetdentalclinic@gmail.com



All Saints Church



Dear Friends,

I hope you have all had some chance to enjoy the Summer - I can't believe that we are already at the time when young people are returning to school and colleges. I hope and pray this will be a good year for families, especially those who have children attending our local school.



I am delighted that our Youth Leader Jessie Banach has done such a good job in launching our Blend Youth Group, which is currently fully subscribed with 25 children across three school year groups. During the Summer they have enjoyed days out at Lydd water Sports and Go Ape, funded by a Kent County Council grant.

I am also very pleased that the church was granted £1,000 by the carnival committee, and, with the help of Maggie Pavely who raised over £400 on a raffle we have been able to start on the most urgent repairs to the church wall. This is a mammoth project which will cost over £50,000 so will be spread over a number of years.

We are also fundraising to remove our old heating system and chimney before we start more renovation work in the church - we always need help financially - it costs us £800 a week to keep going.

On Saturday 17th September we have our Parish Gift Day 10am-2pm in the church when you can meet me and our Church Warden Ann Tiplady, and members of our PCC. Please give generously, and enjoy bacon buttys and a cuppa with us.

On October 1st we have an amazing jazz band in church - the Drawtones have appeared at Ronnie Scotts in London and at the Rye Jazz and Blues festival - please come along for a great

evening's entertainment and to support your local church. Please see posters for tickets or visit the Hub.

Our Harvest Festival this year is at 11am on 18th September, and will be followed by a bring and share lunch - do join us if you can!

Every Blessing, Reverend Sue

What's happening at ALL SAINTS CHURCH?

COMMUNITY COFFEE MORNINGS

Come along on Tuesdays between 10 am - 12pm. Homemade cakes, chat and laughter. Free secondhand bookstall and play area for children. Tables inside and out. A warm welcome to everyone.

GIFT DAY SATURDAY 17 SEPTEMBER

Pop along between 10.00 and 2.00 and find out more about our historic church and our activities to keep it open. Refreshments available, craft stall and book stall.

CRAFT STALL LAUNCH!

From 17 September (on Gift Day) the new CRAFT STALL will be launched. Beautiful local handmade items will be on sale weekly at the COFFEE MORNINGS and at special events.

JAZZ and BLUES CONCERT October 1 with the renowned DRAWTONES.

Recently at Rye Jazz Festival and regulars at Ronnie Scotts Jazz Club. Look out for the poster! Fabulous evening with Licensed Bar and complementary canapes.

CHRISTMAS TREE FESTIVAL 9-11 December. Early notice of the popular event. Even bigger and better community event this year. Refreshments, entertainment and activities all weekend. Not forgetting Santa's Grotto! Look out for more details next month.

We are looking for musicians to play during the weekend. Piano available!

Altogether now Woodchurch - jazz hands at the ready!!!

The early 20th century was an era of breaking with tradition. Skirts became shorter and less restrictive, and this enabled women to move more freely than their Victorian parents. The young people could literally kick up their heels and dance could become freer and more expressive. There was an optimism in the air and of course this was matched perfectly with a new type of music that had recently emerged from New Orleans - a sound they were calling 'jazz'.

Jazz expresses joy, and the freedom and fluidity provided by the interpretive playing not only embodied the era but has influenced music ever since. A jazz evening is now coming to Woodchurch in the shape of the Drawtones who, in addition to touring the country, play at Ronnie Scott's jazz club in London.

Why go to London when jazz can come to you? Stay in Woodchurch and experience The Drawtones, with a drink from the bar, in the best acoustic venue - our church on 1st October 2022. Want a preview? Find a taster on their website: thedrawtones.co.uk where you will find information and videos.

By attending you will literally double the value of your ticket - not only will you experience an evening to remember, you will also be raising important funds to help the fabric of our church. Two for the price of one - now that's something to sing about!

Tickets available from The Hub, and now also online through Ticketsource (includes a small booking fee).

On a gloriously sunny, warm (but not too warm, on account of the intermittent, slight breeze), afternoon in early August, Woodchurch WI met at Shirkoak Farm to watch an impressive demonstration of floristry, followed by a truly scrumptious (echoes of "Chitty, Chitty Bang Bang" there) Cream Tea, consisting of a varied assortment of sandwiches, savoury and fruit scones, and cakes and filled meringue nests, all washed down with copious supplies of tea, coffee, water or juice, according to taste! We also learnt a little of the history of the farm house and the immediate vicinity from Josie, including details of a love triangle, which was only "resolved" by the attempted murder (by shooting) of one of the male protagonists - "Midsomer Murders" comes to Kent in the early 1800s!

Shirkoak Farm Fishery and Bed and Breakfast Hotel (www.shirkoakfarm.com) is run by Hugh Pickett and his wife, Sarah and their two daughters, Chloe and Phoebe. Chloe is a member of the Harrods Flower Arranging Team, and she began the afternoon with her masterly floral demonstration. She started by stripping of any foliage on the lower stems (a very important stage as it forms the basis for the whole bouquet). She then selected a pivotal flower to become the centre piece of her design, and placing it in her right hand, (she is left handed), she deftly added other stems to join that first flower, whilst all the while twisting the bouquet around and maintaining simultaneously a steady stream of useful information for us to absorb. For example, she explained the importance of working with odd numbers, thus keeping the important, major flower heads separate and evenly distributed throughout the display. Flowers such as hypericum and scabiosa were used as fillers for the growing bouquet and Chloe indicated that, if necessary, more could be added on completion. Finally, green stems are placed to surround, frame and enhance all the inner flowers. On completion of the now not inconsiderable sized bouquet, Chloe cut the stems across to create a flat surface and then with the help of her glamorous assistant, (aka her Dad), Chloe held the entire creation upside down to wrap it in, firstly several pointed layers of pink tissue paper, followed by four sheets of purple paper, completing the whole display by the addition of of patterned cellophane to



manufacture a water bubble so that it could be placed in a purple, beribboned box to facilitate transportation to the home of lucky WI member, Cathy Catlin, for it was she who won the draw - a magnificent end to a wonderful, convivial afternoon! Thank you so much to the Pickett family for their warm welcome and generous hospitality!



Our next regular meeting is scheduled for Tuesday, 13th September at 7.15 pm in the Memorial Hall, when Pete Allen will be our Speaker on the subject of "Mr. Garrick's Fireside - A History of The Theatre Royal". The competition will be "A Memento of a Theatre", Hope to see you there!

WI Christmas Market at The Memorial Hall and Annexe Saturday 3rd December 2:00-4:00pm



Would you like to have a stall at our market?
If so, please contact Josie on josie.mackie@btinternet.com or 860363

Stalls are £10 and will only be confirmed upon payment.
Payment should be made by Friday 18th November.



Woodchurch Cottage Flowers

We are an artisan florist and flower grower. We grow and sell the most amazing seasonal English flowers. All grown here at our smallholding in Woodchurch in Kent. We are a small flower farm working with nature and the seasons.



Call or text 07969 449235

www.woodchurchcottageflowers.co.uk

Make it colourful with a touch of blue.... so I did.

Natural funeral sheafs are becoming a more popular choice in farewell tributes.

People are moving away from the traditional chrysanthemum pillows and letters using oasis to a much more eco friendly method using moss.

Here at **Woodchurch Cottage Flowers** our tributes are perfect for natural burials or for anyone who prefers the natural country look for their loved ones flowers.

We can personalise each arrangement, whatever type you choose, to paint a story of a life in flowers.

Ledge FES

18th SEPTEMBER 2022

12PM TO 8PM

JEAN MEALHAM CENTRE, WOODCHURCH
MUSIC FESTIVAL TO RAISE MONEY
FOR OLI'S FIGHT AGAINST JERRY
FULL ON FESTIVAL VIBES!

END OF SUMMER BASH FOR
TEENAGERS

£10 PER TICKET

Email: Zoehopkins2013@gmail.com

OR MESSAGE FACEBOOK

@OLISFIGHTAGAINSTJERRY

All proceeds going to OLI'S FIGHT TO BEAT CANCER

Ledge FES LINE UP

12.05PM - IAN INGLES

12.50PM - DJ REKIT

1.30PM - ROBIN MACK

2.15PM - STEWIE DJ

3PM - MIA CARMEN

3.45PM - HAMMOND DJ

4.30PM - AMBER & JACK

5.15PM - DJ SAMMY GEE

6PM - LIAM COHEN

6.30PM - DJ SAMMY GEE

7PM - THE STEELWORKS

TICKETS VIA FACEBOOK @OLI'S FIGHT
AGAINST JERRY

Full on Festival Vibes

Full on Festival Vibes

The Six Bells Inn



September's Autumn Evenings are beckoning and the nights are drawing in but before they do, we are celebrating the last Bank Holiday of the Summer with our first "Beer Festival". I am sitting here with anticipation as to how the next few days will unfold but if the laughter and happy voices on the front patio are anything to go by then it will be a fun weekend. We have 18 real ales all racked and ready to be consumed and a selection of ciders (and of course plenty of other choices including alcohol free and soft drinks). So, with food, BBQ and hog roast, music, beer, cider and with plenty of laughter in the mix, it looks like great few days are on the cards (and cash is taken too !)

We have our monthly quiz nights to look forward to (this month will be Wednesday 14 September) so please book early to ensure you reserve a table.

We thank all of our customers for supporting us and with the autumn and winter soon to be upon us we can guarantee a warm welcome to everyone.

With love from Emily and All at "The Bells"

Bonny Cravat



Well, what a month August has been! We hope everyone has had a lovely month and for those on their summer holidays we hope you have all had an amazing break and enjoyed a cold one or two in the sunshine!

September is here and we cannot wait to see what it brings! As usual the first Sunday of the month will be our Classic Car meet - We hope the weather stays a beautiful as it has been, as we love to see all of the wonderful cars glistening in front of the pub.

Quiz night will take place on Tuesday 6th September - book now to save disappointment, this proves to be a very popular event here at the Bonny! You wont want to miss it!

Thank you to everyone for all the great laughs we've had this summer! We can't wait to continue this throughout autumn!

See you all soon! The Bonny Team

WOODCHURCH PLAYERS



Ghosts at the 'Pop-in'

Well, not really...but you never know! Grateful thanks to Richard Carley who is very kindly allowing the cast of 'Ghosts at the Grange' to rehearse in the 'Pop-in' Centre. Rehearsals are going well thanks to Ella Parmee our new young director, (who is studying drama) and cutting her teeth on this comedy 'who-dun it'. Details of how and when to book will be issued shortly. Please put the date on your calendar and come along and support us as we perform our first autumn play for two years. After a long pandemic, and lingering/lurking Covid in the background - the Players DID put on a pantomime early this year (thanks to Emma Priest) and a play in May (thanks to Ben Vincer).

**'Ghosts at the Grange' - at the Memorial Hall
on 14th and 15th of October.**

REMINDER No. 1: Pantomime (Snow White & the Seven Dwarfs) - **AUDITIONS** - Memorial Hall Annexe. Monday 5th/Tuesday 6th September:- 10 years old and under 7pm / over 10 years 7.30pm.

REMINDER No 2: You must be a member of the Players to perform and rehearse in any of our productions.

Woodchurch Scout Group



We are looking for a "Squirrel" leader and helper. This is a new section from 4 to 6 year olds. We also need a helper for the Cubs (8 to 10 year olds). We have lots of young people but we lack leaders.

To learn more please contact Julian West on [07887 748692](tel:07887748692)

Brownies

Brownies and guides

Guides

Start back on 14th September 6 pm till 7.15pm

If you are aged 7 to 10. Or aged 10 to 14. Why not come and join us and have fun

We have several things planned for the coming term

Ring or text Tracy

[07511 422375](tel:07511422375)

Simple Kent Funerals

Relaxed, flexible, imaginative, economical, caring

Applefield Cottage, Redbrook Street, Woodchurch TN26 3QS

Call Toby on 07806 613297 • www.simplekentfunerals.co.uk

We work in an eco-friendly and environmentally-sustainable way and are certified as a net carbon neutral business

Helping save and preserve our Church

ALL SAINTS CHURCH WOODCHURCH

HAMMOND | JAZZ | FUNK | SOUL

Presenting
THE DRAWTONES

AUTHENTIC CLASSIC HAMMOND ORGAN GROOVE

JAZZ CLUBS | JAZZ FESTIVALS | CONCERTS

The Drawtones pay tribute to the great Hammond organists and saxophonists in jazz, funk and soul.

The band are regulars at Ronnie Scott's Jazz Club, London.

Saturday, 1st October 2022

Doors open 7pm Concert starts at 7.30pm

LICENSED BAR and Raffle

Tickets £18 available from

<https://www.ticketsource.co.uk/all-saints-woodchurch>

or if you prefer - visit or call **WOODCHURCH HUB** 01233 861381

(Open Monday-Friday 10.00am-1.00pm Saturday 10.00am-12 midday)

Volunteer Centre Ashford

Do you have time to talk... or listen?

If you have an hour or two to spare, have you considered offering your time as a befriender?

Ashford Volunteer Centre's befriending service helps people who are unable to get out and about feel connected to their community again, and there are many people locally who would appreciate a regular visit from a friendly face. If you like to talk, or love to listen, you could have a huge impact on someone's life by volunteering just a small amount of time.

COME, LET US
HAVE SOME
TEA and CONTINUE
TO TALK ABOUT
HAPPY THINGS.



Interested in finding out more?

Contact Rose on
01233 665535 or
contact@ashfordvc.org.uk

A DBS check for befrienders will be required

www.ashfordvc.org.uk

Registered Charity No: 1066765



WOODCHURCH MEMORIAL HALL

QUIZ NIGHT

RAFFLE
GREAT
PRIZES

Saturday 8th October

7 for 7.30pm start - Teams of up to 6

£5 per person - Prize for winning team

To book a table phone Joy Rubie 01233 861483

Please feel free to bring your own food and drink.

Tea, Coffee and Cakes will be available during the interval at a cost of £3

[Woodchurch Memorial Hall](#)

Woodchurch Memorial Hall is happy to announce that you can now connect to the amplifier and speakers in the Main Hall via bluetooth, so you can use the music on your phone.



Woodchurch FC September 2022 Fixtures



All Kick Off times are 14:00

Saturday 3rd September

Pilgrims FC v Woodchurch Firsts

Woodchurch Reserves v Bromley Green Firsts

Saturday 17th September

Weald Of Kent Cup

Woodchurch Firsts v Bocca Juniors

Bromley Green Firsts v Woodchurch Reserves

Saturday 24th September

Bromley Green Firsts v Woodchurch Firsts

Woodchurch Reserves v Pilgrims FC

SUNFLOWER SUMMER CHALLENGE - The results!

Thank you to everyone who grew sunflowers this year and to all those who entered our fun sunflower competition. We had a great time judging them all mid-August and pleased to confirm the winning sunflowers as follows:

Tallest: Congratulations to Peter who won with a very impressive 3.54M

Biggest Flower: Congratulations to Jessica & Heidi with an equally impressive 29cm

Funniest Face: Congratulations to Margaret with her wonderful Sunflower family



Special thanks to our guest judges - Amber (Dean & Rachel's daughter from Pinecove Nurseries) and Nastya & her son Gleb from Ukraine.

Christmas Tree on the Green lights switch-on - Friday 2nd December

As announced earlier in the year, Woodchurch in Bloom are delighted to be coordinating the Christmas Tree lights switch-on on the Green again this year - please put Friday 2nd December in your diaries.

Watch this space as we are going to be able to share some of our exciting plans with you for this event very soon.....

We are keen to link up now with any other group/club/society in the Village or local businesses who would like to be involved in this event by having a stall, so please get in touch asap if interested to find out more. We are also aware of several other Christmas events being planned for that first weekend in December and believe we have a great opportunity to coordinate and promote 'Christmas comes to Woodchurch 2022', in a joined-up way. So, if you are planning a Christmas event that first weekend of December, please get in touch via woodchurchinBloom@hotmail.com or leave a note in the HUB for the attention of Philippa Jones.

The Meadow on the Green extension - update

Our meadow is still being developed and going through its rewilding process. Part of this involves laying tarpaulins in areas to create bare patches for sowing wildflower seeds. To ensure this process works, we politely ask that dogs are encouraged to keep away from these tarpaulins. We really appreciate your support with this whilst we continue to work on this area.

First aid training

Free 1 hour training in adult and children resuscitation and familiarisation in the use of a defibrillator by an experienced first aid trainer.



Contact Larry on [01233 861461](tel:01233861461) for more information.

Woodchurch Men's Shed

At the Pop Inn Centre (Jean Mealham Centre)

At last the Woodchurch Men's Shed is up and running, albeit a little slowly. The idea started by Chairman Gordon Baker as a kind of mini Repair Shop but as there is a very strong Men's Shed organisation in Kent and throughout the world, it has kind of changed its mode of operation.

It is now open with particular thanks to Richard Carley who has donated a shed for us to use, also many thanks to Woodchurch Carnival Committee for their donation of £500 towards the purchase of tools.

The shed is open to anyone over 18 and its objective is for people to share any skills they have, learn some new skills and also somewhere to meet for a chat and tea or coffee.

At the moment we plan to be open on a Thursday morning from 10am to 1pm.

If anyone has materials and or tools they would like to donate it would be much appreciated. Please contact Gordon at ggbaker0@gmail.com or leave a message at The HUB

WoodchurchYardTogether ("WYT")

Our next volunteer gardening weekend in the Churchyard is:

24th & 25th
September



Keeping in Touch:

Email:

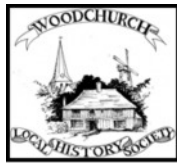
Philippa@woodchurch@btinternet.com

Or follow us on Facebook



Search: 'WoodchurchYard Together'

Woodchurch Local History Society
(WLHS) - Monday 5th September,
7:30pm.



WLHS society meets again after our summer break with a public meeting in the Memorial Hall at 7:30pm on Monday 5th September. We are delighted to have Imogen Corrigan as our evening speaker and she will be delivering her presentation on the 'Royal Ship Burial at Sutton Hoo'. Imogen has been to us before on several occasions and members will testify that she is an excellent speaker and uses superb illustrations to tell her stories.



Sutton Hoo (near Woodbridge, Suffolk) is the site of 20 Anglo-Saxon burial mounds which were reserved for special members of their society. Most importantly, a particular barrow was excavated in 1938 which proved to be the burial place of a 6th or 7th century Anglo-Saxon King of East Angles (probably Raedwald).



The king was buried in a long ship together with many of his treasures. The museum on the site today exhibits these wonderful objects (or their replicas) - of particular importance in terms of beauty are his helmet, his shield and pieces of ornate costume jewelry (like shoulder clasps).



A recent film, called 'The Dig' starring Ralph Fiennes, has been made of the discovery and of its subsequent excavation

Visitors are very welcome indeed to come along to this special meeting on September 5th - they pay £3 at the door. Alternatively, if visitors wish to join our society they can pay a half year membership fee of £5 which will last until December this year.

Our meeting in October is on Monday 3rd, 7:30pm at the Memorial Hall and the topic that night is 'The History of Nursery Rhymes' by Dr John Reuther.

If you would like more information contact Geoff on **01233 860393**.

Penny Sharing Yoga

Yoga classes each Tuesday and Wednesday at 10am in the Studio at the Pop-In, Lower Road.

For more information please contact Penny on pennysharingyoga@gmail.com or 07971 888404.

Or visit my Facebook page
www.facebook.com/Pennysharingyoga



WOODCHURCH CARNIVAL 2022

Carnival 22 Community Grants

Thank you to all who supported and took part in this year's Carnival. With your help we are proud to have been able to give back to the community the following grants:

- **All Saints Parish Church - £1,000** - towards repairing wall
- **Scouts - £500** - towards climbing wall
- **Jean Mealham Popin Centre - £500** - towards Christmas festivities
- **Woodchurch Men's Shed - £500** - carpentry equipment
- **Woodchurch Memorial Hall - £455** - towards hearing loop installation
- **Woodchurch in Bloom - £300** - autumn plants in village
- **Woodchurch Village Life Museum - £500** - new display cabinet
- **WoodchurchYard Together - £200** - bulbs in new meadow bank

Money has also been put aside to ensure that 2024 Carnival will go ahead. Thank you all!

Woodchurch Village Life Museum

Thanks to the generosity of the Carnival committee, the museum has been able to purchase a modern counter unit for the entrance to the museum.



Many thanks must also be given to the growing number of volunteers who meet on Wednesday mornings to undertake such tasks as gardening, general repairs, or maintenance and also to the volunteers who give of their time to meet and greet at weekends and Bank Holidays between the hour of 10 to 1 or 1 to 4.

If you would like to become a volunteer, then why not join us for coffee/tea on a Wednesday morning round about 11am, email us at enquiries@woodchurchheritagetrust.uk or leave a message at The HUB.

Village Lost Property at The HUB

If you find any lost property around the village please bring it to The HUB. We will hold it there waiting to be claimed for four months. For any valuable/important items that we have handed in, we will place notices online, in the Newsletter and on social media. If you have lost something around the Village please let The HUB know as it may have been handed in. Do you recognise any of the items that have recently been handed in?



- JCB Tractor toy, Ring, Umbrella

Everything Outside

Bringing New Life
To Your Garden

For A Quick Quote From A Company You Can Trust Call

☎ 01580 766 232 ☑ 07795 465 861

Welcome To Everything Outside

We cover a wide range of services to meet the requirements of our ever-growing client list, if you are looking for a company you can trust to provide a high standard of quality work covering

- ✓ Gardening
- ✓ Garden Design
- ✓ Fencing
- ✓ Clearance
- ✓ Landscaping
- ✓ Hedge Cutting
- ✓ Tree Surgery
- ✓ Digger Work

and much more. Then call our experienced team today on 07795 465 861. To view our full range of services, click on the link below.

Our head office is based in Tenterden, Kent and means we are in the perfect location to proudly service Kent and East Sussex. All our services are tailored to each job we carry out and our team are experienced in all aspects of fencing and landscaping services making us your number one choice for all work you require.

Great Work

Great Reputation

Great Price



Design, planning & build services

Now offering full 3d design development for your extension, new build or conversion project. Please call us for an introduction to our design services at our Woodchurch office.

01233 861177 vernacularhomes.com



fab feet Professional Foot Healthcare

www.fabfeethealthcare.co.uk

Delivering high quality Podiatric care in the
comfort of your own home

Providing a reliable and friendly service of professional
treatments for all of your foot ailments:

Call Michelle on:

Tel: 01233 731207

Registered & Insured



O
U
R

S
P
O
N
S
O
R
S



Nicholls Restores

Antique furniture restorer & Wood finishing specialist



01233 860130 - nichollsrestores@btinternet.com

Tenterden Removals

The Professional Removers in the Weald



Secure Storage at a Competitive Price

To help keep the Newsletter free for
the village please become one of our
sponsors or give a donation if you can.

www.woodchurchhub.uk

or Contact The HUB for more information



Try our professional
Home News
Delivery service

New customer introductory
offers available

Have your paper delivered before you go to work and
read it with your breakfast!

- ✓ Early delivery - before 6.30am (7.30am at weekends)
- ✓ Excellent communication - phone or email ALWAYS responded to
- ✓ Different billing options available
- ✓ All national and local newspapers available to order
- ✓ All magazines available to order
- ✓ Well established reliable company with over 4,400 customers

Place your order today by telephone on
01580 763183

or email us at mail@jackiesnews.co.uk
or go to www.jackiesnews.co.uk/place-your-order



07944 940 182

EST. Over 35yrs

**Extensions
General Building
Property Maintenance
Brickwork/Stonework Specialist
Landscaping**

Free Estimates



Chris@cgmbuildersltd.co.uk

www.cgmbuildersltd.co.uk

KENT 
HOLIDAY COTTAGES

+44 (0) 1233 860 293

info@kentholidaycottages.co.uk



WOODCHURCH

SHOP BAR WINE TASTING TOURS

Thursdays to Sundays 11am - 5pm

<http://woodchurchwine.co.uk> tel:01233 860276

You could advertise your company here
from as little as £10 per month



Remedial massage therapy.

Your Local Woodchurch Massage Therapist

- Remedial Massage
- Sports Massage
- Holistic Massage

- Ultrasound Therapy
- Electrotherapy



- Injury Treatments & Rehabilitation
- Rehabilitation Taping/Strapping
- Athletic Taping/Strapping

Bookings - 07799221043

www.musclewhisperer.org.uk

Treatment Room - Little Vale TN26 3QW

musclewhisperer@outlook.com



**SO MUCH MORE
IN YOUR LOCAL
COUNTRY STORE**



Of course we sell agricultural parts and machinery.

We also sell outdoor and PPE clothing, alongside hand tools, adhesives, hardware, barn paint and much more...

We're online too: ernestdoeshop.com

Hendon Barn, Woodchurch
Ashford, Kent TN26 3QP
Tel: 01233 224860

 **ernestDOEpower**
where you buy with confidence



Appledore Local History Society

We urgently need your help!

Appledore Local History Society is about to become homeless!

We have been advised that the Appledore Methodist Chapel is to be closed and will be put up for auction on 21st September 2022. We only have until that date to remove the documents and artefacts we have in store there, into safe storage elsewhere.

We urgently need to secure safe and dry storage, on an interim or long-term basis and we invite any member of the local community who has outbuildings that could suit, to urgently contact us. The size of a stable or single car garage would suffice, anything larger would be a bonus.

We require periodic access to the items that will be stored, in order that we can continue to catalogue them as well as occasionally remove them for display at suitable venues on Heritage Open Days and loan them to interested parties.

Our final meeting of ALHS at the Methodist Chapel was held on 11th August 2022 and we held our Heritage Open Day there on Saturday, 27th August 2022, which was enjoyed by many.

Please help us to secure a new home.

Contact our Chairman, Brian Knight on
T: [01233 758319](tel:01233758319) or E: ThrKng@aol.com



Support your local museum- you could win a
£50/£30/£20 prize every month.
For more information please contact Joyce via The HUB -
enquiries@woodchurchhub.uk or [01233 861381](tel:01233861381)

August 2022 Draw Results

1st prize	£50	Chrissie Northfield	501
2nd prize	£30	Val Tribe	1354
3rd prize	£20	Peregrine Massey	76

Margaret Morris Movement Gentle exercise for the over 50's

The Margaret Morris Movement - Gentle exercise for the over 50's, will start classes again on Thursday 29th September at 2.15 pm at the Scout Community Hall, Lower Road. If anyone would be interested in joining us, please contact me Alannah Small on [01233 770 607](tel:01233770607) for details of the class and price and safety precautions to keep everyone safe.

Ping Pong Club

There is a weekly 'PING PONG' Club starting at Shadoxhurst Village Hall (TN26 1HZ). The first session will be on Tuesday 27th September 10am - 12noon (£2 per session includes refreshments). With two full sized table tennis tables and plenty of spare bats & ping pong balls we are set up ready for you to play. Fitness and fun for all ages and abilities. For more information call Hannah [01233 733653](tel:01233733653) / [07963 717063](tel:07963717063)

Jean Mealham Pop-In Centre

As many of you will know the Jean Mealham Pop In Centre volunteers run a successful table top sale and all-day breakfast on the first Sunday of each month.

We are considering the addition of a Food/craft market and are currently exploring what interest there is from potential stall holders.

If this is something you would like to be involved with then email your name and product/s that you will be selling to enquiries@woodchurchhub.uk.

At this stage there is obviously no commitment. There would be a small fee (no more than £5) for setting up. We hope to begin before the end of the year.

For the 3rd Year running the Proms Weekend at the Pop-In have been a great success. Music from Chris and Jo Powell, Troy Jackson, Ruby Sisterz, Malcolm Lay and Miss Holiday Swing. Thank you for everyone who came and made the weekend a great success.



Scout Group Paper Collection

Woodchurch Scout group collect paper in the village on the second Sunday of every month. Please have your paper outside your property, visible from the road, by 9am. The proceeds from this help to run the mini bus which allows the scout group to get about for activities.

WOODCHURCH VILLAGE LIFE MUSEUM

Susans Hill, Woodchurch



Open from 10am to 4pm Saturdays, Sundays and Bank Holidays
from Easter till the end of October. **FREE ENTRY**

Woodchurch is one of a very few villages in Kent that has its own accredited museum. Please visit and help support our local treasure.

To join our 2022/23 "150+ Club"
please register here today or
contact Woodchurch HUB for
more information.

We are also part of the Ashford
Community Lottery. Scan the
QR Code to join.

Ashford
COMMUNITY
Lottery





Woodchurch Village Life Museum – 2022-23 Draw

Don't forget to come and visit us and bring your friends. Entry is free.



We are getting ready to launch the 2022-23 Museum draw and if you would like to be included then please let us know by the end of September.

We would like to give a massive thank you to everyone who has subscribed to the Museum 150+ Club over the past 20 years and we hope that you would like to support us in 2023. Woodchurch Heritage Trust is a registered charity (#1193824) which is run entirely by volunteers. Your generous support will help us to raise the £7,000 that we need each year to keep the museum open.

Woodchurch Heritage Trust was formally known as the Woodchurch Museum Trust (#800959) but it has recently changed its name to enable us to also support other village heritage in the future.

The cost of the draw will remain unchanged for 2022-23 at £12 for the year (£1 per month)

and for that you will receive four numbers which will be entered into the draw each month. The winning numbers are drawn at random at the beginning of each month, commencing in October, and the prizes are paid in cash and the winners are notified directly. Full results are published each month in the Woodchurch Community Newsletter. All of the money raised (after the prizes have been paid) goes directly to Woodchurch Village Life Museum and there are no salaries, fees or commissions paid.

THERE ARE THREE PRIZES TOTTALLING £100 TO BE WON EVERY MONTH

FIRST PRIZE £50

SECOND PRIZE £30

THIRD PRIZE £20

If you have supported us in the past, you will already have pre-allocated numbers for the new draw. If you are new to the 150+ Club then numbers will be allocated to you at time of registration. If you would like to subscribe please either fill in the form below and drop it in at The HUB with your payment, Email your details to 150Plus@woodchurchheritagetrust.uk or email jnash@nashweb.net if you would like someone call to collect your payment.

To make it as easy to pay as possible there are now several ways by which you can pay.

Cash or Cheque – Cash or cheques can be paid at The HUB (open Monday through Friday 10am to 1pm and Saturday 10am to midday). Payments can also be made at 62, Lower Road, Woodchurch, Kent TN26 3SG. Please either print out and bring along a copy of this email, or a note of your allocated numbers. If pushing through the letterbox please seal in an envelope.

Bank transfer (BACS) – Bank: LLOYDS, Account Name: "Woodchurch Heritage Trust",

Sort Code: 30-98-97, Account Number: 54888862. Please quote your name and postcode in the Reference

Credit Card – You can pay by credit card at The HUB or we can email you an invoice that you can pay online. Please reply to this email (150Plus@woodchurchheritagetrust.uk) to let us know if you would like us to invoice you.

Home visit – Reply to this email or email jnash@nashweb.net requesting that someone calls to collect your payment

***	Please note that for your numbers to be entered into the first draw in October, we must have received your payment	***
-----	---	-----

To subscribe, please complete the information below

Name:

Address:

Contact Number:

Email:

For this plan to succeed, we need as many people as possible to make a small regular monthly donation to the new Widow's Mite Fund.

We need:-

- 1500 people to donate £2 per month*
- or 600 people to donate £5 per month*
- or 300 people to donate £10 per month*
- or you see where I am going with this*

Ways to help:

You can set up regular donations through the Parish Giving scheme via www.parishgiving.org.uk or by scanning (See A below). Alternatively, there are paper forms available in the church.

- 1) *You can make a one-off donation by cash or cheque; you can bring your donation to the church on Gift Day, or pop it into the church when you are passing; there are slips available if you are able to Gift Aid your donation – there is a safe in the church for donations on your left as you enter.*
- 2) *You can make a one-off donation by scanning (see B below)*
- 3) *We have a contactless payment device which will be available on Gift day if you wish to pay by card*

A



B



For more information, please contact:
Reverend Sue Rose 01233 820266
revsuerose@outlook.com

The Parable of the Widow's Mite

The Parable of the Widow's Mite speaks to us about the nature of giving, although the Widow's donation was small, her offering still made a difference.

The Parable of the Widow's Mite according to the Gospel of Mark

Jesus sat down opposite the treasury and observed how the crowd put money into the treasury. Many rich people put in large sums. A poor widow also came and put in two coins, worth about a couple of pounds. Calling his disciples to himself, he said to them, 'Amen, I say to you, this poor widow put in more than all the other contributors to the treasury, for they have all contributed from their surplus wealth, but she, from her poverty, has contributed all she had, her whole livelihood.'

The Widow's Mite Fund explained

The Widow's Mite Fund has been set up in 2022. All money donated to the new Widow's Mite Fund will be used to maintain the History and Traditions at All Saints Woodchurch and to enable Woodchurch PCC to fulfill its financial obligations and to maintain the fabric of the Church Building.



Thank you for your support

Parish of Woodchurch All Saint's Church Widow's Mite Fund



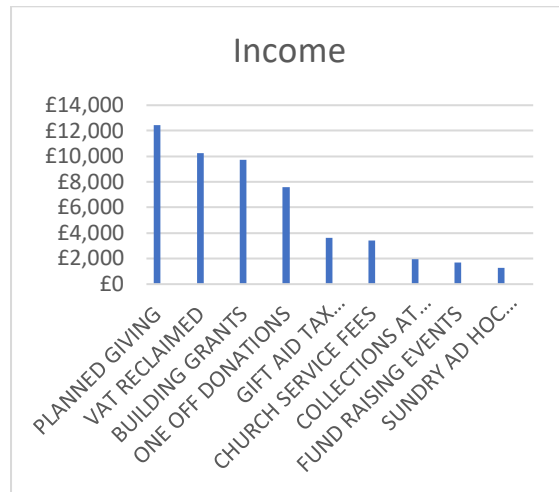
**Save our Traditions
Save our Church
Save our History
Save our Priest**

Please support your local Church

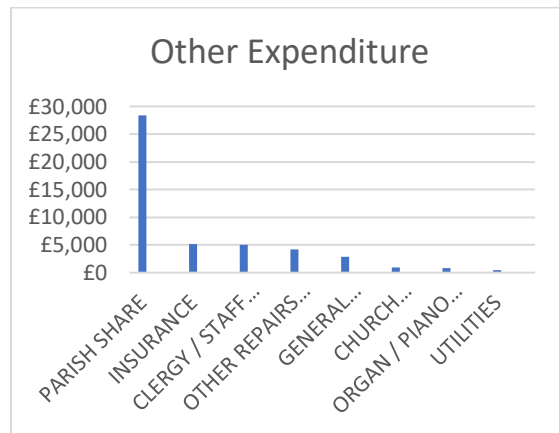
GIFT DAY 10am-2pm

Saturday 17th September 2022

Total income for 2021: £51,951



Total expenditure for 2021: £112,041
– Heating system £64,145



Excess of Expenditure over income for year ended 31/12/2021: £60,090

Current funds in hand: £12,500

Youth work fund £30,000 (restricted use)

It costs us £800 per week to keep open, not taking into account repairs and maintenance

What are we planning to do with any funds raised?

- Decommission our old heating system and remove the Victorian flue
- Repair the church wall
- Refurbish the toilet and kitchen area
- Redecorate the church and update the layout to enable better community use

What else are we planning to do in the future?

- Start a toddler group in church, run by families for families
- Restart "Open the Book" bible visits in school
- School holiday activity club
- Continue running village foodbank
- Launch Eco church
- Improve our welcome and hospitality to all in church (our thriving Tuesday coffee morning is an example of this!)
- Include some more informal services, including pet and outdoor services
- Outreach to those in need – foodbank in church and support for refugees
- Courses for those exploring faith

You are invited to meet us at our

Craft Stall

Gift Day
Saturday 17th
September
10 am-2pm

Bacon Butties

Thanks to those who help us:

- Our volunteer gardeners
- Flower arrangers
- Our fundraisers
- Those who run coffee mornings
- Those who clean our church
- Those who help with odd jobs