



# WOODCHURCH COMMUNITY NEWS

*The village community working together*

August 2022

Contact us: Telephone 01233 861381 Email enquiries@woodchurchhub.uk Web www.woodchurchhub.uk

**OVER 900 COPIES distributed every month in the Woodchurch area**

## WOODCHURCH Community Calendar



### Weekly events:

#### Saturdays:

**Boot Camp** 9:00am-10:00am on the Village Green

#### Mondays:

**Pilates** 9:00am-10:00am in the Memorial Hall

**Tai Chi and Qigong** 9:45am - 11:45am at the S&G Community Centre, Lower Road

**Knit and Natter** 2:00pm - 3:30pm in the Pop In Lodge

**Beavers** 6:00pm-7:00pm in the S&G Community Centre, Lower Road

**BodyTone** 6:15pm-7:00pm at the Memorial Hall

**BodyFlex** 7:15pm-8:00pm at the Memorial Hall

**Scouts** 7:30pm-9:00pm in the S&G Community Centre, Lower Road

#### Tuesdays:

**Pilates** 9:00am-10:00am, 10:15am-11:15am and 6:00pm-7:00pm in the Memorial Hall

**Coffee Morning** 10:00am-12:00pm in All Saints Church

**Little Leaves Forest School** 10:00am - 12:00pm under 5's Play Group based in Woodchurch

**Community Warden** 1:00pm-3:00pm in the HUB

**Puzzle Club** 2:00pm-4:00pm in the Pop In Lodge

**Blend Youth Cafe** 3:00pm-5:00pm in All Saints Church

**Cubs** 6:00pm-7:00pm in the S&G Community Centre, Lower Road

#### Wednesdays:

**Pilates** 9:00am-10:00am in the Memorial Hall

**Museum Volunteers** 9:30am-12:00pm at the Museum

**Over 60s Pop-In** 2:00pm-4:00pm Tea and coffee and boot fair marquee at the Jean Mealham Pop-In Centre

**Rainbows** 4:15pm-5:30pm in the S&G Community Centre, Lower Road

**Fish and Chips** 4:30pm-7:30pm in the Village Car Park

**Brownies** 6:00pm-7:00pm in the S&G Community Centre, Lower Road

**Boot Camp** 6:15PM-7:15PM on the Village Green

#### Thursdays:

**Art Society** 10:00am-1:00pm at the Memorial Hall

**BodyFlex** 6:15pm-7:00pm at the Memorial Hall

**BodyTone** 7:15pm-8:00pm at the Memorial Hall Annexe

**Badminton** 7:00pm-11:00pm at the Memorial Hall

**Explorers** 7:30pm-9:30pm in the S&G Community Centre, Lower Road

Previous editions of the Newsletter can be found on The HUB Web site  
[www.woodchurchhub.UK](http://www.woodchurchhub.UK)



### Other Events:

Mon 4<sup>th</sup> **HI Kent - NHS hearing aid aftercare** 10:30am to 12:30pm in the Memorial Hall

**CARM** 10:30am to 12:30pm in the Memorial Hall

Sat 6<sup>th</sup> **Weald of Kent Steam Rally** Little Engeham Farm

**Football Woodchurch intra-squad friendly** 11:30am on the Village Green

Sun 7<sup>th</sup> **Weald of Kent Steam Rally** Little Engeham Farm

**Table top Sale** 9:00am-12:00am at the Pop-In Centre

**Pet Service** 11:00am at All Saints Church

**Classic Car meet** 12:00pm at the Bonny Cravat

Tue 9<sup>th</sup> **WI Cream Tea** at Shirkoak Farm

Wed 10<sup>th</sup> **Borough Councillors Surgery.** 11am to 12am at The HUB

Sat 13<sup>th</sup> **"Woodchurch Yard Together"** all weekend at All Saints Church

**Village Yard Sale** 10:00am to 3:00pm Locations around the village

**Football - Woodchurch First vs Smarden** 2:00pm on the Village Green

Sun 14<sup>th</sup> **Newspaper Collection** - Scouts

Mon 15<sup>th</sup> **Woodchurch Patients Participation Group (PPG)** 6:00pm-7:30pm in the Memorial Hall Annexe

Sat 20<sup>th</sup> **Football - Woodchurch Reserves vs Bromley Green Reserves** 2:00pm on the Village Green

Sun 21<sup>st</sup> **Pop-up shop - Woodchurch Market Garden.** 10am - 2pm on Village Green car park

**Morning Worship** 11:00am at All Saints Church

Thu 25<sup>th</sup> **Parish Council Meeting** 7:00pm in the Memorial Hall Annexe

Fri 26<sup>th</sup> **Ashford Astronomical Society** - Summer social 7:00pm in the Memorial Hall

Sat 27<sup>th</sup> **Bonny Dog Show** at the Bonny Cravat  
**Football Woodchurch Firsts vs Fountain** - 2pm on the Village Green

**Garden Proms Concert** 2:00pm and 7:00pm at the Jean Mealham Centre, Lower Road

**Live Music - The Clark Collective** 7:00pm at the Bonny Cravat

Sun 28<sup>th</sup> **Holy Communion** at All Saints Church 11:00am

**Garden Proms Concert** 2:00pm and 7:00pm at the Jean Mealham Centre, Lower Road

The Full Community Calendar can be found at [www.woodchurchhub.uk/community-calendar](http://www.woodchurchhub.uk/community-calendar)





## WOODCHURCH PARISH COUNCIL • **UPDATE** •

Firstly we wish to remind you that dog owners must clear up after their pets. Dog fouling is an ongoing problem in the village which is regularly reported to us. There was even a report of it being left in the play area. This is not only inconsiderate and unpleasant but additionally no dogs should be entering the play area.

The PC wishes to thank the Woodchurch Yard Together team who have purchased an additional bin for dog waste located inside the gate of the church yard by the bus stop. This bin is to combat the issue on a popular footpath and we are grateful for them taking action to address the problem. The PC has agreed to support this issue by emptying the bin along with those we are responsible for.

The Parish Council has also discussed the ongoing issues with the play area. We have agreed the necessary next steps and once we have the required confirmation from the appropriate professional body we will commence the work. We wish to apologise again for the inconvenience the disrepair is causing and wish to reassure you that we will be rectifying the issue as soon as possible. The extreme heat this month has also prevented work being completed, but we will post an update as soon as we can commence work. In the meantime please remember that children must be supervised in the play area at all times.

We also wished farewell to Councillor Eleanor Jones this month. She has been a valued member of our team and we shall miss her enthusiastic contribution to the council meetings and projects. Thank you for the work you have done, Eleanor, and the time you gave to the community.

Due to Eleanor and Judith (our clerk) leaving, we currently have a vacancy for a councillor and also we are advertising for a new Parish Council Clerk. If you are interested in applying for either of these posts, please see the adverts within the community newsletter and Web site.

While we hire a new permanent clerk, we are pleased to welcome Rob Woods as a voluntary interim locum clerk. Rob has previously been a member of the Woodchurch Parish Council and he is a current clerk for another Parish, so he is well placed to support us until we have someone in post. Rob has transitioned into the role through July and you are still able to contact the council in the normal way through our email [clerk@woodchurch-pc.gov.uk](mailto:clerk@woodchurch-pc.gov.uk)

**Finally, members of the council wish to thank Judith Batt, clerk of the council for almost 20 years, as she ends her time with us and moves on to a new role. Many of you will have spoken to Judith over the years through her work with the council and will know how much knowledge and dedication she has brought to the role. Thank you again, Judith, for all your hard work.**

### Upcoming roadworks in and around Woodchurch Information from KCC and one.network

#### **Roadworks - Rectory Close, delays unlikely** **22<sup>nd</sup> - 30<sup>th</sup> August 2022**

Closure in force: Some carriageway incursion  
Description: UK Power Networks

#### **Roadworks - Brook Street, junction of Moor Lane** **delays possible** **3<sup>rd</sup> - 9<sup>th</sup> August 2022**

Closure in force: Multi-way traffic control  
Description: Remove old collapsed pipe and replace with new twin wall pipe. 2 x Brick head walls and 20.0m of ditching.

### How to contact your Parish Council

**In person:** By talking to one of your councillors - details on the Parish Council Web site

**By email:** [clerk@woodchurch-pc.gov.uk](mailto:clerk@woodchurch-pc.gov.uk)

**By phone:** 01233 861381

**Through The HUB:** Place your correspondence in a sealed envelope marked "Parish Council" and deliver to The HUB

**By post to:** Woodchurch Parish Clerk, c/o Woodchurch HUB, Front Road, Woodchurch, Hkent, TN26 2PA

**Through the contact form on the Parish Council Web site:**  
[www.woodchurchhub.uk/parish-council/](http://www.woodchurchhub.uk/parish-council/)

### The Great Woodchurch Village Yard Sale Saturday 13th August



Woodchurch HUB is organising a repeat of last years successful village up-cycling, for sale and "give-aways" yard sale. It will be held on **Saturday 13th August** from 10:00 am to 3:00 pm.

There is no charge if you wish to be included on the map.

Please let us know at The HUB or by email to [enquiries@woodchurchhub.uk](mailto:enquiries@woodchurchhub.uk) with your name and address by Sunday 7<sup>th</sup> August.

We love the magical setting of Woodchurch so much we want to extend a discount of 10% off your meal at our Patio Takeaway (Grass fed burgers, veggie and vegan) when you visit the Rare Breeds Centre and live in a Woodchurch postcode.



Book online in advance to attend. [www.rarebreeds.org.uk](http://www.rarebreeds.org.uk)

You can use the discount as many times as you like but proof of postcode required when placing order.

**Offer open until 1 September 2022.**

## WOODCHURCH SURGERY UPDATE

After a fantastic two-week break for me, it is full-bore back to business. Like most people it has been hard to enjoy a break away in the last two years; but wow, it was worth it! It was interesting to see that most people have rejected mask-wearing in most areas and I was a bit "pointed at" in Supermarkets and Airports especially in the recent heatwave that Europe has experienced.

I am still really aware that a number of our local population have had Covid recently and it has been really disruptive for the teams at the Surgery. It will be really tough to keep treating it as a "bit of a cold" when those with it will need five to ten days off - for one thing it makes business continuity really hard for those left behind, and then there is always a concern that people can still be really ill from it. Thanks to the staff who have come in on days-off and holidays to help keep the show on the road.

So, we have the news that the next phase of Covid immunisations will be launched from early September. We don't know a lot of the detail (as usual) and are being drip fed extra information as it comes. Because of that we still don't really know if it will be offered with the flu-jab or if it will be separate. Broadly speaking our targets will again prioritise the over 75s and Care Homes and then trickle down to over 50s and all those with long-term conditions. Please don't ask yet - as we don't know. The flags will be out again!

Again we can announce another new member of the team! This time a "PCN" member called Jena who will champion being a mental health coach for younger people. We have been looking for someone for this role for the last couple of years so it is an exciting situation for us. She should be starting mid-August. Also starting in August are the GP trainees - a welcome back for Dr Mukundh Putkoo and a new welcome for Dr Lauren James. I'm sure you will all give them the usual warm Woodchurch welcome.

That is way-more exciting than a "Care Quality Commission" inspection on the 2nd and 3rd August. It is education's Ofsted version for all Care Providers and it is hard to think of it as anything other than a threat. However, as we have put our heads together we have been able to think of all the great things that the team have done over the last 3 years. While nothing can be perfect I know that there is a genuine desire from everyone to want to do a good job. We are always open to any suggestions from the community to direct our energy differently so please let us know if you have any problems/suggestions for change.

During the excitement of preparing for the CQC it is heartening to see all the planters up around the village and "cheers the soul" on my way home.

With best wishes to everyone on behalf of the Surgery - Jack Hickey, GP.

## Woodchurch Patients Participation Group (PPG)

Our next PPG meeting is on:

**Monday 15<sup>th</sup> August**

Our Speaker will be a representative from the Kent Fire & Rescue Service

**Memorial Hall Annexe starting 6 pm**

All Woodchurch Surgery Patients welcome!

Future PPG Meeting dates: Monday 21<sup>st</sup> November

At each meeting we will be joined by representatives from Woodchurch Surgery and a 'Speaker' from a local group/organisation.

If you would like to receive PPG Surgery updates and details of speakers for the meetings, please contact

Philippa at [philippaatwoodchurch@btinternet.com](mailto:philippaatwoodchurch@btinternet.com)

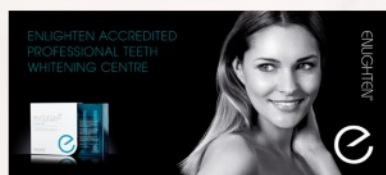
### Surgery Opening Hours

Monday to Friday 9am to 5pm



**Hamstreet  
Dental Clinic**

Welcomes You

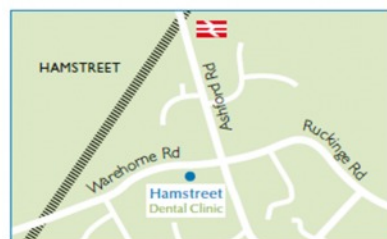


### Where to find us...

Hamstreet Dental Clinic  
Warehorne Road  
Hamstreet  
Kent TN26 2JJ



Find us on facebook



**Tel: 01233 733848**

Email: [hamstreetdentalclinic@gmail.com](mailto:hamstreetdentalclinic@gmail.com)

## Woodchurch Cottage Flowers



We are an artisan florist and flower grower. We grow and sell the most amazing seasonal English flowers. All grown here at our smallholding in Woodchurch in Kent. We are a small flower farm working with nature and the seasons.

**Call or text 07969 449235**

[www.woodchurchcottageflowers.co.uk](http://www.woodchurchcottageflowers.co.uk)





# All Saints Church



Dear Friends,

Well - July was quite a month, with a heatwave lasting quite a few days - I hope you have all managed to cope. As I'm writing this, things are looking a little cooler and damp. I have been keeping in my prayers the farming community and others who work outside, and all who struggle in the heat - I think we need more rain than a little drizzle.



The extreme weather makes us more aware of the impact of global warming on our planet. The Church of England has committed to reducing emissions to net zero by 2030, which will be quite a challenge with lots of historic church buildings which are beautiful but often draughty and not easy to heat. Our new electric heating system in church will help us to reduce our reliance on fossil fuels. We have been provided with an "Energy Footprint Tool" and there is an ECO church scheme with bronze, silver and gold awards which will help us to work towards this target.

If you have an interest in climate change and working to make a difference, then I would love to hear from you. Everything we do in church relies on volunteers, and I would love to find members of our community in Woodchurch who would like to help us with this important work. I look forward to hearing from you if you are interested in supporting us.

Reverend Mike and I have just returned from a lovely couple of weeks away. We enjoyed seeing parts of the UK we have not visited before. We had a great week in a converted railway station house in Tal-y-Cafn in North Wales, surrounded by beautiful mountains, close to the River Conwy and coastal areas. We also visited Mike's family in Hull for a few days, and then we stayed in a caravan in Essex in the Blackwater estuary area. We loved visiting St Peter's Chapel in Bradwell-on-Sea - (built by St Cedd in 654AD!) - a wonderful peaceful place where the surroundings have stayed the same for many hundreds of years.

A place where you can just sit and "be" and feel close to God.

I hope those of you with holidays planned have a time of rest and relaxation (or adventure if that's what you like!). For those of you staying at home, then I hope that you also find some time for rest and enjoyment of our wonderful Kent countryside.

Every Blessing, Sue



## ALL SAINTS CHURCH WOODCHURCH



The Drawtones pay tribute to the great Hammond organists and saxophonists in jazz, funk and soul.  
The band are regulars at Ronnie Scott's Jazz Club, London.

### Saturday, 1st October 2022

Doors open 7pm Concert starts at 7.30pm

**LICENSED BAR and Raffle**

**Tickets £18** available from

<https://www.ticketsource.co.uk/all-saints-woodchurch>

or if you prefer - visit or call **WOODCHURCH HUB** 01233 861381  
(Open Monday-Friday 10.00am-1.00pm Saturday 10.00am-12 midday)

### What's happening at ALL SAINTS CHURCH?

**COMMUNITY COFFEE MORNINGS** - Come along on Tuesdays between 10 am - 12pm. Homemade cakes, chat and laughter. Free secondhand bookstall and a play area for children. Tables inside and out. A warm welcome to everyone.

**JAZZ and BLUES CONCERT** - with the renowned DRAWTONES 1st October

**CHRISTMAS TREE FESTIVAL** - 9-11 December. Early notice of the popular event. Even bigger and better community event this year. Refreshments, entertainment and activities all weekend. Not forgetting Santa's Grotto! Look out for more details next month.

### Contactless Giving

We have now introduced contactless giving to All Saint's Woodchurch. If you would like to donate to help maintain our beautiful church you can do so by scanning this QR code with your smart phone or visit our website [www.bhhw.org.uk/donations/](http://www.bhhw.org.uk/donations/) and click the donate button.



Thank you for your kindness and generosity. Without your help our church would be very different indeed

### Scout and Guide Community Centre AGM

The Annual General Meeting of Woodchurch Scout & Guide Community Centre (WSGCC) & Woodchurch Scout and Guide Groups will take place on Friday September 2nd 2022 7pm at the Community Centre, Lower Road. All welcome

In July Woodchurch WI members had an entertaining talk from Delia Taylor about MGM Musicals. Herself a distant relative of the famous movie producer Cecille B De Mille she kept us spellbound with the history and inside information of MGM studios, providing film clips and insights to behind the scenes activities. MGM Studios was founded by one Marcus Loew, a leading producer of the day. The "lot" covered over 165 acres and included the vast Echo Lake Park where the film "Showboat" was produced. At its peak MGM employed 6,000 people. Born the son of an immigrant, Loew, by being thrifty was able to accrue enough money to purchase a Nickelodeon charging people to come along to watch films. This was the start of a vast empire. He took the risk of investing in the then ailing Goldwyn Mayer Corporation and so MGM was born.

The musical was more than just a hotchpotch of song. The lyrics were interwoven into the narrative to forward the plot or develop the characters. "Meet Me in St Louis" was ground breaking in that it matched the songs to the story. Music, dance, lavish sets, costumes and a light witty script made it a new and exciting genre. Once technology allowed sound and film to be synchronized, the birth of the block-buster musical began. Drama and music were interlaced, and a wave of musicals was born. Productions such as "Oklahoma" and "Meet me in St Louis" are examples whereby songs ("Oh What a Beautiful Morning" and "Have Yourself a Merry Little Christmas") were to endure. Delia told us how Louis Mayer disliked one of the songs in "Wizard of Oz" so much he wanted it to be removed. This caused some friction, however the song remained and is one we all know well - "Somewhere Over the Rainbow"

The MGM studios had the knowledge and expertise of famous directors such as Vincente Minnelli, the Stage Art Director and Stanley Donen himself a dancer and choreographer, plus a plethora of stars including Crosby, Howard Keel, Judy Garland, and Debbie Reynolds. Song writers, musical arrangers, designers, set directors, costumiers all collaborated to make musical movies equal the Broadway Theatre. The film "Seven Brides for Seven Brothers", the poor relation to "Brigadoon" which came out the same year, was made on such a shoestring budget that the costume department bought old quilts to cut up as costumes. Gene Kelly frustratingly broke a toe the day before "East Parade" was due to start filming. He'd kicked at a tuft of grass, little realizing it was concrete. The role went to Fred Astaire! The famous dance scene accompanying "Good Morning" in "Singing in the Rain" starred Donald O'Connor, Gene Kelly and Debbie Reynolds, rehearsals and filming took nine hours. So strenuous was it that Debbie Reynolds had to be carried off the set as she had burst several blood vessels in her feet.

MGM was the leading studio big hit productions for well over a decade. By the mid 1950s sadly leading figures were retiring and stars such as Astaire and Gene Kelly saw their best dancing years wane. More essentially the viewing public's tastes began



to change and MGM finally went into bankruptcy in 2010. It was eventually sold to Amazon for \$8.45 billion.

A big thank you to Delia for such a memorable and informative talk.

Woodchurch WI are very much looking forward to our next get-together on 9 August at Shirkoak Farm for a lovely cream tea!

### **WOODCHURCH ART SOCIETY**

Woodchurch Art Society will soon re-start following Summer Break

We will be starting our Thursday Morning meetings on Thursday 1<sup>st</sup> September. We then meet every Thursday from 10 - 12noon until the 13<sup>th</sup> July 2023.  
(Excluding Dec. 22<sup>nd</sup> and 29<sup>th</sup> 2022 and April 6<sup>th</sup> 2023)

Our exhibition dates for 2023 are:

- Fri 26<sup>th</sup> May      7 pm - 9 pm
- Sat 27<sup>th</sup> May      10.30 am - 4.30 pm
- Sun 28<sup>th</sup> May      10.30 am - 4.30 pm



### **Woodchurch Memorial Hall now has its own website and online booking!**

We're delighted to announce the launch of our new website at [woodchurchhalls.uk](http://woodchurchhalls.uk)  
(and [woodchurchhalls.co.uk](http://woodchurchhalls.co.uk)).

Have a look around. See what you think.  
Request a booking for your event.

#### **Win a bottle of Woodchurch Wine!**

If you spot any errors or improvements, let us know by emailing  
[woodchurchmemorialhall@gmail.com](mailto:woodchurchmemorialhall@gmail.com).

The most helpful suggestion will win a bottle of Woodchurch wine. Judging will be at the end of September.

There's currently a glitch so the site may not display well on some mobile devices. This will shortly be resolved.

Vacancies still exist! If you are seeking to make a valuable contribution to your community why not join the Woodchurch Memorial Hall Trust committee? We are seeking keen individuals who would like to help support and guide the hall complex through the next decade and beyond.

If this could include you and you would like more information please contact us at [enquiries@woodchurchhalls.uk](mailto:enquiries@woodchurchhalls.uk).



## The Six Bells Inn

Six Bells Inn

Summer has arrived, the children have all started their Summer Holidays and the patio and garden are full again of jolly customers of all ages. The extension feels like it has been there forever and the arrival of our Chef and team makes "The Bells" feel complete.

They say everything comes to he that waits and we have all waited with baited breath for the day when we have a talented chef and our wish has come true (and he is always happy too!!)

With Summer comes the decision to start using the BBQ beginning Sunday 31 July from 12 noon which will run alongside our roast dinners (a reduced number of roast meats will be available for the time being while the BBQ is being used).

Drum roll please .....The Weald of Kent Steam Rally is back again this year 6th and 7th August in Woodchurch. An amazing spectacle and the opportunity to see such magical feats of engineering of all shapes and sizes. The sight, the sound and my personal favourite the smell of the Traction Engines makes a visit to the Rally an absolute definite. Hearing some of them coming down the road and pulling up outside of "The Bells" creates an image of what it may have been like in the past.

We are moving our Quiz this month due to a very special event which is taking place on 3 August for two amazing people so please make a note in your Diary for the new Quiz date Wednesday 10 August (please book early to avoid disappointment).

Then at the end of the month another first for us.....our first Beer Festival over the August Bank Holiday Weekend with bands and Beer and fun and Beer and great company and Beer. What a fantastic way to end the month of August.

Woodchurch again is showing what it is like to be an amazing place to live and visit.

See you all soon

Emily and All at "The Bells"



**SPECIAL GUESTS 11AM-12 & ALSO 1PM -2PM**

**TENTERDEN GARDEN CENTRE PRESENTS**

# SUMMER FAMILY FUN DAYS

**WEDNESDAY 17TH AUGUST 10:30AM - 4PM**

**STUPENDOUS SCIENCE FUN!!!**

**BOUNCY CASTLE LIVING WORLD CHALLENGE**

**FACE PAINTING\* ARTS & CRAFTS\***

**ACTIVITY TRAIL\* WITH GUARANTEED PRIZES COMIC BOOK PHOTO BOOTH COMPETITION TO WIN FAMILY MEMBERSHIP TO KENT LIFE**

**BABY & TODDLER SOFT PLAY AREA**

**\*SMALL CHARGES WILL APPLY**

★ [WWW.GROVEWELLGDC.CO.UK](http://WWW.GROVEWELLGDC.CO.UK) ★ 01233 758510 ★ FIND US ON: ★

**APPLEDORE RD, READING ST, NR. TENTERDEN, TN30 7HT**

## WOODCHURCH PLAYERS

### **HOT OFF THE PRESS/ OR SHOULD I SAY PHOTOCOPIER!**

The Woodchurch Pantomime will be 'Snow White & the Seven Dwarfs'. Auditions will be held on Monday 5th and Tuesday 6th September.

7pm for 10 year old and younger/  
7.30pm for adults.  
Venue: The Memorial Hall Annexe.

Apologies that the other auditions had to be cancelled at short notice - sincere and abject apologies if you actually turned up and no-one was there!

Val Smith



# Simple Kent Funerals

Relaxed, flexible, imaginative, economical, caring

Applefield Cottage, Redbrook Street, Woodchurch TN26 3QS

Call Toby on 07806 613297 • [www.simplekentfunerals.co.uk](http://www.simplekentfunerals.co.uk)

We work in an eco-friendly and environmentally-sustainable way and are certified as a net carbon neutral business



## Bonny Cravat

We made it through the heatwave without completely melting, School is officially 'out' for the summer and we can't wait to see you all to enjoy a nice cold one in the sun!

Congratulations to the winning team of our June Quiz, taking home that cash prize of an amazing £211! It was a fantastic night with an astounding 11 teams and only 1 point between 1st & 2nd place!



The next Bonny quiz will be on Tuesday 6th September and we can't wait to see you all again!

Don't forget, our classic car meet takes place on the first Sunday of the month - 7th August.

We also have some live music from 7pm on Saturday 27th August, with the return of 'The Clark Collective'. They proved to be very popular the last time they were here, with great covers from the likes of Arctic Monkeys, stereophonics, the Jam and more.

Bookings and enquiries on 01233 860345  
Leigha - [www.facebook.com/bonnycravat/](https://www.facebook.com/bonnycravat/)



### Friendlies July/August 2022

Saturday 23rd July 2022 14:00 KO

Lenham V Woodchurch First (William Pitt Playing Field, Lenham)

Saturday 30th July 2022 14:00 KO

Charing V Woodchurch First (Charing)  
Woodchurch Reserves v Ticehurst (The Green, Woodchurch)  
Ref Roger Corkhill

Saturday 6th August 2022 11:30 KO

Woodchurch Intra-Squad Friendly (The Green, Woodchurch)  
Ref Ben Marshall

Saturday 13th August 2022 14:00 KO

Woodchurch First v Smarden (The Green, Woodchurch)  
Ref Roger Corkhill

Saturday 20th August 2022 14:00 KO

Tenterden Reserves V Woodchurch (The rec, Tenterden)  
Woodchurch Reserves v Bromley Green Reserves (The Green, Woodchurch)  
Ref Ben Marshall

Saturday 27th August 2022 14:00 KO

Woodchurch First V Fountain (The Green, Woodchurch)  
Ticehurst v Woodchurch Reserves (Ticehurst)  
Ref Ben Marshall

So it's all go for the club now with our games already under way. The league itself kicks off officially on 20th August, but we will have games on the green most Saturdays until 29th May with a bumper season this time around.

We also have our yearly dinner / dance fundraiser on 20th August tickets are still available and please contact Sunel on 07462 008700 if you would like to come along!

## Help Support Woodchurch Museum and have a chance to win up to £25,000

Ashford  
COMMUNITY  
Lottery

Supporting



## WE'VE LAUNCHED OUR LOTTERY PAGE

Buy your tickets from our page - we get 50%

- We now have a Ashford Community Lottery page!
- Support local causes and win prizes of up to £25,000!
- 50% of all tickets sold from our page go to us!
- PLUS 10% goes to other local good causes!
- Tickets only cost £1 per week!
- Support us and win prizes - WIN WIN!

To start supporting, visit:  
[www.AshfordCommunityLottery.co.uk](https://www.AshfordCommunityLottery.co.uk)  
and search for:  
**Life Museum**



Supporters must be 16 years of age or older

## WEALD OF KENT STEAM RALLY

### 6<sup>TH</sup> & 7<sup>TH</sup> AUGUST 2022



Arena Events throughout the day  
Traction Engines • Steam Rollers • Showman's Engines  
Ploughing Engines • Stationary Engines  
Live Demonstration Working Area • Steam Ploughing  
Scale Steam Engines • Passenger Carrying Scale Steam Railway  
Old Time Fun Fair  
Veteran & Vintage Cars and Motorcycles • Tractors & Horticultural  
Historic Commercial and Military Vehicles  
Beer Tent • Food Stalls • Side Shows and Stalls

FREE PARKING ON SITE

**10.00am - 5.00pm**

Adults £10:00 • Seniors / Children £5:00 • Under 3s FREE

Little Engeham Farm • Bethersden Road • Woodchurch • Kent • TN26 3QY



[www.wealdofkentsteamrally.co.uk](https://www.wealdofkentsteamrally.co.uk)



## Thriving Together GARDENING - Update

### Recycling/Upcycling

Thanks to the wood, cardboard, pallets and other items that have been kindly donated to us by Villagers, we are now proud to say we have been able to create many items for use in our 'Thriving Together Gardening' pods and other areas around the Village including:

- Fixing broken benches
- wooden planters
- no-dig beds
- pallet planters
- and most recently our Woodchurch in Bloom wooden planters.



### How are we progressing with our 'Pods'.....?

Pleased to report that the herbs, vegetables and cut flowers at The Old Post Office Coffee Shop and also at the Bonny Cravat 'Pods' are developing well and being put to good use already.



### Where next?

Work has already started to develop more Thriving Together Gardening 'Pods' at Woodchurch CEP School, Woodchurch Surgery and Woodchurch Memorial Hall, so watch this space!

Interested in getting involved in our social gardening at any of our above pods? Please get in touch via [woodchurchinbloom@hotmail.com](mailto:woodchurchinbloom@hotmail.com) or leave your details in Woodchurch HUB for the attention of Woodchurch in Bloom including best way for us to get in touch.

## The Woodchurch 10 & 5 Mile Running Event

Date: Sunday 23<sup>rd</sup> October 2022

This year sees the fourth staging of our village running event. On Sunday morning of 23<sup>rd</sup> October there will be a 1/4 mile run for the littlest of kids and a 1 mile run for any older kids.

At 9:30 am the two main races head off from the green round the village and out into the countryside coming back via Redbrook Street.

For full details and entry into either the 10 mile or the 5 mile, please visit [nice-work.org.uk](http://nice-work.org.uk)



## SUNFLOWER SUMMER CHALLENGE



Judging will take place on 14<sup>th</sup> August!

Reminder that the 3 categories for judging are:

- Which will have the largest "face"?
- Who will grow the tallest?
- Which will have the funniest face?

To take part in our fun competition, please complete the form below and either drop into the HUB in a sealed envelope addressed to Philippa Jones - WIB or email a copy back to [woodchurchinbloom@hotmail.com](mailto:woodchurchinbloom@hotmail.com)

**Please ensure all entries are in by 7th August!**



Name:

Address:

Contact Number:

Enter categories you would like to enter (tick all that apply):

- ☐ The Largest Face
- ☐ The Tallest Sunflower
- ☐ The Funniest Face

**Thank you & good luck!**

## WoodchurchYardTogether ("WYT")

Our next volunteer gardening weekend in the Churchyard is:

**13<sup>th</sup> & 14<sup>th</sup>**

**August**



Keeping in Touch:

Email:

[Philippa@woodchurch.btinternet.com](mailto:Philippa@woodchurch.btinternet.com)

Or follow us on Facebook



Search: 'WoodchurchYard Together'



### Village Lost Property at The HUB

If you find any lost property around the village please bring it to The HUB. We will hold it there waiting to be claimed for four months. For any valuable/important items that we have handed in, we will place notices online, in the Newsletter and on social media. If you have lost something around the Village please let The HUB know as it may have been handed in. Do you recognise any of the items that have recently been handed in?



- Blue Rucksack
- Ladies gold watch - found in Lower Road
- Keys - found in Lower Road

### POP-UP SHOP - Woodchurch Market Garden

Woodchurch Market Garden will be holding a pop-up shop at the Woodchurch Village Green car park on Sunday 21<sup>st</sup> August from 10am to 2pm.



### Garden Proms Concert - 27<sup>th</sup> and 28<sup>th</sup> August At the Jean Mealham Centre, Lower Road

The Jean Mealham Centre Gardens Proms Concerts return for their third year by popular demand.

**This year even bigger and better!**

Featuring music from

- The Ruby Sisterz
- Malcolm Law
- Chris and Jo Powell
- And more tbc.

Tickets available from The HUB and Carley Butchers.

For more information call Richard on 07798 566840



### Items For Future Newsletters

The purpose of the Woodchurch Community Newsletter is to inform the residents of Woodchurch what is happening around our village. We are keen to share as much information as we can. If there is something that you would like to have included in future editions then please send them to:

enquiries@woodchurchhub.uk

- |                      |                        |
|----------------------|------------------------|
| * forthcoming events | * club/society reports |
| * announcements      | * interesting facts    |
| * memorials          | * photos               |
| * adverts            | * etc. etc. etc.       |

### Kestrel Gymnastics Academy

**\*\* Summer Holiday Fun Camp \*\***

This summer we will be running Fun Camps at Kestrel. These camp days will run from 10:30-15:30 and will include activities such as arts & crafts, team games and free play on our gymnastics and trampolining equipment.

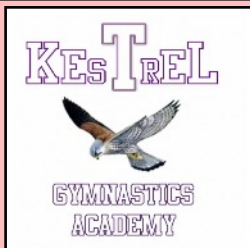
Camp days are open to both kestrel members and non-members, costing £40 per day. Camp dates are as follows;

- Wednesday 27th July
- Friday 29th July
- Monday 1st August
- Wednesday 3rd August
- Friday 5th August
- Wednesday 24th August
- Friday 26th August
- Wednesday 31st August

Packed lunch will be required.

For more information or to book please email [kestrelgymnastics2009@gmail.com](mailto:kestrelgymnastics2009@gmail.com)

For more information about Kestrel Gymnastics Academy please visit our Web site [kestrelgymnasticsacademy.co.uk](http://kestrelgymnasticsacademy.co.uk)





# Everything Outside

Bringing New Life  
To Your Garden

For A Quick Quote From A Company You Can Trust Call

☎ 01580 766 232 ☎ 07795 465 861

## Welcome To Everything Outside

We cover a wide range of services to meet the requirements of our ever-growing client list, if you are looking for a company you can trust to provide a high standard of quality work covering

- ✓ Gardening
- ✓ Garden Design
- ✓ Fencing
- ✓ Clearance
- ✓ Landscaping
- ✓ Hedge Cutting
- ✓ Tree Surgery
- ✓ Digger Work

and much more. Then call our experienced team today on 07795 465 861. To view our full range of services, click on the link below.

Our head office is based in Tenterden, Kent and means we are in the perfect location to proudly service Kent and East Sussex. All our services are tailored to each job we carry out and our team are experienced in all aspects of fencing and landscaping services making us your number one choice for all work you require.

Great Work

Great Reputation

Great Price



### Design, planning & build services

Now offering full 3d design development for your extension, new build or conversion project. Please call us for an introduction to our design services at our Woodchurch office.

01233 861177 [vernacularhomes.com](http://vernacularhomes.com)



## fab feet Professional Foot Healthcare

[www.fabfeethealthcare.co.uk](http://www.fabfeethealthcare.co.uk)

Delivering high quality Podiatric care in the  
comfort of your own home

Providing a reliable and friendly service of professional  
treatments for all of your foot ailments:

Call Michelle on:

**Tel: 01233 731207**

Registered & Insured



O  
U  
R  
  
S  
P  
O  
N  
S  
O  
R  
S



**Nicholls Restores**

Antique furniture restorer & Wood finishing specialist



01233 860130 - [nichollsrestores@btinternet.com](mailto:nichollsrestores@btinternet.com)

### Tenterden Removals

The Professional Removers in the Weald



Secure Storage at a Competitive Price

To help keep the Newsletter free for  
the village please become one of our  
sponsors or give a donation if you can.

[www.woodchurchhub.uk](http://www.woodchurchhub.uk)

or Contact The HUB for more information



Try our professional  
Home News  
Delivery service

New customer introductory  
offers available

Have your paper delivered before you go to work and  
read it with your breakfast!

- ✓ Early delivery - before 6.30am (7.30am at weekends)
- ✓ Excellent communication - phone or email ALWAYS responded to
- ✓ Different billing options available
- ✓ All national and local newspapers available to order
- ✓ All magazines available to order
- ✓ Well established reliable company with over 4,400 customers

Place your order today by telephone on  
**01580 763183**

or email us at [mail@jackiesnews.co.uk](mailto:mail@jackiesnews.co.uk)  
or go to [www.jackiesnews.co.uk/place-your-order](http://www.jackiesnews.co.uk/place-your-order)





EST. Over 35yrs

**Extensions  
General Building  
Property Maintenance  
Brickwork/Stonework Specialist  
Landscaping**

Free Estimates

Chris@cgmbuildersltd.co.uk

[www.cgmbuildersltd.co.uk](http://www.cgmbuildersltd.co.uk)

**KENT**   
**HOLIDAY COTTAGES**

+44 (0) 1233 860 293

info@kentholidaycottages.co.uk



**WOODCHURCH**

SHOP BAR WINE TASTING TOURS

Thursdays to Sundays 11am - 5pm

<http://woodchurchwine.co.uk> tel:01233 860276

You could advertise your company here  
from as little as £10 per month



*Remedial massage therapy.*

**Your Local Woodchurch Massage Therapist**

- Remedial Massage
- Sports Massage
- Holistic Massage

- Ultrasound Therapy
- Electrotherapy

- Injury Treatments & Rehabilitation
- Rehabilitation Taping/Strapping
- Athletic Taping/Strapping



**Bookings - 07799221043**

[www.musclewhisperer.org.uk](http://www.musclewhisperer.org.uk)

Treatment Room - Little Vale TN26 3QW

musclewhisperer@outlook.com



**WE'RE OPEN:**  
MON - FRI: 08:00 - 17:30  
SAT: 08:00 - 12:30

**SO MUCH MORE  
IN YOUR LOCAL  
COUNTRY STORE**

Of course we sell agricultural parts and machinery.

We also sell outdoor and PPE clothing, alongside hand tools, adhesives, hardware, barn paint and much more...

We're online too: [ernestdoeshop.com](http://ernestdoeshop.com)

Hendon Barn, Woodchurch  
Ashford, Kent TN26 3QP  
Tel: 01233 224860

 **ernestDOEpower**  
where you buy with confidence

## Meals Delivery Service now available in Woodchurch

The "meals-on-wheels" style Meal Delivery service has been running successfully in Woodchurch since the beginning of February and now has many Woodchurch residents making regular use of the service.



This is a daily delivery of a 2-course hot meal from 12:15 pm, Monday to Friday (not currently at weekends). You do not need to subscribe to every day.

This service is being organised in Woodchurch by The HUB, in conjunction with the Tenterden Social Hub. Your meal will be delivered piping hot by Woodchurch's own volunteers.

There are still spaces for customers and also a need for reserve drivers.

**For more information please contact The HUB at [enquiries@woodchurchhub.uk](mailto:enquiries@woodchurchhub.uk) or phone 01233 861381 or contact Tenterden Social Hub on 01580 762882.**

### Six Bells Park

After the excitement of the lighting of the beacon, carnival and Platinum Jubilee street party celebrations, life on the Park has settled down.

The walking group continue their walks, around 3 miles, every Sunday, leaving at 10 am.

Residents can be regularly seen gardening, making planters, cycling, joining in with activities organized by the many groups in the village, or just socialising.



Support your local museum- you could win a £50/£30/£20 prize every month.  
For more information please contact Joyce via The HUB - [enquiries@woodchurchhub.uk](mailto:enquiries@woodchurchhub.uk) or 01233 861381

### July 2022 Draw Results

1st prize	£50	Neil McKay	428
2nd prize	£30	Mrs Busby	164
3rd prize	£20	Jenny Styles	151

### Visiting Woodchurch Museum

Our museum is open every Saturday and Sunday from 10 am until 4 pm. It is also open on Bank holidays. You will find the museum manned by knowledgeable volunteers.

### Museum Maintenance - every Wednesday morning

Looking after the village heritage requires constant attention and so volunteers continue to meet at the museum on Wednesdays to garden, repair and maintain. Volunteers continue with the maintenance and gardening tasks on Wednesdays from 9.30 am.

Why not just come along for a chat and/or a cup of tea or coffee, served at 11 am.

Have you ever considered becoming a volunteer or part of the committee? If you would like to join our team please contact The HUB for more information.



## With the continued hot weather across the South East, demand for water is exceptionally high. Combined with very little rainfall, this is putting immense pressure on our supply network.

With the continued hot weather across the South East, demand for water is exceptionally high. Combined with very little rainfall, this is putting immense pressure on our supply network.

Throughout the summer months, we rely on the water stored in our reservoirs to treat, pump and supply millions of additional litres through our network of 9,000 miles of pipes. We can all do our bit to save water; let's make the most of it this summer.

We are currently facing huge challenges supplying water to your taps, caused by the ongoing hot weather and high demand. Burst water pipes, caused by movement in the ground due to extreme lack of rainfall and drying of soil, have also resulted in a number of outages across our network.

This has moved Kent and Sussex to a red status; we need our customers in Kent and Sussex to use water for essential use

only, to ensure we're able to treat, pump and supply enough water for everybody.

For the latest updates visit  
[www.southeastwater.co.uk/about/updates/water-latest](http://www.southeastwater.co.uk/about/updates/water-latest)



For more information about how you can reduce your use of water please visit  
[www.southeastwater.co.uk/help/save-water/how-to-save-water](http://www.southeastwater.co.uk/help/save-water/how-to-save-water)