



# WOODCHURCH COMMUNITY NEWS

*The village community working together*

*May 2022*

Contact us: Telephone 01233 861381 Email [enquiries@woodchurchhub.uk](mailto:enquiries@woodchurchhub.uk) Web [www.woodchurchhub.uk](http://www.woodchurchhub.uk)

**OVER 900 COPIES distributed every month in the Woodchurch area**

## WOODCHURCH Community Calendar



### Weekly events:

#### Saturdays:

**Boot Camp** 9:00am-10:00am on the Village Green

#### Mondays:

**Pilates** 9:00am-10:00am in the Memorial Hall

**Tai Chi and Qigong** 9:45am - 11:45am at the S&G Community Centre, Lower Road

**Knit and Natter** 2:00pm - 3:30pm in the Pop In Lodge

**Beavers** 6:00pm-7:00pm in the S&G Community Centre, Lower Road

**BodyTone** 6:15pm-7:00pm at the Memorial Hall

**BodyFlex** 7:15pm-8:00pm at the Memorial Hall

**Scouts** 7:30pm-9:00pm in the S&G Community Centre, Lower Road

#### Tuesdays:

**Pilates** 9:00am-10:00am, 10:15am-11:15am and 6:00pm-7:00pm in the Memorial Hall

**Coffee Morning** 10:00am-12:00pm in All Saints Church

**Little Leaves Forest School** 10:00am - 12:00pm under 5's Play Group based in Woodchurch

**Community Warden** 1:00pm-3:00pm in the HUB

**Puzzle Club** 2:00pm-4:00pm in the Pop In Lodge, Lower Road

**Blend Youth Cafe** 3:00pm-5:00pm in All Saints Church

**Cubs** 6:00pm-7:00pm in the S&G Community Centre, Lower Road

#### Wednesdays:

**Pilates** 9:00am-10:00am in the Memorial Hall

**Museum Volunteers** 9:30am-12:00pm at the Museum

**Pop-In** 2:00pm-4:00pm Tea and coffee and boot fair marquee at the Jean Mealham Pop-In Centre

**Rainbows** 4:15pm-5:30pm in the S&G Community Centre, Lower Road

**Fish and Chips** 4:30pm-7:30pm in the Village Car Park

**Brownies** 6:00pm-7:00pm in the S&G Community Centre, Lower Road

**Boot Camp** 6:15PM-7:15PM on the Village Green

#### Thursdays:

**Art Society** 10:00am-1:00pm at the Memorial Hall

**BodyFlex** 6:15pm-7:00pm at the Memorial Hall

**BodyTone** 7:15pm-8:00pm at the Memorial Hall Annexe

**Badminton** 7:00pm-11:00pm at the Memorial Hall

**Explorers** 7:30pm-9:30pm in the S&G Community Centre, Lower Road

Previous editions of the Newsletter can be found on The HUB Web site [www.woodchurchhub.UK](http://www.woodchurchhub.UK)



### Other Events:

Sun 1<sup>st</sup> **Morning Worship with Baptism** 11:00am at All Saints Church

**Classic Car meet** 12:00pm at the Bonny Cravat

**Nightingale Walks** 6:00pm to 10:00pm at Boldshaves Gardens daily until 5<sup>th</sup> May

Mon 2<sup>nd</sup> **WLHS "A Schoolgirl's War"** 7:30pm in the Memorial Hall

Fri 6<sup>th</sup> **ROAD CLOSED - Lower Road** for resurfacing until 8<sup>th</sup> May

Sat 7<sup>th</sup> **Woodchurch Yard Together** at All Saints Church continues on Sunday 8<sup>th</sup>

**Woodchurch Carnival Volunteers Day** 10:00am to 4:00pm in the Memorial Hall

Sun 8<sup>th</sup> **ROAD CLOSED - Front Road** for resurfacing until 9<sup>th</sup> May

**Holy Communion** 11:00am at All Saints Church

Mon 9<sup>th</sup> **Hi Kent Hearing Aid Aftercare** 10:00am in the Memorial Hall

**CARM** 10:30am to 12:30pm in the Memorial Hall

Tue 10<sup>th</sup> **Roadworks in Lower Road** - Drainage Cleansing until 12<sup>th</sup>

**PCSO Drop in session** 1:00-2:00pm at The HUB

**WI Resolutions with talk and demonstration on Tai Chi** 7:15pm in the Memorial Hall

Wed 11<sup>th</sup> **Borough Councillors Surgery** 11:00am to 12:00pm at The HUB

**Woodchurch Museum AGM** - 4:00pm in the Memorial Hall

Thu 12<sup>th</sup> - 14<sup>th</sup> **Woodchurch Players "The 39 Steps"** 7:30pm in the Memorial Hall

Sun 15<sup>th</sup> **Morning Worship** 11:00am at All Saints Church

Thu 19<sup>th</sup> - 21<sup>st</sup> **Woodchurch Players "The 39 Steps"** 7:30pm in the Memorial Hall

Sun 22<sup>nd</sup> **Holy Communion** 11:00am at All Saints Church

Mon 23<sup>rd</sup> **ROAD CLOSED - Susan's Hill** for resurfacing until 25<sup>th</sup> May

**Patients Participation Group** 6:00pm in the Memorial Hall Annexe

Tue 24<sup>th</sup> **Annual Parish Meeting** 7:00pm in the Annexe

Thu 26<sup>th</sup> **Woodchurch Parish Council Meeting** 7:00pm - 9:00pm in the Memorial Hall Annexe

Fri 27<sup>th</sup> **Ashford Astronomical Society** - The Light Fantastic at 7:00pm in the Memorial Hall

Sat 28<sup>th</sup> **Art Society Exhibition** 10:30am to 4:30pm in the Memorial Hall. Continues on Sunday 29<sup>th</sup>.



This month the Parish Council had a visit from PC Oliver Welch of Ashford's Community Safety Unit. He spoke to us about a fantastic new messaging system called My Community Voice. This allows local residents and businesses to get in touch with their local policing teams, and also allows the policing teams to send updates and alerts to the community. There are more details of how you can access this in the newsletter. PC Welch explained that the more people who use this service, the more effective it becomes within a community, so please do take a look and sign up if you can!

PC Welch also noted that in rural communities there has been a rise in oil thefts and other fuel. This is unsurprising in a time when costs of fuel are increasing rapidly, but please do review how you store and secure it and be vigilant that oil tanks are currently being targeted.

We also had a talk by the Parish Flagmaster Peter Emery. He gave a very enthusiastic presentation on how we can create and register a Parish emblem and flag, which we could then fly on special days for the community. It would also be something which individual societies can use if they wished to do so, so we feel it's an exciting opportunity to create a more unique identity as a village. To design and register a flag emblem would not cost the PC anything so this is extremely positive in a time when every spend has to be thoroughly considered.

Please get in touch with us and let us know if you have any thoughts or questions on this - do you think it's a good idea? Would you or your society/club be interested in using the village emblem to help identify yourself with Woodchurch? Please let us know your thoughts through our online contact form [www.woodchurchhub.uk/parish-council](http://www.woodchurchhub.uk/parish-council), drop a note into The HUB or by email [clerk@woodchurch-pc.gov.uk](mailto:clerk@woodchurch-pc.gov.uk).

Plans for the Beacon are going well, with construction under way. The Beacon will be erected on the Green this month in preparation to be lit on 2nd June as part of the village's Jubilee celebrations. We are working closely with the Carnival Committee to coordinate this with the other plans for that weekend - make sure you look out for all of the posters so you know what is planned on what day!

Sunday 5th June is the day for street parties, and there are many planned within the village- if you are not aware of one where you live then speak to your neighbours to see if there is one planned. If not, why not plan one? There is more information and a guide on planning a street party at [www.platinumjubilee.gov.uk](http://www.platinumjubilee.gov.uk)

You may have noticed new signs which have been put up by the play area. Please read these next time you are on The Green so you are aware of the rules for using the play area. Dogs are not permitted in this area, so please bear this in mind when bringing children up to use the equipment. Also,

we have had to repair another two slats in the fence. If your children are off to play on The Green then please remind them not to take footballs into the play area or use the external fence as a goal - slats are regularly broken and splinter which is costly to the community and broken slats are a hazard.

We have also received further complaints from the community that dog walkers are not being diligent in clearing up after their dogs. Please make sure you are taking enough bags out with you to keep up with demand- dogs fouling in front gardens and on pavements and this being left has unpleasant consequences for others and can mean that other residents are having to clean it up. This is not fair and is inconsiderate.

Finally, a reminder that Woodchurch Yard Together are having their next weekend event on 7th/8th May. Please do consider heading to the Churchyard to help out! The team at WYT is entirely made up of volunteers and they do a fantastic job of keeping the churchyard neat and tidy and looking its best. As well as the work being completed by volunteers, all expenses (tools, fuel for strimmers and mowers etc) are funded entirely through donations from the community. This is extraordinary and a testament to the amazing support this community gives to keep the village looking its best. If you can't attend but wish to support the WYT team, please contact Philippa on - [philippaatwoodchurch@btinternet.com](mailto:philippaatwoodchurch@btinternet.com) or drop a note or donation to The HUB who will pass it on.



## Be the first to find out what's happening in your area

My Community Voice is a two-way engagement tool brought to you by Kent Police.

Whether you live, work or socialise in Kent or Medway, My Community Voice provides real-time messages directly from our police officers, staff and volunteers, about matters that may affect you or your community.

From crime prevention advice, to the latest updates on scams, appeals or events – this is your opportunity to discuss the issues that affect you directly, and we want to hear them. You control what information you receive and how you receive it, by email, text or voice message.

You can also share messages or reply to us and others if you have information. The survey tool function gives us a greater insight into your specific concerns.



Sign up today or to find out more visit [www.mycommunityvoicekent.co.uk](http://www.mycommunityvoicekent.co.uk)

### Report a crime

Report a non-urgent crime online [www.kent.police.uk/report](http://www.kent.police.uk/report)

Talk to us on LiveChat – available 24/7 [www.kent.police.uk/contact](http://www.kent.police.uk/contact)

In an emergency, if crime is in progress or life is in danger call **999**

If you have a hearing or speech impairment, use our textphone service 18000. Or text us on 999 if you've pre-registered with the emergency SMS service.

[www.kent.police.uk](http://www.kent.police.uk)



## Woodchurch Village Public Rights of Way Country Code

As Spring gets underway, the Bluebells come out and lambs gambol in the fields, we are all continuing to enjoy the many marvellous countryside Public Rights of Way (PROW) footpaths that are within and surround Woodchurch village. It's consequently important to continue to respect other walkers, our natural environment, land owners and farm animals by:

- Parking carefully so as not to block pavements, access to gateways and driveways;
- Checking the PROW route on a map before you start so that you do not get lost;
- Keeping to the marked paths and not wandering off onto private lands and property;
- Leaving countryside gates and property as you find them;
- Following the marked paths and giving way to others where it's narrow;
- Leaving no trace of your visit by taking all your litter home;
- Keeping dogs under effective control, especially near other walkers and farm stock;
- Never leaving dog poo on PROW verges and footpaths, bag it up and take home or place in the many Village red bins. Do not leave full poo bags hanging on trees and bushes (see recent photograph opposite)!
- Following advice and local signs;
- Landowners keeping PROW's that pass over their land open by trimming back trees, hedges and bushes as needed
- Washing your hands after the walk.

Remember you can report a fault to a stile, path, bridge, drain, etc., to the KCC using their websites:

For the countryside public right of ways:

<https://webapps.kent.gov.uk/countrysideaccesscams>

For the village roads and pavements:

[www.kent.gov.uk/roads-and-travel/report-a-problem](http://www.kent.gov.uk/roads-and-travel/report-a-problem)

Alternatively please talk to a member of the WPC or contact the Hub and we would be happy to review the fault and report if necessary. Above all, continue to enjoy our lovely village and countryside.

## How to contact your Parish Council

**In person:** By talking to one of your councillors - details on the Parish Council Web site

**By email:** [clerk@woodchurch-pc.gov.uk](mailto:clerk@woodchurch-pc.gov.uk)

**By phone:** 01233 733994

**Through The HUB:** Place your correspondence in a sealed envelope marked "Parish Council" and deliver to The HUB

**By post to:** Woodchurch Parish Clerk

Keg Barn, Hornash Lane, Shadoxhurst, Kent, TN26 1HX

**Through the contact form on the Parish Council Web site:**

[www.woodchurchhub.uk/parish-council/](http://www.woodchurchhub.uk/parish-council/)

Parish Council meeting dates, agendas and minutes can be found at [www.woodchurchhub.uk/parish-council/](http://www.woodchurchhub.uk/parish-council/)

## DOG OWNERS - please respect our village

Although the majority of dog owners clean up after their dogs, there are a small minority who are inconsiderate and do not. The Parish Council provide special dog waste bins throughout the village centre and, where these are not available, dog waste can be placed in tied bags in the general waste bins. Where neither are available the waste should be taken home and disposed of in household rubbish.

The dog owners who do not clear up are not only antisocial but they are also putting others (especially children) at risk of serious infection. Dog faeces commonly contains Campylobacter, Salmonella, Yersinia and E. Coli and also roundworms. Recently, there has been increased evidence that pets and their stools may be a reservoir for antibiotic-resistant bacteria, posing a new threat to public health.



Who in their right mind would leave their dog faeces hanging on a branch on a public walkway, especially at a height that would be tempting for children to grab. Clearly at least one irresponsible dog owner in Woodchurch recently thought that this was a good idea!

## Upcoming roadworks in and around Woodchurch Information from KCC and one.network

### Temporary Road Closure - Lower Road, Woodchurch 6<sup>th</sup> May - 8<sup>th</sup> May 2022 (3 Days)

Closure in force: Road Closure  
Name: Lower Road, Woodchurch  
Description: 2022 KCC MICRO SURFACING PROGRAMME

### Temporary Road Closure - Front Road, Woodchurch 8<sup>th</sup> May - 9<sup>th</sup> May 2022 (2 Days)

Closure in force: Road Closure  
Name: Front Road, Woodchurch  
Description: 2022 KCC MICRO SURFACING PROGRAMME

### Drainage Cleansing - Lower Road, Woodchurch 10<sup>th</sup> - 12<sup>th</sup> May 2022

Closure in force: Traffic control (stop/go boards)  
Name: Lower Road, Woodchurch  
Description: Drainage Cleansing

### Road Closure - Susan's Hill, Near Gower Farm Barn 23<sup>rd</sup> 25<sup>th</sup> May 2022

Closure in force: Road Closure  
Name: Susan's Hill, Woodchurch  
Description: Installation of electrical cable in the vicinity of Gower Farm Barn.  
Diversion Route: 6.3 Km. About 9 minutes.  
Cuckoo's Pit Lane, Brook Street, Front Road to Susan's Hill.





You are no doubt aware that due “non-determination” two large planning applications for housing developments within Woodchurch are now going to Appeal. As your Parish Council does not have the powers to approve or reject these proposals, we shall continue to influence the Planning Inspectorate by presenting considered material

comments. Each and every Woodchurch residents’ opinion is important on how the Village of Woodchurch is to be developed. Your Parish Council consequently encourages you all to add any further comments to the Planning Inspectorate asap, by using the following methods (making sure that you quote both Appeal Number and Application Number):

- Online: <https://acp.planninginspectorate.gov.uk>
- Email: [east2@planninginspectorate.gov.uk](mailto:east2@planninginspectorate.gov.uk)
- Letter: To The Planning Inspectorate, Temple Quay House, 2 The Square, Temple Quay, Bristol, BS1 6PN, quoting the appeal reference number.

In the event that assistance is needed with managing the online elements, members of the Parish Council and The HUB would be happy to assist.

**Outline Planning Application (21/01284/AS) with all matters reserved except for access into the site. Land between, 82-120 Front Road, Woodchurch.**

For the erection of up to 40 dwellings (including affordable housing), structural planting and landscaping, informal public open space and children's play area, surface water flood mitigation, vehicular access point and associated ancillary works.

Appeal documents available from: <https://planning.ashford.gov.uk/planning/>

Planning Application: 21/01284/AS.

Appeal Ref No: APP/E2205/W/21/3289039.

Appeal Start Date: 30<sup>th</sup> March 2022.

Appellant: Gladman Developments Ltd.

**Note: Comments to be received by the Planning Inspectorate no later than 4<sup>th</sup> May 2022.**

Note: As this is an Outline Planning Application comments on details such as the design of the proposed layout or properties will not be considered by the Planning Inspectorate and they will only be considering an overall view of the site suitability.



**Full Planning Application (21/00624/AS). Land south east of Bridge Close, Appledore Road, Woodchurch.**

Development of 31 dwellings, new access, parking and associated landscaping including 40% affordable housing and self-build plots).

Appeal documents available from:

<https://planning.ashford.gov.uk/planning/>

Planning Application: 21/00624/AS.

Appeal Ref No: APP/E2205/W/21/3289740.

Appeal Start Date: 12th April 2022.

Appellant: Millwood Designer Homes.

**Note: Comments to be received by the Planning Inspectorate no later than 17th May 2022.**





## WOODCHURCH SURGERY UPDATE

After a fabulous Easter weekend that seemed to bring a completely fresh feel to the year, we then get the flurry of hay fever sufferers. The pollens start with the trees and weeds then get supplemented by the grasses. For those suffering a couple of days a week with runny nose and watery eyes then you can either use intra-nasal antihistamines or oral antihistamines, however, oral ones take up to 8 hours longer to have the full effect. For those suffering for 4 days or more a week then regular intra-nasal steroids are indicated for the full duration of the pollen season possibly with regular oral antihistamines in addition. The CCG encourage people to buy these products over the counter where possible.

By properly treating the nose most eye symptoms will settle but on occasion eye drops are useful. Wearing sunglasses can also help reduce eye symptoms. The best advice is to try and avoid the peak pollen times and reduce exposure as much as possible. For a really debilitating attack oral steroids are used for a short period of time. "In the old days..." a steroid injection would be given at the start of the year and lots of people found it really effective, however it is not considered good practice now and very few doctors will do it.

Furthermore, Asthma gets triggered by all the atmospheric changes and allergens. Since 2019 the guidance has steered very strongly away from use of the "blue" inhaler (salbutamol) as regular use of this short-acting reliever promotes unstable airways that can be more susceptible to spasm causing wheeze. On the whole specialists in Asthma would like to see no more than one salbutamol inhaler being prescribed a year. The promotion for good Asthma control lies now with regular use of the "brown" steroid inhaler or the various colours of combination inhalers that have both steroid and a long-acting version of salbutamol.

The last few months have been pretty tough as the world is trying to ease out of Covid and yet March saw one of the highest rates of infection so far. I thought I'd take a look at the stats on the computer and was really staggered that in March we had 2,933 appointments of which 63% were face-to-face which compares to 1824 in the same month in 2019 (82% face-to-face). The dispensary team have been up against it too with Covid and Brexit causing all manner of medication shortages and recalls. Despite the difficulties they have dispensed 11,766 items in March compared to 9001 in 2019. Wrapping around all of that, the reception and admin teams are fielding the increasing work load. It would be lovely to hit the "Pause" button but I can't find one...

Covid 4th Jab at the Surgery - Please call to book in to one of our clinics that we are putting on starting with the 14th May. You need to be over 75 years old or have a serious problem affecting your immunity and have had your last jab at least 3 months ago. It seems a lot of our proactive patients have already had a 4th jab so we are not sure how many clinics we

will need to put on to cater to demand. As always, please let us know if you are housebound and will need a visit instead.

We are all looking forward to a summer that I suspect will be a great lift for the whole of Woodchurch and beyond. Best wishes on behalf of the Surgery - Jack Hickey,

Jack Hickey - GP

### Woodchurch Patients Participation Group (PPG)

Our next PPG meeting is on Monday 23rd May at the Memorial Hall Annexe starting 6pm

**All Woodchurch Surgery Patients are welcome!**

Future PPG Meeting dates:

- Monday 15th August
- Monday 21st Nov

At each meeting we will be joined by representatives from Woodchurch Surgery and a 'Speaker' from a local group/organisation.

If you would like to receive PPG Surgery updates and details of speakers for the meetings, please contact Philippa at

[philippaatwoodchurch@btinternet.com](mailto:philippaatwoodchurch@btinternet.com)



### Surgery Opening Hours

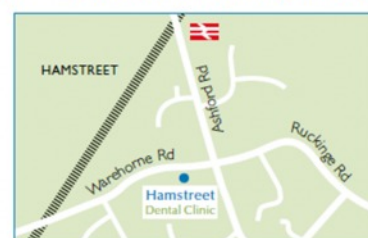
Monday	8.30am to 5.00pm	Thursday	8.30am to 5.00pm
Tuesday	9.00am to 6.00pm	Friday	8.30am to 5.00pm
Wednesday	9.00am to 5.00pm	Saturday and Sunday	closed

### Where to find us...

Hamstreet Dental Clinic  
Warehorne Road  
Hamstreet  
Kent TN26 2JJ



Find us on facebook



Tel: 01233 733848

Email: [hamstreetdentalclinic@gmail.com](mailto:hamstreetdentalclinic@gmail.com)



# All Saints Church



Dear Friends,

Thanks very much to everyone who came along to any of the Holy Week and Easter services last month. It was wonderful to see so many people in the church on Easter Sunday, with such beautiful flowers arranged by our flower team. We were joined by a Ukrainian family who are being hosted in Bethersden, so it was good to be able to welcome them to our community, and we continue to pray for the terrible war in Ukraine.



We have started to collect items for our foodbank once again in church, knowing that many people will be struggling financially at the time with food and petrol prices soaring. We are very grateful if you are able to help with food donations - non perishable items are always welcome, and if you need help then please pop into church and collect what you need. If you don't find what you need then please feel able to call me in absolute confidence and I will organise help. My number is 01233 820266.

We are very pleased to have started our coffee mornings from 10am-12noon on Tuesdays (when the coffee shop in the village is closed) - do pop in and enjoy a cuppa and home-made cake. Our youth café has also started on Tuesdays from 3-5pm, initially for children in Years 5 and 6 and living in Woodchurch - please contact Jessie on [blend.woodchurch@gmail.com](mailto:blend.woodchurch@gmail.com) for more details - we are organising some exciting trips in the Summer holidays with a grant from Kent County Council.

Next month we will be delivering our parish plans for you to look at and provide feedback. Keeping our church open is expensive and we are fundraising all of the time. We are looking at how we use technology to find easy ways to donate, and we now have QR codes below to help you donate. If you have the technology and feel able to help us please scan or click the links below - even the smallest donation is much appreciated.

[A single donation](#)



[A regular donation](#)



THANK YOU FOR YOUR KIND DONATION

Take Care and God Bless

Reverend Sue

[Revsuerose@outlook.com](mailto:Revsuerose@outlook.com), 01233 820266

## [New Fundraising Group !!!!!](#)



Those of you who have watched Queens of Mystery (channel 5) will know that this novel and very different take on light-hearted crime was filmed in and around our very own village. In fact many of the scenes are filmed in, and inspired by Woodchurch. You only have to watch the opening credits to see our church (with its very recognisable spire) and the windmill (although VFX has given it sails) as the camera scans over the village. Why did they choose Woodchurch? Well, because it epitomises an idyllic Kentish village complete with pubs, a white weatherboard windmill, and of course a highly distinctive church.



However, the truth is that behind the scenes our 'perfect English church' is very much in need of not just tender loving care, but also in updating for the 21st Century. Unfortunately this means raising substantial funds if it is to remain useable for future generations.

With that as our intention we have formed a fundraising group in the village, and you will be hearing so much more about us. We have already run a couple of fantastic events, and we have much more planned (see the advert for our wonderful Sound of Brass concert) - but we need your help.

What can you do? Look out for us around the village and in the Community News, support us by attending our events and bringing guests, and if you feel moved to help out or give a little more - that would be great too. We don't want a future episode of the TV series to be 'The case of the missing church' and we need your help to make sure that never happens.

You will be hearing regular updates from us and if you want to help in any way, please contact Rev Sue

## Woodchurch Yard Together ("WYT")

Our next volunteer gardening weekend in the Churchyard is:

7th & 8th



May

Thank you very much for all the recent donations to our WYT funds

Keeping in Touch:

Email:

[Philippa@woodchurch.btinternet.com](mailto:Philippa@woodchurch.btinternet.com)

Or follow us on Facebook



Search: 'WoodchurchYard Together'



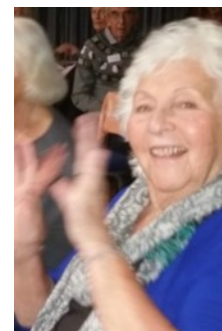
Dr. Gehad Homsey, was the speaker at our April meeting, and thanks to the spring time extra hour of daylight, he was able to negotiate a safe passage from Folkestone to Woodchurch without any lengthy diversions, despite the numerous sets of local roadworks en route. Thus he arrived with time to spare to deliver his thought provoking talk and slide presentation on the subject of Mercy Ships, an American Christian Organisation founded in 1978 by Texan, Don Stephens and his wife. It is a charity which provides hospital ships manned entirely by volunteers, who offer vital free medical and surgical care to the impoverished local inhabitants of western Africa and other poor countries throughout the world. All the doctors and nurses give their time and expertise for free, but a host of other skilled volunteers support their work, by working behind the scenes as cooks, teachers, mechanics, engineers, admin. staff, cleaners - in fact any task that enables the smooth functioning of the ship. Dr. Homsey, who before retirement was an anaesthetist, would regularly do a stint on the original hospital ship, the MV Anastasis (from the Greek word for resurrection). This ship was converted from the ex cruise ship, Victoria, and had three operating rooms on the top deck:- one for head and neck, one for eyes and the third for every other part of the body. Unfortunately, there were no lifts on Anastasis and so patients recovering from recent surgery were transferred to the wards below by a series of pulleys and ropes. Mercifully, this vessel was scrapped in 2007. There are two ships now; the Africa Mercy and more recently, the fleet was enhanced by the addition of the completely modern Global Mercy. Unlike a hospital in a town, the ships have the advantage of being able to move from one port to another and therefore a greater number of patients can access medical care. Certainly for a new, young mother, the arrival of the Africa Mercy in a port near her home meant that a simple 20 minute operation to remove her cataracts, not only restored her sight, but gave her the chance to move from darkness to light and to see her twin babies for the very first time. Thank you, Gehad for enlightening us of the valuable work of the Mercy ships.



Our next meeting, which takes place on Tuesday, 10th May, 2022 at 7.15 pm in the Memorial Hall will be our Resolutions

meeting and this year the resolution selected for discussion concerns ASD & ADHD in Women and Girls. The debate will be followed by a brief demonstration of Tai Chi from a fellow WI member from Wittersham, Ann Simpson. Do join us if you can!

And finally, it is with very great regret that the recent death of Tina Head is announced. Tina had not been a Woodchurch WI member for very long, but we will all really miss her lovely, smiling face at our meetings and we would like to send our very sincere condolences to Roy, her husband.



**carm**  
supporting older people in rural areas

**DO YOU  
LIKE  
HELPING  
PEOPLE?**

**We're looking for volunteers to help get people online.**

**Many people don't have the confidence or the knowledge to use a computer.**

**That means they can't do their shopping online, book NHS appointments or connect with family and friends online.**

**WITH YOUR HELP, YOU COULD  
CHANGE THEIR LIFE!**

**Call us if you would like to get involved.**

**We'll provide all the training and support that you need and we can be flexible around your other commitments.**

**Sessions will be held in Tenterden.**

**Caring Altogether on Romney Marsh**

**WOODCHURCH  
HUB**  
COMMUNITY INFORMATION CENTRE

**Woodchurch HUB now has over  
1,200 Facebook followers**



# Simple Kent Funerals

Relaxed, flexible, imaginative, economical, caring

Applefield Cottage, Redbrook Street, Woodchurch TN26 3QS

Call Toby on 07806 613297 • [www.simplekentfunerals.co.uk](http://www.simplekentfunerals.co.uk)

We work in an eco-friendly and environmentally-sustainable way and are certified as a net carbon neutral business

## The Six Bells Inn

Wow - The Wisteria has bloomed, what an amazing experience for all of the senses, the beautiful flowers, the wonderful fragrance, the sound of the customers out on the patio and the taste of the drinks: What an incredible atmosphere! Spring has arrived and the summer beckons and Woodchurch is again showing what a remarkable village it truly is. We are all so excited with the events that are coming up and being able to share it with everyone.



- Our monthly quiz night here on Wednesday 4th May. (May the force (4th) be with you .....sorry couldn't resist!)
- The extension is very, very nearly finished, with the miraculous news that we have a talented chef coming to join us in early June.

We are so proud of our staff for being so great to work with and we hope that our "traditional" pub atmosphere offers a warm friendly welcome to all of our customers. The future is bright and flourishing especially with the Carnival and all of the other events which are happening over the next couple of months we are all so excited and ready for the summer to begin.

Keep smiling and hope to see you all soon.  
Emily and all at the Six Bells.

# THE SOUND OF BRASS



## ALL SAINTS CHURCH WOODCHURCH

Enjoy an evening of Brass Band Music from classics to a modern repertoire

**Saturday, 11th June 2022**

Doors open 6.30pm Concert starts at 7.00pm

Supporting All Saints Church



**LICENSED BAR**

All proceeds from  
**RAFFLE** supporting **DEBRA**

Tickets **£10** available from

Woodchurch HUB 01233 861381 enquiries@woodchurchhub.uk

# OUTDOOR BOOTCAMP

Varied, challenging & fun!  
All abilities welcome

FROM  
4TH  
MAY

Woodchurch Village Green  
Wednesday 6.15pm

Book your free taster  
[jofurneauxfitness.co.uk/book-a-class](http://jofurneauxfitness.co.uk/book-a-class)

07961 978068

jo@jofurneauxfitness.co.uk



**JO FURNEUX**  
HEALTH + FITNESS COACH

## WOODCHURCH ART SOCIETY IS BACK!

After two long years we are pleased to announce the return of our popular



### ANNUAL ART EXHIBITION



Spring is in the air, so it's time to prepare  
May is the month when we Exhibit and share

Will it be oil or acrylic you race to see  
Or perhaps a cup of tea?

Our Artists are preparing the way  
For a most enjoyable day

So make a date to come our way!

**Woodchurch Memorial Hall**

Please note the new times

**Friday May 27th 7pm - 9pm**

**Saturday 28th May 10.30am - 4.30pm**

**Sunday 29th May 10.30am - 4.30pm**

Refreshments

**FREE ENTRY**





## Woodchurch Local History Society

Our society meets at 7:30pm on the first Monday of the month in the Memorial Hall. At our next meeting which is on Monday 2nd May we are very pleased indeed to welcome Mary Smith who will give an illustrated talk entitled 'A Schoolgirl's War'.

Mary has been the headteacher of Maidstone's Grammar School for Girls and it was during her spell there that she learnt how the school educated and cared for its pupils during World War 2

She will illustrate her talk with numerous watercolour sketches made by the art teacher at the time depicting the life of the girls and staff during air raid warnings. The sketches of life in the 'tunnels' are very charming and show the girls in their underground classrooms, kitchens and eating areas.



Over the years the 'tunnels' had been filled in but Mary was instrumental in leading a campaign to have the underground shelters restored.



I'm sure you will be charmed and inspired by Mary's story.

New members of our society are welcomed as are visitors. Yearly subscription is £10 per year whilst visitors pay £3 at the door. Youngsters who are 16 yrs or younger can enter free at this meeting.

We look forward to seeing you.  
Geoff 01233 860393.

## Bonny Cravat

Firstly we would like to thank everyone who came out to support our first live music night of 2022. The Clarke Collective were absolutely amazing and a good time was had by all.



On that note (no pun intended), to kick start your Jubilee weekend, we will have live music on Thursday 2nd June. Gavin Sage will be here from 7pm, prior to the lighting of the beacon on the Woodchurch green. Gavin Sage is a Jazz/Americana Blues performer and will be out on our lovely terrace performing some wonderful music. Pop in and enjoy a glass of wine in the sunshine before heading down to the green for the lighting of the beacon.

Come on down to see us on Sunday 1st May; Classic cars will be back and we cannot wait to see them all glistening in the sunshine; please do pop in for a drink or book a table with us for a delicious Sunday lunch.

Woodchurch in Bloom will be back at the Bonny on 17th & 18th May to do some more work with our Thriving Together garden and we cannot wait to see what it's going to look like. We hope that it will offer plenty of opportunities for everyone to either try their hand at some gardening or, if you're a more experienced gardener perhaps pass on some of your knowledge to those just wanting to start out.

Quiz night will be taking place on Tuesday 10th May. We once again have a cash roll over so you will be playing to win a minimum of £70! Don't miss out and book in your team now to be in with a chance to win that cash!

We look forward to seeing you all out in our garden over the coming months! Bring on the sunshine...



## **Front Garden Competition**

The theme for this year's competition is the Queen's Platinum Jubilee.

Have fun by planting your front garden with red, white and blue flowers and decorate with bunting, flags or home-made decorations celebrating the Queen's 70 years on the throne.

To coincide with Woodchurch Jubilee celebrations the closing date is 31st May and judging will take place on 2nd June.

Entry details and forms will be available from April online via [www.woodchurchinbloom.com](http://www.woodchurchinbloom.com) or via the HUB



**Help our village grow healthy and happy ~ together**

Come and join us in making our village even more beautiful

email: [woodchurchinbloom@hotmail.com](mailto:woodchurchinbloom@hotmail.com) or visit our website: [woodchurchinbloom.com](http://woodchurchinbloom.com)

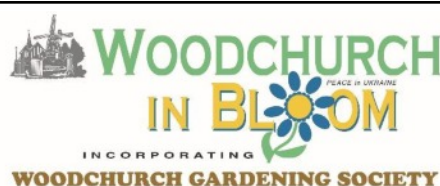
Follow us on:



## Photocopying and Laminating at The HUB

**We can scan, print, copy and laminate A3 pages and can print booklets.**

Photocopies (per side)    A4 b/w - 10p, A4 colour - 15p  
   A3 b/w - 15p, A4 colour - 20p  
Laminating (per sheet)    A4 - 15p, A3 - 25p



## **Sunflower competition 2022**

Our sunflower competition this year will be judged on 14<sup>th</sup> August

Categories this year:

- o The largest sunflower face
- o The funniest sunflower face
- o The tallest sunflower

With the sunflower being Ukraine's national flower, we're encouraging as many as possible to get involved

Look out for entry forms next month!

## **DEC UKRAINE HUMANITARIAN APPEAL**

At the time of writing, a total of **£366** has been collected from our donation boxes around the Village. The money will now be sent to the DEC Ukraine Humanitarian appeal. Thank you very much for all donations



# Everything Outside

Bringing New Life  
To Your Garden

For A Quick Quote From A Company You Can Trust Call

☎ 01580 766 232 ☎ 07795 465 861

## Welcome To Everything Outside

We cover a wide range of services to meet the requirements of our ever-growing client list, if you are looking for a company you can trust to provide a high standard of quality work covering

- ✓ Gardening
- ✓ Garden Design
- ✓ Fencing
- ✓ Clearance
- ✓ Landscaping
- ✓ Hedge Cutting
- ✓ Tree Surgery
- ✓ Digger Work

and much more. Then call our experienced team today on 07795 465 861. To view our full range of services, click on the link below.

Our head office is based in Tenterden, Kent and means we are in the perfect location to proudly service Kent and East Sussex. All our services are tailored to each job we carry out and our team are experience in all aspects of fencing and landscaping services making us your number one choice for all work you require.

Great Work

Great Reputation

Great Price

O  
U  
R  
  
S  
P  
O  
N  
S  
O  
R  
S



**Nicholls Restores**

Antique furniture restorer & Wood finishing specialist



01233 860130 - nichollsrestores@btinternet.com

## Tenterden Removals

The Professional Removers in the Weald



Secure Storage at a Competitive Price

## Hinges&Brackets

PROPER IRONMONGERS

Unit 12 Evegate Business Park,  
Station Road, Smeth,  
Ashford. TN25 6SX

**Martin Davey**

Director

Tel: 01233 645249

Email:

post@hingesandbrackets.co.uk

Website:

www.hingesandbrackets.co.uk

Proper ironmongers – because we want to sell proper stuff that works.

# Need a planning application?



Call 01233 861177  
vernacularhomes.com

# fab feet

Professional Foot Healthcare

www.fabfeethealthcare.co.uk

Delivering high quality Podiatric care in the  
comfort of your own home

Providing a reliable and friendly service of professional  
treatments for all of your foot ailments:

Call Michelle on:

**Tel: 01233 731207**

Registered & Insured



## Try our professional Home News Delivery service

New customer introductory  
offers available

Have your paper delivered before you go to work and  
read it with your breakfast!

- ✓ Early delivery - before 6.30am (7.30am at weekends)
- ✓ Excellent communication - phone or email ALWAYS responded to
- ✓ Different billing options available
- ✓ All national and local newspapers available to order
- ✓ All magazines available to order
- ✓ Well established reliable company with over 4,400 customers

**Place your order today by telephone on  
01580 763183**

or email us at mail@jackiesnews.co.uk  
or go to www.jackiesnews.co.uk/place-your-order





07944 940 182

EST. Over 35yrs

**Extensions  
General Building  
Property Maintenance  
Brickwork/Stonework Specialist  
Landscaping**

Free Estimates



Chris@cgmbuildersltd.co.uk

[www.cgmbuildersltd.co.uk](http://www.cgmbuildersltd.co.uk)

**KENT**   
**HOLIDAY COTTAGES**

+44 (0) 1233 860 293

info@kentholidaycottages.co.uk



**WOODCHURCH**

SHOP BAR WINE TASTING TOURS

Thursdays to Sundays 11am - 5pm

<http://woodchurchwine.co.uk> tel:01233 860276

**A big "Thank You" to all of our  
sponsors, who help keep this  
Newsletter free of charge**



*Remedial massage therapy.*

**Your Local Woodchurch Massage Therapist**

- Remedial Massage
- Sports Massage
- Holistic Massage

- Ultrasound Therapy
- Electrotherapy



- Injury Treatments & Rehabilitation
- Rehabilitation Taping/Strapping
- Athletic Taping/Strapping

**Bookings - 07799221043**

[www.musclewhisperer.org.uk](http://www.musclewhisperer.org.uk)

**Treatment Room - Little Vale TN26 3QW**

[musclewhisperer@outlook.com](mailto:musclewhisperer@outlook.com)



**SO MUCH MORE  
IN YOUR LOCAL  
COUNTRY STORE**



Of course we sell agricultural parts and machinery.

We also sell outdoor and PPE clothing, alongside hand tools, adhesives, hardware, barn paint and much more...

We're online too: [ernestdoeshop.com](http://ernestdoeshop.com)

Hendon Barn, Woodchurch  
Ashford, Kent TN26 3QP  
Tel: 01233 224860

 **ernestDOEpower**  
where you buy with confidence





# WOODCHURCH CARNIVAL



## NEEDS YOU!

### VOLUNTEERS DAY Saturday 7th May 2022

10am - 4pm in the

### Woodchurch Memorial Hall

Sign up to be a volunteer or just come along to see the full plans for the **Queen's Platinum Jubilee Carnival**

Refreshments available

*All volunteers will be sized for their unique T-Shirt and matched to their task on the day.*



**Every volunteer receives a unique T-Shirt to keep and wear on Carnival day**

The dream that we set for Woodchurch Carnival 2022 is coming like a steam train, with Hobbs parker signs up and other posters being scattered around the village. The team have worked hard to bring a fun filled day and a lot of you are really getting into the swing for the Platinum Jubilee celebrations 4th June.

We have had such a response to the day we have brought the start forward for the parade to 12:00, we have a special guest to open the start of the parade, the clue to who they are we are keeping it retro?

We have so much on for all we hope to get many of you involved through the day, we are holding an open day in the Memorial Hall 7th May 10:00 am to 2:00 pm, why not pop in for update and see if you can volunteer some support and help?

The list all of the events for the day is far too big to cover here but you can purchase souvenir programs soon with a chance to win the programme prize draw. The fun fair and fun stalls (including a carousal and helter skelter) will be ticketed, and tickets will soon be on sale from Hub and on the day also from the bar and information stand.

The parade is really taking shape and we are honoured to have the band of the Princess of Wales Royal Regiment joining us for the day.

In the band tent on The Green there will be 5 bands, Katie & Clive, the washed-up jug band, The coffin Dodgers, Brad

Pittance and the Pirates and Burst, a huge variety of music and something for everyone.

The events in the arena are still coming together, and we have some spaces if anyone wants to show off their group or organization.

Woody the mascot is soon to make his entrance and you can purchase your badges from the pubs and coffee shop, all the money supports us further with the carnival.

At the close of the day there will be a laser show onto the church and once the carnival on The Green has closed at 8:00 pm the local pubs will have more entertainment to continue the fun into the night.

Other events taking place over the Jubilee weekend includes the national beacon lighting on The Green. We are encouraging everyone to organise local front garden parties around the village on Sunday the 5th June.

We have tried to make the weekend affordable with subsidised ticket prices and as ever reasonable food and drink prices.

If you haven't yet seen the Carnival Website - go to [www.woodchurchcarnival.uk](http://www.woodchurchcarnival.uk) to find out more.

We would like to thank everyone involved in making this event possible, including The National Lottery, Ashford Borough council, Woodchurch Parish Council and all of you for your support.



Supported by



Supported by



[www.woodchurchcarnival.uk](http://www.woodchurchcarnival.uk)  
[enquiries@woodchurchcarnival.uk](mailto:enquiries@woodchurchcarnival.uk)





# WOODCHURCH CARNIVAL

Celebrating the  
**Queen's Platinum Jubilee**  
4th June 2022 12 noon 'til late



**Carnival Parade**  
Fabulous Rides and Games including  
**Helter Skelter**  
**Carousel**  
**Dog Show**  
and much, much more  
**Gift & Produce Stalls**  
**A host of Refreshments**  
**Vintage Tea & Beer Tent**  
**5 live Bands**  
**Spectacular Laser Light Show**

...so don't miss out on what's going to be a day to remember for all the family!

Supported by  
**COMMUNITY FUND**  
Supported by  
**Kent County Council**

**Woody WOODCHURCH CARNIVAL**

[www.woodchurchcarnival.uk](http://www.woodchurchcarnival.uk)  
[enquiries@woodchurchcarnival.uk](mailto:enquiries@woodchurchcarnival.uk)

Supporting adults to  
improve and maintain  
their wellbeing  
in Ashford, Canterbury and Swale



Be Active

Keep Learning

Give

Connect

Take Notice

Care for the Planet

Heritage Visits

Computer Skills

Walking Groups

Men's Sheds

**Socially Engaged**

Photography

Arts

Community Allotments

Gardening Clubs

Exercise Classes

**IMAGO**

Your local charity  
Building Resilience,  
Facilitating Change  
Since 1964



Wellbeing Matters Plus is a service of Imago Community. Registered charity number: 1108388

## Swinging GO'S Night

**Saturday 11th June**

**Jean Mealham Pop-in Centre,  
Lower Road,  
Woodchurch,  
TN26 3SQ**

**Doors Open - 7.30PM**

**Band- THE BACKBEATS - 8.00pm - 11.00PM**  
([www.thebackbeats.co.uk](http://www.thebackbeats.co.uk))

**Tickets**

**£7 for Adults**

(Accompanied children small donation)

Tickets available from our website : [www.rdawoodchurch.co.uk](http://www.rdawoodchurch.co.uk)

Or

**Ticket Collection from : Woodchurch Hub, Front Road, Woodchurch,  
TN26 3PA**

Or

**Jean Mealham Pop-In Centre, Lower Road, Woodchurch TN26 3SQ**

**Wellbeing Matters Plus** is a new service offering and developing community-based opportunities for individuals aged 55 plus, and adults with complex health needs, living in Ashford, Canterbury or Swale.

We help people feel connected and less lonely, offering support to improve wellbeing and independence, whilst ensuring the individual's voice is heard and valued.

Opportunities will be based on the 6 Ways to Wellbeing:

- **Be Active:** exercise sessions, gardening, yoga, tai-chi, dance, postural stability, sporting activities
- **Keep Learning:** computer and social media classes, ESOL, U3A, arts, crafts, adult education, employment advice
- **Give:** volunteering, gardening schemes, driving, befriending, community events
- **Connect:** day centres, lunch clubs, sewing circles, afternoon teas, social clubs, CAMEO wellbeing group
- **Take Notice:** walking groups, heritage visits, photography, bird watching, mindfulness
- **Care for the Planet:** energy efficiency, environmental clean-ups, community allotments

Get in touch to find out more, or go to our website  
or scan the QR code to make a referral

0300 373 0560  
[wellbeingmattersplus@imago.community](mailto:wellbeingmattersplus@imago.community)  
[www.imago.community](http://www.imago.community)



Wellbeing Matters Plus, delivered by Imago, is part of Kent County Council's Universal Wellbeing Service. Imago supports other providers to develop their opportunities and services to meet demand.

## News from Woodchurch Village Life Museum (WVLM)

The museum opened its doors to visitors, for the first time this year on Friday April 15. It was pleasing to see visitors taking advantage of the good weather and showing an interest in our beautiful museum. Comments were very complimentary.



The museum will be open every weekend from 10:00 until 16:00 and manned by volunteers who have a wealth of knowledge. It will also be open on Bank holidays.



There are temporary exhibitions which change each year and there is also an opportunity for children to collect badges by joining the Kent wide scheme, Wheels of Time.

Why not pay us a visit on your next free weekend. Entrance is free, donations welcomed.



## MUSEUM 150+ Lottery Draw



Support your local museum- you could win a £50/£30/£20 prize every month. A ticket now costs £6 for 6 months. For more information please contact Joyce via The HUB - [enquiries@woodchurchhub.uk](mailto:enquiries@woodchurchhub.uk) or 01233 861381

### March 2022 Draw Results

1st prize	£50	Jonathan Hays	1057
2nd prize	£30	Sheona Taylor	1124
3rd prize	£20	Janet Buss	190

## Are you interested in local history ?

If you are, Woodchurch Museum is looking to expand their curatorial team. You do not need to have prior experience as a museum curator - just an interest in helping to preserve our local history. You will be part of a team of volunteers helping to develop our new displays, interpret our extensive collection and looking after more than a thousand years of Woodchurch heritage.

If you are interested and would like to find out more, please contact Joyce, Gina or Charles through The HUB at **01233 861381** or to [enquiries@woodchurchheritagetrust.uk](mailto:enquiries@woodchurchheritagetrust.uk)

We love the magical setting of Woodchurch so much we want to extend a discount of 10% off your meal at our Patio Takeaway (Grass fed burgers, veggie and vegan) when you visit the Rare Breeds Centre and live in a Woodchurch postcode.



Book online in advance to attend.

[www.rarebreeds.org.uk](http://www.rarebreeds.org.uk)

You can use the discount as many times as you like but proof of postcode required when placing order.

**Offer open until 1 September 2022.**

## Supporting The HUB

The HUB is a not-for-profit organisation that exists to help support the residents of Woodchurch, the village clubs and societies and also village businesses. It is managed entirely by volunteers. The Newsletter is partially funded by advertising and the rest through fundraising and voluntary donations. If you would like to make a donation to help support The HUB then please go to The HUB web site and click the the "Donate" button. [www.woodchurchhub.uk](http://www.woodchurchhub.uk)

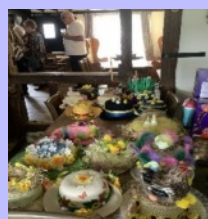
## Six Bells Residents Association

Easter Monday, April 18, saw an array of Easter Bonnets at the Six Bells Pub as the residents congregated for their Easter buffet and Easter bonnet competition.

The weather was good, so everyone had the opportunity to sit outside, chat with friends and enjoy the sunshine.

Thank you to all who took part and made this a most enjoyable experience.

- The lady's bonnet first prize went, posthumously, to Tina Head.
- The man's bonnet first prize went to Roger Jennings
- The lady's bonnet second prize went to Tricia Savage.
- The Man's bonnet second prize went to Michael Wright.





### Update from Woodchurch Windmill

The latest communication with Ashford Borough Council on progress on the repair and refurbishment of the mill would appear to indicate that they still have neither a plan or budget to commence the works. The property department who manage the asset (windmill) appear to be having internal discussions but are still not in a position to communicate any information to us.



Mel Bailey - Chairman FoWW



## A.G.M.

for

### Woodchurch Village Life Museum

to be held in

### The Memorial Hall, Front Road

on Wednesday 11<sup>th</sup> May

**Come and join us for tea and cakes at**



**4pm**



[www.woodchurchheritagetrust.uk](http://www.woodchurchheritagetrust.uk)

### Meals Delivery Service now available in Woodchurch

The "meals-on-wheels" style Meal Delivery service has now been running successfully in Woodchurch since the beginning of February. This is a daily delivery of a 2-course hot meal from 12:15 pm., Monday to Friday (not currently at weekends). You do not need to subscribe to every day.

This service is being organised in Woodchurch by The HUB, in conjunction with Tenterden Social Hub. Your meal will be delivered piping hot by Woodchurch's own volunteers. There are still spaces for customers and also a need for reserve drivers.

**For more information please contact The HUB at [enquiries@woodchurchhub.uk](mailto:enquiries@woodchurchhub.uk) or phone 01233 861381 or contact Tenterden Social Hub on 01580 762882.**

### Woodchurch Morris Diary of events 2022

**May 1st All Day May Day Folkestone**

**May 14th 12.00 pm This Ancient Boro' Tenterden**

**May 27th 7.30 pm The Bell at Ivychurch**

**June 2nd tba Jubilee Beacon Lighting, Woodchurch**

**June 4th All Day Woodchurch Carnival**

**June 18th 12.00 pm KESR Beerfest Tenterden**

**June 24th 7.30pm The Six Bells, Woodchurch**

**July 9th Trip Away**

**July 15th 7.30 pm Old Dairy Brewery Tenterden**

**July 30th 12.00 pm Romney Marsh Country Fayre**

**Aug 7th tba Broadstairs**

**Aug 20th tba Tractorfest**

**Sep 2nd 7.30 pm The Brewery Yard, Rye**

**Sep 16th 7.30 pm Shepherd & Crook, Burmarsh**

**Sep 24th tba Supporting Ben Hammond Charity tba**

**Oct 1st All Day Tenterden Folk Festival**

**Oct 21st 7.30 pm Trafalgar Night, The Bell Ivychurch**



### Bonny Cravat - Part-time Experienced Chef Wanted

Part-time experienced Chef/Cook position available. Might suit a retired Chef or a person looking for part-time hours only.

Ideally we require Wednesday, Thursday and Saturdays covered. Approx 25hrs per week. Fantastic hourly rate plus tips for the most suitable candidate.

Experienced, honest and reliable are essential to the position. For more information email us at [thebonnycravatpub@gmail.com](mailto:thebonnycravatpub@gmail.com)

# Picnic for Dementia



**Celebrate Dementia Action Week by having a picnic between 16<sup>th</sup>-22<sup>nd</sup> May**

Simply enjoy your own event with work colleagues, friends and family and post your photo to show your support. Also, please share each other's photos to spread the fun more widely. Together we can increase public understanding and make our communities more dementia-friendly. #picnic4dementia



## Village Lost Property at The HUB

If you find any lost property around the village please bring it to The HUB. We will hold it there waiting to be claimed for four months. For any valuable/important items that we have handed in, we will place notices online, in the Newsletter and on social media. If you have lost something around the Village please let The HUB know as it may have been handed in.



## Items For Future Newsletters

The purpose of the Woodchurch Community Newsletter is to inform the residents of Woodchurch what is happening around our village. We are keen to share as much information as we can. If there is something that you would like to have included in future editions then please send them to:

[enquiries@woodchurchhub.uk](mailto:enquiries@woodchurchhub.uk)

- \* forthcoming events
- \* announcements
- \* memorials
- \* adverts
- \* club/society reports
- \* interesting facts
- \* photos
- \* etc. etc. etc.



# WEALDEN LITERARY FESTIVAL

**25<sup>th</sup> & 26<sup>th</sup> June**

A host of wonderful new events have been added to the programme for this summer's Wealden Festival, taking place over the weekend of 25 & 26 June. Head over to our website to browse the full programme, which you can also explore at <https://wealdenliteraryfestival.co.uk/wealden-2022>

In a unique event, Jackie Morris, the acclaimed author, artist and co-creator with Robert Macfarlane of *The Lost Words* and *The Lost Spells*, will be painting live to original soundscapes of the natural world mixed by the renowned wildlife recordist, Chris Watson.

Two extraordinary talents share their enchanting encounters with wild birds. Charlie Gilmour, author of the best-selling memoir, *Featherhood*, speaks with Hannah Bourne-Taylor, author of one of this year's most talked about works of nature writing, *Fledgling*.

Professor Seirian Sumner will also be with us to talk about *Endless Forms*, her awe-inspiring account of the fascinating world of wasps.

We've also been busy adding to our bespoke children's programme, featuring talks from children's authors and illustrators, outdoor events, and arts/crafts activities designed to encourage the next generation to discover more about the world around them.

For general enquiries and booking tickets [hello@wealdenliteraryfestival.co.uk](mailto:hello@wealdenliteraryfestival.co.uk)

To speak to one of the team call **01233 770878**

