



# WOODCHURCH COMMUNITY NEWS

*The village community working together*

*June 2022*

Contact us: Telephone 01233 861381 Email enquiries@woodchurchhub.uk Web www.woodchurchhub.uk

**OVER 900 COPIES distributed every month in the Woodchurch area**



**Come celebrate the Queen's Jubilee Bank Holiday in Woodchurch**  
**Three days of celebration on The Green and around the village**

## **Day 1 - Thursday 2<sup>nd</sup> June - Beacon lighting on The Green**

From 7:00 pm	Live band, Morris Men, Food and Bar
9:35 pm	Playing of "Diu Regnare"
9:40 pm	Playing of "Majesty"
9:45 pm	Lighting of the beacon

## **Day 2 - Saturday 4<sup>th</sup> June - Woodchurch Carnival**

12:00 midday	Carnival opening and parade
1:00 pm	Activities on The Green begin including Live music, displays in the arena, Teddy Bears Picnic , Dog Show
5:00 pm	Award presentations and Raffle Draw
10:00 pm	Laser Show on All Saints Church

## **Day 3 - Sunday 5<sup>th</sup> June - Woodchurch Street Parties**

**Around the village throughout the day**



# WOODCHURCH Community Calendar



Previous editions of the Newsletter can be found on The HUB Web site  
[www.woodchurchhub.UK](http://www.woodchurchhub.UK)



## Weekly events:

Saturdays:

**Boot Camp** 9:00am-10:00am on the Village Green

Mondays:

**Pilates** 9:00am-10:00am in the Memorial Hall

**Tai Chi and Qigong** 9:45am - 11:45am at the S&G Community Centre, Lower Road

**Knit and Natter** 2:00pm - 3:30pm in the Pop In Lodge

**Beavers** 6:00pm-7:00pm in the S&G Community Centre, Lower Road

**BodyTone** 6:15pm-7:00pm at the Memorial Hall

**BodyFlex** 7:15pm-8:00pm at the Memorial Hall

**Scouts** 7:30pm-9:00pm in the S&G Community Centre, Lower Road

Tuesdays:

**Pilates** 9:00am-10:00am, 10:15am-11:15am and 6:00pm-7:00pm in the Memorial Hall

**Coffee Morning** 10:00am-12:00pm in All Saints Church

**Little Leaves Forest School** 10:00am - 12:00pm under 5's Play Group based in Woodchurch

**Community Warden** 1:00pm-3:00pm in the HUB

**Puzzle Club** 2:00pm-4:00pm in the Pop In Lodge, Lower Road

**Blend Youth Cafe** 3:00pm-5:00pm in All Saints Church

**Cubs** 6:00pm-7:00pm in the S&G Community Centre, Lower Road

Wednesdays:

**Pilates** 9:00am-10:00am in the Memorial Hall

**Museum Volunteers** 9:30am-12:00pm at the Museum

**Over 60s Pop-In** 2:00pm-4:00pm Tea and coffee and boot fair marquee at the Jean Mealham Pop-In Centre

**Rainbows** 4:15pm-5:30pm in the S&G Community Centre, Lower Road

**Fish and Chips** 4:30pm-7:30pm in the Village Car Park

**Brownies** 6:00pm-7:00pm in the S&G Community Centre, Lower Road

**Boot Camp** 6:15PM-7:15PM on the Village Green

Thursdays:

**Art Society** 10:00am-1:00pm at the Memorial Hall

**BodyFlex** 6:15pm-7:00pm at the Memorial Hall

**BodyTone** 7:15pm-8:00pm at the Memorial Hall Annexe

**Badminton** 7:00pm-11:00pm at the Memorial Hall

**Explorers** 7:30pm-9:30pm in the S&G Community Centre, Lower Road

## Other Events:

Thu 2<sup>nd</sup> **Drain Cleaning - Lower Road.** Traffic control boards. Continues on Fri 3<sup>rd</sup>

**Beacon Lighting on The Green** 9:45pm. Event begins 7:00pm

Fri 3<sup>rd</sup> **Road markings on Front Road** - delays possible

Sat 4<sup>th</sup> **Woodchurch Carnival** From 11.00am

Sun 5<sup>th</sup> **Queens Jubilee Street Parties**

**Morning Worship with Baptism** 11:00am at All Saints Church

**Classic Car meet** 12:00pm at the Bonny Cravat

Mon 6<sup>th</sup> **CARM** 10:30am to 12:30pm in the Memorial Hall

**WLHS "Ecclesbourne Glen"** 7:30pm in the Memorial Hall

Wed 8<sup>th</sup> **ROAD CLOSED - Boldshaves Lane.** Continues on Thursday 9<sup>th</sup>

**Borough Councillors Surgery** 11:00am to 12:00pm at The HUB

Sat 11<sup>th</sup> **"Woodchurch Yard Together"** all weekend at All Saints Church

**Snowdown Colliery Band in concert** at All Saints Church 6:30pm

**Swinging 60s Night** at the Pop-In 7:30pm

Sun 12<sup>th</sup> **Morning Worship** at All Saints Church 11:00am

**Newspaper collection** by Woodchurch Scouts

Thu 14<sup>th</sup> **W.I. "Laura Ashley - an inspiring Woman"** at the Memorial Hall 7:15pm

Sat 18<sup>th</sup> **ROAD CLOSED - Lower Road.** Resurfacing. 2 days - Continues on Sunday 19<sup>th</sup>

Sun 19<sup>th</sup> **Morning Worship** 11:00am at All Saints Church

Thu 23<sup>rd</sup> **Parish Council Meeting** 7:00pm in the Annexe

Fri 24<sup>th</sup> **Ashford Astronomical Society** - "Learning to fly in space" at 7:00pm in the Memorial Hall

Sat 25<sup>th</sup> **Wealden Literary Festival** all weekend at Boldshaves Gardens

Sun 26<sup>th</sup> **Wealden Literary Festival** all weekend at Boldshaves Gardens

**Holy Communion with Baptism** 11:00am at All Saints Church

Wed 29<sup>th</sup> **Brownies and Guides Open Evening** 6:00pm - 8:00pm at the S&G Community Centre

**The Full Community Calendar can be found at**  
[www.woodchurchhub.uk/community-calendar](http://www.woodchurchhub.uk/community-calendar)



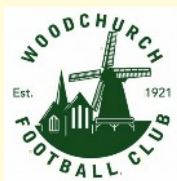
**The Newsletter team would like to thank all of our volunteers for their help in producing and distributing the Newsletter each month.**

The team is now seeking additional help in the creation and editing of the Newsletter each month. No programming or publishing experience is required as the publishing software we use is easy to use and training will be given. Access to a Windows PC would be an advantage, although we do have the software installed on the PC in The HUB. Please contact The HUB for more information.



## Football

The Parish Council would like to congratulate Woodchurch Football Club for becoming league champions. A great achievement and the village is proud.



## Goal posts

It is good to see families using the remaining 5-a-side goal post on the green. As you will recall, until quite recently, there used to be a pair - but one of the goal posts was stolen earlier this year. The Parish Council will explore options for its replacement as funds become available.

## Play Area

As some of the regular users of the Play Area on The Green will have noticed the playground surface beneath the small swings is beginning to break up. Since the play area was fully refurbished in 2020 this has been an ongoing issue as the recommended contractor that was used did a poor job when laying the surface. When this first became apparent, they did come back on several occasions to repair areas that started to break up, however during the pandemic they ceased trading. With a new area beginning to break up the Parish Council are now exploring other options to ensure that the play area remains safe to use.

## The Green

The recent combination of rain and hot weather has resulted in the grass on the green growing at a very rapid rate. The main area of the playing field is cut regularly by our mowing contractors however despite this some of the more fertile areas of the green quickly develop lush tufts. These are being addressed by our village groundsman on a regular basis.

## Beacon

Following requests from village residents the village has erected a village beacon in time to celebrate the Queens Platinum Jubilee. The beacon will be lit at 9:45 pm on Thursday 2nd June - a synchronised lighting with hundreds of beacons throughout the UK and Commonwealth. Please come along to the lighting - The celebrations will start at 7pm with live music from "The Steelworks", dancing from Woodchurch Morris Men, a licensed bar provided by The Six Bells Inn and a BBQ provided by the Woodchurch Football Club.

## Carnival

A massive thank you to the Carnival Committee for all of their hard work in bringing Woodchurch Carnival back to the village. Most of the meticulous preparation is (and will remain) unseen by the village but the massive effort that has been put in by a relatively small number of people will ensure that the Carnival is a success. We just need the good weather to make the day perfect.



## How to contact your Parish Council

**In person:** By talking to one of your councillors - details on the Parish Council Web site

**By email:** [clerk@woodchurch-pc.gov.uk](mailto:clerk@woodchurch-pc.gov.uk)

**By phone:** 01233 733994

**Through The HUB:** Place your correspondence in a sealed envelope marked "Parish Council" and deliver to The HUB

**By post to:** Woodchurch Parish Clerk

Keg Barn, Hornash Lane, Shadoxhurst, Kent, TN26 1HX

**Through the contact form on the Parish Council Web site:**

[www.woodchurchhub.uk/parish-council/](http://www.woodchurchhub.uk/parish-council/)

## Upcoming roadworks in and around Woodchurch

Information from KCC and one.network

### **Drainage Cleansing - Lower Road, Woodchurch** **30<sup>th</sup> May - 1<sup>st</sup> June 2022**

Closure in force: Traffic control (stop/go boards)  
Name: Lower Road, Woodchurch  
Description: Drainage Cleansing

### **Roadworks, delays possible - Front Road, Woodchurch** **1<sup>st</sup> June 2022**

Closure in force: Traffic control (stop/go boards)  
Name: Front Road Road, Woodchurch  
Description: Roadmarkings post resurfacing

### **Public Event - Carnival Parade, Woodchurch** **4<sup>th</sup> June 2022 (1 Day)**

Closure in force: Temporary restrictions  
Name: Lower Road, The Green, Front Road, Woodchurch

### **Road Closure - Boldshaves Lane, Woodchurch** **8<sup>th</sup> - 9<sup>th</sup> June 2022**

Closure in force: Road Closed  
Name: Boldshaves Lane, Woodchurch  
Description: KCC Repair collapsed drain opposite the oast house

### **Roadworks, Road Closed - Lower Road, Woodchurch** **18<sup>th</sup> - 19<sup>th</sup> June 2022**

Closure in force: Road Closed  
Name: Lower Road Road, Woodchurch  
Description: KCC 2022 Micro Resurfacing Programme



## WOODCHURCH SURGERY UPDATE

The news that we are singing from the rooftops is that Henrique Lourenco, our GP trainee, has passed his final exams with an outstanding 82% score. Subject to paperwork he will officially be signed off at the end of June and then hopefully he will be working as a GP at the surgery for the next few months at least.

As a PCN we have a new administrator, Georgia, and a new Social Prescriber, Sharon. The team continues to grow fast in response to the rising population and the increasing demands of the NHS on primary care.

As the glorious weather approaches in time for the Jubilee celebrations I keep thinking of the lobsters that we usually see as people celebrate the Bank Holidays. For some reason it takes us by surprise that taking our shirts off and spending a day in the garden or outside the pub results in our skin burning. I had a debate with someone on holiday adamant that the "SPF" on sun creams indicates how many minutes you can safely spend in the sun. I was totally wrong and had to eat my hat!

The SPF indicates the percentage of Ultra Violet light that the cream will prevent going through to the skin. Whichever you use it should be re-applied every 2 hours to continue its protection. There are 2 types of UV light - UVA wavelength causes the skin to age and UVB causes the skin to burn. Both result in cell damage which can lead to skin cancers which vary from fairly mild to rapidly aggressive and catastrophic. A lot of skin cancers are due to sun exposure from many years ago but the risk is accumulative so whatever can be done to reduce exposure is a bonus. I was called out the other day for "looking well" and realised the only sun I'd had was out running which reminded me how important it is to protect our skin even if you're only out for 20 minutes.

The 21st May was our last Covid vaccination clinic for the over 75s and the nurses have been around the care homes. We won't get any more vaccine now so if you missed out on the booster please book via the National Booking Service. We'll wait and see what the guidance is for any more boosters which are likely to be given alongside the flu jabs in the Autumn. I'm sure that we will be involved if and when we get instructions.

The Surgery looks much brighter and colourful with canvases up on the walls. We had some super offerings from several people and chose some beautiful photographs of local scenes captured by Emma Carlton - we are very grateful to her for allowing us to use them. We are getting a few brighter chairs to go in the waiting rooms although I've discovered that healthcare-rated-chair brochures struggle to raise any inspiration from me.

Time now for me to put on a good layer of factor 50 sun cream and a hat, then go and mull over the question of why my onion sets aren't growing at all... The packet made it sound so simple... Wishing everyone a great Jubilee weekend from the Surgery - Jack Hickey, GP.



## Be the first to find out what's happening in your area

My Community Voice is a two-way engagement tool brought to you by Kent Police.

Whether you live, work or socialise in Kent or Medway, My Community Voice provides real-time messages directly from our police officers, staff and volunteers, about matters that may affect you or your community.

From crime prevention advice, to the latest updates on scams, appeals or events – this is your opportunity to discuss the issues that affect you directly, and we want to hear them. You control what information you receive and how you receive it, by email, text or voice message.

You can also share messages or reply to us and others if you have information. The survey tool function gives us a greater insight into your specific concerns.



Sign up today or to find out more visit [www.mycommunityvoicekent.co.uk](http://www.mycommunityvoicekent.co.uk)

### Report a crime

Report a non-urgent crime online [www.kent.police.uk/report](http://www.kent.police.uk/report)

Talk to us on LiveChat – available 24/7 [www.kent.police.uk/contact](http://www.kent.police.uk/contact)

In an emergency, if crime is in progress or life is in danger call **999**

If you have a hearing or speech impairment, use our textphone service 18000. Or text us on 999 if you've pre-registered with the emergency SMS service.

[www.kent.police.uk](http://www.kent.police.uk)



### Surgery Opening Hours

Monday to Friday 9am to 5pm



### Where to find us...

Hamstreet Dental Clinic  
Warehorne Road  
Hamstreet  
Kent TN26 2JJ

[Find us on facebook](#)



Tel: 01233 733848

Email: [hamstreetdentalclinic@gmail.com](mailto:hamstreetdentalclinic@gmail.com)





## What's been going on at Woodchurch CEP School?

Here are the projects that our children have been engaging with this term:

EYFS	Y1	Y2	Y3	Y4	Y5	Y6
Dangerous Dinosaurs	Dinosaur Planet	The Scented Garden	Scrumdiddly umptious!	Road Trip USA	Allotment	Tomorrow's World

### Well done!

During the month of May, our Year 2 and Year 6 children have been working ever so hard as they put all of their energy and effort into making sure that they really let their light shine when completing their SATs papers. They definitely took the opportunity to show off what they can do which, considering the disruption to schooling over the last two years, was no mean feat. We are very proud of every single one of them!

The children and staff spent a day wearing pyjamas, reading and sharing stories to raise money for BookTrust. This charity focuses on providing every child get a bedtime story. We raised £98.09!



### Bouncing Around...



The children took part in 'Bounce Beyond' trampoline workshops, learning how bouncing can improve fitness, boost self-esteem, confidence and enhance cognitive development, coordination and balance. It was lots of fun, especially when the lights went off and the disco began!



## Woodchurch CE Primary School



**Looking for a school space? Contact the school office.**

COMPASSION HOPE FORGIVENESS THANKFULNESS LOVE

01233 860232

[www.woodchurch.kent.sch.uk](http://www.woodchurch.kent.sch.uk)

[office@woodchurch.kent.sch.uk](mailto:office@woodchurch.kent.sch.uk)

### Guides

## WOODCHURCH BROWNIES AND GUIDES



Are you aged 7 TO 9 and would like to know more about brownies or 9 plus and would like to know what guides is all about then why not come and join us for an open evening ON JUNE 29<sup>th</sup> from 6pm till 8pm. We are planning on either a cook out or cook in depending on the weather. We are a very friendly group and would love you to join us.

So come along to Woodchurch Scout and Guide Community Hall on Lower Road or call 01233 861236 for more information about the open evening.

From September our new times will be brownies from 6 pm till 7.15 and guides 6.45 till 8pm. Tracy ,Vicki and Fran look forward to seeing you.



## Woodchurch Cottage Flowers

We are an artisan florist and flower grower. We grow and sell the most amazing seasonal English flowers. All grown here at our smallholding in Woodchurch in Kent. We are a small flower farm working with nature and the seasons.



Call or text 07969 449235

[www.woodchurchcottageflowers.co.uk](http://www.woodchurchcottageflowers.co.uk)



RDA

[www.rdawoodchurch.co.uk](http://www.rdawoodchurch.co.uk)

## HELP NEEDED

## Woodchurch Driving Group RDA is looking for more Volunteers

### COULD THIS BE YOU?

The group is made up of disadvantaged and companion drivers and volunteers, who come from a wide range of backgrounds and bring many skills and interests to the group. Our common bond is the ponies that give so much to everyone. They have the ability to instill trust and confidence and a sense of personal achievement where other channels have failed. We meet weekly on Mondays and Wednesdays from spring to autumn and drive in beautiful fields, woods and an outdoor arena. As a registered self-funding charity, we regularly fundraise for the ponies' upkeep and essential equipment, this is achieved with events and social gatherings throughout the year.

If you feel you could help by volunteering with the group you can find us at our website [www.rdawoodchurch.co.uk](http://www.rdawoodchurch.co.uk) or if you prefer please call (Group Secretary) on 01233 770558. Thank you. Previous experience is not required as training will be given.



**A member of the Riding for the Disabled Association Incorporating Carriage Driving**

Dear Friends,

June sees us as a nation celebrate something that has never happened in this country and has barely happened in the world before. This of course is the Platinum Jubilee of the Queen. The Queen has served our country for 70 years, dedicating herself to her role as monarch. What an amazing achievement!

This is what the Queen said when she spoke to the nation on her 21st Birthday on the 21st of April 1947: "I declare before you all that my whole life whether it be long or short shall be devoted to your service and the service of our great imperial family to which we all belong.

But I shall not have strength to carry out this resolution alone unless you join in it with me, as I now invite you to do: I know that your support will be unfailingly given. God help me to make good my vow, and God bless all of you who are willing to share in it."

Obviously, the world has changed since 1947 but there is still much to learn from what our Queen said on that occasion. Serving others is not only a privilege but it is also something that is essential to our daily life. By helping others whether they are strangers, friends, neighbours or refugees, not only are we living the way that Jesus calls us to do, but we are also working to bring people together in a way that helps everyone. When you help a stranger they are no longer a stranger but they become a friend.

Our Jubilee celebrations are a wonderful example of village communities coming together, and supporting one another to prepare for this important celebration. I hope you all have a fantastic bank holiday weekend whatever you are doing - we have so much planned in Woodchurch and I look forward to seeing many of you at the events taking place.

Thanks very much to those who support our fundraising efforts for the church. We hope you can support us by visiting the church during the Jubilee celebrations to see our display of christenings and weddings in 1952 and 1953, and other church news of that time. We will also have a craft stall on the green. Donations will be much appreciated.

We also have our Snowdown Colliery Welfare Brass Band concert coming up on 11th June at 7pm. As well as raising funds for the church, we are also supporting DEBRA fundraising for EB research - Epidermolysis Bullosa (EB) is the name for a group of painful genetic skin conditions that cause the skin to become very fragile and tear or blister at the slightest touch. We have a village family who are affected by this condition. Please support this event if you can.

God Bless, Reverend Sue - [Revsuerose@outlook.com](mailto:Revsuerose@outlook.com), 01233 820266



April 2022

## All Saints Church Woodchurch Mission Plan 2022 and Beyond

### What is a Mission Plan?



Plan for 2022 and 2023



The Parochial Church Council PCC have been thinking about how the church relates to those who live in Woodchurch (our parishioners), and how we might better serve the needs of our village community. As well as being a focus for faith in the centre of the village, we would like to be a place of hospitality, open and available to all. The Mission Plan sets out our vision for the next couple of years and beyond. Anything we plan needs to involve our community. We have no external funding, so if we wish to continue to have this beautiful building in our midst, supporting families in joyful and sad times, we all need to work together.

Please let us know what you think about our plans!

To be a place of welcome and hospitality in our village community by:

Employing a youth worker to start an after school café for young people aged 10-14 after school one afternoon each week starting 19<sup>th</sup> April

Holding weekly coffee mornings in church at 10am each Tuesday – all welcome

Setting up a "prayer station" in the porch where adults and children can leave prayers for anyone you would like us to pray for

Providing a welcome pack for those who move into the village

Providing a monthly community coffee and chat morning on Saturdays – perhaps with craft sales



Developing our links with the school, with children regularly coming to church and the Rector visiting classes; in June we are planning confirmation classes

Upgrading our heating system (to be completed in May) to enable us to offer a warmer welcome and to be more environmentally friendly

Organising a series of concert events when we can welcome local people into church

Messy church – an informal service for families and the young at heart

Pet services and outdoor services

Bereavement support

Community talks and events (such as flower arranging demonstrations and courses)

Craft Group

Village weddings for those with who are less well off

Christmas Tree Festival December 2022

Installing wi-fi for community use

### Our Building



### Our Churchyard

We have some ambitious plans to further improve our church and we would love to find a volunteer building manager who is interested in historic buildings. We want to tell the story of the building to all who visit, and we would like to make the space more flexible for community use. We are thankful for those who already help to care for our building.

Our churchyard has been transformed by a wonderful team of volunteers; we will continue to work with the community to balance the needs to those who visit family memorials, and to protect and nurture the wild flowers and wildlife.

We would like to hear your views! Contact Reverend Sue Rose (Rector) on 01233 820266 or [revsuerose@outlook.com](mailto:revsuerose@outlook.com)



## What's in a name?

Names are so important, aren't they? They define us and sometimes are even linked to our heritage. You may be named after your parents or a place. Whatever your name, it becomes very much part of you - even if you change or shorten it. It is, therefore, no surprise that authors agonise endlessly over naming their characters. For example did you know that Scarlett O'Hara in 'Gone with the Wind' was originally called Pansy by the author? Would that have suited her feisty personality? I think Scarlett is so much better, don't you?



Place names are important too - especially for our heritage. There is debate as to where the name 'Woodchurch' came from. Was it originally a church built in the woods or a wooden church? We will never know but it is clear from the name given to the village that the church is very much the focus. Unfortunately that very church is now threatened, due to mounting costs and the need for restoration. In truth fundraising for the church has had to take the drastic step to become action to save the church.

If keeping the church in the village is important to you, please help us. We have a great event on 11th June, starting at 7.00 pm. The Snowdown Colliery Welfare Band is giving a concert in the church that is set to raise the roof (although we hope not literally!). Please buy a ticket (available from The Hub) and attend. There will be a licensed bar and a raffle too. As part of the evening we are also supporting our chosen local charity Debra - so by coming along you will not only have a great night out but you will be helping a local charity, and raise funds for the fabric of the church.

Names are so important, and that is why we are trying to take action. I'm sure you don't want to be living in 'Wood-no-Church' in the future, or maybe we will have to change the signs to 'Welcome to Wood' - because the church is not there any more.

If you have the technology and feel able to help us please scan or click the links to the right to help support our church - even the smallest donation is much appreciated.

Reverend Sue

[Revsuerose@outlook.com](mailto:Revsuerose@outlook.com), 01233 820266

### A single donation



THANK YOU FOR  
YOUR KIND  
DONATION

### A regular donation



## Police Notice

It has come to the attention of Kent Police that there are a number of parking issues within the local area.

### PARKING CLOSE TO A JUNCTION MAY:

- Restrict visibility for other motorists
- Obstruct access for other drivers
- Cause a road safety hazard

### THOSE PARKING ON THE PAVEMENT MAY:

- Force pedestrians into the road
- Damage the pavement

Kent Police are working with the Local Authority and would like to remind drivers of the following:

It is an offence to cause a vehicle to remain on a road in such a position as to involve a danger of injury to other persons using the road, contrary to Section 22 of the Road Traffic Act 1988.

Penalty- 3 penalty points, £100 fine and/ or disqualification.

It is an offence to cause a motor vehicle to stand on a road so as to cause an unnecessary obstruction.

Penalty - £30 fixed penalty fine and potential vehicle seizure.

Kent Police and Ashford Borough Council would ask that you park considerately and consider the above.



**Protecting and serving the people of Kent**

# THE SOUND OF BRASS



## ALL SAINTS CHURCH WOODCHURCH

Enjoy an evening of Brass Band Music from classics to a modern repertoire

**Saturday, 11th June 2022**

Doors open 6.30pm

**Concert starts at 7.00pm**

Supporting All Saints Church

and



**LICENSED BAR**

All proceeds from  
**RAFFLE** supporting **DEBRA**

Tickets **£10** available from

Woodchurch HUB 01233 861381 [enquiries@woodchurchhub.uk](mailto:enquiries@woodchurchhub.uk)



And suddenly "It's May, the merry month of May" and the "Resolutions Meeting" when each WI is obliged to debate and vote for the selected resolution to go forward to the Annual Meeting in Liverpool in June. All WIs get one vote for the resolution - for or against and this year each WI can also choose to give discretion to the delegate to decide how to vote after hearing the presentations and debate at the Annual Meeting. Therefore, we always need to give this part of the meeting our full attention. This year's resolution is important because it concerns women and girls with autistic spectrum disorder (ASD) and attention deficit hyperactivity disorder (ADHD) and the fact that, unlike boys and men in similar circumstances, a female tends to have the ability to mask or camouflage the difficulties she is experiencing. This leads to them going under identified, under-diagnosed or misdiagnosed and, therefore, under supported. After discussion, it was unanimously agreed to vote in favour of the resolution, with four members electing to give the necessary authority to our delegate to decide how to vote following the debate at the actual Annual Meeting.

Having diligently dealt with the serious stuff, we needed some light relief and Lynn, our President, was delighted to welcome Ann Simpson, a Wittersham WI member, who had come to give a brief talk on the health benefits of Tai Chi and Qi Gong (pronounced chi kung). Ann, who has been practising for 20 years, explained that Tai Chi is extremely relaxing, helps to moderate stress levels and blood pressure and is good for our balance and concentration, particularly as we get older. She maintained that the best way for us to really appreciate these beneficial qualities was for us to actually stand up and "have a go," and having already observed that Ann was sporting a T shirt bearing the logo "Never underestimate an Old Woman who knows Tai Chi," we felt disinclined to argue with her. Thus, it was that we had a real "Calendar Girls" moment, with the majority of us enthusiastically joining in and attempting to replicate Ann's every move, whilst regulating our breathing accordingly. No one was left out, as Ann explained that the arm movements and the regulated breathing could be followed from a seated position. All too soon our impromptu first lesson was over. We all agreed that it had, indeed, been very relaxing and we



certainly enjoyed our tea/coffee all the more, feeling that we had earned our refreshments! Thank you, Ann, for succeeding in shifting us out of our comfort zone in such a fun way!

Our next meeting is scheduled for Tuesday, 14th June at 7.15 pm in the Memorial Hall when Sue Howell will give a talk entitled "Laura Ashley - An Inspiring Woman". The competition will, of course, be Laura Ashley related, as it requires an actual Laura Ashley item or a photo. Do join us if you can and, as always, any interested visitors can be assured of a warm WI welcome!



**carm**  
supporting older people in rural areas

**DO YOU  
LIKE  
HELPING  
PEOPLE?**

**We're looking for volunteers to help get people online.**

**Many people don't have the confidence or the knowledge to use a computer.**

**That means they can't do their shopping online, book NHS appointments or connect with family and friends online.**

**WITH YOUR HELP, YOU COULD  
CHANGE THEIR LIFE!**

**Call us if you would like to get involved.**

**We'll provide all the training and support that you need and we can be flexible around your other commitments.**

**Sessions will be held in Tenterden.**

**Caring Altogether on Romney Marsh**

**WOODCHURCH  
HUB**  
COMMUNITY INFORMATION CENTRE

**Woodchurch HUB now has over  
1,200 Facebook followers**



# Simple Kent Funerals

Relaxed, flexible, imaginative, economical, caring

Applefield Cottage, Redbrook Street, Woodchurch TN26 3QS

Call Toby on 07806 613297 • [www.simplekentfunerals.co.uk](http://www.simplekentfunerals.co.uk)

We work in an eco-friendly and environmentally-sustainable way and are certified as a net carbon neutral business

## The Six Bells Inn

**They've done it! Well Done, Congratulations, Brilliant.**

**Woodchurch are the Football League Champions and their name is on the very large, impressive trophy for the first time.**



We have been privileged to be their "drinking home" during the season and for many of the team their local for the rest of the year.

The celebrations at their presentation afternoon here last Saturday, will go down in the history books with lots of wonderful memories for the future which no doubt will be recalled with "Do you remember when ....."

The Cup itself has proven to be the "biggest shot glass" ever and the sense of pride that radiated throughout the pub on Saturday was amazing and extremely emotional.

Meanwhile, we will come back down to earth with what has happened and is happening at The Bells.

The extension is very, very nearly finished and the garden is too and a big thank you to all of you who have shown a great interest in its progression over the past few months and of course to the team of builders who have become official member of "The Bells" crew.

The long-awaited arrival of our extremely talented Chef is nearly here and we are bristling with excitement.

The Defibrillator, which has been generously funded by the residents from "The Six Bells Residential Park" and Woodchurch Parish Council, has been sited next to our front door and should be fully operational very soon.

It's all soooooo thrilling, the Carnival is almost upon us and we are, along with the rest of Woodchurch (Woodchurch of course being the centre of the Universe!) and the entire UK, are all keeping everything crossed for exceptional weather for the Queen's Jubilee weekend.

June 2022 will be one that will one for the history books (I know I keep saying that but how else can I express the importance of this year to us all) never in our lifetime will we witness such an amazing, historical event and Woodchurch will be marking it with 4 days of such unprecedented celebrations.

We will be throwing our doors open wide (including the fantastic bi-fold door on our extension) to all of Woodchurch and its visitors for this fantastic occasion.

We send our warmest wishes and our admiration to her Majesty Queen Elizabeth II and to all of Woodchurch and beyond at the start of this fantastic month of celebrations.

Good Luck to all involved in the celebrations and a big thank you to the people who have made this all possible.

With lots of love Emily and all at The Bells xxx

## WoodchurchYardTogether ("WYT")

Our next volunteer gardening weekend in the Churchyard is:

11<sup>th</sup> & 12<sup>th</sup>  
June



Keeping in Touch:

Email:

[Philippa@woodchurch.co.uk](mailto:Philippa@woodchurch.co.uk)

Or follow us on Facebook



Search: 'WoodchurchYard Together'

## Woodchurch Memorial Hall Trust

### COMMITTEE MEMBERS NEEDED



It is exciting times for the Woodchurch Memorial Hall as we brush off our 60 year old cobwebs and governance shackles and stride confidently into the the 21<sup>st</sup> Century. We have now updated ourselves to become a new incorporated charity (CIO), which has given us much greater freedom in the way we can operate.

Re-born as the Woodchurch Memorial Hall Trust we are now looking to expand our committee with keen individuals who would like to help support and guide the hall complex through the next decade and beyond.

If this could include you and you would like more information please contact us at [enquiries@woodchurchhalls.uk](mailto:enquiries@woodchurchhalls.uk)



June is peak season for garden visiting, and we look forward to welcoming you to Boldshaves. The Tea House and Garden are open on Fridays, Saturdays, Sundays and public holidays (including all holidays over the Platinum Jubilee weekend) from 2-6pm. Plants for sale. Entrance £5, and free for children under 14.

We look forward to seeing you.

Boldshaves Garden, Frog's Hole Lane, Woodchurch, TN263RA  
[www.boldshaves.co.uk](http://www.boldshaves.co.uk)



# Everything Outside

Bringing New Life  
To Your Garden

For A Quick Quote From A Company You Can Trust Call

☎ 01580 766 232 ☎ 07795 465 861

## Welcome To Everything Outside

We cover a wide range of services to meet the requirements of our ever-growing client list, if you are looking for a company you can trust to provide a high standard of quality work covering

- ✓ Gardening
- ✓ Garden Design
- ✓ Fencing
- ✓ Clearance
- ✓ Landscaping
- ✓ Hedge Cutting
- ✓ Tree Surgery
- ✓ Digger Work

and much more. Then call our experienced team today on 07795 465 861. To view our full range of services, click on the link below.

Our head office is based in Tenterden, Kent and means we are in the perfect location to proudly service Kent and East Sussex. All our services are tailored to each job we carry out and our team are experience in all aspects of fencing and landscaping services making us your number one choice for all work you require.

Great Work

Great Reputation

Great Price



### Design, planning & build services

Now offering full 3d design development for your extension, new build or conversion project. Please call us for an introduction to our design services at our Woodchurch office.

01233 861177 [vernacularhomes.com](http://vernacularhomes.com)



## fab feet Professional Foot Healthcare

[www.fabfeethealthcare.co.uk](http://www.fabfeethealthcare.co.uk)

Delivering high quality Podiatric care in the  
comfort of your own home

Providing a reliable and friendly service of professional  
treatments for all of your foot ailments:

Call Michelle on:

**Tel: 01233 731207**

Registered & Insured



O  
U  
R  
  
S  
P  
O  
N  
S  
O  
R  
S



**Nicholls Restores**

Antique furniture restorer & Wood finishing specialist



01233 860130 - [nichollsrestores@btinternet.com](mailto:nichollsrestores@btinternet.com)

### Tenterden Removals

The Professional Removers in the Weald



Secure Storage at a Competitive Price

To help keep the Newsletter free for the village please become one of our sponsors or give a donation if you can.

[www.woodchurchhub.uk](http://www.woodchurchhub.uk)

or Contact The HUB for more information



Try our professional  
Home News  
Delivery service

New customer introductory  
offers available

Have your paper delivered before you go to work and  
read it with your breakfast!

- ✓ Early delivery - before 6.30am (7.30am at weekends)
- ✓ Excellent communication - phone or email ALWAYS responded to
- ✓ Different billing options available
- ✓ All national and local newspapers available to order
- ✓ All magazines available to order
- ✓ Well established reliable company with over 4,400 customers

Place your order today by telephone on  
**01580 763183**

or email us at [mail@jackiesnews.co.uk](mailto:mail@jackiesnews.co.uk)  
or go to [www.jackiesnews.co.uk/place-your-order](http://www.jackiesnews.co.uk/place-your-order)





07944 940 182

EST. Over 35yrs

**Extensions  
General Building  
Property Maintenance  
Brickwork/Stonework Specialist  
Landscaping**

Free Estimates



Chris@cgmbuildersltd.co.uk

[www.cgmbuildersltd.co.uk](http://www.cgmbuildersltd.co.uk)

**KENT**   
**HOLIDAY COTTAGES**

+44 (0) 1233 860 293

info@kentholidaycottages.co.uk



**WOODCHURCH**

SHOP BAR WINE TASTING TOURS

Thursdays to Sundays 11am - 5pm

<http://woodchurchwine.co.uk> tel:01233 860276

You could advertise your company here  
from as little as £10 per month



*Remedial massage therapy.*

**Your Local Woodchurch Massage Therapist**

- Remedial Massage
- Sports Massage
- Holistic Massage

- Ultrasound Therapy
- Electrotherapy



- Injury Treatments & Rehabilitation
- Rehabilitation Taping/Strapping
- Athletic Taping/Strapping

**Bookings - 07799221043**

[www.musclewhisperer.org.uk](http://www.musclewhisperer.org.uk)

Treatment Room - Little Vale TN26 3QW

musclewhisperer@outlook.com



**SO MUCH MORE  
IN YOUR LOCAL  
COUNTRY STORE**



Of course we sell agricultural parts and machinery.

We also sell outdoor and PPE clothing, alongside hand tools, adhesives, hardware, barn paint and much more...

We're online too: [ernestdoeshop.com](http://ernestdoeshop.com)

Hendon Barn, Woodchurch  
Ashford, Kent TN26 3QP  
Tel: 01233 224860

 **ernestDOEpower**  
where you buy with confidence





## Woodchurch Local History Society

Our society meets in the Memorial Hall on the first Monday of the month at 7:30pm. Our next meeting is on Monday June 6th and our speaker will be Ken

Brooks talking about 'The Rock-a-Nore Story'. He was originally scheduled to give a presentation called 'Ecclesbourne Glen' but in a last minute change the talk will now be about the Rock-a-Nore area of old Hastings. This area includes the fishing beach, fishing huts, Fisherman's Museum, fish 'n' chip restaurants and a street or two of old houses.

Ken is a leading expert on the history of old Hastings and during the evening he will tell us about Rock-a-Nore's history and of the unusual and colourful characters that lived there - characters such as Biddy the Tubman and the Great Omani.

Ken is also a keen geologist and he will include in his talk some dramatic slides of some dinosaur footprints he found in the cliffs overlooking Hastings.



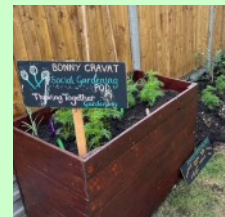
After our June meeting the society will 'break-up' until September. However, during the summer recess our society will host a few society visits and hopefully, an afternoon cream tea event. Our September meeting in the Memorial Hall will be held on Monday 5th September, 7:30pm and our guest speaker will be Imogen Corrigan presenting the 'Royal Burial at Sutton Hoo'.

New members of our society are very welcome indeed and pay £10 annually (only £5 after September) and visitors pay £3 at the door.

Thanks, Geoff 01233 860393

## Bonny Cravat

What a month it has been here at the Bonny! Our Thriving Together, social community gardening project in partnership with the wonderful Woodchurch In Bloom team is now fully up and running. Thanks to all who came along and worked so hard to get everything set up and looking so beautiful.



We had a brilliant quiz night, with yet another cash prize roll over!! Can you believe it?! Teams will now be playing to win over £100! Don't miss out on our next quiz, Tuesday 14th June at 7pm.

Our Classic Car Meet up was extremely popular and we absolutely loved seeing all of the magnificent cars glistening in the sunshine! Our next Classic Car Meet will take place on Sunday 5th June from 12:00pm

Our team are really looking forward to the Jubilee celebrations. We have the wonderful Gavin Sage here with us from 7pm on Thursday 2nd June to get your weekend celebrations started with some jazz and americano blues. We can't wait to see the carnival back in Woodchurch and hope to see you all for some drinking, eating and celebrating!



Don't forget to pop in and try your hand at some gardening, or bring someone you know who might like to give it a go!

Bookings and enquiries on 01233 860345  
Leigha - [www.facebook.com/bonnycravat/](https://www.facebook.com/bonnycravat/)

## Woodchurch Bumblebee Garden Party

**Saturday 16th July 2022, 4pm onwards**

Hosted by Woodchurch in Bloom and the Bumblebee Conservation Trust

Join us at 4pm for a 30-minute talk by Dr Nikki Gammans in the Memorial Hall

Guided walks around the buzzing Woodchurch meadow and flower-filled churchyard. Bee nets and pots supplied for a closer look

Fun for all the family with activity sheets, Trust merchandise stall, raffle, make your own bee-friendly seed balls, and refreshments

For more information, email: [nikki.gammans@bumblebeeconservation.org](mailto:nikki.gammans@bumblebeeconservation.org)



In celebration of Her Majesty The Queen's Platinum Jubilee this month, we thought we would share a little history

about the Woodchurch Gardening Society from the 1950's: In the 1950's, the Gardening Society ran two shows a year, one usually in the last week of June, called the Rose and Sweet Pea Show. The other was held in September, the Vegetable and Soft Fruit Show.

It was in the mid-fifties too, that many beautiful silver cups were first gifted to the Gardening Society to be presented to the winner for the best in class. Further cups and bowls were added in the 1970s. These are now on display in a cabinet looking glorious all together.

Jumping forward in time, in 2020, Woodchurch Gardening Society merged with Woodchurch in Bloom, bringing together the 'best of both'.

Thank you to Linda Crew for the above information - you can read more about the history of the Gardening Society in 'Scuppets & Scutchell' Issue 3, which will be on sale at Woodchurch Jubilee carnival on the 4th June from the Woodchurch Ancestry stall.

## Photocopying and Laminating at The HUB

**We can scan, print, copy and laminate A3 pages and can print booklets.**

Photocopies (per side)	A4 b/w - 10p, A4 colour - 15p
	A3 b/w - 15p, A4 colour - 20p
Laminating (per sheet)	A4 - 15p, A3 - 25p

### Felicity raises over £1,000 for cancer charity

8 year old Felicity has raised an amazing £1,000 to help children who are fighting cancer.

It all began when Felicity saw a programme on the television about the Little Princess Trust, which is a charity that makes wigs for children who have lost their hair through cancer treatment. As she had a head of beautiful hair herself, she decided she wanted to have it cut for her 8th birthday and the hair donated to help those children.

She was sponsored by friends and family, village residents and several Woodchurch societies. She donated 14 inches of her hair and raised just over £1,000 in sponsorship.



### Six Bells Residents Association AGM

Six Bells Park residents will be holding their AGM on Saturday 18th June at the Jean Mealham Centre.

### Meals Delivery Service now available in Woodchurch

The "meals-on-wheels" style Meal Delivery service has now been running successfully in Woodchurch since the beginning of February. This is a daily delivery of a 2-course hot meal from 12:15 pm., Monday to Friday (not currently at weekends). You do not need to subscribe to every day.

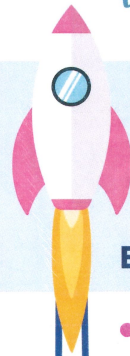
This service is being organised in Woodchurch by The HUB, in conjunction with Tenterden Social Hub. Your meal will be delivered piping hot by Woodchurch's own volunteers. There are still spaces for customers and also a need for reserve drivers.

For more information please contact The HUB at [enquiries@woodchurchhub.uk](mailto:enquiries@woodchurchhub.uk) or phone **01233 861381** or contact Tenterden Social Hub on 01580 762882.

## Help Support Woodchurch Museum and have a chance to win up to £25,000

Ashford  
COMMUNITY  
Lottery

Supporting



# WE'VE LAUNCHED OUR LOTTERY PAGE

Buy your tickets from our page - we get 50%

- We now have a Ashford Community Lottery page!
- Support local causes and win prizes of up to £25,000!
- 50% of all tickets sold from our page go to us!
- PLUS 10% goes to other local good causes!
- Tickets only cost £1 per week!
- Support us and win prizes - WIN WIN!

To start supporting, visit:  
[www.AshfordCommunityLottery.co.uk](http://www.AshfordCommunityLottery.co.uk)  
and search for:  
**Life Museum**



Supporters must be 16 years of age or older



## WE ARE HIRING!

### 3 x COOK POSITIONS CONTRACT & FLEXI

WE WILL EVEN GIVE YOU ALL THE TRAINING!

### LIFE SKILLS TUTOR - FARM

P/T 35 HOURS A WEEK OFFERING TRAINING  
IN AGRICULTURAL ANIMALS

CHECK OUT  
[C-O-T.ORG.UK/RECRUITMENT](http://C-O-T.ORG.UK/RECRUITMENT)

## WE HAVE MANY OTHER CAREERS ON OFFER IN CARE TOO...

The Rare Breeds Centre is part of  
Canterbury Oast Trust; a registered charity  
working with adults with learning disabilities.





### Village Lost Property at The HUB

If you find any lost property around the village please bring it to The HUB. We will hold it there waiting to be claimed for four months. For any valuable/important items that we have handed in, we will place notices online, in the Newsletter and on social media. If you have lost something around the Village please let The HUB know as it may have been handed in. Do you recognise any of the items below that have recently been handed in?



### Please help support the Newsletter



With the Newsletter size increasing to 16 pages each month we now need more help to cover the printing costs. If you are a local business and would like to advertise or would just like to give a donation, please visit to The HUB area on the Web site for more information - or contact The HUB on:

**01233 861381 or [enquiries@woodchurchhub.uk](mailto:enquiries@woodchurchhub.uk)**

### Items For Future Newsletters

The purpose of the Woodchurch Community Newsletter is to inform the residents of Woodchurch what is happening around our village. We are keen to share as much information as we can. If there is something that you would like to have included in future editions then please send them to:

[enquiries@woodchurchhub.uk](mailto:enquiries@woodchurchhub.uk)

- |                      |                        |
|----------------------|------------------------|
| * forthcoming events | * club/society reports |
| * announcements      | * interesting facts    |
| * memorials          | * photos               |
| * adverts            | * etc. etc. etc.       |



# WEALDEN LITERARY FESTIVAL

**25<sup>th</sup> & 26<sup>th</sup> June**

A host of wonderful new events have been added to the programme for this summer's Wealden Festival, taking place over the weekend of 25 & 26 June. Head over to our website to browse the full programme, which you can also explore at <https://wealdenliteraryfestival.co.uk/wealden-2022>

In a unique event, Jackie Morris, the acclaimed author, artist and co-creator with Robert Macfarlane of *The Lost Words* and *The Lost Spells*, will be painting live to original soundscapes of the natural world mixed by the renowned wildlife recordist, Chris Watson.

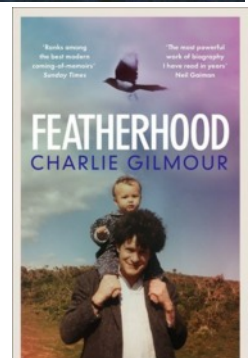
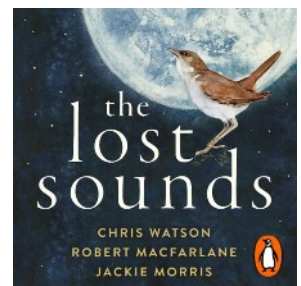
Two extraordinary talents share their enchanting encounters with wild birds. Charlie Gilmour, author of the best-selling memoir, *Featherhood*, speaks with Hannah Bourne-Taylor, author of one of this year's most talked about works of nature writing, *Fledgling*.

Professor Seirian Sumner will also be with us to talk about *Endless Forms*, her awe-inspiring account of the fascinating world of wasps.

We've also been busy adding to our bespoke children's programme, featuring talks from children's authors and illustrators, outdoor events, and arts/crafts activities designed to encourage the next generation to discover more about the world around them.

For general enquiries and booking tickets [hello@wealdenliteraryfestival.co.uk](mailto:hello@wealdenliteraryfestival.co.uk)

To speak to one of the team call **01233 770878**



## News from Woodchurch Village Life Museum (WVLM)

Two volunteers from Woodchurch Village Life Museum took the carnival exhibition into Woodchurch Primary School on Friday 20 May and spent the day talking to each of the classes about collections, Wheels of Time, the museum and the forthcoming carnival.



Many of the pupils were responsive and asked very good questions. It was especially heart-warming to discover one pupil who had already collected 16 Wheels of Time badges by visiting 16 of the participating Kent museums.

Fossils, coins, gems and hot rod cars were some of the things that the pupils collect. It is hoped that a follow-up session can be organised so that the pupils can show off their collections.

Don't forget that the museum is open every weekend and Bank holidays, from 10:00 until 16:00. Why not bring your children along so that they can join the Wheels of Time scheme which is free to join?

### Scout's Newspaper Collection

Woodchurch Scout group collect paper in the village on the second Sunday of every month. Please have your paper outside your property, visible from the road, by 9am. The proceeds from this help to run the mini bus.



## Woodchurch Meeting Point

Woodchurch Memorial Hall

**Special Platinum Jubilee**

**Sandwiches, Strawberries & Cream**

**Monday 6 June 12pm – 2pm**

CARM Meeting Points are your local place to drop in, enjoy the occasional speaker, outings, games, meet people, and make friends. Do come along and enjoy a cup of tea and a piece of cake with us. Everyone is welcome.



£1 voluntary contribution.  
If you would like to know more,  
call **CARM** on **01233 758122**

We are a local Charity working to  
reduce social isolation and loneliness.  
Registered Charity no. 1184552  
[www.carmromneymarsh.org.uk](http://www.carmromneymarsh.org.uk)



## MUSEUM 150+ Lottery Draw



Support your local museum- you could win a  
£50/£30/£20 prize every month.  
For more information please ask at the Museum stall at the  
Carnival or contact Joyce via The HUB -  
[enquiries@woodchurchhub.uk](mailto:enquiries@woodchurchhub.uk) or 01233 861381

### May 2022 Draw Results

1st prize	£50	Margaret Sawyer	1371
2nd prize	£30	Peter Massey	93
3rd prize	£20	Carol Vant	50

We love the magical setting of  
Woodchurch so much we want to  
extend a discount of 10% off your  
meal at our Patio Takeaway (Grass  
fed burgers, veggie and vegan) when  
you visit the Rare Breeds Centre and  
live in a Woodchurch postcode.



Book online in advance to attend.  
[www.rarebreeds.org.uk](http://www.rarebreeds.org.uk)

You can use the discount as many times as you like but proof  
of postcode required when placing order.

**Offer open until 1 September 2022.**



The new issue of Scuppets & Scutchell, the local history journal for Woodchurch researched and written by members of the Woodchurch Ancestry Group, will be available from the group's stall at Woodchurch Carnival. As usual, this issue is packed with fascinating articles about the village including the beginnings of the village as an Anglo-Saxon settlement; the brutal flogging of Ann Brisley near the Bonny Cravat for having an illegitimate

child; the chance discovery of a 1922 time capsule at Townland Farm; how the poor of the village switched from local wood for cooking and heating to coal from collieries in the northeast of England; a history of the 135-year-old Gardening Society; the story of the influential le Clerke family who lived in the village for over five hundred years; the red and blue badges paupers claiming financial assistance from the parish in the 1600s were forced to wear as marks of shame; and how Operation Sea Lion, Hitler's plan to invade southern England in 1940, would have put Woodchurch on the front line. Discover more about where you live. Come and find us on 4 June!



# WOODCHURCH CARNIVAL

Celebrating the  
**Queen's Platinum Jubilee**  
**4th June 2022** 12 noon 'til late

**Carnival Parade**  
Fabulous Rides and Games including  
**Helter Skelter**  
**Carousel**  
**Dog Show**  
and much, much more  
**Gift & Produce Stalls**  
**A host of Refreshments**  
**Vintage Tea & Beer Tent**  
**5 live Bands**  
**Spectacular Laser Light Show**

Supported by  
  
Supported by

**Woody WOODCHURCH CARNIVAL**

[www.woodchurchcarnival.uk](http://www.woodchurchcarnival.uk)  
[enquiries@woodchurchcarnival.uk](mailto:enquiries@woodchurchcarnival.uk)

## WOODCHURCH CARNIVAL - 4<sup>th</sup> June

### One last final call for helpers.

If you haven't already volunteered your services and you would like to lend a hand - please come along on either of the setup days (2nd and 3rd) or on the day. Just speak to anyone wearing a Woodchurch Carnival T-Shirt and they will direct you to a Carnival Team Leader.

Anyone who has volunteered for the actual day please try to be available from no later than 11am so Team Leaders can organise the various tasks. Thank you.

### Pick up a Carnival Programme

Lucky Souvenir Programmes are available now from the Hub and will also be available on the day from The Token Stall, Bar and Hub. Priced at £1. Prize to be announced on the day.

### What to expect on the big day.

The day will start at 12 noon with the Parade opened by a special guest. If you are not taking part in the Parade, please line the route and cheer on the Floats. More special guests will join us throughout the day.

Activities on The Green will commence at 1pm and these include: Arena displays by local organisations demonstrating, Tai Chi, Line Dancing, Princess of Wales's Royal Regiment Band and more. Some of the displays will be interactive and we hope you will join in. Who knows you might find something you may want to be involved with in the future?

We have five great bands playing from 1pm to 7.45pm. We hope you will support these bands whilst they entertain you, get up and boogie, sing along with them and let them know they are really appreciated.

Not just for kids - our fairground attractions offer amusement for all the family. They will have you laughing, and enjoying this marvellous occasion. The rides and fun stalls bring a touch of times past.

With over 35 stalls that include great products to buy, there is also a chance to find out more on local and national organisations from the information stands.

Refreshments to keep the energy up are on sale, with great food from a BBQ by our local Scout group. Other vendors will be selling a range of refreshments including vegetarian options. We obviously have a bar and it is still the cheapest liquor in town (please drink responsibly). Finally, don't forget to drop in for tea and cake at the Vintage Tea Tent.

To finish our wonderful day, a futuristic first for our village - as the light of the sun fades, a laser show, set to music will take place on and around our beautiful Church.

In these times when we work so hard and money does not go as far as we wish, we have set prices so that you can enjoy a lot for a little. Tokens for Rides and Games for as little as 50p and £1 can be purchased before the event from the Hub or on the day at the Token Stall, Bar and Hub.

# Swinging GO'S Night

*You're Invited!*

**Saturday 11th June**

**Jean Mealham Pop-in Centre,  
Lower Road,  
Woodchurch,  
TN26 3SQ**

**Doors Open - 7.30PM**

**Band- THE BACKBEATS - 8.00pm - 11.00PM**  
([www.thebackbeats.co.uk](http://www.thebackbeats.co.uk))

**Tickets**  
**£7 for Adults**  
(Accompanied children small donation)

Tickets available from our website : [www.rdawoodchurch.co.uk](http://www.rdawoodchurch.co.uk)  
Or  
Ticket Collection from : **Woodchurch Hub, Front Road, Woodchurch,  
TN26 3PA**  
Or  
**Jean Mealham Pop-In Centre, Lower Road, Woodchurch TN26 3SQ**

RDA  
[www.rdawoodchurch.co.uk](http://www.rdawoodchurch.co.uk)