



# WOODCHURCH COMMUNITY NEWS

*The village community working together*

*April 2022*

Contact us: Telephone 01233 861381 Email [enquiries@woodchurchhub.uk](mailto:enquiries@woodchurchhub.uk) Web [www.woodchurchhub.uk](http://www.woodchurchhub.uk)

**OVER 900 COPIES distributed every month in the Woodchurch area**

## WOODCHURCH Community Calendar



### Weekly events:

#### Saturdays:

**Boot Camp** 9:00am-10:00am on the Village Green

#### Mondays:

**Pilates** 9:00am-10:00am in the Memorial Hall

**Tai Chi and Qigong** 9:45am - 11:45am at the S&G Community Centre, Lower Road

**Knit and Natter** 2:00pm - 3:30pm in the Pop In Lodge

**Beavers** 6:00pm-7:00pm in the S&G Community Centre, Lower Road

**BodyTone** 6:15pm-7:00pm at the Memorial Hall

**BodyFlex** 7:15pm-8:00pm at the Memorial Hall

**Scouts** 7:30pm-9:00pm in the S&G Community Centre, Lower Road

#### Tuesdays:

**Pilates** 9:00am-10:00am, 10:15am-11:15am and 6:00pm-7:00pm in the Memorial Hall

**Little Leaves Forest School** 10:00am - 12:00pm under 5's Play Group based in Woodchurch

**Community Warden** 1:00pm-3:00pm in the HUB

**Puzzle Club** 2:00pm-4:00pm in the Pop In Lodge, Lower Road

**Cubs** 6:00pm-7:00pm in the S&G Community Centre, Lower Road

#### Wednesdays:

**Pilates** 9:00am-10:00am in the Memorial Hall

**Museum Volunteers** 9:30am-12:00pm at the Museum

**Pop-In** 2:00pm-4:00pm Tea and coffee and boot fair marquee at the Jean Mealham Pop-In Centre

**Rainbows** 4:15pm-5:30pm in the S&G Community Centre, Lower Road

**Fish and Chips** 4:30pm-7:30pm in the Village Car Park

#### Thursdays:

**Art Society** 10:00am-1:00pm at the Memorial Hall

**BodyFlex** 6:15pm-7:00pm at the Memorial Hall

**BodyTone** 7:15pm-8:00pm at the Memorial Hall Annexe

**Badminton** 7:00pm-11:00pm at the Memorial Hall

**Explorers** 7:30pm-9:30pm in the S&G Community Centre, Lower Road

Previous editions of the Newsletter can be found on The HUB Web site  
[www.woodchurchhub.UK](http://www.woodchurchhub.UK)



### Other Events:

- Fri 1<sup>st</sup> **Roadworks - Lower Road** until 5<sup>th</sup> April
- Sat 2<sup>nd</sup> **Beachwood Pizza Van** 5:30pm in the car park
- Sun 3<sup>rd</sup> **Morning Worship** 11:00am at All Saints Church
- Classic Car meet** 12:00pm at the Bonny Cravat
- Mon 4<sup>th</sup> **CARM** 10:30am in the Memorial Hall
- WLHS "Tenterden Regency Theatre"** 7:30pm in the Memorial Hall
- Sun 10<sup>th</sup> **Holy Communion** 11:00am at All Saints Church
- Mon 11<sup>th</sup> **ROAD CLOSED - Front Road bottom** until 18<sup>th</sup> April
- Memorial Hall AGM** 7:00pm in the Annexe
- Tue 12<sup>th</sup> **PCSO Drop in session** 1:00-2:00pm at The HUB
- WI - "Mercy Ships"** 7:15pm in the Memorial Hall
- Wed 13<sup>th</sup> **Borough Councillors Surgery** 11:00am to 12:00pm at The HUB
- Fri 15<sup>th</sup> **Woodchurch Museum opens for 2022** 10:00-4:00pm. Open all Easter weekend.
- Walk of Witness** 10:00am at All Saints Church
- Sat 16<sup>th</sup> **Easter Egg Hunt** 3:00pm at All Saints Church
- Beachwood Pizza Van** 5:30pm in the car park
- Sun 17<sup>th</sup> **Benefice Eucharist (Easter Day)** 11:00am at All Saints Church
- Mon 18<sup>th</sup> **Easter Bonnet Competition** at Six Bells Park
- Fri 22<sup>nd</sup> **Annual Parish Meeting** 7:00pm in the Annexe
- Sun 24<sup>th</sup> **St George's Day Service** 11:00am at All Saints Church
- Mon 25<sup>th</sup> **Nightingale Walks** 6:00pm to 10:00pm at Boldshaves Gardens daily until 5<sup>th</sup> May
- Thu 28<sup>th</sup> **Woodchurch Parish Council Meeting** 7:00pm - 9:00pm in the Memorial Hall Annexe
- Fri 29<sup>th</sup> **Ashford Astronomical Society** - The universe can be an unfriendly place 7:30pm in the Memorial Hall
- Sat 30<sup>th</sup> **Beachwood Pizza Van** 5:30pm in the car park

**The Full Community Calendar can be found at**

**[www.woodchurchhub.uk/community-calendar](http://www.woodchurchhub.uk/community-calendar)**

If you would like to make a donation to help support The HUB then please go to The HUB web site and click the **"Donate"**

## WOODCHURCH SURGERY UPDATE

We have been waiting for the drip-feed of information about the Covid Boosters and sadly we are missing the detail. The crux is that the booster will be offered to anyone over 75 years old, living in a care home or identified as having a weakened immune system.

We have signed up to be a vaccination centre and we are expecting to receive vaccines soon. We had been told to use the National Booking Service which was going to cause havoc - however at the 11th hour they have changed their mind which is fantastic news. We can now order vaccines and can create appointment sessions and book people in directly. We expect to be running clinics from the end of April and more in May.

We are a bit worried that Covid has meant that some cancer screening programs have been missed. Anyone that thinks they may be behind on Breast Cancer screening can contact the screening service directly on 01227 783000 or 01622 710185. Screening is automatically offered to women at age 50 and the recall should be every 3 years until your 71st birthday. Women over 71 can ask for screening but will not be invited. 80% of all breast cancers are in those over 50 which is why it starts at 50. Also sometimes in younger women other tests can be better at identifying cancer. Breast awareness needs to be constant and not a 3 yearly event so please come and see us if you detect a lump or difference that you are not used to.

Looking forward, April celebrates Parkinson's disease, Irritable Bowel Syndrome and Allergies. With the arrival of all the stunning blossoms we also get the runny noses and streaming eyes. For the sufferers of hay fever please start the antihistamines and nasal steroids early to try and nip it in the bud. In the old-days we used to give a steroid injection before the season started but these days the preference is to give oral steroids if you get a really severe attack.

Our year starts again on April 1st so it is going to be a new start this month. Hopefully less Covid and more getting back to normal...

Best wishes on behalf of the Surgery  
Jack Hickey - GP

### Village Defibrillator Update

We have finally been able to order the new defibrillators after having been informed that, due to a shortage of microchips, we should not expect to receive them until September! However, last week we received a call from the supplier informing us that they had unexpectedly received a shipment from the manufacturer. We are expecting them to be delivered to Woodchurch during the week of the 5<sup>th</sup> April. Once they arrive we will get them installed and available as quickly as we can.




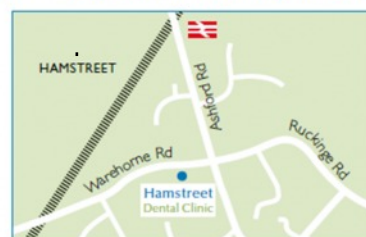
### Surgery Opening Hours

Monday	8.30am to 5.00pm	Thursday	8.30am to 5.00pm
Tuesday	9.00am to 6.00pm	Friday	8.30am to 5.00pm
Wednesday	9.00am to 5.00pm	Saturday and Sunday	closed

### Where to find us...

Hamstreet Dental Clinic  
Warehorne Road  
Hamstreet  
Kent TN26 2JJ

 Find us on facebook



Tel: 01233 733848

Email: hamstreetdentalclinic@gmail.com



Such a special and fantastic launch of our 'Thriving Together Gardening' (TTG) on Saturday 26th March, supported by so many

including The Mayor of Ashford, Cllr George Sparks, Cllr David Ledger, Keeley (Social Prescriber), Jilly from Woodchurch Market Garden, Linda from Woodchurch Cottage Flowers, Reverend Mike and Leigha at the Bonny Cravat.

So good discussing the benefits of social gardening and how TTG can enable & encourage more of this in Woodchurch.

THANK YOU to everyone for joining & supporting us, both before & during the event too.

Watch this space for progress for our 'pods' & Happy Gardening!

Thank you to Leigha and the Team at the Bonny Cravat for hosting our launch and to Habile Photography for capturing the moment so well for us.





# WOODCHURCH PARISH COUNCIL • **UPDATE** •

## The Section 106 Process

When any new development is considered in Woodchurch, your Parish Council has the opportunity to request a S106 agreement between the applicant seeking planning permission and the Local Planning Authority (Ref [www.gov.uk/guidance/planning-obligations](http://www.gov.uk/guidance/planning-obligations)). The agreement provides for a legal framework to secure both financial and non-financial contributions from a development. Projects usually focus on additional infrastructure to support new housing growth (e.g., sports buildings, recreational sites, spaces, improvements to services, etc). Once a sum has been requested (based on evidence) it can then only be spent on that specific project. To this end, your Parish Council is currently developing a register of potential S106 projects and would like to invite Woodchurch residents to suggest suitable projects. please visit [www.woodchurchhub.uk](http://www.woodchurchhub.uk) and complete the Section 106 suggestion form, or contact Councillor Molloy directly at [ciaranwoodchurchpc@gmail.com](mailto:ciaranwoodchurchpc@gmail.com).

As ever, please do get in touch with us about anything in our update or any other topic you wish to bring to our attention.

## How to contact your Parish Council

**In person:** By talking to one of your councillors - details on the Parish Council Web site

**By email:** [clerk@woodchurch-pc.gov.uk](mailto:clerk@woodchurch-pc.gov.uk)

**By phone:** 01233 733994

**Through The HUB:** Place your correspondence in a sealed envelope marked "Parish Council" and deliver to The HUB

**By post to:** Woodchurch Parish Clerk

Keg Barn, Hornash Lane, Shadoxhurst, Kent, TN26 1HX

**Through the contact form on the Parish Council Web site:**

[www.woodchurchhub.uk/parish-council/](http://www.woodchurchhub.uk/parish-council/)

Parish Council meeting dates, agendas and minutes can be found at [www.woodchurchhub.uk/parish-council/](http://www.woodchurchhub.uk/parish-council/)

## Upcoming roadworks in and around Woodchurch Information from KCC and one.network

### **Roadworks - Lower Road, Woodchurch**

**1<sup>st</sup> Apr - 5<sup>th</sup> Apr 2022 (4 Days)**

Closure in force: Traffic control (stop/go boards)  
Name: Lower Road, Woodchurch  
Description: JB \*1\* BROKEN GRATE and \*1\* JAMMED LID. Please replace 1 no. 450mm x 450mm broken lid and remove existing to tip, 1 jammed lid.

### **Temporary Road Closure - Front Road, Woodchurch**

**11<sup>th</sup> Apr - 18<sup>th</sup> Apr 2022 (8 Days)**

Closure in force: Road Closure  
Name: Front Road, Woodchurch  
Description: To allow sewer connection works to be carried out  
Diversion Route: 19.9 Km. About 23 minutes.  
Brook Street to Tenterden,  
A28 to High Halden,  
Plurenden Road to Bethersden Road,  
Bethersden Road to Front Road.

### **Temporary Road Closure - Church Lane, Shadoxhurst**

**25<sup>th</sup> Apr - 29<sup>th</sup> Apr 2022 (5 Days)**

Closure in force: All the time  
Name: Church Lane, Shadoxhurst  
Description: Drainage works between Woodchurch Road and Birchett Lane.

### **Temporary Road Closure - Lower Road, Woodchurch**

**6<sup>th</sup> May - 8<sup>th</sup> May 2022 (3 Days)**

Closure in force: Road Closure  
Name: Lower Road, Woodchurch  
Description: 2022 KCC MICRO SURFACING PROGRAMME

### **Temporary Road Closure - Front Road, Woodchurch**

**8<sup>th</sup> May - 9<sup>th</sup> May 2022 (2 Days)**

Closure in force: Road Closure  
Name: Front Road, Woodchurch  
Description: 2022 KCC MICRO SURFACING PROGRAMME



## Woodchurch Players News

'The God of Carnage' in the shape of storm Eunice (or was it Enid) - hit Woodchurch in February, and managed to shift most of the tiles on the houses in the village and on Friday 18<sup>th</sup> February left the Memorial Hall in darkness! 'Out of a suitcase' Theatre managed to do one production of their tour, in Rolvenden, which was very well received. Hopefully, they may return to Woodchurch to perform this very funny play some time in the future.

Our Spring production of 'The 39 Steps' directed by Ben Vincer (who brought us 'One Man Two Guvnors' in 2019) will be going ahead. Production dates are: Thursday 12<sup>th</sup> to Saturday 14<sup>th</sup> May at 7.30pm in the Memorial Hall.

This is a very funny award winning version of The 39 Steps. All the parts are covered by five actors. Tickets on sale soon - online or at the Hub.

Val Smith





# All Saints Church



Dear Friends,

A very Happy Easter to everyone in Woodchurch, from Reverend Mike and myself. Easter is such an important time for us as Christians, as we celebrate the resurrection of Jesus Christ - a new life and new beginnings.



We have lots going on over Holy Week and Easter. Please contact me if you would like details of online services. We have a "Walk of Witness" around the village at 10am on Good Friday 15th April, when we will be reading the story of Jesus' final days and saying prayers as we move around village locations. We have an Easter Egg Hunt in the churchyard on Saturday 16th April from 3-5pm. We have a Holy Communion service at 11am on Easter Sunday 17th April. Everyone is welcome - you might also like to come along to our St George's day service at 2pm on 24th April when we will be joined by local scout and guiding groups.

I am very grateful to Mr and Mrs Massey of the Boldshaves Estate who have kindly offered to donate to the church their gate proceeds from their Easter opening on 16th and 17th April from 2-6pm (£5 per adult entry).

Thanks very much to all who supported the Heart of Kent Show Choir Concert last month in church. We raised over £1300, and this will go towards completing our heating project. We have lots of plans for the maintenance and development of our church building, so please continue to support us - we don't get funds from anywhere else.

Our church PCC fundraising committees are dedicated to ensuring that our church building is looked after for future generations in our village. If you are interested in helping in any way, particularly in the management of historic buildings or in fundraising or volunteering, then do please get in touch.

The war in Ukraine continues, with terrible suffering and devastation for that country. We have been praying for peace and for justice; an end to fighting, and an end to all of the ➤

suffering. We pray too for all of the refugees; that they will find places of safety and welcome. Thanks to all who have supported our appeals for hygiene products and other items which have been dispatched. We will continue to look for ways to help.

Take Care and God Bless  
Reverend Sue

## Easter Egg Hunt



Calling all Chocolate Lovers

Saturday 16<sup>TH</sup> April at 3pm

Free Easter egg hunt around the Church Yard



Tea and cake will be served

All are welcome to come along and enjoy a social hour or so

In the event of rain the Easter Egg Hunt will be moved into the church

## Easter Flowers

You are once again invited to make a donation towards the Easter flower displays at All Saints in memory of a special person or loved one.

Names of those being remembered will be displayed in church.

Please place your donation in a sealed envelope clearly marked with the name(s) of the person to be remembered, before handing it in at the HUB or placing in the safe just inside the church door.

– Envelopes are provided at these points



## ALL SAINTS COMMUNITY COFFEE MORNINGS EVERYONE WELCOME!

Starting every **TUESDAY 19 APRIL** from 10am

In Church and outside if warm

**PLEASE COME ALONG** and enjoy

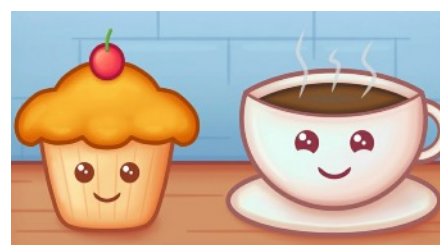
☕ **TEA, COFFEE, CAKE AND CHAT**

🍰 **NEW FRIENDS** and

☕ **CATCH UP WITH OLD ONES**

📖 **BOOKSTALL** 🧸 **CHILDREN'S PLAY ARE**

*We look forward to seeing you!*



Woodchurch WI gathered together on the occasion of our 95th Anniversary on a blustery, rainy evening, or perhaps one should say a "Shirley Hughes Evening," as suggested by one letter writer to the Sunday Times (13.03. 2022 edition). To explain, Shirley Hughes was a popular children's writer and illustrator, who recently sadly died. The letter writer was commending Shirley's ability to brilliantly and effectively capture the very essence of the windy, rainy weather, so often encountered in March, in her deceptively simple illustrations, and therefore such a day in her family had become known as a "Shirley Hughes Day"! However, despite the weather outside, the atmosphere inside was warm and welcoming and we celebrated in style with a series of "silly" games, beginning with that old standby "Higher or Lower," which calls for a quick assessment of probability /chance each time a card is turned. Everything works well when the card on display is quite definitely low or high, and one can predict with relative ease what the next card will be, but it is, of course, the grey area in between that presents the problems.

Another game, a more sophisticated variation of "Pass the Parcel," featured a tale about the hapless Wright family, who, as a whole, seemed to be extremely forgetful and were forever inconveniently leaving various items, such as school packed lunches, coats or keys behind. Mrs. Wright, having little else better to do, was then obliged to reunite these items with their owners. Indeed it seemed that the family would have left their own heads behind, had they not been attached to their bodies, but that would only have prolonged the game! There were three wrapped "prizes" and these were evenly distributed around the circle. The story was read aloud and each player holding a parcel was required to pass either to the left or right when the narrator mentioned either word. As a result each parcel was in a player's hand for seemingly less than a nanosecond, there being an awful lot of "lefts" and "rights/Wrights/writes" in this sorry tale of woe. At the end of the story, those currently holding one of the parcels were the three winners. It was not a game requiring any great skill or aptitude, but nonetheless, it was fast moving and provoked a great deal of mirth and merriment. Then, whilst partaking of a celebratory supper (wine/juice, cheese biscuits & nibbles) members' grey cells were taxed by a table quiz. Typical questions included "Which word can be added to "rising", "wards" and "set" to make a new word? (Answer - Up) and a

slightly more tricky (and maybe more saucy) question "What did Brighton Council decree part of its beach would be from 1979 onwards"? The answer was not, as many thought, a beach where owners were permitted to exercise their dogs, but instead this particular beach was reserved as a nudist beach, thus proving that the WI is always there to inspire and educate! The evening finished with a lusty rendition of "Happy Birthday" (possibly the world's most popular and most sang song) and then Lynn, our President and a special guest from East Kent Federation, Gwyneth Sutton, cut the delicious cake, after which we all wended our way happily homewards. Here's to the next 95 years!



Our next meeting, when annual subscriptions will be due, takes place on Tuesday, 12th April at 7.15pm in the Memorial Hall. Mr. Gehad Homsey will be our Speaker with a talk on "Mercy Ships" and the competition will be A Ship. Do join us if you can and any visitors can be assured of a warm WI welcome!



### Woodchurch Cottage Flowers

We are an artisan florist and flower grower. We grow and sell the most amazing seasonal English flowers. All grown here at our smallholding in Woodchurch in Kent. We are a small flower farm working with nature and the seasons.



Call or text 07969 449235

[www.woodchurchcottageflowers.co.uk](http://www.woodchurchcottageflowers.co.uk)

### Tai Chi and Qigong Taster

Tai Chi For Health taster for beginners will be held at the S&G Community Centre on Bank Holiday Monday 2<sup>nd</sup> May at 10:45am. Suitable for all ages and levels of fitness. £6 per session. To book your place contact Emma on **07587 167756** or email [taichiforyou@hotmail.co.uk](mailto:taichiforyou@hotmail.co.uk)



# Simple Kent Funerals

Relaxed, flexible, imaginative, economical, caring

Applefield Cottage, Redbrook Street, Woodchurch TN26 3QS

Call Toby on 07806 613297 • [www.simplekentfunerals.co.uk](http://www.simplekentfunerals.co.uk)

We work in an eco-friendly and environmentally-sustainable way and are certified as a net carbon neutral business



### The Six Bells Inn

Another month comes to an end and April is here with the beautiful Spring Flowers and the birds merrily building their nests. A pair of doves (I think they are) are nesting again under the first-floor window in the Wisteria in the same place as last year.



Our first-year anniversary is creeping up on us this month and what an amazing year it has been. We all feel like we have been here forever and have and still are made to feel so welcome by the Woodchurchonians.

With the anniversary fast approaching it makes us reflect on the past year and all that has happened. As with all villages people come and go but there are special customers who make a mark on your heart and we are very privileged to be able to meet such amazing people.

Unfortunately, another chef has left us for pastures new and the "Six Bells Chef Curse" strikes again!

But never fear we have been here before and the food will be back up and running again soon but in the meantime the warm welcome waits for all of our wonderful customers young and old and even older.

The extension is well underway and we are looking forward to the new opportunities that this additional space will provide. The rear garden is having a spruce up too and maybe, just maybe the rear garden will be as popular as the front patio area especially when the sun is out and the time is right for the odd drink or two or three.....

We have our quiz night coming up on Wednesday 6 April so make sure to book in to reserve your table.

We all look forward to seeing you here soon.

Happy Springtime

Emily and all at the Six Bells.

### News from Woodchurch Village Life Museum (WVLM)

Carnival cuttings and various artefacts were on display in Woodchurch Primary School hall in January and featured past carnival memorabilia from 1969 to 1996 with accompanying music and videos which had been digitised from cinefilm taken by a previous popular headteacher, Mr Grant, who led the school from 1966-1981.



The mini exhibition also shows life in the 50's and the coronation of Elizabeth II in 1953. These display panels and objects are now 'touring' the village with visits to the Jean Mealham Centre and Woodchurch House, returning to the school at the end of May for the pupils to study more closely.

Do you have any items from the coronation or other jubilee celebrations of our Queen? Would you loan or donate them to WVLM? Let enquiries@woodchurchhub.uk know or phone 01233 861381 to arrange collection. These would be fantastic additions to this special exhibition which will be installed at the museum on Susan's Hill for the Carnival weekend.

Also don't forget that we open on Friday 15th April- free admission, cold drinks, sit in our peaceful garden and enjoy our gallery full of presentations of our village life with the newest exhibition being 'Inspired by Woodchurch'. How

### Are you interested in local history ?

If you are, Woodchurch Museum is looking to expand their curatorial team. You do not need to have prior experience as a museum curator - just an interest in helping to preserve our local history. You will be part of a team of volunteers helping to develop our new displays, interpret our extensive collection and looking after more than a thousand years of Woodchurch heritage.

If you are interested and would like to find out more, please contact Joyce, Gina or Charles through The HUB at **01233 861381** or to [enquiries@woodchurchheritagetrust.uk](mailto:enquiries@woodchurchheritagetrust.uk)

We love the magical setting of Woodchurch so much we want to extend a discount of 10% off your meal at our Patio Takeaway (Grass fed burgers, veggie and vegan) when you visit the Rare Breeds Centre and live in a Woodchurch postcode.



Book online in advance to attend.

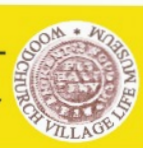
[www.rarebreeds.org.uk](http://www.rarebreeds.org.uk)

You can use the discount as many times as you like but proof of postcode required when placing order.

**Offer open until 1 September 2022.**



**MUSEUM 150+  
Lottery Draw**



Support your local museum- you could win a £50/£30/£20 prize every month. A ticket now costs £7 for 7 months. For more information please contact Joyce via The HUB - enquiries@woodchurchhub.uk or 01233 861381

### March 2022 Draw Results

<b>1st prize</b>	<b>£50</b>	<b>Jon Chaplin</b>	<b>591</b>
<b>2nd prize</b>	<b>£30</b>	<b>Maria Woodcock</b>	<b>710</b>
<b>3rd prize</b>	<b>£20</b>	<b>Joy Chapman</b>	<b>932</b>



## Woodchurch Local History Society

Our next meeting in the Memorial Hall is at 7:30pm on Monday April 4th. with our programme for the evening being a talk entitled 'Tenterden's Regency Theatre'. Little

reminds us of the Georgian theatre in Tenterden, which operated from about 1795 to 1845, except for some house names in Bell's Lane and some theatre handbills in Tenterden Museum. However, due to the hard work of Alan Stockwell in his book 'Finding Samson Penley' we are now able to get a clearer idea of theatre life and a feel for the kind of performances the audience could expect. The talk finishes with some film clips of 'Charley's Aunt' which



was originally a play in which a Penley family member starred. The Woodchurch Players chose to perform this comedy in 2007.

In our meeting on May 2nd (7:30pm, Memorial Hall) we welcome Mary Smith (a retired Headteacher) who will give us her popular talk entitled 'A Schoolgirl's War'. In this she describes how the schoolgirls of Maidstone Grammar School adapted to school life in WW2. She will illustrate her presentation with many charming sketches created by the art teacher at the time.

New society members are always welcome paying £10 annually whilst visitors pay £3 at the door. All are very welcome.

Geoff, 01233 860393.



ABC Digital Skills



### Free digital skills sessions in Ashford

If you need some help with your digital skills, why not join some upcoming sessions at the Job Club?

Beginners are welcome, or you can brush up on your current skills. Take the first step, it could lead to a fantastic opportunity for you.

Visit <https://orlo.uk/5V0qs> for more information

## Bonny Cravat

Last weekend we were delighted to host the launch of the Woodchurch in Bloom 'Thriving Together' initiative. We were lucky to have beautiful sunshine for the event and lots of you in attendance to show your support!



Thank you to everyone who was able to make it, it was a wonderful morning had by all. We are honoured to be one of many 'pods' in the village and hope that these will really help bring the village together.

We have an exciting month coming up here at the Bonny!

Live music will be returning at 8pm on Saturday 16th April so make sure you pop that date in your diary! We look forward to seeing you all with your dancing shoes!

We have another quiz coming up on Tuesday 5th April at 7pm; so don't forget to book in your team! Someone needs to win that cash prize rollover!

Thank you from everyone here for your continued support; and please do remember to pop in and visit the beautiful new Thriving Together Area in our garden.

Bookings and enquiries on 01233 860345

## WOODCHURCH ART SOCIETY IS BACK!

After two long years we are pleased to announce the return of our popular



### ANNUAL ART EXHIBITION



Spring is in the air, so it's time to prepare  
May is the month when we Exhibit and share

Will it be oil or acrylic you race to see  
Or perhaps a cup of tea?

Our Artists are preparing the way  
For a most enjoyable day

So make a date to come our way!

**Woodchurch Memorial Hall**  
Please note the new times

**Friday May 27th 7pm - 9pm**  
**Saturday 28th May 10.30am - 4.30pm**  
**Sunday 29th May 10.30am - 4.30pm**

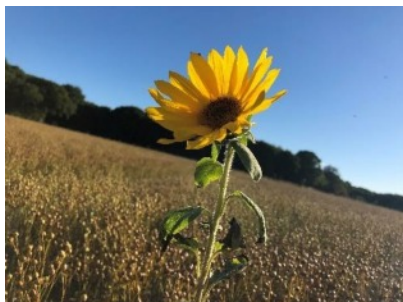
Refreshments

**FREE ENTRY**



### Collecting money for Ukraine Sunflower Competition 2022

We are pleased to confirm that following the success of our 2021 competition, we will be running it again this year. With the Sunflower being Ukraine's national flower, this year we hope even more people may wish to join in.



To help, thanks to some generous sunflower seed donations, we will be putting envelopes with seeds in Woodchurch HUB throughout April (while stocks last). Any voluntary donations for the seeds will all be sent to the DEC UKRAINE HUMANITARIAN APPEAL.

### Christmas Tree on the Green 2022

Following approval from Woodchurch Parish Council, Woodchurch in Bloom are delighted to confirm we will be coordinating the Christmas Tree on the Green again for 2022! It may seem a little early to be talking Christmas (!) however we are keen to hear from any groups who may like to work with us on this. Thank you already to The Big Thin Red Line for their continued support.

Christmas Tree lights switch on will be Friday 2nd December!

### **Thriving Together GARDENING (TTG)**

At the time of writing, we are looking forward to our launch of TTG and information morning on Sat 26th March. A big Thank you in advance to the Bonny Cravat for hosting this for us.

A Quick reminder, this initiative is to help combat loneliness and provide all the benefits of therapeutic horticulture, through social gardening in the Village. We are having 'pods' at the Jean Mealham Pop in centre, both Pubs, the Surgery, the School and the Old Post Office Coffee shop (for starters!). All these locations are really committed to be part of this and help us reach out to all those that may benefit. We are also linking with the Social Prescribers in our Primary Care Network.

At each pod we will be having 1 or more of the following strands:

- Growing vegetables
- Growing Herbs
- Growing flowers for cutting
- Crafts
- Mindfulness areas

The plan is to use produce from the pods around the Village, including donations to the food bank

Interested in spending some time with friends whilst helping with a little gardening to benefit the Village, then please either speak to any of the locations listed above or contact us direct using the details below

Email: [woodchurchinbloom@hotmail.com](mailto:woodchurchinbloom@hotmail.com)

Website: [www.woodchurchinbloom.com](http://www.woodchurchinbloom.com)

### 'WoodchurchYard Together' (WYT)

**We still need you!**

In 2018, we started 'WoodchurchYard Together' to help keep our churchyard tidy and accessible for all to enjoy throughout the year. We've received huge support, with local people volunteering time, donations, tools, and refreshments. With no funding from any local bodies, our continued success relies on ongoing kind support from the community.

**We are now looking to raise £500 to help us cover the ongoing costs of maintaining the churchyard (approx. £500 per year).**

**We have our own bank account! so any donations made direct are guaranteed to be used for fuel and tools alongside their maintenance.**

Last year, our volunteers kindly paid upfront for the purchase of two new push-mowers and already these are making a huge difference in helping us to keep

on top of the grass cutting - so far, we've been able to reimburse 70% of the upfront costs loaned to WYT by our volunteers.

Finally, do drop by to see us on Tidy weekends as we'd love to show you what we're up to and talk to you about the churchyard management plans.

**Our next Churchyard Tidy is Saturday 2 & Sunday 3 April; 10am-4pm**

#### **Ways to donate:**

For back details, please contact [Philippa@woodchurch.btinternet.com](mailto:Philippa@woodchurch.btinternet.com)

Cash donations to Philippa, Liz or Linda on WYT weekends and Via Woodchurch HUB (please put in an envelope with 'WYT' on the outside)





# Everything Outside

Bringing New Life  
To Your Garden

For A Quick Quote From A Company You Can Trust Call

☎ 01580 766 232 ☎ 07795 465 861

## Welcome To Everything Outside

We cover a wide range of services to meet the requirements of our ever-growing client list, if you are looking for a company you can trust to provide a high standard of quality work covering

- ✓ Gardening
- ✓ Garden Design
- ✓ Fencing
- ✓ Clearance
- ✓ Landscaping
- ✓ Hedge Cutting
- ✓ Tree Surgery
- ✓ Digger Work

and much more. Then call our experienced team today on 07795 465 861. To view our full range of services, click on the link below.

Our head office is based in Tenterden, Kent and means we are in the perfect location to proudly service Kent and East Sussex. All our services are tailored to each job we carry out and our team are experience in all aspects of fencing and landscaping services making us your number one choice for all work you require.

Great Work

Great Reputation

Great Price

O  
U  
R  
  
S  
P  
O  
N  
S  
O  
R  
S



**Nicholls Restores**

Antique furniture restorer & Wood finishing specialist



01233 860130 - nichollsrestores@btinternet.com

## Tenterden Removals

The Professional Removers in the Weald



Secure Storage at a Competitive Price

**Hinges&Brackets**

PROPER IRONMONGERS

Unit 12 Evegate Business Park,  
Station Road, Smeth,  
Ashford. TN25 6SX

**Martin Davey**

Director

Tel: 01233 645249

Email:

post@hingesandbrackets.co.uk

Website:

www.hingesandbrackets.co.uk

Proper ironmongers – because we want to sell proper stuff that works.

**Need a  
planning  
application?**

**VH**

Call 01233 861177  
vernacularhomes.com

**fab feet**  
Professional Foot Healthcare

www.fabfeethealthcare.co.uk

Delivering high quality Podiatric care in the  
comfort of your own home

Providing a reliable and friendly service of professional  
treatments for all of your foot ailments:

Call Michelle on:

**Tel: 01233 731207**

Registered & Insured

British  
Association  
Foot Health  
PROFESSIONALS



**Try our professional  
Home News  
Delivery service**

**New customer introductory  
offers available**

Have your paper delivered before you go to work and  
read it with your breakfast!

- ✓ Early delivery - before 6.30am (7.30am at weekends)
- ✓ Excellent communication - phone or email ALWAYS responded to
- ✓ Different billing options available
- ✓ All national and local newspapers available to order
- ✓ All magazines available to order
- ✓ Well established reliable company with over 4,400 customers

**Place your order today by telephone on  
01580 763183**

or email us at mail@jackiesnews.co.uk  
or go to www.jackiesnews.co.uk/place-your-order





EST. Over 35yrs

**Extensions  
General Building  
Property Maintenance  
Brickwork/Stonework Specialist  
Landscaping**

Free Estimates

Chris@cgmbuildersltd.co.uk

[www.cgmbuildersltd.co.uk](http://www.cgmbuildersltd.co.uk)

**KENT**   
**HOLIDAY COTTAGES**

+44 (0) 1233 860 293

info@kentholidaycottages.co.uk



**WOODCHURCH**

SHOP BAR WINE TASTING TOURS

Thursdays to Sundays 11am - 5pm

<http://woodchurchwine.co.uk> tel:01233 860276

**A big "Thank You" to all of our  
sponsors, who help keep this  
Newsletter free of charge**



*Remedial massage therapy.*

**Your Local Woodchurch Massage Therapist**

- Remedial Massage
- Sports Massage
- Holistic Massage

- Ultrasound Therapy
- Electrotherapy

- Injury Treatments & Rehabilitation
- Rehabilitation Taping/Strapping
- Athletic Taping/Strapping



**Bookings - 07799221043**

[www.musclewhisperer.org.uk](http://www.musclewhisperer.org.uk)

**Treatment Room - Little Vale TN26 3QW**

[musclewhisperer@outlook.com](mailto:musclewhisperer@outlook.com)



**WE'RE OPEN:**  
MON - FRI: 08:00 - 17:30  
SAT: 08:00 - 12:30

**SO MUCH MORE  
IN YOUR LOCAL  
COUNTRY STORE**



**Of course we sell agricultural parts and machinery.**

**We also sell outdoor and PPE clothing, alongside hand tools, adhesives, hardware, barn paint and much more...**

**We're online too: [ernestdoeshop.com](http://ernestdoeshop.com)**

**Hendon Barn, Woodchurch  
Ashford, Kent TN26 3QP  
Tel: 01233 224860**

 **ernestDOEpower**  
*where you buy with confidence*



## 1st Woodchurch Scout Group - Norway visit, February 2022 by Julian West

The day had come when we were off to Norway. We have some good friends out there who we have known since 1989 when they had been let down by a Scout group in Dartford and we stepped into the breach.

This year we would be taking 5 leaders and 8 scouts. At 08.00 we were getting excited as we had loaded the last bag onto the bus and were waving as we were on our way.



In just over an hour we were in the outsize car park at Stansted airport (for everything other than cars) where we quickly unloaded the bus and rang for the pickup shuttle bus to come and get us. We quickly checked in as some of the travel regulations had been relaxed the day before. I must have looked suspicious though as we passed through Customs I was the only one who was stopped. Once into the departure area we quickly established a base and the scouts were let loose to look round.

At last we were climbing the steps to board the plane and we found our seats. It was then that one of the leaders started feeling very unwell and had to leave the plane - just as the doors were about to be closed.

It was not long before we landed at Torp airport in Oslo, where we quickly found our bags and sailed through passport control and Customs. We squeezed everyone, along with all our luggage into three cars and we were off to Skien - driving on the wrong side of the road or course! After a hearty meal of Elk stew in the Bethal (church) we then drove about 20 Km to Lucksif where we were staying in the Red Cross house. There had been lots of snow and we needed to dig a path in order to reach the house but once inside we lit the wood burner and then sorted out our rooms. As everyone told me that I snore (!) they decided to put me in a room all by myself. It continued to snow overnight and it was lovely to see outside the window as we prepared breakfast - "Bread and Spread". This consisted of bread, ham, eggs, spreads, fresh fruit and drink.

The first day we all skied cross country and most of the scouts did about 8 Km. This was an achievement and they were glad to get back to the hall. Unfortunately we were unable to do the downhill skiing that afternoon and so we went back to the hall for more Bread and Spread. The evening was spent playing cards, relaxing and getting ready for the next day.

Another lovely morning and we were joined by local scouts and some of their leaders. During the day we all cooked wieners (sausages) in the snow and by the end of the day most of the scouts had mastered the new type of skiing.

The following morning the leaders were awake and had already had tea and breakfast before the rest of the party were awake. Once they had eaten we sent some of the scouts out to the cars to clear them of snow. It was soon time for us to go down to Skien ice skating the rink - it is as big as the Julie Rose Stadium. Kari (our Norwegian host) had brought cake and we also cooked wieners on the ice rink bar-b-que's. In the afternoon we went shopping before returning to the house.

The next day we all went swimming at a local college pool. It was great fun plus it gave the scouts time to wash up and get clean ?? After the swimming we met up with scouts from 3 local districts and together we did some fire lighting and they cooked their food. Everyone enjoyed the day but it was soon time to say good bye and for the last time get into our sleeping bags. The week had gone so fast and soon it was our last day. As we did not have to be at the airport until well into the afternoon shopping was on the cards. The last of the scout's Norwegian money was burning a hole in their pockets so the leaders had coffee and the scouts were let loose for the last time.



We got back to the airport in plenty of time for the plane and all was running well until we tried to book in. The lady at the check-in said that we ALL needed to have filled in a form in person and that this could only be done on-line. Without these we would not be allowed onto the plane. Luckily we had three leaders who were up for this challenge and so they quickly hurried away to try to find an Internet connection. After they were about to enter the details of our last child the check-in lady came over and apologised to us saying that we were able to include all the children on one single form! We then quickly headed for the gate and without any further problems we were soon all on the plane and looking forward to getting back to our families.

**Till next year, we thank you for being our friends Norway and we are waiting for you to come over to visit us in 2023.**



### Six Bells Residents Association

Easter Monday will see some of the residents displaying their Easter bonnets for the competition being organised by the committee.

The judging will take place at the buffet lunch on that day. Let's hope the weather will be fine!

The wheels are now moving into top gear as Carnival day rapidly approaches. A massive thank you to everyone getting involved, and especially to the steering committee who have raised around £14k

to help make the day possible. We encourage everyone to set the weekend aside to take time to enjoy the fun and to experience the return of Woodchurch Carnival after its 26 years absence.

The event has been set up so that everyone can enjoy the day without breaking the bank. In these troubled times, where money is often a struggle, don't stay away as many of the events/shows are free and others are very cheap. Most games stalls are only 50p and a ticketing system will be in use for the fair rides and game stalls. Tickets will be available to buy from The HUB on and before the big day.

### The Parade:

There is still time to register to be in the parade as either a float or walking character. This month the team will be working with those already registered offering support where they can. If you want to take part but are unsure how, talk to a member of the team or contact us through the [Carnival Web Site](#). Prizes will be awarded for floats that really catch the judges' eye.

### Stalls:

There has already been a great take up from stall holders and there will be a lot for you to browse and buy - including a variety of food and drink, memorabilia and many other items. This month stall holders will receive their details for the day and offered support if needed.

### The arena, bands and lasers:

There will be some great displays on the day and you will have the chance to watch and get interactive!

There is also a separate music arena where a line-up of 5 bands will be playing a variety of music.

We can confirm now that the climax to the carnival day will a laser show set to music in the church yard and onto the church. This will replace the more typical firework display (as we feel it is more environmentally and animal friendly) and will be a first for Woodchurch. The display will take place around 10-10:30pm as soon as darkness permits.

Timings are being finalised this month and the program will soon be announced.

### Woody, our mascot:

Our carnival mascot has grown roots and we have commissioned a badge that can be purchased now from the hub, museum and other locations. Woody is also set to start touring and will be visiting many places prior to the carnival.

### Village Beacon:

The carnival committee have supported the Parish Council with a donation towards a beacon on the Green. This will be lit for the first time as part of the national celebration plans on the 2nd June. More detail to follow.

### Street Parties:

The 5th June is the national Street Party day and we encourage everyone to have their own street or front garden parties. As we did on VE day last year the roaming camera car will be going around again to capture you all with the aim of making a commemoration photo book of the day/weekend. If you take photos over the weekend please send them to us and we will include as many as we can. The book will be given to Woodchurch Museum to become part of our Woodchurch heritage.

### Volunteers day: Saturday 7<sup>th</sup> May in Woodchurch Memorial Hall

So many of you have offered to help and we really appreciate this as it's a tall task to run the day, we are all excited but also nervous as we want this to be a great success for everyone to enjoy.

We would therefore like to invite the village to join us on the 7<sup>th</sup> May so you can see the days plans in full. This will be the day when all those who have volunteered will be matched up with their tasks. Refreshments will be available on the day.

I am sure you can appreciate that to make this happen we have a lot of balls being juggled at present. Please support us as we are volunteers too and are learning more each day about what it takes to organise a Carnival. Remember its not too late to enter a display, float or stall and we also have opportunities for businesses to support us by advertising with us, either in the brochure or on the arena.



**WOODCHURCH CARNIVAL**

**Woody Woodchurch Village Mascot Pin Badge**

Supported by  COMMUNITY FUND

**Woody WOODCHURCH**

*Take me home for a minimum donation of £1*

All proceeds to the Woodchurch Carnival Fund

[www.woodchurchcarnival.uk](http://www.woodchurchcarnival.uk)  
enquiries@woodchurchcarnival.uk

**Pick one up from** The Hub, Old Post Office Coffee Shop, The Bonny Cravat, Six Bells Pub or Museum





# WOODCHURCH 2022 CARNIVAL



## FUN DOG SHOW

**Saturday 4th June**

**Bring along your canine companion to the Carnival “Dog Show” and enter your pet into the this years prestigious competition!**

**Show will be judged by  
Battersea Dogs Home**

### Show classes

- **Best Lookalike (owner & dog most alike)**
- **Most Fabulous Fella – Best Male Dog (1 year plus)**
- **Loveliest Lady – Best Female Dog (1 year plus)**
- **Cool Pup – Best Puppy (6 months – 1 year)**
- **Most Fantastic Family (3 or more dogs)**
- **Best Rescue Dog**
- **Golden Oldie – Best Dog Over 10 years**
- **Dog With The Waggiest Tail**



**Register your pooch online at [www.woodchurchcarnival.uk](http://www.woodchurchcarnival.uk)  
or visit The HUB**

# **Woodchurch Carnival Volunteers needed**

Carnival day (the 4th June) is rapidly approaching and we already have a full program organised

**Floats - Fairground - Stalls - Dog Show  
Live Music - Refreshments—Laser Show  
and much more...**

We still need more volunteers to help on the day to make Carnival '22 a big success. These include...

**Marshalls - Car Parks - Information Point  
Litter - Stall manning - Cake Baking  
Marquee set up and dismantling  
General Help and Support**

**If you can help please register at  
[www.woodchurchcarnival.uk](http://www.woodchurchcarnival.uk)**

**visit The HUB**

**Come along to our Volunteers day, 7th May  
10am - 4pm in the Memorial Hall**