



WOODCHURCH COMMUNITY NEWS

The village community working together

December 2021

Contact us: Telephone 01233 861381 Email enquiries@woodchurchhub.uk Web www.woodchurchhub.uk

OVER 900 COPIES distributed every month in the Woodchurch area

WOODCHURCH Community Calendar



Weekly events:

Saturdays:

Boot Camp 9:00am-10:00am on the Village Green

Mondays:

Pilates 8:30am and 9:30am in the Memorial Hall

Tai Chi and Qigong 9:45am - 11:45pm at the S&G Community Centre, Lower Road

Knit and Natter 2:00pm - 3:30pm in the Pop In Lodge

Beavers 6:00pm - 7:00pm in the S&G Community Centre, Lower Road

BodyTone 6:15pm - 7:00pm at the Memorial Hall

BodyFlex 7:15pm - 8:00pm at the Memorial Hall

Scouts 7:30pm - 9:00pm in the S&G Community Centre, Lower Road

Tuesdays:

Pilates 8:30am, 9:00am, 10:15am and 6:00pm in the Memorial Hall

Little Leaves Forest School 10:00am - 12:00pm under 5's Play Group based in Woodchurch

Community Warden 1:00pm - 3:00pm in the HUB

Puzzle Club 2:00pm - 4:00pm in the Pop In Lodge, Lower Road

Cubs 6:00pm - 7:00pm in the S&G Community Centre, Lower Road

Painting Workshop 8:00pm - 9:00pm at the Memorial Hall

Wednesdays:

Pilates 8:30am and 9:30am in the Memorial Hall

Pop-In 2:00pm - 4:00pm Tea and coffee and boot fair marquee at the Jean Mealham Pop-In Centre

Rainbows 4:15pm - 5:30pm in the S&G Community Centre, Lower Road

Fish and Chips 4:30pm - 7:30pm in the Village Car Park

Bootcamp 6:15pm - 7:00pm at the Memorial Hall Annexe

Thursdays:

BodyFlex 6:15pm - 7:00pm at the Memorial Hall

BodyTone 7:15pm - 8:00pm at the Memorial Hall

Art Society 10:00am - 1:00pm at the Memorial Hall

Previous editions of the Newsletter can be found on The HUB Web site
www.woodchurchhub.UK



Thursdays (continued):

Badminton 7:00pm - 11:00pm at the Memorial Hall

Explorers 7:30pm - 9:30pm in the S&G Community Centre, Lower Road

Other Events:

Thu 2nd **CARM** 10:00am - 12:00pm in Jean Mealham Pop-In Centre

Sat 4th **WI Christmas Market** 2:00pm to 4:00pm at the Memorial Hall

Woodchurch FC 2:45pm - Woodchurch First vs Smarden on the village green

Sun 5th **Morning Worship** 11:00am at All Saints Church

Carol Service 6:00pm at All Saints Church

Mon 6th **Local History Society** members evening 7:30pm at the Memorial Hall

Tue 7th **PCSO available** 1:00pm to 3:00pm at The HUB

Fri 10th **Craft Sessions** at All Saints Church 10:30am and 3:15pm

Sun 12th **Newspaper collection** by The Scouts

Holy Communion with Baptism 11:00 at All Saints Church

Mon 13th **Bereavement Service** 7:00pm at All Saints Church

Thu 16th **Christingle making** - Woodchurch Primary School

Fri 17th **Open Afternoon** 4:00pm to 7:00pm at All Saints Church

Ashford Astronomical Society Christmas Quiz 7:30pm in the Memorial Hall

Sat 18th **Woodchurch Christmas Market** from 10:00am till late at the Pop-In

Woodchurch FC 2:45pm - Woodchurch Reserves vs Sellinge on the village green

Woodchurch FC Dinner 7:00pm in the Memorial Hall

Sun 19th **Woodchurch Christmas Market** from 10:00am till late at the Pop-In

Morning Worship 11:00am All Saints Church

Thu 23rd **Woodchurch Parish Council Meeting**

7:00pm - 9:00pm in the Memorial Hall Annexe

Fri 24th **Crib Service with Christingles** 6:00pm at All Saints Church

Sat 25th **Holy Communion Service** 10:00 at All Saints Church

TO VIEW THE FULL CALENDAR ONLINE GO TO
www.woodchurchhub.uk/community-calendar/

All Saints Church



Dear Friends,

We have enjoyed putting together a programme of events and services for Advent and Christmas in Woodchurch, as well as in the other villages in our group of churches. Last year most services were online, so this year we are looking forward to a mix of indoor, outdoor and online ways to mark and celebrate this season, and we hope you will be able to join us. It will be lovely to be singing carols again after all this time.



Please join us in All Saints Woodchurch as follows:

- **Sunday 5th December** at 6pm - Carol Service
- **Friday 10th December** at 10.30am for adults and 3.15pm for children - craft sessions to make angels to decorate the church
- **Monday 13th December** at 7pm - Bereavement Service - a space to reflect and remember those we have loved and lost.
- **Friday 17th December** 4-7pm - Open afternoon in All Saints - Angel decorations, Christmas Music, mince pies and mulled Wine
- **Christmas Eve (24th)** at 6pm - Crib service with lighting of Christingles
- **Christmas Morning (25th)** - Communion Service at 10am

We have no restrictions in church now, but please take steps to protect yourself and others if you are attending services which may be well attended, especially on Christmas Eve. We would encourage the use of lateral flow tests, to protect yourself and others.

We mark time during Advent by lighting our candles on the Advent wreath - perhaps at home you have advent candles or an advent calendar. I like to share my Paddington Bear one with the school children - it is produced by UNICEF, so behind each door we discover how our donations help children in developing countries.

May I take this opportunity to wish you all a Merry Christmas and a Happy and Peaceful New Year 2022 from both Reverend Mike and myself.

Every Blessing, Reverend Sue 01233 820266

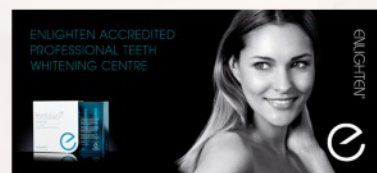
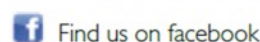
Surgery Opening Hours

Monday to Friday 9am to 5pm



Where to find us...

Hamstreet Dental Clinic
Warehorne Road
Hamstreet
Kent TN26 2JJ

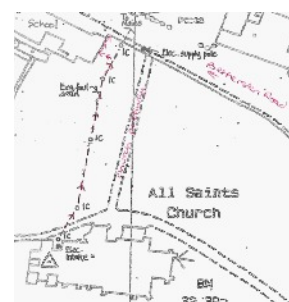


Tel: 01233 733848

Email: hamstreetdentalclinic@gmail.com

Churchyard Electrical Installation

I wanted to let everyone know about some work we have got coming up in All Saints Churchyard in January. The work will last around 2 weeks, beginning on 10th January, and is part of our new heating and lighting installation. There will be a channel dug across the churchyard, marked on the diagram, to the right of the path as you look at the church. No grave will be disturbed, and the route will go around the memorial garden for ashes adjacent to the school. There will be days when this area will not be accessible, but the workmen will be very careful, and are being supervised by an archaeologist to ensure that there is no disturbance to the graves. Footpath access is not expected to be affected. Please contact me if you wish to discuss this further.



Reverend Sue

Simple Kent Funerals

Relaxed, flexible, imaginative, economical, caring

Applefield Cottage, Redbrook Street, Woodchurch TN26 3QS

Call Toby on 07806 613297 • www.simplekentfunerals.co.uk

We work in an eco-friendly and environmentally-sustainable way and are certified as a net carbon neutral business

WOODCHURCH SURGERY UPDATE

The two things you can count on in life are actually Dispensary Manager Sue's dangly Christmas earrings! No doubt they will be joined by the Christmas music in the Dispensary and the sound of our Sirens in the dispensary; who, it should be noted, have had no formal vocal training.

Like every year we are open every day except for weekends and Bank Holidays. There is no need to panic for prescriptions or for anything else really, although our festive sense of joy is undoubtedly better maintained by keeping the work as strictly necessary as possible over the festive period when we are more lightly staffed. The doors remain open from 8am - 6.30pm when we then hope to skip away and sing carols and encourage Santa to find his way to us all.

We are indebted to the numerous village individuals and groups that help reduce social isolation and as the dark nights are closing it is easy to become melancholy. I'm pleased to see the Honors' recognition of Richard Carley's work with the Pop-in and he has extended the opening of the Pop-in for lunch and tea-time on both Christmas Day and Boxing day. He assures me there is no need to register but just "pop in".

I've been thinking about a theme for this month and can't get "Gout" out of my head. It isn't what it seems - it isn't just venison eating, port swilling soaks that get it. Gout is an exceptionally painful swelling of a joint; most commonly effecting the big toe or the knee but can really be any joint. It is a crystallisation of uric acid within the joint which then causes a massive inflammatory reaction. Purines are essential building blocks for our body but consuming food and drink containing high levels of purines raise your uric acid levels increasing your chances of gout. Without putting off the 5-a-day even some vegetables are high such as cauliflower, spinach and mushrooms. Other food includes fatty red meat, bacon, liver but also sardines, anchovies and dried peas. Beer is the worst fluid contributor followed by liquors although even soft drinks containing fructose will increase your risk.

Generally the rule of thumb if the dreaded gout is coming is to get on the water and, if allowed, start some anti-inflammatories and if it isn't settling call your doctor. If it is recurrent then lifestyle changes and medication might help. As with all these things, some poor souls just get gout regardless of how clean living they are.

On a covid note...

At the time of publication our last Covid vaccination clinic will have been done and we should have covered all the housebound and those in care homes. The take-up for the booster in pharmacies has been brilliant so we are redundant now in this phase and have given notice on our contract as a PCN.

Just as everything is settling and the world seems a bit safer

it has been alarming to read the building press of the latest variant in Southern Africa. Covid is just relentless and this news clouds the joy that 2022 will be the opening up that has been envisioned. I'm sure that the news around vaccine cover will come out over the next couple of weeks. Hopefully Pfizer and AstraZeneca have more protection from it than currently thought.

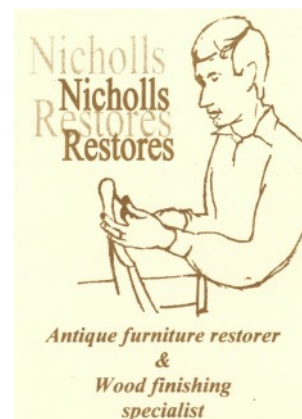
I'm sure we will all enjoy a less restrictive festive time this year and as long as you've been good this year Santa will find you. If you find yourself at a loose end then pop in to the Pop-In.

With best wishes for Christmas on behalf of the Surgery,

Jack Hickey - GP

RESTORATION OF ALL TYPES OF ANTIQUE FURNITURE

- Traditional methods of fine cabinet making and finishing.
- Missing parts reproduced to match grain and colour.
- Wood finishing specialist to all wood artifacts including staircases, floors & panelling.
- Restoration of fire and water damaged furniture and timberwork also undertaken.



Tel: 01233 860130

www.nicholls-restores.com

email: nichollsrestores@btinternet.com



**Try our professional
Home News
Delivery service**

**New customer introductory
offers available**

**Have your paper delivered before you go to work and
read it with your breakfast!**

- ✓ Early delivery - before 6.30am (7.30am at weekends)
- ✓ Excellent communication - phone or email ALWAYS responded to
- ✓ Different billing options available
- ✓ All national and local newspapers available to order
- ✓ All magazines available to order
- ✓ Well established reliable company with over 4,400 customers

**Place your order today by telephone on
01580 763183**

or email us at mail@jackiesnews.co.uk
or go to www.jackiesnews.co.uk/place-your-order

Irresponsible vandals put villagers lives at risk

During the evening of Saturday 13th November vandals stole the defibrillator from outside The HUB. It was found on Sunday morning on the village green having clearly been used as a football near the 5 a side goalposts - which had also been pulled out of the ground. When found, the unit was badly dented and covered in mud with pieces of it spread across the grass. The incident was immediately reported to the police.



The Parish Council has had the damaged unit inspected by a local defibrillator specialist, who concluded that it was beyond repair. This senseless act of destruction has not only resulted in a cost to the village of over £1,000 to replace this life-saving piece of equipment, but has potentially put village residents lives (including their own families) at risk.



We would like to thank Hopkins+ of Romney Marsh for inspecting the damaged unit for us and for providing us with a loan unit whilst ours is being replaced.

There are currently only two defibrillator units that always available in the village area - one at The HUB and the other is located at the entrance to Shirkoak Park.

Other defibrillator units are located in Woodchurch House, Woodchurch Surgery, Woodchurch School and at the Pop-In Centre - though these are not accessible at all times.

Meet our Parish Councillors

Paul Glasgow

I joined the Woodchurch Parish Council in September this year, so I am very much the newbie. Having lived in the village for 5 years now, I am keen to help Woodchurch remain a wonderful place to live and also see if we can develop certain initiatives to make it even better for residents old and young.



I lived in London for 20 years, and still work there, but it's very much the great outdoors for me and my young family now and we love it! I have received a warm welcome to the Parish Council from the other members of the team (thank you), and am excited to see what we can achieve over time. When I am not working or daddying I am a keen golfer (Littlestone member), enthusiastic runner (completed the Woodchurch 10&5K run) and huge sports fan.

My young sons are very enthusiastic little workers, as exhibited at the Windmill path clearance, so here's to some more volunteer events to keep Woodchurch looking great !

How to contact your Parish Council

In person: By talking to one of your councillors - details on the Parish Council Web site

By email: clerk@woodchurch-pc.gov.uk

By phone: 01233 733994

Through The HUB: Place your correspondence in a sealed envelope marked "Parish Council" and deliver to The HUB

By post to: Woodchurch Parish Clerk

Keg Barn, Hornash Lane, Shadoxhurst, Kent, TN26 1HX

Through the contact form on the Parish Council Web site:

www.woodchurchhub.uk/parish-council/

Parish Council meeting dates, agendas and minutes can be found at www.woodchurchhub.uk/parish-council/

Woodchurch Brownies

Calling all girls aged 7 to 9 1/2 why not come and join us on Wednesday evenings 6 pm till 7.20 pm.



We have lots of things planned for you to enjoy during the meetings and trips out.

Contact Skye on 07908 823716 if you would like to visit one evening. Why not being a friend.

And if you are soon to be 10 why not join guides from January. Call Tracy 01233 861236

Photocopying and Laminating at The HUB

We can scan, print, copy and laminate A3 pages and can print booklets.

Photocopies (per side) A4 b/w - 10p, A4 colour - 15p

A3 b/w - 15p, A3 colour - 20p

Laminating (per sheet) A4 - 15p, A3 - 25p

The HUB Christmas Closure

The HUB will be closing its doors between Christmas and the New Year, however if you need some urgent assistance during that time please phone or email and we will do our best to help. We will be closed from Thursday 23rd December and will reopen on Monday 3rd January.

enquiries@woodchurchhub.uk - 01233 861381

The Six Bells Pub

We have been very busy over the past month with our first Quiz night taking place which was such a fun evening with a wonderful turn out. We have our next one scheduled for 1 December with a microphone in full working order.

We were honoured to welcome everyone on Remembrance Sunday for drinks and to be asked to host a lunch. There was a wonderful but also a somber atmosphere. The turn out for the Parade was overwhelming with Woodchurch again showing what a caring, united village it truly is.



Our weekday menus and Sunday Roasts prepared by our wonderful Chef Steve are proving to be extremely popular and with his Christmas Menu starting 3 December we are in for a busy time.

We had a fun evening this evening with Bing Quo hosted by the famous "Johnny Quo" a blast from the past with lots of songs that brought back so many memories accompanied by lots of laughter.

We are hosting the "Billy No Mates" Christmas Party 17 December which is proving to be more like "Billy with Lots of Mates" as the list is growing longer everyday so if you wish to join in please call in and sign up.

We would also like to let everyone know that we will be open for drinks Christmas Day Lunch time.



We have our New Years Eve Party Extravaganza with the completely famous or infamous Johnny Quo and an optional fancy dress theme of something starting with the first

letter of your name. The suggestions so far being made do make the mind boggle and it should prove to be an extremely entertaining evening.

Thank you so much Woodchurch for making The Bells such an amazing friendly place for all of us.

Merry Christmas one and all from Emily and the team.

Six Bells Park

On Tuesday 16 November residents from the village and Shirkoak Park joined residents from Six Bells Park on a pre-Christmas shopping trip to Hempstead valley.

It was a dry, sunny day enabling those who wished, to sit outside and soak up the sun's rays whilst others were shopping. Feedback indicated that this first adventure had been enjoyable.

The next adventure for the residents of Six Bells Park is a visit to the pantomime in January.



EST. Over 35yrs

**Extensions
General Building
Property Maintenance
Brickwork/Stonework Specialist
Landscaping**

Free Estimates



Chris@cgmbuildersltd.co.uk

www.cgmbuildersltd.co.uk

Need a 
**planning
application?**

Call 01233 861177
vernacularhomes.com

Badminton

Badminton has recommenced at the Memorial hall on Thursday evenings from 8 - 10 pm and ideally we are looking for one of two additional players, experience not a problem! Please come along and see

Contact - John, 07761 431416



Woodchurch HUB now has over
1,000 Facebook followers





At our November 1st meeting in the Memorial Hall we welcomed three members of the Woodchurch Ancestry Group who came to give us short presentations on aspects of Woodchurch history. Firstly, Josie Mackie gave a talk entitled 'Crime and Punishment and the

Whipping of Ann Brisley'. (yes, in Woodchurch). Ann Brisley was a resident of this village from 1668 until her death. Josie described how on two occasions Ann met soldiers who were to flog her two early children. She was 'punished' in 1695 for placing a financial burden upon the parish by a public whipping at a place in Woodchurch, probably near the present Bonny Cravat. She eventually married John Cook (the village thatcher) and had a further four children. She died at the young age of 40 years and was buried in our local churchyard.

Jon Chaplin was our second speaker and he talked of his 'Three Eureka Moments'. His first 'Eureka Moment' came when he obtained independent evidence (by dendrochronology) of the age of his Grade II listed house. His second and third 'moments' came during his researches into the Schreiber family who had come to reside in Hengherst. Some new insights into the personalities of William Schreiber and his son, John Charles Schreiber were revealed which helped Jon to better imagine their characters.

Finally, Gary Samson presented a talk on 'The Village Pump'. He started with the history of our pump (near the children's playground on the Green) and then went on to describe how Woodchurch lived for centuries with many individual pumps and ponds for water supply. It was the 'Great Stink' in London (1858) and a subsequent Act of Parliament that eventually resulted in the installation of a village pump in 1878. Gary went on to explain that mains water was at last delivered during the years from 1926 to 1930.

Our next meeting in the village hall will be on Monday December 6th during which society members will have an evening of quizzes to be followed by wine and Christmas nibbles. The first two quizzes will ask members to identify what's missing from a series of slides of Woodchurch and then of Kent. The third quiz will be more fact based and ask about Kentish history. It should be a fun evening.

We have a complete list of talks and speakers for next year. We are having our AGM on February 7th 2022 and our talks programme will commence from March.

We are always looking for new members and will be recruiting from February and March next year.

Thank you, Geoff (860393, if you would like more information).

[Woodchurch Carnival 2022 Update](#)

With two meetings completed now, the Carnival event is really starting to become real, this information will be updated as the organisation develops to keep you informed.

The date set for the Carnival is 4th June 2022 and we already have a number of individuals and groups taking part. If you would also like to be involved please contact us. Monies raised will be used to support local causes and organisations and to help fund future community events.

If you would like to register a float in the parade you can do this through the Website www.woodchurchcarnival.uk or visit the HUB Website and click on the [Carnival 22](#) tab.

The "floats" do not need to be a tractor or lorry. They could be:

- A walking individual or group
- A towed car trailer
- Other mobile floats including bicycles, mobility scooters...

If you are a community group/society or a commercial trader and would like to have a stand on the Green then please contact us for more information.

The Carnival is very much a village event and it needs your input. The next meeting is on 13th January, 6:30pm at the Pop-in. We will also be holding an open day on the 15th January at the School to showcase past village Carnival events. If you are skilled in marketing, event organising or are just happy to lend a hand, please contact us as we need your help.



[More information in the January 2022 Newsletter](#)

On a dank, dark evening in November Woodchurch W I met for only the third time this year in the Memorial Hall and, of course we are all crossing our fingers that we will be able to continue to meet on a regular basis from now on. In this mood of optimism, our Craft Group and our Lunch Club have started up again and next month we are due to meet on Friday, 10th December (12 noon for 12.30 pm) at The Bonny Cravat for our Christmas Lunch. The Group Carol Service is arranged for Tuesday 14th December at Greatstone at 2 pm and the next meeting is due to take place that evening at 7.15 pm in the Memorial Hall. It will be our Christmas Party with entertainment by the Ruby Sisterz, so don't forget to bring your Christmas spirit and also your wrapped "Secret Santa" (£5 or less) present with you.

The speaker for this month was to have been Mr. Howard Smith with his talk entitled "The Golden Age of Transatlantic Luxury Liners", but unfortunately he was unable to come. At extremely short notice, Mr. Jeffery Wagner and his wife agreed to stand in and they delighted us with their phantasmagorical slide show. It was set to appropriate music and inspired by the magic lantern system used in the past to seemingly effortlessly blend and meld the pictures into one another. Thus, we were transported away from an autumnal evening in Woodchurch to experience the Mardi Gras Carnival in Venice, with all the participants wearing inscrutable highly decorated masks. The bulb fields in Keukenhof near Haarlem in the Netherlands in the spring. The village where the Pilgrim Fathers first landed in America in 1620 and the New Hampshire colours in the trees in the Fall. However, the competition, which tied in with Mr. Smith's talk on luxurious liners, still stipulated an item of memorabilia from a cruise and this was won by Claire, with Amy and Christine taking 2nd and 3rd places.



Finally, a reminder that our Christmas Market will take place in the Memorial Hall and annex on Saturday, 4th December between 2 and 4 pm. Stalls will include Tombola, Bric a Brac, Cakes & Preserves, Books, Hand made greeting cards and many more. Hope to see you there!

Tai Chi and Qigong Taster

There will be a taster Tai Chi class in the S&G Community Centre on Monday 13th December at 12pm. Booking is essential as places are limited. The cost will be £6.

All Tai Chi classes will return from the 10th January 2022,

For more information visit

www.taichiforyou.co.uk

or contact Emma on 07587 167756



Tai Chi For You

WI Christmas Market at The Memorial Hall and Annexe Saturday 4th December 2:00-4:00pm



Stalls will include Tombola, bric-a-brac, home-made cakes and preserves, books, vintage jewellery and clothing, hand-made cards, miniature bears and houses, Christmas gifts and decorations, cushions, aprons and advent calendars, and more.
Refreshments will be served.





**ALL SAINTS
PARISH CHURCH**

CHRISTMAS CELEBRATION

Bethersden Road, Woodchurch, TN26 3QJ

Friday 17th December 4pm til 7pm

Enjoy our Church decorated for Christmas
with Christmas Trees
Twinkling Lights
Christmas Flower Arrangements
Angels made by villagers

Come and join us for some mulled wine,
or non alcoholic mulled juice
and Mince Pies

Music played by our
Church Organist

Carols round outside tree
at 6 pm



Ashford Astronomical Society

Our last meeting of 2021 is on Friday 17th December and it is the **Ashford Astronomical Society Christmas Quiz**.

It will be held at the Woodchurch Memorial Hall, 7.30pm. All welcome, entry is free and there are prizes to be won!

Woodchurch Players

The Players are so pleased to be back rehearsing again and our first production is of course pantomime 'The adventures of Robin Hood' on stage in January. Tickets are on sale, (on-line and through The HUB) and the dates of the performances are set out below. Emma Priest our director, tells me that rehearsals are going well, lines, music and songs are being learned - from a cast consisting of regular Woodchurch panto players and newcomers to the group.



Dates of Pantomime performances in January 2022:-

- Friday 14th at 7.30pm (a special childrens' performance)
- Saturday 15th at 2.30pm and 7.30pm
- Sunday 16th at 2.30pm
- Friday 21st at 7.30pm
- Saturday 22nd at 2.30pm and 7.30pm

Tickets cost £10 adult and £8 for children.

Other productions planned for 2022

In February we welcome a visit from 'Out of a Suitcase' travelling drama group for two performances of Yasmina Reza's very funny play (described as a philosophical comedy) 'God of Carnage'.

Two performances in Woodchurch on Saturday 12th and Friday 18th of February.



Calling all local businesses

Over the past two years the Community Newsletter has increased in size from 2 ½ pages, through 4 and 8 pages, and now stands at 12 pages each month. Its circulation within the village has also risen from approximately 500 to **now over 850 houses each month free of charge**. The increase in popularity of the Newsletter has also led to an increase in its production costs.



As a local business you could take advantage of the advertising potential of the Newsletter's extensive circulation within the Woodchurch area, whilst helping to support its monthly production costs.

Advertising costs start from as little as £10 per month. For more information contact The HUB or visit the HUB website.

ThreadsandTeak

Hi all - I am Jemima and I live in Woodchurch. I work from home in my studio sewing commissions made through my online shop on Etsy and for locals.



If you have any sewing needs then please do let me know. I can do alterations, remakes and custom orders.

Why not check out my shop and see my work.

www.etsy.com/uk/shop/ThreadsandTeak

Call me today and enquire 07864 975539

Village Lost Property at The HUB

If you find any lost property around the village please bring it to The HUB. We will hold it there waiting to be claimed for four months. For any valuable/important items that we have handed in, we will place notices online, in the Newsletter and on social media. If you have lost something around the Village please let The HUB know as it may have been handed in.



ARE YOUR EVENTS IN THE COMMUNITY CALENDAR?

Have you put your event dates in the Community Calendar? Although we are still early in the year we are already seeing clubs and society event clashes. Email your event dates to enquiries@woodchurchhub.uk to make sure they are included in the calendar.

Woodchurch Christmas Tree on The Green Lights 'switch-on' Sun 28th November

Winter was certainly upon us on Sunday for the Christmas lights switch on. Beforehand, the village came together to overcome the rain and cold to erect the tree ready for the big event. The big switch-on was cheered by a large crowd of well wrapped up villagers whilst enjoying glasses of mulled wine and listening to the children from the school singing carols.

A big thanks to Woodchurch in Bloom and The Big Thin Red Line for coordinating all these efforts and to Sarah and Richard George for donating the tree - which they had planted out in their front garden after one Christmas many years ago.

After some inclement weather last year (that resulted in the tree being blown over), the Parish Council invested in a more substantial tree stand for this year. With the addition of four large hurricane ground anchors and by extending the stand legs (courtesy of RJB Steel) this year the tree was not going anywhere! Despite this confidence, during the strong overnight winds of Saturday resulting from Storm Arwen, a dedicated member of the Parish Council kept a watchful eye on the tree until late into the night.

New festoon lights were also bought by a combination of crowd funding and the Parish Council for the tree this year. These are highly energy efficient, LED, multi-colour light strings that will be used to decorate the village trees in future years and also for other village events.



Woodchurch Meeting Point

1st Thursday of the month

10am – 12pm

Jean Mealham Pop-In Centre

9 Lower Road, Woodchurch

Would you like to see some friendly faces and have a chat together over **a cup of tea & a biscuit?**

Then do come along!



CARM Meeting Points are your local place to drop in, enjoy the occasional speaker, outings, games, and **make friends**. £1 voluntary contribution.

If you'd like more info, call **CARM** on **01233 758122**

We are a local Charity working to reduce social isolation and loneliness.
Registered charity no. 1184552 www.carmromneymarsh.org.uk



WOODCHURCH IN BLOOM
INCORPORATING
WOODCHURCH GARDENING SOCIETY

Christmas Tree on the Green, lights 'switch-on' event

So good to see so many people enjoying our 'switch-on' event on Sunday 28th November. Thank you to everyone involved in making it such a success including:

- Sarah & Richard George for donating the beautiful tree and switching on the lights
- Harvey Pilcher for transporting the tree and putting it up
- Nick Read for supplying the power for the tree lights
- George Bugden for donating the straw
- The Big Thin Red Line
- RJB Steel for help with the tree stand
- All the raffle prize givers
- All Stall holders and Morris men
- Tom Bromley for supplying the PA system
- The School children for singing carols
- Tina and choir members for leading carols
- Parish Council

Thank you too to everyone who bought raffle tickets - prize winners will be contacted over the next few days.

HAPPY CHRISTMAS FROM WOODCHURCH IN BLOOM!

Firstly, a very Happy Christmas to one and all, we would like to thank everyone who follows us and attends our events without you, we are nothing!

November closes another Remembrance over and as a veteran and on behalf of the team, of which many have served, it was particularly pleasing to see a great turn out on Remembrance Sunday. It was very nice to march up with the Scouts and other uniformed youth organisations, all looked very smart. Our own team gathered previous to this on the Friday for the formal Dinner which we have to thank Richard Carley for the use of the Pop-In centre.

As you may be aware the Thin in our name is because we are not really a large group and we spread ourselves Thin to get into the village and support. Our efforts this year brought that support to many in physical help and with donations.

We enjoyed November by supporting the Football Club with their sterling efforts with the senior's dinner and loved supporting the Blooms team with their great job with the tree light up, its really becoming an event and I am sure next year will be even better.

Our support with others will continue next year, our main effort will be more around raising money and we will be holding events to do this. Many of our team are focused to bring you the Carnival on the 4th June 2022, our normal Picnic on The Geen will be part of this and we really hope that all the village get behind this exciting venture.

www.woodchurchcarnival.uk

Part of the drive to get money for the venture includes raffling a fantastic Christmas cake, tickets can be sought at the Six Bells and Hub or through number below.

As ever we thank all groups and committees in the village for their efforts and also would encourage those interested to become part of our group to contact us. We are still accepting members please contact us on facebook or call me 07584 075 008 or via email Patrick7171@hotmail.co.uk

THE BIG THIN *Red line*



'Poetry for the Planet'

This year, our 'Winter Wonderland Walk' trail will be themed as 'Poetry for the Planet'

Our Village planters/planted areas have now had their winter refresh to brighten up the winter days and many will also be lit up again from 28th November to tie in with the Christmas Tree lights on the Green.

During December, we are inviting all villagers and visitors to write a short poem/phrase on sustainable material to summarise your commitment to help protect the planet. Please then place them on the Village Christmas Tree, or in one of the Village planters for all to enjoy!

A Big Thank you again to all our 'Planter adopters' for continuing to keep our planters looking so good.

The Mobile Library visits Woodchurch every Wednesday at the times and locations below

| | | |
|------------|-------------------|---------------|
| Woodchurch | Plum Tree Gardens | 11.20 - 11.50 |
| Woodchurch | Village Hall | 11.55 - 12.35 |
| Woodchurch | Shirkoak Park | 13.30 - 14.05 |

The library will **not** be out during Christmas week, that is from the 24th December to the 1st January

WoodchurchYardTogether ("WYT")

A big thank you to everyone who
has been part of
'WoodchurchYard Together' again
this year – the hard work, the
fun, the cakes and the friendships
have all benefitted so many!

THANK YOU!

2022 WYT weekends will
start in February – keep a
watch here for dates!

Keeping in Touch:

Email: Philippa.nick@btinternet.com

Phone: 07774 608281

Or follow us on Facebook



Search: 'WoodchurchYard Together'



Wealden Literary Festival

Planning for #WealdenLitFest 2022 is well underway and we already have some wonderful authors committing to appear. Make sure the weekend of 25-26 June is marked in your diary.

A New Year a New Start - Thinking of Volunteering?

Volunteer

Volunteering is a voluntary act of an individual or group freely giving time and labour for community service.

- Can you spare a few hours per week?
- Wish to help in your community?
- Be part of a friendly team?



We are very fortunate in Woodchurch that so much of the above happens, often unseen. There's always more to be done, people move on, volunteers have 'done their stint.'

The Hub is in need of a volunteer to be available on two Mondays in each month (mornings 10-1) and it is also in need of reserve volunteers for cover. No experience is needed, just a genuine interest in people and Woodchurch village.

At the moment the village also still needs a couple of **volunteer drivers** so that we can offer the meals delivery service to residents of Woodchurch, which is organised by Tenterden Hub. This is a much needed, sought after service which would only require a one and half hour commitment once a week.

Woodchurch Museum are looking for meeters and greeters in preparation for their 2022 season beginning next April. This would only require 3 hours commitment once a month.

Other clubs and societies are always looking for volunteers.

If you would like more information about these, and other volunteering opportunities in the village, please contact The HUB

enquiries@woodchurchhub.uk - 01233 861381



Support your local museum- you could win a £50/£30/£20 prize every month. An annual ticket costs £12 For more information please contact Joyce via The HUB - enquiries@woodchurchhub.uk or 01233 861381

November 2021 Draw Results

| | | | |
|-----------|-----|---------------------|-----|
| 1st prize | £50 | Alex Morrison | 820 |
| 2nd prize | £30 | Tony & Elaine Warne | 370 |
| 3rd prize | £20 | Ruby Gummer | 843 |

Woodchurch Museum

On Friday 19 November Museum volunteers attended an American Supper. Each couple (or single) brought a dish of food to be shared. It was a chance to put faces to names and have a good chat. A good night was had by all.

Although the season has ended, volunteers continue to work behind the scenes repairing, painting, gardening, and sorting. If you have time to spare and would like to come along, we are usually at the museum on Wednesdays from about 9:30. The museum will reopen on April 15 2022.

Supporting The HUB

The HUB is a not-for-profit organisation that exists to help support the residents of Woodchurch, the village clubs and societies and also village businesses. It is managed entirely by volunteers. The Newsletter is partially funded by advertising and the rest through fundraising and voluntary donations. If you would like to make a donation to help support The HUB then please go to The HUB web site and click the the "Donate" button. www.woodchurchhub.uk

Meal Delivery Service in Woodchurch Drivers Needed

Following the announcement in the October newsletter that the Tenterden Hub would be able to begin delivering hot food to Woodchurch residents in need, sufficient people have come forward to request the service. In order for it to commence we still need volunteer drivers who would be prepared to deliver the meals.

This would entail collecting the meals from Tenterden (ready to deliver and stored in insulated hot boxes) and deliver them to the residents in Woodchurch. This delivery will take approximately an hour. You would not be expected to deliver food every day and with sufficient volunteers this could be as little as once per week.

If you can spare the time to help with the meal delivery please contact The HUB for more information.

Tenterden Social HUB Meal Delivery Service

Once there are sufficient residents in Woodchurch registered for the service it will be very easy to use. They will deliver menus out to you every week so that you can choose your meals for the following week.

You can easily let them know your choices either by phoning them on the number at the top of the menu or by handing the completed menu to the delivery driver.

All meals are 2 courses and cost £7.50 per meal including delivery. Payment can be made on the day to the driver or you can be invoiced monthly for the service. Meals will be delivered between 12.15 - 1.30pm.



The meal will arrive HOT ready to eat.

To register an interest in either the meals service or becoming a volunteer driver please email enquiries@woodchurchhub.uk or phone 01233 861381.

Woodchurch Football Club



We would like to give a big thanks to Woodchurch Parish Council, The Big Thin Red Line and all those from around the village who helped with our seniors dinner in November. It was a great success with some fantastic feedback.



Our fixtures for December

- 4th - Woodchurch First v Smarden
Smeeth & Brabourne V Woodchurch Reserves
- 18th - Woodchurch Reserves v Sellindge
Bromley Green Reserves v Woodchurch firsts

We have our Dinner Dance on December 18th in the Memorial Hall from 7pm. £20 per head secures a two course meal with a disco by Johnny Quo. BYOB. We have a limited number of places remaining so if you are interested please contact Sunel Sargeant on 01233 860332 or 07462 008700

Then we break for Christmas

Football club lottery results for November

£100 - Tim Bourne who kindly donated his prize to the club

£50 - Karolyn Luker

£10 - Ryan Ford

We are delighted to announce "Double up December". The draw will take place on 22nd December when all prizes will be doubled for December. You can still join the lottery, there are 9 draws left, so to be included you can message the clubs Facebook page or email us at woodchurchfc@gmail.com

Santa Drop

We are delighted to announce that we have secured the services of the Big Man himself !!

For the small charge of £5 per address, Santa will deliver a present on your behalf to any address in Woodchurch on Christmas Day.

How it works : We will be at the Pavillion on the Green between 6pm and 8pm on 22nd and 23rd of December. You drop off your pre wrapped and tagged present to us (with the delivery address), enjoy a glass of mulled wine and rely on us to get Father Christmas to deliver to the address in Woodchurch on the 25th.

For more information contact Richard on 07825 785810



Grand Christmas Festivities

Sat. 18th and Sun 19th December
from 10am until late

Outside undercover Christmas Market
(contact Woodchurch Hub for a stall 01233 861381)

Christmas Organ Concerts from 2pm

6pm Singalong-outside by Candlelight

Father Christmas

Masses of bargains in the marquee

Refreshments all day, evening barbecue

Jean Mealham Pop-In Centre

Lower Road Woodchurch TN26 3SQ

07798 566849

Further details from Clive or Shirley

01233 860139

WOODCHURCH 
HUB
COMMUNITY INFORMATION CENTRE

MERRY
CHRISTMAS
and a Happy
new year

From everyone at
Woodchurch HUB