



# WOODCHURCH COMMUNITY NEWS

*The village community working together*

*October 2021*

Contact us: Telephone 01233 861381 Email [enquires@woodchurchhub.uk](mailto:enquires@woodchurchhub.uk) Web [www.woodchurchhub.uk](http://www.woodchurchhub.uk)

**OVER 800 COPIES distributed every month in the Woodchurch area**

## WOODCHURCH Community Calendar



### Weekly events:

#### Saturdays:

**Boot Camp** 9:00am-10:00am on the Village Green

#### Mondays:

**BodyTone** 6:15am - 7:00am at the Memorial Hall

**BodyFlex** 7:15am - 8:00am at the Memorial Hall

**Tai Chi and Qigong** 10:45am - 11:45pm at the Community Centre, Lower Road

**Knit and Natter** 2:00pm - 3:30pm in the Pop In Lodge

**Beavers** 6:00pm - 7:00pm in the Community Centre, Lower Road

**Scouts** 7:30pm - 9:00pm in the Community Centre, Lower Road

#### Tuesdays:

**Little Leaves Forest School** 10:00am - 12:00pm at Boldshaves Gardens

**Community Warden** 1:00pm - 3:00pm in the HUB

**Puzzle Club** 2:00pm - 4:00pm in the Pop In Lodge, Lower Road

**Cubs** 6:00pm - 7:00pm in the Community Centre, Lower Road

#### Wednesdays:

**Bootcamp** 6:15am - 7:00am at the Memorial Hall Annexe

**Pop-In** 2:00pm - 4:00pm Tea and coffee and boot fair marquee at the Jean Mealham Pop-In Centre

**Rainbows** 4:15pm - 5:30pm in the Community Centre, Lower Road

**Fish and Chips** 4:30pm - 7:30pm in the Village Car Park

**Brownies** 6:00pm - 7:20pm in the Community Centre, Lower Road

**Guides** 7:30pm - 9:00pm in the Community Centre, Lower Road

#### Thursdays:

**BodyFlex** 6:15am - 7:00am at the Memorial Hall

**BodyTone** 7:15am - 8:00am at the Memorial Hall

**Art Society** 10:00am - 1:00pm at the Memorial Hall

**CARM** 10:00am - 12:00pm in Jean Mealham Pop-In Centre

Previous editions of the Newsletter can be found on The HUB Web site  
[www.woodchurchhub.UK](http://www.woodchurchhub.UK)



### Thursdays continued:

**Explorers** 7:30pm - 9:30pm in the Community Centre, Lower Road

### Other Events:

Sat 2<sup>nd</sup> **Windmill Path Tidy Weekend** 10:00am at the footpath between the Bonny Cravat and Six Bells Pubs (Saturday and Sunday)

Sun 3<sup>rd</sup> **Morning Worship** 11am at All Saints Church  
**Classic Cars** 12:00 at the Bonny Cravat

Mon 4<sup>th</sup> **Woodchurch Local History Soc** - "Doing Your Bit". 7:30pm in the Memorial Hall.

Sun 10<sup>th</sup> **Holy Communion inc. Harvest Festival** 11:00 at All Saints Church

Tue 12<sup>th</sup> **PCSO available at The HUB** 1:00pm to 3:00pm at The HUB

**W.I.** 7:15pm to 9:15pm in the Memorial Hall

Sat 16<sup>th</sup> **Boldshaves Gardens closes for the season**

Sun 17<sup>th</sup> **Morning Worship** 11:00am All Saints Church

Sun 24<sup>th</sup> **Holy Communion** 11:00am All Saints Church

Thu 28<sup>th</sup> **Woodchurch Parish Council Meeting** 7:00pm - 9:00pm in the Memorial Hall Annexe

Fri 29<sup>th</sup> **Scrabble** 2:00pm - 4:00pm at the Pop-In Centre  
**Ashford Astronomical Society - "Science Fiction to Science Fact"** 7:30pm to 9:30pm in the Memorial Hall

### Meet our Community Warden and PCSO

Our Community Warden in Woodchurch is **Kathy Carter** and she is available in The HUB each Tuesday afternoon from 1 to 3 to meet with local residents and answer any community questions. Kathy is the KCC representative for our community.



**Kate Richards** is our Police Community Support Officer (PCSO) and she is available once a month on a Tuesday from 1 to 3 in The HUB (see above for the October date).



No appointments are needed. If you have any questions for either of them please come along.

# WOODCHURCH SURGERY UPDATE

## Flu/Covid/News

We started the first of our flu clinics on Saturday 18th which was a great success and another is planned for next weekend. We placed our order a year ago and, despite a 22% uplift in our order from pre-pandemic, we are tight on the over 65 vaccines so we have to impose a brief "hold" on booking any more of this age group but are taking details.

The uptake of flu has been huge and, while the numbers affected are fortunately very small, we are doing what we can to make sure everyone can have a vaccine locally. Plan A is to see if there is excess stock within the PCN and Plan B would be to offer the "under 65" vaccine which is licenced for use in older people but is perhaps less preferable. For the few that are in "holding" please bear with us for a week or two while we try to resolve this or use one of the providing chemists.

The under 65 age group is a bit slower at coming forward and we welcome all those between 50 and 60, or those with a long-term condition to phone up and book in for a vaccine. To incentivise you we may be offering a free sticker or lolly (subject to availability).

The bigger news must be the Covid Boosters. We feel like we are being dangled on a bit of string at the moment and are still not clear on how the boosters can be stored or moved which will have a huge impact on us delivering them. We hope that this will all be resolved by Tuesday 28th.

On 20th September I received an email announcing that the Central Booking Service would be going live from midday. By about 5 past we were already getting calls from people wanting to book in their vaccine booster. Please follow the links you are given and book your booster and get on with it rather than waiting for us - as soon as we can give them we will put out the flags.

I must say I wasn't expecting this Central Booking Service to be up and running so it took me a little by surprise. I think they are contacting people based on the timing of their 2nd jab (ie over 6 months ago) rather than by risk. Phase 1 was very much about eldest and shielding first and it seems that isn't a priority for the booster which goes against the targets we have been asked to work to. I'm sure this will be ironed out this week for our delivery plan. There is consistency that the 12-15 year old jabs will be given by the school vaccination program and not us.

More within our control is news of our growing staff. Eileen, our new Clinical Pharmacist, has started and will help with our medicines management. This is quite topical as the media reported last week that 10% of medication is over-prescribed nationally. This is pretty well-known so I don't really know why they have dragged it up this week but they haven't reported if 10% under-prescribing is a better idea. We have been trying to develop a culture of regular

medication reviews and the concept of planning to de-prescribe at the moment of prescribing. As always, we want people to question what they are prescribed and welcome any calls.

We have also celebrated Sarah's arrival to the PCN team. She is a Paramedic Practitioner with huge experience and will be involved in some home visiting for acute illness but also in trying to reduce hospital admissions and provide alternatives to calling for an ambulance.

Sarah's arrival was matched with the departure of our Trainee, Seema Chakravarti, who has completed her training. She was very sad to leave but I am pleased that she has been retained locally and she is now packing her flat in Canary Wharf, moving to Ashford, and will start as a salaried GP in Wye. We wish her all the best and I'm sure will make a positive impact there.

Talk of the Surgery entering a team for the forthcoming Woodchurch 5 mile run has gone very quiet of late. If we do get our act together and you see us then please feel free to offer some encouragement - we will be near the back looking as if we need a Paramedic Practitioner...

Best wishes on behalf of the team at Woodchurch Surgery - Jack Hickey, GP.

## Boldshaves Gardens

The gardens (and Tea House) at Boldshaves will remain open daily from 2-6pm for another month, and will close for the season on Saturday 16 October, re-opening in March 2022. For further details and for information about other events at Boldshaves, please visit our website: [www.boldshaves.co.uk](http://www.boldshaves.co.uk).



**Try our professional  
Home News  
Delivery service**

**New customer introductory  
offers available**

**Have your paper delivered before you go to work and  
read it with your breakfast!**

- ✓ Early delivery - before 6.30am (7.30am at weekends)
- ✓ Excellent communication - phone or email ALWAYS responded to
- ✓ Different billing options available
- ✓ All national and local newspapers available to order
- ✓ All magazines available to order
- ✓ Well established reliable company with over 4,400 customers

**Place your order today by telephone on  
01580 763183**

or email us at [mail@jackiesnews.co.uk](mailto:mail@jackiesnews.co.uk)  
or go to [www.jackiesnews.co.uk/place-your-order](http://www.jackiesnews.co.uk/place-your-order)





Our first society meeting in the Memorial Hall since the lockdown occurred on Monday September 6th when members heard the story of Pam's grandfather, Frank Smith, who, together with his business partner Jack Milroy, built the Orpington car in the 1920's for general sale. Pam and the Orpington car are pictured. Later, in the early 1950's, Frank and his family moved into Brickwall Farm on Susan's Hill. It was gratifying that members of the Smith and Milroy families were in the audience.



Monday October 4th meeting, 7:30pm. We have invited Steve Hookins to come, dressed in character as a WW2 Home Front volunteer, to present his 'Doing Our Bit' performance. Steve (pictured) is well known for producing lively and humorous 'acts' so this evening should be very entertaining. Please come.



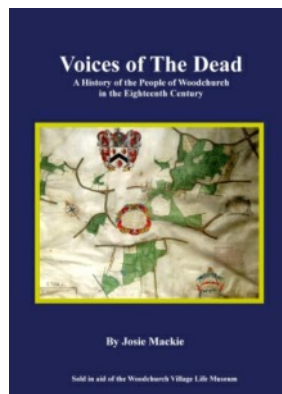
Monday November 1st meeting, 7:30pm. We are very pleased to welcome three members of the Woodchurch Ancestry Group to our society who will each make a 20 minute presentation on an aspect of Woodchurch history. These sessions featuring 'snippets' of Woodchurch history have always been very popular in the past so if you're interested in village history then please come along. Our speakers are Josie Mackie, Jon Chaplin and Gary Samson.

As you have probably aware, the Woodchurch Local History Society generally meets on the first Monday of the month in the Memorial Hall at 7:30pm. New members are very welcome (paying £10 annually) and we are also pleased to see visitors who pay £3 at the door.

For more information contact Geoff Turner, 860393.

### Woodchurch Ancestry Group "Voices Of The Dead"

Recently reprinted is Josie Mackie's excellent publication - "**Voices of the Dead**" in which she cleverly constructs an engaging and highly readable history of Woodchurch village in the 18th century using the wills of people living at the time. As with **Leaving Woodchurch** and **Then & Now**, Voices of the Dead is available from the Woodchurch Village Life Museum and the Woodchurch Hub for just £9. Copies are also available online from the Woodchurch Ancestry Group website.



[www.woodchurchangestry.org.uk](http://www.woodchurchangestry.org.uk)



Support your local museum- you could win a £50/£30/£20 prize every month. An annual ticket costs £12 For more information please contact Joyce via The HUB - [enquiries@woodchurchhub.uk](mailto:enquiries@woodchurchhub.uk) or 01233 861381

1st prize	£50	Richard George	821
2nd prize	£30	Jenny Styles	149
3rd prize	£20	Brian Smith	665

**Need a**   
**planning**  
**application?**  
**Call 01233 861177**  
**[vernacularhomes.com](http://vernacularhomes.com)**

### Windmill path Clear up weekend Saturday 2nd and Sunday 3rd October

On behalf of the Village, Woodchurch in Bloom are organising a Windmill Path clear-up weekend with the support of the Parish Council. As you may be aware, the path is now very overgrown and is a popular walking route, so we are keen to work together to make a difference.

If you are able to help, please turn up at the bottom end of the path from 10am.

### Six Bells Park Residents Association

At the recent Annual General Meeting of the Six Bells Park Residents' Association it was agreed, unanimously, that the association would purchase a defibrillator to be sited at the entrance to the park for the use of anyone who might have need of it. Some of the money raised from the recent bike ride will be used towards this.

On a different note, we are please to announce that two of our residents will be celebrating their 70th wedding anniversary on October 13th and we would like to wish them a very Happy Anniversary and hope that they have many more to come.



Woodchurch HUB now has over 1,000 Facebook followers





## WOODCHURCH PARISH COUNCIL • **UPDATE** •

This month the Parish council has been looking forward to 2022, and has started to discuss the weekend of the Queen's Platinum Jubilee which will take place from 2nd-5th June 2022. If there are any members of the community or any clubs or societies who wish to plan something to mark this occasion, please do get in touch with the Parish Council. We would like to support the community in organising something and would be keen to know if there is scope to create a joint working group of those who wish to do the same.

The Parish Council has also agreed to add a handrail to the steps down from the pavement to the Green in order to make this safer and accessible for residents. If there are any local tradespeople in the village who would like to come forward and offer their services to do this, please do get in touch- we are currently collecting quotes for this work.

On Saturday 2nd and Sunday 3rd October, Winbloom are holding a Windmill Path Tidy event with support from the Parish Council. We feel this project is important as it will improve accessibility for those wishing to visit the windmill as well as walkers accessing public rights of way that feed off this path. It will also ensure a safe route for walkers and divert them away from the Bethersden Road. If you are able to help with this project and wish to get involved, please get in touch with the Parish Council or simply turn up on the day!

Also this month, Nice Work race management have organised a Woodchurch Run to raise funds for the school. If you would like to get involved and support this event, please contact Ben Hebblethwaite at Nice Work- 01797 229955 or contact the Woodchurch Hub who will be able to pass your details on - [enquiries@woodchurchhub.uk](mailto:enquiries@woodchurchhub.uk) Please be aware that this is happening on Sunday 24th October and will involve some road closures in the centre of the village and may impact on central resident's access.

Finally, one of our Councillors, Eleanor Jones, has arranged to meet with KCC Councillor David Robey to give him a tour of the village and discuss some of the issues that the community experiences regarding the Highways. This will include highlighting the issues of the bus stop near the surgery, the potholes, speeding and the issue of parking around the school at busy times. If you have any concerns or specific highway 'hot spots', please do get in touch with us. We will try to cover as many concerns as possible, but if there are specific areas where lots of residents are experiencing the same problems then this would be something we could bring to his attention. This would then feed into the Highway Improvement plan that Eleanor is taking the lead for the Parish Council.

With this in mind, we wish to remind all parents of the

school to please, whenever possible, use the car parks available for the school run and walk from there. The Bonny Cravat team have very kindly agreed that for the morning drop off parents are able to use their car park, and the village car park is available for parents to use for the collection time.

All residents are reminded to please drive carefully in the village, and particularly at busy times such as drop offs and collections from school.

As ever, if you wish to contact us about anything in this update, or anything else, the contact details are below.

### [How to contact your Parish Council](#)

**In person:** By talking to one of your councillors - details on [the Parish Council Web site](#)

**By email:** [clerk@woodchurch-pc.gov.uk](mailto:clerk@woodchurch-pc.gov.uk)

**By phone:** 01233 733994

**Through The HUB:** Place your correspondence in a sealed envelope marked "Parish Council" and deliver to The HUB

**By post to:** Woodchurch Parish Clerk

Keg Barn, Hornash Lane, Shadoxhurst, Kent, TN26 1HX

**Through the contact form on the Parish Council Web site:**  
[www.woodchurchhub.uk/parish-council/](http://www.woodchurchhub.uk/parish-council/)

Parish Council meeting dates, agendas and minutes can be found at [www.woodchurchhub.uk/parish-council/](http://www.woodchurchhub.uk/parish-council/)

### [Know your councillor](#)

#### **Lucy Bramley - Parish Council Chair**

While I am relatively new to the Parish Council, having joined in September 2020, I have lived in the village for most of the last 35 years.

Growing up here has been a privilege and a pleasure, and I joined the Parish council to help with keeping the village a lovely place to live. I am passionate about ensuring that the village facilities are maintained and protected, and I think we are really lucky to have so many great businesses on our doorstep to enjoy as well.

I work from home and my son attends the local school, so you are most likely to see me in the village on the school run or the park, or else walking the dog. You may sometimes be able to spot me on The Green for bootcamp as well...

I became the Chair of the Parish Council in May 2021 and since then we have been able to meet in person again rather than on Zoom calls. I enjoy meeting the members of the community who attend our meetings, and working with my fellow councillors to support the village and keep it as such a special place.





On 14 September in the Memorial Hall, Woodchurch WI was pleased to be able to hold its first official meeting in eighteen months. Despite the long gap, after thoroughly sanitising tables, chairs, etc etc, committee members effortlessly resumed their usual tasks - there was Sheila signing members in at the door, Catherine manning the raffle and trading table, Liz organising teas and coffees, Josie meeting and greeting those arriving and Sandra sorting out competition entries. Our President, Lynn, was busy co-ordinating everything whilst Joy expertly oversaw the whole proceedings.

We were delighted to have a very good turn out of enthusiastic and cheery ladies plus two new visitors. Our speaker for the evening was Anna Astin with her talk entitled "Jolly Hockey Sticks! - the enduring appeal of girls boarding school stories". With the help of colourful slides, Anna took us from the very early days of classic books featuring girls' boarding schools - Charlotte Bronte's "Jane Eyre", Thackeray's "Vanity Fair", Jane Austen's "Persuasion" and the perhaps lesser known "A Little Princess" written in 1905 by Frances Hodgson Burnett, right up to the present day with the Harry Potter stories. In a very entertaining talk Anna explained how every story about boarding schools has the same core theme running through it - the quiet, somewhat shy protagonist as in Harry Potter, the bully (Draco Malfoy), the outgoing, optimistic, good looking and cheerful best friend (Hermione Grainger) and always the 'good guys' winning through in the end.

The Competition table was awash with memorabilia from members' childhood school days with the winning entry from Sheila who had brought along several items including her letter from George V1 which was sent to all schoolchildren after the war.



Our next meeting will be on Tuesday, 12 October when we will have our Annual Meeting to vote in the next committee. We have no speaker at this meeting but we will be having a Clothes and Jewellery "Swish" where members can bring along items they wish to give away. In the meantime members were happy to finally be able to fill their diaries with forthcoming WI events, one of which will be Woodchurch WI's Christmas Market which will be held on Saturday 4th December 2-4pm in the Memorial Hall and annex. To book a stall for £10 please call Joy Rubie on 01233-861483 or email Josie on josie.mackie@btinternet.com.

## Parish Council Vacancies


The Parish Council currently has a vacancy. If you are dynamic, have a passion about the village and would like to help shape the future of the Woodchurch community please contact us. You must be over 18 years of age, an elector and live in the parish of Woodchurch or within 3 miles from it. Please leave your application in a sealed envelope at The HUB or apply online here [www.woodchurchhub.uk/parish-council/parish-council-vacancy/](http://www.woodchurchhub.uk/parish-council/parish-council-vacancy/). **You CAN make a difference.**



**Windmill path Clear up weekend** – Saturday 2nd and Sunday 3rd October

**Pumpkin Challenge** – Week commencing 25th October  
To brighten up our Autumn days, we invite you to join our Pumpkin Challenge by either:

- Planting a pretty 'blooming' pumpkin planter or
- Carving a creative 'il loomin ated' pumpkin!

Place your pumpkin(s) by your front door any time during w/c 25th October for everyone to enjoy and on 31st October we'll be walking around the Village to take plenty of photos and deciding on a few winners! So will yours be 'blooming' or 'lumin'?! 

**Wildflower Meadow planting out** – Sunday 31st October 11am to 1pm

The meadow was cut on Sept 8th and bales removed. We are about to lay tarpaulins over the areas to be improved for planting and seeding with wildflowers later this autumn.

Additionally, with the assistance of the Bumblebee Conservation Trust, the Rare Breeds Centre has provided us with green hay which is full of wildflower seeds from their wildflower meadow. This will be added to our meadow with additional yellow rattle seeds.

Following on from the success of volunteers planting out seedlings last May, we invite you to join us planting out more seedlings on Sunday 31st October between 11am and 1pm. Please contact us if you would be interested in planting out the seedlings in October.

[woodchurchinbloom@hotmail.com](mailto:woodchurchinbloom@hotmail.com)

Linda: 07795 383945 - Philippa: 07774 608281

# Simple Kent Funerals

Relaxed, flexible, imaginative, economical, caring

Applefield Cottage, Redbrook Street, Woodchurch TN26 3QS

Call Toby on 07806 613297 • [www.simplekentfunerals.co.uk](http://www.simplekentfunerals.co.uk)

We work in an eco-friendly and environmentally-sustainable way and are certified as a net carbon neutral business



# All Saints Church



I'm not much one for Hallow'een but did you know that the word stems from All Hallows' Eve? This is the night before All Hallows Day which begins All Hallowstide. This is the moment in the year that Christians remember the dead whether they be Saints, Martyrs or "people we love but see no longer", the faithful departed. I understand we have a Bereavement Service in December in which this commemoration takes place.



But before we get to this, we have Harvest Services. Being a former rural Vicar I would welcome parishioners and especially our farming community into church. A plough was blessed and we sang the Harvest favourites, especially 'We plough the fields and scatter'. We are looking forward to welcoming the schoolchildren from our three Parishes into our Churches this year to celebrate our farming community, and learn all about Harvest and what it means. We will be offering Harvest Services for all of our community on Harvest Sunday as well.

One of the many joys of living in Kent for Rev'd Sue and I is the amazing countryside, the animals, fields and hills. We count ourselves blessed to be here in so many ways.

Please hold our farming community in your prayers, as we give thanks to God for their hard work which enables us to be sustained and refreshed, and fed.

Happy Harvest.

Rev'd Mike

## Rare Breeds Centre

Summer has kicked off at the Rare Centre. We are open 7 days a week with 100 acres to explore. Book online in advance to attend.



We have not opened our indoor café yet as we want to keep people extra safe, but we do have an incredible takeaway menu to try.

**10% off meals  
for Woodchurch Village Residents**

**\*\* Restrictions apply—see below**

**\*\* If you bring this newsletter with you to the Patio Café - we will give Woodchurch Residents 10% off their meals in exchange. This can only be used once per resident (Offer valid until 1<sup>st</sup> November).**

## Surgery Opening Hours

Monday to Friday 9am to 5pm



## Where to find us...

Hamstreet Dental Clinic  
Warehorne Road  
Hamstreet  
Kent TN26 2JJ

Find us on facebook



**Tel: 01233 733848**

Email: [hamstreetdentalclinic@gmail.com](mailto:hamstreetdentalclinic@gmail.com)



EST. Over 35yrs

**Extensions  
General Building  
Property Maintenance  
Brickwork/Stonework Specialist  
Landscaping**

**Free Estimates**



**Chris@cgmbuildersltd.co.uk**

**[www.cgmbuildersltd.co.uk](http://www.cgmbuildersltd.co.uk)**



### Woodchurch Players

The Woodchurch Players are looking for any adults or children over 10 years who would like to join our chorus in our pantomime 'The adventures of Robin Hood'. They would be involved in several songs and dances and we need chorus to be school children and Brownies. We rehearse Tuesday and Wednesday nights, with several Sunday afternoons as well and 7 performances over 2 weekends in the middle of January.



If you are interested contact Emma Priest on 07500 660 950

### Live-in Housekeeper/Companion in Woodchurch

A competent, friendly mature lady is seeking a position as a live-in housekeeper and companion in the Woodchurch area in return for free board and lodging. References available.

If you can help, please contact The HUB for more information enquiries@woodchurchhub.uk, 01233 861381

### Little Leaves Forest School Parent and Toddler Group

The Little Leaves Forest School - parent and toddler group is now running every Tuesday in the beautiful setting of Boldshaves Estate from 10am until 12.

For more information or to book a place please email Helen de Georgio at [righteousoaks@hotmail.com](mailto:righteousoaks@hotmail.com)

or contact Boldshaves on 01233 860302

### WOODCHURCH GUIDING UNITS FOR GIRLS AGED 5YRS AND OVER

We meet on Wednesdays at the Scout and Guide Community centre Lower road Woodchurch.

We are now back face to face [following covid risk assessments] and ready to welcome you to an all-girl organisation where girls can feel free to be themselves and try out lots of new activities, meet new friends, but best of all have lots of fun and adventures.



have already returned, term time only, 4.45-5.45 on Wednesday evenings, we have spaces for girls aged 5-7 years.

Contact Vicky 07751 358842 for more information.



meet 6pm till 7.20pm - ages 7 to 10  
Contact Sky 07908 823716



meet 7.30 pm till 9pm ages 10 to 14  
Contact Tracy 07511 422735

[flexible collection time for younger girls] We start back on 3rd November for our 60th year of continuous running in Woodchurch

**LADIES** We are always short of adult leaders if you would like to join and help today's young girls /women (especially if you have been a brownie or guide in the past) why not come back and join us.

**For an informal chat ring Fran on 07740 478694  
or Tracy on 07511 422735**

We held our monthly event on the 25th September and made this an open invite for others to join us for Music Bingo, great night had by all, thanks to Jonny Quo for making the evening so good and thanks to all those who attended.

This year on November 14th at the Remembrance parade the British legion colours will be laid to rest, a historic time for the village as it has had a legion heritage link going back many years. As ever we would like to encourage support for this day and further details will be announced in October. To mark this, we will be holding "The Last Super dinner" on the 12th November if any Veteran from the Tri Services (ARMY/NAVY/AIRFORCE) would like to attend could you let us know please!

Our ears are always out there listening to the vibes on the ground and we heard rumbles of many that did not see the Lions float last Christmas, we spoke to the big mans PA Elf and have managed to get a special visit from Father Christmas just for our village, again we will confirm all the details but keep an eye out for details on our facebook page and other village news links.

We have been growing stronger each year with 2022 being our Fifth birthday, to mark this period, we would like our final note for the month to throw out an invite to all that may be interested in raising the **Woodchurch Carnival in 2022**.

If any club or person is interested we will hold a meeting on October 21st location TBC, to discuss the possibility and outline of this!

As ever we thank all groups and committees in the village for their efforts and also would encourage those interested to become part of our group to contact us.

We are still accepting members please contact us on facebook or call me 07584 075 008 or via email Patrick7171@hotmail.co.uk

**THE BIG THIN**  
*Red line*

**CARM Woodchurch** Meeting Point has reopened at long last with a new day to meet, a new venue, and a few new faces. We are a local Charity working to reduce social isolation and loneliness.

Margaret Oliver has been the Lead volunteer at Woodchurch Meeting Point since its doors first opened 16 years ago. At 90 years old, she has decided to step back from the role and is now looking forward to attending Meeting Points as a member with absolutely nothing to do other than drink a cup of tea and have a chat! On behalf of CARM and Woodchurch Meeting Point, I would like to extend a heartfelt thank you to Margaret for all her years of volunteering.

Fiona Lock has kindly stepped in to offer her time and energy as Lead, and Barbara Lunn is well able to show her the ropes, having been the Meeting Point Treasurer for a decade. Lorraine, Des and Tricia circulate with tea and biscuits and company, making sure no one is left with an empty cup or without someone to talk to. The Meeting Point wouldn't exist without these wonderful volunteers - or its local Woodchurch members!

So do come along. We would love to welcome you in, make you a hot drink and have a natter. As well as refreshments, we organise the occasional speaker, events and quizzes, all for a voluntary contribution of £1.

If you would like more information, just call CARM on 01233 758122, [www.carmromneymarsh.org.uk](http://www.carmromneymarsh.org.uk)



## Woodchurch Meeting Point

**1<sup>st</sup> Thursday of the month**

**10am – 12pm**

**Jean Mealham Pop-In Centre**

**29 Lower Road, Woodchurch**

Would you like to see some friendly faces and have a chat together over **a cup of tea & a biscuit?**

Then do come along!



**CARM** Meeting Points are your local place to drop in, enjoy the occasional speaker, outings, games, and **make friends**. £1 voluntary contribution.

If you'd like more info, call **CARM** on **01233 758122**

We are a local Charity working to reduce social isolation and loneliness.  
Registered charity no. 1184552 [www.carmromneymarsh.org.uk](http://www.carmromneymarsh.org.uk)

### **'WoodchurchYard Together'**

#### **WYT Funds**

Thank you very much to all those who kindly donated following our appeal for mower funds. We are pleased to confirm that we now have 40% of costs needed for replacement & purchasing additional mowers and electric trimmers. The balance currently has been generously loaned by volunteers. For obvious reason, particularly with workload this year with it being so wet, it meant we needed to purchase the equipment earlier in the year.

Just a reminder that we rely solely on kind donations to enable us as volunteers to fund the tidying of our

*WoodchurchYardTogether ("WYT")*

*Our next volunteer gardening weekend in the Churchyard is:*

**30<sup>th</sup> & 31<sup>st</sup>**

**October**

Churchyard (petrol/trimmer cord/oil) therefore, all donations are much appreciated for our ongoing costs and currently towards equipment too.

Please contact Philippa Jones for details on how to donate or come and find one of us at our WYT volunteer weekends.



#### **Winter Social fundraiser**

We are pleased to announce that on the Sunday of our November WYT volunteer weekend (28th November), we will be organising a fundraising winter social event during the afternoon. More details will follow in next months update.

#### **Churchyard Management Plan**

With growing numbers of volunteers helping each month (we still need more!), we are developing a Churchyard Management Plan, working closely with Reverend Sue Rose. This will aim to optimise volunteer time on our WYT monthly weekends within the reality of resources available (number of volunteers and tools), with our priority in keeping our Churchyard tidy and keeping graves accessible, as well as respecting the abundant wildlife. Please see further details in Reverend Sue's Parish notes.

Philippa: 07774 608281  
Email: [philippa.nick@btinternet.com](mailto:philippa.nick@btinternet.com)



## Woodchurch 10&5 Mile Run



The Woodchurch 10&5 mile running event this year is being held on the morning of Sunday 24th October. The event includes a Childrens' 1 mile run round The Green: 4 x 400m laps; a vibrant village event with refreshments and the buzz of the race registration tent, baggage holding area, the start and finishing lines. The Scouts will be on duty at water stations and handing out the finishers' medals.

We welcome any other community groups to get involved to help raise funds for their own causes. So please do contact Ben Hebblethwaite (07967 817 327) if you'd like to set up a stall on The Green or get involved in other ways such as marshalling. A well populated team of marshals is essential for the success and smooth running of the event and it's a surprisingly very rewarding experience to take part in.

The adults (or 14yr olds and over) can enter the 5 mile or the two lapped course of the 10 mile. Starting near Place Lane on The Green, the course takes runners down Lower Road, round the entire kite shape of the village, then off to Susan's Hill out past the Woodchurch Vineyard and back round to the village via Boldshaves and Redbrook Street to finish on The Green. A single road closure from the crossroads of Redbrook St / Bethersden Road all the way down through the village on Front Road to the junction with Lower Road. The closure is just for the Sunday morning, with the bulk of the race lasting two hours. For those that need access via the closed road, a little planning ahead, will minimise any inconvenience. The race starts at 9:30am and the last runner is done by 12pm.

Prizes galore at this event! Bespoke medals all round and a bottle of wine from Woodchurch Vineyard for those that prove to be the fastest Man or Woman in the 10 and 5 mile races. This year the medal is the result of the winning design of the competition entered by every year group of the village school.

For full details of the Woodchurch 10&5 mile:

[www.nice-work.org.uk](http://www.nice-work.org.uk)



## Ashford Astronomical Society

**"Science Fiction to Science Fact" by Aimee Babbs**

Friday October 29<sup>th</sup> in the Memorial Hall 7:30pm

Entry is free to AAS members or £2 on the door for non-members.

## Woodchurch 5&10K Run

The Woodchurch Run event is looking for LOTS of volunteers to bake and donate their creations to be sold on the day and all proceeds to go to the village school.

Cake makers, bakers & sweet creators alike  
- WE NEED YOUR HELP -

Please bring delicious vibrant flavoursome bites and slices : flapjacks, cupcakes, sweetness & delights to be sold from our community stall on the day.

Please contact me if you can and would like to host this community stall. Any Parents / Governors of the village school, would be ideal.

Ben Hebblethwaite (07967 817 327)

## Items For Future Newsletters

The purpose of the Woodchurch Community Newsletter is to inform the residents of Woodchurch what is happening around our village. We are keen to share as much information as we can. If there is something that you would like to have included in future editions then please send them to:

[enquiries@woodchurchhub.uk](mailto:enquiries@woodchurchhub.uk)

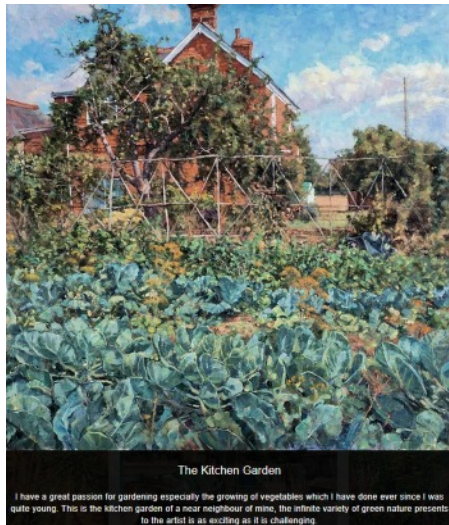
- |                      |                        |
|----------------------|------------------------|
| * forthcoming events | * club/society reports |
| * announcements      | * interesting facts    |
| * memorials          | * photos               |
| * adverts            | * etc. etc. etc.       |

**We can now scan, print, copy and laminate  
A3 pages and can print booklets at The HUB.**

Photocopies (per side)	A4 b/w - 10p, A4 colour - 15p
	A3 b/w - 15p, A4 colour - 20p
Laminating (per sheet)	A4 - 15p, A3 - 25p

## [Rowan Crew - exhibition of his art 13<sup>th</sup> and 14<sup>th</sup> November in the Memorial Hall](#)

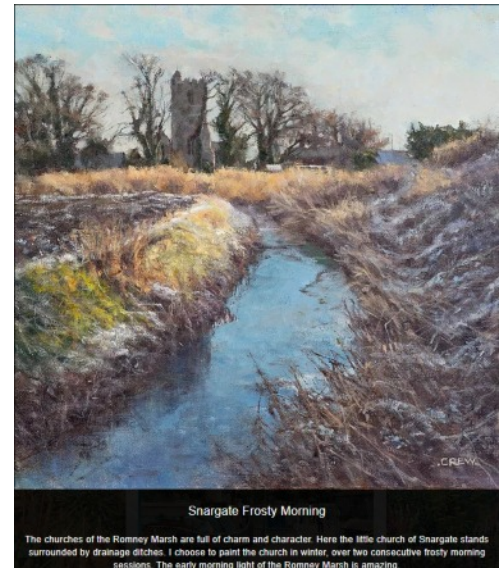
Rowan Crew is an acclaimed artist who was born in Woodchurch in 1952 and who started exhibiting work in London in 1979, when all of his work was selected for the Britain in Watercolour Exhibition held at the Mall Galleries. In 1987 Rowan was elected a member of the Royal Society of British Artists and he is now a Senior member of the society. He has exhibited widely in both group and solo exhibitions, and his work is now held in public and private collections.



The exhibition will be held on the 13<sup>th</sup> and 14<sup>th</sup> of November (Saturday & Sunday) in the Memorial Hall from 10am to 5pm on both days

Most of the work will be for sale and will include work spanning Rowan's professional working life, with much work created in and around Woodchurch.

Some of Rowan's work can be seen now as he features in the 'Inspired by Woodchurch' exhibition at Woodchurch Village Life Museum, which is open at weekends until the end of October and at other times by appointment.



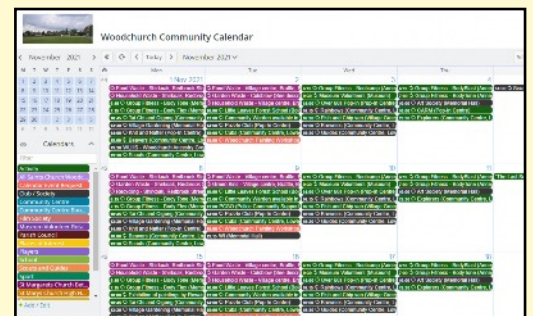
For more information contact Rowan on 01233 861425  
or email [rowancrew@btinternet.com](mailto:rowancrew@btinternet.com)

## [Woodchurch Community Calendar - Can you help?](#)

As the number of events happening in and around the village are increasing, we are looking for volunteers to help ensure that the Community Calendar remains accurate and up to date. Can you help?

The calendar is very similar to other online calendars (e.g. the Google or Facebook calendars) and so is simple and intuitive to use. It is updated online through your Web browser. We are looking for a small team that can help spread the work and to help broaden its sources. Full training will be given.

With different groups within the village communicating in different media it is difficult to ensure that all of the events are picked up or updated. We are therefore looking for volunteers who are active in different areas.



### **Are you any one, or more, of the following categories:**

- A member of several village societies.
- An avid follower of the various village Facebook groups.
- Involved in the Church, Scout or Guiding events or village sporting.
- Would be able to review the items submitted for the Newsletter each month to check event dates.

**If so, we would like to hear from you. Please contact us through The HUB.**

The full Community Calendar can be found at [www.woodchurchhub.uk/community-calendar](http://www.woodchurchhub.uk/community-calendar)

## [Woodchurch Football Club LOTTERY](#)

Woodchurch FC are delighted to announce the launch of our club lottery. £36 per year will include players in 12 monthly draws each with a minimum top prize of £100. Forms are available from the Woodchurch Hub, the Jean Mealham pop in centre and the Six Bells. You can alternatively message the club Facebook page. We are able to take payment through cash or cheque at all outlets or by card at the Hub. We can also support BACS payments through the Facebook page. Please support us in this, the more players we get the higher the prize pool.





### [Do you need a meal delivery service?](#)

With many of the home meal delivery services being badly affected by funding cuts, there are now very few that will provide the “meals on wheels” service to Woodchurch village. This has left some families with elderly relatives in the village unable to provide regular meals. Woodchurch HUB recently contacted the Social Hub at Tenterden to enquire whether they can fill this gap and they agreed that they could providing there were 5 or 6 people (at least) in Woodchurch requiring this service.

[Sample menus and more detailed information are available from The Woodchurch Hub and the Pop-In Centre.](#)

It would also help if volunteer drivers from the village would come forward too. This does not have to be a daily task, whatever suits your week.

To register an interest in either the meals service or becoming a volunteer driver please email [enquiries@woodchurchhub.uk](mailto:enquiries@woodchurchhub.uk) or phone 01233 861381. Alternatively you can contact the Tenterden Social HUB directly on 01580 762882

### [Tenterden Social HUB Meal Delivery Service](#)

Once there are sufficient residents in Woodchurch registered for the service it will be very easy to use.

They will deliver menus out to you every Monday so that you can choose your meals for the following week. You can easily let them know your choices either by phoning them on the number at the top of the menu or by handing the completed menu to the delivery driver.



All meals are 2 courses and cost £7.50 per meal including delivery. Payment can be made on the day to the driver or you can be invoiced monthly for the service. Meals will be delivered between 12.15 - 1.30pm.

**[The meal will arrive HOT ready to eat.](#)**

### [Ashford's Hidden Treasures \(16\) - Kindertransport children in Woodchurch 1939](#)



Jasper Bouverie runs a film company called Funder Films CIC which aims to use film to promote social and environmental awareness. To date Jasper has created a number of films around the Ashford area that discover some of our hidden treasures. Several weeks ago Jasper visited Woodchurch Museum to find out more about the child refugees that came to Woodchurch from Europe in 1939.

In this latest of his films, Jasper talks with Charles Boxer (Museum Curator) about the children and the chance encounter that brought this story to light.

Jasper says that “This hidden treasure makes me feel sad but happy at the same time... sad because it touches on the appalling events leading up to the Holocaust. But happy because it focuses on a survivor – and there’s a wonderful coincidence at the heart of the story.

You can watch the full film at [www.funderfilms.com](http://www.funderfilms.com).



*[Youth Alyah camp at Great Engeham](#)*

Woodchurch Museum has a large archive of old photos from in and around Woodchurch. If you have any that you could donate to the museum to help record the history of our village, please contact the Museum 01233 860240 or bring them into The HUB.

### [Woodchurch Christmas Market at The Jean Mealham Pop-In Centre](#)

The Woodchurch Christmas Market is being held on Saturday 18th and Sunday 19th December from 10am-3pm both days at the Pop-In Centre.

To secure a table for this new outdoor Christmas Market, contact The HUB by November 14<sup>th</sup> - £10 for Saturday, £15 for both days.

[enquiries@woodchurchhub.uk](mailto:enquiries@woodchurchhub.uk) or phone 01233 861381



### [Advertising in the Parish Newsletter](#)

If you would like to advertise your business or rental property in future editions of the Newsletter please go to [www.woodchurchhub.uk/the-hub/newsletters/parish-newsletter-advertising/](http://www.woodchurchhub.uk/the-hub/newsletters/parish-newsletter-advertising/) or contact [enquiries@woodchurchhub.uk](mailto:enquiries@woodchurchhub.uk) for more information.

## Woodchurch Village Life Museum 2021/22 150 Plus Club

Woodchurch Village Life Museum invite you to join their 2021/2022 "WOODCHURCH MUSEUM TRUST 150 PLUS CLUB" which is a lottery. Cash prizes are given to the winners each month: the remainder goes to the Woodchurch Village Life Museum. Although the Museum is a charity and is operated entirely by volunteers, it still costs £7,000 each year to keep the museum open. The 150+ club is one of our main fundraising activities and contributes about a third to our required funds.



**The annual contribution to the 150 Plus Club is just £12 (£1 per month)** and you will receive four numbers for the year. Each month three winning numbers are randomly drawn, commencing in October.

### **THERE ARE THREE PRIZES TALLING £100 TO BE WON EVERY MONTH.**

- FIRST PRIZE £50
- SECOND PRIZE £30
- THIRD PRIZE £20



Winners are notified directly and the results are published each month in the village newsletter. The Museum has been raising funds through the 150 Plus club for 20 years and the cost per ticket has always remained the same.

If you would like to be included in the next draw please contact **Joyce at [jnash@nashweb.net](mailto:jnash@nashweb.net)** before **25<sup>th</sup> October** or contact **The HUB** for a registration form.

## The New School Year

The school year started in September and across the county schools are welcoming new starters into reception classes and returning pupils from their summer break. While teaching and support staff have successfully confronted numerous challenges of the coronavirus pandemic for the past eighteen months, a century ago teachers faced a very different problem - how to get children back into school at the beginning of the new term.

On 8 October 1894, Thomas Kenward (headteacher 1880-1923) wrote 'School opened at 9 this morning. Only 9 children in attendance as the hop picking is not finished'. In agricultural communities such as Woodchurch there were clearly competing priorities, gathering in the harvest invariably trumped sitting in a stuffy classroom copying letters onto a slate or reading aloud in class. There was no noticeable change twenty-four years later when in 1918, with the First World War nearing its end, Mr Kenward's entry for 16 September noted 'Re-opened school today with only 4 children. Registers were therefore not marked. All the others are hop-picking'. The school had already closed earlier than planned in July that year 'as the bigger children are required to work on the land at harvesting and bean cutting'.

One can only imagine the frustration of having a virtually empty school but resigned to the fact that the children were doing important work, and few would be at their desks until the autumn crops were in.



*Some of the children attending the National School (now Woodchurch CE Primary School) probably taken around 1897. Many of those pictured here would have been absent at the start of the school year.*

The records for Woodchurch Primary, which provide some fascinating insights into the day-to-day running of the school including a complaint against a teacher accused of drunkenness, are kept at the Kent History and Library Centre in Maidstone (catalogue reference CC/C-E/S/400).

Reproduced by kind permission from the Woodchurch Ancestry Group [www.woodchurchancestry.org.uk](http://www.woodchurchancestry.org.uk)

## Village Lost Property at The HUB

If you find any lost property around the village please bring it to The HUB. We will hold it there waiting to be claimed for four months. For any valuable/important items that we have handed in, we will place notices online, in the Newsletter and on social media. If you have lost something around the Village please let The HUB know as it may have been handed in.