



# WOODCHURCH COMMUNITY NEWS

*The village community working together*

June 2021

Contact us: Telephone 01233 861381 Email [enquires@woodchurchhub.uk](mailto:enquires@woodchurchhub.uk) Web [www.woodchurchhub.uk](http://www.woodchurchhub.uk)

**OVER 800 COPIES distributed every month in the Woodchurch area**

## WOODCHURCH Community Calendar



### Weekly events:

#### Saturdays:

**Boot Camp** 9:00am-10:00am on the Village Green

#### Mondays:

**Knit and Natter** 2:00pm - 3:30pm in the Pop In Lodge, Lower Road

**Beavers** 6:00pm - 7:00pm in the Community Centre, Lower Road

**Scouts** 7:30pm - 9:00pm in the Community Centre, Lower Road

#### Tuesdays:

**Puzzle Club** 2:00pm - 4:00pm in the Pop In Lodge, Lower Road

**Cubs** 6:00pm - 7:00pm in the Community Centre, Lower Road

#### Wednesdays:

**Pop-In** 2:15pm - 4:30pm Tea and coffee and boot fair marquee at the Jean Mealham Pop-In Centre

**Fish and Chips** 4:30pm - 7:30pm in the Village Car Park

Previous editions of the Newsletter can be found on The HUB Web site [www.woodchurchhub.UK](http://www.woodchurchhub.UK)



### Thursdays:

**Pizza Van** 4:30pm - 7:00pm in the Village Car Park (every other Thursday)

**Explorers** 7:30pm - 9:30pm in the Community Centre, Lower Road

### Other Events:

Sun 6<sup>th</sup> **Morning Worship** 11am at All Saints Church Reverend Mike

Sun 13<sup>th</sup> **Holy Communion** 11am at All Saints Church Reverend Mike

Sun 20<sup>th</sup> **Morning Worship** 11am at All Saints Church Reverend Sue

Thu 24<sup>th</sup> **Woodchurch Parish Council Meeting** 7:00pm - 9:00pm at the Memorial Hall Annexe

Sat 26<sup>th</sup> & Sun 27<sup>th</sup> **The Wealden Literary Festival** all day at Boldshaves Gardens

Sat 26<sup>th</sup> **Bumblebee Garden Party** WinBloom with the Bumblebee Conservation Trust 10am - 3pm around the village

Sun 13<sup>th</sup> **Holy Communion** 11am at All Saints Church Reverend Canon Sheila McLachlan

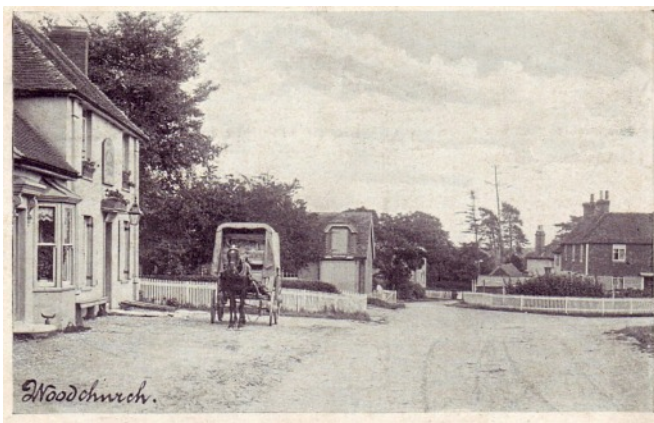
## Woodchurch Ancestry Group - Bonny Cravat Inkeepers and Publicans

The **Bonny Cravat** has reopened this week under the capable management of Andrew and Diane Ward, so we've taken this opportunity to update our list of innkeepers and publicans that goes all the way back to 1690. It's hugely important to support local businesses as we emerge from the pandemic lockdowns, restrictions on travelling and social gatherings.

Woodchurch without a pub... Unthinkable when we had three in the village! Recently down to none but now back up to two. Mine's a pint!

You'll find the updated list of publicans here:

<https://www.woodchurchangestry.org.uk/reference/bonnycravat.html>



## WOODCHURCH SURGERY UPDATE

As the politicians tear strips off each other for poor planning I recognise that our own disaster recovery plan is more focused on fire, flooding and sheep invading through the soon-to-be-fixed fence. The last proper pandemic effecting the UK was Spanish flu over 100 years ago and I think we can be proud for playing our part in providing 3283 vaccines from Woodchurch. Sadly, though, there really will be no more from us so any new vaccines can only be got from Mass Vaccination Centres over which we have absolutely no control or influence.

Some people attending MVCs have been rejected for one reason or another which baffles me completely. A few have also been told they should only be immunised in the hospital due to serious allergies in the past. There is genuinely no referral route for this yet so we are just keeping a list of names and are passing this on to the CCG to sort out. Let us know if you are affected by this.

With the number of vaccines given there will be some "mishaps" with the record keeping. Without wanting to make people nervous that they will be turned away at Heathrow thinking they have been double-jabbed it is worth checking your vaccination status on the NHS App.

When you are given the vaccine it is recorded on a system called Pinnacle which then migrates the details onto your GP records. The NHS App bolts on to your GP records and can be used to access various information (results of blood tests etc) and request medication. On the App are the details of your vaccination status which can be downloaded as a PDF and printed out. Especially in the early roll-out there were problems with the stability of Pinnacle and there is always a possibility of human error so needless to say there will be some inconsistencies. If you check and a vaccine is missing please tell the provider that vaccinated you to correct it.

On a different note I attended a virtual seminar on Domestic Abuse which highlighted some very troubling stories and events. The reported incidence of abuse has sadly increased in lockdown by as much as 30%. The repeated message was that "Adverse Childhood Experiences" were one of the biggest influencing factors in those perpetrating abuse which, while not entirely surprising, has to make us remember that how we are raising this

generation will influence their future.

We have a wonderful member of the team called Helen Brown who is about to officially become part of our PCN staff. She is already part of our social prescribing team but purely for children. She has made a really positive impact already for families experiencing problems accessing mental health support for their children so please reach out if you are having frustrations with mental or behavioral issues with anyone under 18. The "Rising Sun" and "Ashford One-Stop-Shop" provide support for men and women experiencing domestic abuse. They are completely confidential and provide emotional support and legal advice.

We are anticipating great weather for the half-term which seems a very late start to the summer. I can't wait for the smell of BBQs and the long evenings - let's enjoy it while we can!

Best wishes on behalf of the team at Woodchurch Surgery

Jack Hickey - GP

### [Knit and Natter and Puzzles](#)

No changes as to time and place - but we can now go inside, distanced, if the weather is inclement



**Try our professional  
Home News  
Delivery service**

**New customer introductory  
offers available**

**Have your paper delivered before you go to work and  
read it with your breakfast!**

- ✓ Early delivery - before 6.30am (7.30am at weekends)
- ✓ Excellent communication - phone or email ALWAYS responded to
- ✓ Different billing options available
- ✓ All national and local newspapers available to order
- ✓ All magazines available to order
- ✓ Well established reliable company with over 4,400 customers

**Place your order today by telephone on  
01580 763183**

or email us at [mail@jackiesnews.co.uk](mailto:mail@jackiesnews.co.uk)  
or go to [www.jackiesnews.co.uk/place-your-order](http://www.jackiesnews.co.uk/place-your-order)





## WOODCHURCH PARISH COUNCIL • **UPDATE** •

The Parish Council is continuing our work to repair the play area on the Green. We wish to thank the community for your patience regarding this. We are working with the contractor to get the surfaces replaced and are hopeful this will be resolved soon. The recent unpredictable weather has not been helpful in this matter. In the meantime, the surfaces are not ideal and we wish to request that all those who use the play area ensure that children are properly supervised. This play area is used at resident's own risk, so please ensure you are monitoring children using it as we really would hate to have to close the park completely.

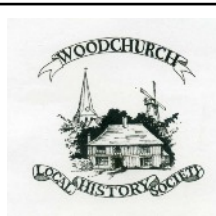
The Parish Council would also like to remind all residents that all litter must be properly disposed of in the bins around the village. There has been a noticeable increase in litter being left behind, particularly on the Green, so please act responsibly and ensure you dispose of rubbish properly.

The Parish Council has also discussed the parking situation in the village. We are looking at what we can do to try to ease the congestion at certain times of the day, particularly around the school at pick up and drop off times. In the meantime, please can those residents taking their children to school ensure that they are parking responsibly and considerately to allow residents to get in and out of their drives as well as get in and out the village safely. Huge thanks to the new team at the Bonny Cravat Pub who have very kindly permitted parents to park in their car park for the drop off in the mornings. This is much appreciated and will hopefully help to ease the congestion. Parents are also welcome to use the village car park by the Green for the drop off and collections as well.

We were also contacted recently by an artist who has said that they would be willing to support the ongoing Brattle bus stop renovation project that we are working on. We are keen to get in touch with this person to discuss plans further, however we do not have a contact information! If you made a call recently and made this kind offer on our voicemail, please can you get in touch with us again, either through The HUB or email [clerk@woodchurch-pc.gov.uk](mailto:clerk@woodchurch-pc.gov.uk).

Finally, we discussed at our May meeting that there may be some funding available for community projects in the village. We are keen to hear from you regarding this. What would you like to see being done to the village? Are there improvements you would like to be made or something that you think might be good for us to assist with? We welcome your thoughts on this so that, should funding become available, we can look at what can be done.

**Woodchurch Football Update** - the first team finished 2nd in the league this year and reached the semi final of the league Cup. They just couldn't quite get over the line in either competition! A great achievement though.



We hope to restart our talks programme in September this year in the Memorial Hall. We meet on the first Monday of the month at 7:30pm.. New members are always very welcome, paying £5 (to end of

year) as are visitors, paying £3 per visit. We are a friendly group of people and our programme of talks draws upon general topics from all over Kent.

**Monday September 6th** - a talk entitled 'Woodchurch, Pam and the Orpington Car'. Pam Moate's grandfather (Frank) and his business partner built the Orpington Car for production. Frank and his family later moved to Woodchurch to take up farming.

**Monday October 4th** - a talk 'acted' by Steve Hookins entitled 'Doing Your Bit'. Steve 'appears' as an ARP warden in an amusing presentation.

**Monday November 1st** - three 20 minute talks by members of the Woodchurch Ancestry Group. Josie, Jon and Gary present three separate aspects of old village history.

**Monday December 6th (Members Evening)** - the theme or topic for this evening has yet to be decided.

**Summer event** - a strawberry cream tea has been arranged for members during August at a local venue. This will be a welcome chance to have a get-together after this long period of lock-down.

For more information, ring Geoff (Turner) on 01233 860393.


### Surgery Opening Hours

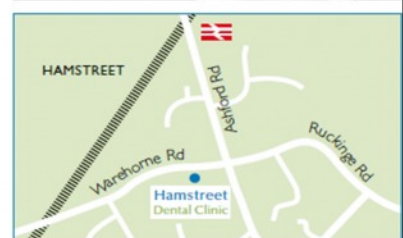
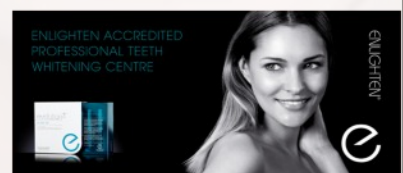
Monday to Friday 9am to 5pm



### Where to find us...

Hamstreet Dental Clinic  
Warehorne Road  
Hamstreet  
Kent TN26 2JJ

 Find us on facebook



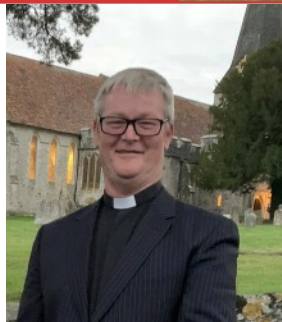
**Tel: 01233 733848**

Email: [hamstreetdentalclinic@gmail.com](mailto:hamstreetdentalclinic@gmail.com)



# All Saints Church

Rev'd Sue and I were having a spring clean of the Rectory recently. Goodness, how dust seems to settle in the most inaccessible of places. And the rain just keeps on coming. Perhaps reading this now, in June, it has stopped?



The lockdown is slowly ending, and for some very slowly indeed. We have been back in Church for a few months now. I have my first wedding, hopefully, towards the end of June, in Biddenden Church. They're still waiting in Smarden and Biddenden to recruit a new Vicar so we hold them in our prayers.

We have upcoming weddings too in High Halden and Woodchurch and we're taking wedding 'bookings' for Bethersden too.

Christenings are coming back again. Sue and I are looking forward to them once more. These Holy Services are important to us but they will be even more so for the families who have not been able to spend good times together. Being in Church to celebrate and worship, and to be with loved ones will be especially poignant.

We've had a long winter. As the poet, Percy Shelley wrote in his 'Ode to the West Wind':  
"If winter comes, will Spring be far behind".

We step forward together, confident that God is with us. Let the sun blaze and the flowers bloom. The Parishes of Bethersden, High Halden and Woodchurch are back. May God be with us all and the communities in which He has placed us.

Every Blessing, Mike  
Associate Priest  
The Rectory, Bull Lane, Bethersden, TN26 3HA



**Group fitness classes with Jo Furneaux** on Mondays and Thursdays between 6.15pm - 8pm at Woodchurch Memorial Hall. I offer 3 different types of fitness class - covering cardio, resistance and flexibility exercises, aimed at all abilities. Sessions are run in accordance with a Covid-19 risk assessment. New comers welcome. Call Jo Furneaux on 07961 978068 to book your free taster. Booking essential since numbers are limited. For further info visit: <http://www.jofurneauxfitness.co.uk>

**WOODCHURCH IN BLOOM**  
INCORPORATING

**WOODCHURCH GARDENING SOCIETY**

AND

**Bumblebee Conservation Trust**

WILL BE HOSTING A

## **Bumblebee Garden Party**

on **Saturday 26th June** from **10am**

This will involve informal walks around the village stopping at flower rich hubs in the wild flower meadow, a village smallholding (with formal planting, wild flower plots and orchard) and the church.

At each hub volunteers will be present to show you bumblebees, other pollinators and advise on plants to help our pollinators. There will be a Bumblebee Conservation Trust stall with all sorts of bee related goodies.

**Fun for all the family. Bring a picnic and enjoy the day!**

### Informal Walks

**11.00** Wild Flower Meadow

**1.30** Wild Flower Meadow

**11.45** Small holding  
(meet in Hub car park)

**2.15** Small holding  
(meet in Hub car park)

**12.30** Churchyard  
(meet by side gate)

**3.00** Churchyard  
(meet by side gate)



**WEALDEN**  
LITERARY FESTIVAL

**BOLDHAVES GARDEN, WOODCHURCH,  
KENT TN26 3RA**



**WEALDEN**  
LITERARY FESTIVAL 2021

**26-27 JUNE**

A celebration of **nature, creativity, & wellbeing** & outdoor **adventure**  
amidst the **Garden of England**

Box Office:  
[wealdenliteraryfestival.co.uk](http://wealdenliteraryfestival.co.uk) / 01580 292169  
Boldshaves Garden, Kent TN26 3RA

Illustration: Yord Zinner Design: vancouverdesign.co.uk



Amazingly, yet another month has passed and we are now looking forward to June, and hopefully, some warmer, dryer, summer weather. Dr. Gehad Homsey was due to be our speaker on Tuesday, 8th June, with his talk and slide presentation on "Mercy Ships". Mercy Ships UK is a charity which provides hospital ships manned entirely by volunteers, who offer vital free medical and surgical care to the impoverished local inhabitants of western Africa and other poor countries throughout the world. As in previous months, when the WI have not been able to meet, our Programme Secretary, Sandra will re-schedule the speaker to a more convenient date, thus ensuring that we do not miss out on the opportunity of welcoming Dr. Homsey to Woodchurch.

At the time of writing in mid-May, there has recently been a further easing of lockdown. It is now possible to enjoy a restaurant meal indoors and attend cinemas and theatres, but apart from the rules relating to life events such as weddings and funerals, there are no clear instructions given for clubs and societies. Unfortunately, the recent rise in cases in some parts of London and in the north of England on account of the Indian variant of the virus has, of necessity, tempered our enthusiasm or any newfound freedoms and encourages us to feel more hesitant about returning to normal (or a new normal) life too quickly. On the plus side, most of us have now received our second dose of the vaccine and so, feel more confident about venturing out into the world again. Nevertheless, the Committee naturally still wish to be cautious and so we intend to meet to discuss this fully in mid-June. We should then have a much clearer idea of our own road map out of lockdown. We had also hoped to be able to host a few garden parties for small groups this spring, but so far the weather has not co-operated, being too chilly for sitting outside in April and now, in May, too unpredictably wet! Hailstones even made an appearance in some gardens in the east yesterday, so sadly it is not yet conducive to hosting a successful outdoor event!

Josie provided an excellent quiz on Zoom this month. Topics included Current Affairs, Books, Colours, Real Names and we even went shopping (virtually, of course) in London, so we learnt inter alia, which daily newspaper celebrated its 20th anniversary recently (The Guardian), which book is suggested by these three clues; Denny, Highbury and Brenda Blethyn (Pride & Prejudice) and which famous London store opened its doors in 1707 (Fortnum & Mason). Catherine was the lucky winner. Sadly there will be no quiz in June, but who knows what July holds in store for us?

Finally, the two photos recall happier (and safer) times and show members enjoying a river trip along the upper River Medway at Maidstone in September 2019.



#### [Rental Properties In Woodchurch](#)

If you have a property/room to rent in or around the village, why not advertise it in our "Where to stay in Woodchurch" section. The price per advert is £4 per month (£44 per year). For more information contact The HUB



**CGM Builders Ltd**

**07944 940 182**

EST. Over 35yrs

**Extensions  
General Building  
Property Maintenance  
Brickwork/Stonework Specialist  
Landscaping**

**Free Estimates**

**Chris@cgmbuildersltd.co.uk**

**[www.cgmbuildersltd.co.uk](http://www.cgmbuildersltd.co.uk)**



## Missing "Persons"

During the course of Tuesday evening (May 25th), Mr and Mrs Nut disappeared from our planter outside our house on The Green. If you have any information as to their whereabouts please contact The HUB. It will be treated in the strictest confidence. We only want the safe return of this delightful couple who will be missed by many adults and children alike in the village.



Thank you  
Stuart

## WOODCHURCH VILLAGE LIFE MUSEUM



**Woodchurch Museum is now open from 10am to 4pm at weekends and Bank Holidays.** Entry is free (though we always appreciate donations) and we are only a short walk from the village pubs, down Susans Hill.

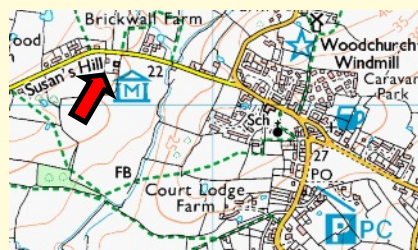
This year we have a new exhibition called **"Inspired by Woodchurch"** which includes information and items from village residents and



artists, both present and past, who have been inspired by our beautiful village.

**Walkers are welcome.** If you are walking around the village and are

looking for a place to stop, the Museum is a good place to take a break. Cold drinks and toilets are



available as well as free high-speed broadband. We have outside seating on the Museum lawn where you can eat your picnic before continuing on. Well behaved dogs are welcome in the Museum grounds.

**Village publications and souvenirs are available,** including the popular booklet **"A Stroll Around The Green"** which provides a fascinating history of the village around the Green.

**Need a  
planning  
application?**  
**Call 01233 861177**  
**vernacularhomes.com**



## WoodchurchYardTogether ("WYT")

We really appreciate all the generous donations & support shown in so many ways, since we started our volunteer group 2 years ago. We are currently in need of replacing the sit-on mower used to cut much of the front of the Churchyard, so we are hoping to raise £1000 towards this and our ongoing mowing and strimmer costs.

If anyone would like to help us and contribute towards this, please contact Philippa Jones:  
philippa.nick@btinternet.com or 07774608281.

Alternatively, we will have a collection box available for donations on our WYT volunteer weekends or you go to The HUB Web site and click **"DONATE"**. Together we are really making a difference to our beautiful Churchyard in Woodchurch!

Thank You



## Museum 150+ May Lottery Draw

Support your local museum- you could win a £50/£30/£20 prize every month. An annual ticket costs £12 in September. Now selling for £3 for 3 months. For more information please contact Joyce Nash via The HUB - [enquiries@woodchurchhub.uk](mailto:enquiries@woodchurchhub.uk) or 01233 861381

|                  |            |                       |             |
|------------------|------------|-----------------------|-------------|
| <b>1st prize</b> | <b>£50</b> | <b>Jeremy Peel</b>    | <b>1296</b> |
| <b>2nd prize</b> | <b>£30</b> | <b>Colin Whitaker</b> | <b>104</b>  |
| <b>3rd prize</b> | <b>£20</b> | <b>Mrs Brant</b>      | <b>378</b>  |

## We can now scan, print, copy and laminate A3 pages and can print booklets at The HUB.

|                        |  |
|------------------------|--|
| Photocopies (per side) | A4 b/w - 10p, A4 colour - 15p<br>A3 b/w - 15p, A4 colour - 20p |
| Laminating (per sheet) | A4 - 15p, A3 - 25p   |



# Simple Kent Funerals

Relaxed, flexible, imaginative, economical, caring

Applefield Cottage, Redbrook Street, Woodchurch TN26 3QS

Call Toby on 07806 613297 • [www.simplekentfunerals.co.uk](http://www.simplekentfunerals.co.uk)

## WOODCHURCH ART SOCIETY

As with all Societies, we have been waiting patiently for the go-ahead and after months away we are finally (fingers crossed) looking forward to meeting up again at the beginning of June. Obviously in accordance with the Covid rules! We will be meeting on the Green, brushes at the ready - well, maybe but certainly to catch up with everyone!

Hopefully, with the vaccine success, we are aiming and hoping to be able to return to our normal, weekly meetings in September. Like all groups we will be feeling our way and do not have any big plans for this year. But, with luck we will be able to hold our "famous" Art Exhibition at its usual time in 2022! So, put that in your diaries and watch this space.....!

Pauline Feakes

## WoodchurchYardTogether("WYT")

Our next volunteer gardening weekend in the  
Churchyard is:

19<sup>th</sup> & 20<sup>th</sup>  
June

PLEASE COME ALONG AND  
JOIN US & HELP KEEP OUR  
CHURCHYARD TIDY

Keeping in Touch:

Email: [Philippa.nick@btinternet.com](mailto:Philippa.nick@btinternet.com)

Phone: 07774 608281

Or follow us on Facebook



Search: 'WoodchurchYard Together'



We were very excited with the first internal event being raised on the 29<sup>th</sup> May at a secret location only members know of, remember your show of presence people, or "ye be walking the plank".

**THE BIG THIN**  
*Red line*

Numbers have grown and we held our AGM prior with the main topic on the agenda of the Picnic on the Green.

With things heading in the right direction with COVID we still aim to bring Picnic on the Green to the community 7<sup>th</sup> August, I think we all need to lift our spirits and we have got some great acts and feel its something for everyone.

As ever funds are crucial to holding the event and we our pulling strings to make the event work, in the background a lot of effort to get this up and running remains, if anyone wants to assist please as ever let us know? You can also help by going to The HUB Web site and click **"DONATE"**

We also are glad to see that both our local pubs will be open on the day and wish them all the best as they move forward through the rest of the year. Well done Woodchurch in Bloom and the Yard party team for all the efforts through this period of unrest, making the village stand out as one of the best in Kent for community efforts. We have sponsored a flower bed to show our support called Cherry Mill Plot in the Mill View estate, thank you to all those who joined in planting.

We are still accepting members please contact us on Facebook or call me 07584 075 008 or via email [Patrick7171@hotmail.co.uk](mailto:Patrick7171@hotmail.co.uk)

We will be warming it all up with Picnic on the Green, and announcing the acts that will be appearing over the next week, so watch the Facebook page.

**Pat Byrne**

## [A BIG thank you from The Six Bells pub](#)

**Wow, what a welcome we received from Woodchurch when we opened the doors of the Six Bells in April.** We have been overwhelmed with the kind comments and support that everyone has shown us. And now we can welcome you inside and show you what we have been



doing since we, as a family, purchased the Six Bells in September 2020. We have tried to keep the wonderful interior as authentic as possible and have made some changes, which include a huge number of compliments about the "Toilets", of all things .....

London Pride is well and truly back up and running along with the other cask ales and the enthusiasm from our customers has been amazing. The day when the Wisteria started to bloom, the Morris Men were singing on the patio and the Steam Engine arrived outside, the sound of laughter and seeing such happy faces will stay with us forever.

Thank you so much Woodchurch, we are here to stay in The Six Bells Inn and look forward to many, many more wonderful days.

We are in the process of arranging some future events so if anyone has any suggestions, please do pop in and see us. Hopefully, we are all on the way to a brighter future and can't wait to see what it brings.

From all of us at The Six Bells

## [Jean Mealham Pop-In Centre](#)

As from the beginning of June, the over 60s have now re-started (Although we do now welcome anyone, who is over 50.) We meet every Wednesday afternoon from 2. to 4pm. It is mainly a social gathering with refreshments provided. During the two hours we hold a short bingo session (about 10 minutes) a general knowledge quiz and a raffle. However it is worth mentioning that for the time being it would be preferable for people to bring their own mug. Table tennis tables, both inside and out, are available during this time. Further details from Richard, 07798 566 849

During the same time the marquee is open for anyone to visit, to either make donations or purchase any of the thousands of items for sale. We can also be available at any other time for viewing, by appointment. Tel: Clive or Shirley for further details on 01233 860 139.

On a separate note we have organised prom/pop concerts on Sat. 28th & Sun. 29th August. (August bank holiday weekend.) There



will be two on each day. Both beginning at 2pm and 7pm. Due to covid, tickets must be booked in advance. The cost of which will be by a donation on the day.

Tel: Richard on 07798 566 849 for further details.



[Woodchurch Players](#) 'hosted' the Kent Drama Association Radio Play festival Awards presentations on Saturday 22nd May in Woodchurch Memorial Hall. It was recorded and sent out to members to watch on their computers. Grateful thanks go to Tim Nolan, Eliot Gannon and Rocket Wady for the hard work and imaginative skill they put into all our productions. The event was hosted by Beth Fenton (Chair of the KDA) and adjudicator Amanda Sharpe Conroy.

We have been planning our next pantomime in the hope that we will be able to get together again soon as a group. Emma Priest has agreed to direct the pantomime and has chosen 'The Adventures of Robin Hood'. Our usual musical director Mike Headling is stepping down and we extend grateful thanks for all the work he has done over the years, rehearsing group singing, solo singers and leading us in chorus singing. I speak from experience as a 'non singer', it's lovely when you are offered the part you wanted - the comic part, or pantomime villain you read for in auditions. On arriving home and reading the whole script and seeing the dreaded word next to your character's name - 'song'! He has never failed to help or go through any songs that cast members are worried about. Hopefully if rules stay as they are we will be holding a special meeting in July to recruit backstage support - Stage Manager, back stage crew, front of house, in fact the people you never see but who are so important we couldn't put a production on without them. Val Smith