



WOODCHURCH PARISH NEWS

The village community working together

May 2021

Contact us: Telephone 01233 861381 Email enquires@woodchurchhub.uk Web www.woodchurchhub.uk

OVER 800 COPIES distributed every month in the Woodchurch area

WOODCHURCH Community Calendar



Weekly events:

Saturdays:

Boot Camp 9:00am - 9:45am on the Village Green

Mondays:

Knit and Natter 2:00pm - 3:30pm in the Pop In Lodge, Lower Road

Beavers 6:00pm - 7:00pm in the Community Centre, Lower Road

Scouts 7:30pm - 9:00pm in the Community Centre, Lower Road

Tuesdays:

Puzzle Club 2:00pm - 4:00pm in the Pop In Lodge, Lower Road

Cubs 6:00pm - 7:00pm in the Community Centre, Lower Road

Wednesdays:

Pop-In 2:15pm - 4:30pm Tea and coffee and boot fair marquee at the Jean Mealham Pop-In Centre

Fish and Chips 4:30pm - 7:30pm in the Village Car Park

Thursdays:

Pizza Van 4:30pm - 7:00pm in the Village Car Park (every other Thursday)

Explorers 7:30pm - 9:30pm in the Community Centre, Lower Road

Other Events:

Nightingale Walks - Boldshaves daily from 6:00pm - 7:00pm until 16th May

Sat 1st **Woodchurch Reserves v Tenterden Town** 2:45pm - 4:30pm on the village green
Wildflower Meadow 3:00pm - 4:00pm on the village green- Continues Sunday and Monday

Sun 2nd **Morning Worship** 11:00am at All Saints Church



Woodchurch HUB will reopen its doors on Monday 17th May

Although Woodchurch HUB has remained open "virtually" throughout the pandemic lockdowns, from Monday 17th May it will resume opening its doors again "physically". The HUB will be open Monday to Friday from 10am to 1pm and it will trial also opening on Saturday mornings. The HUB is here to support all village residents, clubs and societies, and also our village businesses. If you are looking for local information, need something copied, printed or scanned, or just need a chat, the HUB is there to assist.



Tue 4th **Woodchurch Annual Parish Council Meeting** 7:00pm - 9:00pm (Zoom)

Thu 6th **May Elections** 7:00am - 10:00pm at the Memorial Hall Annexe

Sat 8th **Woodchurch First v Lenham Wanderers - League Cup Semi Final** 2:00pm - 3:45pm on the village green

Sun 9th **Holy Communion** 11:00am at All Saints Church

Sat 15th **Woodchurch Reserves v Len Valley** 2:45pm - 4:30pm on the village green

Sun 16th **Morning Worship** 11:00am at All Saints Church

Mon 17th **Woodchurch HUB opening** weekdays from 10:00am - 1:00pm at the HUB

Sat 22nd **Woodchurch Museum opening** 10:00am - 4:00pm at the museum, Susans Hill

Sun 23rd **Holy Communion** 11:00am at All Saints Church

Thu 22nd **Woodchurch Parish Council Meeting** 7:00pm - 9:00pm (Check Website for location)

Sun 30th **Benefice Service** 11:00am at All Saints Church

Previous editions of the Newsletter can be found on The HUB Web site www.woodchurchhub.UK





WOODCHURCH PARISH COUNCIL • UPDATE •

There have been some significant planning proposals being discussed - with the Kirkwood Avenue proposed development discussed at the April meeting and the Appledore Road proposal being discussed at the meeting at the end of May, we want to remind you all again that our role is to represent the views of the whole community. If you have any comments to make on any planning issues, please get in touch with us to discuss these so that we can ensure all views are taken into account.

We have also booked in some maintenance for the flag pole in the village car park. If you see scaffolding erected around it please make sure that all children are kept away and that cars are not parked too close.

We are also working hard to get the play area issues repaired so that the community can enjoy this, especially in the increasingly sunny weather. We wish to apologise for any inconvenience caused by certain areas being closed off, however this has been done to ensure children's safety on the equipment. If there is a barrier or a notice stating that equipment is not used, please ensure children are not using this equipment or pulling down any safety tape.

The village has also faced some disruption this month due to the issues with water pipes on Front Road, resulting in it being shut and some parishioners being left without water. This is something that the Parish Council is monitoring, and we have contacted the water company to ask them to notify us before future work occurs so we can then put notices out on the boards and on social media to warn residents. If you are left without water, please call 0333 000 3330 and Southern Water can arrange for you to have bottled water delivered while you are cut off. If you have any concerns regarding this or any future works, please let us know.

We have had a member of the Parish Council step down this month and so we are looking for a new member to join the team. If you are a dynamic individual and would like more information about how you could help the village continue to prosper please contact Judith Batt, the Clerk to the Council (on 01233 733994 or email clerk@woodchurch-pc.gov.uk) or complete the form online at www.woodchurchhub.uk/parish-council/. We will be looking to recruit the new member to the Parish Council in mid-May.

The Parish Council would like to send our gratitude and thanks to Mr Alan Baker, who has recently stepped down from the council. Alan was a valued member of the team and a great Chair for the council. We really appreciate all the work he has put into the Parish Council on behalf of the residents of Woodchurch.

Alan continues his contribution to the village in various other voluntary roles.

Meet our Parish Councillors Cllr. Eleanor Jones

I have lived in Woodchurch for five years and live with my partner, our soon to be two year old twin daughters and our dog. After living in London, then Dubai, then Perth - Australia and back to London, I felt it was time to leave the city life and relocate to the countryside. Luckily we stumbled across a property in Woodchurch village and as they say the rest is history.



I believe that we are incredibly lucky to have the great outdoors on our doorstep, as well as such a wonderful village community. I am a firm believer that our surroundings have a large impact on our wellbeing, and mental health, and this is one of the reasons I joined the Parish Council last year. As someone who has survived a Cancer diagnosis, I truly appreciate the quality of life that can be found by living in Woodchurch.

Brattle Bus Shelter

One of the first impressions visitors have of Woodchurch when entering the village from Tenterden is the bus shelter opposite the Brattle estate. The Parish Council feel this bus stop needs some TLC and we would like to improve its appearance as well as its function. Various ideas have been considered including adding some seating and adding a window. Also the possibility of getting a local art group involved in helping us make the bus stop more appealing. Do you know of any local artists who might like to help us transform the bus stop? Do you have any ideas of what you would like to be changed? The Parish Council welcomes all sensible suggestions.

How to contact your Parish Council

In person: By talking to one of your councillors - details on the Parish Council Web site

By email: clerk@woodchurch-pc.gov.uk

By phone: 01233 733994

Through The HUB: Place your correspondence in a sealed envelope marked "Parish Council" and deliver to The HUB

By post to: Woodchurch Parish Clerk

Keg Barn, Hornash Lane, Shadoxhurst, Kent, TN26 1HX

Through the contact form on the Parish Council Web site:

www.woodchurchhub.uk/parish-council/

✝ All Saints Church



Dear Friends,

I hope that you were able to enjoy some Easter celebrations last month, as we start to emerge from lockdown. It was a great joy for Mike and I to see so many people in church and online coming together for Holy Week and Easter.

I celebrated being in post as your Rector for six months on the 7th April. Whilst this has been a challenging time to arrive in a new place, it has been a great joy, settling into our home and starting to get to know parishioners in each village, and also starting to explore Kent.

We are keen to become more involved in village life in Woodchurch as our communities start to be able to meet up again. I would also like to ensure that our church is able to reconnect by restarting over the next few weeks some of the things we have had to put on hold - for instance messy church for families, café church, afternoon teas, visits to and from schools, care homes and other groups. It is a great joy to be booking christenings and to be planning weddings due to take place in the Summer.

I would love to hear from you if you have ideas about anything we might be able to do, for instance history projects in church, a bereavement or memory group. As Christians we celebrate new life at this time of year, so let's plan together how our churches and communities can come together to support and celebrate village life. Do get in touch if there is anything you would like to discuss, and I look forward to meeting many more people over the next few months.

Every Blessing

Reverend Sue Rose
01233 820266 - revsuerose@outlook.com
The Rectory, Bull Lane, Bethersden, TN26 3HA

WOODCHURCH WILDLIFE ON CAMERA

Have you taken any photos of wildlife in and around Woodchurch? If you have pictures that you would like to share please upload them for inclusion in the HUB photo area. You can see the wildlife photos in the Community area.



This photo was taken by Heather Cooper in a garden alongside The Green.

Woodchurch Yard Together ("WYT")

Volunteer gardening weekends in the Churchyard are back! (Restrictions allowing):

22nd & 23rd May

PLEASE COME ALONG AND
JOIN US & HELP KEEP OUR
CHURCHYARD TIDY

Keeping in Touch:

Email: Philippa.nick@btinternet.com

Phone: 07774 608281

Or follow us on Facebook



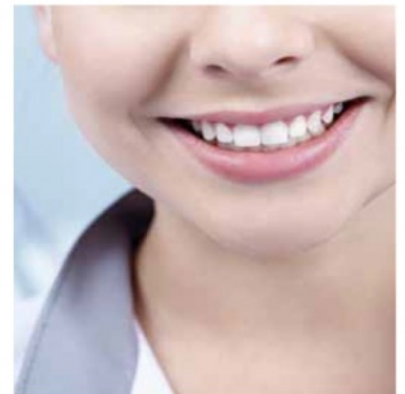
Search: 'WoodchurchYard Together'



WOODCHURCH PARISH NEWS

The Woodchurch Parish News is distributed **free of charge** by The HUB to over 850 houses each month in Woodchurch and surrounding areas. If you are able to help with the costs of production please go to The HUB web site and click the the "Donate" button.


**Hamstreet
Dental Clinic**
Welcomes You




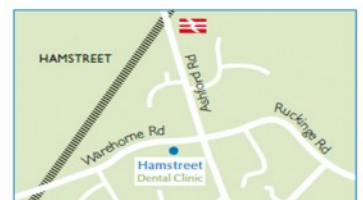
Surgery Opening Hours

Monday	8.30am to 5.00pm	Thursday	8.30am to 5.00pm
Tuesday	9.00am to 6.00pm	Friday	8.30am to 5.00pm
Wednesday	9.00am to 5.00pm	Saturday and Sunday	closed

Where to find us...

Hamstreet Dental Clinic
Warehorne Road
Hamstreet
Kent TN26 2JJ

 Find us on facebook



Tel: 01233 733848
Email: hamstreetdentalclinic@gmail.com

We were really pleased with the number of villagers who engaged with our 'Drop & swap' weekends recently and thank you too to all those who have got involved now in nurturing seedlings to benefit the village later in the year.

We have also been overwhelmed by the energy for our sunflower competition - over Easter, we've calculated we gave away over 1000 sunflower seeds - so looking forward to seeing very yellow gardens later in the summer!

HOPE:

It was third time lucky on Friday 9th April for the start of the creation of 'HOPE', our permanent pebble butterfly, next to the Memorial Hall in Woodchurch. After poor weather and tightening of restrictions putting a halt to the work last autumn & winter, it was worth the wait on Friday with the sun shining as 4 of us started to lay the pebbles into the cement base.

We would like to take this opportunity to thank Chris Woodcock, who has supported us with the building of our permanent structure and everyone else that have helped with donations.

We now hope to finish the creation of HOPE, our butterfly in the next few weeks, after which we will look forward to welcoming villagers to visit and enjoy this special collective memory.

What's next in 2021:

Village Gardening on Monday afternoons has now restarted!

With restrictions now easing, we have restarted our Monday afternoon (meet in HUB car park at 1.30pm) village gardening group. We will of course ensure we adhere to all restrictions.

We welcome villagers of all abilities and experience to join in 'Growing our village beautiful together' and hopefully benefiting from some social gardening and

hopefully benefiting from some social gardening and encourage anyone to bring along their own flask of tea to enjoy too!

May:

Wildflower meadow - Cornfield seeds have now been sown in two areas of the meadow to add biodiversity and colour. On the 1st, 2nd & 3rd May between 3 and 4pm, we hope villagers will come along and help us plant out wildflower seedlings in a designated area on the Green extension. For those villagers that have been kindly growing seedlings over winter, we hope you will be able to bring them along at some point over the dates and times above to plant out too. Thank you to everyone that has supported us with this. We will of course ensure that restrictions at the time are strictly adhered to as with all our Woodchurch in Bloom activities.

July:

Front Garden competition - Please refer to April 2021 HUB Newsletter for full details. Entry forms can be found via Woodchurch HUB website: Front Garden Competition - Woodchurch Hub or hard copies can be found outside the HUB building.

August:

Sunflower competition - Help fill the village with Sunflowers!

**** SUMMER SUNFLOWER CHALLENGE ****



Taking the lead from Woodchurch Surgery Sunflower competition, Woodchurch in Bloom invite villagers to fill the village with sunshine and grow as many sunflowers as possible! There will be a vote on the largest sunflower face, the funniest sunflower face and the tallest plant over the **August Bank Holiday weekend.**

Please join in and bring sunshine to our village

Getting in Touch:

Linda Baker - THRIVE lead: 07795 383945

Philippa Jones - Chair: 07774 608281

WoodchurchinBloom@hotmail.com

Simple Kent Funerals

Relaxed, flexible, imaginative, economical, caring

Applefield Cottage, Redbrook Street, Woodchurch TN26 3QS

Call Toby on 07806 613297 • www.simplekentfunerals.co.uk

WOODCHURCH SURGERY

The team have been busy catching up with second doses of vaccine for cohorts 1-9 which is pretty much everyone over 50 and those with a long-term condition. We have now been told that the mass vaccination centres will be sole providers for those under 50. The previous surgery at Musgrove Park in Ashford will be the most local to us and people will be able to book on-line using the national booking system. I guess this enables us to focus fully on the day job and is probably beneficial as the team have been pretty full on vaccinating on top of the normal volume of work. To our dismay, though, it means we are not going to be vaccinating any of the healthy under 50s at the surgery. As a PCN we feel a bit sidelined by this so we are still talking to the centre at Musgrove Park and hope that if we badger the CCG enough they might give us some vaccines.

The volume of work has certainly been greater as we return to normal as people feel more comfortable presenting with problems that have been simmering along during lockdown. We are also finding that the hospitals are not back to full service yet so we are having to be a little more inventive with how we manage some conditions. Don't let this stop you from presenting if you have any health concerns and with a bit of enterprise we should get things sorted out.

Seema, our trainee GP, has passed her last set of exams which is great news and she can now relax a bit knowing that she will be qualifying fully in September. Thanks to all those who agreed to have consultations recorded which were really important as a learning tool and also for her exam. For 10 years she was a consultant in Obstetrics and Gynaecology so it has been a brave move to General Practice it must have been tough to be an adult learner again for the last 3 years.

Life really is getting back to normal and the better weather is helping. Sue in dispensary has her spiky hair back and I'm looking forward to being able to see through my fringe on Thursday. That children are playing sports again, hair cuts are being shown off and happy people are sitting outside the pubs and restaurants in the sunshine all just shows how vital the vaccine program has been. Sadly around the world people aren't so lucky and particularly the news from India is very shocking - please use this as a reminder to encourage younger people to keep with the program and get vaccinated.

On behalf of the Surgery Team, Jack Hickey - GP

Need a planning application?

Call **01233 861177**
vernacularhomes.com



LEADERS NEEDED FOR BEAVERS AND CUBS

Woodchurch Beavers and Cubs are in need of leaders for these sections. If you have some spare time, like inspiring children and are looking for a challenge, please contact Julian West on 07887 748692 or julian.west@tiscali.co.uk



Try our professional Home News Delivery service

New customer introductory offers available

Have your paper delivered before you go to work and read it with your breakfast!

- ✓ Early delivery - before 6.30am (7.30am at weekends)
- ✓ Excellent communication - phone or email ALWAYS responded to
- ✓ Different billing options available
- ✓ All national and local newspapers available to order
- ✓ All magazines available to order
- ✓ Well established reliable company with over 4,400 customers

Place your order today by telephone on 01580 763183

or email us at mail@jackiesnews.co.uk
or go to www.jackiesnews.co.uk/place-your-order

In "normal" times May is traditionally the WI's "Resolutions" month and this year, had we been able to meet on Tuesday, 11th May at 7.15 pm in the Memorial Hall, the chosen resolution for consideration and discussion would have been "A call to increase awareness of the subtle signs of Ovarian Cancer". In our April edition of the "WI Life" magazine we are told that Ovarian Cancer is one of the most common types of cancer, which mainly affects those who have been through the menopause. According to Cancer Research UK, in 2017 there were around 7,400 new Ovarian cancer cases in the UK each year resulting in 4,100 deaths. It is, therefore, hoped that by increasing awareness of symptoms, which include feeling constantly bloated, a swollen tummy, discomfort in the stomach and pelvic area, feeling full very quickly whilst eating and/or loss of appetite and needing to pee more frequently, might ensure earlier detection and treatment of this disease for, as with so many cancers, the earlier a diagnosis is made, the better the prognosis will be. A visit to your GP, even in these uncertain times, is, therefore, vital for anyone experiencing any of these symptoms to ensure that treatment can commence as soon as possible.

Following such a serious topic for debate, it would have been good to have been able to lighten the mood with an "American Supper" but even with the recent relaxations in the lockdown rules, unfortunately meeting in person will still not be possible! However, if all continues to go well with the vaccination programme and Covid cases continue to decline, we hope to be in a position to be able to meet again soon. In the meantime if any members have any urgent thoughts they wish to share regarding this important resolution, please feel free to contact a committee member, either by telephone or by e-mail. The deadline for WIs to cast a vote is 9th July, 2021, so any comments should be registered before then.

Whilst dealing with administration, this would seem like a good opportunity to remind members that subs are now due. £22.40 is the minimum payment required to rejoin until April 2022 and as our Treasurer is obliged to make a remittance for the National and East Kent Federation share by mid May, it would be really appreciated if your payment, either by cheque or by BACS, could be issued as soon as possible.

Hearty congratulations to Josie on winning the April Zoom Quiz - one of the questions in the "Detectives in Literature & on TV" round was "Robbie Lewis assisted which detective?", the answer of course being, Endeavour Morse played by John Thaw. The quiz is open to all members with access to Zoom, so if you feel could cope with this level of question, let Josie know, so that she can include you on Tuesday, 11th May at 7.30 pm We are also planning to re-start our popular Garden Parties for six very shortly if the weather could just warm up a bit and if the wind could feel a little less biting!

And finally, Ruth and Sheila were our lucky raffle winners and the two photos show each lady receiving their prizes



[Rental Properties In Woodchurch](#)

If you have a property/room to rent in or around the village, why not advertise it in our "Where to stay in Woodchurch" section. The price per advert is £4 per month (£44 per year). For more information contact The HUB



CGM Builders Ltd

07944 940 182

EST. Over 35yrs

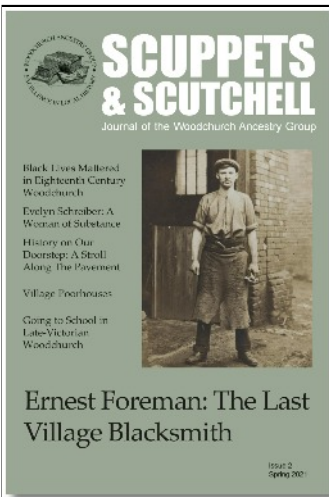
**Extensions
General Building
Property Maintenance
Brickwork/Stonework Specialist
Landscaping**

Free Estimates

Chris@cgmbuildersltd.co.uk

www.cgmbuildersltd.co.uk





The second issue of **Scuppets & Scutchell** - the new local history journal researched, written and produced by members of the Woodchurch Ancestry Group - will be published this month. Each issue has 80+ full-colour pages packed with interesting and well-researched articles about the village. The latest includes articles on the 18th-century

miller Edward Twopenny, going to school in late-Victorian Woodchurch, the life and times of wealthy Hengherst heiress Evelyn Schreiber, Widow Bangham and welfare in the 18th century, a history of The Pavement, bastardy orders and the turbulent life of Philadelphia Barman, the last blacksmith in Woodchurch, the village poorhouses and much more.



Scuppets & Scutchell is for anyone interested in the history of Woodchurch or keen to discover more about the village's fascinating past. You can buy Scuppets & Scutchell online at the Woodchurch Ancestry Group bookshop (www.woodchurchancestry.org.uk/bookshop/scuppets.html). Copies will also be available from **WAG members** Josie Mackie and Jon Chaplin and at the **Woodchurch Hub** and the **Woodchurch Village Life Museum** when the current lockdown restrictions are relaxed.

WOODCHURCH MORRIS MEN

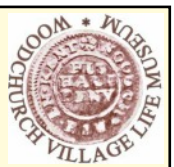
Although we have no immediate events booked, we are hoping to return to "normal" sometime in July.
Bill (Interim Squire)

Photocopying and Laminating at The HUB

We can now scan, print, copy and laminate A3 pages and can print booklets.

Photocopies (per side) A4 b/w - 10p, A4 colour - 15p
A3 b/w - 15p, A4 colour - 20p
Laminating (per sheet) A4 - 15p, A3 - 25p

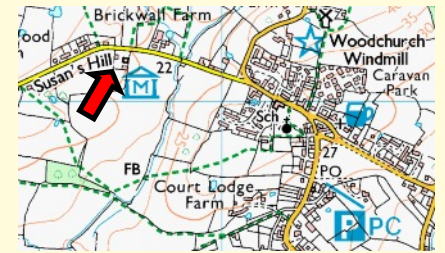
WOODCHURCH VILLAGE LIFE MUSEUM



Woodchurch Village Life Museum will be reopening at weekends and bank holidays from the 22nd May. Our Museum is one of the villages best kept secrets and it is a lovely place to visit and to bring guests. We are 5 minutes walk from the village pubs, along Susans Hill and entrance to the Museum is free.



In addition to our permanent exhibits of Woodchurch through the ages, this year we have added a temporary exhibition called "Inspired By Woodchurch". This includes information and items from village residents and artists, both present and past, who have been inspired by our beautiful village.



Museum 150+ April Lottery Draw

Support your local museum- you could win a £50/£30/£20 prize every month. An annual ticket costs £12 in September. Now selling for £4 for 4 months. For more information please contact Joyce Nash via The HUB - enquiries@woodchurchhub.uk or 01233 861381

1st prize	£50	Margaret Smith	740
2nd prize	£30	Susan Mansfield	864
3rd prize	£20	Elizabeth Little	265

ARE YOUR EVENTS IN THE COMMUNITY CALENDAR?

Have you put your event dates in the Community Calendar? Although we are still early in the year we are already seeing clubs and society event clashes. Email your event dates to enquiries@woodchurchhub.uk to make sure they are included in the calendar.

Advertising in the Parish Newsletter

If you would like to advertise your business or rental property in future editions of the Newsletter please go to www.woodchurchhub.uk/the-hub/newsletters/parish-newsletter-advertising/ or contact enquiries@woodchurchhub.uk for more information.

Jean Mealham Pop-In Centre

The Jean Mealham Pop-In Centre for the over 60's is now open for tea and coffee every Wednesday afternoon from 2:15 to 4:30. Until lockdown ends this will be held outside in good weather and under cover if it is raining. Until restrictions are lifted please bring your own cup/mug.



The marquee will also be open each Wednesday afternoon to receive any items for the "Boot Fair". Also for anyone wishing to view, and hopefully purchase, any items.

The Pop-In centre now has a table tennis table that can be booked at other times. The cost is £5 per hour and can be booked through Richard Carley on 07798 566849.



Following the success of the outdoor "proms" concerts last summer, they will be returning to the Pop-In over the last weekend (28th and 29th) of August. More details to come in the next Newsletter.

Margaret Morris Movement over 50's exercise classes are hoping to resume in September in the Community Hall.

The Six Bells pub opens for business

After being closed for many months, the Six Bells pub once again opened its doors for business on the 12th of April. Although the day was sunny the wind was bitterly cold, however this did not stop the hardy folks of Woodchurch from turning out to enjoy a sociable drink and some good food in the pub garden. The village pubs have always been centres for the community within Woodchurch and it is good to see them starting to re-open and being supported by locals.



PILATES with Alex Ford

I am pleased to say that Pilates classes are re starting on Monday 17th May in Woodchurch village hall.

Class times:

Monday 9am - 10am

Tuesday 9am - 10am

Tuesday 10.15am -11.15am

Tuesday 6pm - 7pm

Wednesday 9am - 10am

Classes are open to everyone but are not run on a drop in basis so please contact me if you are interested.

What is Pilates?

Pilates is a hugely effective form of exercise that strengthens the body from the inside out. It can help to:-

- Improve your posture
- Tone muscles
- Reduce back, neck and shoulder pain
- Relieve unwanted stress and tension
- Strengthen and mobilise joints

I am a level 3 qualified Pilates mat work teacher and Back for Good practitioner, as well as a level 3 personal trainer.

I have been in the fitness industry for over 30 years and a Pilates teacher for the last 8 years.

I love helping people to improve their fitness, gain a better understanding of body awareness and generally move with greater ease.

If Pilates is of interest to you please contact me on 077579708, 01233 861456 or alexford.pilates@gmail.com

Alex Ford

Items For Future Newsletters

The purpose of the Woodchurch Parish Newsletter is to inform the residents of Woodchurch what is going on in our village. We are keen to share as much of what is happening as we can. If there is something that you would like to have included in future editions then please send them to:

enquiries@woodchurchhub.uk

- * forthcoming events
- * club/society reports
- * announcements
- * interesting facts
- * memorials
- * photos
- * adverts
- * etc. etc. etc.