

OVER 800 COPIES distributed every month in the Woodchurch area

What's on in Woodchurch in January

Please note that some published events may be affected or cancelled as a result of government restrictions

Weekly events:

Wednesdays:

Fish and Chips 4:30pm - 7:00pm in the Village Car Park

Thursdays:

Pizza Van 4:30pm - 7:00pm in the Village Car Park

Saturdays:

Boot Camp 9:00pm - 10:00am on the Village Green

Sundays:

Holy Communion 11:00am in All Saints Church
* except for January 31st

Other Events:

- Sat 9th All day - **Woodchurch in Bloom** at the Memorial Hall - Launch of HOPE the permanent village butterfly
- Fri 15th All day - **Woodchurch in Bloom** - National Hat Day around the village
- Thu 28th 7:00pm - 9:00pm **Woodchurch Parish Council meeting** (via Zoom)
- Sun 31st 11:00am - **Holy Communion** - pre-recorded service to be viewed online.

Items For Future Newsletters

The purpose of the Woodchurch Parish Newsletter is to inform the residents of Woodchurch what is going on in our village and we are keen to share as much of what is happening as we can. If there is something that you would like to have include in future editions then please send them to enquiries@woodchurchhub.uk

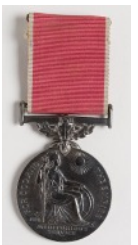
- * forthcoming events
- * announcements
- * memorials
- * adverts
- * club/society reports
- * interesting facts
- * photos
- * etc. etc. etc.

Richard Carley to be awarded the British Empire Medal in the 2021 New Years honours list

Congratulations to Richard Carley who will be receiving the British Empire Medal in the Queens 2021 New Years honours list for his services to the elderly in Woodchurch. Over the years Richard has tirelessly provided support for all of our village residents - especially supporting the village elderly population through the Jean Mealham Pop-In Centre.



Richard normally shies away from publicity and he does not know who nominated him. He would like give his sincerest thanks to them - whoever and wherever they are.



Richard said that he is very pleased to be receiving the award however he stressed that he could not have achieved what he has without a lot of support from others, both from within the village and beyond.



Due to the current pandemic restrictions the precise date of the award ceremony has not yet been fixed, but it is hoped to be early in 2021.

The HUB will remain open "virtually" during January. The HUB building will remain physically closed until government guidelines allow us to fully reopen. If you are in need of support during the lockdown, or need access to facilities offered by The HUB (e.g. printing, photocopying or laminating) then please phone 01233 861381 or email enquiries@woodchurchhub.uk.

Any items for the newsletter- please contact the Woodchurch Hub
Tel: 01233 861381 Email: enquiries@woodchurchhub.uk

Woodchurch Surgery - January Update

Hurry up and wait...

Last weekend was a massive moment for all of us at Woodchurch Surgery. With the other member surgeries of the Primary Care Network (PCN) we vaccinated 975 people with not a single wasted vaccine. It was a huge effort and depended on lots of staff and the closure of Charing to any other work. Manageable at a weekend and we are preparing for a repeat event in 3 weeks to deliver the second dose.

It really was a triumph but also exhausting and we were all kept going by the really positive vibe and comments from all the patients there. Something of a party atmosphere - but it's not over yet and just shows what a mammoth task this will be.

Now we have to wait. We are trying to negotiate some smaller deliveries so we can run more regular and more manageable clinics which can then become the norm over the next year. Clearly with the new variant and the rising numbers locally (and across the South East) the reality of Covid is more palpable and a lot of people are asking when they will get vaccinated. Everyone is completely deserving and the seeming randomness of selection will be hard to bear but we are running regular searches and doing our best to get on with the task in hand.

Please don't phone to check - so we can keep our lines open we will try our very best to keep everyone updated with newsletters. It is important that we can contact people easily so we can invite you at short notice so please ensure we have a mobile phone number - email it to us or pop a note through the door. This way we can ensure minimal wastage and keep the program running. If you do have queries about the vaccine then emailing the team at kmccg.woodchurchsurgery@nhs.net is probably the most efficient way for us to help you.

For any of you that do get the virus in the meantime then we are doing remote monitoring for the high risk groups when we are notified of a positive swab. Anyone can access help for assessment so please call the surgery in the daytime and 111 at the weekends. If you feel that you or a relative/loved one is slipping through the net please contact us - the first thing to do in any medical emergency is "get help" so please reach out for help if you are concerned.

We'll be signing off for Christmas on the 24th and will re-open on Tuesday 29th December. In the meantime I hope everyone makes the most of a very strange Christmas period and stays fit and healthy mentally and physically.

Best wishes from Jack Hickey and the team at Woodchurch Surgery

Woodchurch Community Calendar

As we move into a brighter new year, we are anticipating that village events will begin to return to a normality. As restrictions ease and your club/society becomes more active, please let us know so that you will be included in the Community Calendar. The Community Calendar directly feeds into the Newsletter calendar and so it is important that you help us to keep it up to date. Please send event details, and updates, to enquiries@woodchurchhub.uk. The full Community Calendar can be found at www.woodchurchhub.uk/community-calendar - where you can also add your own event suggestions.



[Bin collection days for Woodchurch have recently been added to the community calendar.](#)

Museum 150+ December Lottery Draw

Support your local museum- you could win a £50/£30/£20 prize every month.



An annual ticket costs £12 in September. Now selling for £10 for 10 months. For more information please contact Joyce Nash via The HUB - enquiries@woodchurchhub.uk or 01233 861381

1st prize	£50	Richard George	821
2nd prize	£30	Woodchurch Morris Men	1019
3rd prize	£20	Ann Marie Allen	487


**Hamstreet
Dental Clinic**
Welcomes You




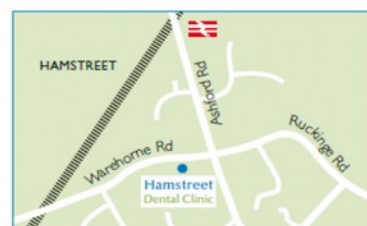
Surgery Opening Hours

Monday	8.30am to 5.00pm	Thursday	8.30am to 5.00pm
Tuesday	9.00am to 6.00pm	Friday	8.30am to 5.00pm
Wednesday	9.00am to 5.00pm	Saturday and Sunday	closed

Where to find us...

Hamstreet Dental Clinic
Warehorne Road
Hamstreet
Kent TN26 2JJ

 Find us on facebook



[Hub TV/Monitor Appeal](#) - The HUB would like to thank everyone who offered to donate a TV/Monitor for use in The HUB. We have now received the monitors we need.

Tel: 01233 733848
Email: hamstreetdentalclinic@gmail.com

All Saints Church

Dear Friends,

My husband Mike and I would like to wish everyone in Woodchurch a Happy and Healthy New Year. I would like to thank everyone who was involved in setting up the lights and nativity scene in the churchyard, and helping us to clean and prepare the church for Christmas.

I hope that your Christmas celebrations were still possible this year, even if more subdued than usual. As Christians, we believe that Christ brings light into our dark times, and it is important that we offer that light to one another at this time.



I am sure many of us found that our plans for Christmas were changed as a result of the news that we are now in Tier 4, and experiencing another lock-down. We have been allowed to keep our churches open for public worship this time, and we will be continuing to have an 11am Holy Communion service each Sunday, with the exception of Sunday 31st January, when our service will be pre-recorded. We have a Facebook page and a YouTube channel if you have access to technology. Please only come to church if you feel safe in doing so; this is very much a personal decision at this time. In church we will continue to keep safe as we can by the use of hand sanitiser, face masks and social distancing. Please ring me if you are experiencing difficulties of any kind at this time - I am always happy to chat on 01233 820266.

As we start to plan this new year, 2021, let's think about what is ahead of us. What are you looking forward to most when restrictions are lifted? I think for me being able to welcome friends and family into our home would be lovely, also to have chance to become more involved in social events around the villages, as this has not been possible since we moved in.

New Year Blessings to all,

Reverends Sue and Mike Rose

Local History Society - Due to current restrictions there is no event planned for the month of January. We normally have our AGM in February but it is also unlikely that it will happen. We will keep you updated.

Photocopying and Laminating at The HUB

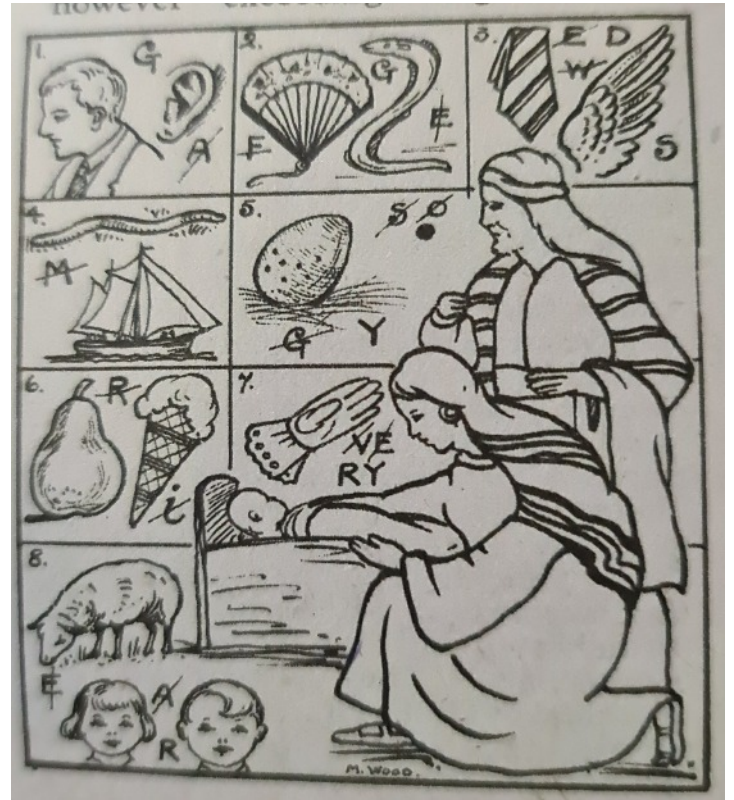
We can now scan, print, copy and laminate A3 pages and can print booklets.

Photocopies (per side)	A4 b/w - 10p, A4 colour - 15p
	A3 b/w - 15p, A4 colour - 20p
Laminating (per sheet)	A4 - 15p, A3 - 25p

Puzzle Pictures from the Woodchurch Parish Magazine - January 1951

Below is a picture puzzle that was published in the Woodchurch Parish Magazine from 1951. Before the Christmas Cheer completely gives way to thoughts of what will be happening in 2021, can you solve each of the puzzles.

The answers can be found at the bottom of the back page.



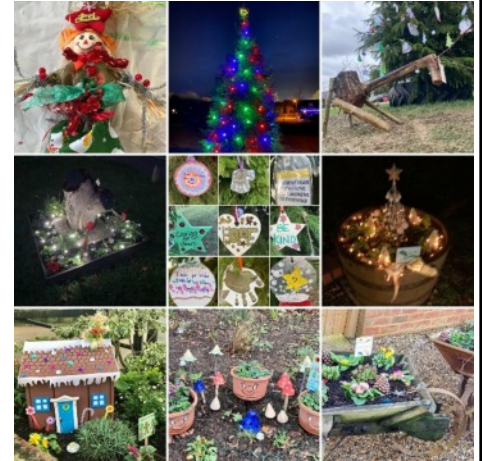
This puzzle is reproduced with permission from Woodchurch Village Life Museum

Did you know that Woodchurch Museum hold all editions of the Parish Magazine going back to the late 1800s. These are available to view by appointment .

Need a 
planning
application?
Call 01233 861177
vernacularhomes.com

All Saints Church Foodbank Appeal Please continue to support All Saints, Woodchurch with donations of produce for the local community; their foodbank operates from the church porch at All Saints.

- Our Winter Wonderland Walk around all the village planters continues into the New Year and hopefully soon you will be able to enjoy the many bulbs coming up in them. We also have a fun event planned on **15th January** to coincide with **National Hat Day** - so why not find your best/favourite hat and wear it on your walks around the village that day!
- HOPE, our permanent pebble butterfly we are hoping to build in the new year having had to postpone 2 attempts in December due to weather
- A little further into the future, we are also planning some 'February Magic Moments' led by our 'Winrafters' as well as a 'March Spring Safari' and we will share further details of these in the February newsletter.



To find out more or get involved, in any of our activities, please do get in Touch:

Linda Baker - THRIVE Well-being Lead: 07795 383945

Philippa Jones - Chair: 07774 608281

WoodchurchinBloom@hotmail.com

[A very Happy new year from The Big Thin Red Line](#)

A strange end for us all in 2020 and that is why we are still keen to recruit more people into our group. This year we want to create every opportunity for the community to get together and to enjoy events that we run. We also want to continue our support for other groups in the village.



We will be holding a meeting on the 21st January if we cannot do it in public around tables we will hold it on social media, so please contact myself with email addresses so I can set you up on the call - if it is needed.

We are looking at forming a new committee and, as we noted in December, we would also like a youth committee so we can engage with more and ensure that the younger community get a voice.

We hope to bring the "Picnic On The Green" back again this year after the pandemic dust has begun to settle. This will hopefully be our first event in 2021 but it will be dependent on how much we are allowed to do safely as the year unfolds.

You can find us on facebook or contact me personally on patrick7171@hotmail.co.uk or 07584075008.

Simple Kent Funerals

Relaxed, flexible, imaginative, economical, caring

Applefield Cottage, Redbrook Street, Woodchurch TN26 3QS

Call Toby on 07806 613297 • www.simplekentfunerals.co.uk

Gabriels Goodies and The Jean Mealham (Pop-in) Centre help to provide Christmas Dinners

Over the Christmas period many Woodchurch residents gave donations to help provide a Christmas dinner for the village elderly, who were either alone or were unable to provide one for themselves. A big thank you to Angela and Jemima for making it all happen.

Gabriels Goodies

We would like to express our gratitude to everyone's generosity in pledging Christmas Lunches for those whom are alone and in need during this festive season. We especially want to thank Nikki R who initiated this incentive. Pledges have come from all over East Sussex, Kent and London, which has provided meals not only in our village but outside of Woodchurch too.

Richard Carley has been a great support in nominating and delivering these meals to those whom have benefited from the lunches. It has been such a success that a New Years Eve festive meal will also be provided to the recipients.



Gabriel's Goodies is a family-run home bakery which began during the first lockdown; we endeavour to



ensure everyone has access to a home cooked meal and baked goodies. We want our customers to know they are considered and are comforted with a belly hug.

If you know anyone you'd like to send a food parcel to,

or you'd like a hot evening meal then do get in contact. We deliver safely to your doorstep for free. Call 07864975539 to make your order today.



Many thanks

Angela Gabriel and Jemima Norton

You can find more information about Gabriels Goodies on their Facebook page

<https://www.facebook.com/gabrielsgoodieskent/>

Jean Mealham (Pop-in) Centre



Whilst helping to deliver the hot meals on Christmas Day, on the run up to Christmas, Shirley and Clive Looker and Richard Carley were also busy preparing and distributing over 50 Christmas hamper boxes to the village elderly.



**Try our professional
Home News
Delivery service**

**New customer introductory
offers available**

Have your paper delivered before you go to work and read it with your breakfast!

- ✓ Early delivery - before 6.30am (7.30am at weekends)
- ✓ Excellent communication - phone or email ALWAYS responded to
- ✓ Different billing options available
- ✓ All national and local newspapers available to order
- ✓ All magazines available to order
- ✓ Well established reliable company with over 4,400 customers

**Place your order today by telephone on
01580 763183**

or email us at mail@jackiesnews.co.uk
or go to www.jackiesnews.co.uk/place-your-order

Parish Council Update

Firstly, thanks again to everyone who supported our campaign to raise money for the new lights for the Christmas tree. We raised over £600 through the generosity of the community and this was an absolutely fantastic result! We are thrilled at the support that you have all shown this campaign and it means we have been able to invest in a set that will be robust enough to light the village tree for years to come.

And what a tree! Thanks again for the hard work and dedication that the Woodchurch In Bloom team have shown to making the village look and feel so festive over the Christmas period. We really appreciate the contribution that they have made to the community in a time when it has been more of a challenge for us to all celebrate the season together. The children from Woodchurch Primary School have also been very busy, creating beautiful decorations which they then hung on the tree. The rest of the village have enjoyed admiring these ornaments, so thank you to the team at the school for organising this. An additional thank you to the anonymous donor of the charming reindeer that have been keeping the tree company- a lovely addition to the festive display!

Looking ahead to the coming year, if any of the other societies in the village or any individuals within the village have any ideas they may wish to implement that will benefit the community then please do get in touch- the Parish Council is keen to hear about them and see if we can support them going forward.

The Parish Council are also working on a proposal to extend the litter picking contract within the village, to ensure the upkeep of the area and ensure areas that haven't been covered before are included. We will let you know when this is approved.

Additionally, we are aware that there has been a spate of fly-tipping in the local area, and we wanted to ensure that villagers can keep up the great work they have been doing in reporting it by ensuring that everyone is aware how this can be done effectively:

- You can report fly-tipping online at www.ashford.gov.uk/environmental-concerns/report-a-street-issue/fly-tipping or telephone 01233 331111 (8.30am - 4.00pm Monday - Friday).
- Alternatively you can go to www.ashford.gov.uk/report and download the **Your Ashford** app for smartphones- this allows reporting of various environment issues including fly-tipping.

Another issue that the Parish Council plans to investigate is the problem with speeding in the village. This issue has been witnessed by and reported to various members of the council and in the new year this will be something we plan to address. It is essential that if you witness speeding or

dangerous driving in the village then you report this to enable us to evidence that speeding is a problem and will improve the chances that action can be taken to implement more traffic calming measures. You can report speeding to our Community Warden on 07813 711940 or katherine.carter@kent.gov.uk. Due to a recent injury calls and emails to Kathy are being automatically delivered to Peter Beasley. Please also let the Parish Council know through one of the contact methods below.

Another thing that the Parish Council wish to highlight to the community is how to make any problems known regarding any disruption through the Brexit implementation plans in Kent. Due to the changes which are happening in January when Brexit is finalised, Ashford Borough Council have created a website to ensure that any issues or concerns can be reported easily.

www.ashford.gov.uk/brexit will act as a central point for any community issues and concerns to be reported, such as traffic congestion, illegal lorry parking or littering.

Finally, we are also aware that there are still problems with a minority of residents parking on pavements and in an inconsiderate manner. This is something we will be discussing in our next meeting and we would ask again for residents to keep reporting issues so that we can build up a clearer picture of what is happening so we are better able to take action.

There are several ways you can contact your Parish Council

- In person: [By talking to one of your councillors - details on the Parish Council Web site](#)
- By email: clerk@woodchurch-pc.gov.uk
- By phone: [01233 733994](tel:01233733994)
- Through The HUB: [Place your correspondence in a sealed envelope marked "Parish Council" and deliver to The HUB](#)
- By post to: [Woodchurch Parish Clerk](#)
[Keg Barn, Hornash Lane, Shadoxhurst, Ashford, Kent, TN26 1HX](#)
- Through the contact form on the Parish Council Web site: www.woodchurchhub.uk/parish-council/



Woodchurch Word Search

X D C T N E M E V A P E H T B O M F J I Q G J
W T O W N L A N D S T O R E S G X F E P A H F
B H P C S R E H C T U B Y E L R A C L H I C Y
Z A C J T W Y S U R G E R Y L O Z N T C W R I
K H L L L L A H L A I R O M E M T T R A U W
A F I I W O O D C H U R C H I J F F A O R H C
O M U E S U M E F I L E G A L L I V R O M C O
S D N M O O L B N I W C S Y H U Q Y B M E S L
R A B K S K R A R E B R E E D S H U B Y M T D
E O P P M U P N B O N N Y C R A V A T E O N B
T R O L N O I L I V A P G M G R E E N L R I L
N T P S E G A R A G I L W L B B H O K R I A O
A N I S F T S I X B E L L S Q V A P S I A S W
R O N S K F L G S E L L I M D N I W M H L L H
Z R J Z R N P O H S L E D O M J B R S S T L O
Q F Y Q U O D K A O K R I H S T L O L T S A L

Find the following words in the puzzle.

Words are hidden ↑ ↓ → ← and ↘ .

ALLSAINTSCHURCH
BONNYCRAVAT
BRATTLE
CARLEYBUTCHERS
COLDBLOW
FRONTROAD
GARAGES
GREEN

HUB
MEMORIALHALL
MODELSHOP
PAVILION
POPIN
PUMP
RANTERSOAK
RAREBREEDS

SHIRKOAK
SHIRLEYMOOR
SIXBELLS
SURGERY
THEPAVEMENT
TOWNLANDSTORES
VILLAGELIFEMUSEUM
WARMEMORIAL

WINBLOOM
WINDMILL
WOODCHURCH

Do you remember Wings&Things?

Wings&Things was the Woodchurch Village air show that was hosted by Rob Davies at his private air strip and was organised by Woodchurch Museum. It ran for many years and was named by Airshows Magazine as the best private air show in the UK. It also included an impressive display of vintage vehicles and steam powered transport.

The Museum has recently been sorting through its archives and has come across a rare DVD of Wings and Things that was made by "Life TV Media" (now part of Sky).

If you would like to own one of the last few

copies of this DVD please contact Joyce at jnash@nashweb.net or contact The HUB. The cost of the DVD is £10 and all proceeds will go to Woodchurch Museum.



Treasured required for The HUB

After seven years of being treasurer at The HUB, Nick Jones has decided that it is time for him to step down. Our sincere thanks go to him for all the excellent work he has done throughout that time. The HUB accounts have recently been audited and are in very good order.



Do you know of anyone who could fill this vital volunteer role and help support the village?

For more details please contact the HUB on enquiries@woodchurchhub.uk or Wade on 07502 220653.

Our Village Green tree for 2021

A big thank you to Sarah and Richard George who have kindly donated the 9 meter tree that is currently in their front garden for the village green next Christmas.

This beautiful tree has been growing in their garden for many years but has now become too big and needs replacing.

In the run up to next Christmas we will be looking for help from someone with a large trailer to help transport it.



EST. Over 35yrs

Extensions
General Building
Property Maintenance
Brickwork/Stonework Specialist
Landscaping

Free Estimates

Chris@cgmbuildersltd.co.uk

www.cgmbuildersltd.co.uk



We are...

kendallrichardson



bookkeepers...



vehicle auctioneers...



livestock auctioneers...



estate & lettings agents...



surveyors and planners...



time lords!

Fabmin

Ashford

01233 506260

Tenterden

01580 766766

onTheMarket.com

rightmove

www.hobbsparker.co.uk

RICS

f t i

recycle
When you have finished with this bottle please recycle it

hobbs
parker

Hobbs Parker Estate Agents comply with the Money Laundering Regulations 2017 and in the event that we have any suspicion of money laundering on any property then we are required to make the appropriate disclosure report to HMRC.

Answers to Puzzle Pictures on page 3. 1-Manger, 2-Angel, 3-Tidings, 4-Worship, 5-Egypt, 6-Peace, 7-Glory, 8-Shepherds

Advertising in the Parish Newsletter

If you would like to advertise your business or rental property in future editions of the Newsletter please go to www.woodchurchhub.uk/the-hub/newsletters/parish-newsletter-advertising/ or contact enquiries@woodchurchhub.uk for more information.